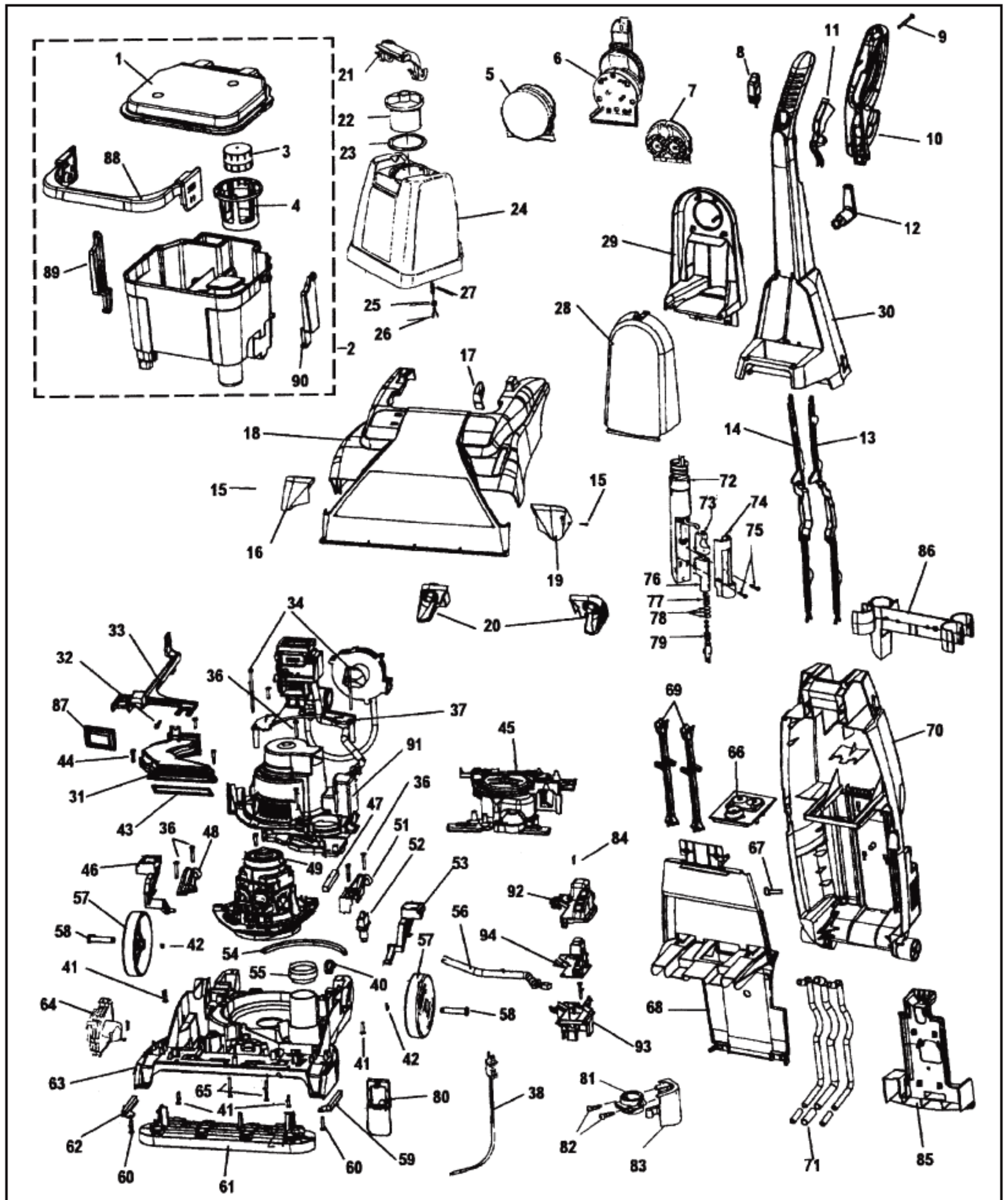


HOOVER Original

STEAMVAC – MAX EXTRACT LS

Models F6055-900, F6056-900



Original **HOOVER**

STEAMVAC – MAX EXTRACT LS

Models F6055-900, F6056-900

| KEY | PART NO | DESCRIPTION |
|-----|-------------|--|
| 1 | H-42272122 | Recovery Tank Lid (Does not inc. its 3,4) |
| 2 | H-38777056 | Recovery Tank Assem Comp (Inc. its 1,3,4, 88,89,90) |
| 3 | H-43538001 | Float |
| 4 | H-38719043 | Float Retainer |
| 5 | H-48437028 | Scrub Module Assembly (Incl. 1 scrub pad) |
| 6 | H-48439003 | Powered Hand Tool (Incl. It. 7) |
| 7 | H-48437027 | Upholstery Module Ass'y |
| 8 | H-38433077 | Solution Button - AG |
| 9 | H-21447255 | Screw Self Tapping |
| 10 | H-39458007 | Handle Lever Guard |
| 11 | H-38434029 | Control Lever - AG |
| 12 | H-39442044 | Cord Wrap - ABU |
| 13 | H-38458055 | Control Rod Upper - Back |
| 14 | H-38458056 | Control Rod Upper- Front |
| 15 | H-21479432 | Screw Self Tapping |
| 16 | H-39383104 | Lens Cover- R.H. |
| 17 | H-38421092 | Indicator Knob - AG |
| 18 | H-37271070 | Hood - AEC - F6055-900, |
| 18 | H-37271075 | Hood - AEX - F6056-900 |
| 19 | H-39383103 | Lens Cover - L.H. |
| 20 | H-47173035 | Lamp / Light Housing Ass'y |
| | H-27313106 | Lamp - (2 req'd) Not Shown |
| 21 | H-39457016 | Solution Tank Handle |
| 22 | H-42272002 | Solution Tank Cap (Inc. item 23) |
| 23 | H-38784062 | Gasket |
| 24 | H-42272105 | Soluton Tank Ass'y Without Handle (Inc. items 22, 23, 25, 26, 27) |
| 25 | H-38784061 | Valve Seal |
| 26 | H-38717009 | Valve Stem |
| 27 | H-38312014 | Spring |
| 28 | H-37276012 | Tool Door - ACW |
| 29 | H-36433141 | Tool Holder |
| 30 | H-39466039 | Upper Handle Ass'y (Inc. its 8 thru 14) |
| 31 | H-43484003 | Duct Ass'y (Includes Item 87) |
| 32 | H-23149002 | Screw Self Tapping |
| 33 | H- 38458024 | Turbine Actuator Arm |
| 34 | H- 21447246 | Screw Self Tapping |
| 35 | H-21447242 | Screw Self Tapping |
| 36 | H-21447020 | Screw Self Tapping |
| 37 | H-43582010 | Hose Conversion Ass'y w/Pump (includes item 64) |
| 38 | H-46583056 | Attachment Cord |
| 39 | H-21447232 | Screw Self Tapping |
| 40 | H-36172016 | Cord Retainer |
| 41 | H-21447217 | Screw Self Tapping |
| 42 | H-160017 | Retaining Ring |
| 43 | H-38783025 | Duct Seal |
| 44 | H-21447072 | Screw Self Tapping |
| 45 | H-43191004 | Turbine & Gear Ass'y |
| 46 | H-38458059 | Handle Release Pedal |
| 47 | H-34122024 | Motor Cover Seal |
| 48 | H-36131106 | Trunnion Cover RH -AG |
| 49 | H-43576197 | Motor Assembly - 12 Amp |
| 50 | H-21447020 | Screw Self Tapping |
| 51 | H-36131107 | Trunnion Cover L.H.-AG |
| 52 | H-28218048 | Switch |
| 53 | H-38458060 | Switch Actuator Pedal |
| 54 | H-38781048 | Motor Base Seal |
| 55 | H-38784063 | Standpipe Seal |
| 56 | H-46526017 | Lead/Tube Ass'y - Power Supply |
| 57 | H-38522076 | Rear Wheel - ADB |

| KEY | PART NO | DESCRIPTION |
|-----------------------|-------------|---|
| 58 | H-32434007 | Rear Axle |
| 59 | H-48445011 | Brush Back Ass'y - L.H. |
| 60 | H-21447257 | Screw Self Tapping |
| 61 | H-48437026 | Brush Block Ass'y |
| 62 | H-48445007 | Brush Back Ass'y R.H. |
| 63 | H-42274004 | Main Body Ass'y |
| 64 | H-43582005 | Pump Ass'y Complete |
| 65 | H-21479438 | Screw Self Tapping |
| 66 | H-43526016 | Reservoir Ass'y |
| 67 | H-21447244 | Screw - Special |
| 68 | H-37276003 | Handle Cover |
| 69 | H-38458033 | Control Rod - Lower |
| 70 | H-39466044 | Lower Handle |
| 71 | H-40309029 | Service Tubing Pack |
| 72 | H-43436023 | Hose Ass'y Comp. |
| 73 | H-38433074 | Trigger - AG |
| 74 | H-37276006 | Wand Cover |
| 75 | H-21447239t | Screw Self Tapping |
| 76 | H-43513011 | Wand / Valve Ass'y |
| 77 | H-38312019 | Spring |
| 78 | N/A | O - Ring |
| 79 | H-43412007 | Nozzle / Valve Ass'y |
| 80 | H-43613018 | Filter Cassette & Screen Ass'y |
| 81 | H-36131097 | Hose Cover |
| 82 | H-21447228 | Screw - Self Tapping |
| 83 | H-36171032 | Hose Clamp |
| 84 | H-21447223 | Screw-Self Tapping |
| 85 | H-36433107 | Tool Rack (Lower) |
| 86 | H-36433128 | Hose / Nozzle Holder (Upper) |
| 87 | H-38783024 | Valve Duct Seal (Located on back of item 31) |
| 88 | H-39457017 | Recovery Tank Handle |
| 89 | H-36153059 | Latch Arm - RH |
| 90 | H-36153060 | Latch Arm - LH |
| 91 | H-37196157 | Motor Cover |
| 92 | H-37278010 | PCB Cover |
| 93 | H-37278011 | PCB Bracket |
| 94 | H-46851033 | PCB Ass'y |
| Items Not Illustrated | | |
| | H-34113004 | Motor Seal |
| | H-21447041 | Screw - Tool Rack |
| | H-38717013 | Check Valve (Sol. Tank Cap) |
| | H-40201171 | Handle Hardware |
| | H-36132003 | Over Center Spring |
| | H-36439001 | Valve Crank Arm |
| | H-38783023 | Valve Tank Seal (Located on top of valve) |
| | H-56518138 | Owners Manual |
| Tools / Chemicals | | |
| | H-38617028 | Crevice Tool |
| | H-39514001 | Nozzle Clean Out Tool |
| | H-40308001 | Scrub Pad Poly Pack (Inc. 2 scrub pads and 1 triangular Velcro pad) |
| | H-38613040 | Nozzle Body |
| | H-48417004 | Bare Floor Cleaning Tool - |
| | H-57333016 | Carpet Solution - 16 oz |
| | H-40303032 | Bare Floor Solution - 32 oz. - |
| | H-40302032 | Pre Spray Cleaner - 32 oz. - |
| | H-40301064 | Carpet Solution - 64 oz |
| | H-40302016 | Pre Spray Cleaner w/Sprayer - 16 oz. |
| | H-43412003 | Sprayer Only - Pre Spray Cleaner |