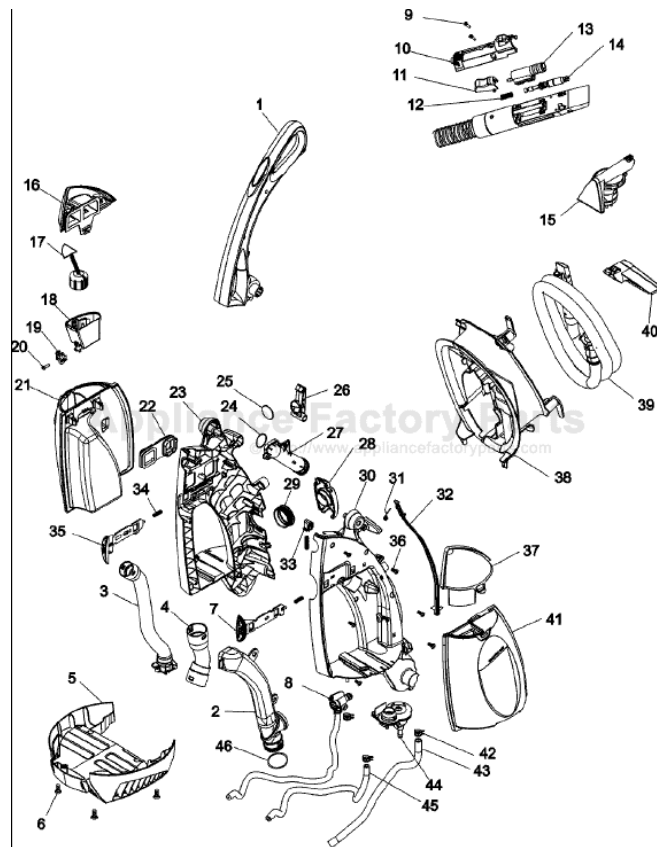


This Owner's Manual is provided and hosted by Appliance Factory Parts.



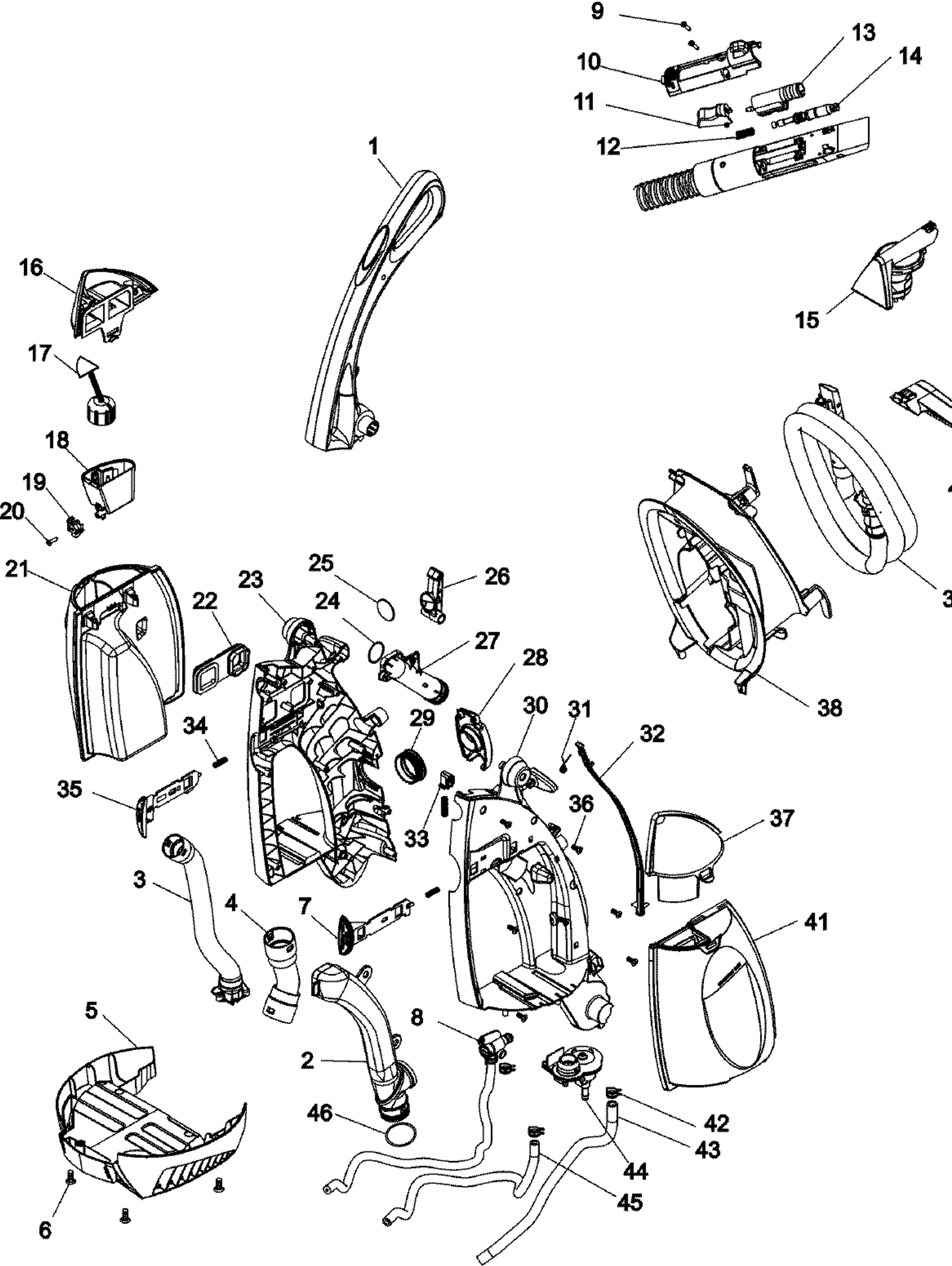
HOOVER F6213-900 Owner's Manual

[Shop genuine replacement parts for HOOVER
F6213-900](#)



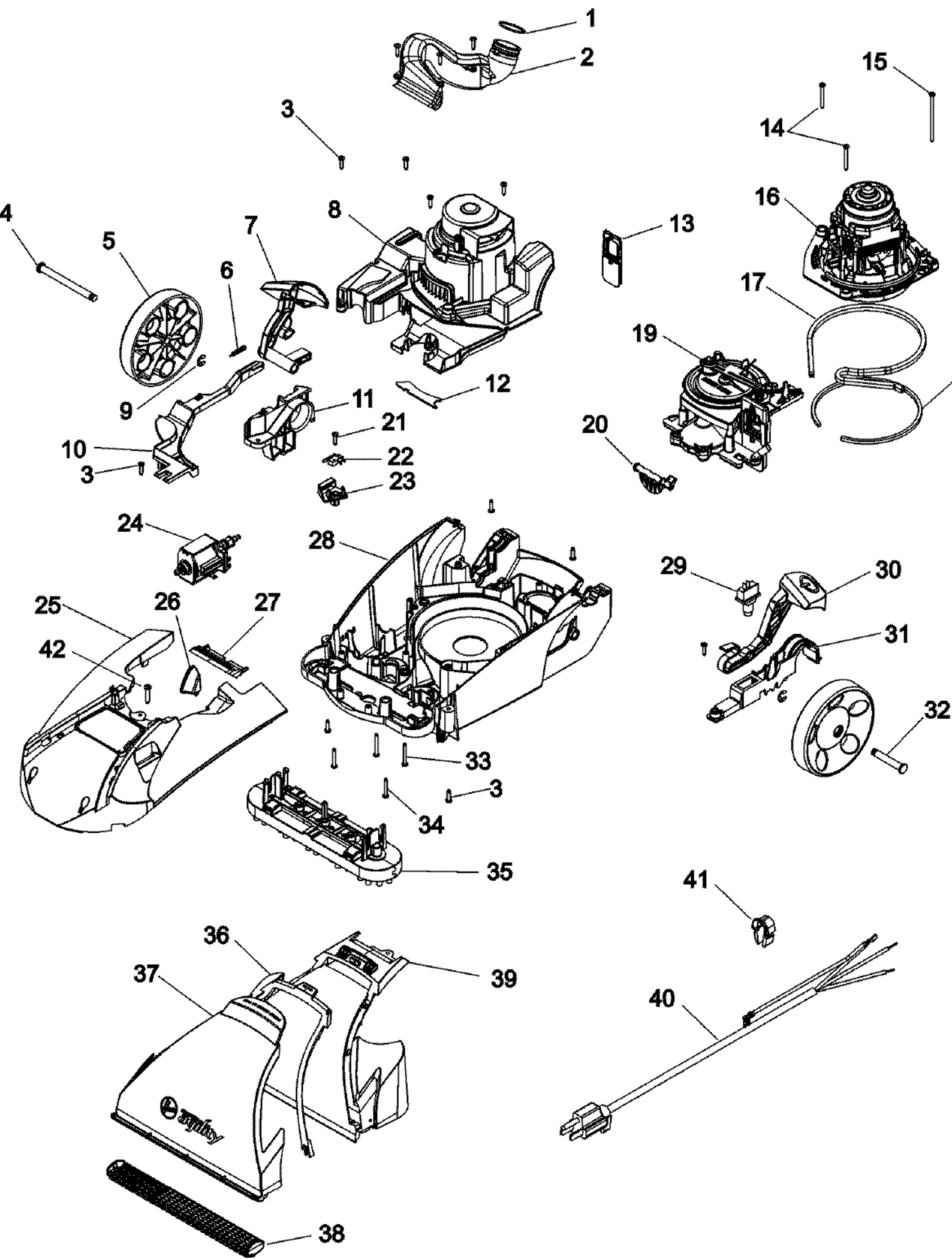
[Find Your HOOVER Vacuum Cleaner Parts - Select From 1455 Models](#)

----- Manual continues below -----



1	90001045	UPPER HANDLE ASSEM	
2	90001204	SOLUTION DUCT	
3	90001079	AIR HOSE COMPLETE	
4	90001080	HOSE COMP RECOVERY	
5	90001069	LOWER HANDLE COVER	
6	21447003	SCREW	
7	90001054	SOLUTION TANK RELEASE LATCH	
8	90001095	QUICK DISCONNECT ASSEM	
9	21447239	SCREW	
10	92001002	WAND COVER-MV	
11	38433074	TRIGGER-SV III'S	
12	38312019	SPRING	
13	91001060	WAND VALVE ASSEMBLY	
14	43412007	NOZZLE/VALVE ASSEMBL	INCLUDES O-RINGS
15	38613038	NOZZLE BODY-TURBINE	
15	48434006	BRUSH ASM-SV TUR BR	
15	91001003	TURBINE NOZZLE	
16	37274109	LID CVR ASY REC TANK-AJA	
17	90001041	FLOAT	
18	90001040	SEPARATOR CHANNEL	
19	90001042	FLOAT GLIDE	
20	90001266	SCREW-SELF TAPPING	
21	38777102	REC TANK ASY WELDED-AJA	
21	42272171	REC TANK ASY COMP-AJA	INCLUDES LID AND FLOAT ETC
22	90001050	SEAL	
23	90001049	LOWER HANDLE ASSEM RH-MV	INCLUDES 22, 34, 35
24	90001103	O-RING HOSE ENDS	
25	51661020	MEDALLION	
26	90001352	LATCH-UPPER HANDLE-MV	
27	90001077	AIR RETURN ELBOW	
28	90001071	DOOR-TOOL PORT	
29	90001078	SEAL-TOOL	
30	90001052	LOWER HANDLE ASSEM LH-MV	INCLUDES 31, 32, 48, 34
31	90001048	SPRING	
32	90001053	CONTROL ROD LOWER	
33	90001072	TOLERANCE SPACER	
34	90001037	SPRING	
35	90001051	REC TANK REL HANDLE	
36	21447003	SCREW	
37	37274108	LID CVR ASY SOL TANK-AJA	
38	39442048	CORD WRAP-AGS	
38	90001055	TOOL CADDY	
39	91001008	CLEANING TOOL HOSE-BM	
40	38613040	NOZZLE BODY W/BRUSH	
41	38777103	SOL TANK ASY WELDED-AJA	
41	90001259	SPRING VALVE	
41	90001260	VALVE SEAL	

- 41 90001261 VALVE STEM
- 42 25411015 HOSE CLAMP
- 43 90001075 TUBING
- 44 90001073 RESERVOIR-WELDED
- 45 90001076 TUBING
- 46 90001103 O-RING HOSE ENDS



1	90001103	O-RING HOSE ENDS	
2	21447242	SCREW-SELF TAPPING	
2	90001104	RECOVERY DUCT	
3	21447003	SCREW	
4	90001107	REAR WHEEL AXLE-RH	
5	90001065	WHEEL-REAR	
6	38331006	SPRING-TURBINE ACT	
7	90001064	HANDLE RELEASE PEDAL	
8	90001061	MOTOR COVER	
9	160017--	LOCK RING	
10	90001060	TURBINE ACTUATOR ARM	
11	90001067	TRUNNION COVER-RH	
12	90001111	SEAL-MOTOR COVER	
13	43613018	FILTER CASSETTE & SCREEN ASSM	
14	21447232	SCREW-SELF TAPPING-F	
15	21447246	SCREW-SV 3.125"	
16	43576197	MOTOR 12AMP	
17	38781048	MOTOR BASE SEAL	
18	34113004	MOTOR SEAL	
19	91001002	TURBINE & GEAR ASSEM	
19	91001075	TURBINE BEARING	
20	90001068	VALVE DOOR	
21	21447003	SCREW	
22	90001112	SWITCH	
23	90001062	SWITCH BRACKET	
24	90001105	PUMP ASSEM	
26	90001116	INDICATOR KNOB-AHB	
27	90001059	SEAL-RECOVERY DUCT	
28	90001036	MAIN BODY ASSEM	
29	90001106	SWITCH	
30	90001063	SWITCH ACTUATION PEDAL	
31	90001066	TRUNNION COVER-LH	
32	90001108	REAR WHEEL AXLE-LH	
33	21479438	SCREW	
34	21447236	SCREW	
35	48437029	BRUSH BLOCK-5 BRUSHES	
36	90001058	NOZZLE SEAL	
37	37275063	NOZZLE FRONT PLATE-CP	
38	91001007	BARE FLOOR CL TOOL FOAM	
39	37275064	NOZZLE BACK PLATE-CP	INCLUDES NOZZLE SEAL
40	90001109	ATTACHMENT CORD ASSEMBLY	
41	90001281	CORD RETAINER	
42	27479307	CABLE TIE	
42	56518199NC	OWNER MANUAL	