

This Owner's Manual is provided and hosted by [Appliance Factory Parts](#).

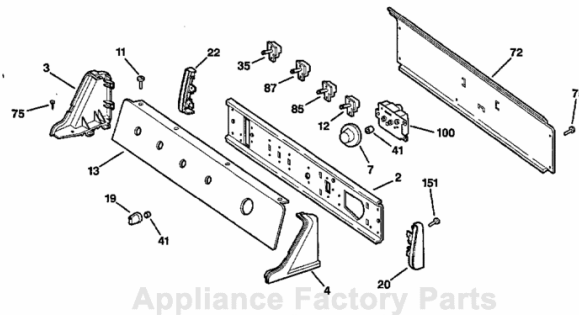


# Hotpoint NWXR473GT0WB Owner's Manual

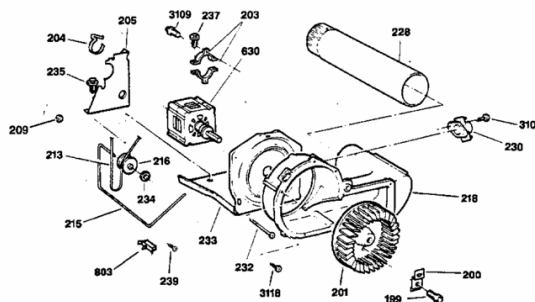
[Shop genuine replacement parts for Hotpoint  
NWXR473GT0WB](#)

MODEL(S) NKXR473GT0WW NWXR473GT0WB

BACKSPASH, BLOWER & DRIVE ASSEMBLY



BLOWER & DRIVE ASM.



[Find Your Hotpoint Dryer Parts - Select From 384 Models](#)

----- Manual continues below -----

# Dryer

## Owners Manual

---

	<b>Important Safety Information</b>	<b>3</b>
---	-------------------------------------	----------

	<b>Operating Instructions</b> <i>The Co-is on Your Dryer</i> <i>Other Dryer Features</i>	<b>8</b>
--	--	----------

	<b>Helpful Information</b> <i>Specialized Fabric Guide</i> <i>Loading Suggestions</i> <i>Care of Product</i>	<b>11</b>
---	---	-----------

	<b>If Something Goes Wrong</b> <i>Before You Call For Service</i> <i>Venting the Dryer</i> <i>Hotpoint Service Numbers</i> <i>Warranty, Back Cover</i>	<b>15</b>
---	--	-----------

**GE Answer Center®**  
**800.626.2000**

# HOTPOINT

---

## Welcome

Welcome to the **Hotpoint family**. We're proud of our **quality products** and we **believe** in dependable **service**. You'll see it in this **easy-to-use manual** and you'll hear it in the **friendly voices** of our customer service department.

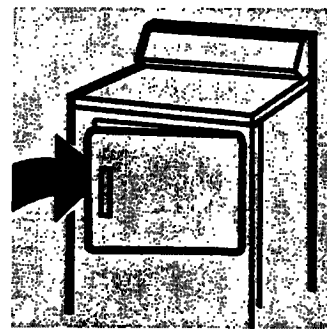
**Best of all**, you'll **experience** these **values** each time you do the **laundry**. **That's important**, because your new dryer will be part of your **family** for a long **time**.

## Start Here!

*Before  
using  
your  
dryer*

**Staple your receipt to the inside back cover of this manual.**

**Write down the model and serial numbers here.** They are on the label on the **front** of the **dryer** behind the door.



---

**Model number**

---

**Serial number**

---

**Date of purchase**

## Need Help?

*He@ us  
help you*

**800.626.2000**

**Before you call for service**, there are a **few** things you can do to help us serve you better.

**Read this manual.** It contains **instructions** to help you use and maintain your dryer **properly**.

**Saw time and money.** Check the section **titled "If Something Goes Wrong"** before **calling**. **This** section was designed to solve common problems you might encounter.

**If you do need service**, you can **relax** knowing help is **only** a phone **call** away. A **list of toll-free** customer **service** numbers is included on the inside back cover. **Or call** the GE Answer **Center**<sup>®</sup> at 800.626.2000, 24 hours a day, 7 days a **week**.

## Important Safety Information

*Read all safety information before using*

**⚠ WARNING:** For your safety the information in this manual must be followed to minimize the risk of fire or explosion or to prevent property damage, personal injury or loss of life.

Do not store or use gasoline or other flammable vapors and liquids in the vicinity of this or any other appliance.

Installation and service must be performed by a qualified installer, service agency or the gas supplier.

### **IF YOU SMELL GAS**

- 1** Do not try to light any appliance.
- 2** Do not touch any electrical switch; do not use any phone in your building.
- 3** Clear the room, building or area of all occupants.
- 4** Immediately call your gas supplier from a neighbor's phone. Follow the gas supplier's instructions.
- 5** If you cannot reach your gas supplier, call the fire department.

### **⚠ California Safe Drinking Water and Toxic Enforcement Act**

This act requires the governor of California to publish a list of substances known to the state to cause cancer, birth defects or other reproductive harm and requires businesses to warn customers of potential exposure to such substances.

Gas appliances can cause minor exposure to four of these substances, namely benzene, carbon monoxide, formaldehyde and soot, caused primarily by the incomplete combustion of natural gas or LP fuels.

Properly adjusted dryers will minimize incomplete combustion. Exposure to these substances can be minimized further by properly venting the dryer to the outdoors.



## Important Safety Information

*Read all safety information before using*



### Warning

**To reduce the risk of fire, electric shock, or injury to persons when using your appliance, follow basic precautions, including the following sections.**

### Safety Precautions

- Use this appliance only for its intended purpose as described in this Owner's Manual.
- This dryer **must** be properly **installed** and located in accordance with **the** Instigation Instructions before it is used. **If you** did not receive an Instigation Instructions sheet **with** your dryer, you can obtain one by calling, toll free, the GE Answer Center™, 800.626.2000.
- **Properly** ground to **conform** with **all** governing codes and ordinances. Follow details in **Installation** Instructions.
- **Install** or store where the **temperature is** above **50°F. (10°C.)**. Do not **install** the-r where it will be **exposed** to the weather.
- Connect to a properly rated, protected and **sized** power supply circuit to avoid **electrical** overload.
- Gas **dryers** **MUST** be **exhausted** to the **outside**. Carefully follow the **Exhausting details** in the Instigation Instructions.
- **Exhausting** electric **dryers** to the **outside** is **STRONGLY RECOMMENDED** to prevent large amounts of moisture and lint from being blown into the room. Carefully follow the **Exhausting** details in **the** Insolation Instructions.
- Do not repair or replace any part of the appliance or attempt any **servicing** unless **specifically** recommended in this Owner's Manual or in published user-repair instructions that you understand and have the **skills** to **carry** out.
- **When** disconnecting this appliance pull by the plug rather **than the** cord to avoid damage to the cord **or junction** of cord and plug. **Make** sure that the cord is located so that it will not be stepped on, tripped over or **otherwise** subjected to damage or stress.



- Exhaust **Duct—See** Installation Instructions. Use only rigid **metal** or flexible **metal 4" diameter** ductwork inside the **dryer** cabinet or for exhausting to the **outside**. **USE OF PLASTIC OR OTHER COMBUSTIBLE DUCTWORK CAN CAUSE A FIRE. PUNCTURED DUCTWORK CAN CAUSE A FIRE IF IT COLLAPSES OR BECOMES OTHERWISE RESTRICTED IN USE OR DURING INSTALLATION.**
- **Do not dry** articles **containing** rubber, plastic, or similar materials (such as padded **bras**, tennis shoes, **galoshes**, bath **mats**, rugs, bibs, baby pants, plastic bags, **pillows**, etc.) as **these** materials may melt or burn. Also, some rubber materials, when heated, can under **certain** circumstances produce fire by spontaneous combustion.
- Do not store items that may burn or melt (such as clothing, paper **material**, plastics or plastic containers, etc.) on top of the **dryer** during operation.
- **Garments** labeled "Dry Away from Heat" or "**Do** not Tumble **Dry**" (such as **life jackets** containing **Kapok**) must not be put in your dryer.
- **Do not wash** or **dry** articles **that** have been cleaned in, **washed** in, soaked in, or spotted with combustible or explosive **substances** (such as **wax**, paint, oil, gasoline, **degreasers**, **dry-cleaning** solvents, kerosene, etc.) which may ignite or explode. Do not add these substances to the wash water. Do not use these **substances** around your washer and/or **dryer** during operation.
- **Any** article on which you **have** used a cleaning solvent, or which contains flammable materials (such as cleaning cloths, mops, towels used in beauty salons, restaurants, or barbershops, **etc.**) must not be placed in or near the **dryer until all** traces of these flammable liquids or solids and their fumes have been removed. There are many highly flammable items used in homes such as acetone, denatured alcohol, gasoline, kerosene, some household cleaners, some spot removers, turpentine, waxes, wax removers and products containing petroleum **distillates**.



## Important Safety Information

### *Read all safety information before using*

- Clean the lint filter before each load to prevent lint accumulation inside the **dryer** or in **the** room. **DO NOT OPERATE THE DRYER WITHOUT THE LINT FILTER IN PLACE.**
- Keep the area **around and** underneath your appliances free **from** the accumulation of combustible **materials, chemicals, etc.**
- The interior of the machine and the exhaust duct connection inside the **dryer** should be cleaned periodically **by a qualified individual.**
- Never reach into the **dryer** while the drum is moving. **Before** loading, unloading or adding clothes, wait until the drum has completely stopped.
- Do not use fiberglass articles in your dryer. Skin irritation could result **from** the remaining glass particles that may be picked up by **clothing** during **subsequent dryer** uses.
- The **laundry** process can reduce the flame **retardancy** of fabrics. To avoid such a **result**, the garment manufacturer's care instructions should be **followed very** carefully.
- Close **supervision** is necessary if this appliance is used by or near children. Do not allow children to play inside, on, or with this appliance or any discarded appliance. Dispose of discarded appliances and shipping or packing materials properly. **Before** discarding a **dryer**, or removing from **service**, remove **the** door of the **dryer** compartment.
- Keep **all** laundry aids (such as detergents, bleaches, fabric softeners, etc.) out of **the** reach of children, preferably in a locked cabinet. **Observe all** warnings on container labels to avoid personal **injury.**
- **Keep the** floor around your appliances clean and **dry** to reduce the possibility of slipping.
- To **minimize** the possibility of electric shock, unplug this appliance from the power supply or disconnect the **dryer** at the household distribution panel by removing the fuse or switching off the circuit breaker before attempting any maintenance or cleaning (except the removal and cleaning of the lint filter).
- **NOTE:** Turning the Cycle Selector knob to an **OFF** position does **NOT** disconnect the appliance from the power supply.



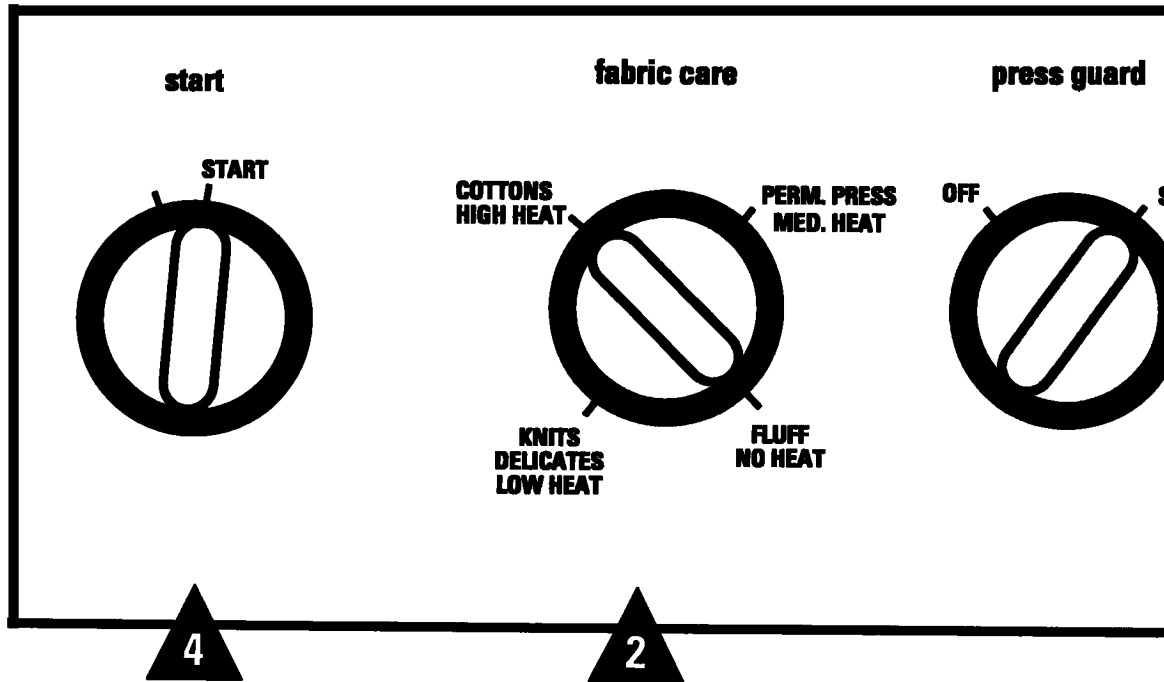
- **Do not tamper with** the controls.
- **Do not** operate this appliance **if it** is damaged, **malfunctioning**, partially disassembled, or has missing or broken **parts**, including a damaged cord or plug.
- **Never climb on or** sit on **the** dryer top.
- **If yours** is a gas **dryer**, it is equipped **with** an automatic electric ignition and does not have a pilot light. **DO NOT ATTEMPT TO LIGHT WITH A MATCH.** Burns may **result from** having your hand in **the** vicinity of the burner when the automatic ignition may turn on.
- You may wish to soften your laundered fabrics or reduce the static electricity in them by using **dryer-applied** fabric softeners or an antistatic conditioner. We recommend you use either a fabric softener in **the wash cycle**, according to the **manufacturer's** instructions for those products, or **try** a **dryer-added** product for which **the** manufacturer gives written assurance on the package that their product can be safely used in your dryer.
- **Service** or performance **problems** caused by the use of **these** products are the responsibility of the manufacturers of those products and are not covered under **the warranty** of this appliance.

***SAVE THESE INSTRUCTIONS***

# Operating Instructions



The controls on your dryer



## A Clean the Lint Filter

Clean the lint filter each time you use the dryer.

**CAUTION:**

Do not operate the dryer without the lint filter in place.

## A Fabric Care Selections

Always follow Fabric Manufacturer's Care Label or instructions when laundering. Use this chart as a general guide.

Drying Selections	Usage
Cottons/High Heat	For regular to heavy cottons.
Perm. Press/Med. Heat	For synthetics, blends and items labeled "permanent press."
Knits Delicates/Low Heat	For delicates, synthetics and items labeled "tumble dry low."
Fluff/No Heat	For "fluffing" items without heat. Use the Timed Dry cycle.

# Cycle Descriptions

## Automatic Drying Cycles

Cycles automatically sense fabric dryness

### Auto Perm. Press

For synthetic blends and delicates. Select **More Dry** for heavier loads, **Less Dry** for lighter loads.

### Auto Cottons

For cottons and most linens. For most normal loads set at **auto cottons**. Set towards **More Dry** for heavier and wetter fabrics, **Less Dry** for lighter fabrics.

## Timed Dry Cycles

Cycles run for a selected time

### Timed Dry

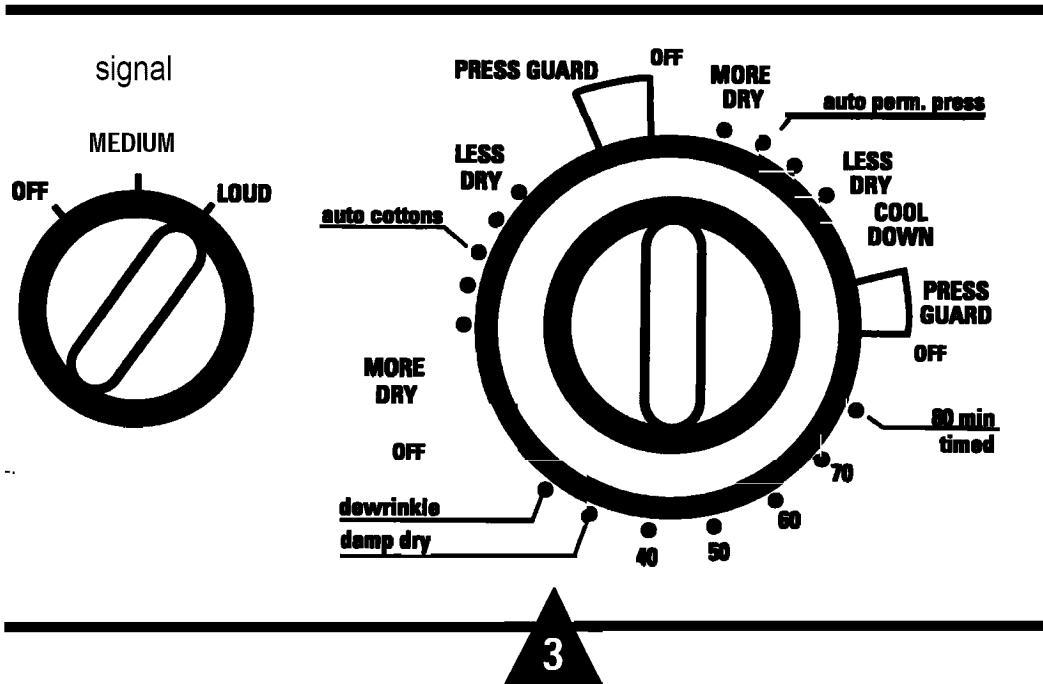
Set the Cycle Selector at the desired drying time.

### Damp Dry

To leave items partially dry set Cycle Selector on Damp Dry setting.

### Dewrinkle

For removing wrinkles from items that are clean and dry or that are very lightly damp. Set the Cycle Selector on the Dewrinkle setting.



## NOTE:

Automatic drying times will vary according to the type of heat used (Electric, Natural or LP gas), size of load, types of fabrics, wetness of clothes and condition of exhaust ducts.

## A Selecting Drying Cycle

Select an automatic or timed cycle. See the above Cycle Descriptions.

## A Starting Dryer

- Close the dryer door.
- Select START.

Opening the door during the operation will stop the cycle. To restart the dryer, close the door and select START to complete the cycle.

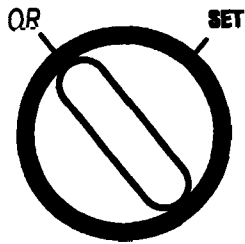
See next page for other dryer features



## Operating Instructions

### Other dryer features your model has

#### Press Guard



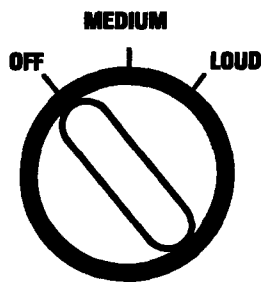
Use this option to **minimize** the **wrinkles** in clothes. **The** option provides approximately 15 minutes of **no-heat** tumbling after the clothes are dry.

**This** option can only be **used with** the Automatic cycles.

#### **HINT:**

**If the Signal option is selected, the Signal will sound at the end of the drying time and will sound several times during the Press Guard cycle. This will remind you that the cycle is almost complete.**

#### Signal



**The** signal control can be set at **OFF, MEDIUM** or **LOUD**.

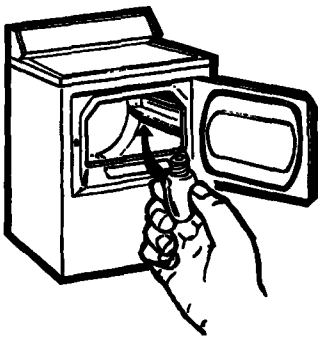
**This** signal **will sound just** before the end of the cycle to remind you to remove the clothes.

**If you** selected the Press Guard option **the** signal **will** sound at the end of **the** drying time and till sound **several** times during the Press Guard cycle. **This will** remind you that the **cycle** is almost complete.

#### **NOTE:**

- **Remove garments promptly at the sound of the signal. Place clothes on hangers w wrinkles won't set in.**
- **Use the Signal especially when drying fabrics like polyester knits and permanent press. These fabrics should be removed promptly so wrinkles wont set in.**

#### Drum Lamp



**Before** replacing the light bulb, be sure to unplug the **dryer power** cord or disconnect the dryer at the household distribution panel by removing the fuse or **switching** off the circuit **breaker**. Reach above **dryer** opening from inside **the** drum. Remove the bulb and replace **with** the same **size** bulb.

### Specialty Care Guide



**Always follow Fabric Manufacturer's Care Label or instructions when laundering. Otherwise use the information below as a general guide.**

<i>Item</i>	<i>Suggested Care</i>
<b>Pillows</b>	<p>Mend any holes or weak seams where feather or filling could escape. <b>Dry</b> only one <b>pillow</b> at a time. Stop dryer occasionally and shake pillow, redistributing filling for even <b>drying</b>. Check pillow at the end of <b>drying</b> time. If it is not completely <b>dry</b>, reset <b>dryer</b> for more <b>drying</b> time.</p> <p><b>Dry</b> on low heat only.</p> <p><b>CAUTION: Do</b> not dry pillows containing foam rubber.</p>
<b>Blankets</b>	<p>Add <b>2-4 dry towels</b> and one <b>blanket</b> and set timer for 2&amp;25 minutes. <b>Dry only one blanket at a</b> time. Do not <b>set control for more</b> than 25 minutes. At <b>the</b> end of <b>drying cycle</b> block the blanket back to its original shape. Allow blanket to <b>dry</b> thoroughly <b>before</b> storing.</p>
<b>Cotton</b>	Use a medium heat <b>drying</b> setting.
<b>Synthetic</b>	Use a low heat <b>drying</b> setting.
<b>Down</b>	Use a low heat <b>drying</b> setting.
<b>Extra Large Items</b> (Includes comforters, blankets and mattress pads.)	<p>Use a low heat drying setting.</p> <p><b>Dry</b> only one extra large <b>item</b> at a time. Set <b>dryer</b> for 20 minutes. <b>When</b> time <b>is up</b>, check and redistribute load. Reset dryer and check after 15 minutes. <b>When</b> time is up, check and redistribute load. Reset timer <b>and check at 5 minute intervals. Check after each 5 minutes</b> to ensure articles do not <b>fill</b> dryer drum. <b>Large, wet articles should</b> have ample room in the <b>dryer</b>, but as they dry and <b>fluff up</b> they may not have room to tumble.</p> <p><b>CAUTION: Items</b> without room to tumble may block airflow and could result in scorched items. <b>Dry</b> mattress pads <b>separately</b>. Use a low heat <b>drying</b> setting.</p>



# Loading

### Sorting

As a **general** rule, if clothes are sorted **properly for** the washer, they are sorted **properly** for the dryer.

#### **Sort by color**

(Separate colorfast from non-colorfast fabrics\*)

- Whites
- Lights
- Darks

#### **Separate by fabric type**

- Cottons and linens
- Permanent press cottons and blends
- Synthetic and poly knits
- Delicates

#### **Separate lint producers from lint collectors**

- Lint producers: terry cloth and chenille
- Lint collectors: velveteen and corduroy

#### **Sort by weight**

- Heavy Items
- Light Items

\* Non-colorfast fabrics may bleed or fade. Sort by individual color.

### Loading Hints

- Avoid **drying very small** loads.
- **Sort** clothes by weight so you won't have to **run** an **extra cycle** for one or two heavier, slower **drying items**.
- Do not add fabric softener sheets once the load has become warm. **This** may cause **fabric softener** stains.
- Do not overload. **This** causes inefficient operation and **unnecessary wrinkling**. Clothes need to tumble **freely**.
- **Do not dry** the following items:
  - **Fiberglass** items
  - **Woolens**
  - Rubber **coated items**
  - **Plastics**
  - 1~~ with plastic trim
  - **Foam-filled items**

# Care & Cleaning



## Interior

The drum is **rust-resistant**. However, colored fabrics which lose color or bleed in **the washer** may cause **discoloration** of the-r drum. We recommend that the **dryer** drum be **cleaned with a cloth** using a

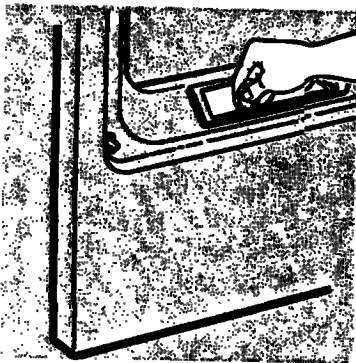
**detergent and water paste or a mild abrasive**, such as **Soft Scrub™**. **Rinse thoroughly**. Then **tumble-dry several wet rags** or old **towels** for 20 to 30 minutes before using the **dryer normally**.

## Exterior

Wipe off any **spills** or washing compounds. Wipe or dust with a damp cloth. **Try** not to strike the **surface with** sharp objects. Dryer control panel and **finishes** may be damaged by some **laundry pretreatment soil** and stain **remover products** if **such** products are sprayed on or **have** direct contact with **the dryer**.

**Apply** these pretreatment **products** away **from** the dryer. The **fabric** may **then** be washed and dried normally. Damage **to** your **dryer** caused by **pretreatment** products is not **covered** by your **warranty**.

## Lint Filter



**Before every dryer** use, **clean** the **lint filter**. It is **easier** to remove the lint when your fingers are **moistened**.

**To keep your dryer operating at peak performance**, be sure to have a technician vacuum the lint from the machine every three years.

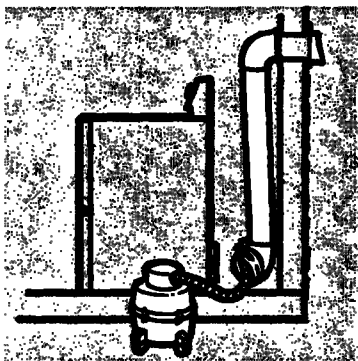
## Storage

To store your **dryer for a** short period of time, disconnect the power supply and clean the **lint filter**.



## Helpful Information

### Exhaust Duct

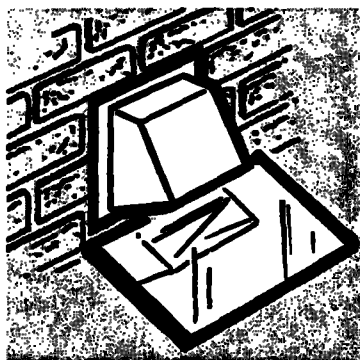


**Inspect and clean** the dryer **exhaust ducting** at least once a year to **prevent clogging**. A **partially clogged exhaust** can lengthen the drying time.

To clean **the exhaust** duct follow **these** steps:

- 1 Turn off electrical supply** by disconnecting the **plug from the wall socket**.
- 2 Disconnect exhaust duct** from the **dryer**.
- 3 Vacuum the exhaust** duct with the hose **attachment**.
- 4 Reconnect the exhaust duct** to the **dryer**.

### Exhaust Hood



**C**heck the **side** of the exhaust hood with a **m**irror to rid of debris

- **Make sure** the inside flaps of the **exhaust hood move freely** (you may want to check with a **mirror**).
- **Make sure** inside **flaps** are **fully** open when dryer is operating.
- **Make sure** there **is not wild life** (**birds, insects, etc.**) **nesting** inside the **exhaust** duct or hood.

## If Something Goes Wrong

### Before you call for service



<b>Problem</b>	<b>Possible Causes</b>	<b>What to Do</b>
<b>Dryer doesn't start</b>	<b>Dryer is unplugged</b>	• <b>Make sure</b> the dryer plug <b>is</b> pushed <b>completely into</b> the <b>outlet</b> .
	<b>Fuse is blown/circuit breaker is tripped</b>	• <b>Check the house fuse/circuit breaker box and replace fuse or reset breaker.</b> <b>NOTE:</b> Most electric dryers use two breakers.
<b>Dryer doesn't heat</b>	<b>Fuse is blown/circuit breaker is tripped, the dryer may tumble but not heat</b>	• <b>Check the house fuse/circuit breaker box and replace fuse or reset breaker.</b>
	<b>Gas service is off</b>	• <b>Make sure</b> gas shutoff at <b>dryer</b> and <b>main shutoff</b> are <b>fully open</b> .
<b>Dryer shakes or makes excessive noise</b>	<b>Some shaking/noise is normal. Dryer may be sitting unevenly</b>	• <b>Move dryer to an even floor space, or adjust as necessary until even.</b>
<b>Greasy spots on clothes</b>	<b>Improper use of fabric softener</b>	• <b>Follow directions on fabric softener package.</b>
	<b>Drying dirty items with clean ones</b>	• <b>Use your dryer to dry only clean items. Dirty items can stain clean items and the dryer.</b>
	<b>Clothes were not completely clean</b>	• <b>Sometimes stains which cannot be seen when the clothes are wet "appear" after drying. Use proper washing procedures before drying.</b>
<b>Lint on clothes</b>	<b>Lint filter is full</b>	• <b>Clean lint screen before each load.</b>
	<b>Improper sorting</b>	• <b>Sort lint producers (like chenille) from lint collectors (like corduroy).</b>
	<b>Static electricity can attract lint</b>	• <b>See suggestions in this section under STATIC.</b>
	<b>Overloading</b>	• <b>Separate large loads into smaller ones.</b>
	<b>Paper, tissue, etc. left in pockets</b>	• <b>Empty all pockets before laundering clothes.</b>



## If Something Goes Wrong

<i>Problem</i>	<i>Possible Causes</i>	<i>What to Do</i>
<b>Static occurs</b>	<b>Overdrying</b>	<ul style="list-style-type: none"> <li>• Try a fabric softener.</li> <li>• Adjust <b>controls</b> for less <b>drying</b>.</li> </ul>
	No fabric <b>softener was used</b>	• Try a fabric softener.
	<b>Synthetics, permanent press and blends can cause static</b>	• Try a fabric <b>softener</b> .
<b>Clothes take too long to dry</b>	<b>Improper sorting</b>	• Separate <b>heavy items</b> from <b>light weight items</b> (generally, a <b>well-sorted washer load</b> is a <b>well-sorted dryer load</b> ).
	<b>Large loads of heavy items (like beach towels)</b>	• <b>Large</b> , heavy loads contain more moisture and <b>take</b> longer to dry. Separate large, heavy items into <b>smaller</b> loads to speed <b>drying</b> time.
	<b>Controls improperly set</b>	• <b>Match</b> control settings to the load <b>you are drying</b> .
	<b>Lint filter is full</b>	• <b>Clean lint filter before every load</b> .
	<b>Improper or obstructed ducting</b>	• <b>Check</b> instigation instructions <b>for</b> proper <b>ducting/venting</b> .
		• <b>Make sure ducting</b> is clean, free of <b>kinks</b> and <b>unobstructed</b> .
		• Check to see if outside <b>wall damper</b> operates easily.
	• <b>See</b> the Venting <b>the</b> Dryer section.	
<b>Blown fuses or tripped circuit breakers</b>	• <b>Replace fuses</b> or reset circuit <b>breakers</b> . Since most <b>dryers</b> use 2 fuses/breakers, make sure both are operating.	
<b>Overloading/combining loads</b>	• <b>Do not</b> put more <b>than</b> one-her load in the dryer at a time.	
<b>Underloading</b>	• <b>If You are drying</b> only one or <b>two</b> items, add a <b>few</b> items to ensure proper tumbling.	

<i>Problem</i>	<i>Possible Causes</i>	<b><i>What to Do</i></b>
<b><i>Clothes are wrinkled</i></b>	<b>Overdrying</b>	<ul style="list-style-type: none"> <li>● <b>Select</b> a shorter <b>drying time</b>.</li> <li>● <b>Remove items</b> while <b>they still</b> hold a slight amount of moisture.</li> </ul>
	<b>Letting items sit in dryer after cycle ends</b>	<ul style="list-style-type: none"> <li>● <b>Remove</b> items when cycle ends and fold or hang immediately.</li> </ul>
<b><i>Clothes shrink</i></b>	<b>Some fabrics will naturally shrink when washed. Others can be safely washed, but will shrink in the dryer.</b>	<ul style="list-style-type: none"> <li>● <b>To avoid shrinkage, follow garment care labels exactly.</b></li> <li>● <b>Some items may be pressed back into shape after drying.</b></li> <li>● If you are concerned about <b>shrinkage</b> in a <b>particular</b> item, do not machine wash or tumble dry it.</li> </ul>



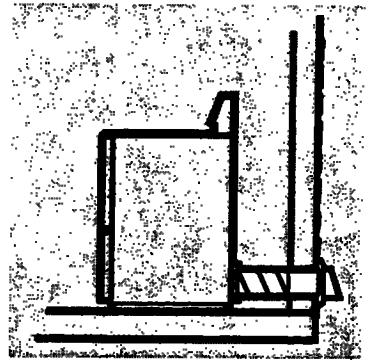
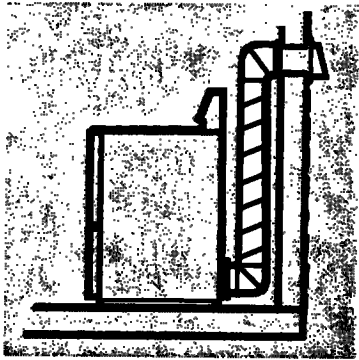
# If Something Goes Wrong

## Venting the Dryer

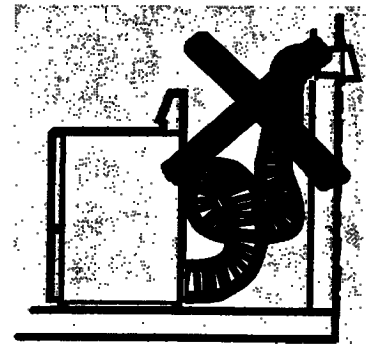
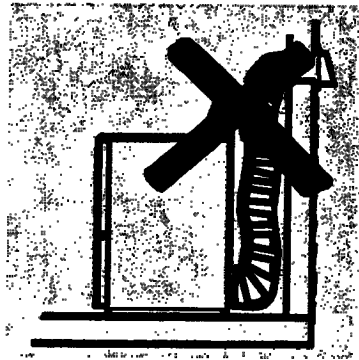
For the best drying performance the dryer needs to be properly vented. **Carefully follow the details on Exhausting in the Installation Instructions.**

- Use only rigid metal or flexible metal 4" diameter ductwork inside the dryer cabinet or for exhausting to the outside.
- Do not use plastic or other combustible ductwork.
- Use the shortest length possible.
- Do not-h or collapse.
- Avoid resting the duct on sharp objects.
- Venting must conform to local building codes.

### Correct Venting



### Incorrect Venting











## Hotpoint Service Numbers

*We'll be there!*

### GE Answer Center

**800.626.2000**

Whatever your question about any Hotpoint major appliance, GE Answer Center® information service is available to help. Your call—and your question—will be answered promptly and courteously.

And you can call any time. GE Answer Center® service is open 24 hours a day, 7 days a week.

### In-Home Repair Service

**800-GE-CARES  
(800-432-2737)**

A GE consumer service professional will provide expert repair service, scheduled at a time that's convenient for you. Many GE Consumer Service company-operated locations offer you service today or tomorrow, or at your convenience (7:00 a.m. to 7:00 p.m. weekdays, 9:00 a.m. to 2:00 p.m. Saturdays).

Our factory-trained technicians know your appliance inside and out—so most repairs can be handled in just one visit.

### For Customers With Special Needs

**800.626.2000**

Upon request, GE will provide Braille controls for a variety of GE appliances, and a brochure to assist in planning a barrier-free kitchen for persons with limited mobility. To obtain these items, free of charge, call 800.626.2000.

Consumers with impaired hearing or speech who have access to a TDD or a convention teletypewriter may call 800-TDD-GEAC (800-833-4322) to request information or service.

## Service Contracts

**800-626-2224**

You can have the secure **feeling** that GE Consumer **Service** will still **be there after your** warranty **expires**. Purchase a GE **contract** while your **warranty is still in effect** and you'll receive a **substantial discount**. With a **multiple-year** contract, you're assured of **future service** at today's prices.

## Parts and Accessories

**800-626-2002**

Individuals qualified to service their own appliances can have parts or accessories sent directly to their home. The GE parts system provides access to over 47,000 parts...and all GE Genuine Renewal Parts are fully warranted. VISA, MasterCard and Discover cards are accepted.

Care and cleaning instructions contained in this manual cover procedures to be performed by any user. Other servicing generally should be referred to qualified service personnel. Caution must be exercised, since improper servicing may cause unsafe operation.

## Further Service

We're proud of our **service** and want you to be pleased. **If for** some reason you are not **happy with** the **service** you **receive**, here are three steps to **follow** for **further** help.

**First**, contact the people who **serviced** your **appliance**. **Explain** why you are not pleased. **In** most cases, **this will** solve the problem.

**Next**, if you are **still** not pleased, **write** all the **details**—including your phone number—to:

Manager, Consumer Relations  
Hotpoint Appliances,  
Appliance Park  
Louisville, KY 40225

**Finally**, if your problem is still not resolved, write:

Major Appliance Consumer  
Action Program  
20 North Wacker Drive  
Chicago, IL 60606

# DRYER WARRANTY

*Staple sales slip or cancelled check here. Proof of original purchase date is needed to obtain service under warranty.*

## What is covered

### FULL ONE-YEAR WARRANTY

For one year from date of original purchase, we will provide, free of charge, parts and service labor in your home to repair or replace *any part of the dryer* that fails because of a manufacturing defect.

### LIMITED ADDITIONAL FOUR-YEAR WARRANTY

From the second through fifth year from date of original purchase, we will replace, free of charge, an extra large or super capacity dryer drum that fails because of a manufacturing defect. You pay for the service trip to your home and service labor charges.

\*\*\*\*\*  
This warranty is extended to the original purchaser and any succeeding owner for products purchased for ordinary home use in the\* mainland states, Hawaii and Washington, D.C. In Alaska the warranty is the same except that it is LIMITED because you must pay to ship the product to the service shop or for the service technician's travel costs to your home.

All warranty service will be provided by our Factory Service Centers or by our authorized Customer Care® servicers during normal working hours.

Should your appliance need service, during warranty period or beyond, call 800-GE-CARES (800-432-2737).

## What is not covered

- Service trips to your home to teach you how to use the product.

Read your Owner's - A If you then have any questions about operating the product, please contact your dealer or our Consumer Affairs office at the address below, or call, toll free:

GE Answer Center™  
800.626.2000  
consumer information service

- Improper installation.

If you have an installation problem, contact your dealer or installer. You are responsible for providing adequate electrical, exhausting and other connecting facilities.

• Replacement of house fuses or resetting of circuit breakers.

- Failure of the product if it is misused, or used for other than the intended purpose or used commercially.

- Damage to product caused by accident, fire, floods or acts of God.

**WARRANTOR IS NOT RESPONSIBLE FOR CONSEQUENTIAL DAMAGES.**

Some states do not allow the exclusion or limitation of incidental or consequential damages, so the above limitation or exclusion may not apply to you. This warranty gives you specific legal rights, and you may also have other rights which vary from state to state. To know what your legal rights are in your state, consult your local or state consumer affairs office or your state's Attorney General.

Warrantor: General Electric Company. If further help is needed concerning this warranty, write: Manager—Consumer Affairs, GE Appliances, Louisville, KY 40225

Part No. 175D1807P085  
Pub. No. 39-9332

6-85 CS

Printed in Canada

NWXR473ET NWXR473G  
NKXR473ET NKXR473G1