

This Owner's Manual is provided and hosted by [Appliance Factory Parts](#).



# HOOVER S1105 Owner's Manual

[Shop genuine replacement parts for HOOVER S1105](#)

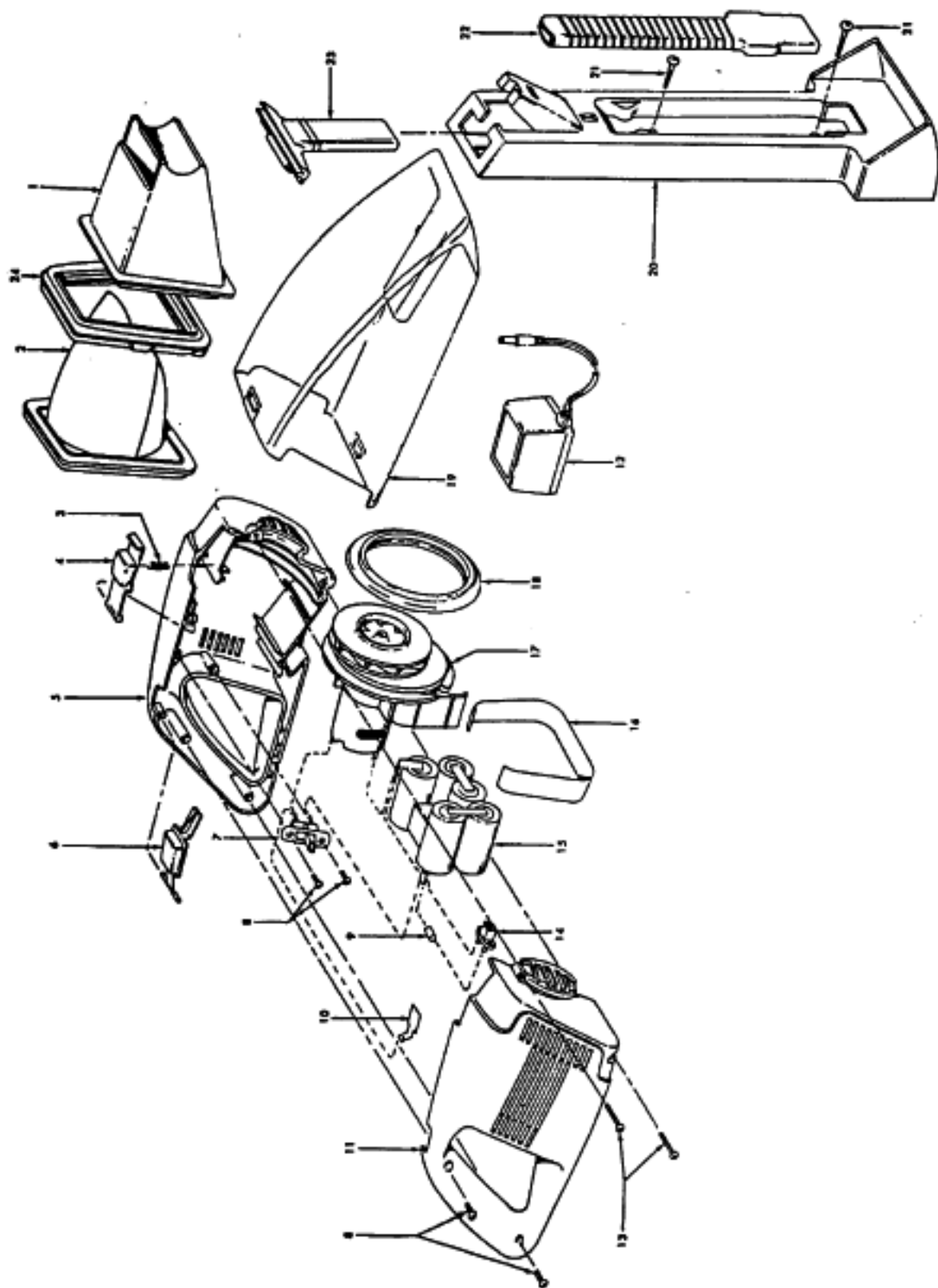


[Find Your HOOVER Vacuum Cleaner Parts - Select From 1456 Models](#)

----- Manual continues below -----

# Wet/Dry Hand Vac

Models S1105, S1117-981,  
S1117-900



## Wet/Dry Hand Vac

## Models S1105, S1117-981, S1117-900

| Ref. No. | Part No. | Description   |
|----------|----------|---|
| 1        | 59139101 | Separator - S1105                                     |
|          | 59139170 | Separator - S1117-981, S1117-900                      |
| 2        | 59139102 | Filter Support Asm.                                   |
| 3        | 59139103 | Latch Button Spring                                   |
| 4        | 59139104 | Latch Button - S1105                                  |
|          | 59139171 | Latch Button - S1117-981, S11 17-900                  |
| 5        | 59139105 | Housing - L.H. - S1105                                |
|          | 59139172 | Housing L.H. - S1117-981, S1117-900                   |
| 6        | 59139106 | Switch Button - S1105                                 |
|          | 59139173 | Switch Button - S1117-981, S1117-900                  |
| 7        | 59139107 | Switch  |
| 8        | 59139113 | * Screw-Self Tapping (4)                              |
| 9        | 59139109 | Diode   |
| 10       | 59139110 | Test Terminal   |
| 11       | 59139111 | Housing - R.H. - S1105                                |
|          | 59139174 | Housing - R.H. - S1117-981, S11 17-900                |
| 12       | 59139112 | Transformer - S1105                                   |
|          | 59139126 | Transformer - S11 17-981, S1117-900                   |
| 13       | 59139113 | * Screw-Self Tapping                                  |
| 14       | 59139114 | DC Jack   |
| 15       | 59139116 | Battery Asm. - Five Pack                              |
|          | 59139115 | Battery Asm. - Three Pack, S11 17-981, S1117-900      |
| 16       | ---      | Battery Support Tape                                  |
| 17       | 59139117 | Motor Support, Motor & Fan Asm. S1105                 |
|          | 59139127 | Motor Support, Motor & Fan Asm. S1117-981, S111 7-900 |
| 18       | 59139118 | Housing Seal  |
| 19       | 59139119 | Dirt Cup - S1105                                      |
|          | 59139128 | Dirt Cup S1117-981, S1117-900                         |
| 20       | 59139120 | Wall Rack Bracket S1105                               |
|          | 59139176 | Wall Rack Bracket S11 17-981, S11 17-900              |
| 21       | 59139121 | Screw (Anchor Set) (2) - S1105                        |
|          | 40201142 | + Wall Rack Hardware Asm. - S11 17-981, S1117-900     |
| 22       | 59139122 | Crevice Tool  |
| 23       | 59139123 | Squeegee  |
| 24       | 59139130 | Filter Seal   |
|          | 59139177 | Filter Seal S11 17-981, S11 17-900                    |

## PACKAGING MATERIAL

|          |                                 |
|----------|---------------------------------|
| 59139135 | + Carton S1105                  |
| 59139178 | + Carton - S1117-981, S1117-900 |
| 59139136 | + Handle Support                |
| 59139137 | + Charger/End Support           |
| 59139138 | + Dirt Cup/Wall Bracket Support |
| 59139048 | + Owner Manual - S1105          |
| 59139168 | + Owner Manual - S1117-981      |