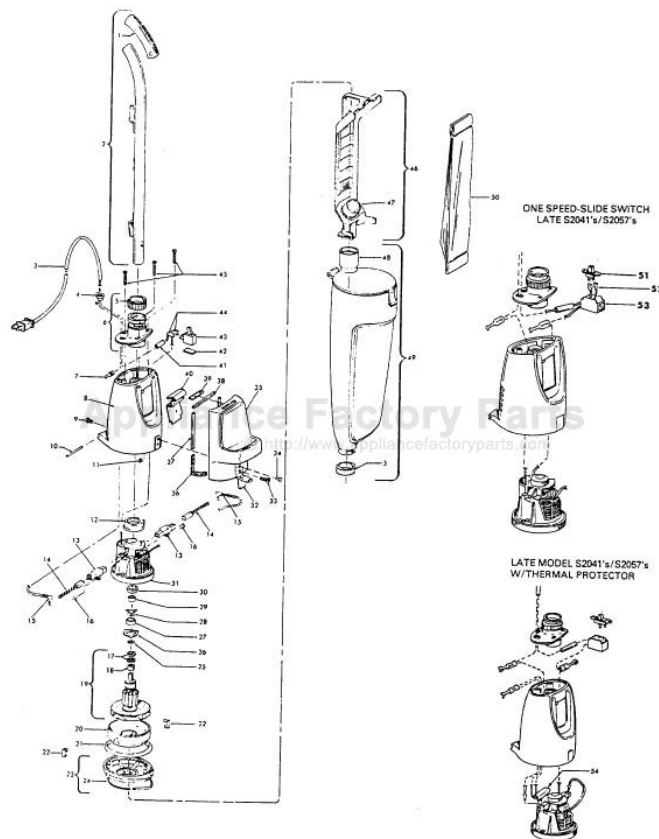


This Owner's Manual is provided and hosted by Appliance Factory Parts.



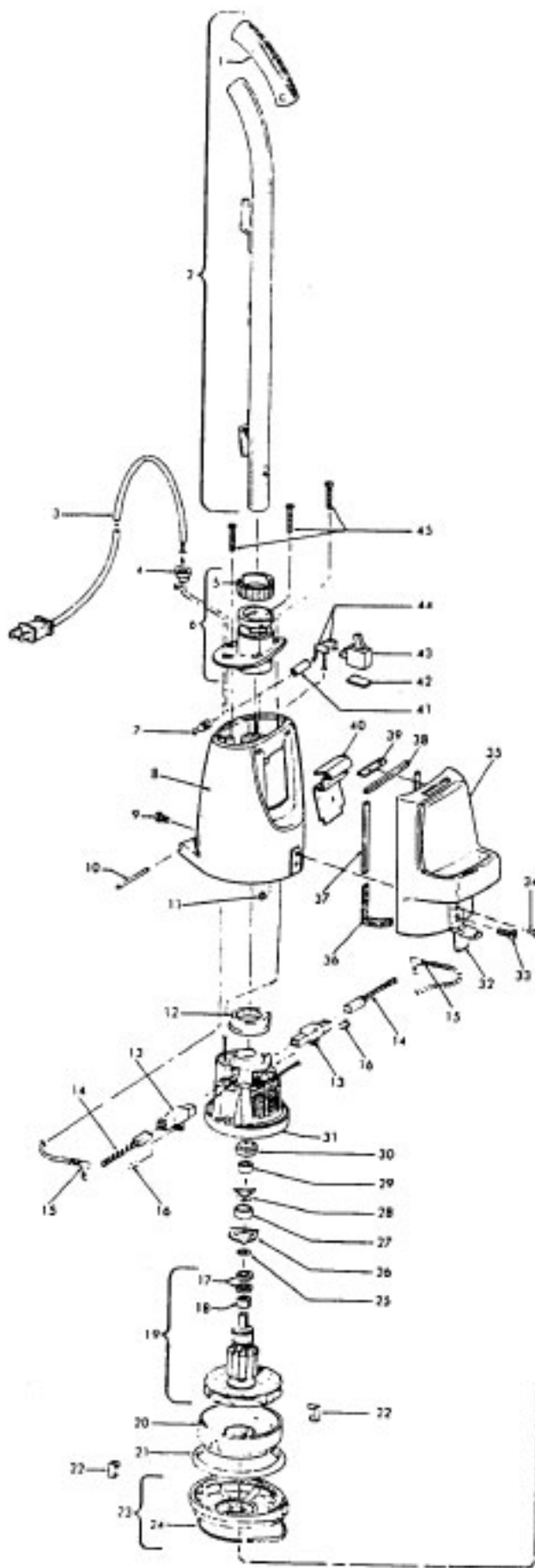
HOOVER S2057 Owner's Manual

[Shop genuine replacement parts for HOOVER S2057](#)

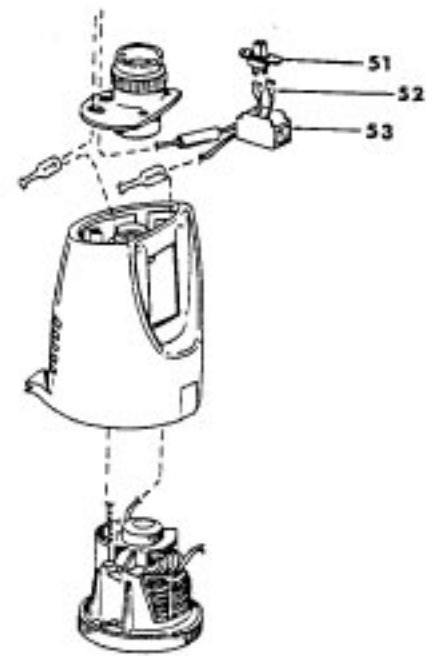


[Find Your HOOVER Vacuum Cleaner Parts - Select From 1456 Models](#)

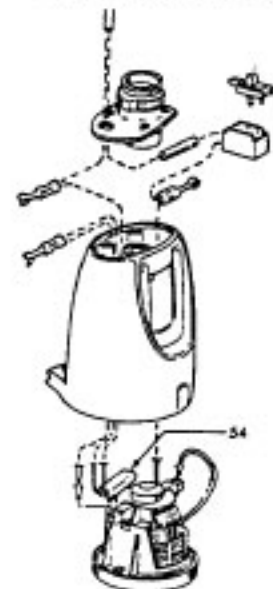
----- Manual continues below -----



ONE SPEED-SLIDE SWITCH
LATE S2041's/S2057's



LATE MODEL S2041's/S2057's
W/THERMAL PROTECTOR



Quik-Broom - Single Speed

Model S2041, S2057

Ref.	Part Description	No.	No.	Ref.	Part Description	No.	No.
1	12230JM	+	Handle Grip - S2041	36	34544001		Exhaust Diffuser - L. H. - S2041
2	48645023		Handle/Grip Assm. - S2041		34544002		Exhaust Diffuser - R.H. Shown S2041
	48643084		Handle - JM - S2057	37	34123013		Handle & Muffler Foam Seal (2) - S2041
3	46383068		Attach. Cord	38	34123012		Handle & Muffler Foam Seal - S2041
4	163768		Strain Relief	39	39383034		Indicator Lens - BU - S2041
5	36153009		Latch Ring	40	51151045	+	Full Bag Indicator - BZ - S2041
6	42227070	+	Closure Plate/Latch Ring - Model S2041's/S2057's equipped w/toggle Switch	41	31722007	*	Insulator
	42227098		Closure Plate/Latch Ring - Model S2041's/S2057's equipped w/Slide Switch	42	15317	+*	Switch Pad - Model S2041's/S2057's equipped w/Toggle Switch
7	12227		Insulated Terminal	43	12971		Switch (Toggle) Early Model S2041 's/ S2057 's
8	42222100		Motor Housing w/thermal Protector - Model S2041	44	161350	+*	Terminal - Model S2041's/S2057's equipped w/Toggle Switch
	42222093		Motor Housing w/thermal Protector - Model S2057	45	15738EF	+*	Screw - Self Tapping
9	12954	*	Screw - Self Tapping	46	43615001		Cassette Assm.
10	31514001		Hinge Pin	47	43523001	+	Adapter Tube & Valve
11	161549	+	Washer	48	32352001		Cassette Gasket
12	15316	+	Motor Mount	49	42223112		Bag Housing Assm. - S2041
13	161749AG	+	Brush Holder		42223107		Bag Housing Assm. - DS - S2057
14	47311004		Motor Brush & Spring	50	4010002E		Throw Away Bag - (3-Pk.)
15	161876	+	Terminal	51	28177005	+	Switch (Slide) - Late Model S2041 's/ S2057 's
16	162911	+	Screw	52	27666702	*	Terminal - Model S2041's/S2057's equipped w/Slide Switch
	21312759	+*	Washer	53	37922002		Terminal Shield - Model S2041 's/ S2057 's equipped w/Slide Switch
	162910	+*	Nut	54	28382028		Thermal Protector - Late Model S2041 's, S2057 's
17	15278	*	Fiber Washer	ITEMS NOT ILLUSTRATED			
18	49344	+*	Insulator		43576019	+	Motor Assm. Comp. - Single Speed - Toggle Switch - Early Model S2041 's/ S2057 's
19	44731003		Armature & Fan		43576051		Motor Assm. Comp. - Single Speed Slide Switch - Late Model S2041 's/ S2057 's
20	163441		Fan Housing & Bearing Assm.		52135016	+	Decal (Handle/Muffler Assm.) - S2041
21	15315	+	Motor Gasket		21447026	+*	Screw - Self Tapping (2) (Secures Item 35 Handle/Muffler Assm. to Item 8 Motor Housing Assm.) - S2041
22	163416		Clip		16547	+	Medallion (Motor Housing) - S2057
23	19586AG	+	Bulkhead	PACKAGING MATERIAL			
24	15330	+	Bag Housing Gasket		164319	+	Carton - S2057
25	21312719	+*	Washer		58134029	+	Carton - S2041
26	15850	+	Bearing Retainer Support		58315005	+	Carton Support
27	12012	+*	Absorbent Washer		56512054	+	Owner Manual - S2041
28	15851	+*	Bearing Retainer		56512071	+	Owner Manual - S2057
29	24117209	+	Motor Bearing				
30	15295	*	Felt Washer				
31	45312054	+	Motor Case & Field Assm. - Model S2041's/S2057's equipped w/toggle Switch				
	45312055		Motor Case & Field Assm. - Model S2041's/S2057's equipped w/Slide Switch				
32	23715105		Latch				
33	21447003	*	Screw - Self Tapping - S2041				
	12954	*	Screw - Self Tapping - S2057				
34			Pop Rivet - 1/8" Dia. x 3/8" Long - S2041				
	16195	+*	Rivet - S2057				
35	48662007		Handle/Muffler Assm. (Incl. Items 36, 37,38,39,40) - S2041				