

Quik Broom II

Model S2155

Ref. No.	Part No.	Description
1	N/A	Upper Handle Assem.
2	46363154	Attach. Cord - MV
3	27482301	Strain Relief Bushing
4	21447003	Screw - Self Tapping (5)
5	39454065	Handle Grip - ABU
6	47831007	Diode Assem.
7	31744023	Tubing - JM
8	27479307	Lead Wire Tie
9	12227	Insulated Terminal
10	46143064	Lead Wire
11	37258082	Terminal Shield
12	28179105	Switch
13	21631302	Handle Bolt - AW/AY (2)
14	37226080	Handle Cover - ABU
15	12227	Insulated Terminal
16	32277021	Handle Nut - AW/AY (2)
17	37225016	Bag Cap - Outer - ABE
18	38781012	Gasket
19	37225010	Bag Cap - Inner - HE
20	38315014	Spring - Compression
21	32458006	Handle Tube - Upper
22	46513006	Motor Lead Wire Assem.
23	43662033	Bag Assem.
24	21447218	Screw
25	36171046	Clamp Band - ABE
26	42223177	Bag Support Assem. - MB (Incl. Items 24,25,27)
27	34123036	Gasket
28	32355014	Handle Tube - Lower - ABU
29	21434287	Screw - Self Tapping - FW (8)
30	21329104	Washer - Fiber
31	37196103	Motor Cover - AG

Ref. No.	Part No.	Description
32	39466024	Carrying Handle - ABR
33	38775044	Dirt Cup
34	21264022	Plastic Rivet
35	38562023	CAM - AG
36	38452090	Lever - ABN
37	46143065	Lead Wire
38	47318022	Motor Brush & Spring Assem. (2)
39	34152010	Insulator (2)
40	42196005	Motor Brush Housing Assem.
41	45317036	Field Assem. Comp.
42	21338030	Lockwasher (2)
43	21479438	Screw (2)
44	44731073	Armature Assem. Comp.
45	21378012	C-Clip
46	21378013	C-Clip Retainer
47	37193019	Motor Housing - MB
48	43265006	Bearing Plate Assem.
49	21447218	Screw - Self Tapping (4)
50	31146008	Spacer
51	38755018	Fan - HE
52	37196119	Fan Cover - MB

ITEMS NOT ILLUSTRATED

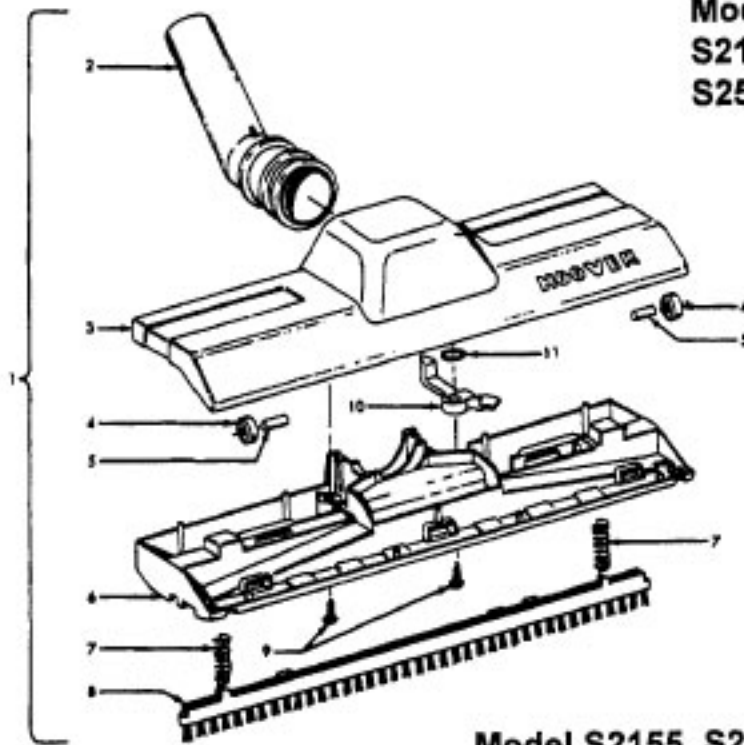
43414180 Rug & Floor Nozzle - Dix. (P - 64)

PACKAGING MATERIAL

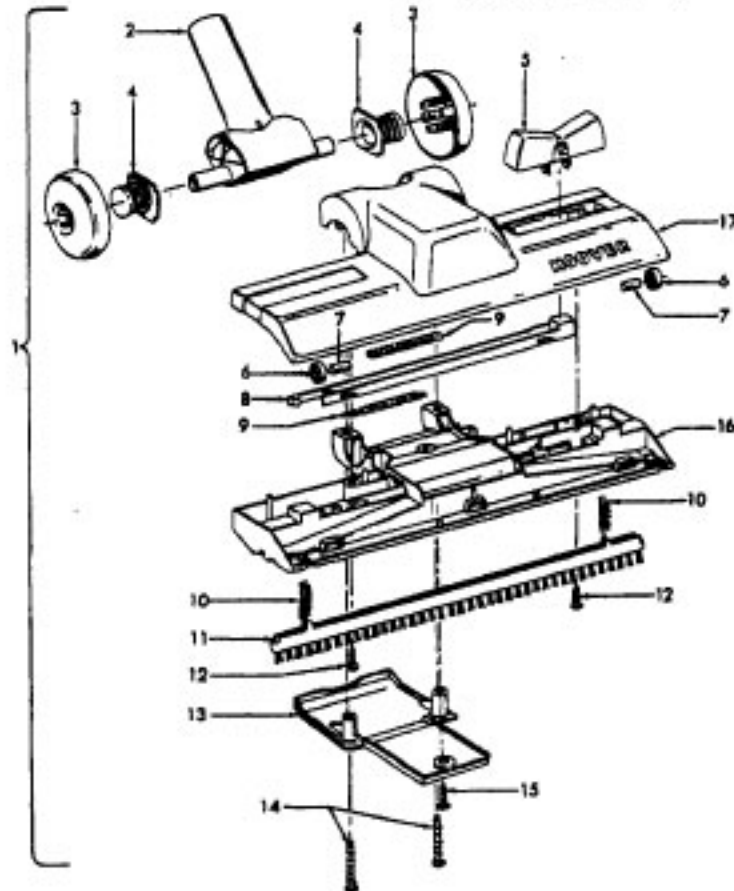
58132074 Carton
 58222001 Nozzle Support
 58353011 Cleaner Support
 56512127 Owner Manual

Rug & Floor Nozzle

Models S2141, S2147,
S2139-080, S2149, S2515,
S2541, S2551



Model S2155, S2543, S2545, S2561, S2571



Rug & Floor Nozzle

Models S2141, S2147, S2139-080, S2149, S2515, S2541, S2541-040, S2551

Ref. No.	Part No.	Description
1	Not Available	Standard Rug & Floor Nozzle - ABE(Use Dlx. 43414180)
2	38646078	Nozzle Tube - ABE
3	38615182	Rug & Floor Nozzle - ABE
4	38521018	Roller (2)
5	31511004	Roller Axle-AY (2)
6	36414018	Brush Housing - MV
7	166649FW	Spring (2)
8	48443003	Brush Back Assem. - AG
9	21447203	Screw - Self Tapping (2)
10	38454004	Brush Back Lever - MV

Models S2155, S2543, S2545, S2561, S2571

Ref. No.	Part No.	Description
1	43414180	Deluxe Rug & Floor Nozzle Assem. - ABE
	43414182	Deluxe Rug & Floor Nozzle Assem. - ADJ - S2571
2	38646071	Nozzle Connector - ABE
	38646082	Nozzle Connector - AG - S2571
3	43244043	Wheel & Bearing Assem. (2) - ABR
4		Included w/Item 3
5	38434019	Pedal - ABN
	38434022	Pedal - AG - S2571
6	38521018	Roller (2)
7	31511004	Roller Axle - AY (2)
8	38451008	Slider - AG
9	34122013	Seal (2)
10	166649FW	Spring (2)
11	48443004	Brush Back Assem. - AG
12	21447203	Screw - Self Tapping (2)
13	36434005	Skid Plate - ABR
	36434006	Skid Plate - AG - S2571
14	21447020	Screw - Self Tapping (2)
15	21447203	Screw - Self Tapping
16	36414019	Brush Housing - ABR
	36414023	Brush Housing - AG - S2571
17	43414157	Rug & Floor Nozzle - ABE
	43414185	Rug & Floor Nozzle - ADJ - S2571