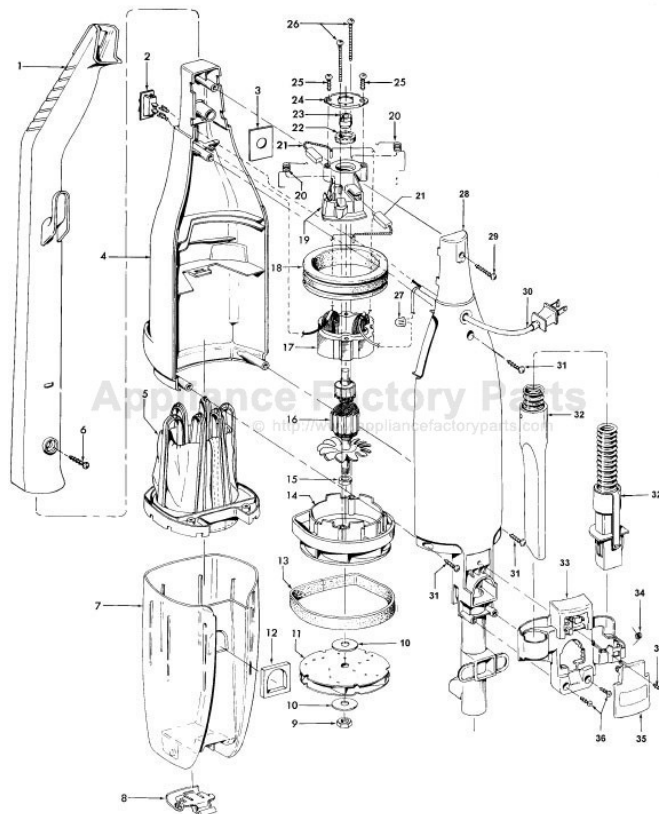


This Owner's Manual is provided and hosted by [Appliance Factory Parts](http://ApplianceFactoryParts.com).



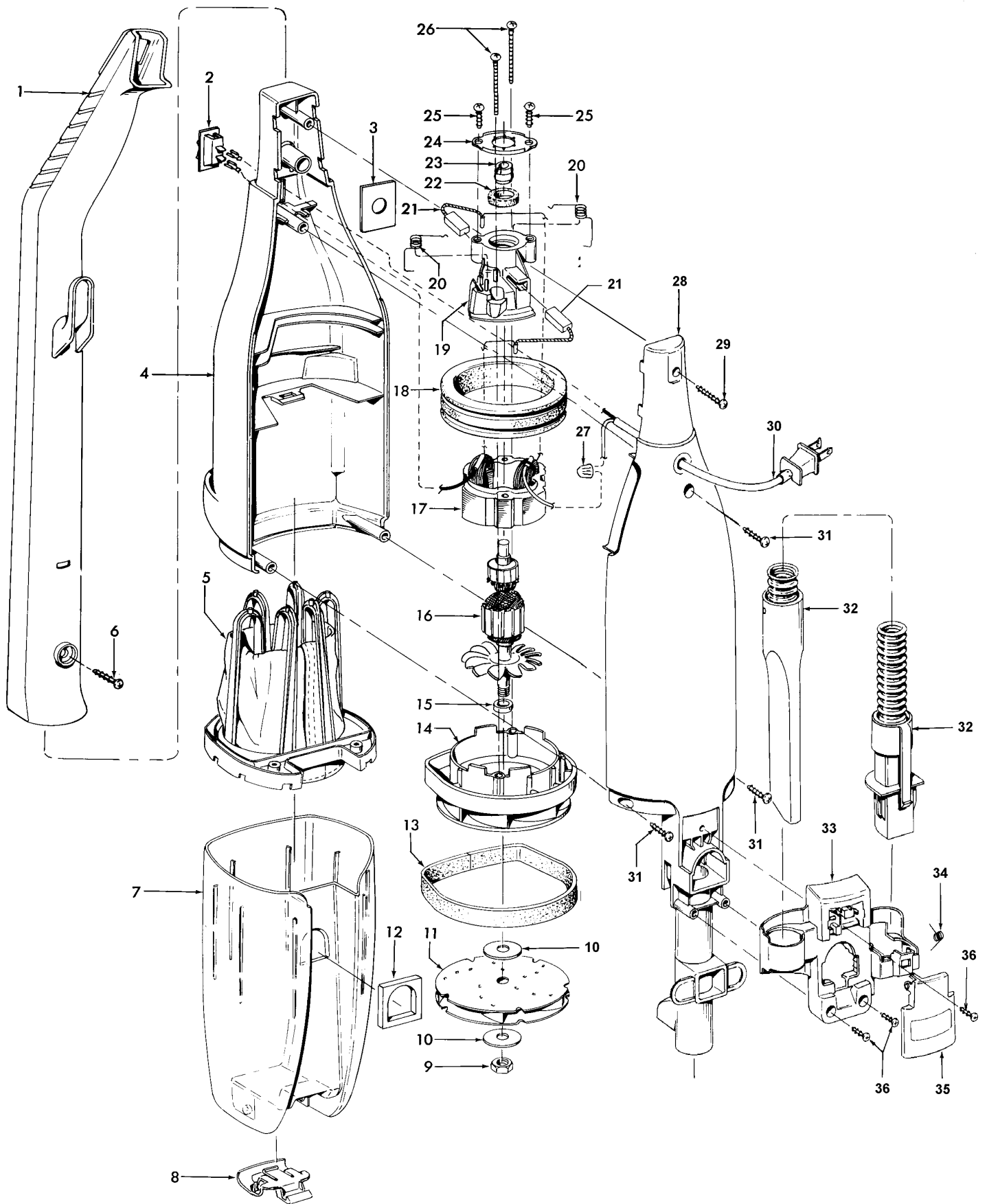
HOOVER S2535 Owner's Manual

[Shop genuine replacement parts for HOOVER S2535](#)



[Find Your HOOVER Vacuum Cleaner Parts - Select From 1455 Models](#)

----- Manual continues below -----



Tempo Model S2541, S2541-040

1	39454061		Handle
2	28161063		Switch
3	34144009		Insulator
4	37222003		Front Housing - AAY - S2531
	37222005		Front Housing - ABM -S2541, S2541-040
	27222028		Front Housing - MU - S2543
	37222029		Front Housing - MR - S2545
	37222009		Front Housing - ACL - S2535
5	43615073		Filter Assembly - early models without post
	43615087		Filter Assembly - with post - Cyclonic style (see illustration below)
6	21447236	*	Screw
7	43645046	+	Dirt Cup - AAN - used with filter assembly without post (See Note)
	43645047		Dirt Cup - w/ Slot - (Incl. It. 8) used with filter assembly with post (see illustration below)
8	36153004		Latch - AG
9	21642021		Nut
10	21312818	+	Washer
11	43566019	+	Fan Assembly
12	38783022	+	Seal
13	34123048		Motor Support Seal
14	42193024		Motor Housing Assembly
15	31148011		Spacer
16	44731085		Armature Assembly
17	45312047		Field Assembly (incl. it. 21)
18	31195005		Motor Mount Insulator
19	37193026		Motor Brush Housing
20	38353014		Spring (2)
21	47313010		Motor Brush Assembly (Includes two brushes and two crimps)
22	21329108	*	Washer
23	24118214		Motor Bearing
24	36134006	+	Bearing Retainer
25	214793DA	*	Screw (2)
26	21479443	*	Screw (2)
27	27618508	*	Wire connector
28	37222014		Rear Housing - ABE (incl. it. 12)
29	21447236	*	Screw
30	46363110		Attachment Cord
31	21447072	*	Screw
32	43491014		Hose Assembly
33	36433119		Tool Holder - ABE
34	38351018		Spring
35	37227002		Air Intake Door - ABE
36	21447124	+*	Screw (3)
Items Not Illustrated			
	38765021		Secondary filter
	39442045		hose wrap (upper Handle)
	43414036		Rug and Floor Nozzle - S2531, S2535
	43414161	+	Rug and Floor Nozzle - S2541 (Use 43414180)
	43414180		Rug & Floor Nozzle - S2541, S2541-040, S2543, S2545
	43414189		Hard Floor Brush
packaging material			
	56512176		Owner Manual
	58134035	+	Carton
	58364018	+	Cleaner Support□
	58242008	+	Nozzle Support
Note: When replacing early style Dirt Cup (43645046) with the late style Dirt Cup (43645047) you must also update the filter with the late style filter with post			

1	not avail.		Standard Rug & Floor Nozzle Assem. (Use Deluxe 43414180)
2	38646078		Nozzle Tube - AG
3	38615182		Rug & Floor Nozzle - ABE
4	38521018		Roller (2)
5	31511004		Roller Axle-AY (2)
6	36414018		Brush Housing - MV
7	166649FW		Spring (2)
8	48443004		Brush Back Assem. - AG
9	21447203	*	Screw - Self Tapping (2)
10	38454004	+	Brush Back Lever - MV

			Models S2155, S2543, S2545, S2561, S2571
1	43414180		Deluxe Rug & Floor Nozzle Assem. - AG
	43414182		Deluxe Rug & Floor Nozzle Assem. - ADJ - S2571
2	38646082		Nozzle Connector - AG
	38646082		Nozzle Connector - AG - S2571
3	43244043		Wheel & Bearing Assem. (2) - ABR
4			Included w/Item 3
5	38434019	+	Pedal - ABN
	38434022		Pedal - AG - S2571
6	38521018		Roller (2)
7	31511004		Roller Axle - AY (2)
8	38451008		Slider - AG
9	34122013	+	Seal (2)
10	166649FW		Spring (2)
11	48443004		Brush Back Assem. - AG
12	21447203	*	Screw - Self Tapping (2)
13	36434005		Skid Plate - ABR
	36434006		Skid Plate - AG - S2571
14	21447020	*	Screw - Self Tapping (2)
15	21447203	*	Screw - Self Tapping
16	36414019		Brush Housing - ABR
	36414023		Brush Housing - AG - S2571
17	43414157		Rug & Floor Nozzle - ABE
	43414185		Rug & Floor Nozzle - ADJ - S2571

