

Dimension Cleaner

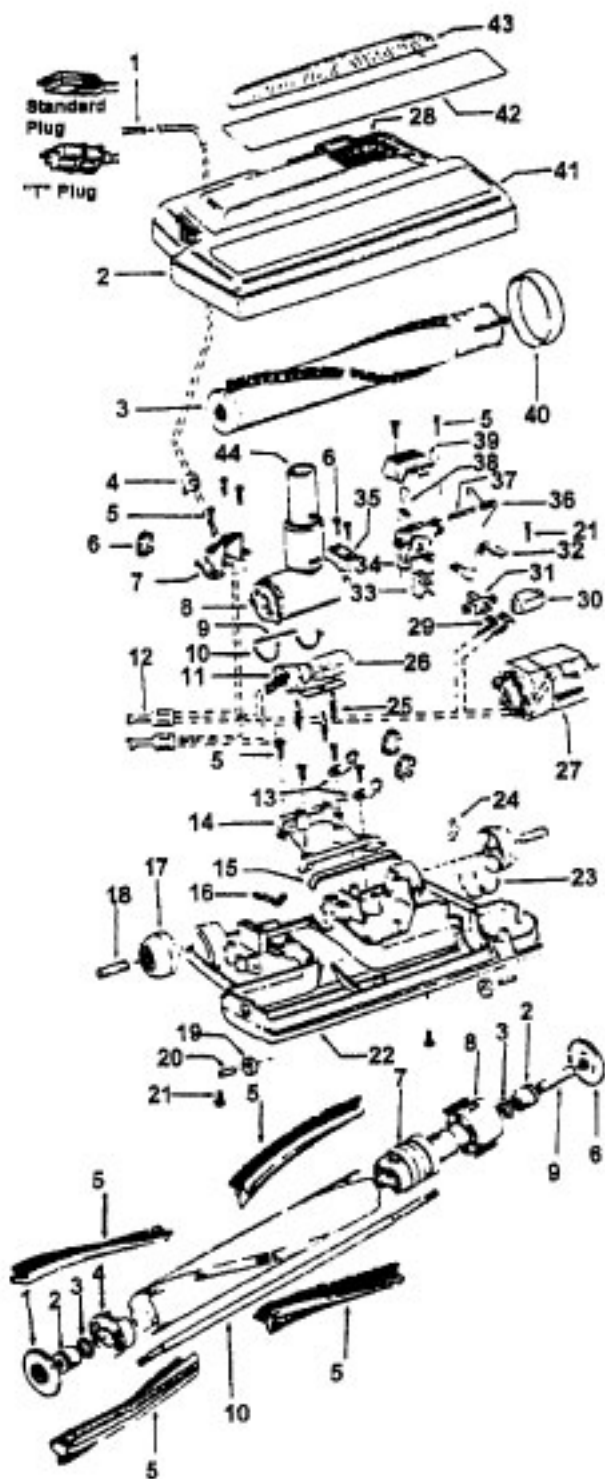
Model S3277, S3277-040, S3445, S3623

| Ref. No. | Part No. | Description |
|----------|----------|--|
| 1 | 38434003 | Switch Pedal - AG |
| 2 | 51375086 | Nameplate - S3277, S3277-040 |
| | 51375111 | Nameplate - S3445 |
| | 51371023 | Nameplate - S3623 |
| 3 | 37214110 | Control Panel - MS |
| | 37214075 | Control Panel - MY |
| | 37214161 | Control Panel - AG |
| 4 | 38434008 | Cord Pedal - AG |
| 5 | 39383095 | Lens |
| 6 | 27343213 | Bag Indicator |
| 7 | 36131052 | Retainer Clip |
| 8 | 160508 | Screw |
| 9 | 37221024 | Rear Deck - MP - S3277, S3277-040 |
| | 37221023 | Rear Deck - ML - S3445 |
| | 37221029 | Rear Deck - ABB - S3623 |
| 10 | 38313021 | Spring |
| 11 | 18972 | Terminal-insulated |
| 12 | 21447003 | Screw |
| 13 | 36924005 | Brush Block Bracket |
| 14 | 47342008 | Brush Block |
| 15 | 31725018 | Vent Tube |
| 16 | 38356006 | Spring |
| 17 | 36222008 | Brake Pad |
| 18 | 34132014 | Foam Pad |
| 19 | 36131017 | Retainer |
| 20 | 38458012 | Brake Arm |
| 21 | 37926006 | Plug Housing - MS - S3277, 3277-040 |
| | 37926005 | Plug Housing - MY - S3445 |
| | 37926009 | Plug Housing - AG - S3623 |
| 22 | 34132008 | Seal |
| 23 | 46831025 | Cord Reel |
| 24 | 42224005 | Rear Panel & Seals - AG -S3277, S3277-040, S3623 |
| | 42224001 | Rear Panel & Seals - MY - S3445 |
| 25 | 46383308 | Cord - AG - 23 |
| 26 | 34123025 | Seal |
| 27 | 35253004 | Ferrule |
| 28 | 167679 | Carbon Brush |
| 29 | 28382111 | Hi-Limit Thermostat |
| 30 | 43578037 | Motor - (P - 192) |
| | 43578082 | Motor - (P - 192) |
| 31 | 27479307 | Wire Tie |
| 32 | 37196110 | Motor Cap |
| 33 | 21447072 | Screw |
| 34 | 34214002 | Seal-LH |
| 35 | 34172026 | Seal |
| 36 | 34214001 | Seal-RH |
| 37 | 43244021 | Inside Wheel |
| 38 | 32811003 | Outside Wheel - MR |
| | 32811012 | Outside Wheel - AG |
| | 32811013 | Outside Wheel - ABB |
| 39 | 38522050 | Tire - MS - S3277, S3277-040 |
| | 38522053 | Tire - S3445, S3623 |
| 40 | 21447121 | Screw |
| 41 | 37212138 | Lower Case - AG -S3277, S3277-040 |
| | 37212133 | Lower Case & Seal - MX - S3445 |
| | 37212139 | Lower Case & Seal - ABB - S3623 |
| 42 | 38784013 | Seal |
| 43 | 43244025 | Caster Wheel |
| 44 | | Tape |
| 45 | 32271003 | Tube Adapter |
| 46 | 36235035 | Furniture Guard- RH- MS- S3277, S3277-040 |
| | 36235023 | Furniture Guard - RH - MY - S3445 |
| | 36235075 | Furniture Guard - RH - AG - S3623 |
| 47 | 38784015 | Seal |
| 48 | 21328071 | Washer |
| 49 | 38313017 | Spring |
| 50 | 36152005 | Slide Latch |
| 51 | 37218018 | Hose Module- MR- S3277, S3277-040, S3623 |
| | 37218017 | Hose Module - MX - S3445 |
| 52 | 38421011 | Slide Button |

| Ref. No. | Part No. | Description |
|---|----------|---|
| 53 | 46325018 | Receptacle - 2W |
| 54 | 36171009 | Clamp |
| 55 | 21447203 | Screw |
| 56 | 37215111 | Main Frame - AG |
| 57 | 38784017 | Seal |
| 58 | 32282008 | Tube Adapter |
| 59 | 38765006 | Filter |
| 60 | 36434105 | Back Support |
| 61 | 37944004 | Filter Retainer |
| 62 | 36425032 | Bag Collar Support |
| 63 | 38351006 | Spring |
| 64 | 36153026 | Bag Latch |
| 65 | 4010037M | Paper Bag - 3 Pk. |
| 66 | 36235025 | Furniture Guard- LH- MS- S3277, S3277-040 |
| | 36235024 | Furniture Guard - LH - MY - S3445 |
| | 36235074 | Furniture Guard - LH - AG - S3623 |
| 67 | 31526003 | Seal |
| 68 | 21447017 | Screw |
| 69 | 21378157 | Spring Clip |
| 70 | 42217106 | Bag Lid - AG - S3277, S3277-040, S3445 |
| | 42217137 | Bag Lid - ABB - S3623 |
| 71 | 36152009 | Latch - MP - S3277, S3277-040 |
| | 36152013 | Latch - S3445 |
| | 36152014 | Latch - ABB - S3623 |
| 72 | 38313017 | Spring |
| 73 | 38411053 | Pop-Up Button |
| 74 | 36131048 | Latch Retainer |
| 75 | 31727025 | Vent Tube-indicator |
| 76 | 47511030 | Switch |
| 77 | 36433024 | Tool Lid - AAL (Clear) |
| 78 | 21447003 | Screw |
| 79 | 31178027 | Seal |
| 80 | 21447003 | Screw |
| | 56513207 | Owner Manual |
| | 56513315 | Owner Manual - S3623 |
| | 58185120 | Carton - S3277, S3277-040 |
| | 58185124 | Carton - S3445 |
| | 58185150 | Carton - S3623 |
| | 58461024 | Rear Support |
| | 58461025 | Front Support |
| | 58216010 | Bottom Pad |
| | 58333010 | Mid Pad |
| | 58369022 | Bottom Support |
| CLEANING TOOLS - S3277, S3277-040, S3623 - (P- 150) | | |
| | 38617017 | Crevice Tool - AG |
| | 43414057 | Furniture Nozzle - AG |
| | 43414064 | Dusting Brush - AG |
| | 43414073 | Floor Brush - AG |
| | 43433080 | Hose- 2W |
| | 43453052 | Extension Tube-AX-20 |
| | 48438044 | Power Nozzle (P. 145) |
| | 48438126 | Power Nozzle -ABB- S3623 - (P - 145) |
| CLEANING TOOLS - S3445 - (P. 150) | | |
| | 38617017 | Crevice Tool - AG |
| | 43414057 | Furniture Nozzle - AG |
| | 43414064 | Dusting Brush - AG |
| | 43414073 | Floor Brush - AG |
| | 43433080 | Hose- 2W- MX (P - 148) |
| | 43453052 | Extension Tube - 20 -AX |
| | 48438044 | Power Nozzle (P - 145) |
| ITEMS NOT ILLUSTRATED | | |
| | 46831076 | Brush Block (Cord Reel) |

Power Nozzle 48438112 + (Use 48438044)
 48438124 - ABB, 48438126 - ABB
 48438226 - AG T - Plug,
 48438044 - AG - Standard Plug

Model S3277, S3277-040, S3279,
 S3491, S3493, S3623, S3625

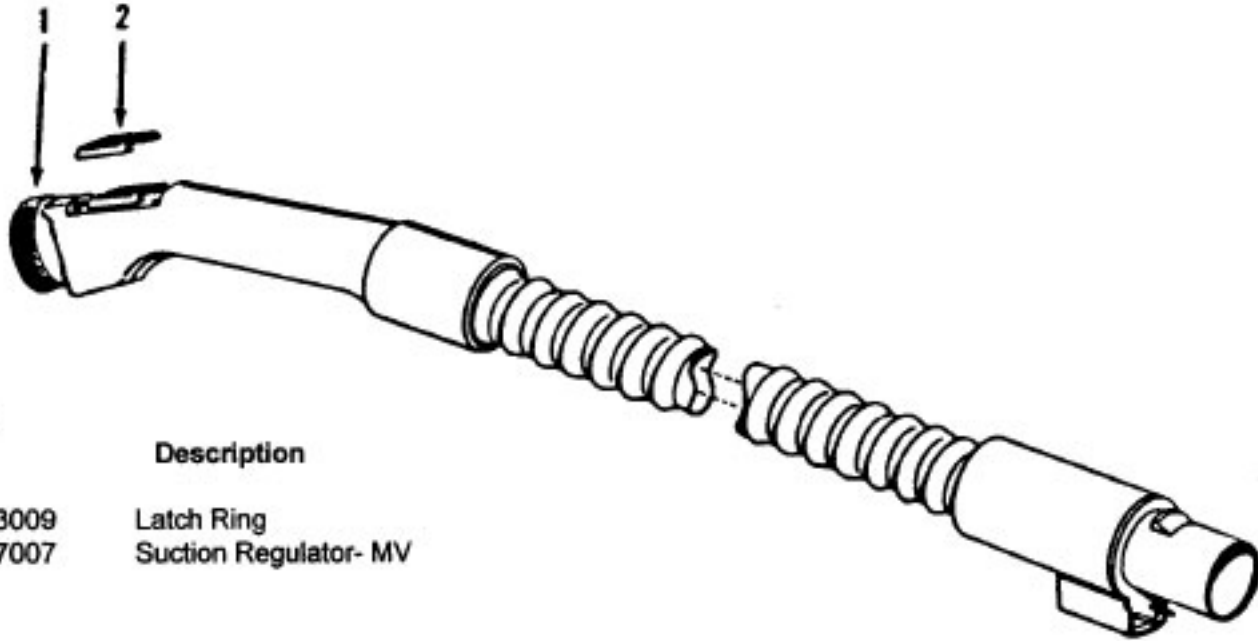


Agitator 48416030

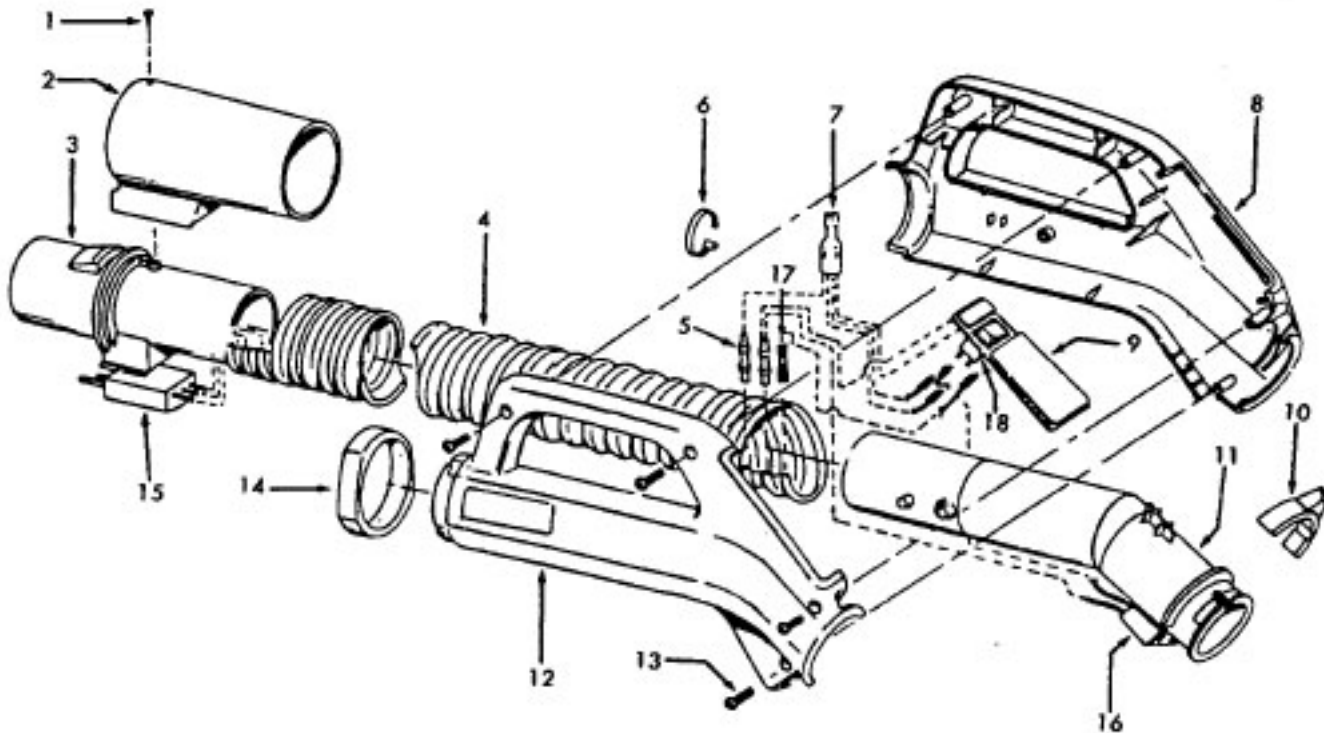
| | | |
|----|----------|----------------|
| 1 | 48495AY | Bearing |
| 2 | 43267002 | Bearing |
| 3 | 21347003 | Washer |
| 4 | 36422001 | End |
| 5 | 48445017 | Agitator Brush |
| 6 | 41435018 | Thread Guard |
| 7 | 38537008 | End Pulley |
| 8 | 48418001 | Brush Ring |
| 9 | 31722019 | Spacer |
| 10 | 32724005 | Shaft |

| Ref. No. | Part No. | Description |
|----------|----------|--|
| 1 | 46321088 | Cord - AG - Standard Plug |
| | 46321009 | Cord - S3625 |
| 2 | 36231103 | Furniture Guard - MS - S3277, S3277-040, S3279 |
| | 36231096 | Furniture Guard - MY |
| 3 | 48416030 | Agitator - 4B |
| 4 | 163768 | Strain Relief |
| 5 | 21447041 | Screw |
| 6 | 27479307 | Wire Tie |
| 7 | 36131044 | Retainer Housing - MP |
| | 36131067 | Retainer Housing - AG - S3491, S3493, S3623, S3625 |
| 8 | 43461021 | Nozzle Connector - AG (Incl. Item 44) |
| 9 | 34112005 | Seal |
| 10 | 34337003 | Seal |
| 11 | 47171009 | Lamp Socket |
| 12 | 18972 | Insulated Terminal (3 Wire) |
| 13 | 45517 | Wire Holder |
| 14 | 42256098 | Dust Cover |
| 15 | 34123017 | Seal |
| 16 | 35276001 | Detent Spring |
| 17 | 32175025 | Wheel - AG |
| 18 | 31523005 | Wheel Shaft |
| 19 | 32761001 | Wheel |
| 20 | 31522004 | Wheel Shaft |
| 21 | 21447007 | Screw |
| 22 | 42246121 | Base Plate Assm. (incl. Items 17,18,19,20,23,24) |
| 23 | 34337004 | Lower Seal |
| 24 | 13261AY | Rib Shoe |
| 25 | 36218005 | Grommet |
| 26 | 27317307 | Lamp - 15 |
| 27 | 43177073 | Motor |
| 28 | 51865002 | Indicator Lens |
| | 51865018 | Indicator Lens |
| 29 | 27666702 | Terminal |
| 30 | 37258082 | Shield |
| 31 | 281770KD | Switch |
| 32 | 51151053 | Indicator - PH |
| 33 | 34361001 | Switch Actuator |
| 34 | 42262032 | Housing |
| 35 | 36131017 | Retainer |
| 36 | 38353007 | Torsion Spring |
| 37 | 31523006 | Pivot Pin |
| 38 | 38458002 | Depressor |
| 39 | 38433054 | Switch Pedal - MR |
| | 38433067 | Switch Pedal - MW - S3491, S3493, S3623, S3625 |
| 40 | 38528011 | Belt |
| 41 | 42252189 | Nozzle Body-AG - (Incl. Items 2,43) |
| 42 | 52125092 | Nameplate - S3277, S3279 |
| | 52125114 | Nameplate - S3277-040, S3491, 4393 |
| | 52125133 | Nameplate - S3623, S3625 |
| 43 | 39383060 | Lens |
| 44 | 43457037 | Swivel Tube - AG |

Dimension Hose
43433087 + Hose - 2W - AAP 7-1/2'
43433080 Hose - 2W - AAB 6'

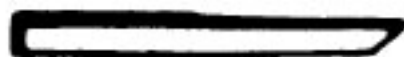


| Ref. No. | Part No. | Description |
|----------|----------|-----------------------|
| 1 | 36153009 | Latch Ring |
| | 34777007 | Suction Regulator- MV |



| Ref. No. | Part No. | Description | Ref. No. | Part No. | Description |
|----------|----------|--|----------|----------|--|
| | 43433025 | Hose - 3W - MV | 10 | 36153029 | Latch Ring |
| | 43433082 | Hose - 3W - MV | 11 | 38646034 | Inner Tube |
| 1 | 21124102 | Drive Screw | 12 | 48663161 | Grip - RH - MV |
| 2 | 38634067 | Grip - MV | | 39461007 | Grip - RH - MV - (43433025) |
| 3 | 38638030 | Hose Connector | 13 | 21447124 | Screw |
| 4 | 43431014 | Hose - 3W | 14 | 36131087 | Retainer Ring |
| 5 | 31712006 | Insulating Sleeve | 15 | 46521008 | Plug - 3 Pin |
| 6 | 27479307 | Wire Tie | 16 | 46325024 | Connector Repair Kit - (43433082 Only) |
| 7 | 12227 | Insulated Terminal | 17 | 27613003 | Wire Slice |
| 8 | 48663161 | Grip - LH - MV | 18 | 28161051 | Switch |
| | 39461008 | Grip - LH - MV - (43433025) | | | |
| 9 | 47551025 | Grip Control Panel - AG (incl. Items 6, 7, 17) | | | |

Cleaning Tools - Dimension



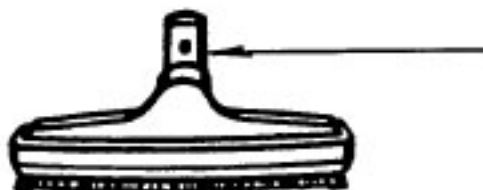
38617017 Crevice Tool - AG



43414057 Furniture Nozzle - AG



43414064 Dusting Brush - AG

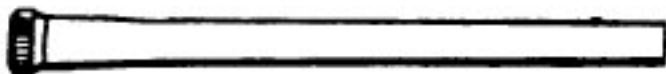


38644020 Swivel Connector

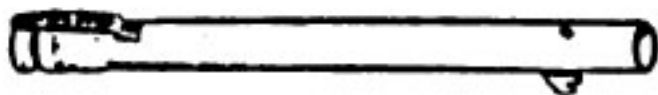
43414073 Floor Brush - AG



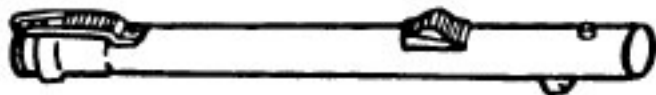
48447001 + Brush Back



3863801P Extension Tube - AG



43453058 + Ext. Tube - BL - 20
43453052 Ext. Tube - AX - 20



43453023 Ext. Tube - AX - 20 w/c