

| Ref. No. | Part No. | Description |
|----------|----------|-------------------------|
| 1 | 21447041 | Screw |
| 2 | 37195041 | Motor Cover - MX |
| 3 | 34163003 | Diffuser |
| 4 | 21366004 | Speed Nut |
| 5 | 34133007 | Seal |
| 6 | 34132006 | Pad |
| 7 | 34143002 | Seal |
| 8 | 43577011 | Motor - 2.2 |
| 9 | 48969 | Wire Nut |
| 10 | 46363039 | Attach. Cord - AAP - 16 |
| 11 | 27482301 | Strain Relief |
| 12 | 38511015 | Wheel Bearing - AG |
| 13 | 38522061 | Wheel - AG |
| 15 | 41432040 | Wheel Carrier |
| 16 | 46326079 | Receptacle Assem. - AG |
| 17 | 37223196 | Main Body - AAK |
| 18 | 36151015 | Latch |
| 19 | 31114009 | Filter |
| 20 | 36426012 | Bulkhead |
| 21 | 36321011 | Motor Retainer |
| 22 | 21447072 | Screw |
| 23 | 34287021 | Foam Muffler |
| 24 | 28164276 | Switch |
| 25 | 37214052 | Control Panel - M |
| 29 | 38781010 | Lid Seal |
| 30 | 42212074 | Bag Housing Lid - AAR |
| 31 | 52125111 | Nameplate |
| 32 | 4010028K | Paper Bag - 3 Pk. |
| 36 | 36433063 | Tool Rack - AAR |
| 37 | 21447003 | Screw |
| | 56513248 | Owner Manual |
| | 58173337 | Carton |
| | 58366069 | Mid Pad |
| | 58461023 | Top Support |

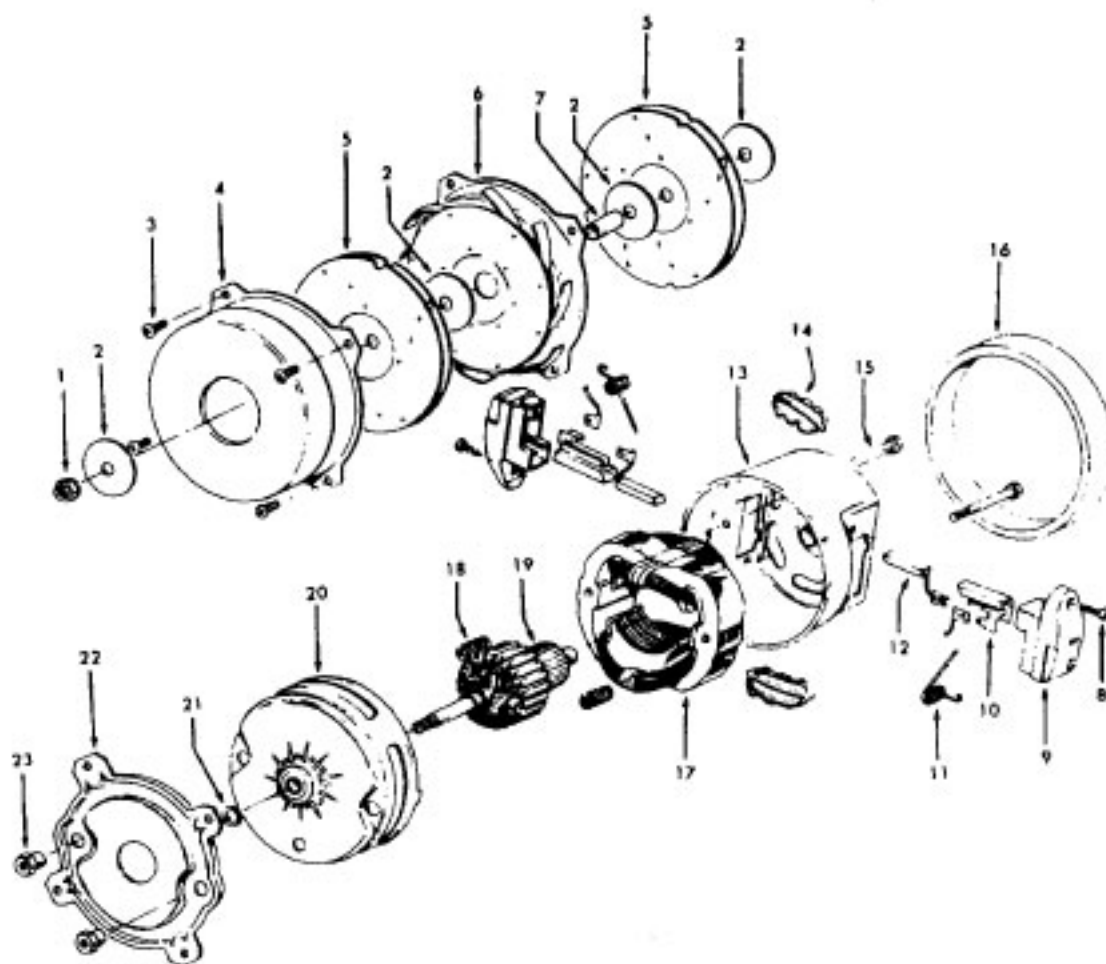
CLEANING TOOLS - (P-92)

| | |
|----------|----------------------------|
| 36172584 | Cord /Wand Clip |
| 38614024 | Furniture Nozzle - AG |
| 38617017 | Crevice Tool - AG |
| 43414064 | Dusting Brush - AG |
| 43433111 | Hose - 2W - AG |
| 3863801P | Extension Tube - Poly - AG |
| 48438190 | Power Nozzle - LZ (P-173) |

CLEANING TOOLS - S3439-070 - (P-92)

| | |
|----------|------------------------------|
| 43414057 | Furniture Nozzle - AG |
| 38617017 | Crevice Tool - AG |
| 43414064 | Dusting Brush - AG |
| 43414073 | Floor Brush - AG |
| 43433111 | Hose - 2W - AG |
| 43453052 | Extension Tube - 20 - AX |
| 48438190 | Power Nozzle - LZ - (P-1 73) |

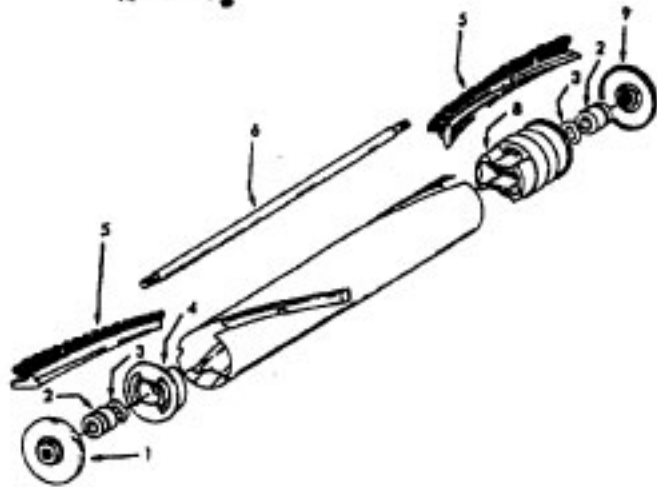
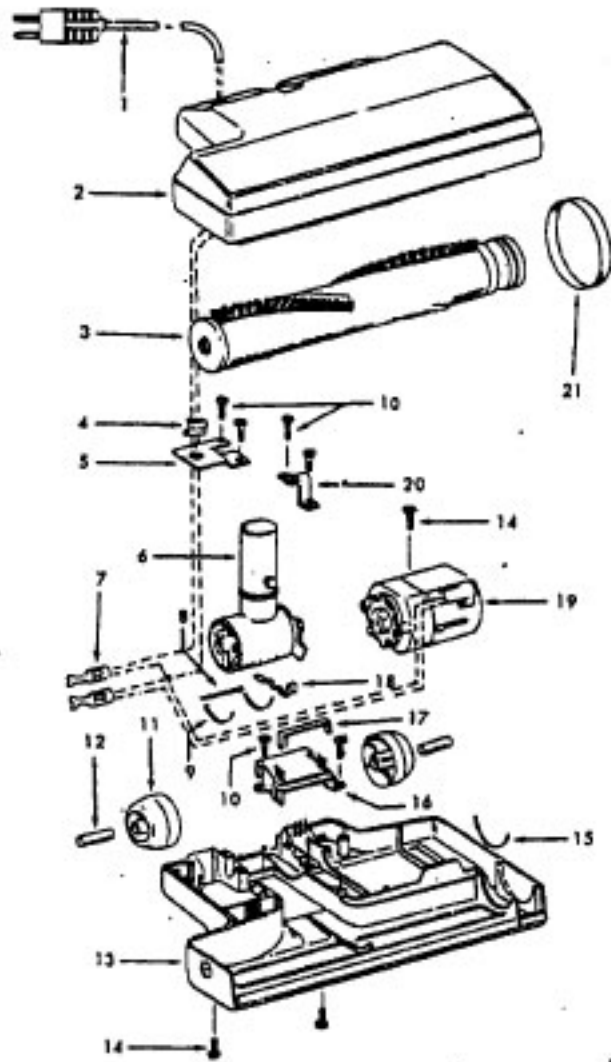
**Motor - 43577112 +
43577008 +**



| Ref. No. | Part No. | Description |
|----------|----------|---|
| 1 | 33426001 | Nut |
| 2 | 21312701 | Washer |
| 3 | 21434224 | Screw |
| 4 | 37191016 | Outerstage Housing |
| 5 | 43566017 | Fan |
| 6 | 43551005 | Interstage |
| 7 | 31742010 | Spacer |
| 8 | 21429406 | Screw |
| 9 | 167696AG | Brush Carrier |
| 10 | N/A | Brush Holder - Use Brush Carrier Assem. 47318008 (Incl. It. 9 - 12) |
| 11 | 38353004 | Spring |
| 12 | 167681 | Carbon Brush |
| 13 | 42937003 | Motor Housing - Upper |
| 14 | 169702BZ | Bushing |
| 15 | 33421004 | Bolt |
| 16 | 31195002 | Air Baffle |
| 17 | 45311051 | Field Coil - 1" Stack Height |
| | 45312037 | Field Coil - 3/4" Stack Height |
| 18 | 167721FW | Compression Spring |
| 19 | 44765171 | Armature - 1" Stack Height |
| | 44765217 | Armature - 3/4" Stack Height |
| 20 | 37191085 | Motor Housing - Lower |
| 21 | 31148002 | Spacer |
| 22 | 36322002 | Mounting Plate |
| 23 | 167695EF | Nut |

Power Nozzle - 48438190 - LZ

Models S3433, S3435, S3439, S3439-070, S3441, S3441-031, S3441-070, S3443, S3483, S3503, S3505



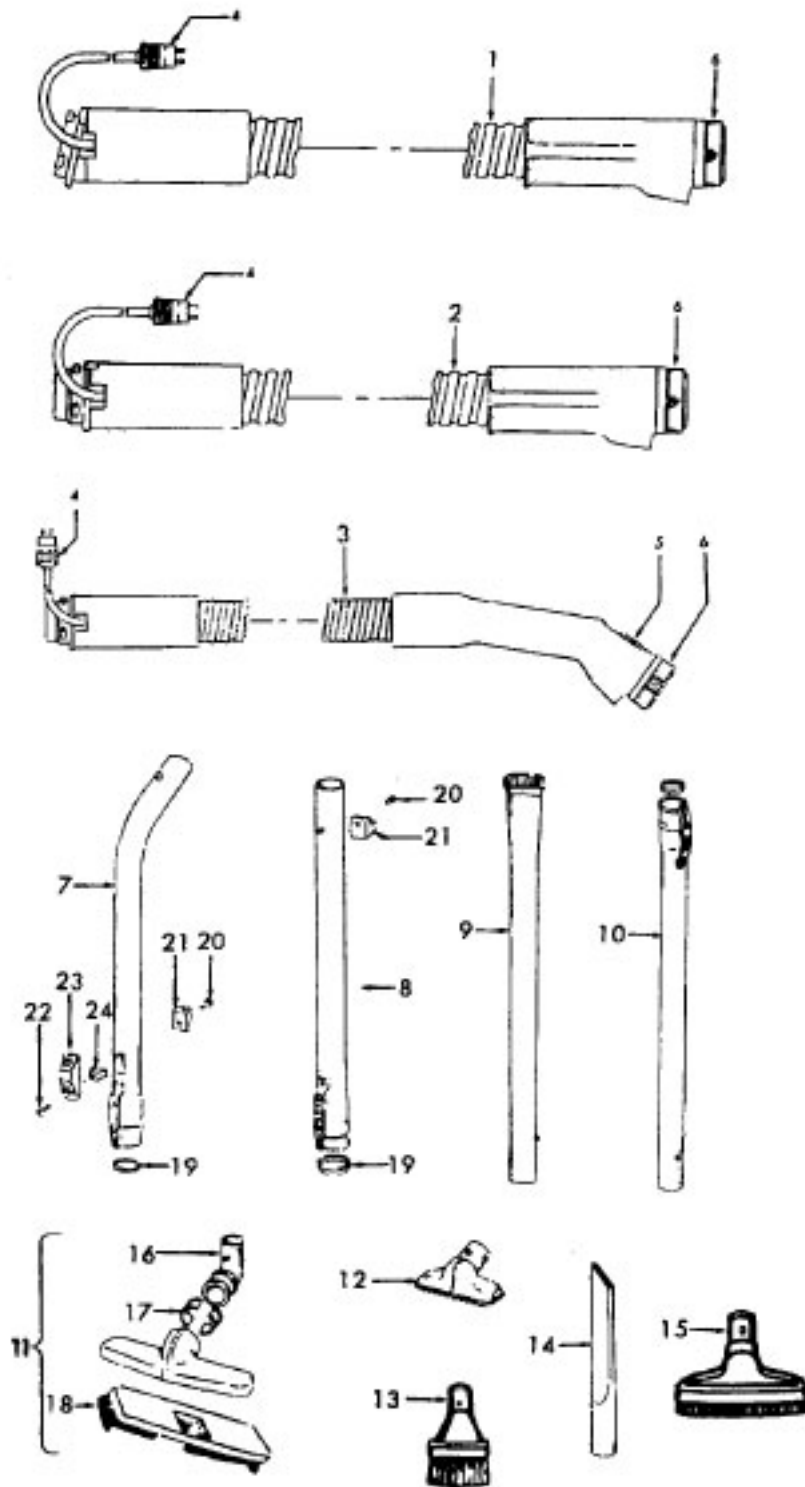
| Ref. No. | Part No. | Description |
|----------|----------|----------------------------------|
| 1 | 46321088 | Cord - AG - Standard Plug |
| 2 | 42252174 | Nozzle Body |
| 3 | 48416009 | Agitator - 4B |
| 4 | 163768 | Strain Relief |
| 5 | 34663003 | Bracket - RH |
| 6 | 43482024 | Nozzle Connector - LZ |
| 7 | 12227 | Insulated Terminal (2 Wire) |
| | 48969 | Wire Nut (2 Wire) |
| 8 | 34112005 | Seal |
| 9 | 34337003 | Seal |
| 10 | 21447041 | Screw |
| 11 | 32175025 | Wheel - AG |
| 12 | 31523005 | Wheel Shaft |
| 13 | 42246120 | Bottom Plate (Incl. Items 11,12) |
| 14 | 21447007 | Screw |
| 15 | 34337004 | Lower Seal |
| 16 | 42256090 | Duct Cover |
| 17 | 34123015 | Seal |
| 18 | 35276001 | Detent Spring |
| 19 | 43177073 | Motor |
| 20 | 35271001 | Bracket - LH |
| 21 | 38528011 | Belt |

Agitator - 4B 48416009

| | | |
|---|----------|----------------|
| 1 | 41435018 | Thread Guard |
| 2 | 43267002 | Bearing |
| 3 | 21347003 | Washer |
| 4 | 36422001 | End |
| 5 | 48445017 | Agitator Brush |
| 6 | 160070 | Shaft |
| 8 | 38537002 | End Pulley |
| 9 | 41435021 | Thread Guard |

Cleaning Tools

Spirit & Celebrity



| Ref. No. | Part No. | Description |
|----------|----------|--------------------------------------|
| 1 | 43433085 | Hose - AAP - Celebrity |
| 2 | 43433032 | Hose - JM - Spirit - 5-1/2' |
| 3 | 43433067 | Hose - AAP - Spirit - 5-1/2' |
| | 43433081 | Hose - MV -S/C- Spirit - 5-1/2' |
| | 43433084 | Hose - AAP - S/C - Spirit - 7' |
| | 43433111 | Hose - 2W - AG -S/C - Spirit |
| 4 | 46321076 | Cord Repair Kit |
| 5 | 34777005 | Suction Reg. Control - AG |
| | 34777007 | Suction Reg. Control - MV |
| 6 | 36153009 | Latch Ring - AG |
| 7 | 43468055 | Hose Tube - BL - 14 |
| 8 | 43453086 | Extension Tube - BL - 22 |
| | 43453035 | Extension Tube - AX - 22 |
| | 43453052 | Extension Tube - 20 - AX (Gray Clip) |
| | 43453058 | Extension Tube - BL - 20 (Gray Clip) |
| 9 | 3863801P | Extension Tube -Poly - AG |
| 10 | 43453027 | Extension Tube |
| 11 | 43414073 | Floor Brush - AG |
| 12 | 38614023 | Furniture Nozzle - 1 Pc. - 17 |
| | 43414057 | Furniture Nozzle - AG |
| | 38614024 | Furniture Nozzle - AG |
| 13 | 43414064 | Dusting Brush - AG |
| 14 | 38617017 | Crevice Tool - AG |
| 15 | 43414015 | Furniture Brush - JM |
| | 43414016 | Furniture Brush - AG |
| 16 | 38644040 | Swivel Connector - JM |
| | 38644020 | Swivel Connector - AG |
| 17 | 33712007 | Split Ring |
| 18 | 48447001 | Brush Back |
| 19 | 12845JM | Gasket |
| 20 | 12783 | Rivet |
| 21 | 36171008 | Cord Clip - MV |
| | 36171005 | Cord Clip - AG |
| 22 | 13275 | Screw |
| 23 | 13142AG | Suction Control |
| 24 | 13257BZ | Support |