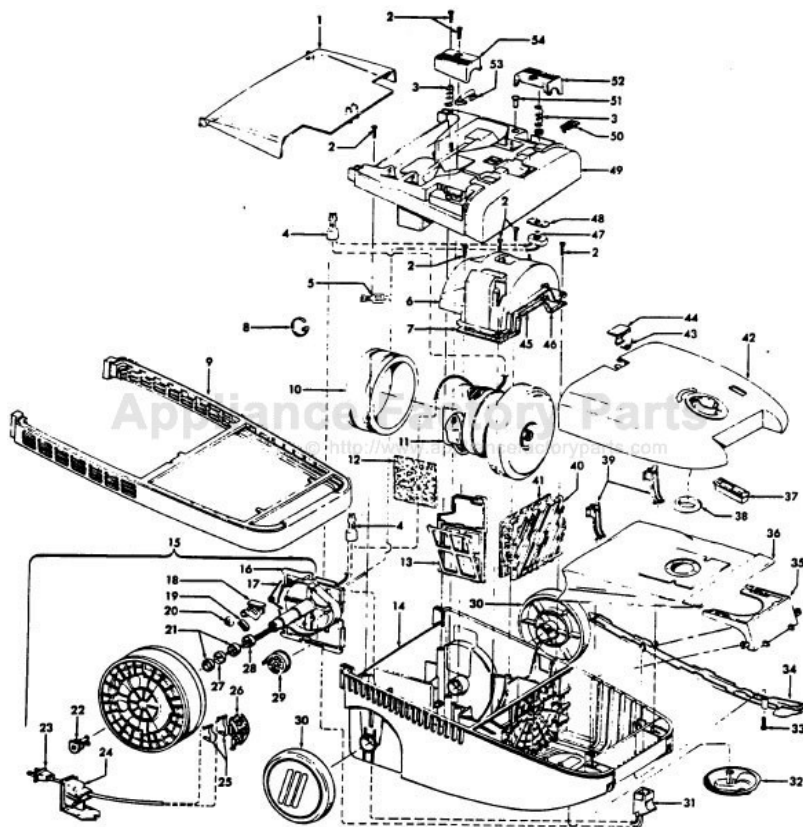


This Owner's Manual is provided and hosted by [Appliance Factory Parts](http://ApplianceFactoryParts.com).



HOOVER S3575 Owner's Manual

[Shop genuine replacement parts for HOOVER S3575](#)

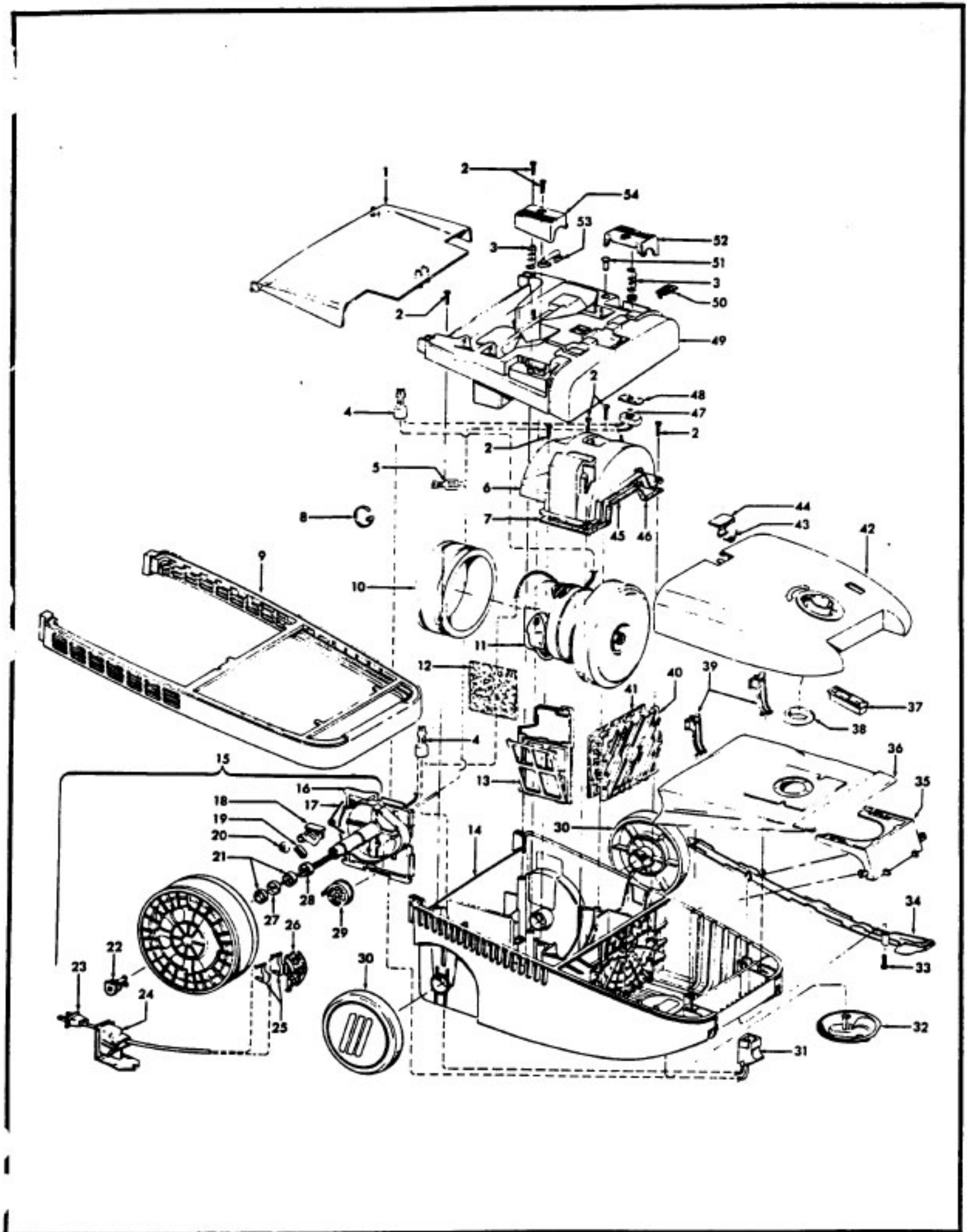


[Find Your HOOVER Vacuum Cleaner Parts - Select From 1456 Models](#)

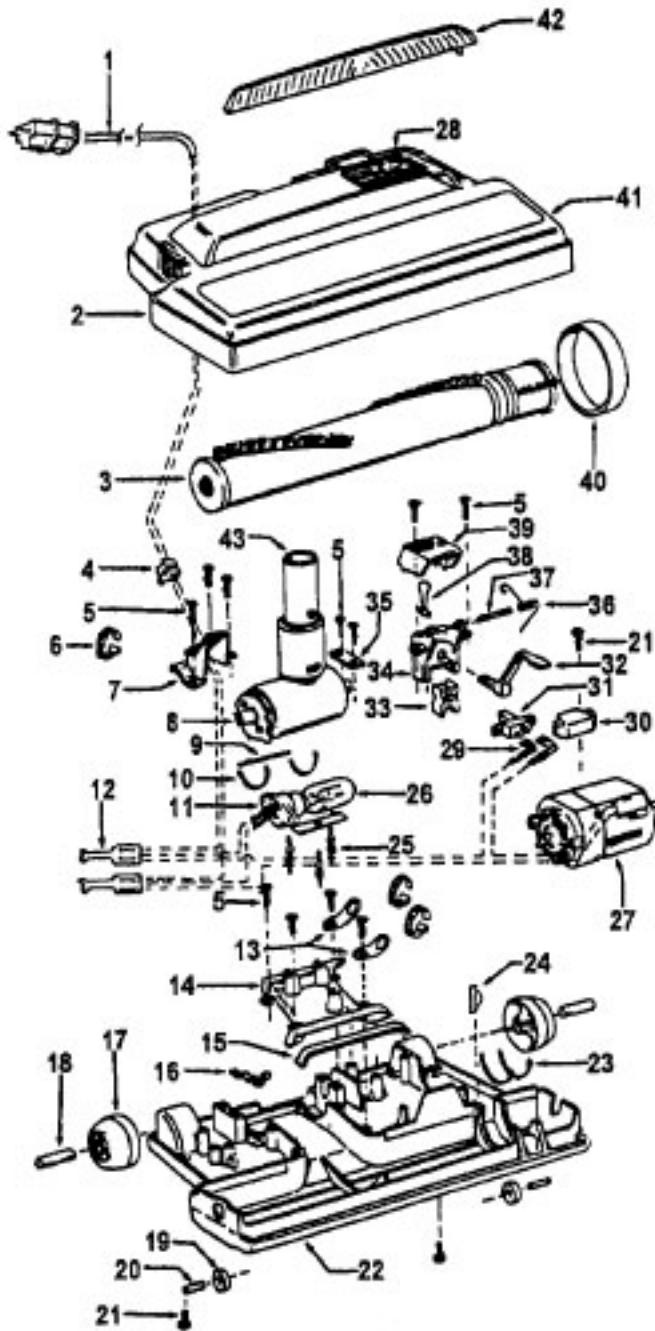
----- Manual continues below part list -----

Available Replacement Parts for HOOVER S3575

| | |
|----------------------------|---------------------------|
| H-4010064S | BAG OEM HOOVER (3 PACK) |
| H-43267002 | AGITATOR BEARING ASM |
| H-34174012 | FILTER, EXHAUST, 1PK |
| H-43414073 | Floor brush. |
| H-43414064 | DUSTING BRUSH (ONE PEICE) |
| H-38765009 | SECONDARY FILTER |
| HR-5000 | EXTENSION TUBE |
| HR-1050 | BELT FOR HOOVER |

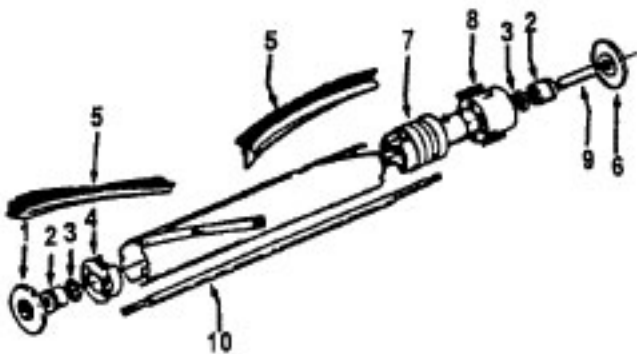


Power Nozzle - 48438226 - AG - S3575, S3585



| Ref. No. | Part No. | Description |
|----------|----------|---|
| 1 | 46321009 | Cord |
| 2 | 36231144 | Furniture Guard - ZW - S3575 |
| | 36231096 | Furniture Guard - MY - S358 |
| 3 | 48414044 | Agitator - 2B (Use 4B - 48416030) |
| 4 | 163768 | Strain Relief Bushing |
| 5 | 21447041 | Screw |
| 6 | 27479307 | Wire Tie |
| 7 | 36131067 | Retainer Housing |
| 8 | 43461021 | Nozzle Connector - AG |
| 9 | 34112005 | Seal |
| 10 | 34337003 | Seal |
| 11 | 47171009 | Lamp Socket |
| 12 | 18972 | Insulated Terminal (3 Wire) |
| 13 | 45517 | Wire Holder |
| 14 | 42256098 | Duct Cover |
| 15 | 34123017 | Seal |
| 16 | 35276001 | Detent Spring |
| 17 | 32175025 | Wheel - AG |
| 18 | 31523005 | Wheel Shaft |
| 19 | 32761001 | Wheel |
| 20 | 31522004 | Wheel Shaft |
| 21 | 21447007 | Screw |
| 22 | 42246121 | Base Plate Assm. (Incl. Items 17,18,19,20,23,24) |
| 23 | 34337004 | Lower Seal |
| | 34378010 | Upper Seal |
| 24 | 13261AY | Rib Shoe |
| 25 | 36218005 | Grommet |
| 26 | 27317307 | Dirt Finder Bulb - 15W |
| 27 | 43177073 | Motor Assm. |
| 28 | 51865018 | Indicator Lens |
| 29 | 27666702 | Terminal |
| 30 | 37258082 | Terminal Shield |
| 31 | 281770KD | Switch |
| 32 | 51151053 | Indicator - PH |
| 33 | 34361001 | Switch Actuator |
| 34 | 42262032 | Housing |
| 35 | 36131017 | Retainer |
| 36 | 38353007 | Torsion Spring |
| 37 | 31523006 | Pivot Pin |
| 38 | 38458002 | Depressor |
| 39 | 38433082 | Switch Pedal - ZW - S3575 |
| | 38433067 | Switch Pedal - MW - S3585 |
| 40 | 38528011 | Belt |
| 41 | 42252189 | Nozzle Body - AG |
| 42 | 39383060 | Lens |
| 43 | 43457037 | Swivel Tube - AG |

Agitator 48416030



| | | |
|----|----------|----------------|
| 1 | 48495AY | Thread Guard |
| 2 | 43267002 | Bearing |
| 3 | 21347003 | Washer |
| 4 | 36422001 | End |
| 5 | 48445017 | Agitator Brush |
| 6 | 41435018 | Thread Guard |
| 7 | 38537008 | End Pulley |
| 8 | 48418001 | Brush Ring |
| 9 | 31722019 | Spacer |
| 10 | 32724005 | Shaft |

Motor Assembly

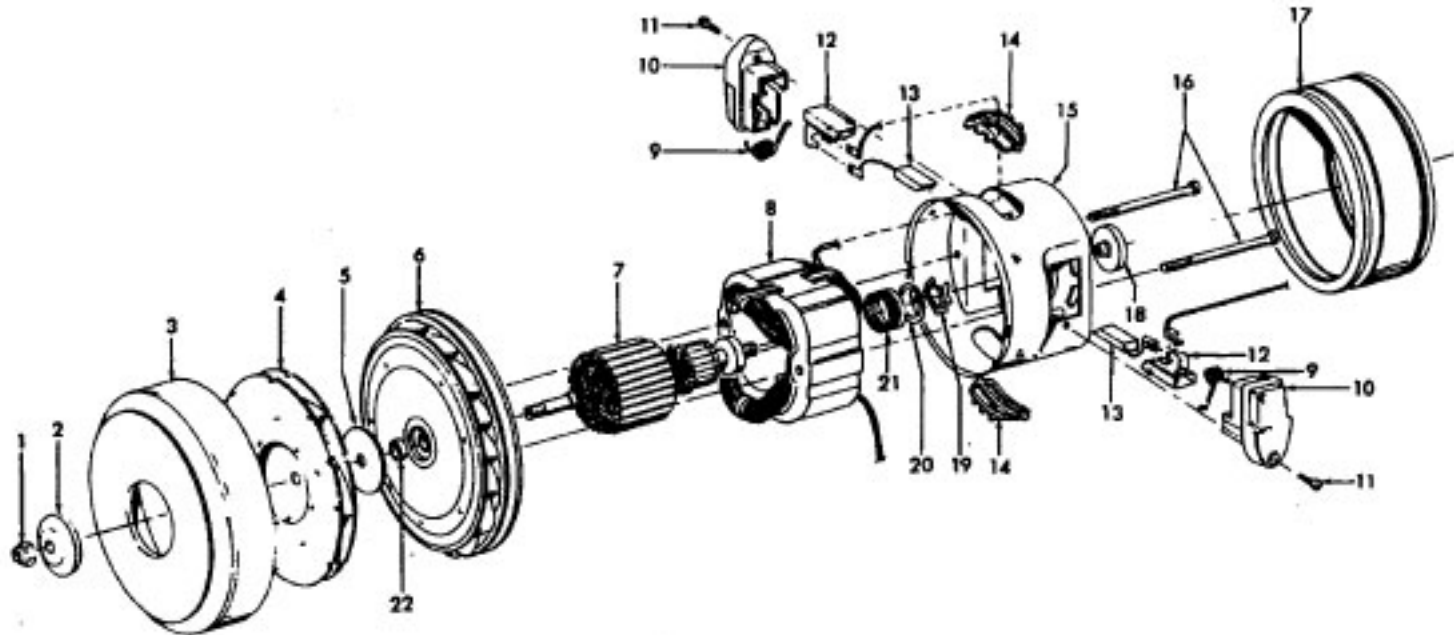
Models S3515, S3555, S3565, S3575, S3585,
S3595, S3603, S3605, S3609, S3615

S3515 (8.0 Amps)

S3555 (10.5 Amps)

S3565 (10.5 Amps)

Note: Refer to Data Label on cleaner for
reference to Amp Rating.

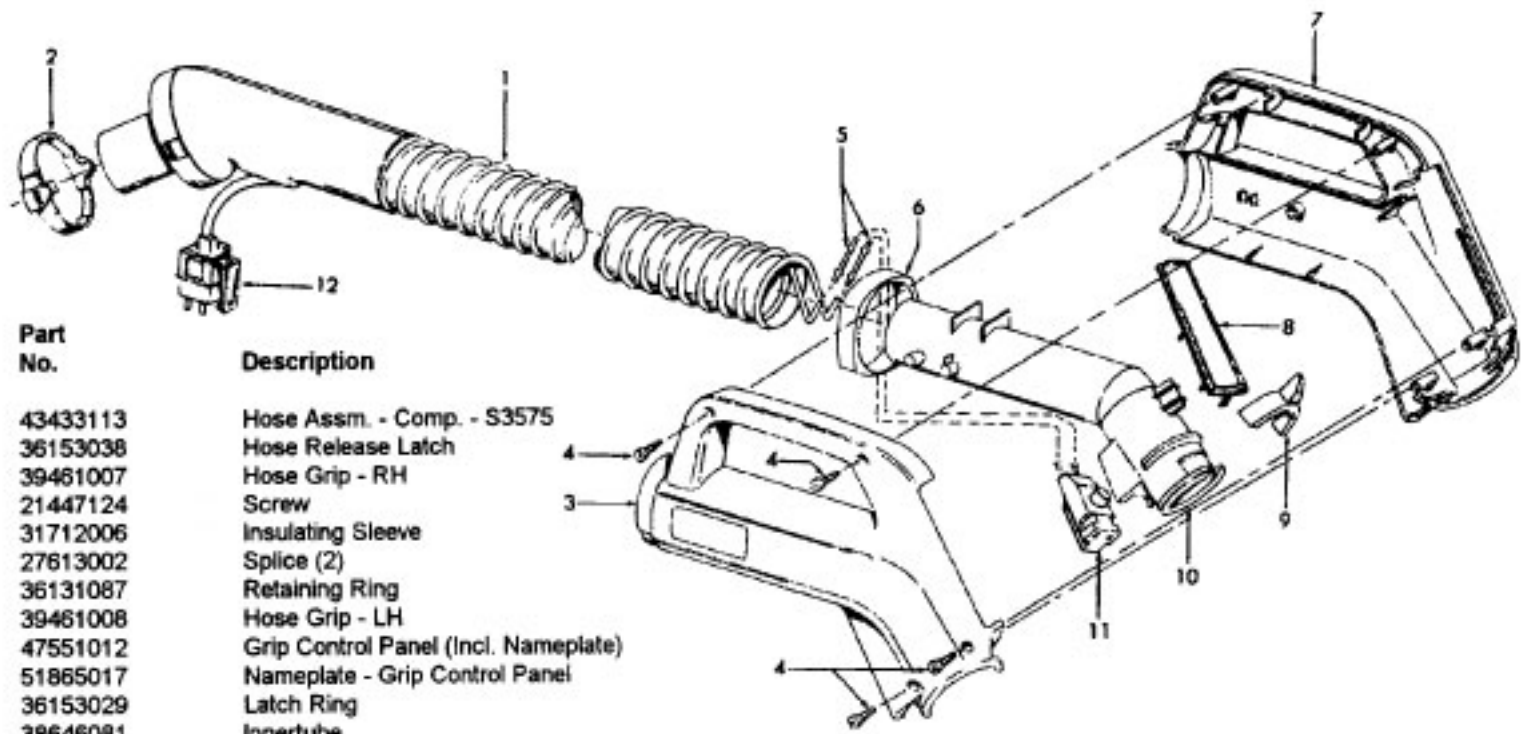


| Ref. No. | Part No. | Description |
|----------|----------|-------------------------------|
| | 43576116 | Motor Assm. |
| 1 | 12028 | Nut |
| 2 | 21312774 | Washer |
| 3 | 37196065 | Fan Cover |
| 4 | 43551008 | Fan Assm. |
| 5 | 21312774 | Washer - FW |
| 6 | 43551030 | Diffuser Assm. Comp. |
| 7 | 44765230 | Armature Assm. Comp. |
| 8 | 45311069 | Field Assm. Comp. |
| 9 | 38353004 | Spring (2) |
| 10 | 168038AG | Brush Carrier (2) |
| 11 | 21429406 | Screw - Self Tapping - EF (2) |
| 12 | 168506- | Brush Holder (2) |

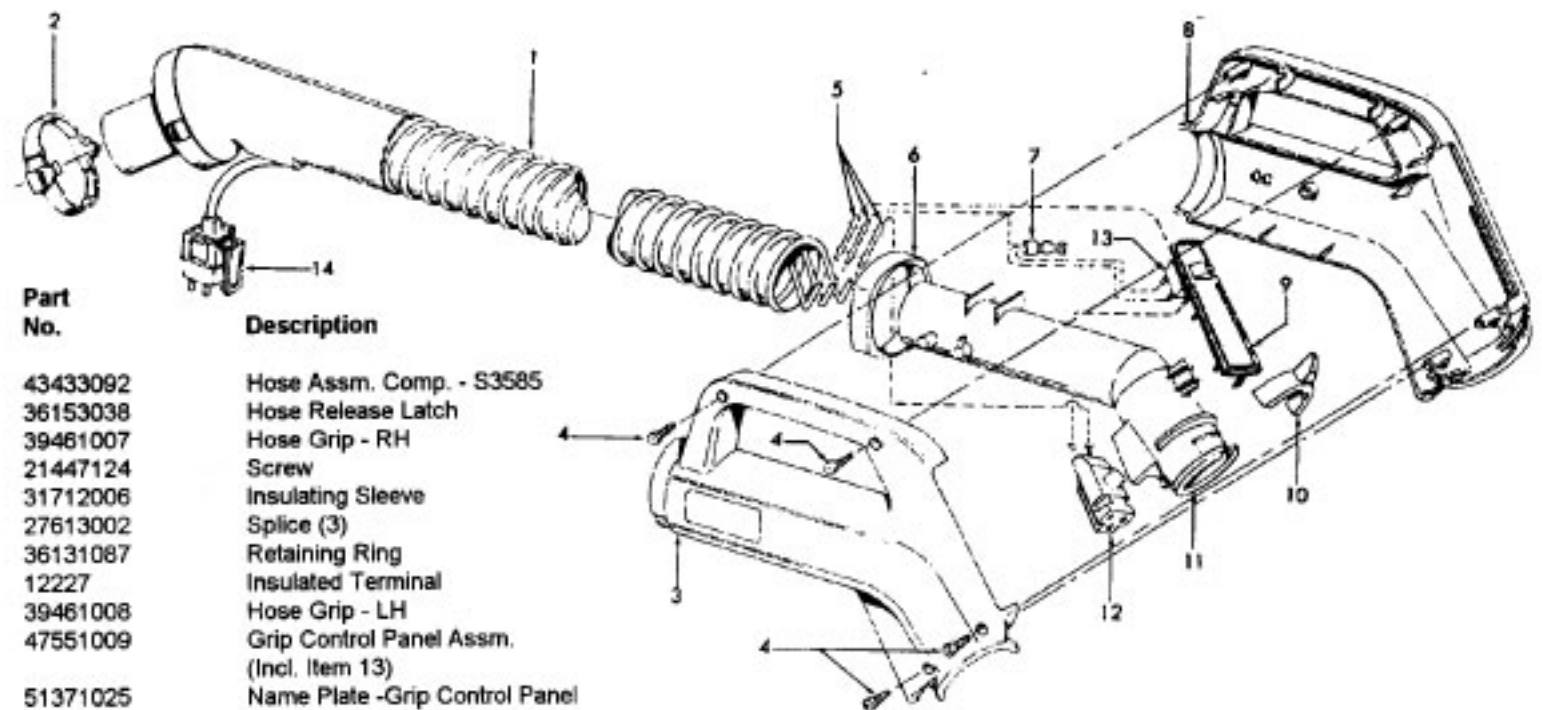
| Ref. No. | Part No. | Description |
|----------|----------|--------------------------------------|
| 13 | 167679 | Brush & Terminal Assm. |
| 14 | 169702BZ | Bushing (2) |
| 15 | 42192015 | Motor Housing Assm. |
| 16 | 36112003 | Screw - Special (2) (Metal Diffuser) |
| | 21447221 | Screw (Plastic Diffuser) |
| 17 | 36322031 | Motor Mount |
| 18 | 36116023 | Balancing Ring - Nut - AY |
| 19 | 21312778 | Spring Washer |
| 20 | 21345116 | Thrust Washer |
| 21 | 24198002 | Star Ring |
| 22 | 31148009 | Bearing Spacer - AY |

Hose Assembly

Models S3575, S3585

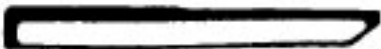


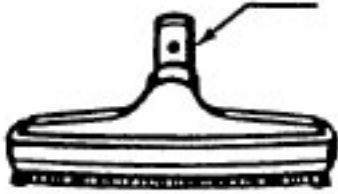



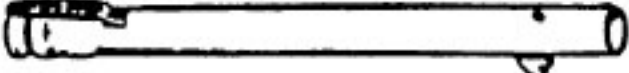
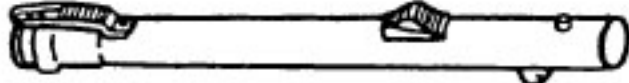
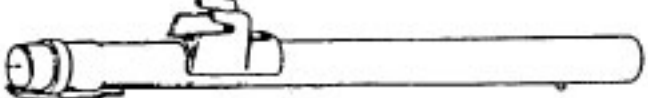



| Ref. No. | Part No. | Description |
|----------|----------|--------------------------------------|
| 1 | 43433113 | Hose Assm. - Comp. - S3575 |
| 2 | 36153038 | Hose Release Latch |
| 3 | 39461007 | Hose Grip - RH |
| 4 | 21447124 | Screw |
| 5 | 31712006 | Insulating Sleeve |
| | 27613002 | Splice (2) |
| 6 | 36131087 | Retaining Ring |
| 7 | 39461008 | Hose Grip - LH |
| 8 | 47551012 | Grip Control Panel (Incl. Nameplate) |
| | 51865017 | Nameplate - Grip Control Panel |
| 9 | 36153029 | Latch Ring |
| 10 | 38646081 | Innertube |
| 11 | 46325032 | Connector |
| 12 | 36152029 | Plug Latch |
| | 40300051 | Cord Repair Kit - 2W |



| Ref. No. | Part No. | Description |
|----------|----------|--|
| 1 | 43433092 | Hose Assm. Comp. - S3585 |
| 2 | 36153038 | Hose Release Latch |
| 3 | 39461007 | Hose Grip - RH |
| 4 | 21447124 | Screw |
| 5 | 31712006 | Insulating Sleeve |
| | 27613002 | Splice (3) |
| 6 | 36131087 | Retaining Ring |
| 7 | 12227 | Insulated Terminal |
| 8 | 39461008 | Hose Grip - LH |
| 9 | 47551009 | Grip Control Panel Assm. (Incl. Item 13) |
| | 51371025 | Name Plate -Grip Control Panel |
| 10 | 36153029 | Latch Ring |
| 11 | 38646034 | Inner Tube |
| 12 | 46325031 | Connector |
| 13 | 28161051 | Switch |
| 14 | 36152029 | Plug Latch |
| | 40300052 | Cord Repair Kit - 3W |

Cleaning Tools - Futura, Spectrum, Dimension, WindTunnel

| | | |
|---|----------|--|
|  | 38617017 | Crevice Tool - AG |
|  | 43414057 | Furniture Nozzle - AG |
| | 43414141 | Furniture Nozzle - ABR |
|  | 43414064 | Dusting Brush - AG |
|  | 38644020 | Swivel Connector - AG |
| | 38644040 | Swivel Connector - AAP |
|  | 43414073 | Floor Brush - AG |
|  | 48447001 | + Brush Back |
|  | 36172584 | Cord/Wand Clip |
|  | 43453052 | Ext. Tube - 20 - AX |
| | 43453027 | Ext. Tube |
| | 43453058 | + Ext. Tube - BL 20 w/o Cord Clip |
|  | 43453023 | Ext. Tube - AX 20 |
|  | 43453095 | Ext. Tube - AX 20 (Black Storage Clip) (Spectrum) |
| | 43453098 | Ext. Tube - AX 20 (Gray Storage Clip) (Futura) |
| | 43453099 | Ext. Tube - AX 20 (Black Storage Clip) (WindTunnel Canister) |
|  | 3863801P | Extension Tube - Poly - AG |