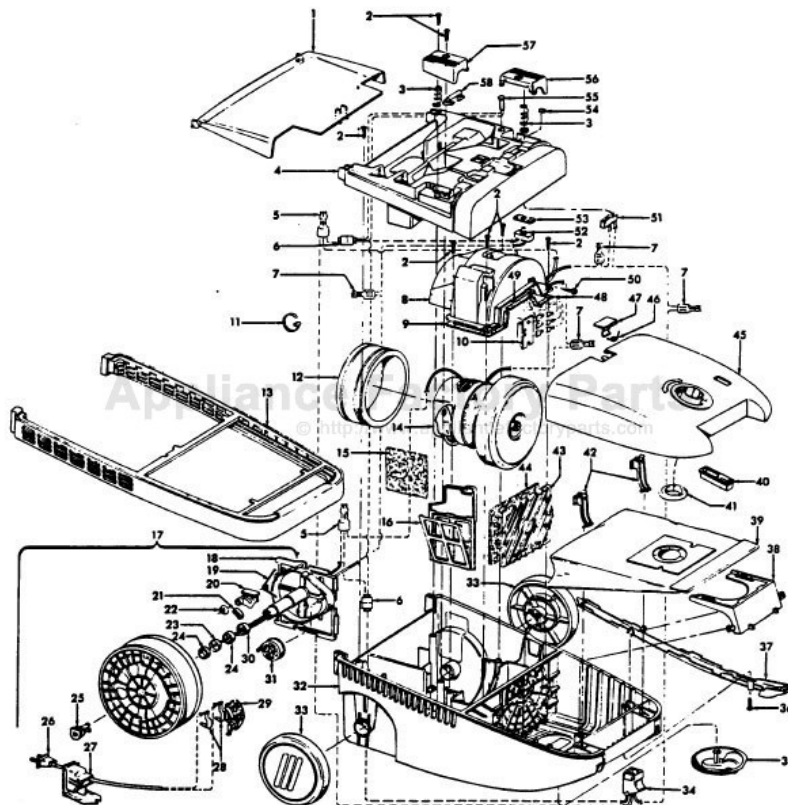


This Owner's Manual is provided and hosted by [Appliance Factory Parts](http://Appliance Factory Parts).



# HOOVER S3585 Owner's Manual

[Shop genuine replacement parts for HOOVER S3585](#)

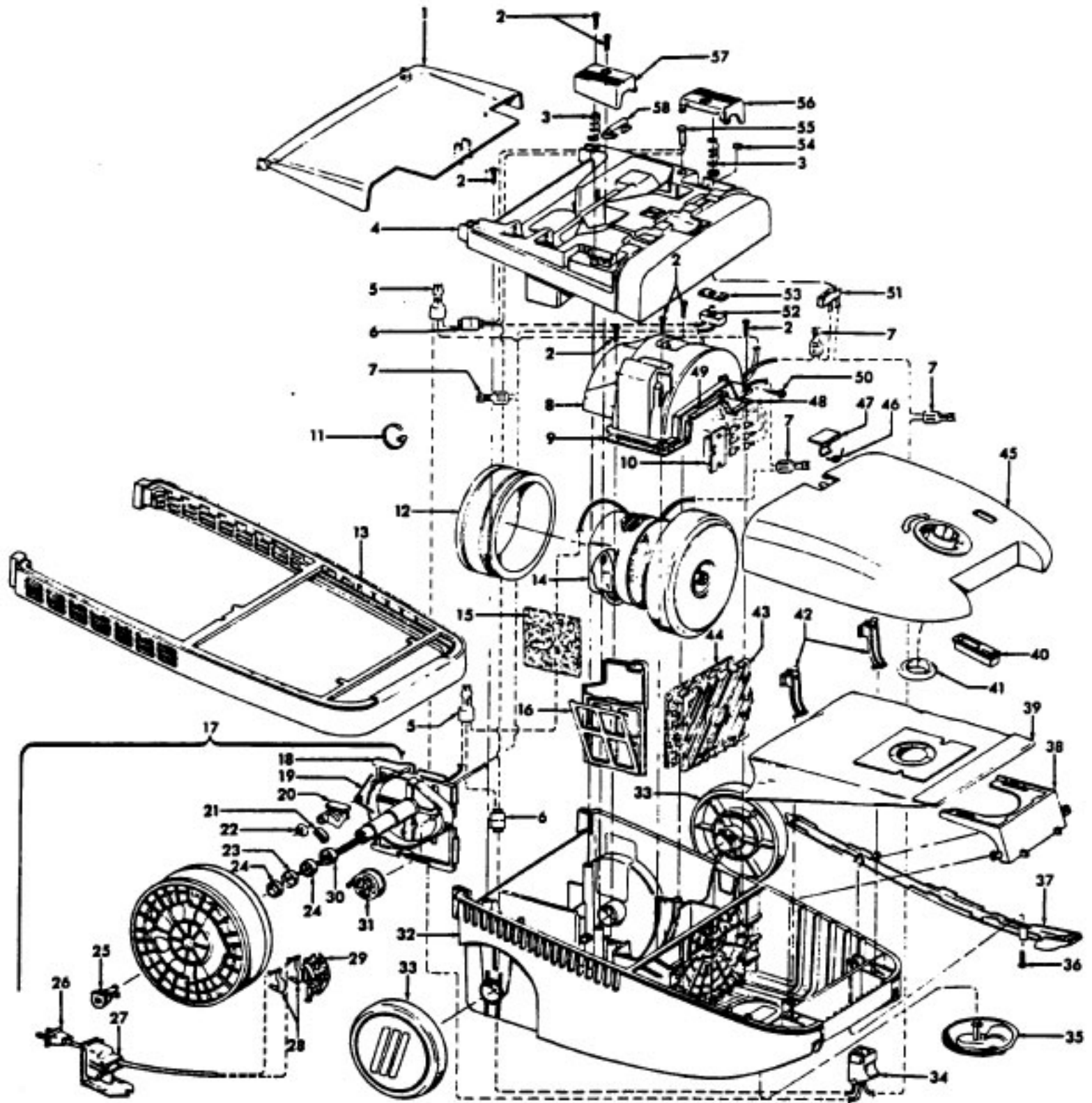


[Find Your HOOVER Vacuum Cleaner Parts - Select From 1456 Models](#)

----- Manual continues below part list -----

## Available Replacement Parts for HOOVER S3585

<a href="#">H-43267002</a>	AGITATOR BEARING ASM
<a href="#">H-34174012</a>	FILTER, EXHAUST, 1PK
<a href="#">H-43414073</a>	Floor brush.
<a href="#">H-43414064</a>	DUSTING BRUSH (ONE PEICE)
<a href="#">H-38765009</a>	SECONDARY FILTER
<a href="#">HR-5000</a>	EXTENSION TUBE
<a href="#">HR-1050</a>	BELT FOR HOOVER





## Motor Assembly

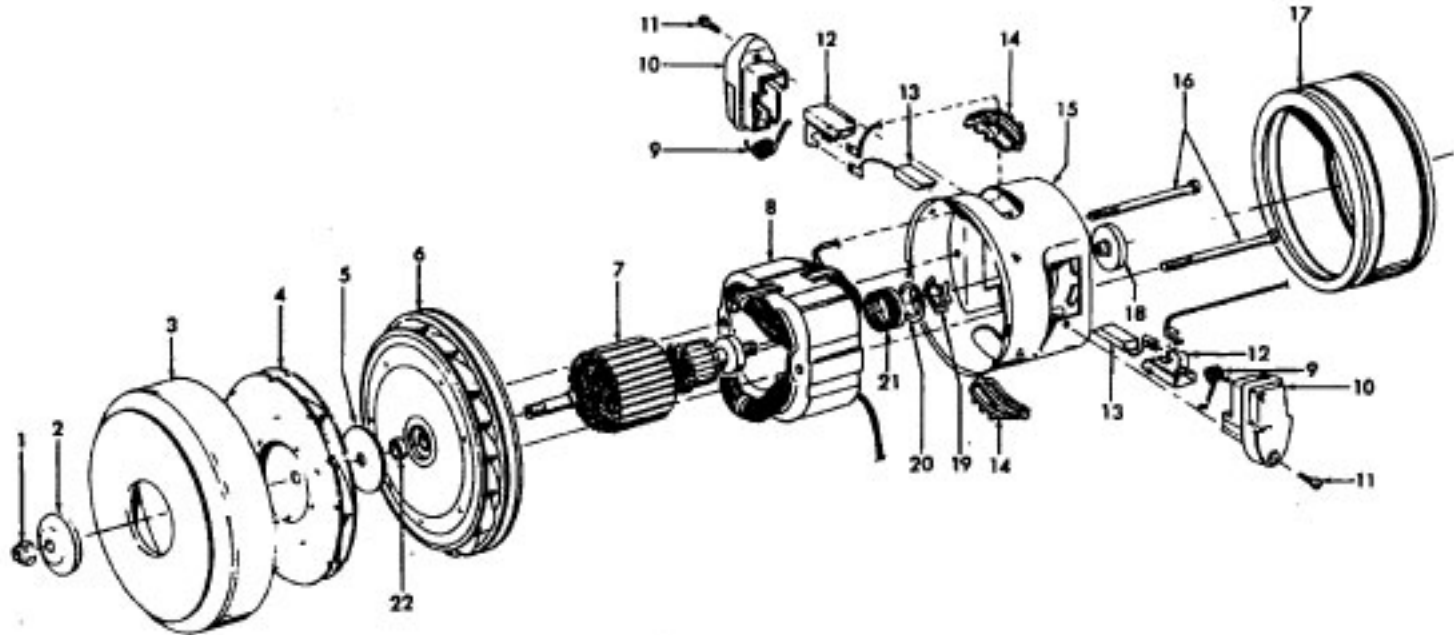
Models S3515, S3555, S3565, S3575, S3585,  
S3595, S3603, S3605, S3609, S3615

S3515 (8.0 Amps)

S3555 (10.5 Amps)

S3565 (10.5 Amps)

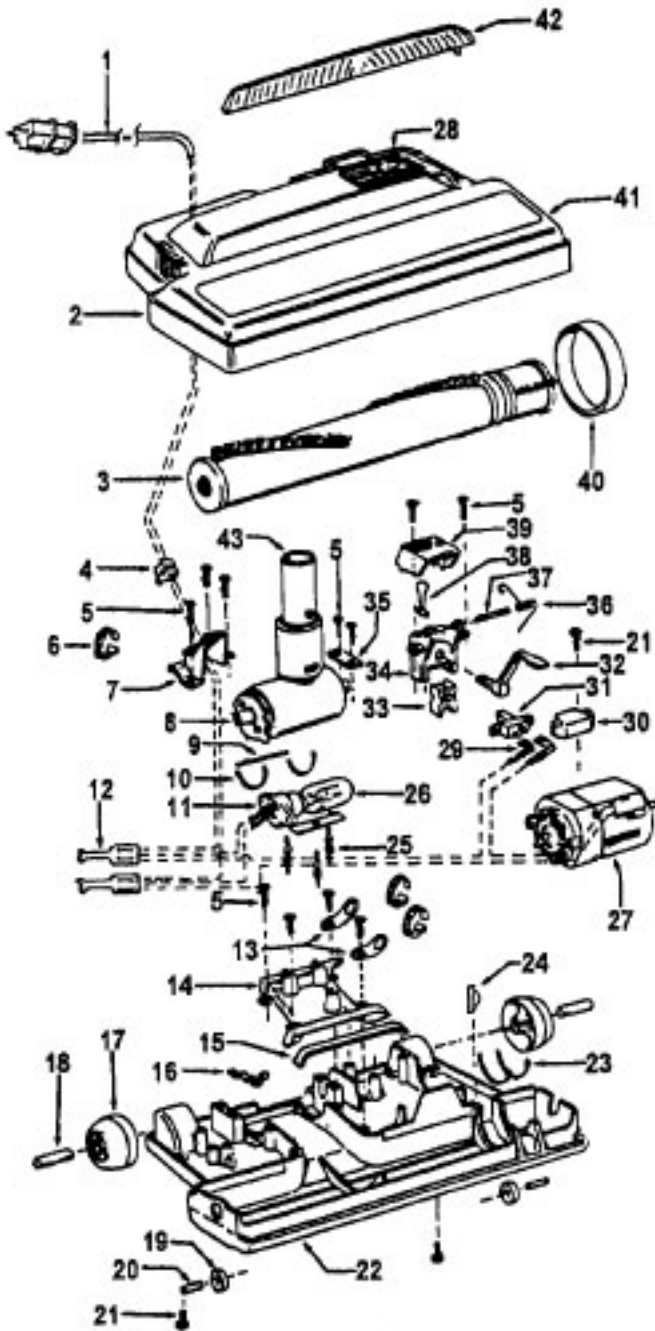
Note: Refer to Data Label on cleaner for  
reference to Amp Rating.



Ref. No.	Part No.	Description
	43576116	Motor Assm.
1	12028	Nut
2	21312774	Washer
3	37196065	Fan Cover
4	43551008	Fan Assm.
5	21312774	Washer - FW
6	43551030	Diffuser Assm. Comp.
7	44765230	Armature Assm. Comp.
8	45311069	Field Assm. Comp.
9	38353004	Spring (2)
10	168038AG	Brush Carrier (2)
11	21429406	Screw - Self Tapping - EF (2)
12	168506-	Brush Holder (2)

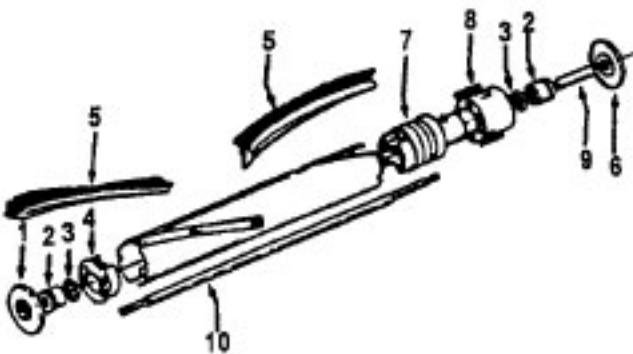
Ref. No.	Part No.	Description
13	167679	Brush & Terminal Assm.
14	169702BZ	Bushing (2)
15	42192015	Motor Housing Assm.
16	36112003	Screw - Special (2) (Metal Diffuser)
	21447221	Screw (Plastic Diffuser)
17	36322031	Motor Mount
18	36116023	Balancing Ring - Nut - AY
19	21312778	Spring Washer
20	21345116	Thrust Washer
21	24198002	Star Ring
22	31148009	Bearing Spacer - AY

**Power Nozzle - 48438226 - AG - S3575, S3585**

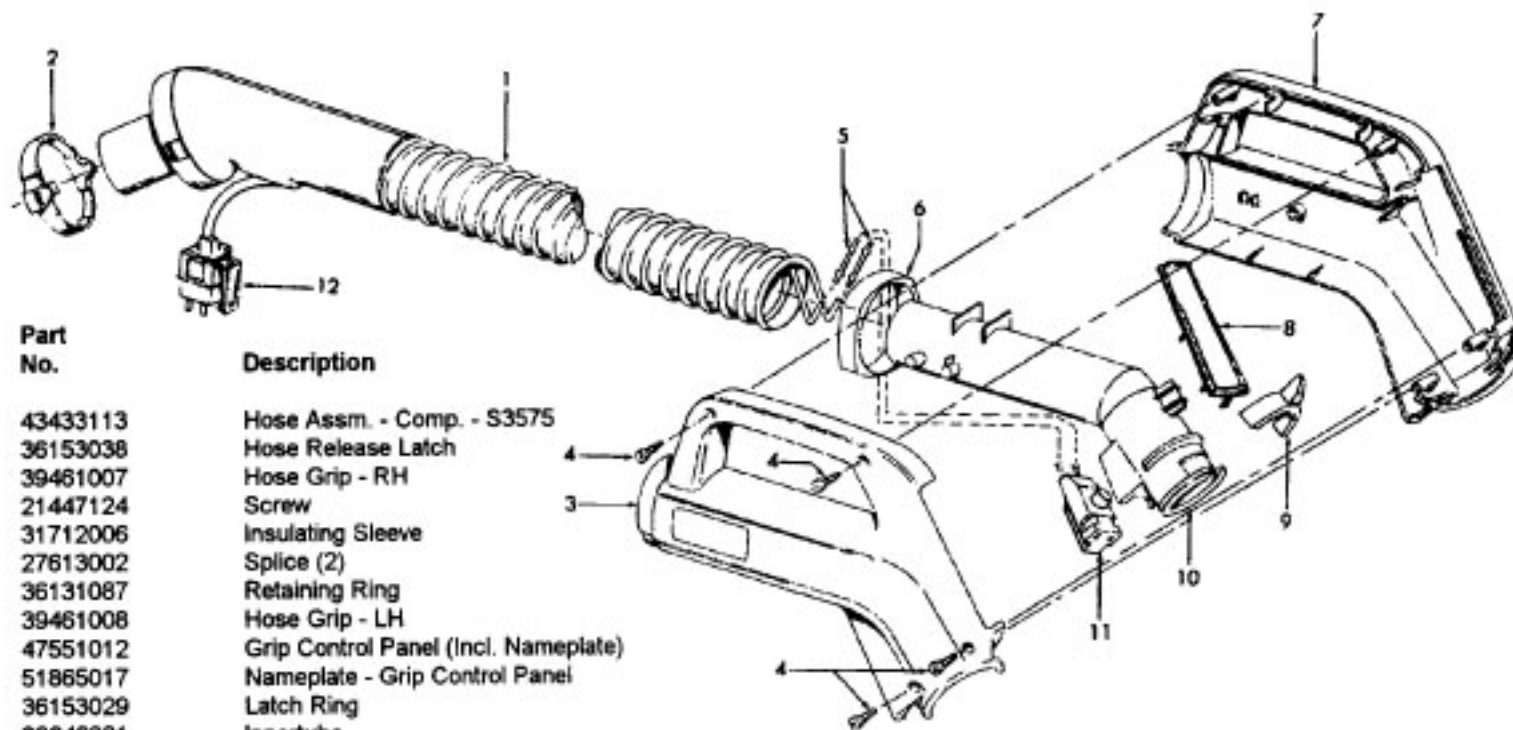


Ref. No.	Part No.	Description
1	46321009	Cord
2	36231144	Furniture Guard - ZW - S3575
	36231096	Furniture Guard - MY - S358
3	48414044	Agitator - 2B (Use 4B - 48416030)
4	163768	Strain Relief Bushing
5	21447041	Screw
6	27479307	Wire Tie
7	36131067	Retainer Housing
8	43461021	Nozzle Connector - AG
9	34112005	Seal
10	34337003	Seal
11	47171009	Lamp Socket
12	18972	Insulated Terminal (3 Wire)
13	45517	Wire Holder
14	42256098	Duct Cover
15	34123017	Seal
16	35276001	Detent Spring
17	32175025	Wheel - AG
18	31523005	Wheel Shaft
19	32761001	Wheel
20	31522004	Wheel Shaft
21	21447007	Screw
22	42246121	Base Plate Assm. (Incl. Items 17,18,19,20,23,24)
23	34337004	Lower Seal
	34378010	Upper Seal
24	13261AY	Rib Shoe
25	36218005	Grommet
26	27317307	Dirt Finder Bulb - 15W
27	43177073	Motor Assm.
28	51865018	Indicator Lens
29	27666702	Terminal
30	37258082	Terminal Shield
31	281770KD	Switch
32	51151053	Indicator - PH
33	34361001	Switch Actuator
34	42262032	Housing
35	36131017	Retainer
36	38353007	Torsion Spring
37	31523006	Pivot Pin
38	38458002	Depressor
39	38433082	Switch Pedal - ZW - S3575
	38433067	Switch Pedal - MW - S3585
40	38528011	Belt
41	42252189	Nozzle Body - AG
42	39383060	Lens
43	43457037	Swivel Tube - AG

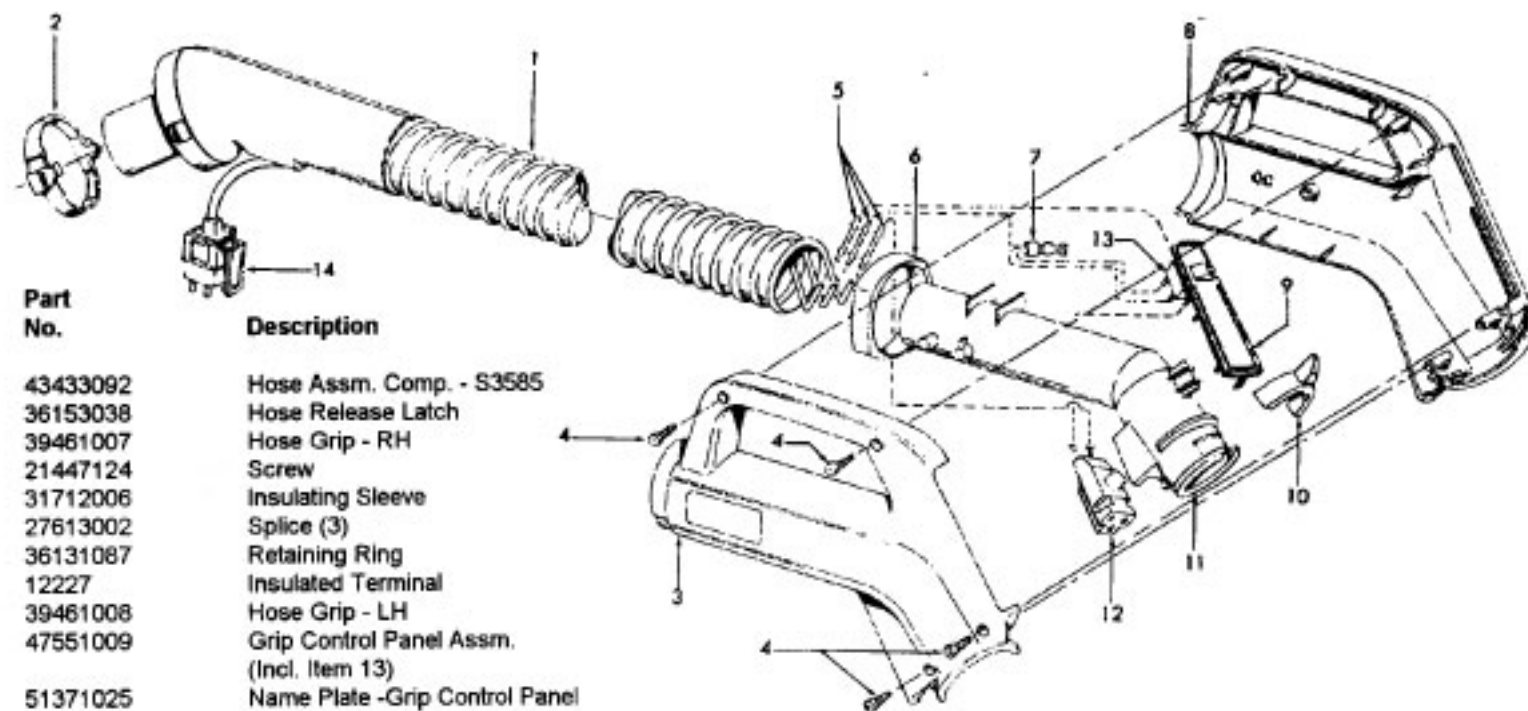
**Agitator 48416030**



1	48495AY	Thread Guard
2	43267002	Bearing
3	21347003	Washer
4	36422001	End
5	48445017	Agitator Brush
6	41435018	Thread Guard
7	38537008	End Pulley
8	48418001	Brush Ring
9	31722019	Spacer
10	32724005	Shaft

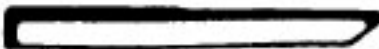








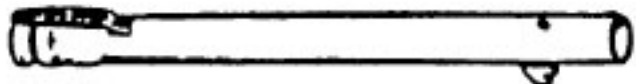
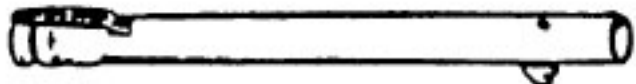
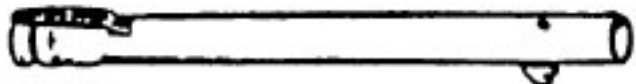
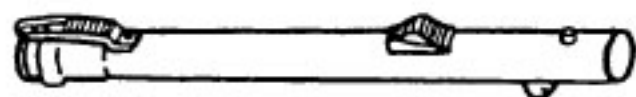
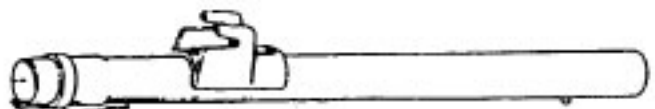
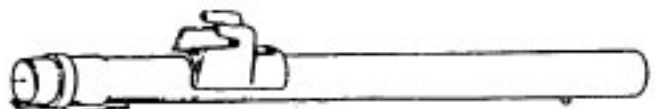
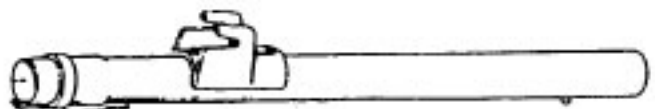
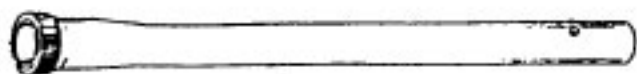


Ref. No.	Part No.	Description
1	43433113	Hose Assm. - Comp. - S3575
2	36153038	Hose Release Latch
3	39461007	Hose Grip - RH
4	21447124	Screw
5	31712006	Insulating Sleeve
	27613002	Splice (2)
6	36131087	Retaining Ring
7	39461008	Hose Grip - LH
8	47551012	Grip Control Panel (Incl. Nameplate)
	51865017	Nameplate - Grip Control Panel
9	36153029	Latch Ring
10	38646081	Innertube
11	46325032	Connector
12	36152029	Plug Latch
	40300051	Cord Repair Kit - 2W



Ref. No.	Part No.	Description
1	43433092	Hose Assm. Comp. - S3585
2	36153038	Hose Release Latch
3	39461007	Hose Grip - RH
4	21447124	Screw
5	31712006	Insulating Sleeve
	27613002	Splice (3)
6	36131087	Retaining Ring
7	12227	Insulated Terminal
8	39461008	Hose Grip - LH
9	47551009	Grip Control Panel Assm. (Incl. Item 13)
	51371025	Name Plate -Grip Control Panel
10	36153029	Latch Ring
11	38646034	Inner Tube
12	46325031	Connector
13	28161051	Switch
14	36152029	Plug Latch
	40300052	Cord Repair Kit - 3W

# Cleaning Tools - Futura, Spectrum, Dimension, WindTunnel

	38617017	Crevice Tool - AG
	43414057	Furniture Nozzle - AG
	43414141	Furniture Nozzle - ABR
	43414064	Dusting Brush - AG
	38644020	Swivel Connector - AG
	38644040	Swivel Connector - AAP
	43414073	Floor Brush - AG
	48447001	Brush Back
	36172584	Cord/Wand Clip
	43453052	Ext. Tube - 20 - AX
	43453027	Ext. Tube
	43453058	Ext. Tube - BL 20 w/o Cord Clip
	43453023	Ext. Tube - AX 20
	43453095	Ext. Tube - AX 20 (Black Storage Clip) (Spectrum)
	43453098	Ext. Tube - AX 20 (Gray Storage Clip) (Futura)
	43453099	Ext. Tube - AX 20 (Black Storage Clip) (WindTunnel Canister)
	3863801P	Extension Tube - Poly - AG