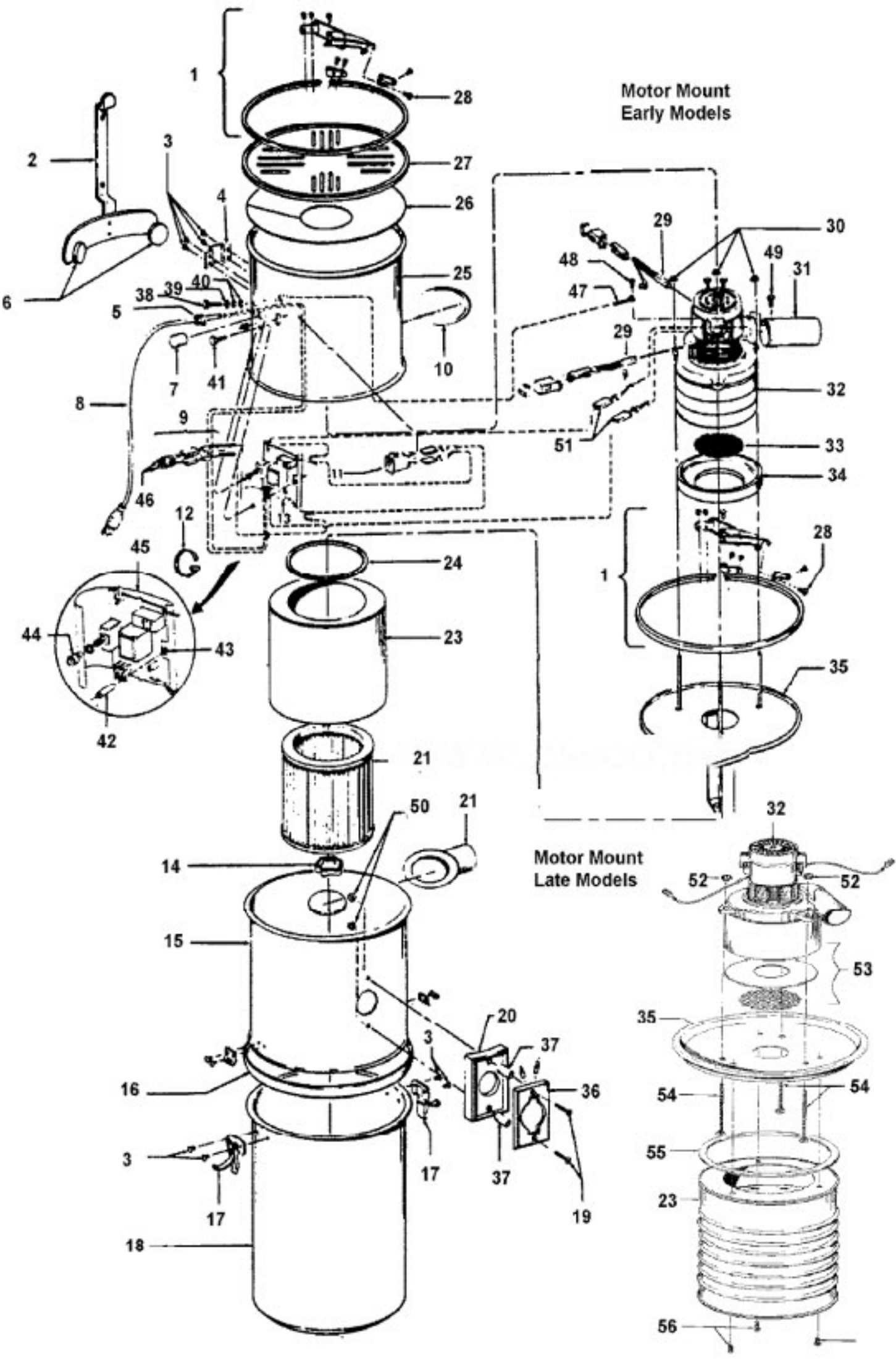


Motor Mount
Early Models



Model Number: S5675--
BOM/Serial #: S5675--
Graphic Title: MAINHOUSING, MOTOR ASSEMBLY

Image	Key	Part Number	Description	Substitution	Qty.
1	1	41129050	CLAMP RING ASSEM-AG-		2
1	2	41947011	WALL MOUNT BRACKET		1
1	3	012647EF	RIVET		8
1	4	34712003	BRACKET		1
1	5	039049--	STRAIN RELIEF-U7047/		1
1	6	31113011	PAD - CCS		2
1	7	23762511	LOW VOLTAGE CAP		1
1	8	46543025	CORD		1
1	9	27724050	TERMINAL BUSHING		1
1	10	38783013	GROMMET		1
1	11	28162014	SWITCH ASSEMBLY		1
1	12	27479307	CABLE TIE		1
1	13	27135008	TRANS/RELAY/BREAKER		1
1	14	23718206	FILTER RETAINING KNO		1
1	15	42213380	FILTER ENCLOSURE-ABM		1
1	16	38784069	GASKET-WELDED		1
1	17	23715191	LATCH - CCS		2
1	18	43641018	DUST CONTAINER AB MS		1
1	19	21774007	SCREW		2
1	20	35143001	BEZEL-UTILITY INLET-		1
1	21	25435010	INTAKE PORT - AG - C		1
1	22	38763006	FILTER		1
1	23	38761018	DEFLECTOR-S5675		1
1	24	38784066	SEAL - AG		1
1	25	42192005	MOTOR ENCLOSURE-S567		1
1	26	38763019	AIR BAFFLE - S5569-0		1
1	27	42228008	TOP COVER-ABM-S5675		1
1	28	21427255	SCREW-SELF TAPPING		2
1	29	27292002	MOTOR BRUSH-CCS-S556		2
1	30	21372203	SPEED NUT		3
1	31	31744024	EXHAUST PORT		1
1	32	59132008	Motor-3 Stage-S5630		1
1	33	38763005	MOTOR SCREEN		1
1	34	38784050	MOTOR GASKET		1
1	35	41427027	MOTOR FILTER MOUNT A		1

Image	Key	Part Number	Description	Substitution	Qty.
1	36	43526014	INLET VALVE - AG		1
1	37	31742008	SPACER - BEZEL		2
1	38	-----	NOT REQUIRED PART OR SEE NOTE		1
1	39	-----	NOT REQUIRED PART OR SEE NOTE		1
1	40	015854EF	NUT		2
1	41	21479439	SCREW		1
1	42	31733006	SPACER		1
1	43	037351--	EXPANSION NUT-T1011		1
1	44	31324001	SPACER-S3121		1
1	45	34227012	PCB BARRIER		1
1	46	162133--	TERMINAL-0910		2
1	47	46155016	LEAD WIRE - GREEN		1
1	48	036695--	SCREW		1
1	49	21447216	SCREW		1
1	50	21852107	LOCK NUT		1
1	51	162130--	INSULATING POD-0910		3
1	52	21854103	NUT-C2075		1
1	53	43543005	MTR MOUNTING KIT-CVS		1
1	54	21831029	CARRIAGE BOLT		3
1	55	38784066	SEAL - AG		1
1	56	21447216	SCREW		1
1	57	56513334	OWNER MANUAL-S5573,S		1
1	57	58262008	BOTTOM SUPPORT-S5671		1
1	57	58262007	CORNER SUPPORT		1