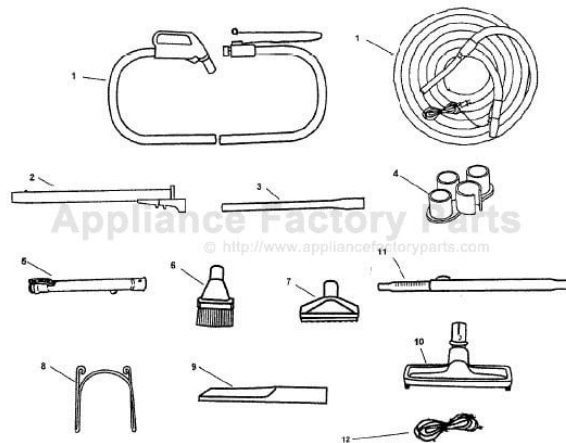


This Owner's Manual is provided and hosted by [Appliance Factory Parts](http://www.appliancefactoryparts.com).



HOOVER S5682 Owner's Manual

[Shop genuine replacement parts for HOOVER S5682](#)



[Find Your HOOVER Vacuum Cleaner Parts - Select From 1456 Models](#)

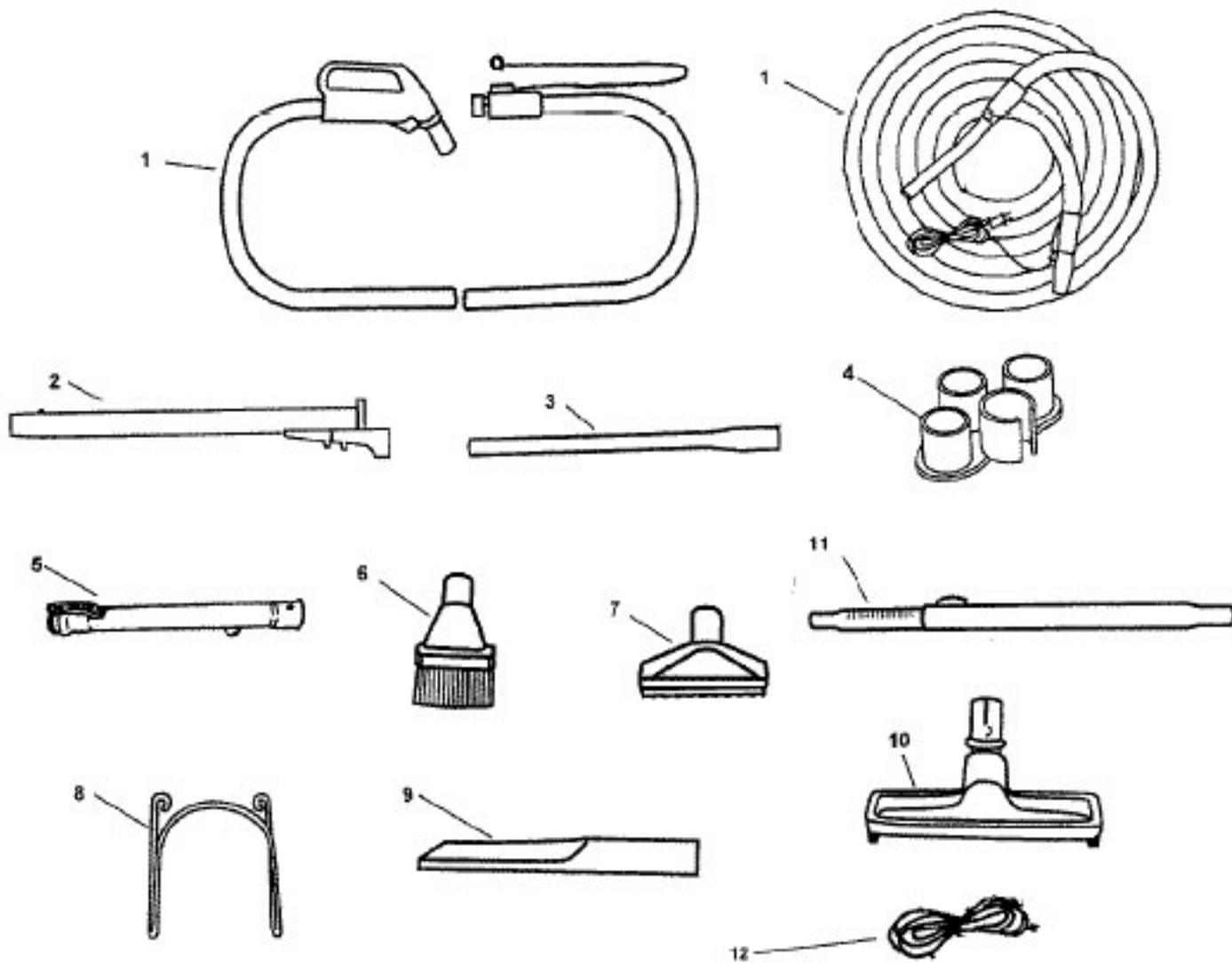
----- Manual continues below part list -----

Available Replacement Parts for HOOVER S5682

| | |
|----------------------------|---------------------------|
| 48414036 | HOOVER ELITE BRUSH ROLLER |
| H-43267002 | AGITATOR BEARING ASM |
| HR-1050 | BELT FOR HOOVER |

CENTRAL VACUUM SYSTEM

ASSEMBLY SCHEMATIC



CENTRAL VACUUM SYSTEM

PART LISTING /

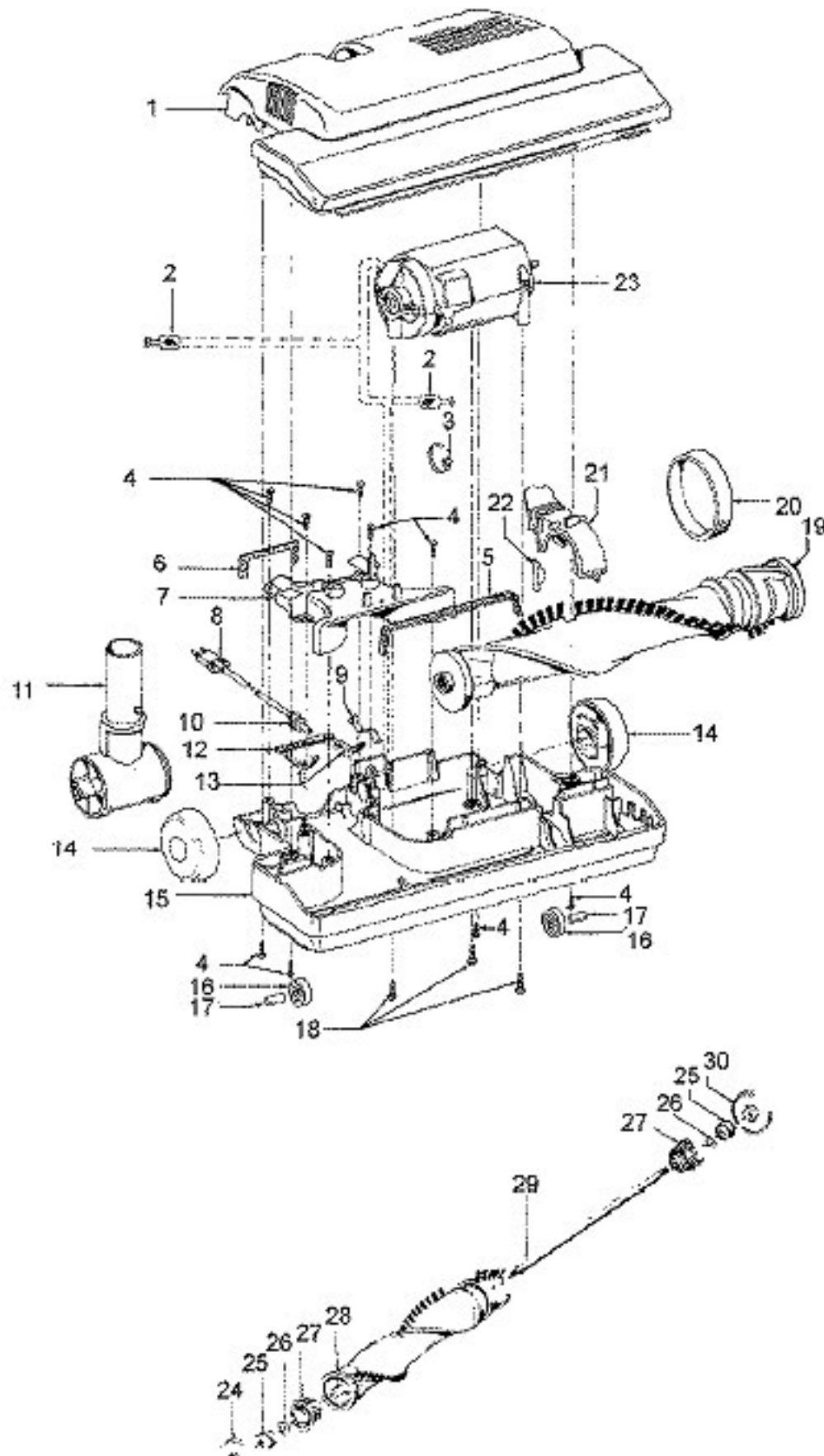
| ITEM | PART NUMBER | MODELS TO FIT | PART DESCRIPTION |
|------|-------------|---------------|--------------------------------------|
| 1 | 59132012 | S5682 | HOSE ASSEMBLY WITH PISTOL GRIP - 30' |
| | 59132013 | S5682 | HOSE ASSEMBLY - 30' |
| 2 | 59132014 | S5682 | 21" TUBE ASSEMBLY |
| 3 | 38634078 | S5682 | EXTENSION TUBE |
| 4 | 59132016 | S5682 | WAND TOOL RACK |
| 5 | 43453038 | S5682 | EXTENSION TUBE ASSEMBLY - 17" |
| 6 | 43414145 | S5682 | DUSTING BRUSH |
| 7 | 38614029 | S5682 | FURNITURE NOZZLE |
| 8 | 33188001 | S5682 | WIRE FRAME HOSE HOLDER |
| 9 | 38617024 | S5682 | CREVICE TOOL |
| 10 | 43414142 | S5682 | FLOOR BRUSH ASSEMBLY |
| 11 | 59132015 | S5682 | TELESCOPIC WAND - METAL |
| 12 | 59132044 | S5682 | CONNECTION CORD |

S5682

CENTRAL VACUUM SYSTEM

ASSEMBLY SCHEMATIC

S5682



CENTRAL VACUUM SYSTEM

PART LISTING

| ITEM | PART NUMBER | MODELS To FIT | PART DESCRIPTION |
|------|-------------|---------------|---------------------------|
| 1 | 42252A55 | S5682 | NOZZLE COVER ASSEMBLY |
| 2 | 012227-- | S5682 | TERMINALS |
| 3 | 27479307 | S5682 | CABLE TIE |
| 4 | 21447003 | S5682 | SCREW |
| 5 | 34123039 | S5682 | DUCT COVER SEAL |
| 6 | 34253018 | S5682 | REAR SEAL |
| 7 | 42256103 | S5682 | DUCT COVER ASSEMBLY |
| 8 | 46321009 | S5682 | ATTACHMENT CORD |
| 9 | 35276008 | S5682 | DETENT SPRING |
| 10 | 163768-- | S5682 | STRAIN RELIEF |
| 11 | 90001397 | S5682 | NOZZLE CONNECTOR ASSEMBLY |
| 12 | 34112007 | S5682 | SEAL |
| 13 | 34122014 | S5682 | SEAL |
| 14 | 90001395 | S5682 | WHEEL AND AXLE ASSEMBLY |
| 15 | 42246114 | S5682 | BASE PLATE ASSEMBLY |
| 16 | 32761001 | S5682 | WHEEL |
| 17 | 31522004 | S5682 | WHEEL SHAFT |
| 18 | 21479801 | S5682 | SCREW - SELF TAPPING |
| 19 | 48414079 | S5682 | AGITATOR ASSEMBLY |
| 20 | 38528011 | S5682 | BELT |
| 21 | 36923008 | S5682 | BELT GUARD |
| 22 | 013261AY | S5682 | RIB SHOE |
| 23 | 90001369 | S5682 | MOTOR ASSEMBLY COMPLETE |
| 24 | 36423016 | S5682 | THREAD GUARD - RIGHT |
| 25 | 43267002 | S5682 | AGITATOR BEARING ASSEMBLY |
| 26 | 21347003 | S5682 | CONICAL WASHER |
| 27 | | S5682 | AGITATOR ENDS |
| 28 | | S5682 | AGITATOR BODY |
| 29 | | S5682 | AGITATOR SHAFT |
| 30 | 36423017 | S5682 | THREAD GUARD - LEFT |
| | | | |
| | 48438270 | S5682 | POWER NOZZLE COMPLETE |

S5682