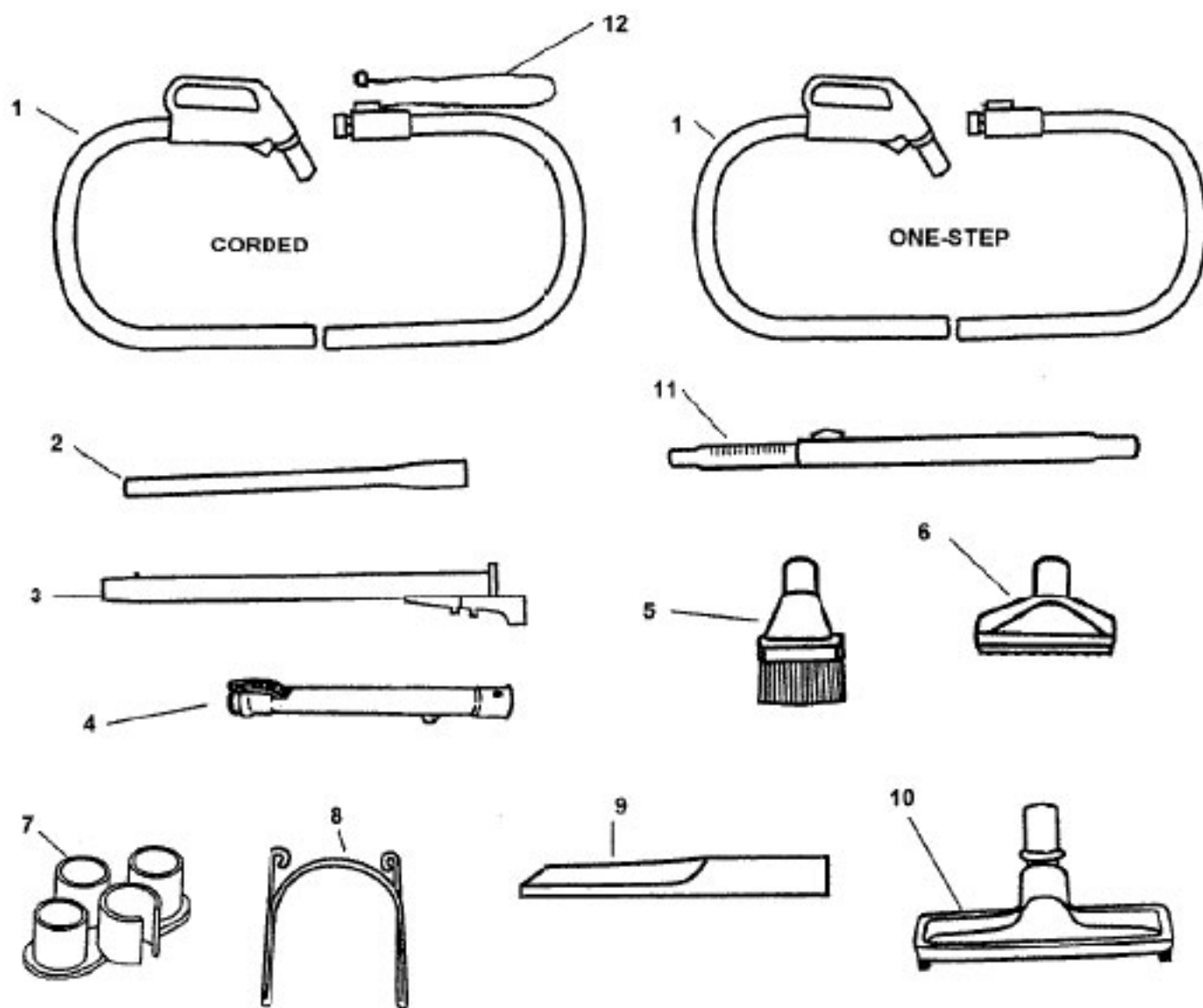


CENTRAL VACUUM SYSTEM

ASSEMBLY SCHEMATIC

S5684



CENTRAL VACUUM SYSTEM

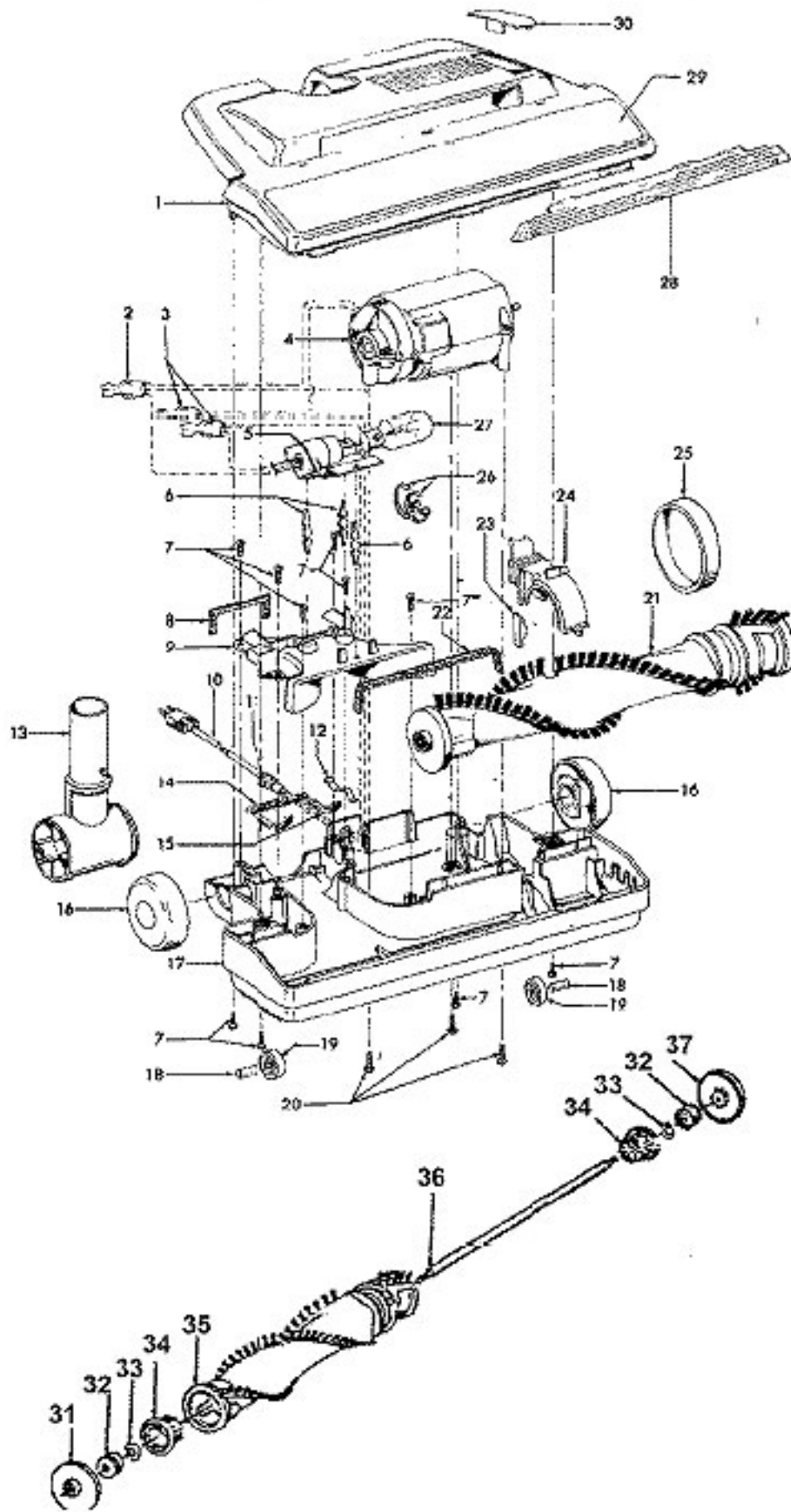
PART LISTING

| ITEM | PART NUMBER | MODELS To FIT | PART DESCRIPTION |
|------|-------------|---------------|------------------------------|
| 1 | 59132013 | S5684 | HOSE ASSEMBLY - 30' CORDED |
| | 59132012 | S5684 | HOSE ASSEMBLY - 30' ONE STEP |
| | 59132018 | S5684 | HOSE ASSEMBLY - 35' CORDED |
| 2 | 38634078 | S5684 | EXTENSION TUBE |
| 3 | 59132014 | S5684 | 21" TUBE ASSEMBLY |
| 4 | 43453038 | S5684 | EXTENSION TUBE ASSEMBLY 17" |
| 5 | 43414145 | S5684 | DUSTING BRUSH |
| 6 | 38614029 | S5684 | FURNITURE NOZZLE |
| 7 | 59132016 | S5684 | WAND TOOL RACK |
| 8 | 33188001 | S5684 | WIRE FRAME / HOSE HOLDER |
| 9 | 38617024 | S5684 | CREVICE TOOL |
| 10 | 43414142 | S5684 | FLOOR BRUSH ASSEMBLY |
| 11 | 59132015 | S5684 | TELESCOPIC WAND - METAL |
| | 59132026 | S5684 | TELESCOPIC WAND - ALUMINUM |
| 12 | 59132027 | S5684 | PIGTAIL CORD |
| | | | |
| | 59132028 | S5684 | SWITCH KIT - CORDED HOSES |
| | 59132033 | S5684 | FLOOR BRUSH - 12" |

S5684

CENTRAL VACUUM SYSTEM

ASSEMBLY SCHEMATIC



S5684

CENTRAL VACUUM SYSTEM

PART LISTING

| ITEM | PART NUMBER | MODELS To FIT | PART DESCRIPTION |
|------|-------------|---------------|---------------------------|
| 1 | 42252346 | S5684 | NOZZLE COVER ASSEMBLY |
| 2 | 018972-- | S5684 | THERMAL INSULATED |
| 3 | 012227-- | S5684 | THERMINALS |
| 4 | 90001369 | S5684 | MOTOR ASSEMBLY |
| 5 | 47171020 | S5684 | SIRT FINDER SOCKET |
| 6 | 36218016 | S5684 | GROMMET |
| 7 | 21447003 | S5684 | SCREW |
| 8 | 34253018 | S5684 | REAR SEAL |
| 9 | 42256099 | S5684 | DUCT COVER ASSEMBLY |
| 10 | 46521021 | S5684 | POWER NOZZLE CORD |
| 11 | 163768-- | S5684 | STRAIN RELIEF |
| 12 | 35276008 | S5684 | DETENT SPRING |
| 13 | 90001397 | S5684 | NOZZLE CONNECTOR ASSEMBLY |
| 14 | 34112007 | S5684 | SEAL |
| 15 | 34122014 | S5684 | SEAL |
| 16 | 90001395 | S5684 | WHEEL ASSEMBLY |
| 17 | 90001368 | S5684 | BASE PLATE ASSEMBLY |
| 18 | 31522004 | S5684 | WHEEL SHAFT |
| 19 | 32761001 | S5684 | WHEEL |
| 20 | 21479801 | S5684 | SCREW - SELF TAPPING |
| 21 | 48414081 | S5684 | AGITATOR COMPLETE |
| 22 | 34123039 | S5684 | DUCT COVER SEAL |
| 23 | 013261AY | S5684 | RIB SHOE |
| 24 | 36923008 | S5684 | BELT GUARD |
| 25 | 38528011 | S5684 | BELT |
| 26 | 27479307 | S5684 | CABLE TIE |
| 27 | 27317307 | S5684 | DIRT FINDER LAMP |
| 28 | 39383105 | S5684 | DIRT FINDER LENS |
| 29 | 52125141 | S5684 | NAME PLATE |
| 30 | 48111010 | S5684 | BELT LENS |
| 31 | 36423016 | S5684 | THREAD GUARD - RIGHT |
| 32 | 43267002 | S5684 | AGITATOR BEARING ASSEMBLY |
| 33 | 21347003 | S5684 | CONICAL WASHER |
| 34 | | S5684 | AGITATOR ENDS |
| 35 | | S5684 | AGITATOR BODY |
| 36 | | S5684 | AGITATOR SHAFT |
| 37 | 36423017 | S5684 | THREAD GUARD - LEFT |

S5684