

This Owner's Manual is provided and hosted by [Appliance Factory Parts](#).



# Weber 6519099 Owner's Manual

[Shop genuine replacement parts for Weber 6519099](#)



[Find Your Weber Grill Parts - Select From 2037 Models](#)

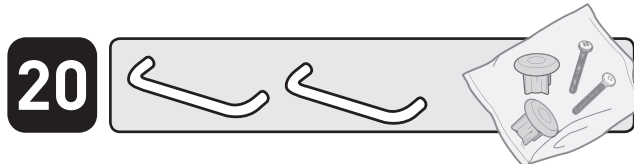
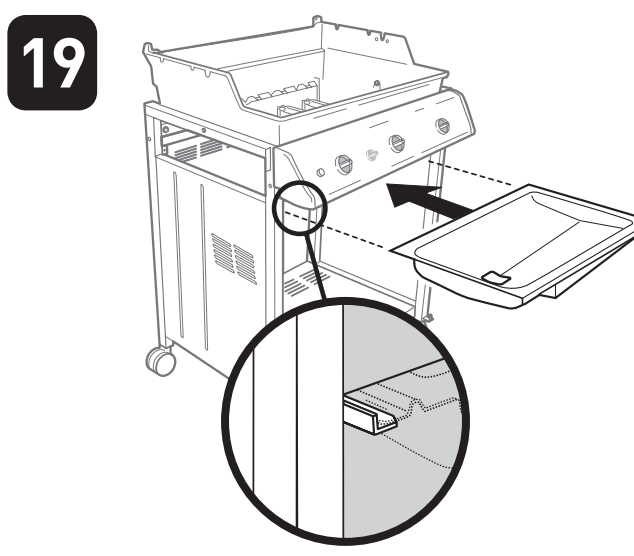
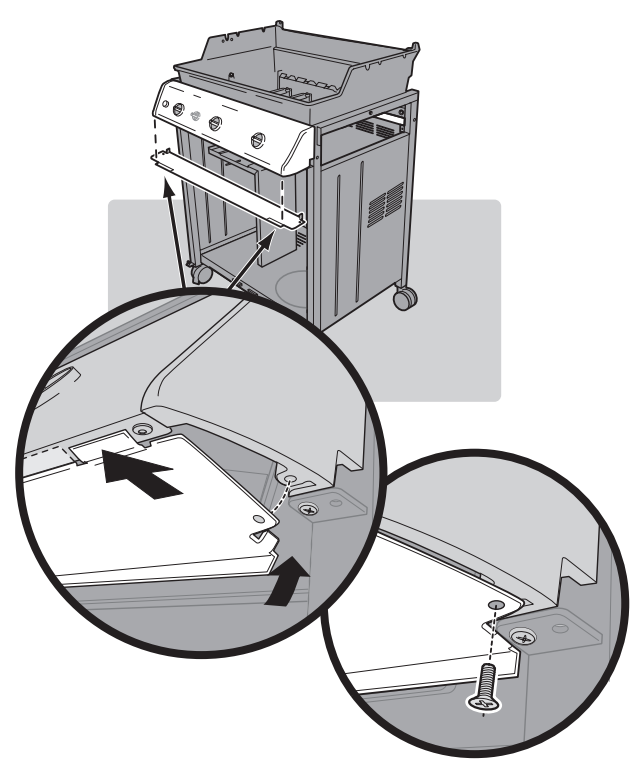
----- Manual continues below part list -----

## Available Replacement Parts for Weber 6519099

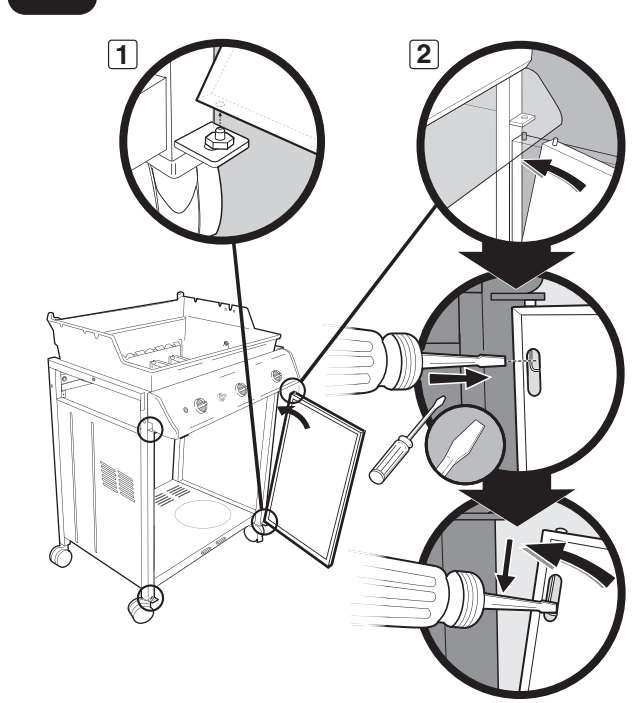
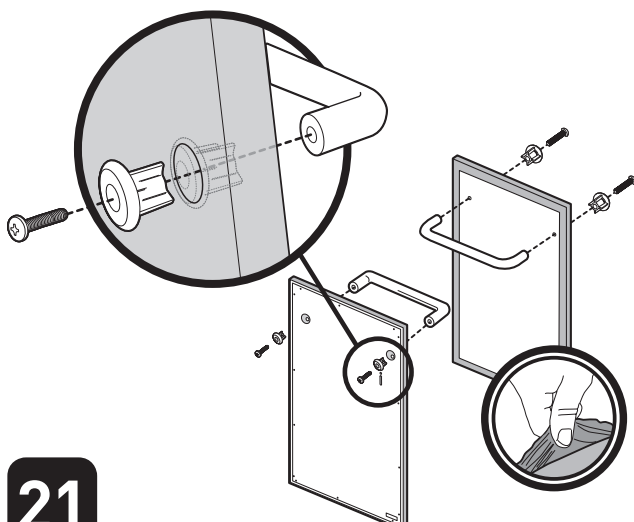
<a href="#">01200</a>	lid handle ( Universal )
<a href="#">93305</a>	CATCH PAN KIT ALUMINUM
<a href="#">62152</a>	grid, ci, 19.25 x 24.75; BBQ Grillware
<a href="#">527S2</a>	grid, ss wire, 19.5 x 25.5; DCS
<a href="#">67088</a>	THERM F/C GEN 18 US
<a href="#">67717</a>	BEZEL THERM GEN/SUM 07
<a href="#">88206</a>	HDWE LID TO FIREBOX ASSY
<a href="#">67718</a>	HNDL SHROUD GEN B/C 07
<a href="#">70332</a>	ADJUSTABLE DOOR HINGE 07
<a href="#">88063</a>	HDWE TANK BLOCKER SUMM '07
<a href="#">81803</a>	HDWE KIT SUM 07
<a href="#">81270</a>	MAGNET DOOR GEN/SUM 07
<a href="#">88082</a>	HANDLE DOOR GEN SINGLE 07/08
<a href="#">67755</a>	REAR PANEL PLAT GEN 300
<a href="#">88214</a>	TANK SCALE GEN B/C 07
<a href="#">99281</a>	Hose and regulator, QCC1, 42 inch
<a href="#">88065</a>	HDWE GLIDE BTTNS GEN/SUM '07
<a href="#">81544</a>	ASSY MATCH STICK HOLDER OUS
<a href="#">70359</a>	CASTER W/O LOCK GEN/SUM 07
<a href="#">67762</a>	HDWE J-NUT/WSHR/SCW HH 1/4-20 (6pk)
<a href="#">70360</a>	CASTER LOCKING GEN/SUM 07
<a href="#">67844</a>	FRAME CONN REAR GEN 300 '08
<a href="#">82793</a>	BTM PNL PLAT LP GEN 300 09
<a href="#">62774</a>	HDWE BRNR TUBE/GRSE RAILS GEN '11
<a href="#">62756</a>	HEAT PLATES, SET OF 2
<a href="#">88848</a>	KIT CONTROL KNOB MAIN GEN 300 DOM '11
<a href="#">65054</a>	RACK WARMING GEN 300 '14
<a href="#">62750</a>	TABLE ASSY LHS GEN '11
<a href="#">7621</a>	FLAV BARS SET ENM GEN '11
<a href="#">62782</a>	COOKBOX GEN 310/320 '11

<a href="#">62771</a>	TANK BLKR GEN '11
<a href="#">62776</a>	HDWE FRAME/REAR PNL GEN '11/SUM '07
<a href="#">62758</a>	FRAME LHS GEN '11
<a href="#">61453</a>	DOOR ASSY LHS ESPR GEN US '11
<a href="#">62787</a>	TABLE ASSY RHS GEN 11
<a href="#">62791</a>	MFLD ASSY LP GEN 310 '11 DOM
<a href="#">62781</a>	HDWE MFLD GEN '11
<a href="#">62778</a>	HDWE HEAT/RAIN SHIELD& S/B GEN '11
<a href="#">62779</a>	HDWE CNTRL PNL GEN '11
<a href="#">88826</a>	HOUSING/SHLD ASSY IGN MODULE GEN '11
<a href="#">62766</a>	PNL CNTRL BTM GEN '11
<a href="#">62772</a>	CORR SS GAS TUBE MAIN GEN 2011
<a href="#">62768</a>	BULKHEAD ASSY SAE 3/8 GEN '11
<a href="#">13111</a>	burner, str pipe, ss, 19.5 x 1; Weber
<a href="#">03341</a>	4-outlet AA spark generator; Weber
<a href="#">93025</a>	heat plate, porc stl, 17.625 x 2.25; Web
<a href="#">62806</a>	IGN ELECTRODE SET 310/320 GEN '11
<a href="#">62786</a>	RAILS GRS TRAY (SET) BTM GEN '11
<a href="#">79499</a>	CASTER W/O LOCK GEN/SUM '12
<a href="#">04821</a>	ELECTRODE WITH WIRE
<a href="#">17553</a>	DELUXE COVER PVC FOR GENESIS 300
<a href="#">7553</a>	CVR PREM GEN E/S-300 SERIES
<a href="#">65937</a>	GRATES COOK GEN 300 ENM C.I.
<a href="#">HXM7621</a>	FLAVOR BARS SET OF 5 PORCELAIN STEL
<a href="#">6415-25</a>	drip pan small 25 pack aftermarket

18 

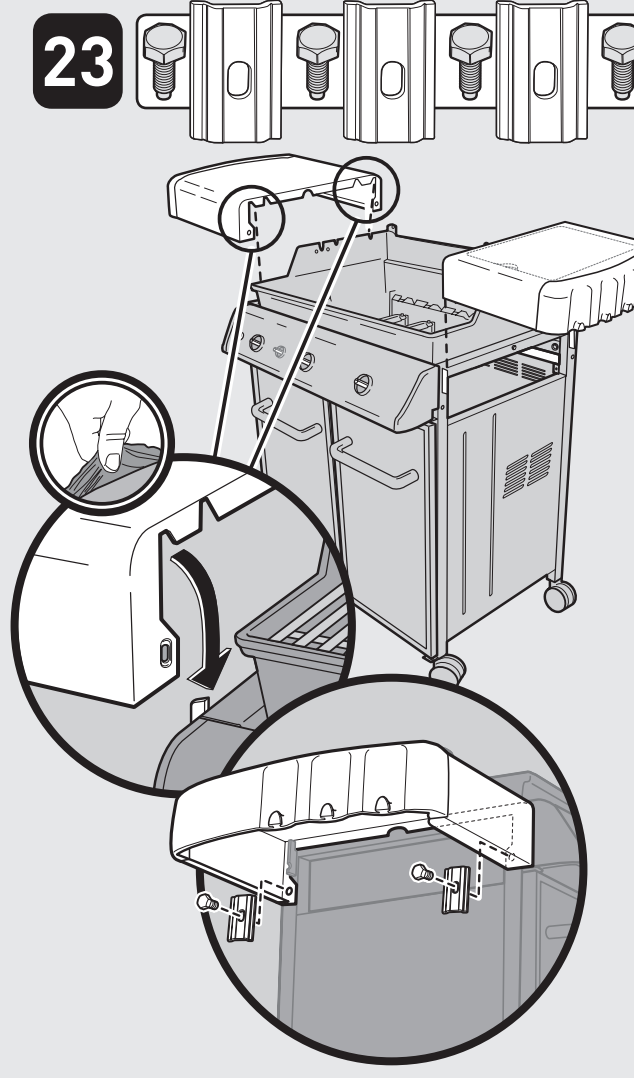


**Before installing component, remove protective film from the stainless steel part.**  
**Antes de instalar el componente, retire la película protectora de la pieza de acero inoxidable.**  
**Avant d'installer un composant, retirez le film protecteur de la pièce en acier inoxydable.**

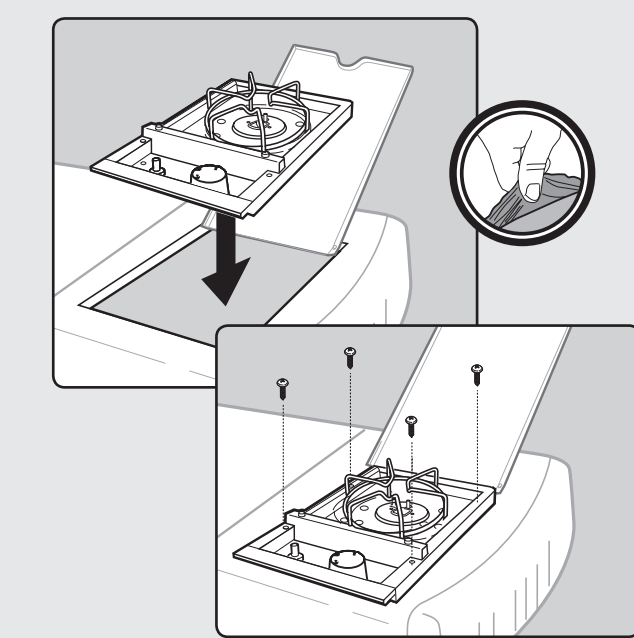



22 

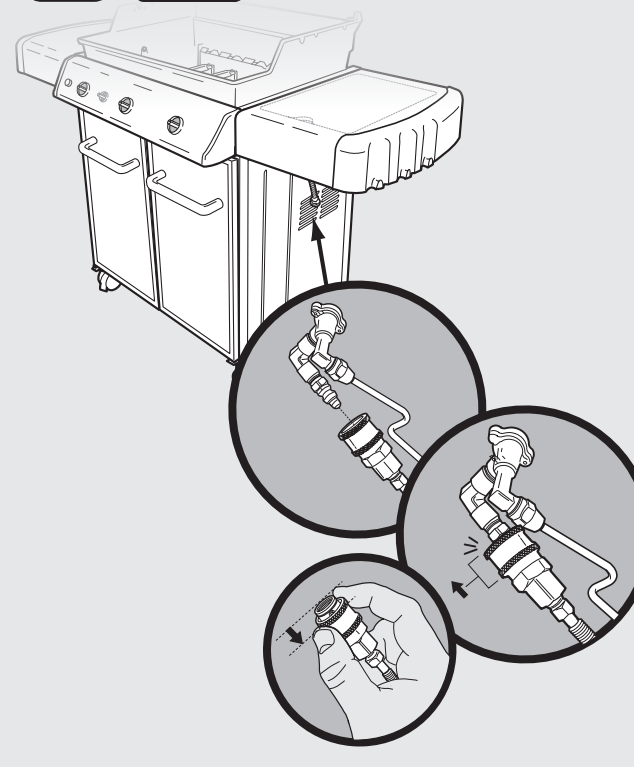
• To adjust door  
 • Para ajustar la puerta  
 • Pour ajuster la porte



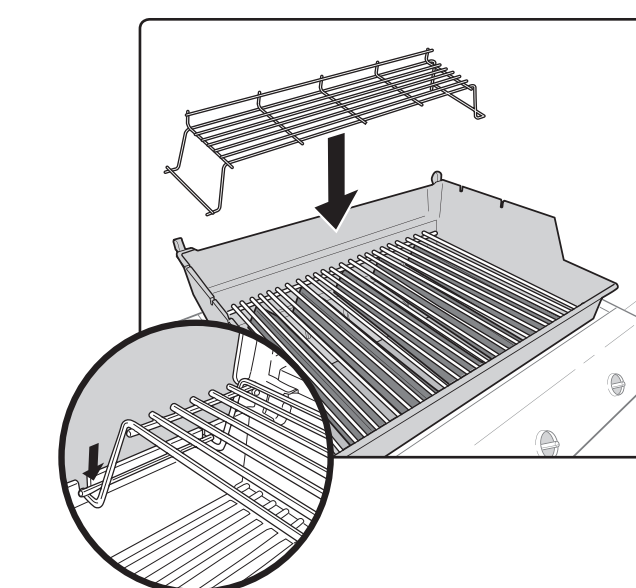
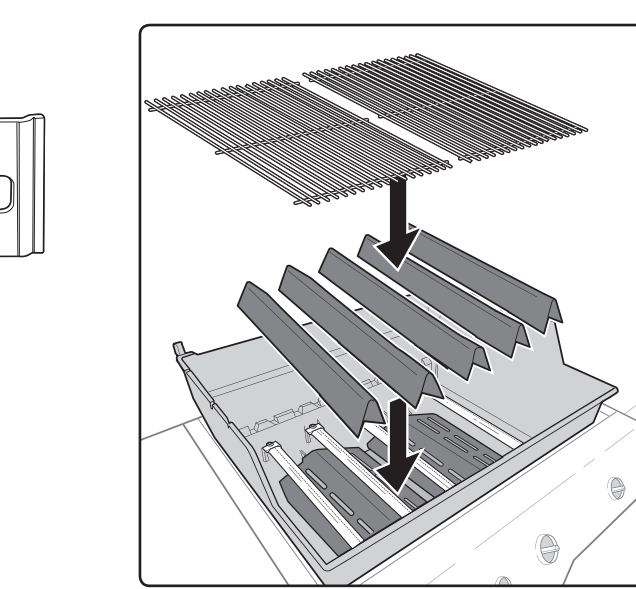
24 330 




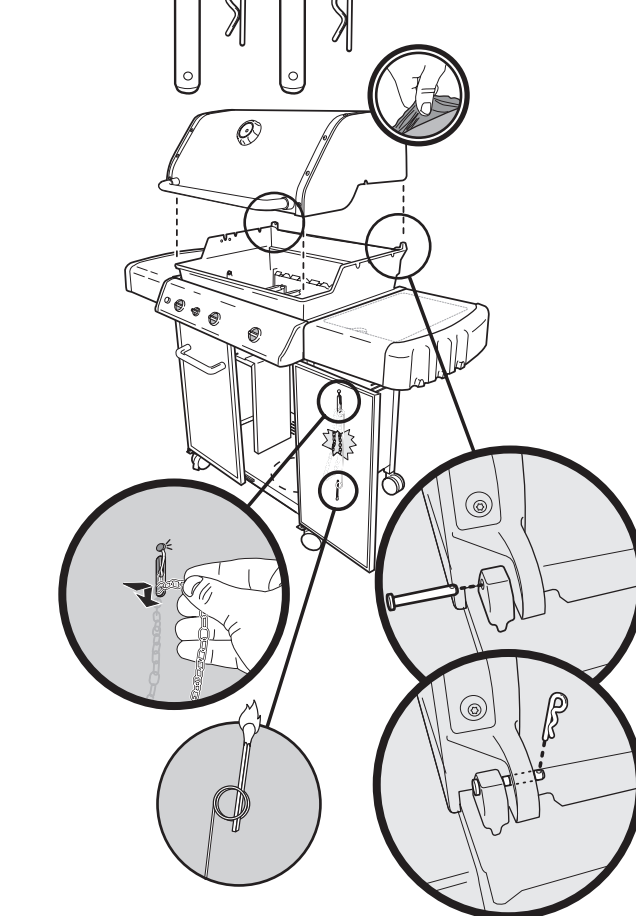
25 330 



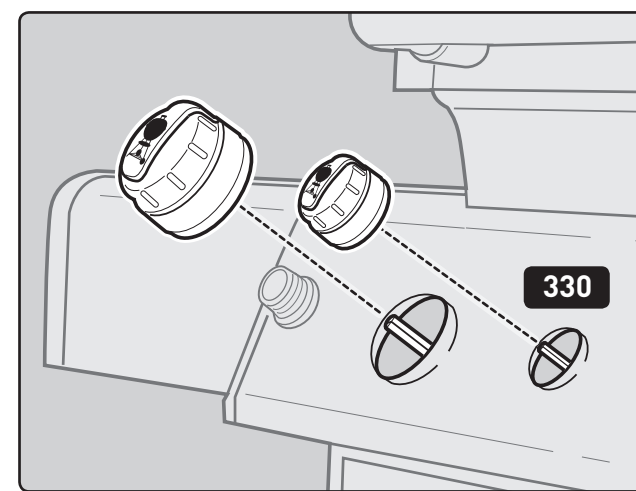
26 



27 



28 



**UNPACKING INSTRUCTIONS • INSTRUCCIONES DE DESEMPAQUE • INSTRUCTIONS POUR LE DEBALLAGE**

**Warming Rack - 1**  
 Rejilla para calentar - 1  
 Grille de maintien au chaud - 1

**Control Panel - 1**  
 Panel de control - 1  
 Panneau de commande - 1

**Right Frame Panel - 1**  
 Panel del bastidor derecho - 1  
 Panneau du châssis droit - 1

**Left Frame Panel - 1**  
 Panel del bastidor izquierdo - 1  
 Panneau du châssis gauche - 1

**Left Side Table - 1**  
 Mesa lateral izquierda - 1  
 Tablette latérale gauche - 1

**Wind Deflector - 1**  
 Deflector de viento - 1  
 Déflecteur de vent - 1

**Rear Frame Support - 1**  
 Soporte del bastidor posterior - 1  
 Support de châssis arrière - 1

**Front Frame Support - 1**  
 Soporte del bastidor delantero - 1  
 Support de châssis avant - 1

**Bottom Panel - 1**  
 Panel inferior - 1  
 Panneau inférieur - 1

**Back Panel - 1**  
 Panel posterior - 1  
 Panneau arrière - 1

**Cookbox Assembly - 1**  
 Ensemble de la caja de cocción - 1  
 Assemblage du boîtier de cuisson - 1

**Lid Assembly - 1**  
 Ensemble de la tapa - 1  
 Assemblage du couvercle - 1

**Side Burner Assembly - 1**  
 Ensemble del quemador lateral - 1  
 Assemblage du brûleur latéral - 1

**Slide Out Grease Tray - 1**  
 Bandeja deslizable de grasa - 1  
 Plateau amovible de récupération des graisses - 1

**Locking Caster - 2**  
 Rueda giratoria con bloqueo - 2  
 Roulette à verrouillage - 2

**Caster - 2**  
 Rueda giratoria - 2  
 Roulette - 2

**Catch-Pan Holder - 1**  
 Soporte del plato recolector - 1  
 Support pour égouttoir - 1

**Tank Scale - 1**  
 Báscula del tanque - 1  
 Graduation du réservoir - 1

**Heat Deflector - 2**  
 Deflector de calor - 2  
 Déflecteur de chaleur - 2

**Catch-Pan - 1**  
 Plato recolector - 1  
 Egouttoir - 1

**Disposable Drip Pan - 1**  
 Bandeja de goteo desechable - 1  
 Egouttoir jetable - 1

**Control Knob - 3**  
 Perilla de control - 3  
 Bouton de commande - 3

**Sear Station® Knob - 1**  
 Perilla de la estación para dorar Sear Station® - 1  
 Bouton Sear Station® - 1

**Door Handle - 2**  
 Asa de la puerta - 2  
 Poignée de la porte - 2

**Left Door Panel - 1**  
 Panel izquierdo de la puerta - 1  
 Panneau de la porte gauche - 1

**Right Door Panel - 1**  
 Panel derecho de la puerta - 1  
 Panneau de la porte droite - 1

**Matchstick Holder - 1**  
 Portacerillos - 1  
 Porte-allumette - 1

**Right Side Table - 1**  
 Mesa lateral derecha - 1  
 Tablette latérale droite - 1

**Side Burner Table - 1**  
 Mesa del quemador lateral - 1  
 Tablette du brûleur latéral - 1

**HARDWARE BAG**  
**BOLSA DE HERRAJES**  
**SAC DE QUINCAILLERIE**

**ASSEMBLY INSTRUCTIONS • INSTRUCCIONES DE ARMADO • INSTRUCTIONS POUR L'ASSEMBLAGE**

**TOOLS NEEDED:**  
**HERRAMIENTAS REQUERIDAS:**  
**OUTILS NECESSAIRES :**

**IMPORTANT: TO PROPERLY ALIGN FRAME AND DOORS, ASSEMBLE GRILL ON A FLAT AND LEVEL SURFACE.**  
**IMPORTANTE: PARA ALINEAR CORRECTAMENTE EL BASTIDOR Y LAS PUERTAS, ARME LA BARBACOA SOBRE UNA SUPERFICIE PLANA Y HORIZONTAL.**  
**IMPORTANT: POUR ALIGNER CORRECTEMENT LE CADRE ET LES PORTES, ASSEMBLEZ LE GRILL SUR UNE SURFACE PLANE ET A NIVEAU.**

