



FIUS0601G91

CE

EN

USE AND CARE

ES

EMPLEO Y MANUTENCION

FR

UTILISATION ET ENTRETIEN

2 AA batteries required (not included)
2 pilas AA de 1,5 voltios requiere (no incluida)
2 piles AA de 1,5 volt requise (non incluse)

DUCATI **12V**



Ducati Motor Holding S.p.A. and Ducati Corse official licensed product.

DUCATI
MONSTER

Model Number IGMCO007US

SEE VERBAL INSTRUCTIONS
AFTER THE PICTURES

VER LAS INSTRUCCIONES
DESPUÉS DE LOS DISEÑOS

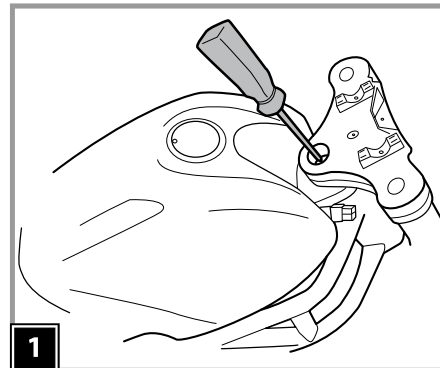
VOIR LES INSTRUCTIONS
APRÈS LES DESSINS

ASSEMBLY

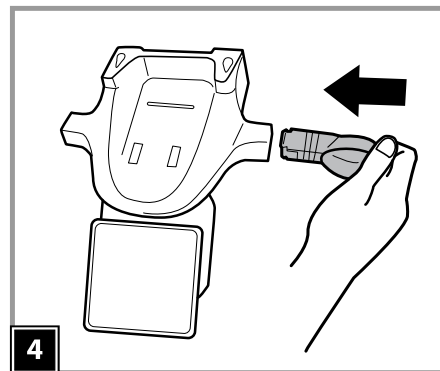
MONTAJE

MONTAGE

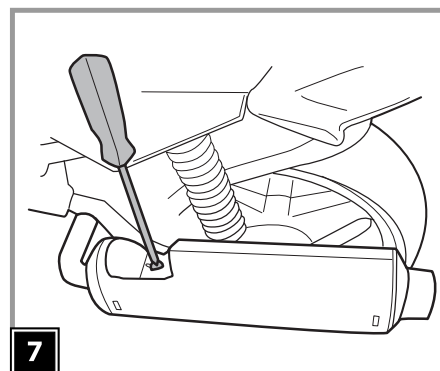
1



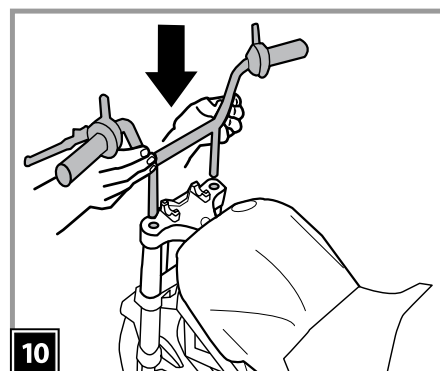
4



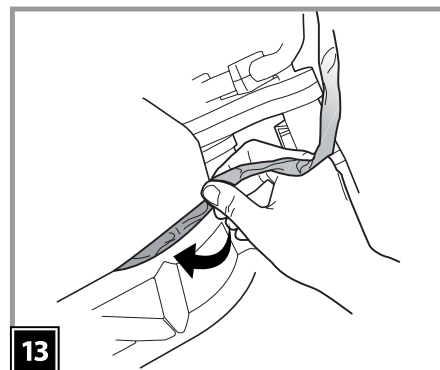
7



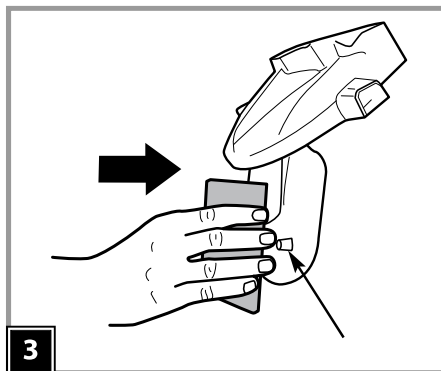
10



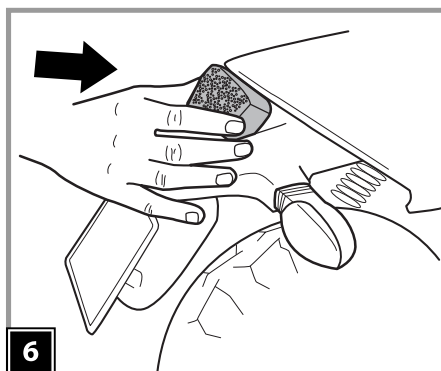
13



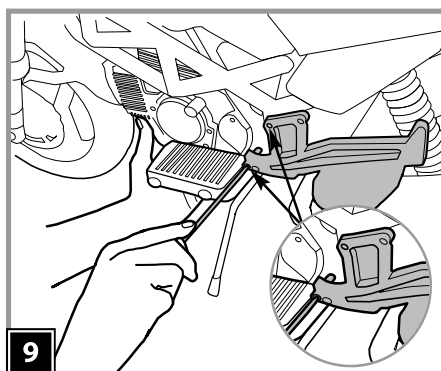
3



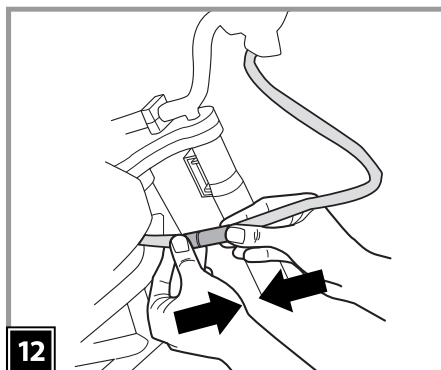
6



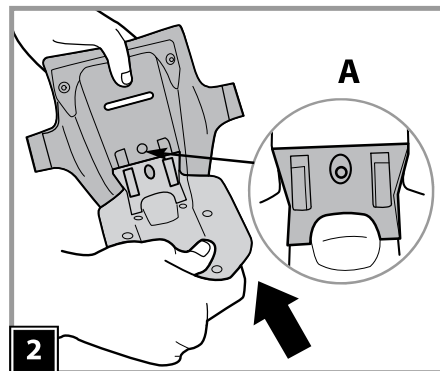
9



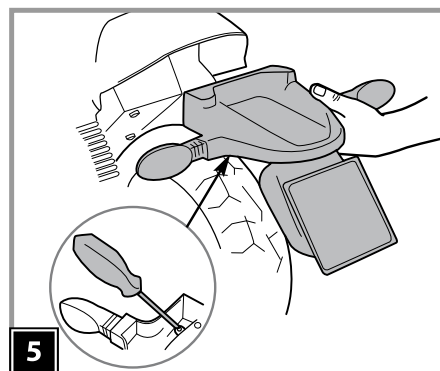
12



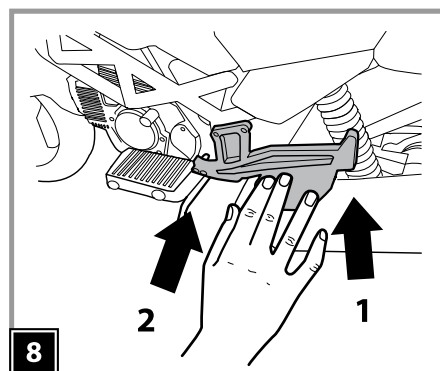
2



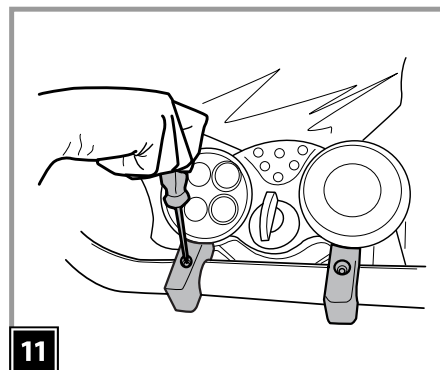
5

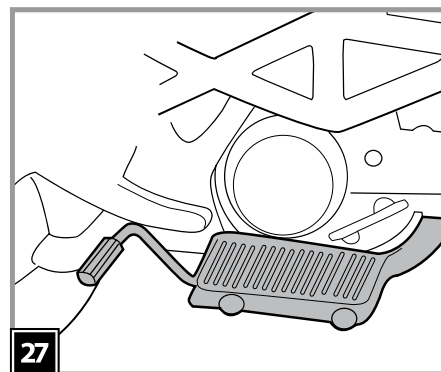
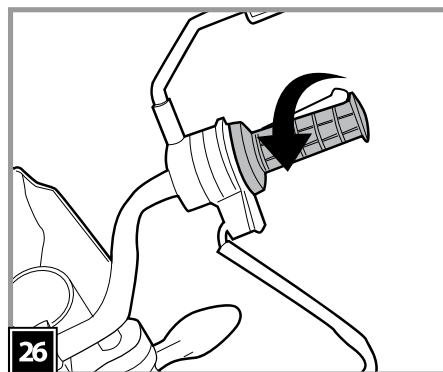
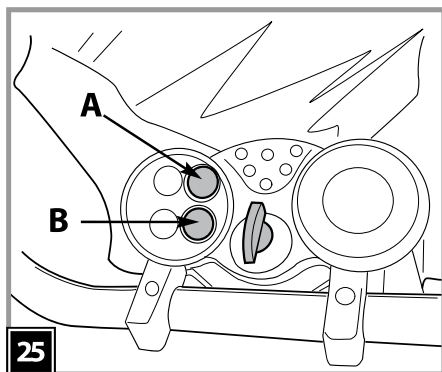
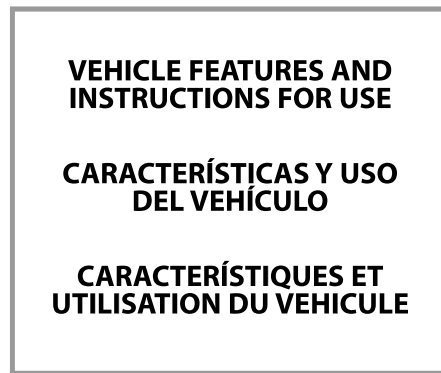
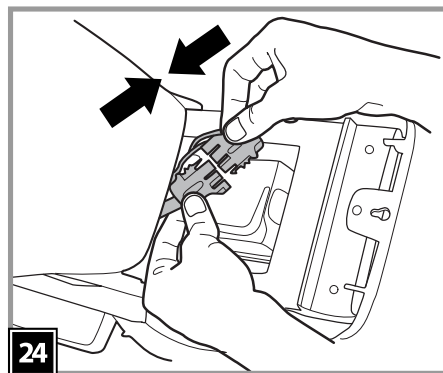
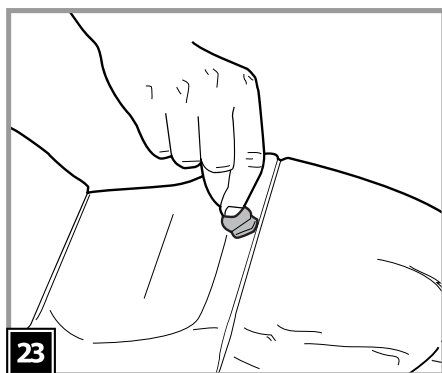
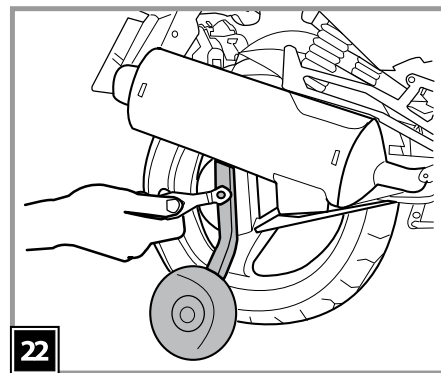
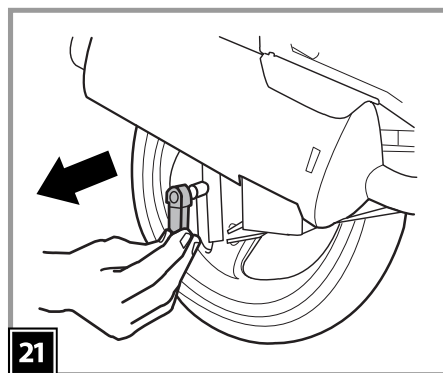
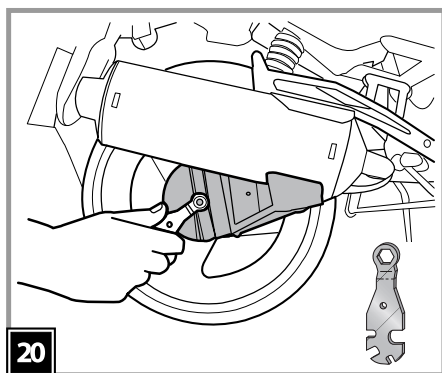
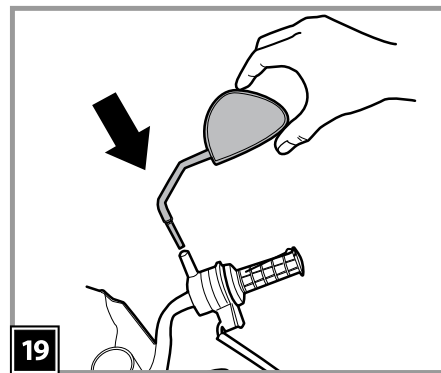
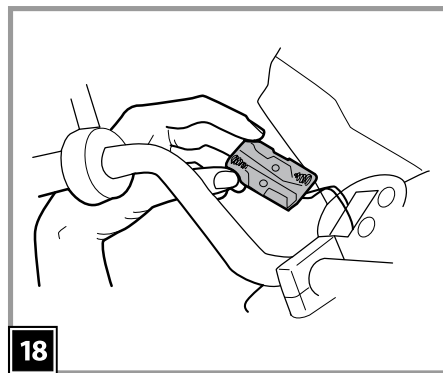
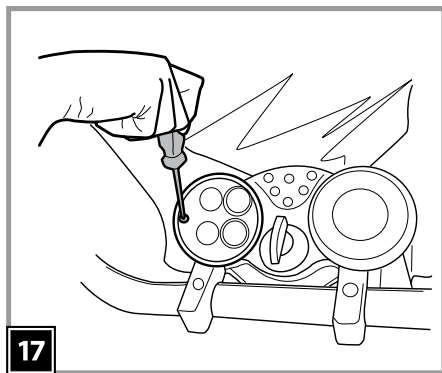
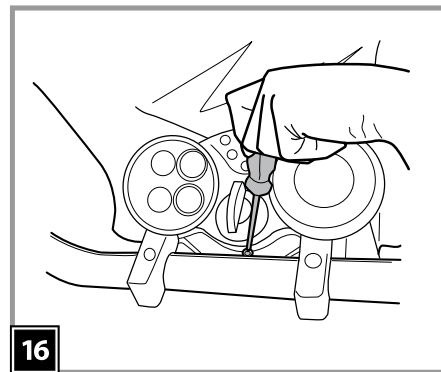
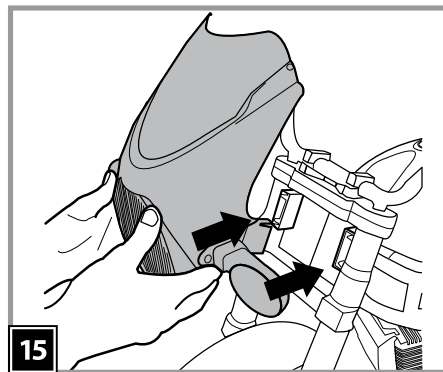
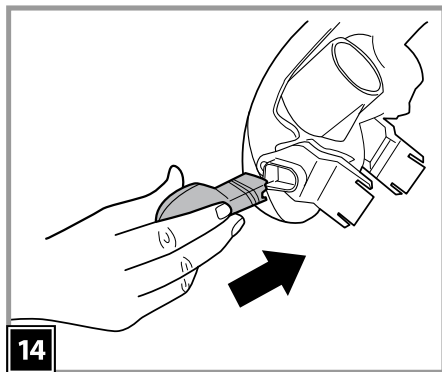


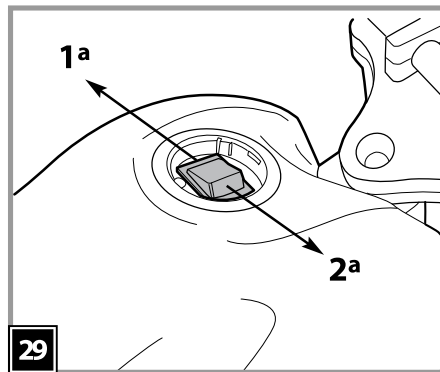
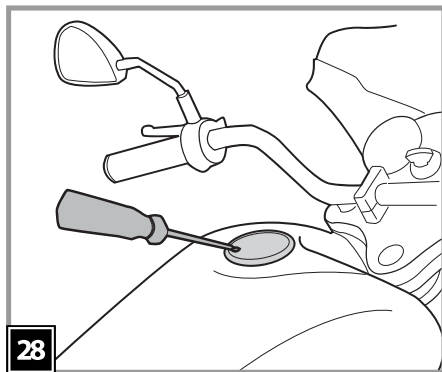
8



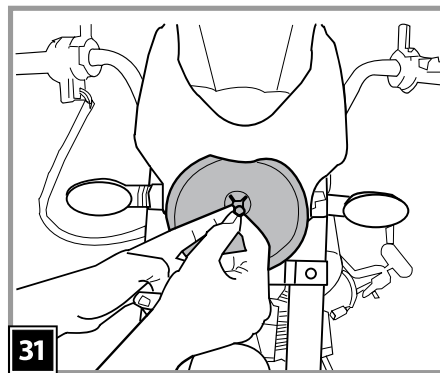
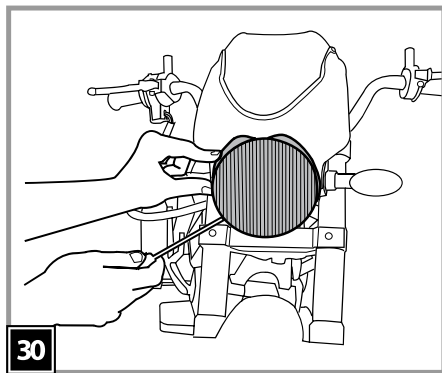
11



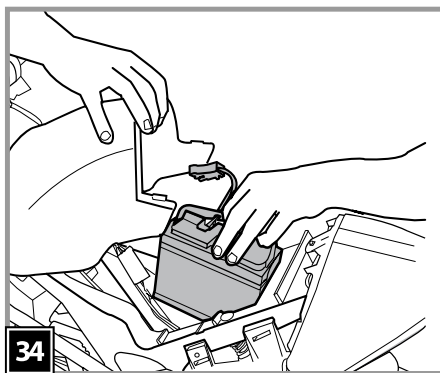
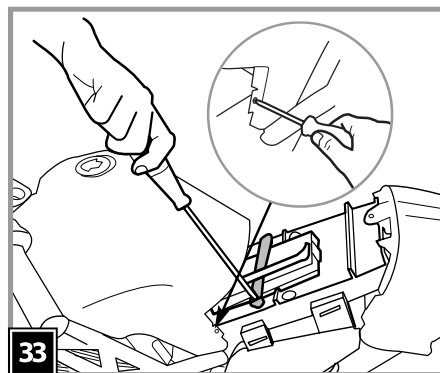
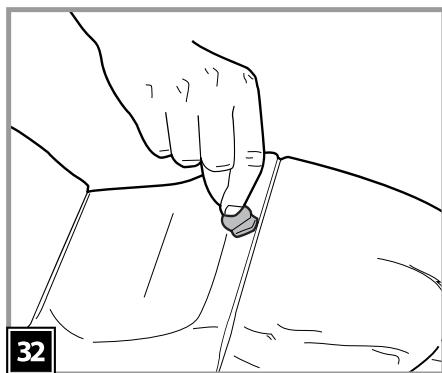




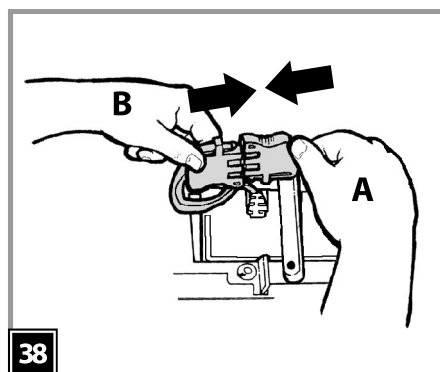
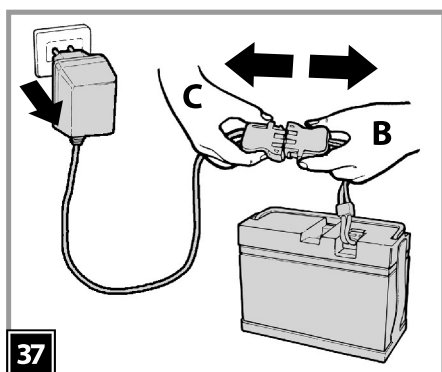
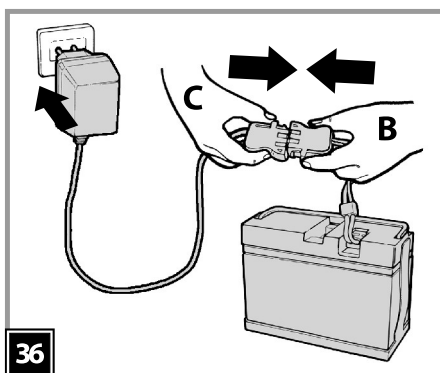
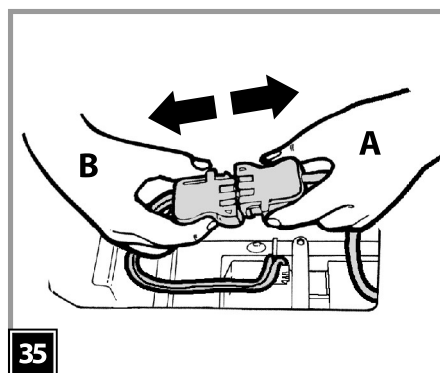
REPLACING THE LIGHT BULBS
SUSTITUCIÓN DE LAS BOMBILLAS
REPLACEMENT DES AMPOULES

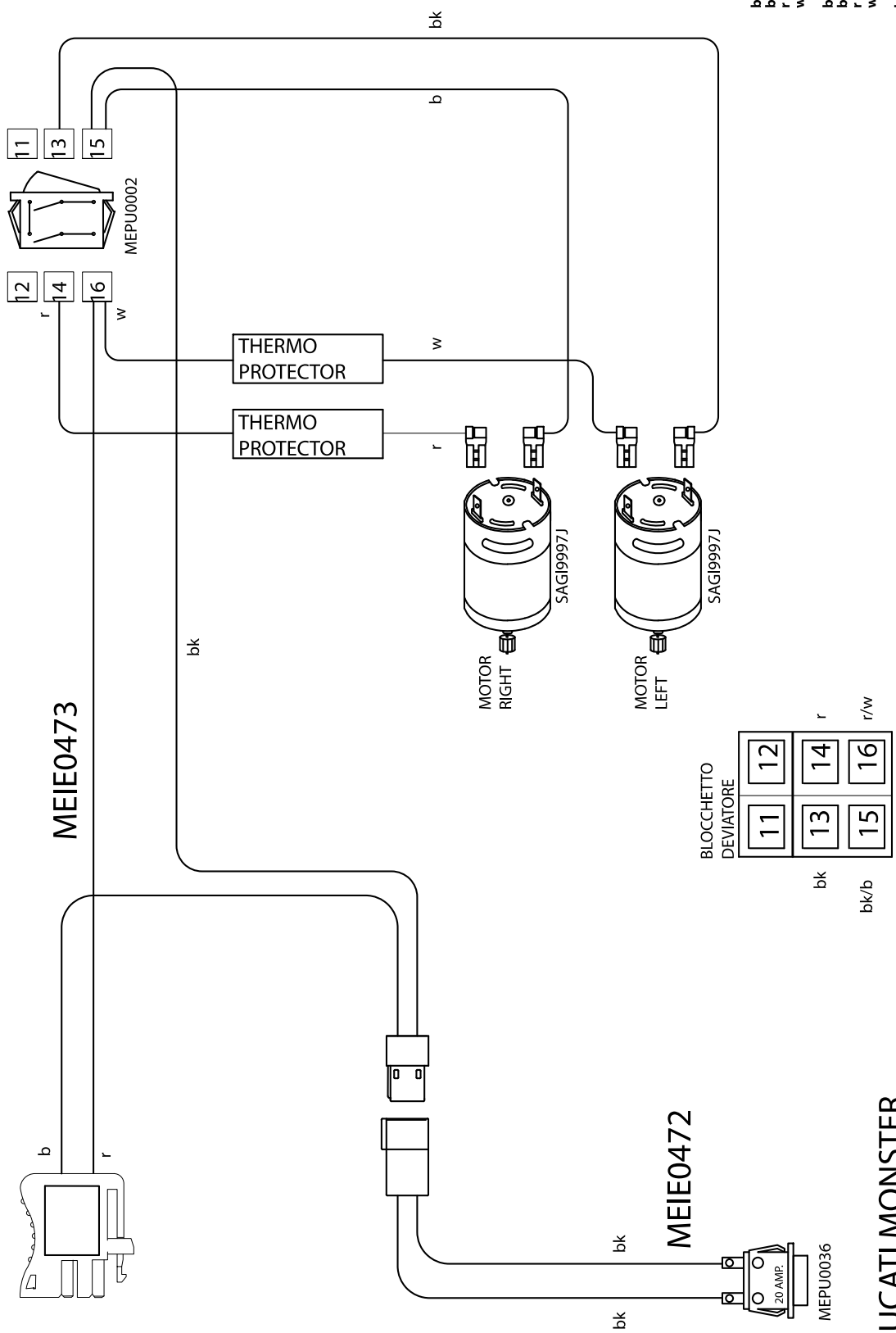


BATTERY REPLACEMENT
CAMBIO DE LA BATERÍA
REPLACEMENT DE LA BATTERIE

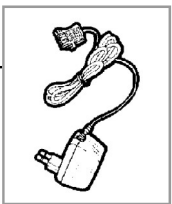


BATTERY RECHARGE
CARGA DE LA BATERÍA
CHARGE DE LA BATTERIE





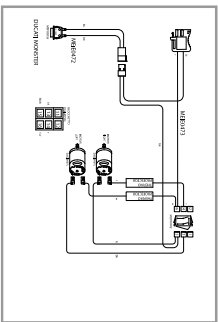
- b = blue
- bk = black
- r = red
- w = white
- b = azul
- bk = negro
- r = rojo
- w = blanco
- b = bleu
- bk = noir
- r = rouge
- w = blanc



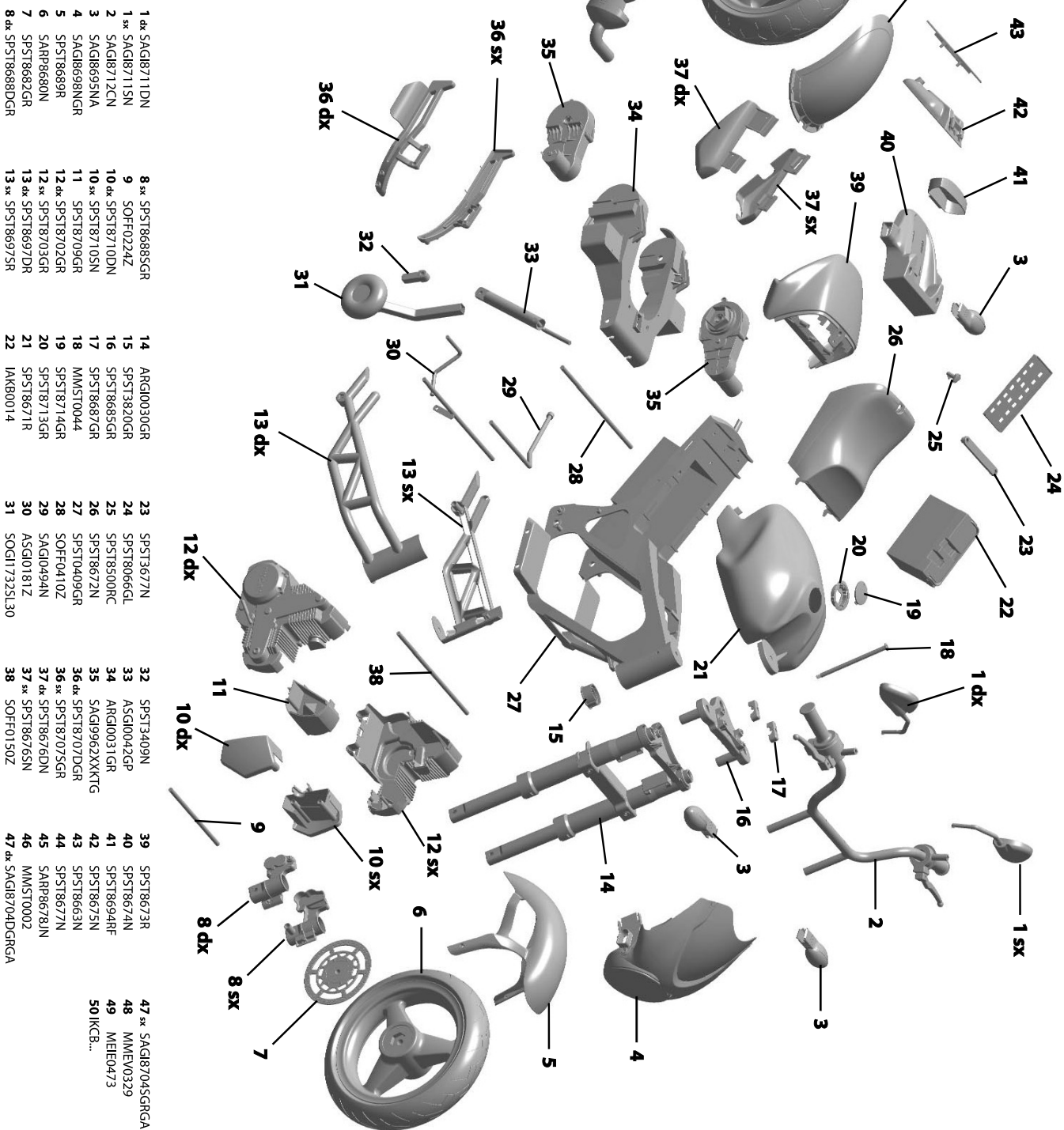
50



48



49



ENGLISH

• PEG PEREGO® thanks you for choosing this product. For over 50 years, PEG PEREGO has been taking children for an outing: first with its famous baby carriages and strollers, later with its pedal and battery operated toy vehicles.

• Read this instruction manual carefully to learn the use of the vehicle and to teach your child safe and enjoyable driving. Please keep this manual for use as a reference in the future.

• Our toys conform with the safety requirements provided by the Council of the EEC, of the T.U.V.; of the I.I.S.G. Istituto Italiano Sicurezza Giocattoli, and the U.S. Consumer Toy Safety Specification F963.

• Peg Perego reserves the right to modify or change its product. Price, literature, manufacturing processes or locations or any combination of the above mentioned entities may change at any time for any reason without notice with impunity.

Years 3-7 Weight capacity 75 lbs/34 kg

⚠ CAUTION:

ELECTRIC VEHICLE NOT RECOMMENDED FOR CHILDREN UNDER 3 YEARS OF AGE. AS WITH ALL ELECTRIC PRODUCTS, PRECAUTIONS SHOULD BE OBSERVED DURING HANDLING AND USE TO PREVENT ELECTRIC SHOCK. RECHARGER INCLUDED. 120 VOLTS, 60Hz, 30W INPUT, 12 VOLTS (DC) OUTPUT.

CUSTOMER SERVICE

PEG PEREGO offers after-sales services, directly or through a network of authorized service centers for repairs or replacement parts. See the back cover of this instruction manual for contact information.

ASSEMBLY INSTRUCTIONS

⚠ CAUTION:

ADULT ASSEMBLY REQUIRED. USE CARE WHEN UNPACKING AS COMPONENTS TO BE ASSEMBLED MAY POSE A SMALL PARTS/SHARP EDGE HAZARD.

ASSEMBLY

- 1 • Attention: check to make sure that the bolt on the front fork is securely fastened.
- 2 • Fasten the license plate holder to the bracket, slipping the two tabs into place and securing the peg. Detail A shows the peg correctly inserted.
- 3 • Press the two pegs to fasten the license plate to the bracket.
- 4 • Snap the turn signals into place on the license plate bracket, as shown in the figure.
- 5 • Place the newly assembled unit under the tailpiece. Line up the two braces on the tailpiece with the openings in the bracket, and tighten the two screws.
- 6 • Insert the taillight, holding the tab under the tailpiece. Push the taillight into place.
- 7 • To mount the exhaust pipes, place one on either side of the crossbar and screw them into place.
- 8 • To mount the footboards on either side of the motorcycle insert the rear part of them into the exhaust pipes, as shown in the figure. Insert the front part of the footboards into the sides of the frame.

- 9 • Fasten each footboard with the two supplied screws.
- 10 • Slip the handlebar into the fork.
- 11 • Position the two handlebar locks and fasten them with the supplied screws.
- 12 • Connect the accelerator plug to the system plug.
- 13 • Insert the cable into the slot, as shown in the figure.
- 14 • Snap the turn signals into place on the headlight unit.
- 15 • Make sure the dashboard is correctly placed over the steering unit, and slip the headlight unit all the way into the openings in the fork.
- 16 • Fasten the dashboard with the screw.
- 17 • Loosen the screw on the battery compartment cover, near the instrument panel on the dashboard.
- 18 • Pull out the battery holder and insert two 1.5V AA batteries (not supplied with the motorcycle), taking care to place the positive and negative poles correctly. Close the battery compartment cover and tighten the screw.
- 19 • Mount the two mirrors as shown in the figure, turning them to the correct position.
- 20 • Using the supplied tool, loosen the nuts on both sides of the rear wheel axle.
- 21 • Remove the spacers from both sides.
- 22 • Insert the training wheels and fasten with a washer and nut on each side. Tighten the training wheels. Attention: when removing the training wheels, remember to put the spacers back on.
- 23 • Open the seat fastener and pull the seat up. Attention: always close the seat after working inside the battery compartment.
- 24 • Connect the two plugs. Close the seat. The vehicle is ready for use.

VEHICLE FEATURES AND USE

- 25 • ELECTRONIC MODULE: To switch on the electronic module, turn the key clockwise. To blow the horn, press button A (top button) on the dashboard. To turn the headlight on, press button B (lower button).
We recommend turning the key off when not using the vehicle to avoid draining the battery.
- 26 • ACCELERATOR HANDLE: Turn the handle downwards to start the vehicle.
- 27 • BRAKE LEVER: Press the brake lever to stop the vehicle.
- 28 • HIGH SPEED: Loosen the screw-on fuel cap.
- 29 • Turn the switch towards the right to activate the second speed. Close by screwing the cap back on.

REPLACING LIGHT BULBS (2,5 volts)

- 30 • Use a screwdriver to pry the glass off the headlight.
- 31 • Gently pull the bulb out of the socket. Unscrew the burnt light bulb and replace it. Push the bulb back into the headlight. Snap the glass back onto the headlight.

BATTERY REPLACEMENT

- 32 • To replace the battery, loosen up the screws of the tank and unfasten the hook of the saddle. Then pull out the saddle.
- 33 • Loosen the screws on the battery clamp and disconnect the plugs.
- 34 • Lift the tank, pull out the old battery and replace it with the new one. Place the battery holder back to its place and fasten it in position with the 2 screws. Connect up the 2 plugs, then close the tank by tightening the 2 screws. Lower the saddle.

BATTERY RECHARGE

⚠ WARNING:

WARNING: BATTERY CHARGING AND ANY OTHER OPERATION ON THE ELECTRICAL SYSTEM MUST BE CARRIED OUT BY ADULTS ONLY. THE BATTERY CAN ALSO BE CHARGED WITHOUT REMOVING IT FROM THE VEHICLE.

- 35 • Disconnect vehicle plug A from battery plug B by pressing on the sides.
- 36 • Plug the battery charger into an electrical outlet, following the instructions that come with the battery charger. Connect plug B to plug C on the battery charger.
- 37 • When the battery is finished charging, disconnect the battery charger from the electrical outlet, then disconnect plug C from

plug B.

- 38 • Press plug B all the way into plug A. When finished working on the vehicle, always remember to close and lock the seat.

BATTERY MAINTENANCE AND SAFETY

Before riding, charge your batteries for 18 hours to initiate them. Failure to do this will result in permanent battery damage.

⚠ CAUTION:

Only adults should recharge batteries, never children. Never allow children to handle batteries.

Only use the batteries specified by the manufacturer. Only use the charger specified by the manufacturer.

Do not mix old and new batteries. Do not mix alkaline, standard (carbon-zinc), or rechargeable (nickel-cadmium) batteries.

CHARGING THE BATTERY

- Charge the batteries no longer than 24 hours, following the instructions enclosed with the battery charger.
- Charge the battery, as the vehicle shows low power, in this way you will avoid damage to the battery.
- If you don't use your vehicle for a long period of time unplug the battery from the main wire harness of the vehicle. Remember to charge the battery at least every three months.
- Never charge the battery upside down.
- Do not forget batteries during charging! Check them periodically.
- Never use a replacement recharger or batteries unless they are approved by PEG PEREGO.
- Batteries are sealed and maintenance free.
- Battery polarity must be observed when connecting battery to wiring.

⚠ WARNING:

- BATTERIES CONTAIN TOXIC AND CORROSIVE SUBSTANCES. DO NOT TAMPER WITH THEM.
- Batteries contain an acid-based electrolyte.
- Do not make direct contact between battery terminals, as this can cause an explosion or fire.
- Charging produces explosive gases. Charge batteries in a well ventilated area away from sources of heat and flammable materials.
- Exhausted batteries are to be removed from the vehicle.
- Do not place the batteries near clothing to avoid damage.

IF A LEAK DEVELOPS

Shield your eyes. Avoid direct contact with the electrolyte, protect your hands.

Place battery in a plastic bag and follow directions listed below.

IF ELECTROLYTE COMES IN CONTACT WITH SKIN OR CLOTHING

Flush with cool water for at least 15 minutes.

See a physician at once.

IF ELECTROLYTE IS INJECTED

Give tap water, milk of magnesia or egg whites at once.

Do not induce vomiting.

See a physician at once.

DISPOSAL OF BATTERIES

Help protect the environment!

Do not throw used batteries in your regular, household trash.

Dispose of the old batteries in an approved dumping station; contact your local environmental protection agency office for further information.



⚠ CAUTION AA1,5V BATTERY

The insertion of batteries must only be carried out or supervised by adults. Do not let children play with the batteries.

- The batteries should be replaced by an adult.
- Use only the type of battery specified by the manufacturer.
- Respect the polarity +/-
- Do not allow the batteries to be in contact with metal parts (risk of fire or explosion).
- Always remove the batteries if the toy is not in use for a long period.
- Never attempt to charge batteries that are not rechargeable.
- Remove dead batteries from the toy.
- Dispose of dead batteries into appropriate containers provided for their recycling.



VEHICLE MAINTENANCE AND SAFETY

This product conforms to EN 71 and conforms to EN 50088 safety standard for electric toys.

This vehicle is not intended for use on streets, around traffic or parked

cars.

This product meets and/or exceeds all ASTM TOY SAFETY STANDARDS, including F 963, Consumer Toy Safety Specifications.

MAINTENANCE AND CARE

- Regularly check the conditions of the vehicle, particularly the electrical system, the plug connections, the covering caps and the charger. In case of fault, do not try to use the vehicle and the charger. For repair use only original PEG PEREGO's spare parts.
- PEG PEREGO assumes no liability if the electrical system is tampered with.
- Do not leave vehicle or batteries near sources of heat such as radiators, stoves, fireplaces, etc.
- Protect vehicle from water, rain, snow, etc.
- It can operate on grass, dirt or hard surfaces.
- When operating in overload conditions, such as soft deep sand, mud or rough uneven terrain, the overload circuit breaker will automatically disconnect the power. After 10 or more seconds, the circuit breaker will automatically reset, however you must eliminate overload conditions to resume normal driving.
- Periodically lubricate (with a light weight oil) moving parts, such as wheel bearings, steering linkages, where they rotate or touch one another.
- The vehicle's surface can be cleaned with a damp cloth. Do not use abrasive cleaners. The cleaning must be carried out by adults only.
- Never disassemble the vehicle mechanisms or motor unless authorized by PEG PEREGO.

Conforms to EN 50088
Rechargeable battery 12V 8Ah
sealed lead-acid battery.
Two 140W motors

SAFETY

⚠ WARNING:

- To reduce the risk of injury, adult supervision is required. Never use in roadways, near motor vehicles, on or near steep inclines or steps, swimming pools or other bodies of water; always wear shoes, and never allow more than 1 rider.
- Surfaces that are appropriate for safe use: grass, hard surfaces, moderate slopes.
- Not suitable for children under the age of 36 months. The small pieces could be swallowed or inhaled.
- Never use the vehicle on steep

slopes or near steps or stairs. This vehicle is not suitable for use on public highways.

- Children should always wear shoes when riding in or driving a ride-in/ride-on vehicle.
- The use of a certified bicycle helmet is strongly recommended.
- Do not allow children to place their hands, feet or any part of their body, clothing or other articles near the moving parts while vehicle is in operation.
- Do not allow the electrical components, motors, wiring, switches of your motorized vehicle to become wet and never wash it with a hose.
- Never use gasoline or other flammable substances near the vehicle.
- The vehicle is designed just for one child: never allow more than one rider.

RULES FOR SAFE DRIVING

DON'T STOP THE FUN: always have freshly charged, back-up batteries on hand.

For your child's safety: please read and follow all instructions below before operating.

- **ATTENTION:**
Check the fastening studs to be sure they are tight.

2nd SPEED

Initially we suggest using only the 1st speed and the reverse gear. Before moving into 2nd speed be sure that the child has become familiar with operating the vehicle.

- **1ST SPEED** slow speed (beginner drivers):
With both hands on the handlebars, press down on the accelerator pedal; the vehicle goes forward at 2 1/2 mph.
- **2ND SPEED** fast speed (experienced drivers):
With both hands on the handlebars, press down on the accelerator pedal; the vehicle goes forward at 5 mph.

- **BRAKE:**
To stop, remove foot from accelerator and press down on the brake pedal.

Teach your child the proper use of this vehicle for a safe and fun play time.

- Before starting be sure that the way is free from people and objects.
- Drive with both hands on the

handlebar and keep your eyes on the road at all times.

- Stop in time to avoid accidents.
- Use the 2nd speed only after your child has the maturity and the reflexes to operate the vehicle safely.

⚠ CAUTION:

- In first gear, the vehicle has a differential effect like real cars; on smooth terrain and with one child, the two wheels may turn at different speeds, resulting in possible sliding/deceleration.
- When operating in overload conditions, such as soft deep sand, mud or rough uneven terrain, the overload circuit breaker will automatically disconnect the power. After 10 or more seconds, the circuit breaker will automatically reset, however you must eliminate overload conditions to resume normal driving.

PROBLEMS?

IF THE VEHICLE DOES NOT OPERATE?

- Check that all the plugs are properly connected.
- Check electrical switches. Replace if necessary.
- Check that the battery is connected to the electrical system.

IF THERE IS NO POWER?

- Fully recharge the batteries. If the problem persists, check with an Authorized PEG PEREGO Service Center.

ESPAÑOL

•PEG PEREGO® le agradece que haya elegido este producto.
Hace más de 50 años que PEG PEREGO lleva a pasear a los niños: al nacer, con sus famosos cochecitos y coches de paseo, después con los fantásticos vehículos de juguete a pedal y con batería.

•Lea atentamente este manual de instrucciones para familiarizarse con el uso del modelo y enseñar a su niño un modo de conducir correcto, seguro y divertido. Conserve después el manual para cualquier consulta futura.

•Nuestros juguetes respetan los requisitos de seguridad previstos por el Consejo de la EEC, por el "U.S. Consumer Toy Safety Specification F963" y están aprobados por el T.U.V. y por el I.I.S.G. Istituto Italiano Sicurezza Giocattoli.

•Peg Perego se reserva el derecho de aportar modificaciones a sus productos. El precio, el manual adjunto, los procesos o lugares de fabricación o una combinación de estos factores pueden provocar cambios sin previo aviso y sin que ello suponga ninguna obligación para Peg Perego.

Años 3-7 Peso transportable 75 lbs/34 kg

⚠ PRECAUTION:

LOS VEHICULOS ELECTRICOS NO SON RECOMENDABLE PARA NIÑOS MENORES DE 3 AÑOS. COMO TODOS LOS PRODUCTOS ELECTRICOS, CUANDO SE ESTA MANEJANDO OBSERVE LAS MEDIDAS DE PRECAUCION PARA PREVENIR UN CHOQUE ELECTRICO. EL CARGADOR ESTA INCLUIDO. 120 VOLTS, 60Hz, 30W DE ENTRADA, 12 VOLTS (DC) DE SALIDA.

SERVICIO DE ASISTENCIA

PEG PEREGO ofrece un servicio de asistencia post-venta, directamente o a través de una red de centros de asistencia técnica autorizados, para eventuales reparaciones o sustituciones y venta de recambios originales. Para contactar con los centros de asistencia vea la cubierta trasera de este manual de instrucción para información del contacto.

INSTRUCCIONES DE MONTAJE

⚠ PRECAUTION:

REQUIERE MONTAJE DE UN ADULTO. ALGUNOS COMPONENTES AL SER ENSAMBLADOS PODRÍAN TENER PARTES PEQUEÑAS/RIESGO POR BORDES CONTANTES.

MONTAJE

- 1 • Atención: controlar que el pivote de la horquilla delantera esté bien apretado.
- 2 • Montar el porta-matricula en su soporte, metiendo las dos lengüetas hasta que encaje la espiga. El detalle A muestra la espiga encajada.
- 3 • Meter la matrícula en el porta-matricula presionando las 2 espigas.
- 4 • Meter a presión los intermitentes en el soporte del porta-matricula, como muestra la figura.
- 5 • Poner el grupo que se acaba de montar debajo del elemento de protección encima de la rueda. Poner los 2 tornillos de manera que coincidan los dos casquillos del elemento de

protección encima de la rueda con los alojamientos del soporte.

- 6 • Meter el faro trasero controlando que la lengüeta del faro quede debajo del elemento de protección encima de la rueda y empujar el faro en su alojamiento.
- 7 • Para montar el tubo de escape apoyar este último sobre la horquilla y apretar. Repetir la operación por el lado opuesto con el tubo de escape restante.
- 8 • Montar el reposapiés metiendo la parte trasera en el tubo de escape, como muestra la figura, y la delantera en el bastidor lateral.
- 9 • Fijar el reposapiés con los 2 tornillos que se entregan en dotación. Repetir la operación por la parte opuesta con el reposapiés restante.
- 10 • Meter el manillar en la horquilla.
- 11 • Poner los dos sujetamanillar y fijarlos con los tornillos que se entregan en dotación.
- 12 • Conectar la clavija del manillar-acelerador con la clavija de la instalación.
- 13 • Meter el cable en su alojamiento como muestra la figura.
- 14 • Meter los intermitentes a presión en el grupo del faro delantero.
- 15 • Prestando atención en que el salpicadero quede encima del bloque de la dirección, meter el grupo del faro delantero en las ranuras de la horquilla hasta que se enganche completamente.
- 16 • Fijar el salpicadero con el tornillo.
- 17 • Destornillar la tapa del compartimento de las pilas (lado de los botones) que está en el salpicadero.
- 18 • Extraer el portapilas y meter 2 pilas de tipo AA de 1,5 V -no van incluidas- en su alojamiento respetando la polaridad adecuada. Luego volver a cerrar la tapa del compartimento de las pilas y volverla a atornillar.
- 19 • Montar los 2 espejos como muestra la figura y girarlos para que queden correctamente colocados.
- 20 • Con la herramienta que se entrega desenroscar las tuercas del eje de la rueda trasera por ambas partes.
- 21 • Sacar los distanciadores por ambas partes.
- 22 • Meter las ruedas estabilizadoras; aplicar una arandela y luego una tuerca en cada parte; volver a enroscarlas. Atención: cuando quite las ruedas estabilizadoras no olvide volver a poner los distanciadores.
- 23 • Destornillar el enganche del asiento y sacarlo. Atención: volver a cerrar siempre el asiento después de haber terminado las operaciones dentro del compartimento de la batería.
- 24 • Conectar las 2 clavijas y volver a cerrar el asiento. El vehículo ya está listo para usar.

CARACTERÍSTICAS Y USO DEL VEHÍCULO

25 • MÓDULO ELECTRÓNICO: para accionar el módulo electrónico, girar la llave en el sentido de las agujas del reloj. Para accionar la bocina, presionar en el salpicadero el botón de arriba A. Para accionar el faro delantero, presionar en el salpicadero el botón de abajo B.

Se aconseja girar la llave en el sentido contrario a las agujas del reloj después de haberlo utilizado para evitar que se descargue la pila.

- 26 • MANILLA DEL ACELERADOR: girar la manilla hacia abajo para que funcione el vehículo.
- 27 • PEDAL DEL FRENO: presionando el pedal del freno el vehículo se para.
- 28 • SEGUNDA VELOCIDAD: quitar el tapón del depósito.
- 29 • Presionar el pulsante hacia la derecha para accionar la segunda velocidad. Cerrar enroscando la tapa.

CÓMO SE CAMBIAN LAS BOMBILLAS (2,5 V)

- 30 • Quitar el cristalito del faro delantero haciendo presión con una herramienta.
- 31 • Tirar ligeramente de la bombilla para que salga el portabombilla. Cambiar la bombilla fundida desenroscándola del portabombilla. Después de haberla cambiado, empujarla hacia dentro hasta que quede en la posición inicial. Volver a poner a presión el cristalito.

CAMBIO DE LA BATERÍA

- 32 • Para cambiar la batería, quitar los 2 tornillos del depósito y el gancho del asiento. Proceder extrayendo el asiento.
- 33 • Destornillar el sujetabatería y desconectar las clavijas.
- 34 • Levantar el depósito, sacar la batería y cambiarla. Volver a poner y a atornillar el sujetabatería con los 2 tornillos. Conectar las 2 clavijas, cerrar el depósito atornillando los 2 tornillos y volver a cerrar el asiento.

This document was created with Win2PDF available at <http://www.win2pdf.com>.
The unregistered version of Win2PDF is for evaluation or non-commercial use only.
This page will not be added after purchasing Win2PDF.