

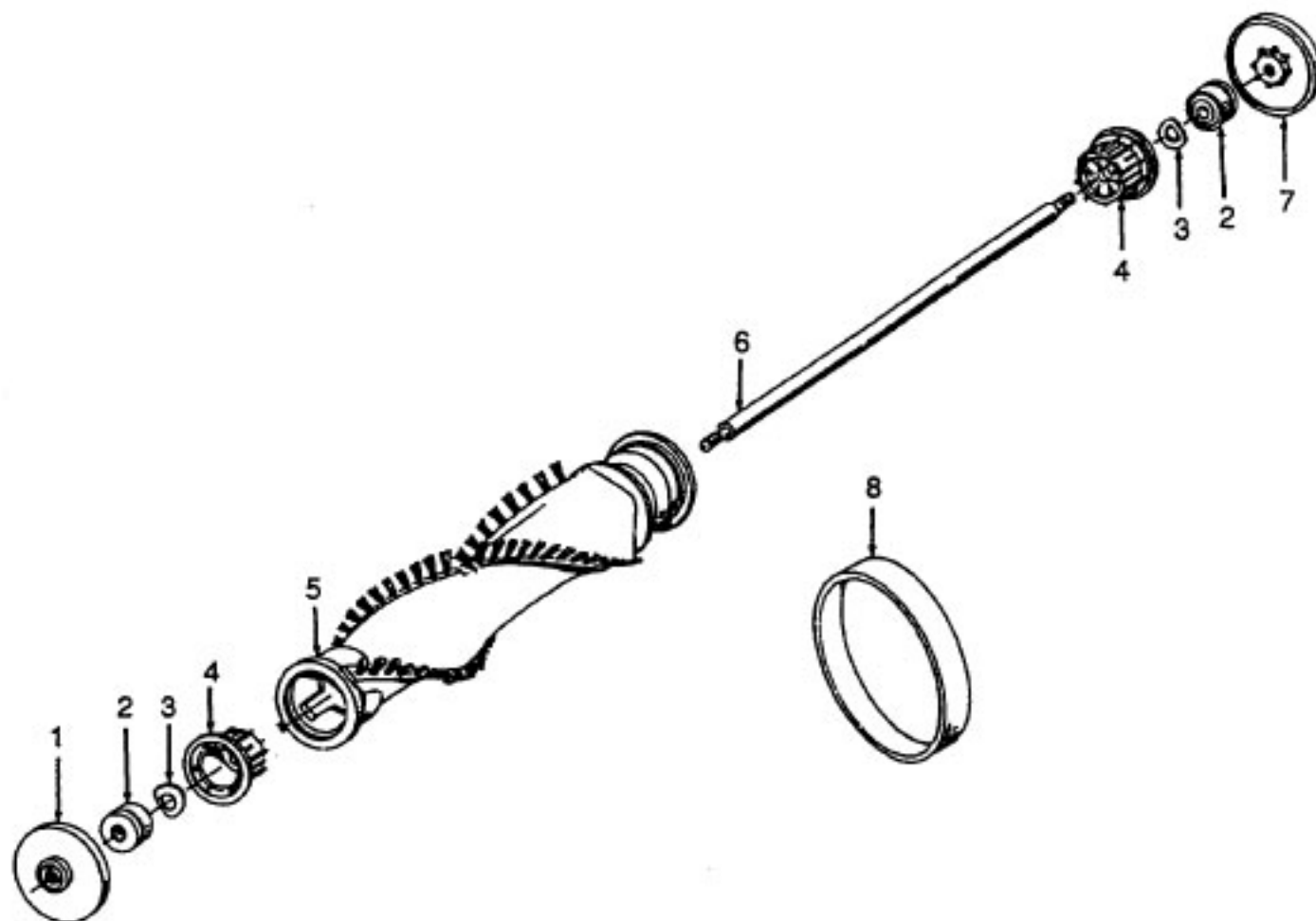
Ref. No.	Part No.	Description	Ref. No.	Part No.	Description
1	48414013	Agitator Assem. (Molded) - See Detail (P - 282)	41	32288011	Hose Adapter
2		Agitator Housing - See Detail (P - 288)	42	38638057	Hose Connector
3	46383315	Attach. Cord - 35 FT.	43	21447025	Screw - Self-Tapping (2)
4	43143096	Actuator Bar Assem.	44	21563001	Machine Screw (2)
5	38511027	Pivot Bearing	45	21447019	Screw - Self-Tapping (2)
6	160079AW	Nut - Special	46	32175011	Motor Mount
7	160058	Bolt - Special	47	32156007	Seal Ring
8	160059	Washer	48	32155006	Mount Ring
9	21641623	Nut	49	21447012	Screw - Self-Tapping
10	12227	Insulated Terminal (3)	50	43576074	Motor Assem. - See Detail - (P - 188)
11	42253057	Front Housing Assem. - AAY - Incl. It. 23 & 27-30	51	38657010	Top Fill Tube
12	37254080	Front Cover w/o Nameplates - (Ref. It. 14 & 68)	52	36425008	Jacket Bottom
13	48111006	Lens - Shield Assem.	53	39442040	Cord Wrap - Lower
14	51638046	Front Cover Nameplate (Dirt Finder Headlight)	54	37195097	Motor Cover - AAY
15	37257003	Tool Door	55	21447013	Screw - Self-Tapping (3)
16	38511002	Bearing	56	27617103	Connector (2)
17	38617024	Crevice Tool	57	27479307	Cable Tie
18	38614029	Furniture Nozzle	58	37257092	Rear Cover
19	43414145	Dusting Brush	59	27313101	Dirt Finder Lamp (2)
20	37951006	Housing Cover	60	47176001	Lamp Socket Assem. (2)
21	35123001	Front Cover Insert	61	43677368	Jacket Assem. - Comp. - AAY
22	43211010	Control Cable & Tube	62	52115192	Housing Nameplate
23	168278AY	Washer			
24		Handle Assem. - See Detail - (P - 263)			
25	N/A	Tape			
26	31735007	Insulating Tube	19555		Spring Washer
27	35152008	Handle Mounting Bracket - Front Half	36172002		Hose Rack - Clip
28	36913016	Handle Insulator Support	21447003		Screw Self - Tapping (Retainer)
29	35152011	Handle Mounting Bracket - Rear Half	34124011		Retainer
30	21254008	Rivet	34161008		Light Barrier - Fiber (Frt. Hsg.)
31	36433090	Hose Rack	170975		Wrench - Special (This is a 1/2" 12 point, deep offset box wrench used on Item 7, Part 160058 Bolt, in conjunction with the adjustment of the control cable.)
32	21447217	Screw - Self-Tapping (2)			
33	38634078	Extension Tube (2)			
34	43434017	Cleaning Tool Hose			
35	38334002	Spring			
36	43677370	Outer Bag - AAY			
37	36425037	Jacket Support	56511368		Owner Manual
38	36131050	Jacket Retainer (2)	58152097		Carton
39	4010001A	Throw Away Bag (3 Pk.)	58211013		Lower Support
40	36116014	Hose Connector Collar	58249004		Front Support
			58268002		Top Handle Support
			58341010		Handle Support

ITEMS NOT ILLUSTRATED

PACKAGING MATERIAL

Agitator

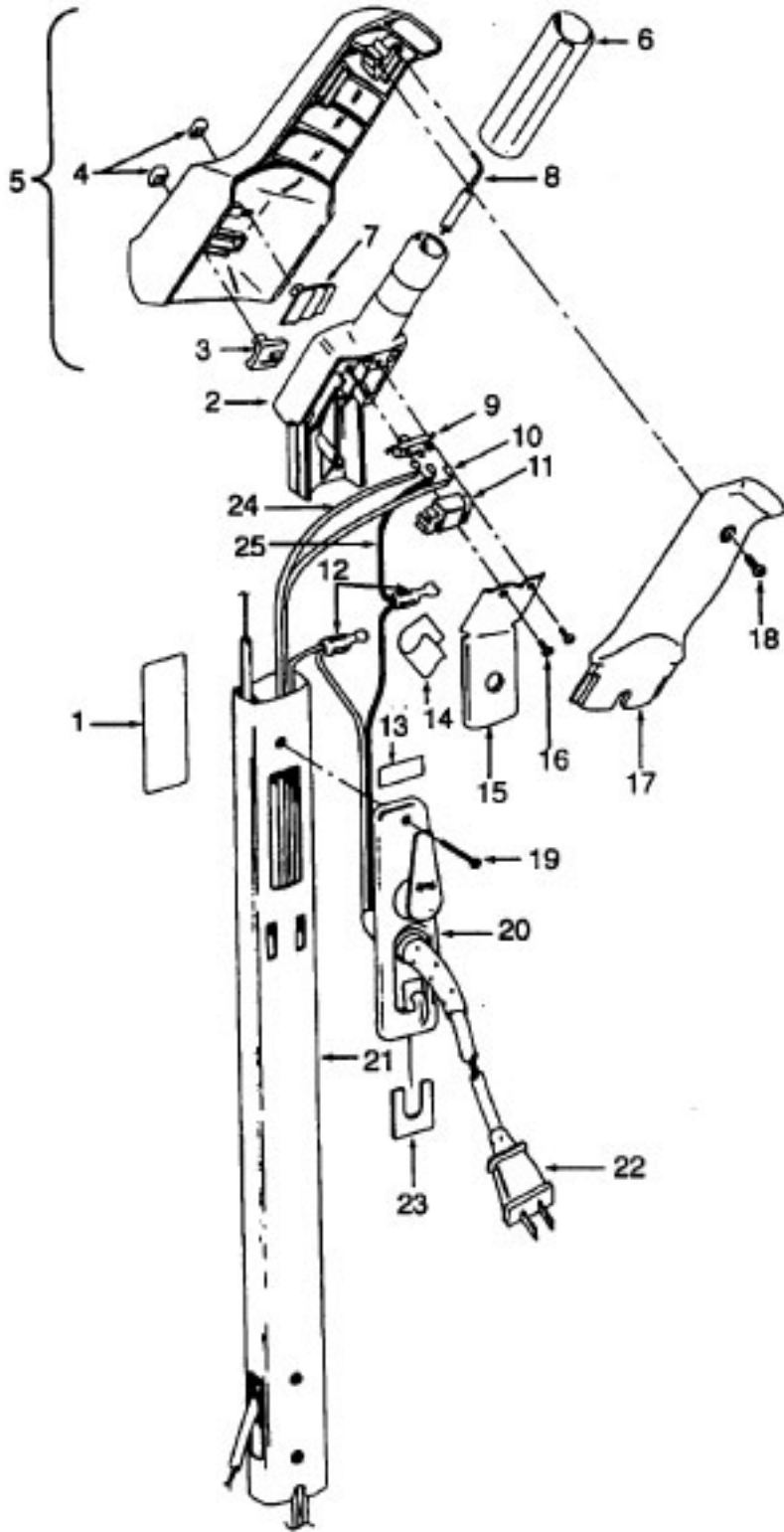
Models U3715-930, U3725-930, U3729-930, U3737-930
U3745-930, U6311-930, U6317-930, U6318-930 U6319-930,
U6321-930, U6335-930, U6323-930, U6329-930



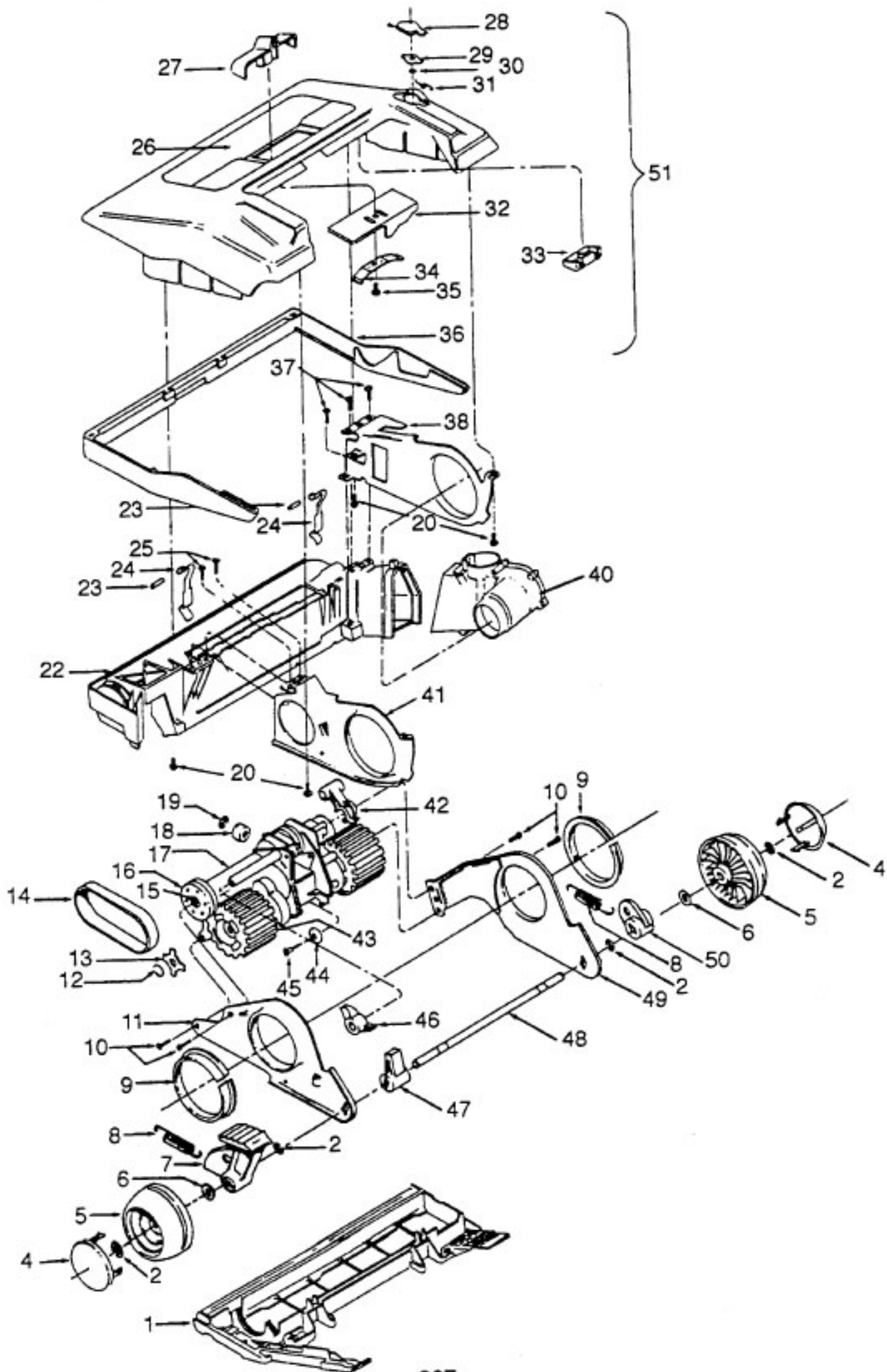
Ref. No.	Part No.	Description
	48414013	Agitator Assem. Comp. - AG
1	41435018	Thread Guard
2	43267002	Agitator Bearing Assem. (2)
3	21347003	Conical Washer (2)
4	36422022	Agitator End (2)
5	48414004	Agitator Body
6	160070	Agitator Shaft
7	41435021	Thread Guard - Knurled
8	38528008	Agitator Belt

PowerMAX - Handle

**Models U3715-930, U3721-910, U3721-930, U3725-930
U3729-910, U3729-930, U3737-910, U3737-930, U3745-910,
U3745-930**



Ref. No.	Part No.	Description
1	51669050	Handle Tube Nameplate - U3721-91 0
	51669051	Handle Tube Nameplate - U3729-91 0
	51669052	Handle Tube Nameplate - U3737-91 0
	51669053	Handle Tube Nameplate - U3745-91 0
	51669059	Handle Tube Nameplate - U3729-930, U3737-930, U3745-930
2	36957012	Handle Support
3	36142001	Drive Control Pin
4	38421021	Switch Button (2)
5	48663153	Handle Grip - Assem. - Upper - Incl. Items 3,4,7
6	31754002	Handle Sleeve
7	38421042	Switch Actuator
8	43211010	Control Cable
	66661203	Control Cable Tube
9	28179021	Switch
10	27666702	Terminal (3)
11	37258082	Terminal Shield
12	12227	Insulated Terminal
13	51869001	Warning Label
14	NA	Tape
15	34777017	Handle Support Plate
16	21447218	Screw - Self-Tapping (2)
17	39458033	Handle Grip - Lower Half
18	21447041	Screw - Self-Tapping
19	21447122	Screw - Self-Tapping
20	42262063	Handle Cover/Cord Release
21	39467071	Handle Tube w/o Nameplate & Label (Ref. It's. 1 & 13) - U3729-91 0, U3729-930, U3737-91 0, U3737-930, U3745-91 0, U3745-930
	39467078	Handle Tube w/o Nameplate & Label (Ref. It's. 1 & 13) - U3715-930, U3721-910, U3721-930, U3725-930
22	46383315	Cord
23	34253010	Cord Protection Retainer
24	46513008	Lead Wire (Switch/Motor)
25	46143064	Lead Wire (Switch/Conn./ Attach. Cord)



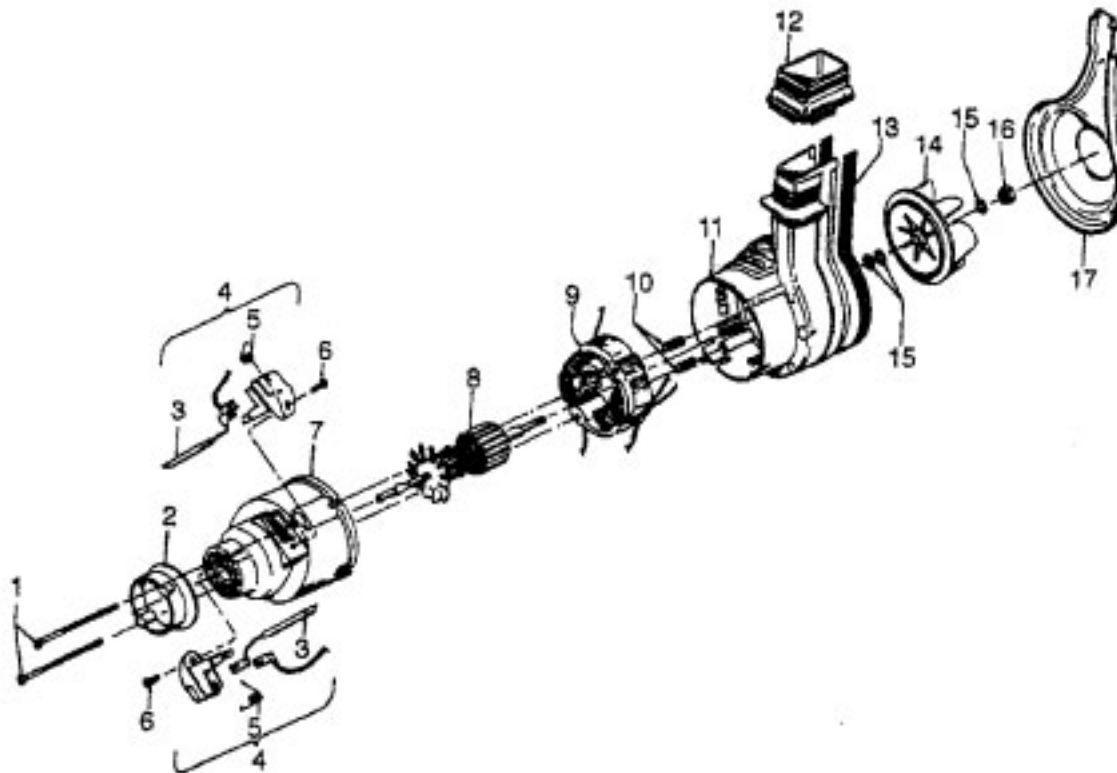
PowerMAX - Agitator Housing

Models U3715-930, U3725-930

Ref. No.	Part No.	Description	Ref. No.	Part No.	Description
1	37245087	Bottom Plate (Use with Molded Agitator)	28	37257174	Air Intake Assm. - ABC - U3715-930 (incl. It.'s 29,30)
2	13730	Lock Ring (4)		37257165	Air Intake Assm. - AAY - U3725-930 (incl. It.'s 29,30)
3	N/A				
4	37912013	Wheel Cover (2)	29	38784057	Seal
5	38522029	Rear Wheel (2)	30	21362006	Speed Nut
6	21312772	Washer (2)	31	38351016	Spring
7	38452087	Handle Release Lever - LH	32	38563015	Cam
8	38335014	Spring (2)	33	35131001	Hood Support
9	32155004	Bearing (2)	34	34751002	Detent Spring
10	17001FW	Screw - Self-Tapping	35	21447203	Screw - Self-Tapping
11	35476012	Frame - LH	36	36235082	Furniture Guard
12	160014	Retaining Ring	37	21447203	Screw - Self-Tapping (3)
13	160040AY	Keylock	38	35476027	Agitator Housing Bracket - RH
14	160147AG	Belt	39	N/A	
15	160031	Nut (P.D. Unit/Pulley)	40	43486005	Duct Assm.
16	38537001	Drive Pulley	41	35476016	Agitator Housing Bracket - LH
17	43124013	Power Drive Unit (Inc. items 10, 12(2), 13(2), 15, 16, 18, 19, 42, 43(2), 44, 45, 49)	42	38562013	Lifter - RH
18	31142014	Roller	43	163340AG	Drive Wheel
19	163699	Retaining Ring	44	32761003	Wheel
20	21447014	Screw - Self-Tapping (4)	45	21479782	Screw
21	N/A		46	38562010	Lifter - LH
22	42246064	Agitator Housing Assm.	47	38452048	Handle Release
23	31522016	Agitator Clip Pin (2)	48	32547002	Rear Axle
24	34788001	Agitator Clip (2)	49	41967004	Frame Assm. - RH
25	21447203	Screw - Self-Tapping	50	36131018	Spring Retainer
26	52115195	Hood Nameplate	51	42252331	Hood Assm. w/o Nameplate - U3715-930 (Ref. It. 26) - Incl. It.'s 27-36
27	38421084	Nozzle Adj. Lever - ABC - U3715-930		42252343	Hood Assm. w/o Nameplate - U3725-930 (Ref. It. 26) - Incl. It. 27-36
	38421080	Nozzle Adj. Lever - AAY - U3725-930			

Motor

Models U3315, U3315-070, U3317, U3319-9, U3319-970, U3321, U3323, U3329, U3331, U3335, U3341-900, U3715-930, U3721-910, U3721-930, U3725-930, U3729-910, U3729-930, U3737-910, U3737-930, U3745-910, U3745-930



Ref. No.	Part No.	Description
	43578074	Motor Assem. Comp.
1	21479573	Screw - Self Tapping (2)
2	32162003	Motor Mount
3	47315010	Brush & Terminal Assem. (2)
4	47318008	Brush Carrier Assem. (2)
5	38353004	Spring (2)
6	21479302	Screw - Self Tapping (2)
7	42193004	Motor Housing Assem.
8	44765065	Armature Assem. Comp.
9	45317027	Field Assem. Comp.
10	12854	Spring
11	43588001	Fan Chamber Assem.
12	38785002	Seal
13	54821001	Tape
14	38755003	Fan
15	166563	Washer (3)
16	33426001	Nut
17	38736015	Fan Cover Assem.