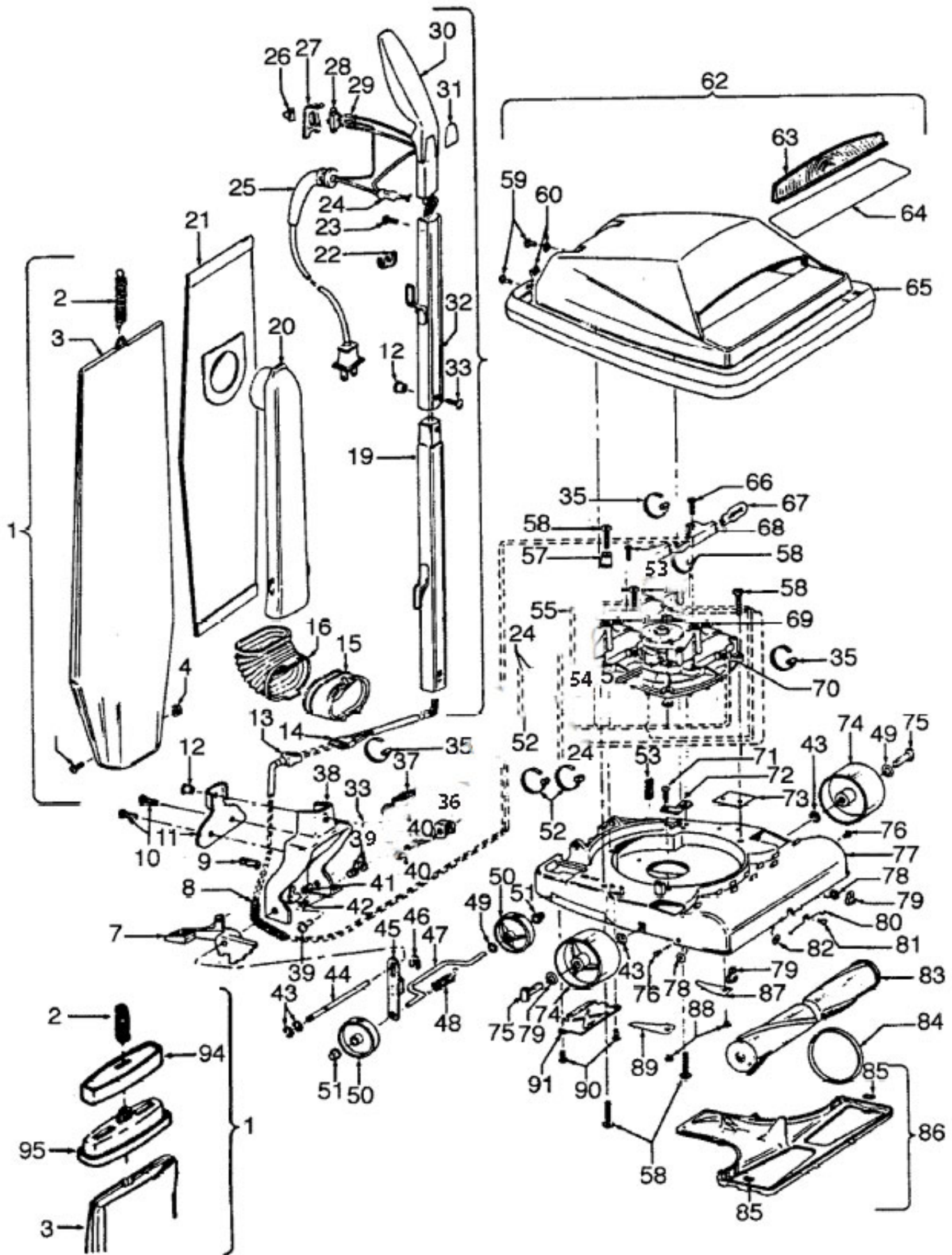


Available Replacement Parts for HOOVER U4497-9

| | |
|----------------------------|--|
| H-4010001A | VACUUM BAG OEM HOOVER 3 PACK |
| H-43267002 | AGITATOR BEARING ASM |
| H-49258 | ROUND CONVERTIBLE/DECADE BELT FOR HOOVER |
| K-109289 | BULB |
| H-43414064 | DUSTING BRUSH (ONE PEICE) |
| HR-5000 | EXTENSION TUBE |

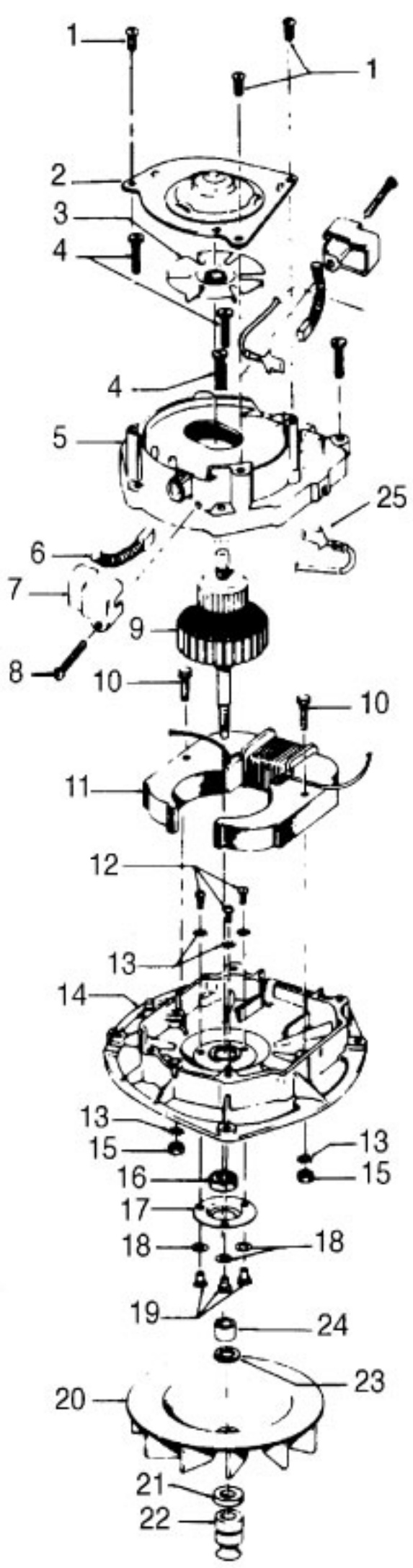


Model Number: U4497-9
BOM/Serial #: U4497-9
Graphic Title: HANDLE, MAINBODY, OUTERBAG, HOOD

| Image | Key | Part Number | Description | Substitution | Qty. |
|-------|-----|-------------|-----------------------------------|--------------|------|
| 1 | 1 | 43678333 | OUTER BAG COMP-DECAD | | 1 |
| 1 | 1 | 43678325 | OUTER BAG COMPL-U449 | | 1 |
| 1 | 2 | 38336014 | SUPPORT SPRING | | 1 |
| 1 | 3 | 43686020 | OUTER BAG - U4497-9 | | 1 |
| 1 | 3 | 43677322 | OUTER BAG-COM-TOP FI | | 1 |
| 1 | 4 | 015854EF | NUT | | 1 |
| 1 | 5 | 21765159 | SCREW | | 1 |
| 1 | 7 | 38452051 | NOZ ADJ LEVER-AG-4 P | | 1 |
| 1 | 8 | 38313023 | MOTOR LEAD SPRING | | 1 |
| 1 | 9 | 39442030 | CORD CLIP-AAP-U4519 | | 1 |
| 1 | 10 | 21465312 | SCREW-SELF TAPPING | | 2 |
| 1 | 11 | 34777012 | BAIL COVER PLATE-AY | | 1 |
| 1 | 12 | 32277008 | HANDLE CLAMP NUT | | 2 |
| 1 | 13 | 46522008 | CAP HOUSING/TUBING A | | 1 |
| 1 | 14 | 46526012 | HANDLE SOCKET ASSM C | | 1 |
| 1 | 15 | 41424011 | BAG FLANGE W/SEALANT | | 1 |
| 1 | 16 | 38673001 | BELLOWS - AG | | 1 |
| 1 | 19 | 48631162 | HANDLE-LOWER-AAP-U44 | | 1 |
| 1 | 19 | 48631021 | HANDLE-LOWER HALF-KS | | 1 |
| 1 | 20 | 38657004 | TOP FILL TUBE | | 1 |
| 1 | 21 | 4010001A | TOP FILL UPR BAG - 3PK | | 1 |
| 1 | 22 | 39442001 | BAG SUPPORT - JM | | 1 |
| 1 | 23 | 166735EF | SCREW - S3005 | | 1 |
| 1 | 24 | 012227-- | TERMINALS-0513 | | 3 |
| 1 | 25 | 46363242 | ATTACHMENT CORD | | 1 |
| 1 | 26 | 38421012 | SWITCH BUTTON | | 1 |
| 1 | 27 | 37258015 | SWITCH COVER-KT-U415 | | 1 |
| 1 | 28 | 28179013 | SWITCH - U4219 | | 1 |
| 1 | 29 | 27666702 | TERMINAL | | 3 |
| 1 | 30 | 48663121 | HANDLE GRIP - KE - U | 39454060 | 1 |
| 1 | 30 | 39454060 | HANDLE GRIP ASSEM-CO | | 1 |
| 1 | 31 | 51663003 | HANDLE GRIP NAMEPLAT | | 1 |
| 1 | 31 | 52115149 | NAMEPLATE - U4505 | | 1 |
| 1 | 32 | 48631013 | HANDLE-UPPER HALF-KS | | 1 |
| 1 | 32 | 48631014 | HANDLE-UPPER-AAP-U44 | | 1 |

| Image | Key | Part Number | Description | Substitution | Qty. |
|-------|-----|-------------|------------------------|--------------|------|
| 1 | 33 | 21631301 | HANDLE CLAMP BOLT | | 2 |
| 1 | 34 | 48655125 | HANDLE ASSM COMP-AAP | | 1 |
| 1 | 35 | 27479307 | CABLE TIE | | 3 |
| 1 | 36 | 38456050 | HDL CONT LEVER | | 1 |
| 1 | 37 | 38426080 | FOOT PAD-AG -C1E03 | | 1 |
| 1 | 38 | 41416056 | BAIL ASSEMBLY - AAP | | 1 |
| 1 | 39 | 011735-- | HANDLE CONT ROL PIN | 12002663 | 1 |
| 1 | 40 | 047450AY | PIVOT PIN | | 1 |
| 1 | 41 | 048409FW | SPRING | | 1 |
| 1 | 42 | 019907-- | BAG FLANGE CLAMP LEVER | | 1 |
| 1 | 43 | 013730-- | LOCK RING | | 4 |
| 1 | 44 | 161509AY | BAIL SHAFT | | 1 |
| 1 | 45 | 43263005 | CAM FOLLOWER-PLASTIC | | 1 |
| 1 | 46 | 34252005 | YOKE | | 1 |
| 1 | 47 | 33152003 | REAR WHEEL SHAFT | | 1 |
| 1 | 48 | 161513-- | SPRING | | 1 |
| 1 | 49 | 21312772 | WASHER | | 3 |
| 1 | 50 | 38521016 | REAR WHEEL-AG | | 2 |
| 1 | 51 | 32182001 | WHEEL RETAINER | | 2 |
| 1 | 52 | 27479307 | CABLE TIE | | 2 |
| 1 | 53 | 012559FW | SPRING-1060 | | 1 |
| 1 | 54 | 012227-- | TERMINALS-0513 | | 1 |
| 1 | 55 | 34287022 | MOTOR BAFFLE-U4383 | | 1 |
| 1 | 57 | 34312011 | RETAINER | | 1 |
| 1 | 58 | 21447020 | SCREW | | 6 |
| 1 | 59 | 12997AW- | RIVET | 012997AW | 2 |
| 1 | 60 | 168278AY | WASHER | | 2 |
| 1 | 62 | 42251308 | HOOD ASSEM-AAM-U4497 | | 1 |
| 1 | 62 | 42251306 | HOOD ASSEMBLY - HR - | | 1 |
| 1 | 63 | 39383086 | LENS-C1K01 | | 1 |
| 1 | 64 | 52115139 | NAMEPLATE - U4453-9 | | 1 |
| 1 | 64 | 52115148 | NAMEPLATE - U4497-9 | | 1 |
| 1 | 65 | 168497JM | FURNITURE GUARD-U4P1 | | 1 |
| 1 | 65 | 36231137 | FURNITURE GUARD-AAP- | | 1 |
| 1 | 66 | 017001FW | SCREW | | 1 |
| 1 | 67 | 27313101 | LAMP | | 1 |
| 1 | 68 | 36912004 | LAMP SOCKET-L.V. | | 1 |
| 1 | 69 | 045517-- | WIRE HOLDER | | 1 |

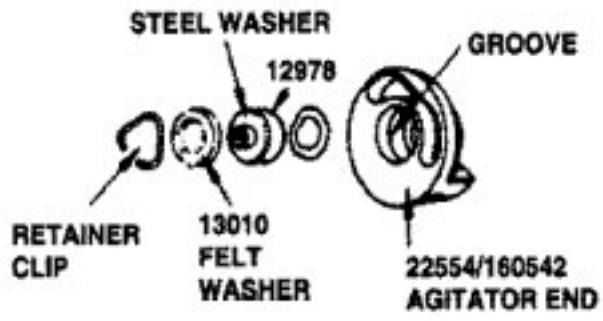
| Image | Key | Part Number | Description | Substitution | Qty. |
|-------|-----|-------------|---------------------------------|-----------------|------|
| 1 | 70 | 43574183 | MOTOR ASSEM. COMPLET | | 1 |
| 1 | 71 | 21447003 | SCREW | | 1 |
| 1 | 72 | 34665007 | PIVOT PIN RETAINER | | 1 |
| 1 | 73 | 34311003 | VENT ENCLOSURE | | 1 |
| 1 | 74 | 38522013 | CARRIER WHEEL-AG | | 2 |
| 1 | 75 | 047457AY | FRONTWHEEL SHAFT | | 2 |
| 1 | 76 | 048422-- | RIVET | | 2 |
| 1 | 77 | 42242230 | MAIN BODY ASSM-KE-U4 | | 1 |
| 1 | 77 | 42242225 | MAIN BODY ASSEM - AG | | 1 |
| 1 | 78 | 21312781 | SUPPORT WASHER-UPRIG | | 2 |
| 1 | 79 | 34784021 | AGITATOR RETAINING S | | 2 |
| 1 | 80 | 012138FW | BOTTOM PLATE SPRING | | 1 |
| 1 | 81 | 012503EF | RIVET-SEMI TUBULAR | | 1 |
| 1 | 82 | 21312703 | WASHER | | 1 |
| 1 | 83 | 41435005 | AGITATOR ASSEM COMP- | 48414003 | 1 |
| 1 | 84 | 44783AG- | BELT | 44788AG | 1 |
| 1 | 85 | 34111001 | SUPPORT PAD | | 2 |
| 1 | 86 | 42246008 | BOTTOM PLATE COMPLET | | 1 |
| 1 | 86 | 37245081 | BOTTOM PLATE - PLAST | | 1 |
| 1 | 87 | 36153006 | LATCH-C1K01 | | 1 |
| 1 | 88 | 21447203 | SCREW-S2095/97/99 | | 2 |
| 1 | 89 | 36153006 | LATCH-C1K01 | | 1 |
| 1 | 90 | 21447009 | SCREW | | 2 |
| 1 | 91 | 35434040 | AXLE/BAG FLANGE RETAINER | | 1 |
| 1 | 93 | 45533AY- | SCREW | | 1 |
| 1 | 94 | 37959057 | BAG COVER KE U44 | | 1 |
| 1 | 95 | 37959095 | HANGER-U3721/29 | | 1 |
| 1 | 96 | 58366012 | REAR SUPPORT - U4391 | | 1 |
| 1 | 96 | 56511132 | OWNER MANUAL - U4303 | | 1 |
| 1 | 96 | 56511295 | OWNER MANUAL - U4497 | | 1 |
| 1 | 96 | 58343025 | FRONT SUPPORT-C1067 | | 1 |



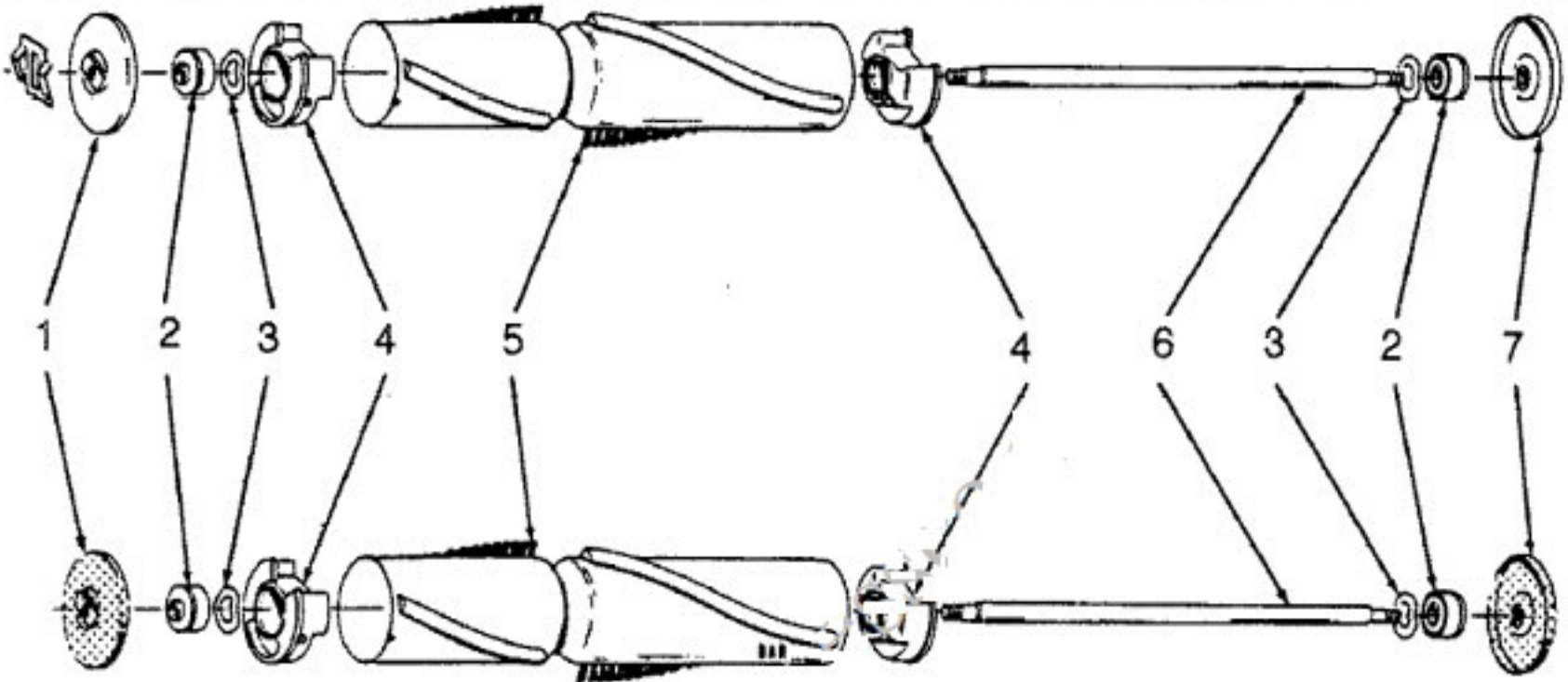
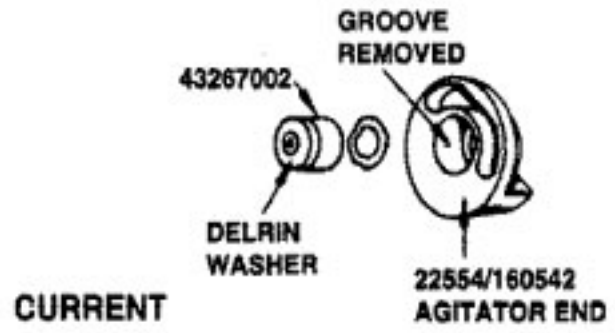
Model Number: U4497-9
BOM/Serial #: U4497-9
Graphic Title: MOTOR ASSEMBLY

| Image | Key | Part Number | Description | Substitution | Qty. |
|-------|-----|-------------|----------------------|--------------|------|
| 1 | 1 | 45533AY- | SCREW | | 3 |
| 1 | 2 | 42934002 | UPPER MOTOR BEARING | | 1 |
| 1 | 3 | 38755005 | VENT FAN-PLASTIC-U44 | | 1 |
| 1 | 3 | 38755004 | VENTILATING FAN-U415 | | 1 |
| 1 | 4 | 161535-- | SCREW | | 4 |
| 1 | 5 | 019857-- | UPPER MOTOR CASING | | 1 |
| 1 | 5 | 42195003 | UPPER MOTOR CASING-U | | 1 |
| 1 | 6 | 47318012 | MOTOR BRUSH | | 2 |
| 1 | 7 | 36315003 | BRUSH CAP - U4313 | | 2 |
| 1 | 8 | 046930AZ | SCREW | | 1 |
| 1 | 9 | 44765085 | ARMATURE-8MM | | 1 |
| 1 | 10 | 045118-- | FIELD BOLT | | 2 |
| 1 | 11 | 45412015 | FIELD COIL | | 1 |
| 1 | 11 | 45421015 | FIELD-U4361 | | 1 |
| 1 | 12 | 21772501 | SCREW | | 3 |
| 1 | 13 | 014062-- | LOCK WASHER | | 5 |
| 1 | 14 | 42193006 | Motor Case LH | | 1 |
| 1 | 15 | 015673-- | NUT HEX 5140 | | 2 |
| 1 | 16 | 43267006 | BEARING ASSEM COMP-8 | | 1 |
| 1 | 16 | 24152807 | MOTOR BEARING - 8MM | | 1 |
| 1 | 17 | 32184003 | BEARING RETAINER-8MM | | 1 |
| 1 | 18 | 019772-- | WASHER-LOCK-843 | | 3 |
| 1 | 19 | 045251-- | NUT | | 3 |
| 1 | 20 | 38755011 | FAN | | 1 |
| 1 | 21 | 31162004 | WASHER-HEAT INSULATI | | 1 |
| 1 | 22 | 38532015 | MOTOR PULLEY - U4479 | | 1 |
| 1 | 22 | 38532009 | MOTOR PULLEY-HEAT IN | 38532005 | 1 |
| 1 | 23 | 166563-- | WASHER | | 1 |
| 1 | 24 | 31731006 | SPACER-U4405 | | 1 |
| 1 | 25 | 43574133 | MOTOR | | 1 |
| 1 | 25 | 43574183 | MOTOR ASSEM. COMPLET | | 1 |
| 1 | 25 | 014320-- | TERMINAL 1060 | | 1 |
| 1 | 26 | 40300014 | ARMATURE-SPACER/SPLI | | 1 |

**Bearing Assm. 12978
and Related Components**

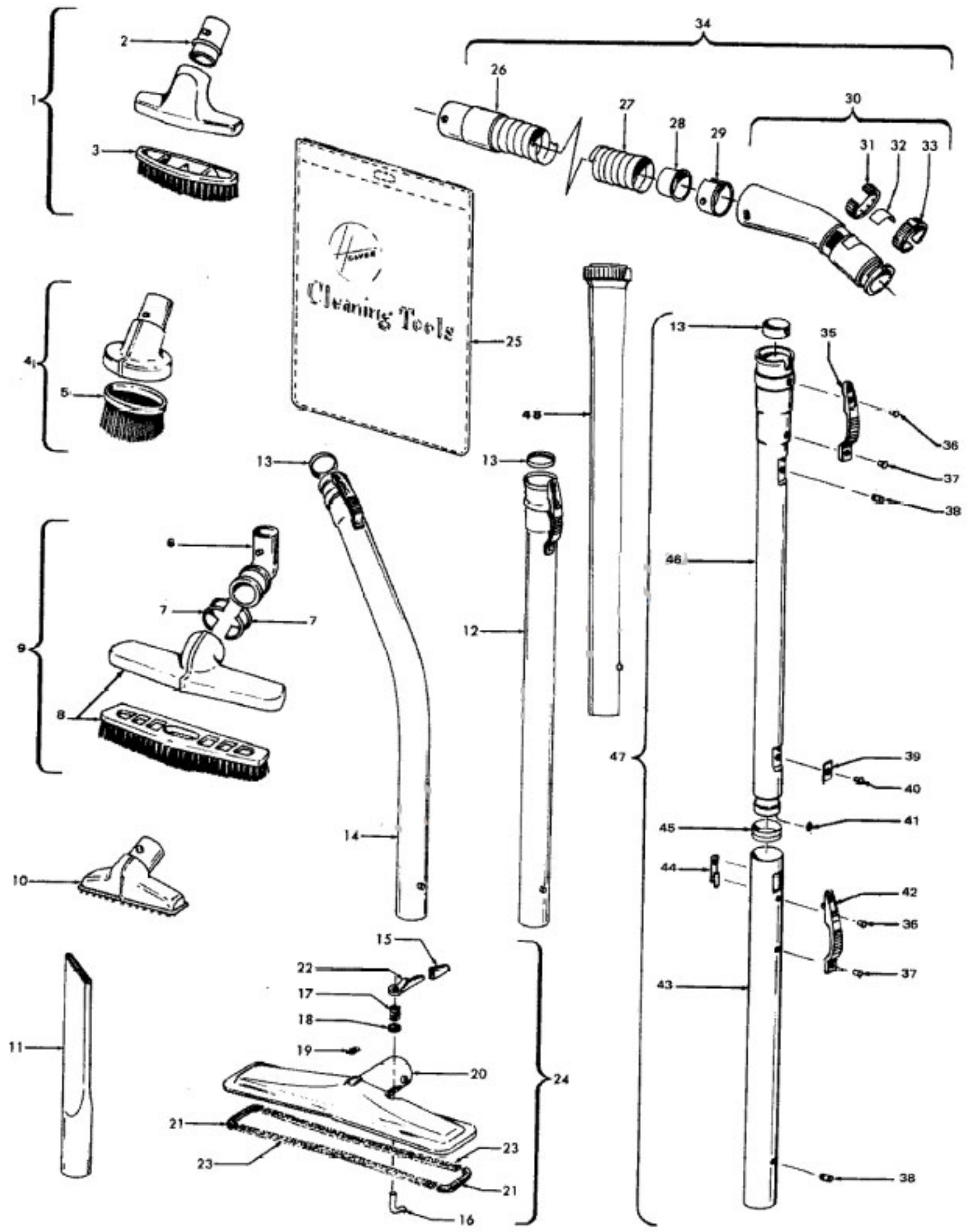


**Bearing Assm. 43267002
and Related Components**



Model Number: U4497-9
BOM/Serial #: U4497-9
Graphic Title: AGITATOR

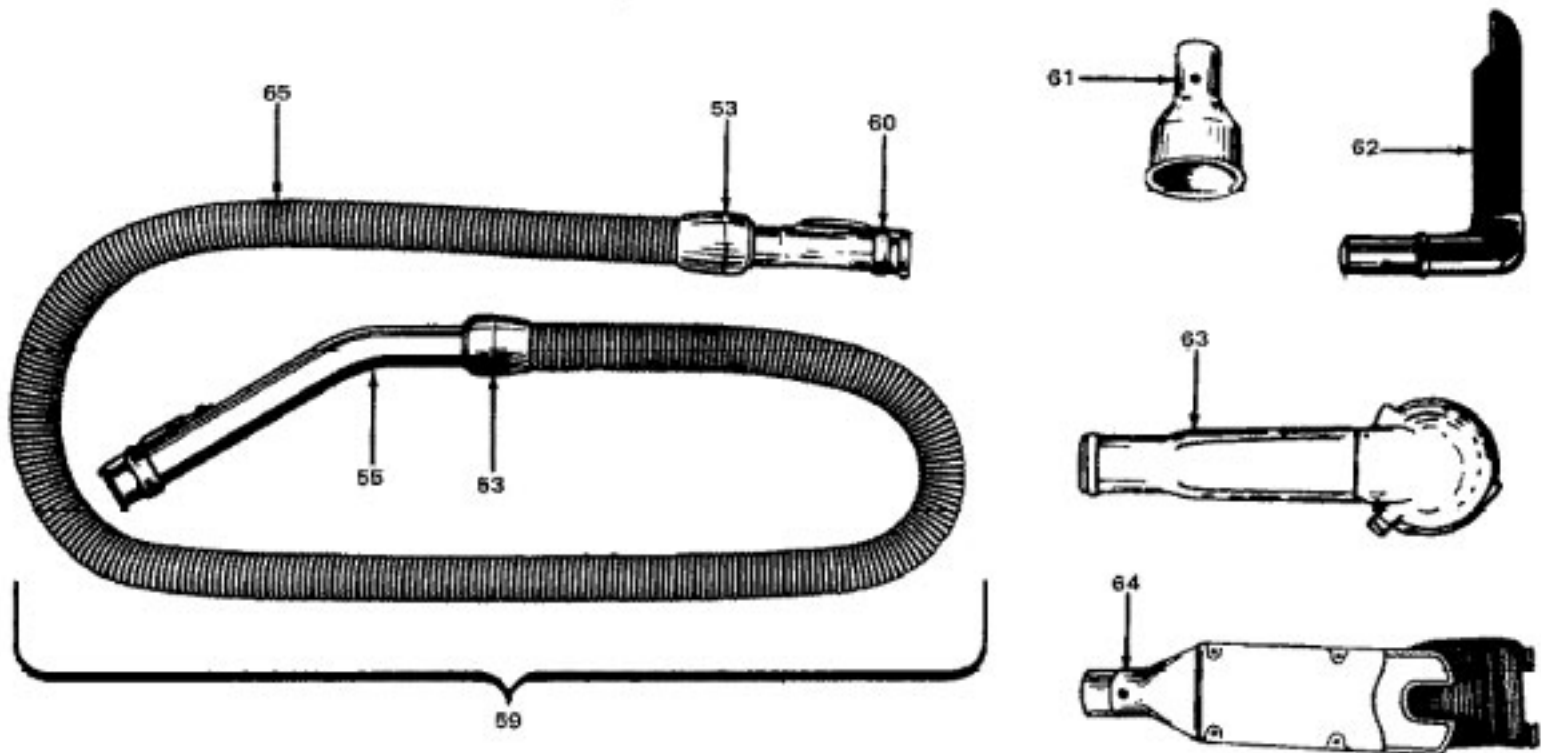
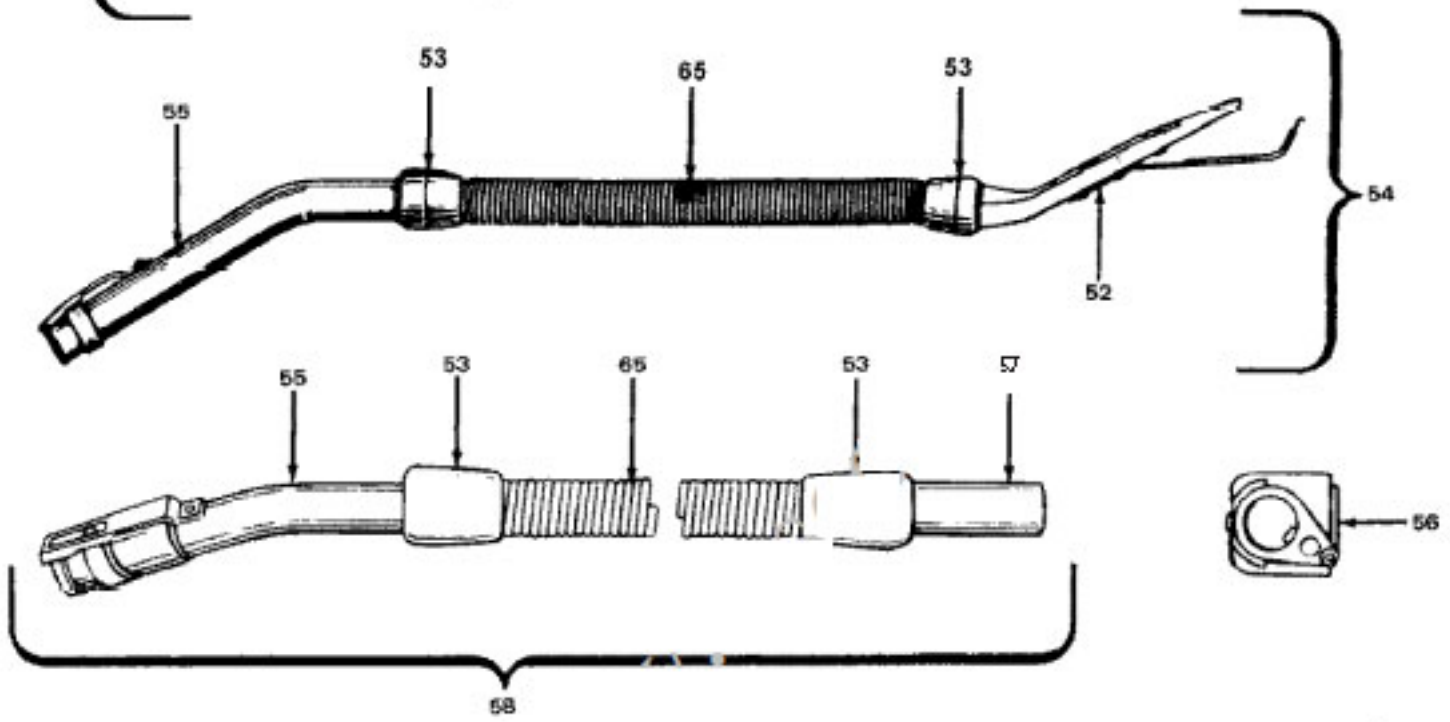
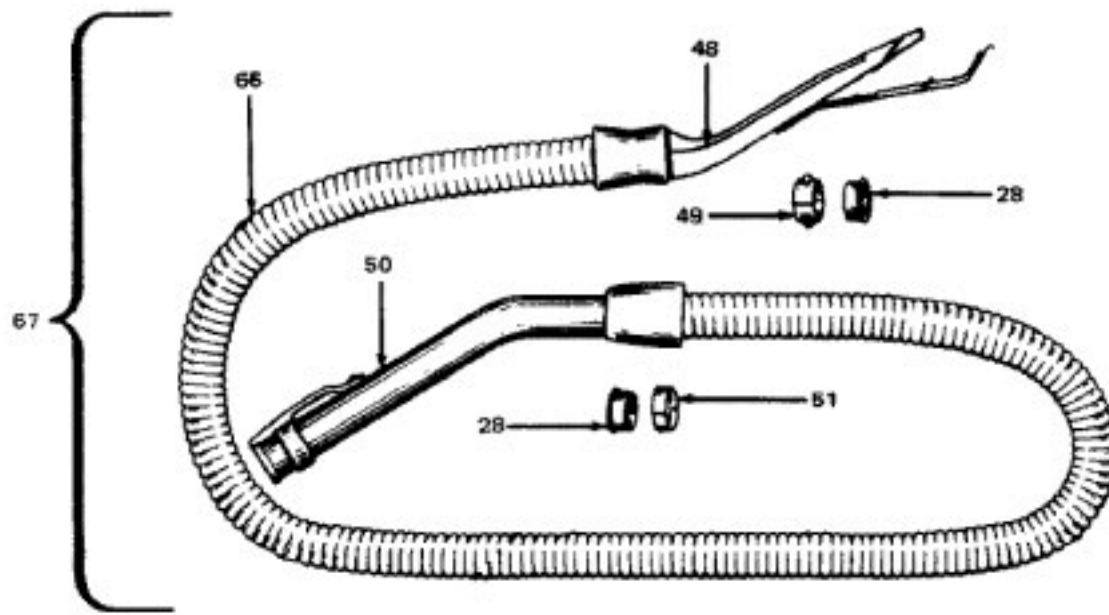
| Image | Key | Part Number | Description | Substitution | Qty. |
|-------|-----|-------------|----------------------|--------------|------|
| 1 | 1 | 36423003 | THREAD GUARD-LH | 049180-- | 1 |
| 1 | 1 | 049180-- | THREAD GUARD & SP - | | 1 |
| 1 | 2 | 43267002 | AGITATOR BEARING ASM | | 1 |
| 1 | 3 | 21347003 | CONICAL WASHER | | 1 |
| 1 | 4 | 022554-- | AGITATOR END 65 | | 1 |
| 1 | 4 | 160542-- | AGITATOR END | | 1 |
| 1 | 4 | 41435070 | AGITATOR END ASSEMBL | | 1 |
| 1 | 5 | 012998BZ | AGITATOR BRUSH-NYLON | | 1 |
| 1 | 5 | 160646BZ | AGITATOR BRUSH REVER | | 1 |
| 1 | 5 | 48445001 | AGITATOR BRUSH BACK | | 1 |
| 1 | 6 | 012981-- | AGITATOR SHAFT | 32724008 | 1 |
| 1 | 6 | 32724008 | AGITATOR SHAFT | | 1 |
| 1 | 7 | 12985AY- | THREAD GUARD RH | 012985AY | 1 |
| 1 | 7 | 36423007 | THREAD GUARD-RH | 012985AY | 1 |
| 1 | 10 | 44783AG- | BELT | 044783AG | 1 |
| 1 | 10 | 049258AG | BELT-CONVERTIBLE | | 1 |
| 1 | 11 | 41435005 | AGITATOR ASSEM COMP- | 48414003 | 1 |
| 1 | 11 | 169371MF | AGITATOR COMPLETE-CT | | 1 |
| 1 | 11 | 48414006 | AGITATOR ASSEMBLY CO | 48414003 | 1 |
| 1 | 11 | 48414007 | AGITATOR ASSEMBLY CO | | 1 |
| 1 | 12 | 48414002 | AGITATOR - FOUR BRUS | | 1 |
| 1 | 12 | 48414003 | 4 BRUSH AGITATOR | | 1 |
| 1 | 13 | 48414021 | AGITATOR ASSEMBLY CO | | 1 |



Model Number: U4497-9
BOM/Serial #: U4497-9
Graphic Title: CLEANINGTOOLS

| Image | Key | Part Number | Description | Substitution | Qty. |
|-------|-----|-------------|----------------------------|--------------|------|
| 1 | 1 | 43414016 | FURNITURE BRUSH-AG | | 1 |
| 1 | 1 | 161852JM | FURNITURE BRUSH-S305 | 43414016 | 1 |
| 1 | 2 | 013149JM | NOZZLE CONNECTOR TUB | | 1 |
| 1 | 3 | 013254BZ | BRUSH BACK | 43414016 | 1 |
| 1 | 4 | 161851JM | DUSTING BRUSH | 43414064 | 1 |
| 1 | 4 | 43414064 | DUSTING BRUSH-AG | | 1 |
| 1 | 4 | 43414145 | DUSTING BRUSH | | 1 |
| 1 | 5 | 013263BZ | DUSTING BRUSH FACE | | 1 |
| 1 | 6 | 13154JM- | FLOOR BRUSH SWIVEL& COLLAR | | 1 |
| 1 | 6 | 38644020 | SWIVEL CONNECTOR - A | | 1 |
| 1 | 7 | 33712007 | SPLIT RING | | 1 |
| 1 | 7 | 013276-- | FLOOR BRUSH SWIVEL B | | 1 |
| 1 | 8 | 013155JM | FLOOR BRUSH BACK & N | 43414073 | 1 |
| 1 | 9 | 013077JM | FLOOR BRUSH | 43414073 | 1 |
| 1 | 9 | 43414135 | FLOOR BRUSH-AAP-FRIC | 43414142 | 1 |
| 1 | 9 | 43414073 | FLOOR BRUSH-AG-S3273 | | 1 |
| 1 | 10 | 43414057 | FURNITURE NOZZLE-AG- | | 1 |
| 1 | 10 | 38614029 | FURNITURE NOZZLE-AG | | 1 |
| 1 | 11 | 38617017 | CREVICE TOOL-AG -S32 | | 1 |
| 1 | 11 | 38617024 | CREVICE TOOL - AG | | 1 |
| 1 | 12 | 43453027 | EXTENSION TUBE ASSEM | | 1 |
| 1 | 13 | 38784087 | GASKET | | 1 |
| 1 | 14 | 43466040 | HOSE TUBE ASSEM. - A | | 1 |
| 1 | 15 | 034207AG | FOOT PAD - F5047 | | 1 |
| 1 | 16 | 33126001 | LATCH-U4901-U4903 | | 1 |
| 1 | 17 | 38311006 | SPRING | | 1 |
| 1 | 18 | 161549-- | WASHER | | 1 |
| 1 | 19 | 34121001 | PADS-2910 | | 1 |
| 1 | 20 | 43482097 | CONVERTER BODY ASSEM | | 1 |
| 1 | 21 | 34253003 | SEAL-END-U4901-U4903 | | 1 |
| 1 | 22 | 38452026 | LATCH LEVER-U4901-U4 | | 1 |
| 1 | 23 | 34113005 | SEAL-SIDE-U4901-U490 | | 1 |
| 1 | 24 | 43482097 | CONVERTER BODY ASSEM | | 1 |
| 1 | 25 | 58544004 | TOOL BAG U3P03 | | 1 |
| 1 | 26 | 32288003 | HOSE CONNECTOR-BMH-J | | 1 |

| Image | Key | Part Number | Description | Substitution | Qty. |
|-------|-----|-------------|-----------------------|--------------|------|
| 1 | 26 | 32288007 | HOSE CONNECTOR-SHORT | | 1 |
| 1 | 26 | 32288004 | HOSE CONNECTOR-AAP-U | | 1 |
| 1 | 27 | 38671001 | HOSE LESS ENDS MOLDE | | 1 |
| 1 | 27 | 38671030 | HOSE LESS ENDS-AAP | | 1 |
| 1 | 27 | 43434203 | HOSE ASSEM COMP - AA | | 1 |
| 1 | 27 | 38671028 | HOSE LESS ENDS-AAP-U | | 1 |
| 1 | 28 | 32156010 | HOSE SLEEVE - BZ | | 1 |
| 1 | 29 | 36171025 | HOSE CONNECTOR COLLA | | 1 |
| 1 | 29 | 36116006 | HOSE CONNECTOR COLLA | | 1 |
| 1 | 30 | 43466055 | HOSE CONNECTOR CURVE | | 1 |
| 1 | 30 | 43466068 | HOSE GRIP W/SC-AG-S1 | | 1 |
| 1 | 30 | 43466058 | HOSE CONNECTOR-CURVE | | 1 |
| 1 | 30 | 39454059 | HAND GRIP | | 1 |
| 1 | 31 | 38711014 | SUCTION CONTROL RING | | 1 |
| 1 | 32 | 51869006 | HOSE CONN LABEL-U490 | | 1 |
| 1 | 33 | 36153009 | LATCH RING-AG-S3273 | | 1 |
| 1 | 34 | 43434225 | HOSE ASSEMBLY COMP-F | | 1 |
| 1 | 34 | 43434210 | HOSE ASSEM COMP-AAP- | | 1 |
| 1 | 34 | 43434209 | HOSE ASSM COMP-MLD-J | | 1 |
| 1 | 34 | 43434203 | HOSE ASSEM COMP - AA | | 1 |
| 1 | 35 | 012846AG | TUBE LATCH | | 1 |
| 1 | 36 | 012772-- | RIVET | | 1 |
| 1 | 37 | 012783-- | RIVET | | 1 |
| 1 | 38 | 12763AW- | RIVET | 012763AW | 1 |
| 1 | 39 | 012824-- | PLATE | | 1 |
| 1 | 40 | 012600-- | RIVET | | 1 |
| 1 | 41 | 21312704 | WASHER | | 1 |
| 1 | 42 | 36152018 | TUBE LATCH - AAT | | 1 |
| 1 | 43 | 012597-- | EXTENSION TUBE OUTER | | 1 |
| 1 | 44 | 012589-- | TUBE GUIDE | | 1 |
| 1 | 45 | 012844JM | GASKET | | 1 |
| 1 | 46 | 012598-- | EXTERNIION TUBE INNER | | 1 |
| 1 | 47 | 43458001 | EXTENSION WAND - 211 | | 1 |
| 1 | 48 | 38634078 | EXTENSION TUBE-AG | | 1 |
| 1 | 48 | 3863801P | EXTENSION TUBE-AG-PO | | 1 |



Model Number: U4497-9
BOM/Serial #: U4497-9
Graphic Title: HOSE

| Image | Key | Part Number | Description | Substitution | Qty. |
|-------|-----|-------------|----------------------|--------------|------|
| 1 | 48 | 013147JM | HOSE END - CONVERTER | | 1 |
| 1 | 49 | 012615BZ | HOSE CONNECTOR COLLA | | 1 |
| 1 | 50 | 43466068 | HOSE GRIP W/SC-AG-S1 | | 1 |
| 1 | 51 | 012704BZ | HOSE GRIP COLLAR | | 1 |
| 1 | 52 | 023473JM | HOSE END CONVERTER | | 1 |
| 1 | 53 | 23393JM- | HOSE GRIP | | 1 |
| 1 | 54 | 012864JM | HOSE ASSM COMPLETE-U | | 1 |
| 1 | 55 | 013143-- | HOSE TUBE | | 1 |
| 1 | 56 | 43452503 | CONVERTER ASSM-JR CL | | 1 |
| 1 | 57 | 017959-A | HOSE CONNECTOR TUBE | | 1 |
| 1 | 57 | 641398LL | HOSE CONN TUBE-1341 | | 1 |
| 1 | 58 | 019633JM | HOSE COMPLETE - 1341 | | 1 |
| 1 | 59 | 022671JM | HOSE COMPLETE | | 1 |
| 1 | 59 | 023007-A | HOSE-64 | | 1 |
| 1 | 60 | 034355-- | HOSE END SHORT 65 | | 1 |
| 1 | 60 | 034083-- | HOSE END 6400 | | 1 |
| 1 | 61 | 034984-A | BLOWER-65 | | 1 |
| 1 | 62 | 035447-- | CONVERTER SPECIAL | | 1 |
| 1 | 63 | 035190-- | MODEL 91 CONNECTOR | | 1 |
| 1 | 64 | 034202JM | CONNECTOR | | 1 |
| 1 | 65 | 048617JM | HOSE-LESS ENDS-ULTRA | | 1 |
| 1 | 66 | 43434213 | HOSE COMPLETE-ASSM Q | 43434239 | 1 |
| 1 | 67 | 012864JM | HOSE ASSM COMPLETE-U | | 1 |
| 1 | 68 | 161728LL | TURBINE ROTO-POWER B | | 1 |
| 1 | 68 | 169460JM | HOSE-ULTRAFLEX-50 FT | | 1 |
| 1 | 68 | 43431011 | HOSE-TUFLEX-JM-50 FT | | 1 |