

## Legacy II

## Models U4537-910, U4537-930, \* U4537-980, U4539-930, U4551-910, U4551-920, U4563-910, U4567-910, U4567-920, U4567-930, U4585-910

| Ref. No. | Part No. | Description  | Ref. No. | Part No. | Description   |   |
|----------|----------|--|----------|----------|---|---|
| 1        | 32377004 | Hose Connector   |          |          |   |   |
| 2        | 32288011 | Hose Adapter - AG  |          |          |   |   |
| 3        | 43434088 | Cleaning Tool Hose Assem.  |          | 43686133 | U4567-910 Incl. Items 31,32,60<br>Outer Bag Comp. - U4585-910<br>(Incl. Items 31,32,60) |   |
| 4        | 43414145 | Dusting Brush - Friction   |          | 43686162 | Outer Bag Comp. - U4567-920 (Incl.<br>Items 31,32,60)                                   |   |
| 5        | 38634078 | Extension Tube   |          | 43686161 | Outer Bag Comp. - U4551-920 (Incl.<br>Items 31,32,60)                                   |   |
| 6        | 38614029 | Furniture Nozzle   |          | 43686160 | Outer Bag Comp. - U4537-910 (Incl.<br>Items 32,60)                                      |   |
| 7        | 38617024 | Crevice Tool   |          | 43686175 | Outer Bag Comp. - U4537-930 (incl.<br>It 32,60)   |   |
| 8        | 37941042 | Hinge Cap  |          | 43686176 | Outer Bag Comp. - U4567-930 (Incl.<br>Items 31,32,60)                                   |   |
| 9        | 41426087 | Tool Holder/Hinge Cap  |          |          |   |   |
|          | 41426019 | Tool Holder Assem. - U4537-910,<br>U4537-930, U4539-930  |          | 43686221 | Outer Bag Comp. - U4539-930   |   |
|          | 41426089 | Tool Holder/Door Assem. - U4567-920<br>U4567-930   |          | 34       | 21447217  | Screw - Self Tapping                      |
| 10       | 21447220 | Screw - Self Tapping   |          | 35       | 36131090  | Motor Retainer Cap - L.H.                 |
| 11       | 38425062 | Jacket Support Upper - U4585-910   |          | 36       | 38613029  | Air Intake                                |
| 12       | 37959076 | Jacket Support Cap - U4585-910   |          | 37       | 43576142  | Motor - (P - 202)                         |
| 13       | 51639092 | Cap Nameplate - U4585-910  |          | 38       | 40201085  | Nut & Bolt                                |
| 14       | 35111002 | Drawer - U4585-910   |          | 39       | 27313101  | Dirt Finder Lamp                          |
| 15       | 37911079 | Handle Cap - ABE - U4537-910,<br>U4537-930, U4563-910  |          | 40       | 38522011  | Rear Wheel                                |
| 16       | 38421003 | Switch Button  |          | 41       | 31523012  | Wheel Shaft                               |
| 17       | 39458056 | Handle Grip - U4551-910, U4551-920,<br>U4567-910, U4567-920, U4567-930,<br>U4585-910, U4539-930                                |          | 42       | 38458022  | Handle Release Lever                      |
|          | 39458057 | Handle Grip - U4537-930 (Kohl's)   |          | 43       | 38567014  | Indicator Knob                            |
| 18       | 38458006 | Switch Rod Upper   |          | 44       | 38567009  | Cam Actuator                              |
| 19       | 38335020 | Bag Strap Spring   |          | 45       | 38784016  | Seal                                      |
| 20       | 36425072 | Bag Strap  |          | 46       | 13261AY   | Rug Nozzle Rib Shoe                       |
| 21       | 48663164 | Upper Handle Assem. - U4551-910,<br>U4551-920, U4567-910, U4567-920,<br>U4567-930, U4585-910, U4537-930<br>(Kohl's), U4539-930 |          | 47       | 42242266  | Main Body (Incl. Items 40,41,42,46)       |
|          | 48663165 | Upper Handle Assem. - U4537-910,<br>U4537-930, U4563-910 (w/Handle<br>Cap - Item 15)   |          | 48       | 38351012  | Spring                                    |
| 22       | 46388027 | Attachment Cord - 35'  |          | 49       | 38563013  | Nozzle Height Adj. Cam                    |
| 23       | 4010001A | Disp. Bag - 3 Pk.  |          | 50       | 38452089  | Lever (Use wheel assem. 43248059)         |
|          | 4010100A | Disp. Bag - 3 Pk. - Micro - U4537-910,<br>U4537-930, U4567-920, U4567-930  |          | 51       | 32563012  | Wheel Shaft (Use 43248059)                |
| 24       | 51669066 | Hood Nameplate   |          | 52       | 36131056  | Wheel Retainer                            |
|          | 52115183 | Hood Nameplate - U4551-910   |          | 53       | 43248059  | Front Wheel                               |
|          | 52115184 | Hood Nameplate - U4563-910   |          | 54       | 48414081  | Agitator - (P - 204)                      |
|          | 52115188 | Hood Nameplate - U4567-910   |          | 55       | 38528027  | Belt                                      |
|          | 52115185 | Hood Nameplate - U4585-910   |          | 56       | 43248059  | Front Wheel Assem. (Incl. It. 50, 51, 53) |
|          | 52115190 | Hood Nameplate - U4537-910   |          | 57       | 37245108  | Bottom Plate                              |
|          | 52115189 | Hood Nameplate - U4567-920   |          | 58       | 38718005  | Valve Gate                                |
| 25       | 21362006 | Speed Nut  |          | 59       | 34572002  | Cam Actuator Spring                       |
| 26       | 38784056 | Seal   |          | 60       | 36425053  | Jacket Support Lower                      |
| 27       | 42247005 | Air Intake Door Assem. - AAY<br>U4551-910, U4551-920 (Incl. Items<br>25,26)  |          | 61       | 38458046  | Switch Rod Lower                          |
|          | 42247003 | Air Intake Door Assem. - AG - U4563-910,<br>U4567-910, U4567-920, U4567-930 (Incl.<br>It. 25,26)                               |          | 62       | 48669001  | Lower Handle/Muffler Assem.               |
|          | 37257175 | Air Intake Door Assem. - ABB (Incl. It<br>25,26) U4539-930   |          |          | 48669017  | Lower Handle - U4537-930 (Kohl's)         |
|          | 42247009 | Air Intake Door Assem. - ABM U4537-910,<br>U4537-930 (Incl. It. 25,26)   |          |          |   |   |
| 28       | 38351011 | Spring   |          |          |   |   |
| 29       | 39383097 | Dirt Finder Lens   |          |          |   |   |
| 30       | 42252229 | Hood Assem. w/o Nameplate - AAY -<br>U4551-910, U4551-920  |          |          |   |   |
|          | 42252227 | Hood Assem. w/o Nameplate - AG -<br>U4563-910, U4567-910, U4567-920,<br>U4567-930  |          |          |   |   |
|          | 42252292 | Hood Assem. w/o Nameplate - ABB -<br>U4585-910, U4539-930  |          |          |   |   |
|          | 42252298 | Hood Assem. w/o Nameplate - ABM -<br>U4537-910, U4537-930  |          |          |   |   |
| 31       | 37959072 | Jacket Support Cap - U4551-910,<br>U4563-910, U4567-910, U4567-930   |          |          |   |   |
| 32       | 36425062 | Jacket Support Upper - U4551-910,<br>U4563-910, U4567-910, U4567-930   |          |          |   |   |
|          | 36425064 | Jacket Support Upper - U4537-910,<br>U4537-930, U4539-930  |          |          |   |   |
| 33       | 43686130 | Outer Bag Comp. - U4551-910<br>(Incl. Items 31,32,60)  |          |          |   |   |
|          | 43686132 | Outer Bag Comp. - U4563-910,   |          |          |   |   |

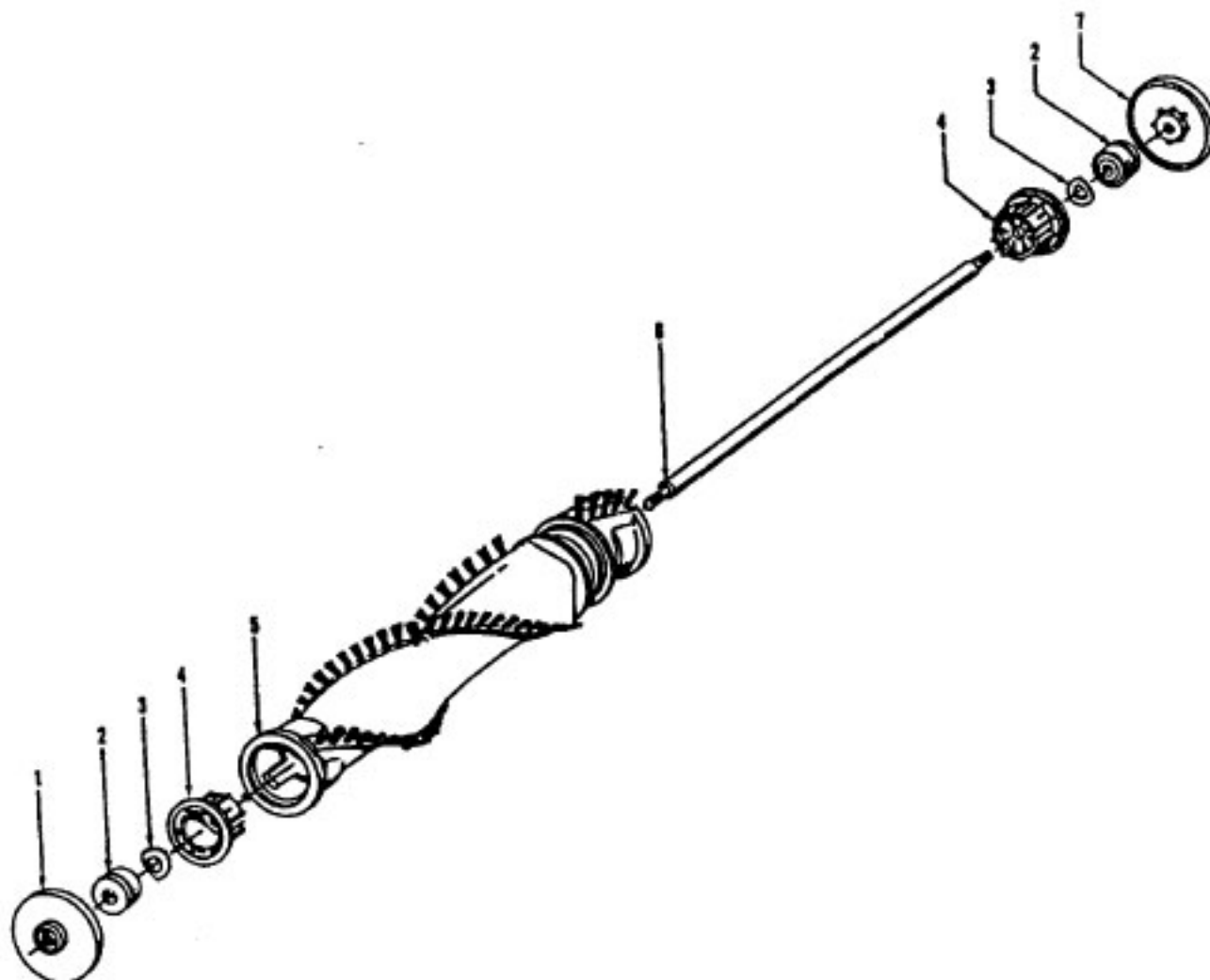
### ITEMS NOT ILLUSTRATED

|          |  |
|----------|--|
| 3944201P | Cord Wrap                                |
| 57363002 | Air Freshener Tablet - 1 Pk. - U4585-910 |
| 57363003 | Air Freshener Tablet - 4 Pk. - U4585-910 |
| 56511233 | Owner Manual - U4537-930, U4539-930      |
| 56511397 | Owner Manual - U4567-930                 |
| 56511373 | Owner Manual                             |
| 56511382 | Owner Manual - U4537-910                 |
| 58174077 | Carton - U4537-980                       |
| 58185184 | Carton - Common                          |
| 58366096 | Front Support - U4537-980                |
| 58366097 | Rear Support - U4537-980                 |
| 58385018 | Cleaner Support                          |
| 58385021 | Cleaner Support - U4537-910, U4537-930   |
| 58347026 | Carton                                   |
| 38347023 | Cleaning Tool Carton - U4537-980         |
| 37257170 | Tool Holder Door - U4567-920             |

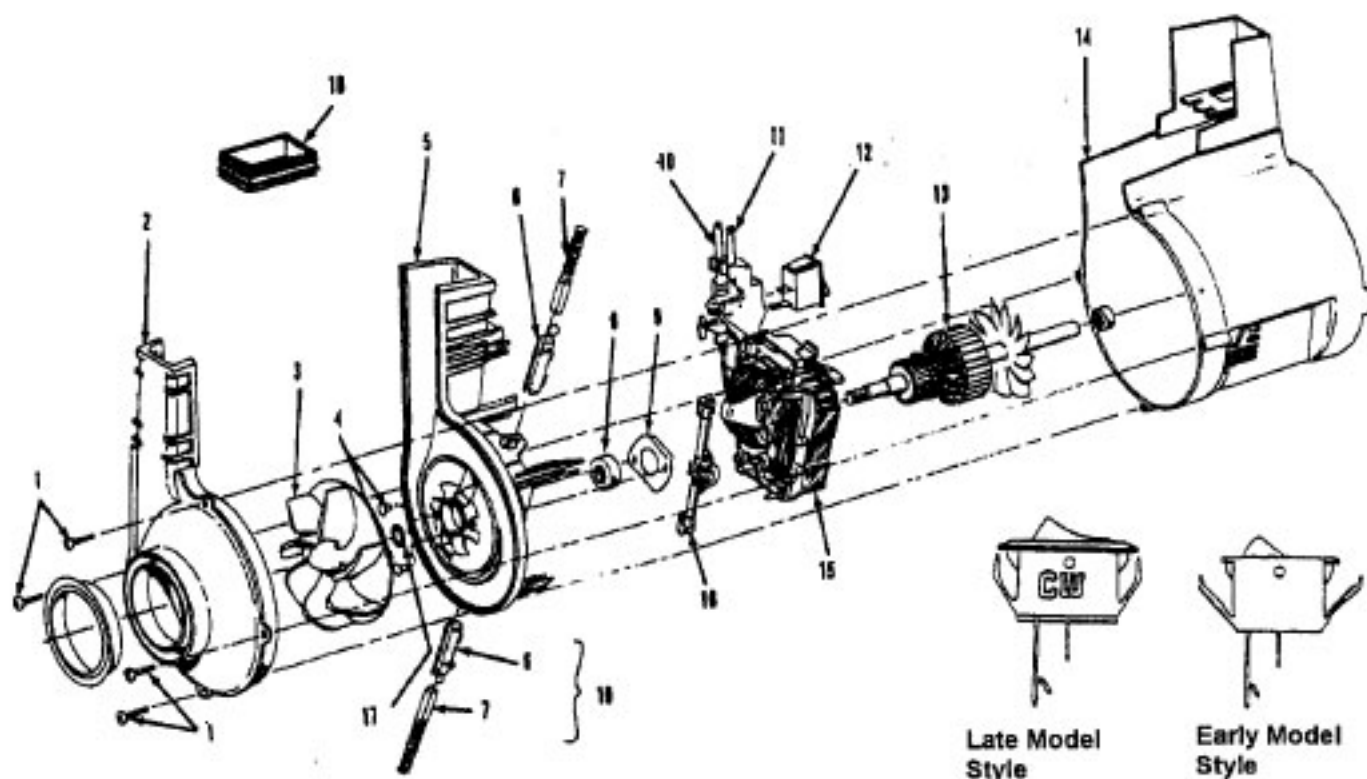
\* Note: Model U4537-980 is an ensemble which includes the Model U4537-930 Legacy II Upright and a Model S1103 Dubl-Duty Wet/Dry Hand Cleaner. (For Model S1103 components see Hand/Stick microfiche sections page 54)

**Agitator - 48414081**  
**Agitator - 48414075**

**Elite/ Elite II/ Dimension/ Legacy/ TurboPOWER/ Caddy Vac - Four Brush**  
**Caddy Vac - Four Brush**



| Ref. No. | Part No. | Description                                 |
|----------|----------|---|
|          | 48414081 | Agitator Assem. Complete (Natural Bristles) |
|          | 48414075 | Agitator Assem. Complete (Blue Bristles)    |
| 1        | 36423016 | Thread Guard - RH                           |
| 2        | 43267002 | Agitator Bearing Assem. (2)                 |
| 3        | 21347003 | Conical Washer (2)                          |
| 4        | 36422022 | Agitator End (2)                            |
| 5        | N/A      | Agitator Body                               |
| 6        | 32724013 | Agitator Shaft                              |
| 7        | 36423017 | Thread Guard - LH - AG                      |



| Ref. No. | Part No. | Description                                  |
|----------|----------|--|
|          | 43576142 | Motor Assem. Comp.                           |
|          | 43576181 | Motor Assem. Comp. (Replaced by 43576204)    |
| 1        | 214793DA | Screw-Self Tapping (4)                       |
| 2        | 38736033 | Fan Chamber                                  |
| 3        | 38755030 | Fan  |
| 4        | N/A      | Rivet - Semi Tubular (2)                     |
| 5        | N/A      | Motor Housing Assem.                         |
| 6        | N/A      | Motor Brush Holder (2)                       |
| 7        | N/A      | Motor Brush Assem. (2)                       |
| 8        | N/A      | Bearing                                      |
| 9        | N/A      | Bearing Retainer                             |
| 10       | 36914004 | Switch Bus Bar                               |
| 11       | 39116005 | Attachment Terminal                          |
| 12       | 28218043 | Switch Assem. - Early Models (Prior to 5/96) |
|          | 28161062 | Switch Assem. - Late Models (After 5/96)     |
| 13       | N/A      | Armature/Bearing Assem.                      |
| 14       | 37194046 | Motor End Cap Assem. - MW                    |
| 15       | N/A      | Field Assem.                                 |
| 16       | N/A      | Lamp Holder Assem.                           |
| 17       | 21312793 | Washer                                       |
| 18       | 38783020 | Duct Seal                                    |
| 19       | 41311016 | Motor Brush Holder Assem.                    |

ITEMS NOT ILLUSTRATED

- 38781013 Duct Seal (8 1/2" Long adhesive backed foam seal used on early models in place of item 18)
- 54821001 Tape (Roll)