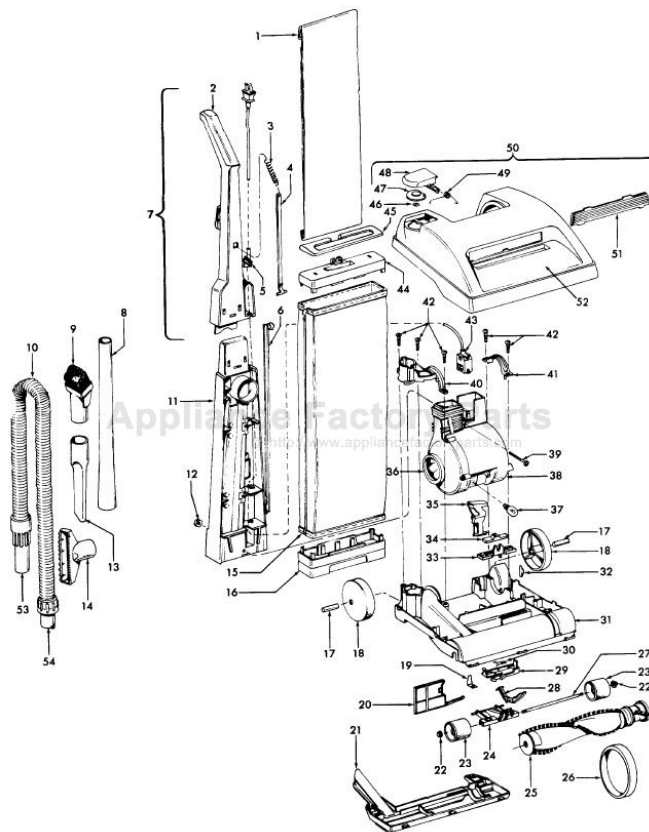


This Owner's Manual is provided and hosted by [Appliance Factory Parts](http://Appliance Factory Parts).



# HOOVER U4545-900 Owner's Manual

[Shop genuine replacement parts for HOOVER  
U4545-900](#)

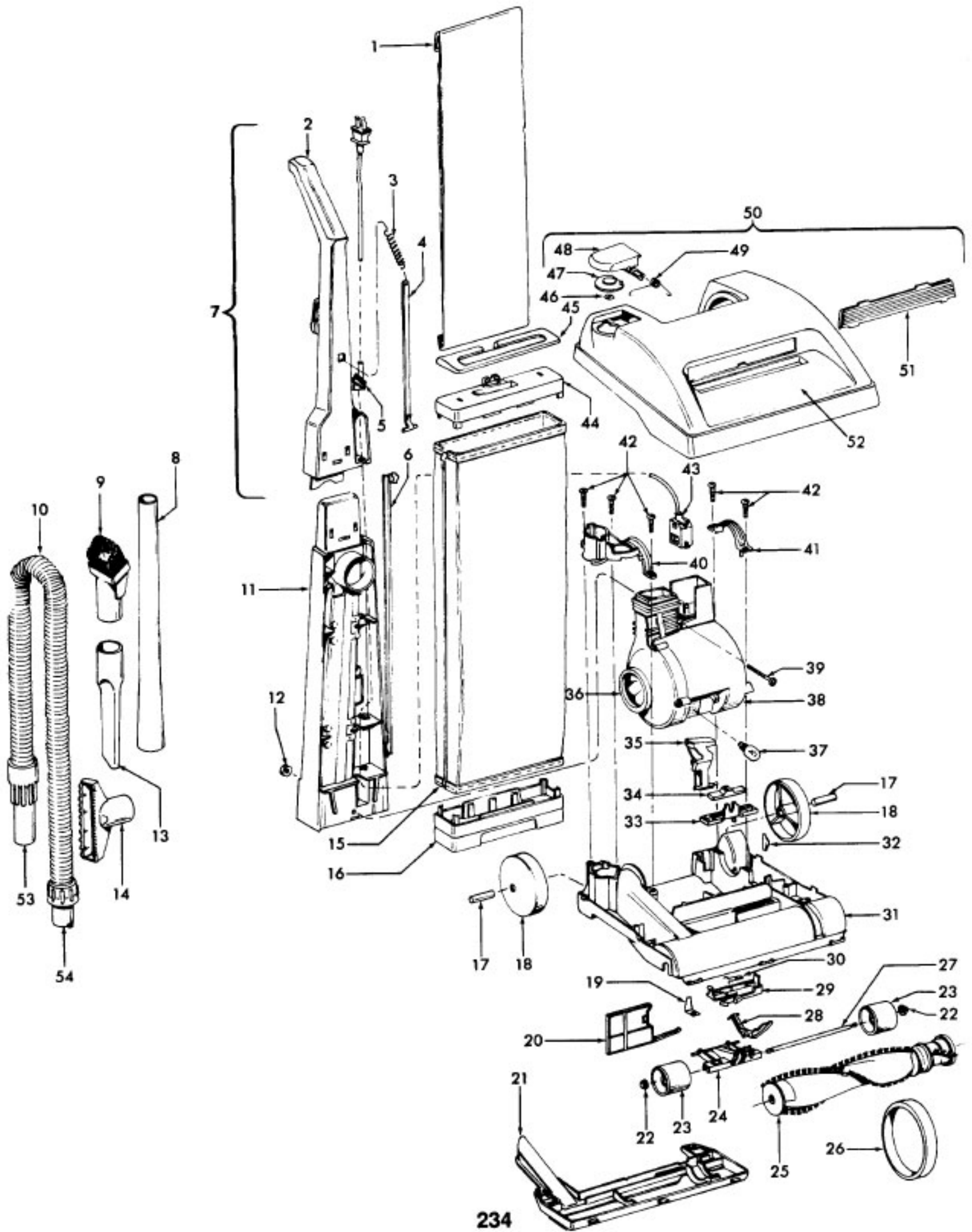


[Find Your HOOVER Vacuum Cleaner Parts - Select From 1456 Models](#)

----- Manual continues below part list -----

## Available Replacement Parts for HOOVER U4545-900

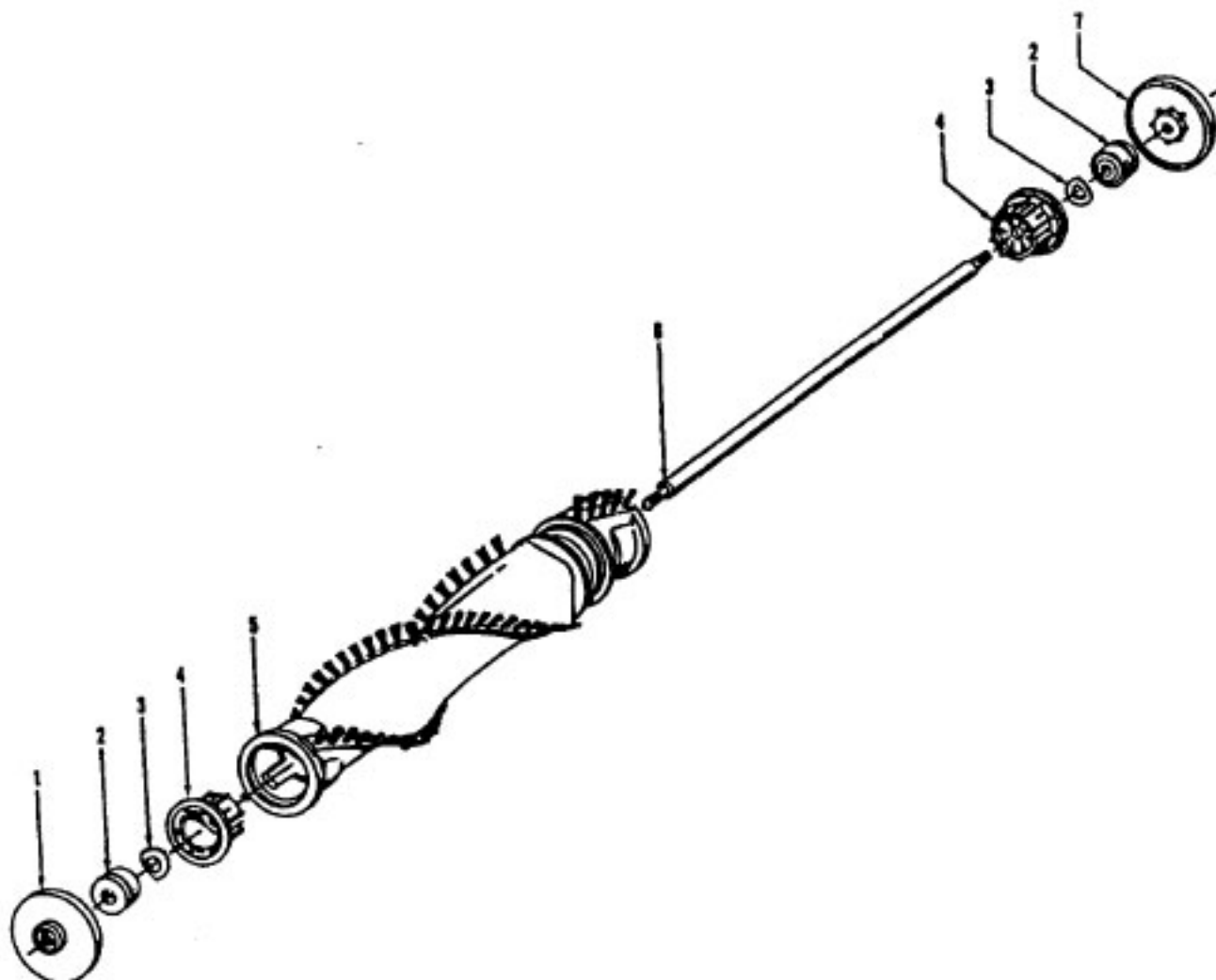
|                            |                                 |
|----------------------------|---------------------------------|
| <a href="#">H-38528040</a> | BELT VACUUM HOOVER OEM (1 PACK) |
| <a href="#">48414036</a>   | HOOVER ELITE BRUSH ROLLER       |
| <a href="#">H-4010001A</a> | VACUUM BAG OEM HOOVER 3 PACK    |
| <a href="#">H-43267002</a> | AGITATOR BEARING ASM            |
| <a href="#">K-109289</a>   | BULB                            |





Agitator - 48414081  
 Agitator - 48414075

Elite/ Elite II/ Dimension/ Legacy/ TurboPOWER/ Caddy Vac - Four Brush  
 Caddy Vac - Four Brush



| Ref. No. | Part No. | Description                                 |
|----------|----------|---|
|          | 48414081 | Agitator Assem. Complete (Natural Bristles) |
|          | 48414075 | Agitator Assem. Complete (Blue Bristles)    |
| 1        | 36423016 | Thread Guard - RH                           |
| 2        | 43267002 | Agitator Bearing Assem. (2)                 |
| 3        | 21347003 | Conical Washer (2)                          |
| 4        | 36422022 | Agitator End (2)                            |
| 5        | N/A      | Agitator Body                               |
| 6        | 32724013 | Agitator Shaft                              |
| 7        | 36423017 | Thread Guard - LH - AG                      |



| Ref. No. | Part No. | Description                                  |
|----------|----------|--|
|          | 43576142 | Motor Assem. Comp.                           |
|          | 43576181 | Motor Assem. Comp. (Replaced by 43576204)    |
| 1        | 214793DA | Screw-Self Tapping (4)                       |
| 2        | 38736033 | Fan Chamber                                  |
| 3        | 38755030 | Fan  |
| 4        | N/A      | Rivet - Semi Tubular (2)                     |
| 5        | N/A      | Motor Housing Assem.                         |
| 6        | N/A      | Motor Brush Holder (2)                       |
| 7        | N/A      | Motor Brush Assem. (2)                       |
| 8        | N/A      | Bearing                                      |
| 9        | N/A      | Bearing Retainer                             |
| 10       | 36914004 | Switch Bus Bar                               |
| 11       | 39116005 | Attachment Terminal                          |
| 12       | 28218043 | Switch Assem. - Early Models (Prior to 5/96) |
|          | 28161062 | Switch Assem. - Late Models (After 5/96)     |
| 13       | N/A      | Armature/Bearing Assem.                      |
| 14       | 37194046 | Motor End Cap Assem. - MW                    |
| 15       | N/A      | Field Assem.                                 |
| 16       | N/A      | Lamp Holder Assem.                           |
| 17       | 21312793 | Washer                                       |
| 18       | 38783020 | Duct Seal                                    |
| 19       | 41311016 | Motor Brush Holder Assem.                    |

ITEMS NOT ILLUSTRATED

|          |  |
|----------|--|
| 38781013 | Duct Seal (8 1/2" Long adhesive backed foam seal used on early models in place of item 18) |
| 54821001 | Tape (Roll)  |