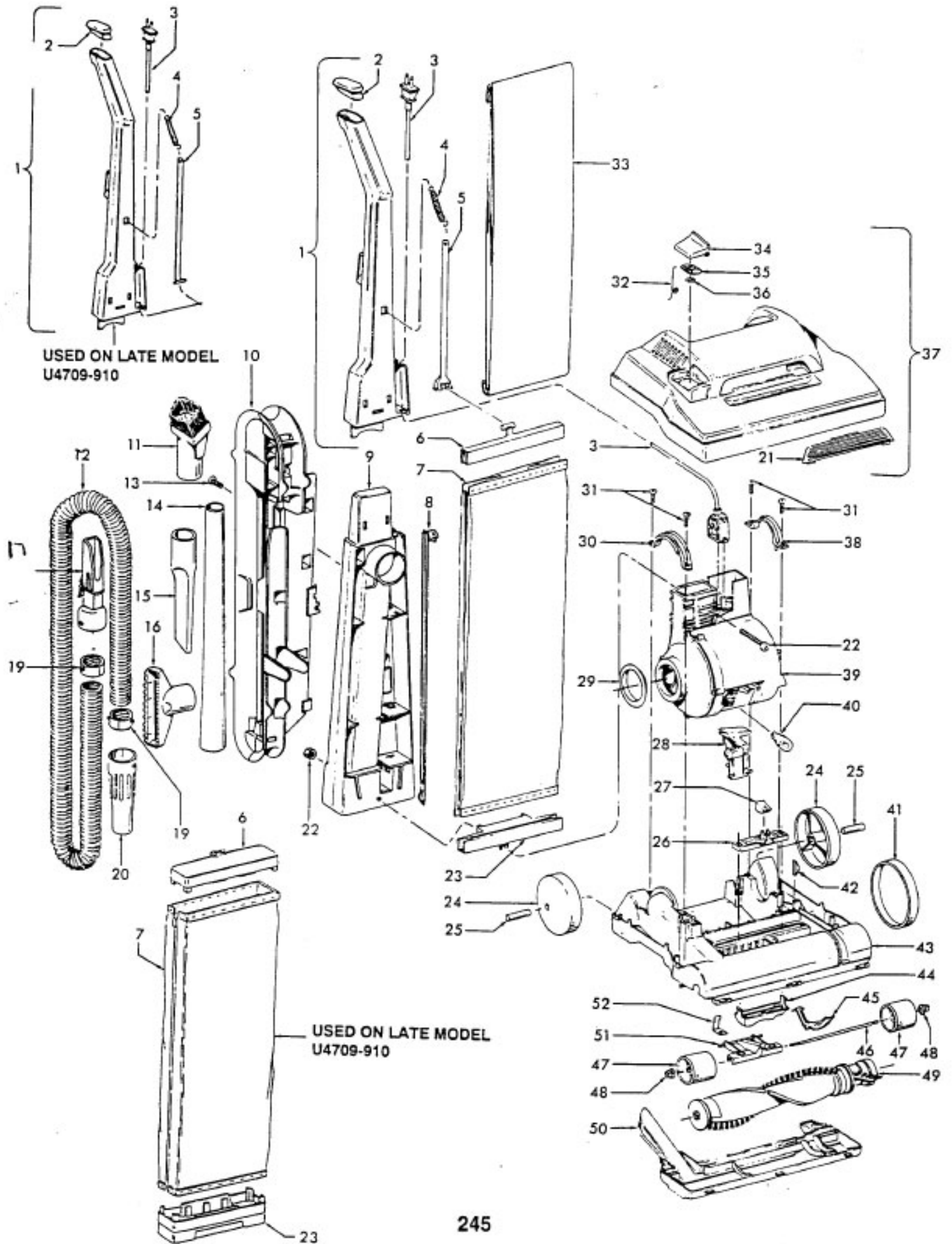


Elite

Models U4617-910, U4617-920, U4617-930, U4709-910, U4715-930,
U4717-930



Elite

Models U4617-910, U4617-920, U4617-930, U4709-910, U4715-930, U4717-930

Ref. No.	Part No.	Description
1	48663142 48663141	Upper Handle Assem. - MW Upper Handle Assem. - MW - U4709-910 (Late Models), U4617-920, U4617-930, U4715-930, U4717-930,
2	37911079	Handle Cap - ABE - U4717-930
3	46388027	Attachment Cord - AG - 35 Ft.
4	38335020	Bag Strap Spring - AY
5	36425071 36425072	Bag Strap - ABE
6	36425067 36425064	Bag Strap - ABE - U4717-930 Jacket Support - Upper - MW Jacket Support - Upper - ABE - U4709-910 (Late Models), U4617-920, U4617-930, U4717-930
7	43674191 43686141 43686144 43686177 43686178 43686189 38456036	Outer Jacket - Sewn - AAP/MN - U4617-910, U4709-910 (Early Models) Outer Bag - AAY - U4709-910 (Late Models) (Incl. Items 6,23) Outer Bag - ABB - U4617-920 (Incl. It 6,23) Outer Bag - ABB - U4617-930 (Incl. It 6,23) Outer Bag - ABM - U4715-930 (Incl. It 6,23) Outer Bag - NAA - U4717-930 (Incl. It 6,23) Switch Control Rod - ABB - U4717-930
8	39464005	Lower Handle - ABE
9	41426086	Tool Holder - ABE
10	43414145	Dusting Brush - Friction
11	43434232	Hose Comp. - Standard - ABX / AG
12	21447220	Screw - Self Tapping
13	38634078	Ext. Tube - AAP
14	38617024	Crevise Tool
15	38614029	Furniture Nozzle - AG
16	38656035	Hose Connector - AG
17		N/A
18		
19	36116014	Hose Connector Collar
20	32288011	Hose Adapter - AG
21	39383099 39383098	Dirt Finder Lens - KC - Custom Dirt Finder Lens - KC - Deluxe
22	40201085	Nut & Bolt
23	36425068 36425063	Jacket Support - Lower - MW Jacket Support - Lower - U4709-910 (Late Models), U4617-920, U4617-930, U4715-930, U4717-930
24	38522011	Rear Wheel - AG
25	31523012	Rear Wheel Shaft
26	38567008	Cam Actuator - KE
27	38421070	Indicator Knob - ABE
28	38458022	Handle Release Lever
29	38784016	Seal
30	36131057	Motor Retainer Cap - R.H.
31	21447217	Screw - Self Tapping
32	38351013	Spring
33	4010001A	Throw - Away Bag - 3 Pk.
34	37257018 37257019 37257027	Door Assem. - ABB (Incl. Items 35,36) Door Assem. - NAA - U4715-930, U4717-930 (Incl. Items 35,36) Door Assem. - AAY - U4709-91 0 (Incl. Items 35,36)

Ref. No.	Part No.	Description
35	38785011	Seal
36	21362006	Speed Nut
37	42252295 42252294 42252320	Hood Assem. - Custom Hood Assem. - AAY - Custom -U4709-910 Hood Assem. - ABB - Custom - U4617-920 (Incl. It. 21,34) Hood Assem. - ABB - U4617-930 (Incl. It 21,34) - Custom Style - prior to 8/93 Hood Assem. - ABB - U4617-930 (Incl. Items 21,34) Deluxe Style- after 8/93
	42252338	Hood Assem. - NAA - U4715-930 (Incl. Items 21,34) - Custom
	42252350	Hood Assem. - NAA - U4717-930 (Incl. Items 21,34) - Custom
	42252341	Hood Assem. - NAA - U4717-930 (Incl. Items 21, 34) - Custom
	42252359	Motor Retainer Cap - L.H.
38	36131090	Motor - (P - 202)
39	43576142	Dirt Finder Lamp
40	27313101	Belt
41	38528027	Rug Nozzle Rib Shoe
42	13261AY	Main Body Assem. - Custom (Incl. Items 24,25,28,42)
43	42243002	Main Body Assem. - Dlx. Incl. It. 24,25,28,42
	42243001	Nozzle Height Adj. Cam Lever (Use wheel assem. 43248059)
44	38563011	Wheel Shaft - AY (Use 43248059)
45	38452089	Wheel - AG
46	32563012	Wheel Retainer
47	43248059	Agitator - (P - 204)
48	36131056	Agitator - (P - 203) - U4715-930
49	48414081 48414079	Bottom Plate - AG
50	37245108	Front Wheel Assem. (Incl It. 45, 46, 47)
51	43248059	Cam Actuator Spring
52	34572002	

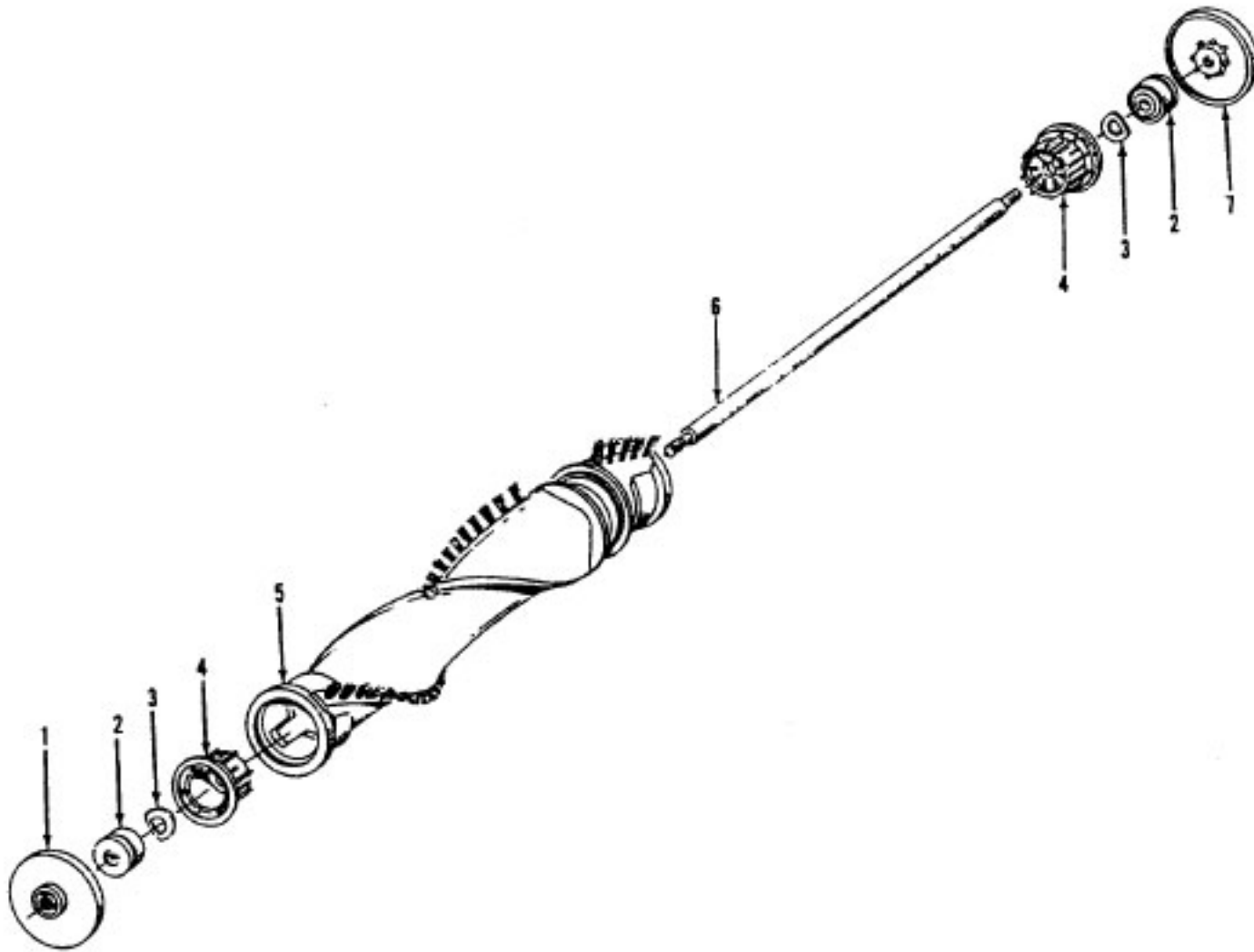
ITEMS NOT ILLUSTRATED

3944201P Cord Wrap

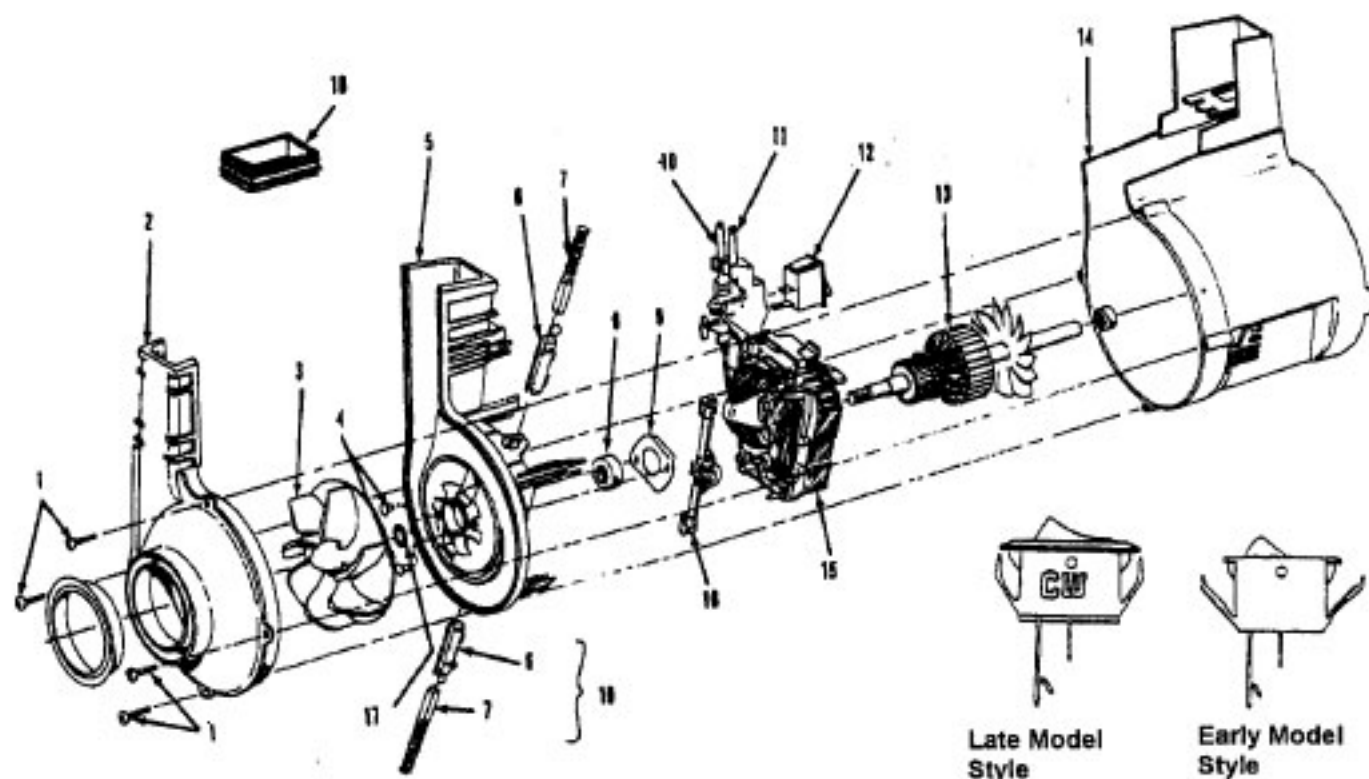
PACKAGING MATERIAL

56511352 Owner Manual
56511395 Owner Manual - U4617-930, U4715-930,
U4717-930, U4617-920
58175077 Carton
58175094 Carton - U4617-930, U4715-930
58185184 Carton - Common
58348005 Carton Support
58385019 Cleaner Support - U4709-910, U4617-920,
U4617-930
58347025 Carton

NOTE: Late model U4709-910 units are date coded 8/92 or later.



Ref. No.	Part No.	Description
	48414079	Agitator Assem. Comp. - AG
1	36423016	Thread Guard - RH
2	43267002	Agitator Bearing Assem. (2)
3	21347003	Conical Washer (2)
4	36422022	Agitator End (2)
5	N/A	Agitator Body
6	32724013	Agitator Shaft
7	36423017	Thread Guard - LH - AG



Ref. No.	Part No.	Description
	43576142	Motor Assem. Comp.
	43576181	Motor Assem. Comp. (Replaced by 43576204)
1	214793DA	Screw-Self Tapping (4)
2	38736033	Fan Chamber
3	38755030	Fan
4	N/A	Rivet - Semi Tubular (2)
5	N/A	Motor Housing Assem.
6	N/A	Motor Brush Holder (2)
7	N/A	Motor Brush Assem. (2)
8	N/A	Bearing
9	N/A	Bearing Retainer
10	36914004	Switch Bus Bar
11	39116005	Attachment Terminal
12	28218043	Switch Assem. - Early Models (Prior to 5/96)
	28161062	Switch Assem. - Late Models (After 5/96)
13	N/A	Armature/Bearing Assem.
14	37194046	Motor End Cap Assem. - MW
15	N/A	Field Assem.
16	N/A	Lamp Holder Assem.
17	21312793	Washer
18	38783020	Duct Seal
19	41311016	Motor Brush Holder Assem.

ITEMS NOT ILLUSTRATED

- 38781013 Duct Seal (8 1/2" Long adhesive backed foam seal used on early models in place of item 18)
- 54821001 Tape (Roll)