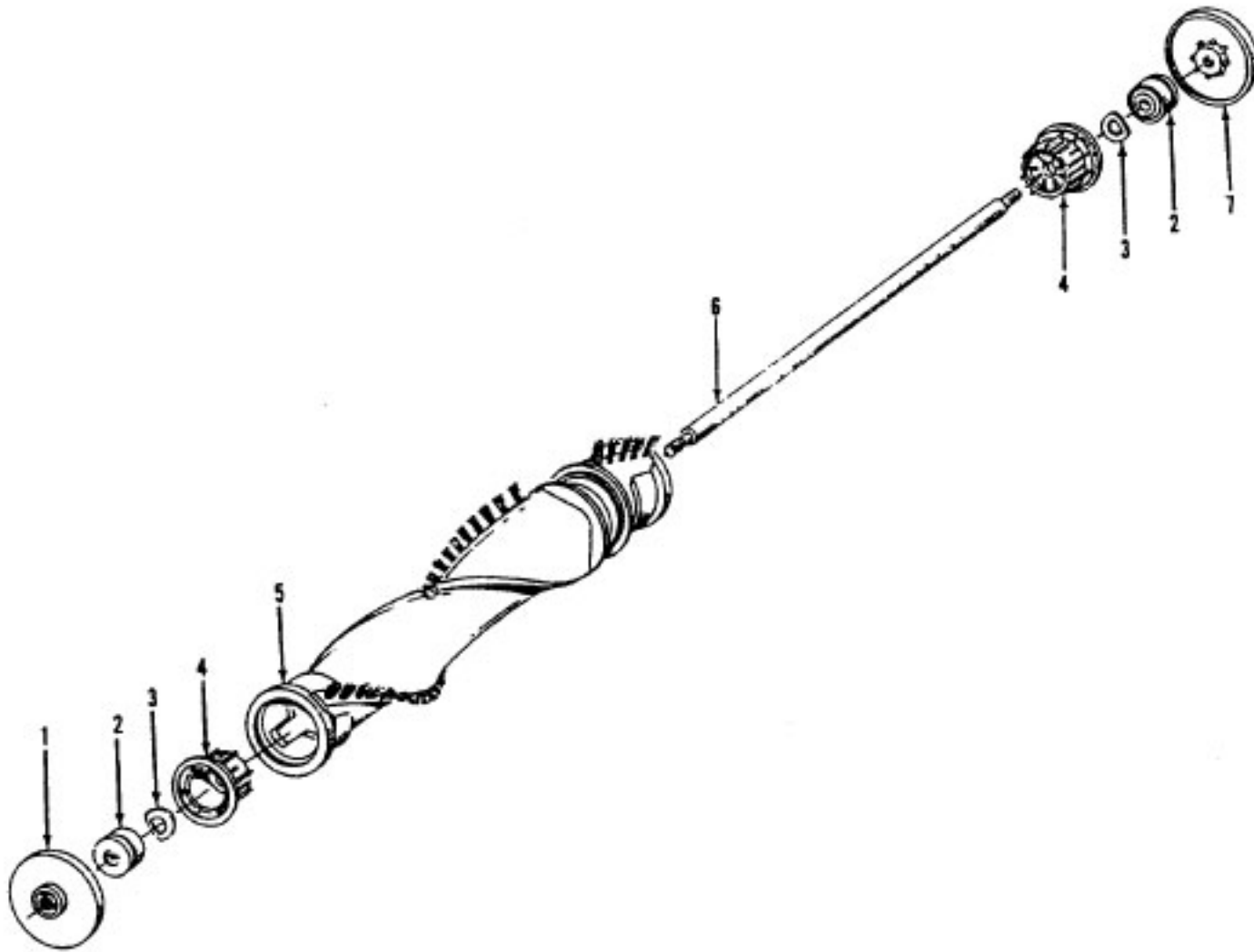
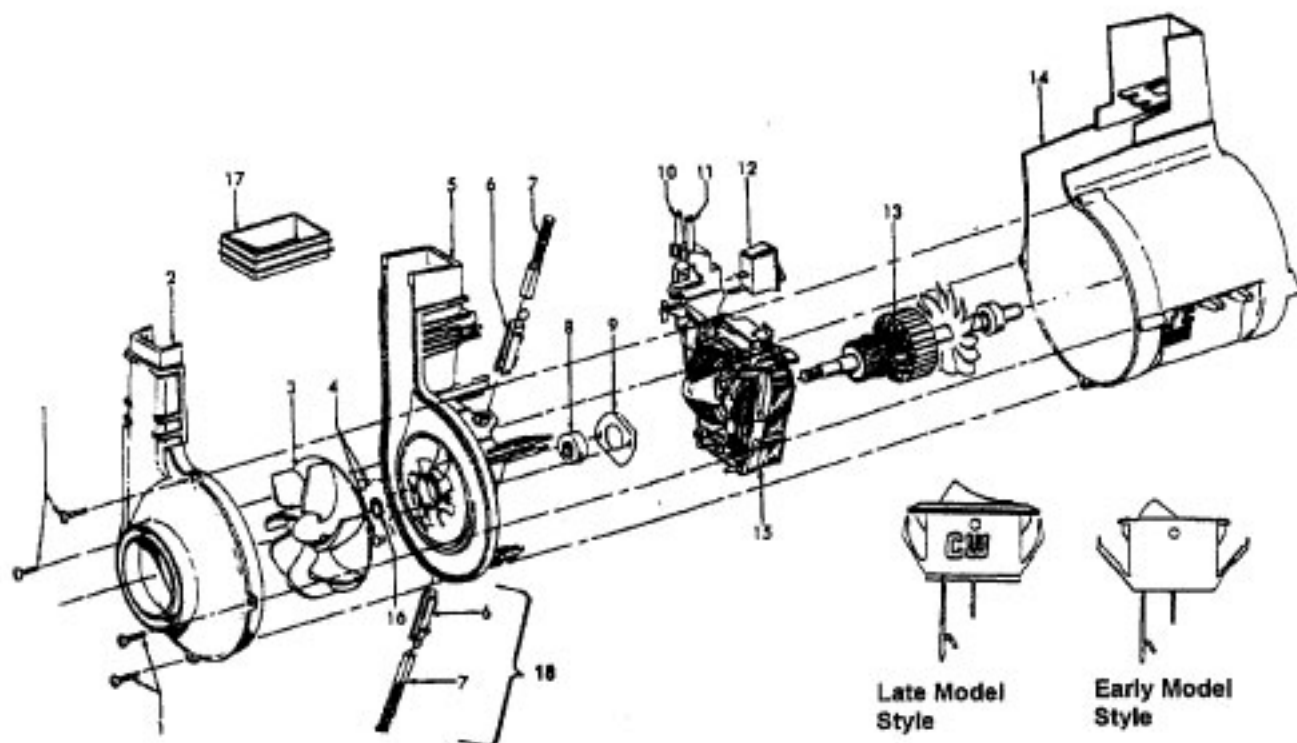


Ref. No.	Part No.	Description	Ref. No.	Part No.	Description
1	48863142	Upper Handle Assem. - MW	24	21362006	Speed Nut
2	37911079	Handle Cap - ABE	25	42252303	Hood Assem. - AAR
3	46388027	Attachment Cord - AG	26	37246046	Panel - MW
4	38335020	Bag Strap Spring - AY	27	36131090	Motor Retainer Cap - L.H.
5	36425071	Bag Strap - ABE	28	43576141	Motor (P.201)
6	36425067	Jacket Support - Upper - MW	29	38528027	Belt
7	43674191	Outer Jacket - Sewn - AAP/MN	30	13261AY	Rug Nozzle Rib Shoe
8	38456036	Switch Control Rod - AG	31	34572002	Cam Actuator Spring
9	39464005	Lower Handle	32	42243001	Main Body Assem. (incl. Items 22,23,24,26)
10	40201085	Nut & Bolt	33	38563011	Nozzle Height Adj. Cam
11	36425068	Jacket Support - Lower - ABE	34	38452089	Lever (Use wheel assem. 43248059)
12	31523012	Rear Wheel Shaft	35	32563012	Wheel Shaft - AY (Use 43248059)
13	38522011	Rear Wheel - AG	36	38521023	Wheel - AG
14	38567008	Cam Actuator - KE	37	36131056	Wheel Retainer - BZ
15	38421070	Indicator Knob - ABE	38	37245017	Bottom Plate
16	38458022	Handle Release Lever	39	48414079	Agitator (P. 203)
17	38784016	Seal	40	43248059	Front Wheel Assem. (Incl. It. 34, 35, 36)
18	36131057	Motor Retainer Cap - R.H.			
19	21447217	Screw - Self Tapping			
20	38351013	Spring			
21	4010001A	Throw - Away Bag - 3 Pk.			
22	37257013	Door Assem. - AAR (Incl. Items 23,24)			
23	38785011	Seal			
			ITEMS NOT ILLUSTRATED		
			3944201P		Cord Wrap
			56511352		Owner Manual
			59185184		Carton
			58346004		Front Support
			58353009		Rear Support



Ref. No.	Part No.	Description
	48414079	Agitator Assem. Comp. - AG
1	36423016	Thread Guard - RH
2	43267002	Agitator Bearing Assem. (2)
3	21347003	Conical Washer (2)
4	36422022	Agitator End (2)
5	N/A	Agitator Body
6	32724013	Agitator Shaft
7	36423017	Thread Guard - LH - AG



Ref. No.	Part No.	Description
	43576141	Motor Assem. Comp.
1	N/A	Screw-Self Tapping (4)
2	38736033	Fan Chamber
3	38755030	Fan
4	N/A	Rivet-Semi Tubular (2)
5	N/A	Motor Housing Assem.
6	N/A	Motor Brush Holder (2)
7	N/A	Motor Brush Assem. (2)
8	N/A	Bearing
9	N/A	Bearing Retainer
10	36914004	Switch Bus Bar
11	39116005	Attachment Terminal
12	28218043	Switch Assem. - Early Models (Prior to 5/96)
	28161062	Switch Assem. - Late Models (After 5/96)
13	N/A	Armature/Bearing Assem.
14	37194046	Motor End Cap Assem.
15	N/A	Field Assem.
16	21312793	Washer
17	38783020	Duct Seal
18	41311016	Motor Brush Holder Assem. -

ITEMS NOT ILLUSTRATED

38781013	Duct Seal (8 1/2" Long adhesive backed foam seal used on early models in place of item 17)
54821001	Tape (Roll)

Cleaning Tools

Ref. No.	Part No.	Description
1	43414145	Dusting Brush - Friction
2	38614029	Furniture Nozzle - AG
3	38617024	Crevice Tool
4	38634078	Ext. Tube
5	39454059	Hand Grip - AG
6	43434228	Hose Comp. - AAP
7	38655005	Hose Connector - AAP

ITEMS NOT ILLUSTRATED

59814017 Cleaning Tool Carton

