



CLEAN AND LIGHT

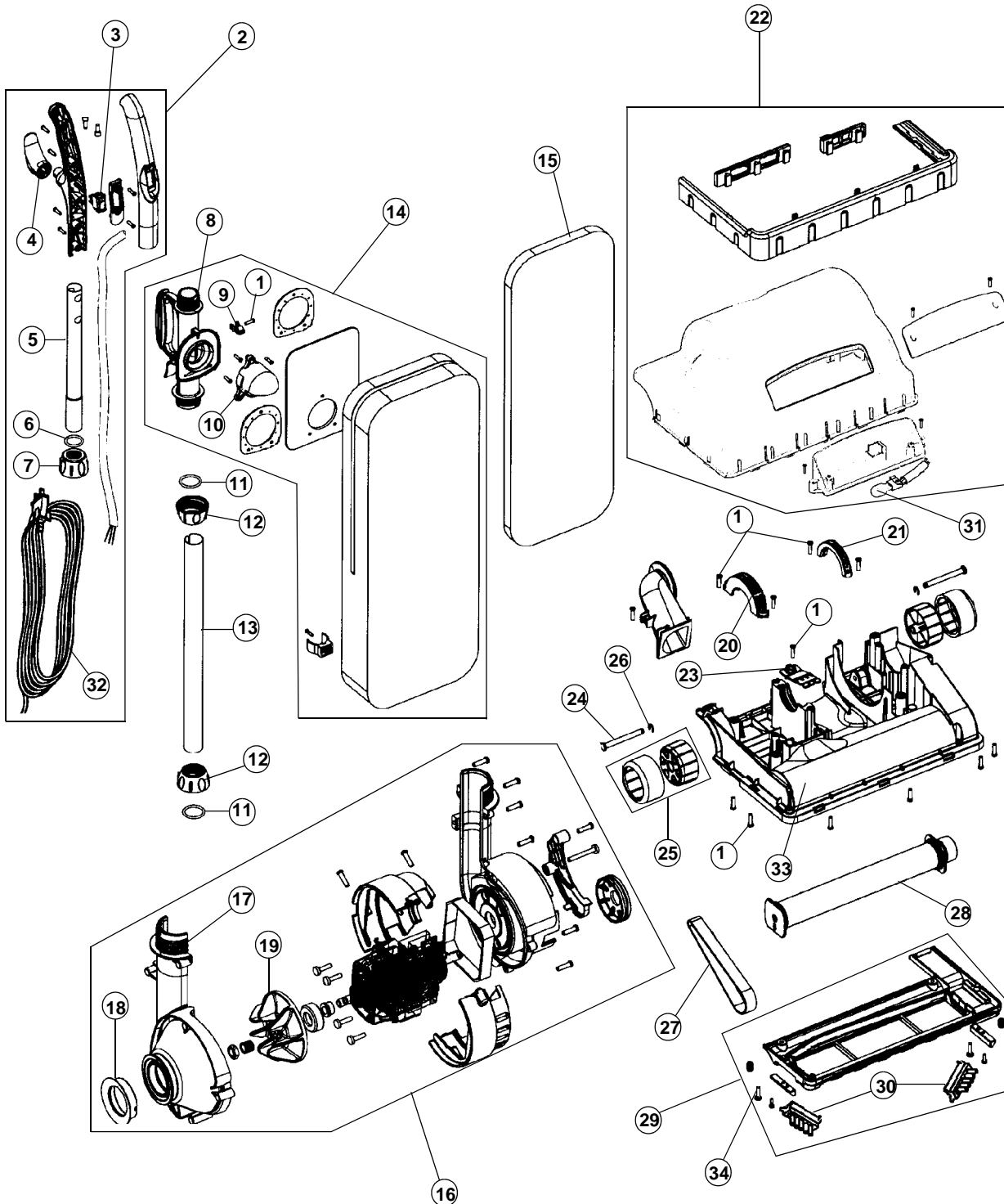
Signature

lightweight

ASSEMBLY SCHEMATIC

MODEL NO.

U4707
U4730





CLEAN AND LIGHT

Signature

lightweight

PART LISTING

MODEL No.

U4707

U4730

ITEM	PART NUMBER	MODELS TO FIT	PART DESCRIPTION
1	1503819000	U4707, U4730	BODY SCREW
2	93004700	U4707	UPPER HANDLE ASSEMBLY
		U4730	UPPER HANDLE ASSEMBLY
3	1JR0010000	U4707, U4730	SWITCH
4	1JR0012000	U4707, U4730	CORD HOOK
5	1JR0018000	U4707, U4730	UPPER HANDLE TUBE
6	1JR0027000	U4707, U4730	HANDLE O-RING GASKET -SMALL ROUND
7	1JR0026000	U4707, U4730	UPPER HANDLE COLLAR
8	1JR0028000	U4707, U4730	CARRYING HANDLE TUBE GRIP
9	1JR0029000	U4707, U4730	CORD CLIP
10	1JR0035000	U4707, U4730	DIRT INLET
11	1RYV650000	U4707, U4730	HANDLE O-RING GASKET - V SHAPE
12	1JR0025000	U4707, U4730	LOWER HANDLE COLLAR
13	1JR0023000	U4707, U4730	LOWER HANDLE TUBE
14	93004750	U4707	CLOTH BAG ASSEMBLY - HEPA
		U4730	CLOTH BAG ASSEMBLY - HEPA
15	H-4010102B	U4707, U4730	TYPE B BAG -ALLERGEN
	4010103B	U4707, U4730	TYPE B BAG - 3 PACK / ALLERGEN
	H-43655119	U4707, U4730	TYPE B BAG - HEPA
16		U4707, U4730	COMPLETE MOTOR ASSEMBLY
17	1JR0015000	U4707, U4730	MOTOR FAN COVER
18	1JR0014000	U4707, U4730	FAN COVER SEAL
19	1JR0013000	U4707, U4730	FAN
20	1JR0031000	U4707, U4730	LEFT CLAMP
21	1JR0030000	U4707, U4730	RIGHT CLAMP
22	93004760	U4707	NOZZLE COVER WITH BUMPERS
		U4730	NOZZLE COVER WITH BUMPERS
23	1JR0022000	U4707, U4730	HANDLE STOPPER
24	1JR0021000	U4707, U4730	WHEEL PIN
25	1JR0019000	U4707, U4730	WHEEL ASSEMBLY
26	1JR0020000	U4707, U4730	WHEEL E-CLIP
27	H-40201318	U4707, U4730	STYLE 18 BELT - 2PACK
28	2JR0010000	U4707, U4730	BRUSH ROLL ASSEMBLY
29	1JR0032000	U4707, U4730	NOZZLE GUARD ASSEMBLY
30	1JR0033000	U4707, U4730	EDGE CLEANER ASSEMBLY
31	1920906000	U4707, U4730	BULB #906



CLEAN AND LIGHT
Signature
lightweight

PART LISTING

ITEM	PART NUMBER	MODELS TO FIT	PART DESCRIPTION
32	1LV1101000	U4707, U4730	POWER CORD
33	513175001	U4707, U4730	NOZZLE BASE
34	1JV0103000	U4707, U4730	SCREW - NOZZLE GUARD

MODEL No.

U4707

U4730