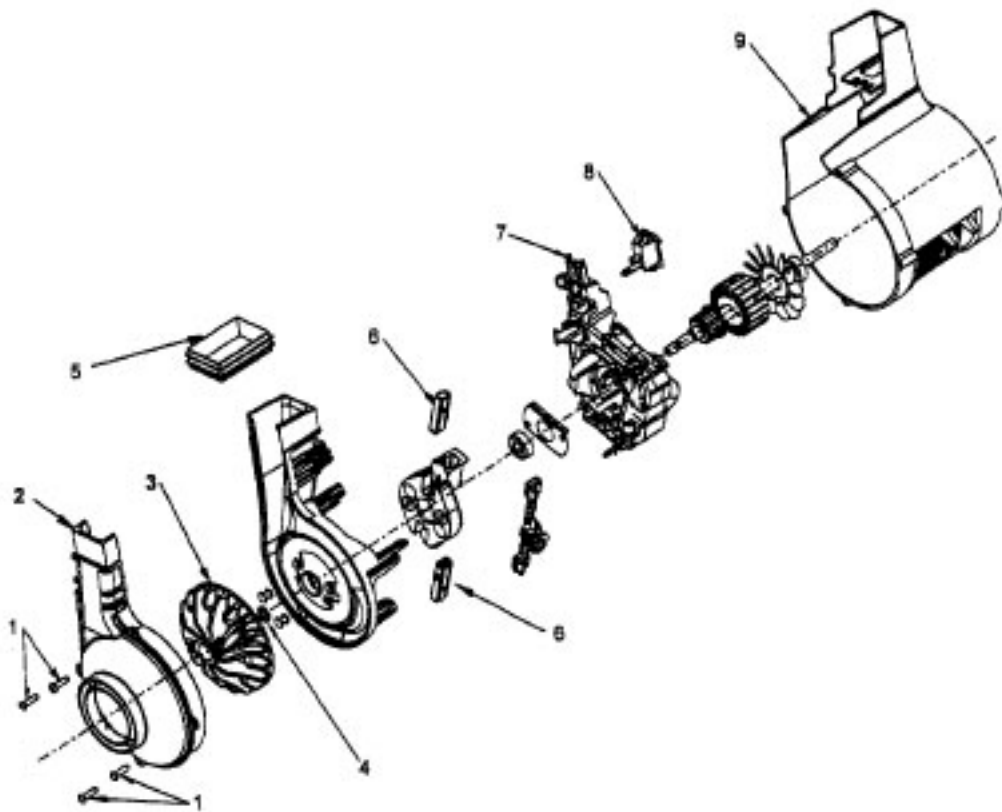


Ref. No.	Part No.	Description
1	48663204	Upper Handle Assembly
2	37911078	Handle Cap
3	46388043	Cord Assembly - 30'
4	38458046	Switch Rod - Lower
5	37257147	Tool Door
6	36433125	Tool Holder
7	21447220	Screw - Tool Holder
8	4010100Z	T.A.B. - 3 pk. - Allergen Filtration
9	37255021	Bag Housing
10	39464025	Lower Handle
11	36425081	Bag Housing Bracket
12	36433113	Lower Hose Support
13	43434101	Hose Assembly
14	37258051	Latch Plug
15	36151013	Bag Door Latch
16	38355008	Spring
17	Note: All Bag Doors include items 14, 15 & 16	
	37254179	Bag Door Assembly - ADK - U5258-900
	37254178	Bag Door Assembly - ADS U5254-900
18	40110003	Final Filter (Inc. 2 filters)
19	37257274	Filter Retainer - ADK - U5258-900
	37257273	Filter Retainer - ADS - U5254-900
20	36151025	Latch
21	38426090	Latch Button - AG
22	21447218	Screw - Hood (4)
23	Note: All Hoods include item 24	
	42252B28	Hood Assembly - ADJ - U5258-900
	42252B27	Hood Assembly - ADR -U5254-900
24	39383108	Lens
25	21447262	Screw - Trilobular (10)
26	36131110	Motor Retainer Cap - Metal - LH
27	38656033	Duct Cover
28	38784016	Seal
29	43576200	Motor Assembly - 12 Amp- (P. 364)
30	38458053	Handle Release Lever
31	27313101	Bulb
32	38567014	Indicator Knob
33	38567027	Cam Actuator
34	38522011	Rear Wheel (2)
35	31523012	Rear Wheel Shaft (2)
36	37241160	Main Body (Inc. It. 34, 35) (Also order gasket number 34123056)
37	38528040	Agitator Belt
38	48414061	Agitator Assembly
39	13261AY	Rug Nozzle Rib Shoe
40	38351012	Spring
41	38563013	Nozzle Height Adj. Cam
42	43248052	Front Wheel Assembly

Ref. No.	Part No.	Description
43	38452089	Lever (Use wheel assem. 43248052)
44	38718005	Valve Gate
45	34572002	Cam Actuator Spring
46	39511004	Litter Picker (2)
47	37245034	Bottom plate
48	38783020	Duct Seal
	Items not illustrated	
	40201085	Nut and Bolt Assem. (Handle)
	3944201P	Cord Wrap
	34123056	Gasket - Main Body (located between motor and main body - LH side)
	Tools	
	38634078	Extension Tube
	38614036	Furniture Nozzle
	38617026	Crevice Tool
	43414146	Dusting Brush
	Packaging	
	56511B21	Owner Manual
	58185184	Carton - Common

Motor - 43576200 - 12 Amp
43576199 - 12 Amp
43576204 - 8 Amp
43576205 - 12 Amp

Breathe Easy - WidePath Models
Elite / Legacy Style Models
Breathe Easy with headlight Models
Non- Headlight Elite / Legacy Models



Ref. No.	Part No.	Description
	43576200	Motor Assembly Complete
	43576199	Motor Assembly Complete
	43576204	Motor Assembly Complete
	43576205	Motor Assembly Complete
1	214793DA	Screw-Self Tapping (4)
2	38736033	Fan Chamber
3	43565006	Fan/Nut Assembly
4	21312793	Washer
5	38783020	Duct Seal
6	41311022	Motor Brush Assem. (2)
7	36914006	Switch Bus Bar
8	28161068	Switch Assembly
9	37194046	Motor End Cap Assembly -ABE