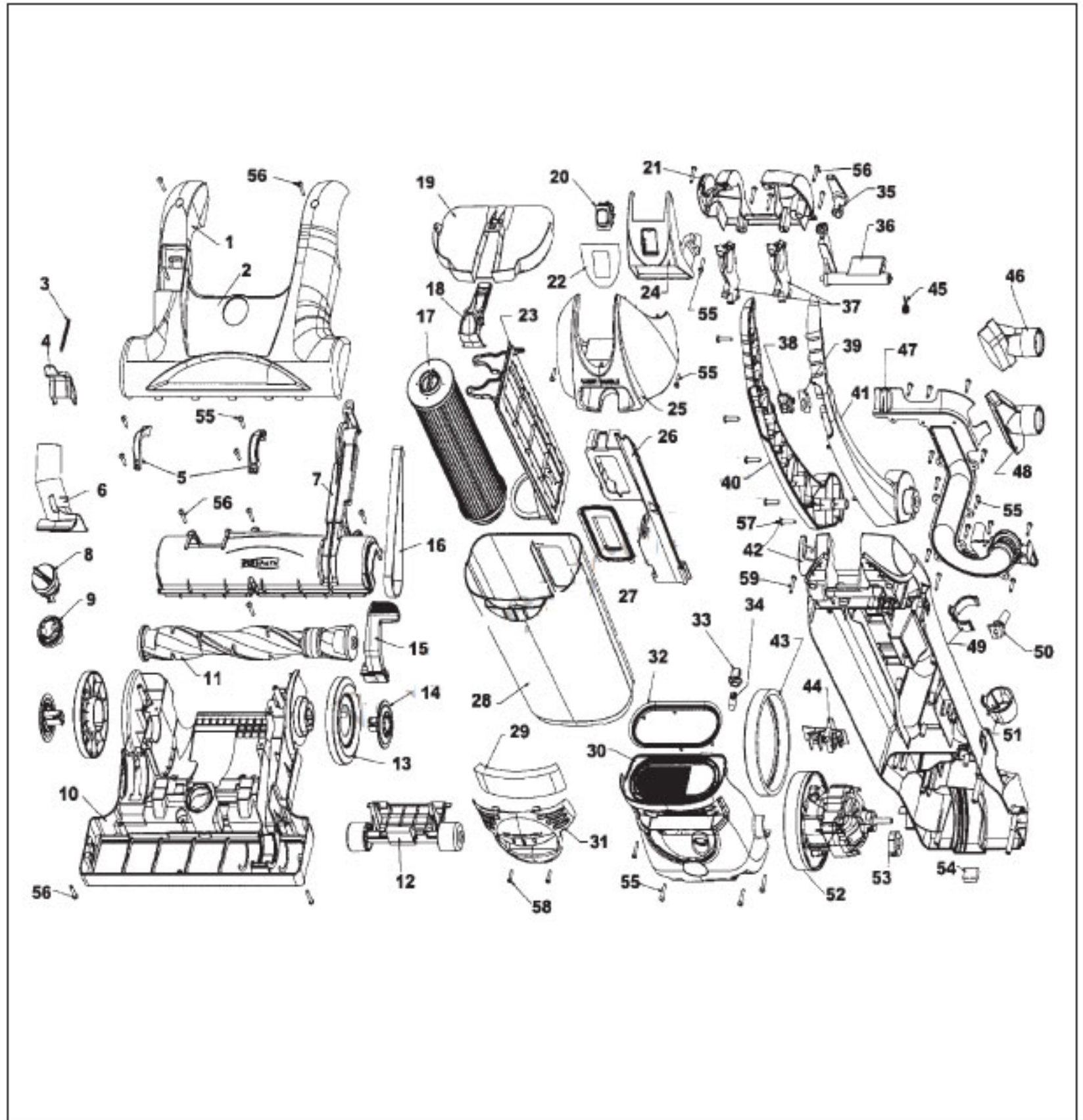


HOOVER Original

BAGLESS UPRIGHT 15 IN. EmPower

Models U5260-900, U5262-900, U5266-900, U5268-900



Original **HOOVER**

BAGLESS UPRIGHT 15 IN. EmPower
Models U5260-900, U5262-900, U5266-900, U5268-900

KEY	PART NO.	DESCRIPTION	KEY	PART NO.	DESCRIPTION
1	H-37253416	Hood - AGP	40	H-39453003	Upper Handle R.H.
2	H-52115230	Nameplate - U5260-900	41	H-39453004	Upper Handle L.H.
2	H-52115227	Nameplate - U5262-900	42	H-37259021	Dirt Cup Housing
2	H-52115228	Nameplate - U5266-900	43	H-36322037	Motor Mount - Large
2	H-52115229	Nameplate - U5268-900	44	H-46851035	PCB Assembly
3	H-38335026	Debris Spring	45	H-38355016	Pivot Latch Spring
4	H-37257312	Debris Door - AGR	46	H-43414195	Dusting Brush Assembly - AGR
5	H-36131118	Trunnion Cover	47	H-38656039	Dirt Duct Cover - ABE
6	H-38646087	Lower Duct - AGS	48	H-38614044	Furniture Nozzle - AGR
7	H-37243047	Agitator Housing	49	H-36433191	Wand Holder Upper
8	H-38563021	Knob Height Adjustment Cam Upper	50	H-36215028	Cord Protector
9	H-38563022	Nozzle Height Adjustment Cam Lower	51	H-36433192	Wand Holder Lower
10	H-37242146	Main Body - AGS	52	H-43576188	Motor Assembly
11	H-48414132	Agitator Assembly Complete	53	H-36322030	Motor Mount - Small
12	H-43248062	Front Wheel Assembly	54	H-36218023	Wire Grommet
13	H-38522088	Rear Wheel - AGS	55	H-21447266	Screw With 6 Lobe
14	H-37912018	Wheel Hub - AGR	56	H-21447072	Screw
15	H-38458073	Handle Release Lever - AGR	57	H-21447274	Screw With 6 Lobe
16	H-38528040	Belt	58	H-017001FW	Screw (Lens)
17	H-40140201	Cartridge Filter Pack	59	H-21447273	Screw With 6 Lobe
18	H-36151034	Latch Actuator - MG U5262-900	Items Not Illustrated		
18	H-36151035	Latch Actuator - LH U5260-900	H-013261AY	Rib Shoe	
18	H-36151036	Latch Actuator - AGV U5266-900	H-27618508	Wire Connector	
18	H-36151037	Latch Actuator - AG U5268-900	H-28382097	Thermal Protector	
19	H-37249051	Dirt Cup Lid - ADV (Does Not Include Item 18)	H-34123058	PCB Support	
20	H-28166001	Switch	H-38617031	Crevice Tool Long - AGR	
21	H-37258177	Handle Retainer Cover - AGS	H-38634092	Extension Tube - AGS	
22	H-51371030	Switch Mount Nameplate	H-38781060	Rope Seal Gasket - 35 In.	
23	H-36426067	Filter Support	H-39411001	Foam Muffler - Motor	
24	H-37258178	Switch Mount	H-46383342	Attachment Cord Assembly 31 Ft.	
25	H-39458048	Handle Cover - AGP	H-49129024	Turbine Hand Tool - U5262-900, U5266-900, U5268-900	
26	H-37258176	Wire Cover	H-49811117	Lead Wire Purple - (Cord To Switch)	
27	H-38785020	Inlet Seal - Dirt Cup	H-49811125	Lead Wire Yellow - (From Switch To PC Board)	
28	H-38775112	Dirt Cup - AGU - U5262-900	H-49811126	Lead Wire Black - (PC Board To Slide Switch)	
28	H-38775113	Dirt Cup - AGT - U5260-900	H-43431226	Hose Assembly	
28	H-38775114	Dirt Cup - AGW - U5266-900	H-43434042	Hose Assembly - Extra - Reach	
28	H-38775115	Dirt Cup - ML - U5268-900	H-51 375136	Upper Handle Nameplate - U5260-900	
29	H-38765024	Final Filter	H-51 375137	Upper Handle Nameplate - U5262-900	
30	H-37196175	Motor Cover - AGP	H-51375138	Upper Handle Nameplate - U5266-900	
31	H-39383120	Lens/ Final Filter Retainer - AGT U5260-900	H-51375139	Upper Handle Nameplate - U5268-900	
31	H-39383121	Lens/ Final Filter Retainer - AGU U5262-900			
31	H-39383122	Lens/ Final Filter Retainer - AGW U5266-900			
31	H-39383123	Lens/ Final Filter Retainer - AG U5268-900			
32	H-38785021	Exhaust Seal			
33	H-27341505	Lamp Socket W/Wires			
34	H-27313107	Headlight			
35	H-39442048	Cord Wrap - AGS			
36	H-36151038	Pivot Latch Lever - LH U5260-900			
36	H-36151039	Pivot Latch Lever - MG U5262-900			
36	H-36151040	Pivot Latch Lever - AGV U5266-900			
36	H-36151041	Pivot Latch Lever - AG U5268-900			
37	H-36131121	Trunnion Upper Handle			
38	H-38421078	Surge Button			
39	H-28179106	Surge Switch with Leads			