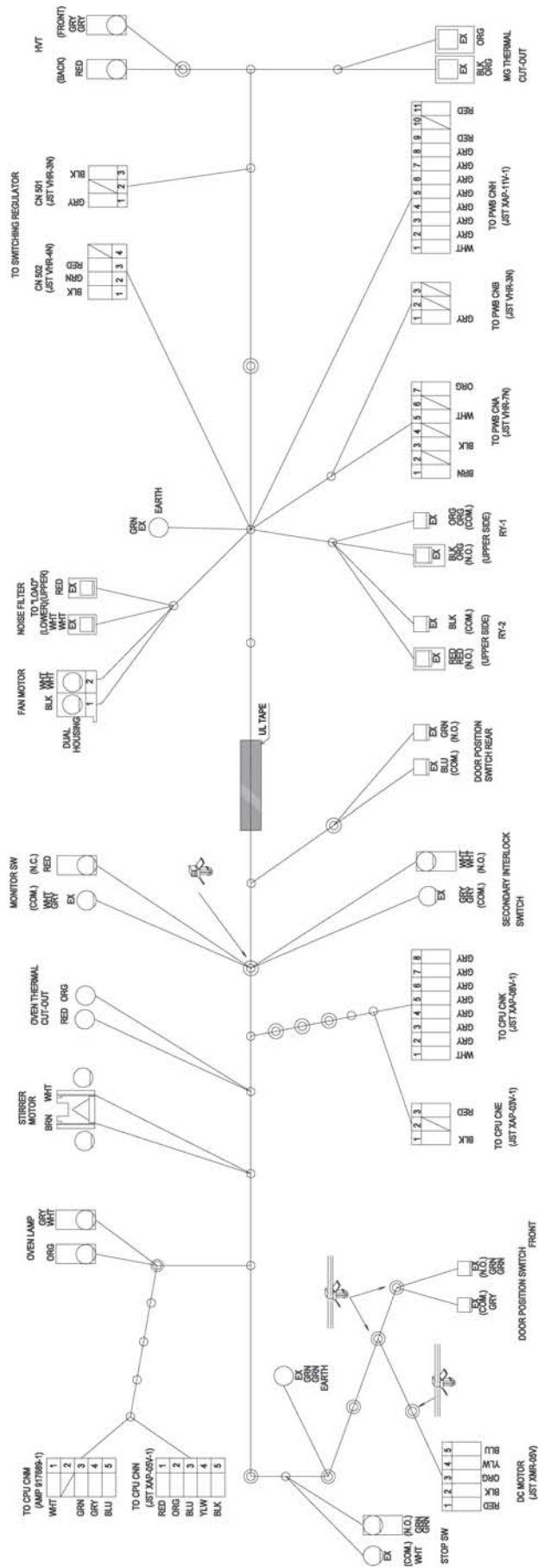
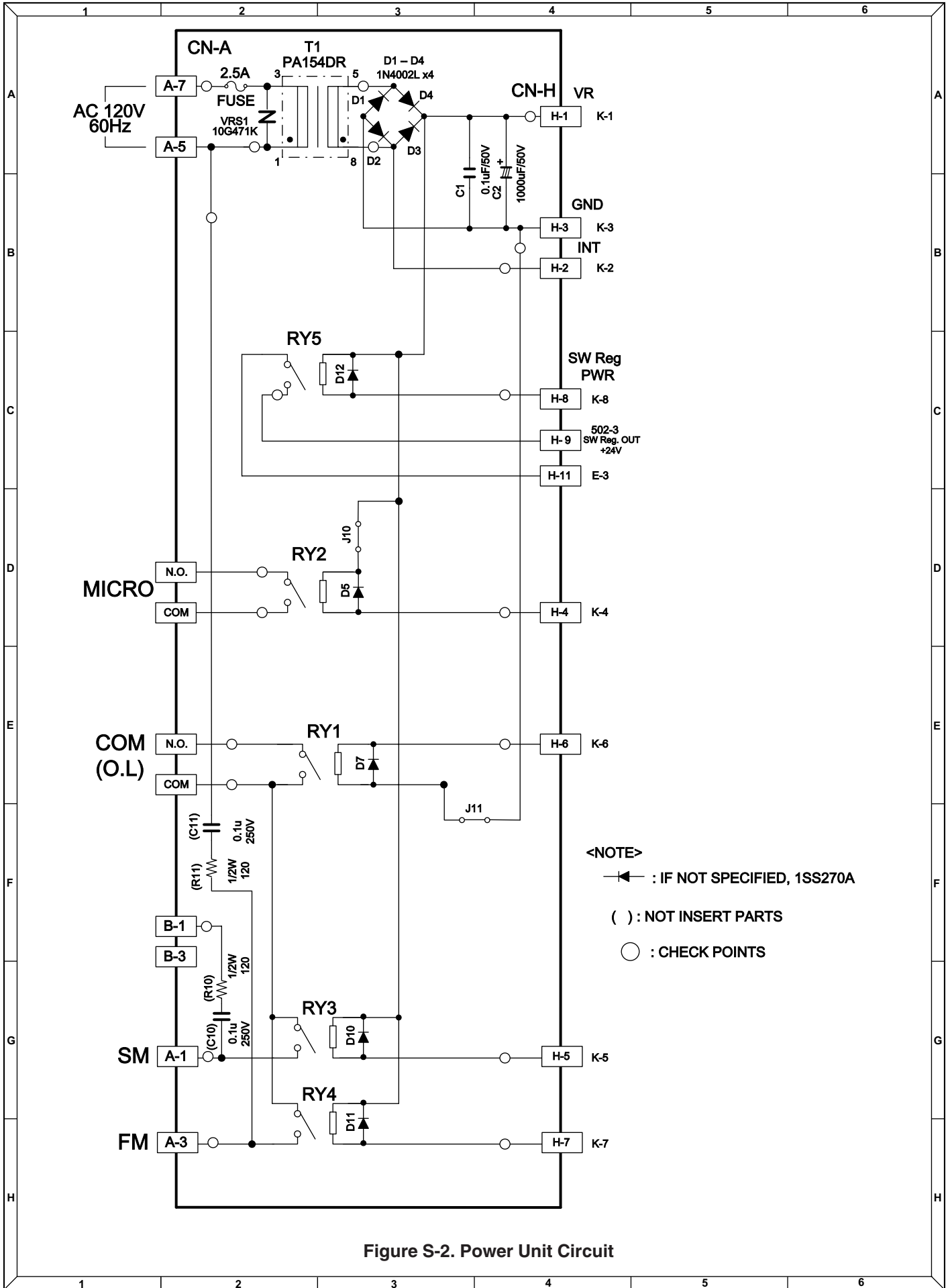


MICROWAVE DRAWER WIRING DIAGRAM

KB-6015KS
KB-6015KK
KB-6015KW





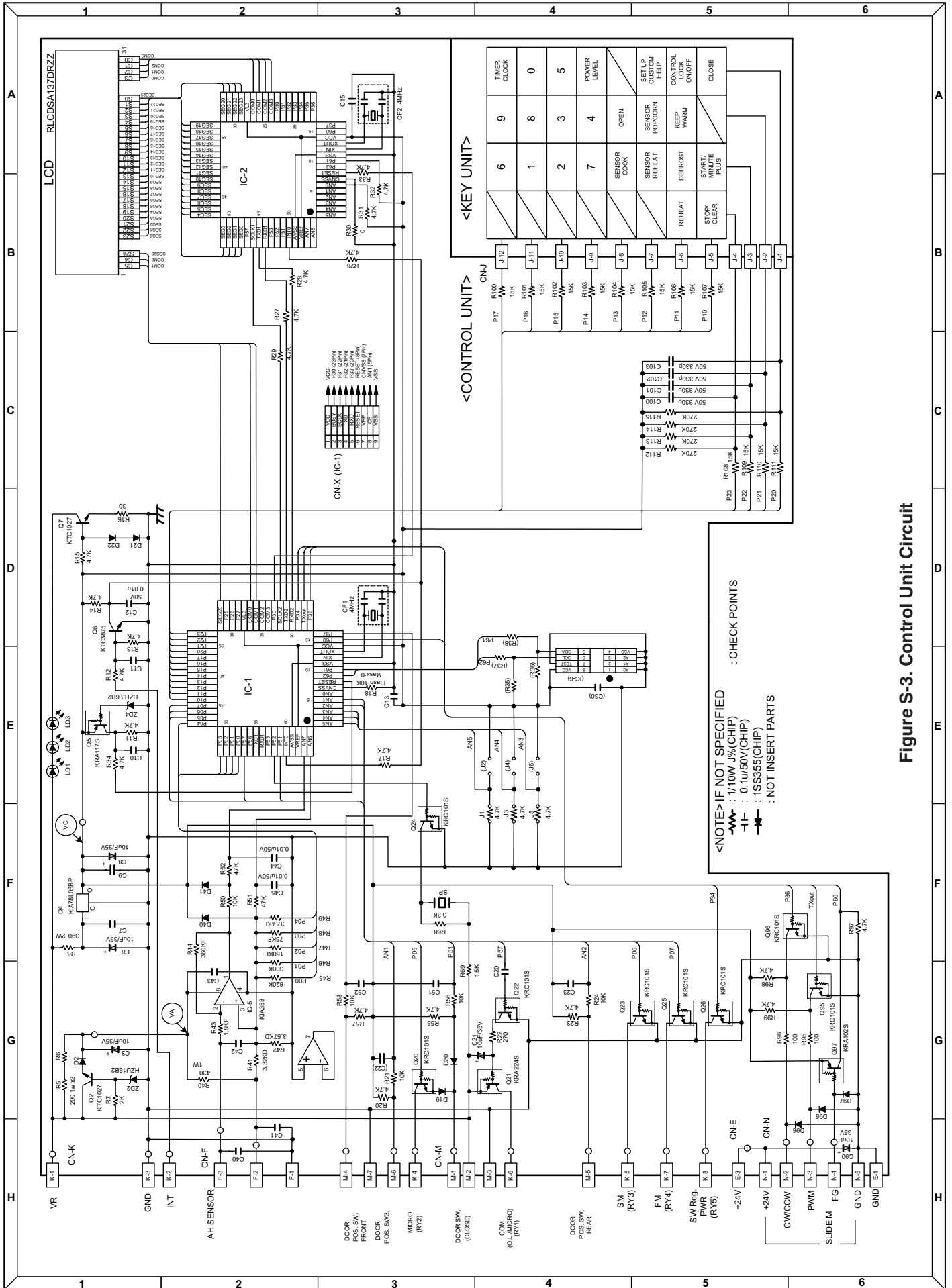


Figure S-3. Control Unit Circuit

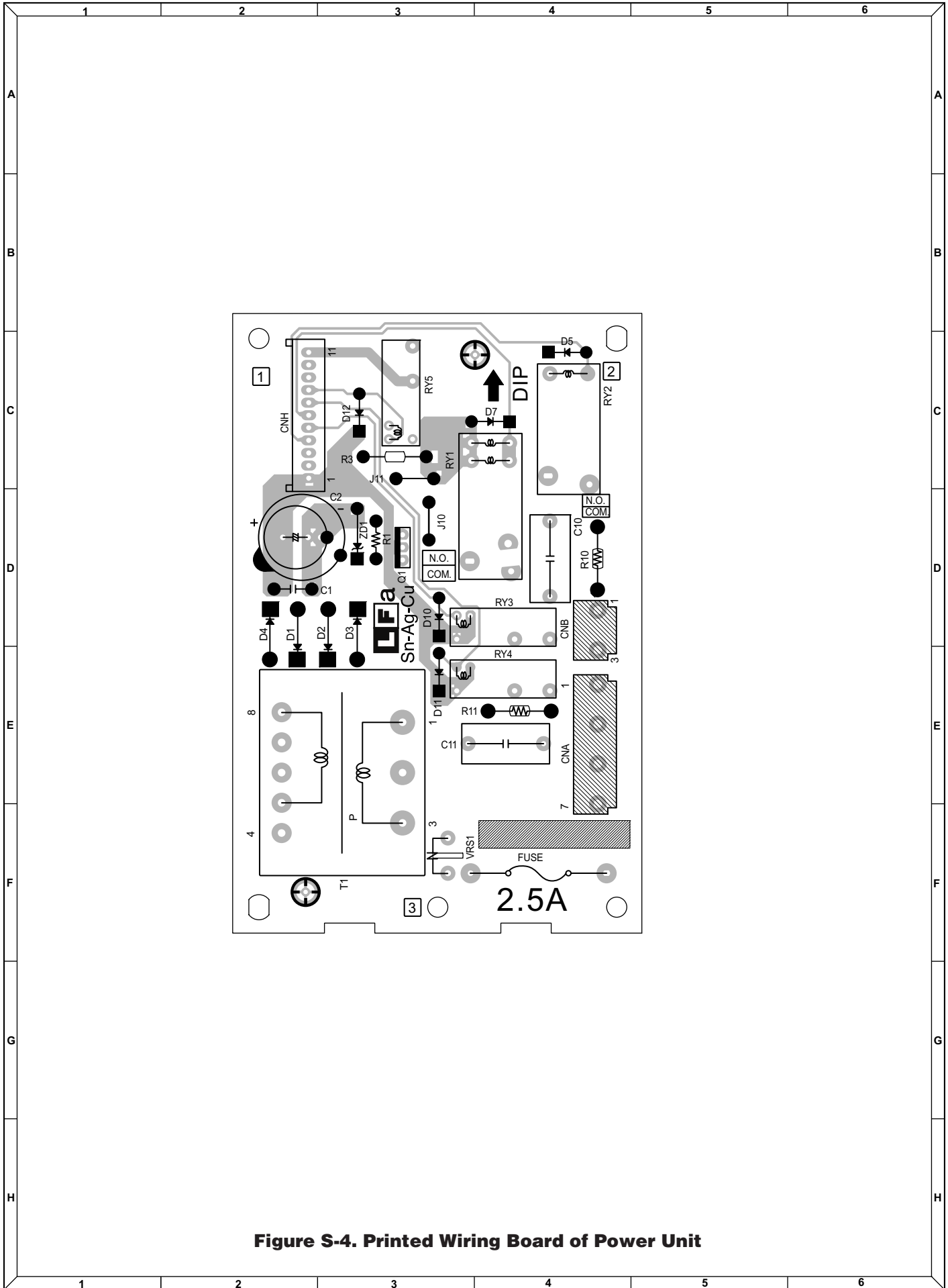


Figure S-4. Printed Wiring Board of Power Unit

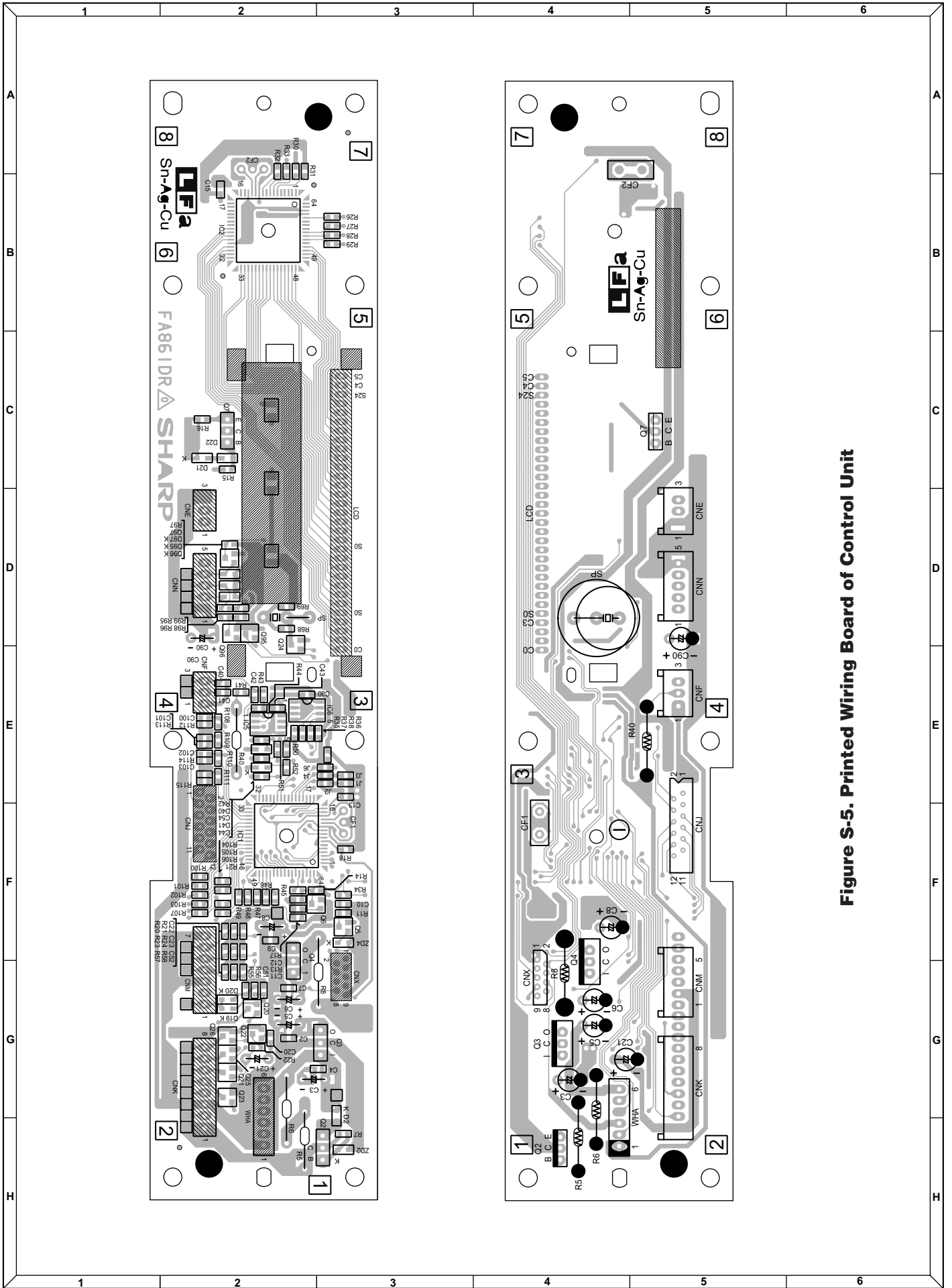


Figure S-5. Printed Wiring Board of Control Unit

CONTROL PANEL PARTS LIST

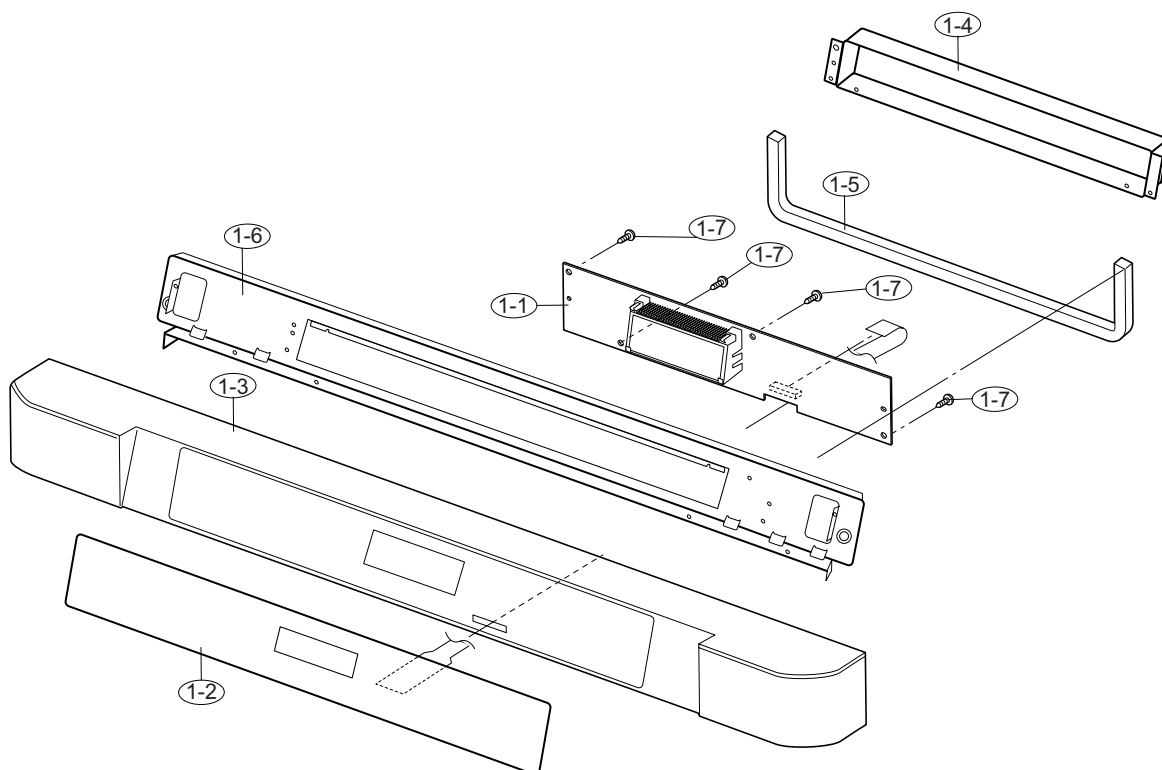
Note: The parts marked "Δ" may cause undue microwave exposure.

The parts marked "*" are used in voltage more than 250V.

"§" MARK: PARTS DELIVERY SECTION

| REF. NO. | PART NO. | § | DESCRIPTION | Q'TY | CODE |
|----------|---------------|---|--------------------------------|------|------|
| 1-1 | DPWBFB136MRU0 | M | Control unit | 1 | BY |
| 1-2 | FUNTKB444MRK0 | M | Key unit [KB6015KS] [KB6015KK] | 1 | AS |
| 1-2 | FUNTKB446MRK0 | M | Key unit [KB6015KW] | 1 | AS |
| 1-3 | FPNLCB502MRK0 | M | C/P frame assy [KB6015KS] | 1 | AX |
| 1-3 | FPNLCB504MRK0 | M | C/P frame assy [KB6015KK] | 1 | AX |
| 1-3 | FPNLCB505MRK0 | M | C/P frame assy [KB6015KW] | 1 | AX |
| 1-4 | PCOVPB140MRP0 | M | C/P cover | 1 | AM |
| 1-5 | PCUSGB059MRP0 | M | C/P cushion | 1 | AB |
| 1-6 | LANGTB111MRP0 | M | C/P angle | 1 | AM |
| 1-7 | XEPSD30P10XS0 | M | Screw | 4 | AA |

CONTROL PANEL



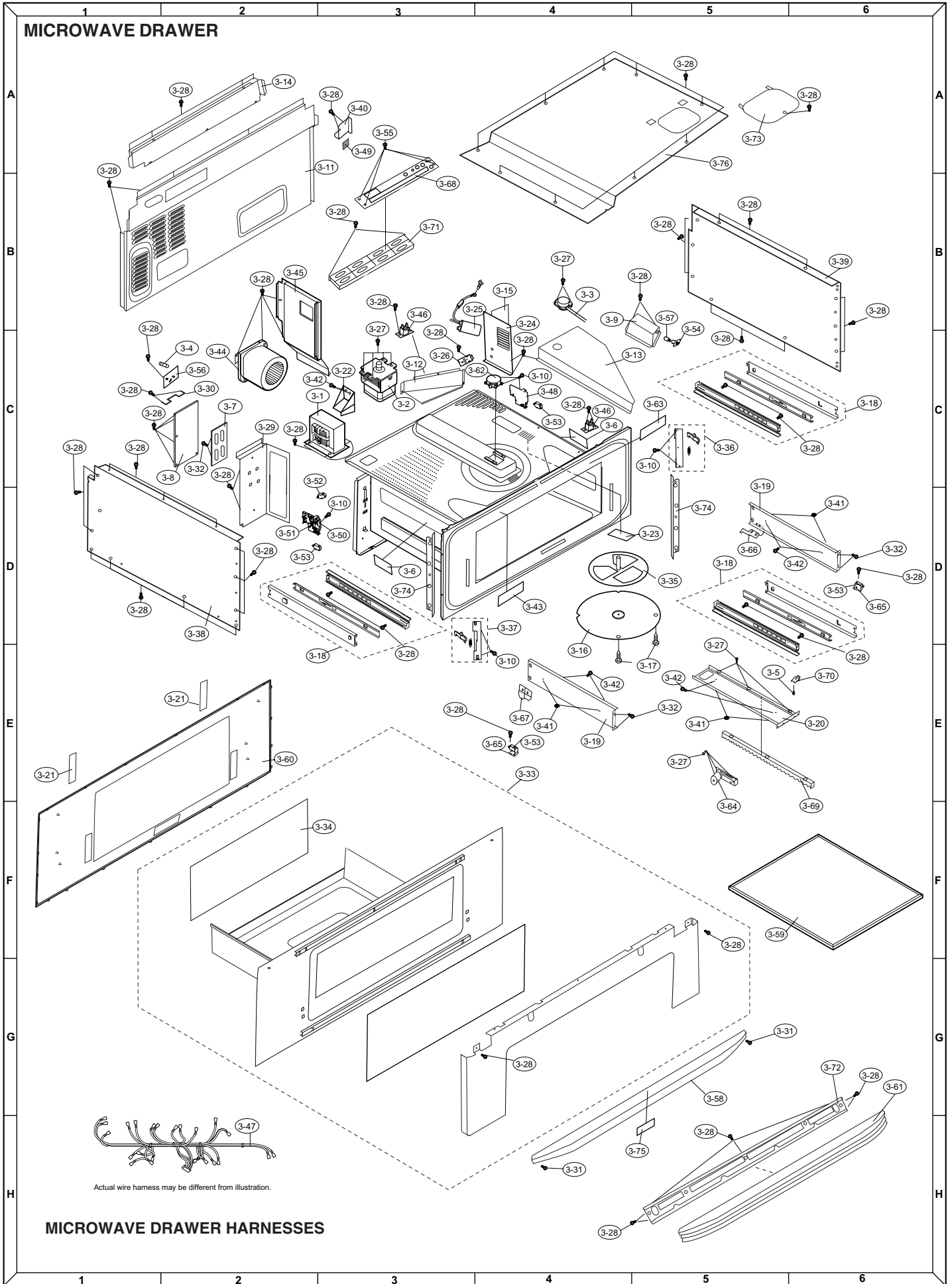
MICROWAVE DRAWER PARTS LIST

**Note: The parts marked "Δ" may cause undue microwave exposure.
The parts marked "*" are used in voltage more than 250V.**

"§" MARK: PARTS DELIVERY SECTION

| REF. NO. | PART NO. | § | DESCRIPTION | Q'TY | CODE |
|----------|----------------|---|--|------|------|
| Δ 3- 1 | RTRN-B084MRE0 | M | Transformer | 1 | BE |
| 3- 2 | RV-MZA288WRE0 | M | Magnetron | 1 | BK |
| 3- 3 | FDTCTA234WRKZ | M | Sensor assy | 1 | AP |
| 3- 4 | FFS-BA018/KIT | M | Monitor switch (V-16G-2C25) with fuse (20A) assembly | 1 | AF |
| 3- 5 | XOTSE40P08000 | M | Screw | 1 | AA |
| 3- 6 | TCAUAB050MRR0 | M | Monitor caution label | 2 | AD |
| 3- 7 | LHLD-B028MRF0A | M | Power supply unit holder | 1 | AH |
| 3- 8 | DPWBFB137MRU0 | M | Power supply | 2 | BD |
| 3- 9 | LANGTB073MRP0 | M | Oven lamp angle | 1 | AF |
| 3-10 | LX-CZ0052WRE0 | M | Screw/washer | 6 | AA |
| 3-11 | GCABDB006MRP0 | M | Back plate | 1 | BB |
| 3-12 | PDUC-B141MRP0 | M | Mag duct | 1 | AE |
| 3-13 | PDUC-B142MRP0 | M | Sensor duct | 1 | AK |
| 3-14 | PDUC-B004MRP0 | M | Exhaust duct A | 1 | AK |
| 3-15 | PDUC-B148MRP0 | M | Exhaust duct B | 1 | AF |
| 3-16 | FCOVBP002MRY0 | M | Stir cover assy | 1 | AM |
| 3-17 | PCLICB003MRE0 | M | Canoe clip | 3 | AB |
| 3-18 | MSLIFB001/KIT | M | Slide rail | 3 | AU |
| 3-19 | LANGTB120MRP0 | M | Door support angle A | 2 | AK |
| 3-20 | LANGTB113MRP0 | M | Door support angle B | 1 | AK |
| 3-21 | GCOVHB051MRF0 | M | Door support cover | 2 | AB |
| 3-22 | PSKR-B018MRP0 | M | Magnetron air guide | 1 | AC |
| 3-23 | PFILWB005MRP0 | M | Lamp filter | 1 | AB |
| 3-24 | LANGTB076MRP0 | M | Partition angle | 1 | AK |
| * 3-25 | FC-QZB048MRK0 | M | HVC assy | 1 | AP |
| 3-26 | LBNDKB007MRP0 | M | HVC band | 1 | AB |
| 3-27 | XCBSD30P08000 | M | Screw | 3 | AA |
| 3-28 | XOTSE40P12000 | M | Screw | 79 | AA |
| 3-29 | LANGTB114MRP0 | M | Partition angle L | 1 | AK |
| 3-30 | LANGQA581WRPZ | M | Noise unit angle | 1 | AD |
| 3-31 | XJTSD40P16000 | M | Screw | 4 | AA |
| 3-32 | XEPSD30P10XS0 | M | Power unit assy screw | 2 | AA |
| 3-33 | DDORFB098MRK0 | M | Door assy [KB6015KS] | 1 | BD |
| 3-33 | DDORFB102MRK0 | M | Door assy [KB6015KK] | 1 | BD |
| 3-33 | DDORFB103MRK0 | M | Door assy [KB6015KW] | 1 | BD |
| 3-34 | PSHEPB184MRE0 | M | Sealer film | 1 | AQ |
| 3-35 | FFAN-B008MRK0 | M | Stirrer fan assy | 1 | AK |
| 3-36 | FANGTB010MRK0 | M | Latch angle assy R | 1 | AH |
| 3-37 | FANGTB011MRK0 | M | Latch angle assy L | 1 | AH |
| 3-38 | GCABUB146MRP0 | M | Side cabinet L | 1 | AY |
| 3-39 | GCABUB145MRP0 | M | Side cabinet R | 1 | AY |
| 3-40 | PCOVBP143MRP0 | M | Air cover | 1 | AE |
| 3-41 | LX-NZB006MRE0 | M | Cap nut | 6 | AA |
| 3-42 | XHTSD40P08RV0 | M | Screw | 4 | AA |
| 3-43 | TCAUKB001MRR0 | M | Stirrer cover cleaning label | 1 | AA |
| 3-44 | FMOTEAA499WRKZ | M | Fan motor | 1 | AZ |
| 3-45 | LANGTB077MRP0 | M | Fan motor angle | 1 | AG |
| 3-46 | RTHM-A135WRZZ | M | Thermal cut-out | 2 | AD |
| 3-47 | FW-VZB267MRE0 | M | Harness assy | 1 | BE |
| 3-48 | PHOK-A079WRF0 | M | Latch hook R | 1 | AH |
| 3-49 | PCUSGB066MRP0 | M | Cushion | 1 | AB |
| 3-50 | PHOK-A080WRF0 | M | Latch hook L | 1 | AF |
| 3-51 | MLEVPA214WRF0 | M | Switch lever L | 1 | AK |
| 3-52 | QSW-MA--WRE0 | M | Monitor switch - must replace by assy. (3-4) | 1 | AE |
| 3-53 | QSW-MA085WRE0 | M | Switch | 4 | AE |
| 3-54 | QSOCLB010MRE0 | M | Lamp socket | 1 | AG |
| 3-55 | XEPSD30P10XS0 | M | Screw | 4 | AA |
| 3-56 | FPWBFA380WRKZ | M | Noise filter unit | 1 | AM |
| 3-57 | RLMPTA071WRE0 | M | Oven lamp | 1 | AF |
| 3-58 | JHNDPB058MRT0 | M | Door handle [KB6015KS] | 1 | BC |
| 3-58 | JHNDPB059MRT0 | M | Door handle [KB6015KK] | 1 | BC |
| 3-58 | JHNDPB060MRT0 | M | Door handle [KB6015KW] | 1 | BC |

| REF. NO. | PART NO. | § | DESCRIPTION | Q'TY | CODE |
|----------|---------------|---|--------------------------|------|------|
| 3-59 | FGLSPB002MRY0 | M | Oven tray assy | 1 | BK |
| 3-60 | GCOVHB052MRF0 | M | Choke cover | 1 | AM |
| 3-61 | PDIF-B053MRT0 | M | Louver [KB6015KS] | 1 | AX |
| 3-61 | PDIF-B054MRT0 | M | Louver [KB6015KK] | 1 | AX |
| 3-61 | PDIF-B055MRT0 | M | Louver [KB6015KW] | 1 | AX |
| 3-62 | RMOTDA261WRZZ | M | Stirrer motor | 4 | AH |
| 3-63 | TCAUHB009MRR0 | M | User caution label | 1 | AA |
| 3-64 | FANGTB012MRK0 | M | Auto drawer gear assy | 1 | BH |
| 3-65 | LANGTB105MRP0 | M | Switch angle | 2 | AE |
| 3-66 | MACT-B001MRF0 | M | Actuator R | 1 | AD |
| 3-67 | MACT-B002MRF0 | M | Actuator L | 1 | AD |
| 3-68 | DPWBFC441WRKZ | M | SW power supply | 1 | CM |
| 3-69 | NGERRB002MRF0 | M | Rack gear | 2 | BS |
| 3-70 | FROLPB029MRK0 | M | Door support roller assy | 1 | AG |
| 3-71 | LHLD-B031MRF0 | M | Switch PSU holder | 1 | AC |
| 3-72 | LANGTB108MRP0 | M | Louver angle | 1 | AK |
| 3-73 | PCOVPB130MRP0 | M | Cover | 1 | AG |
| 3-74 | LANGTB109MRP0 | M | Side angle | 2 | AG |
| 3-75 | TLAB-B056MRR0 | M | Menu label | 1 | AA |
| 3-76 | PCOVPB142MRP0 | M | Top cover | 1 | AW |



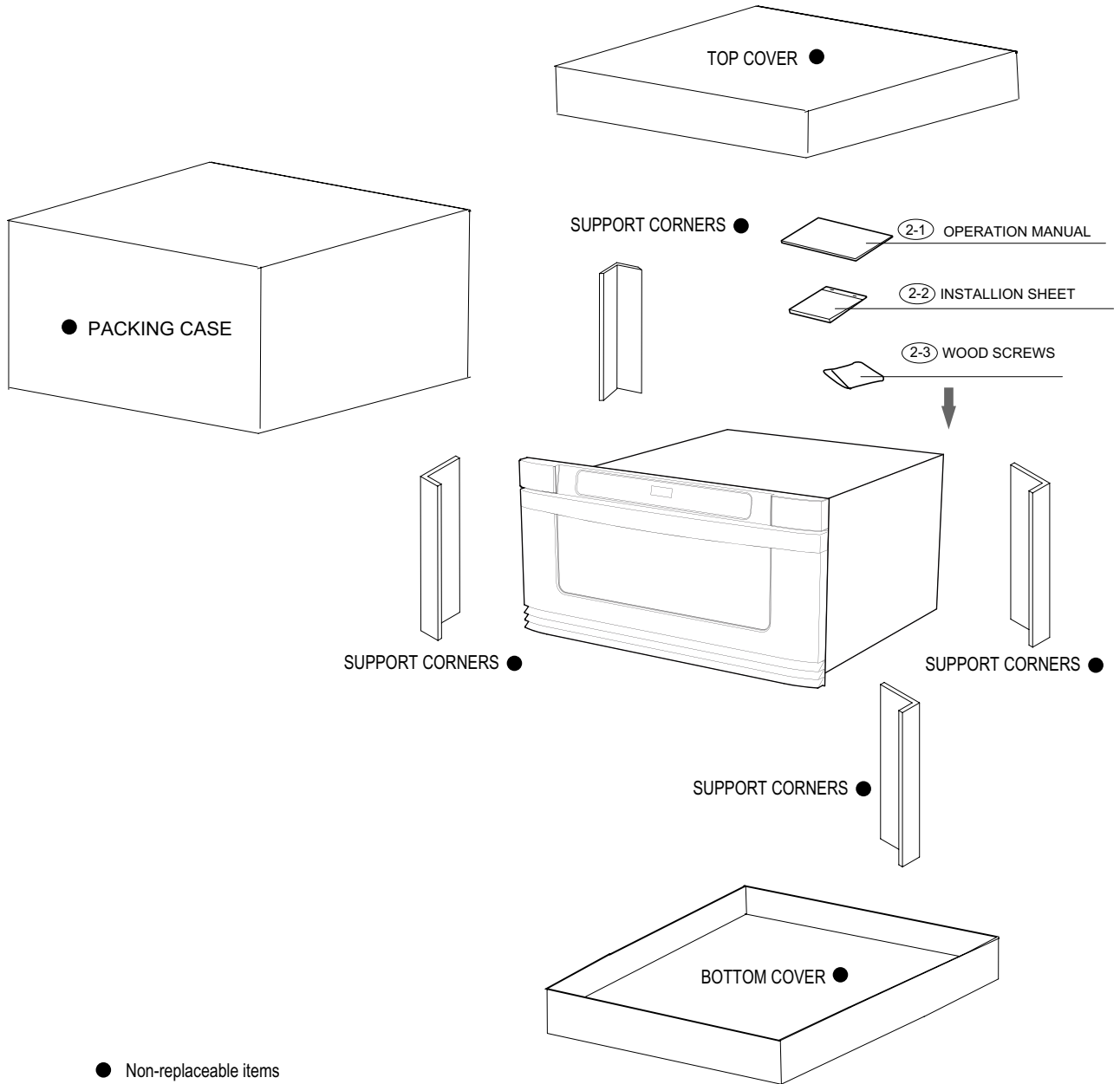
PACKING PARTS LIST

Note: The parts marked "Δ" may cause undue microwave exposure.
The parts marked "*" are used in voltage more than 250V.

"§" MARK: PARTS DELIVERY SECTION

| REF. NO. | PART NO. | § | DESCRIPTION | Q'TY | CODE |
|----------|---------------|---|--------------------|------|------|
| 2- 1 | TINSEB416MRK0 | M | Operation manual | 1 | AM |
| 2- 2 | TINSEB417MRR0 | M | Installation sheet | 1 | AD |
| 2- 3 | XTPUW50P35000 | M | Wood screws | 4 | BC |

PACKING



SHARP

COPYRIGHT © 2005 BY SHARP CORPORATION

ALL RIGHTS RESERVED.

No part of this publication may be reproduced, stored in retrieval systems, or transmitted in any form or by any means, electronic, mechanical, photocopying, recording, or otherwise, without prior written permission of the publisher.