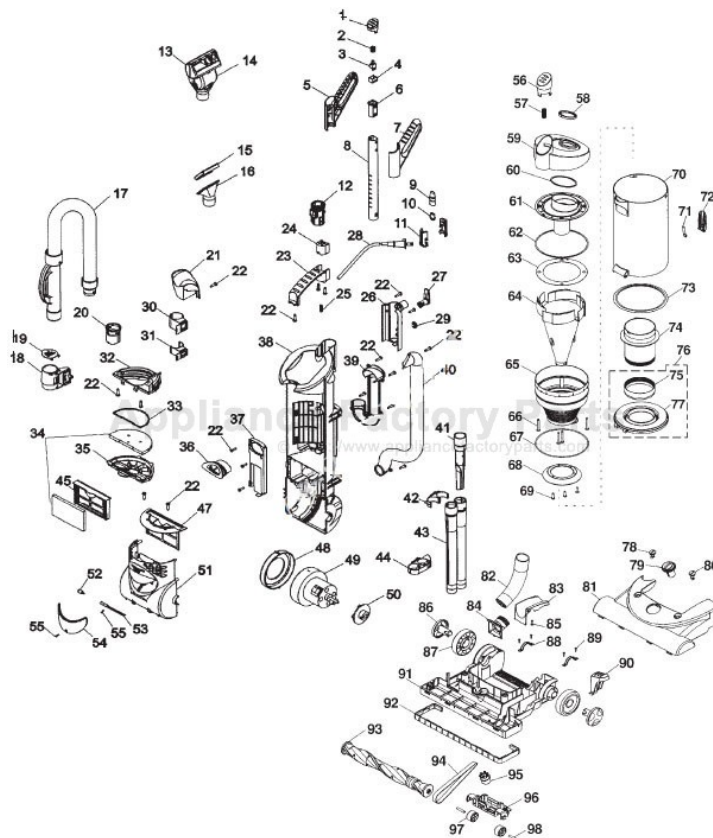


This Owner's Manual is provided and hosted by [Appliance Factory Parts](#).



HOOVER U5810-900 Owner's Manual

[Shop genuine replacement parts for HOOVER
U5810-900](#)



[Find Your HOOVER Vacuum Cleaner Parts - Select From 1456 Models](#)

----- Manual continues below part list -----

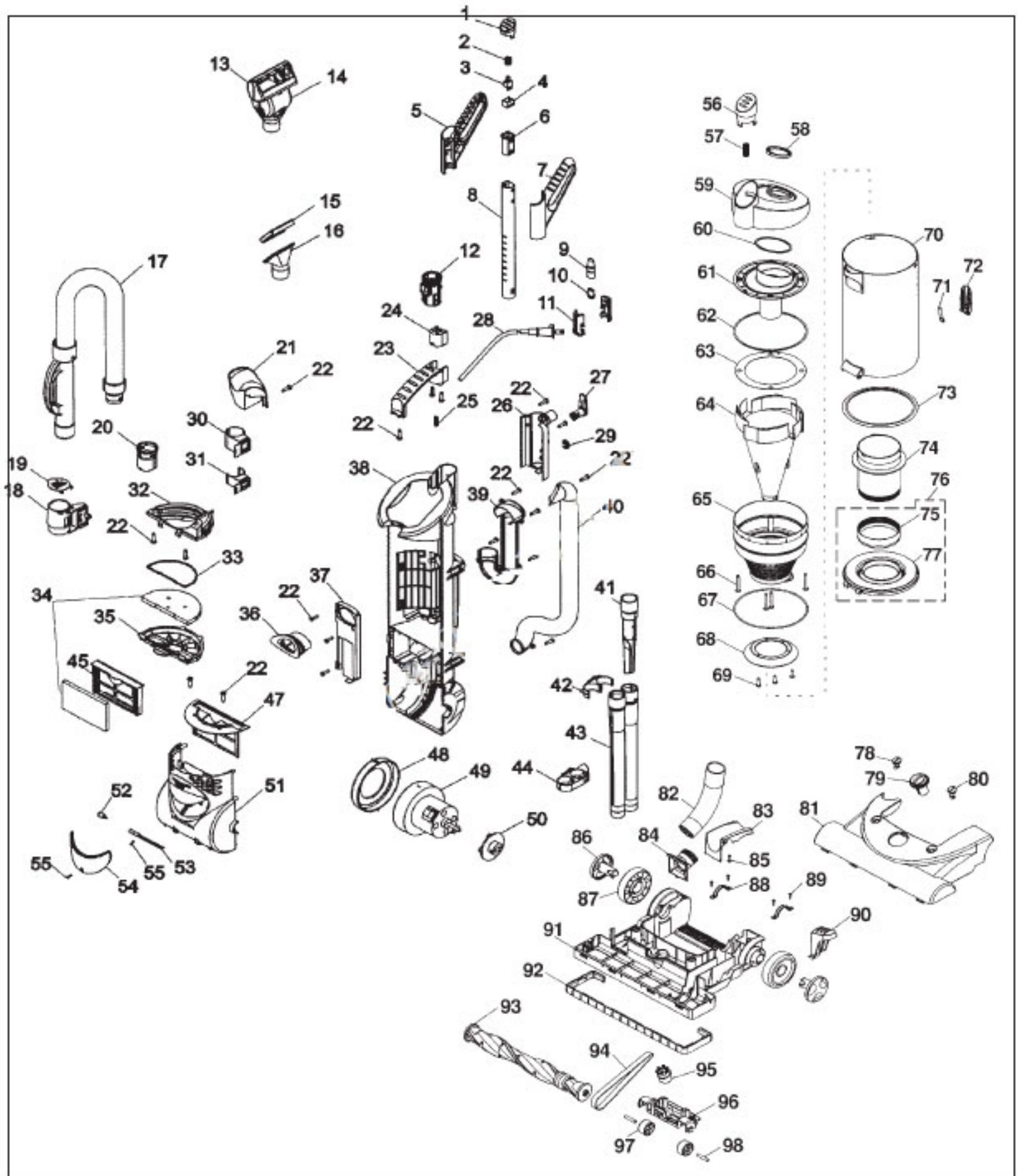
Available Replacement Parts for HOOVER U5810-900

H-38528040	BELT VACUUM HOOVER OEM (1 PACK)
HR-2015	ROLLER BRUSH ASSY
HR-3500	HEADLIHT BULB

HOOVER Original

FUSION BAGLESS

Model U5180-900



Original **HOOVER**

FUSION BAGLESS

Model U5180-900

KEY	PART NO.	DESCRIPTION	KEY	PART NO.	DESCRIPTION
1	H-93001707	Switch Button	51	H-93001661	Motor Cover
2	H-93001706	Switch Spring	52	H-27313107	Bulb
3	H-93001705	Switch	53	H-93001660	Lamp Socket
4	H-93001704	Right Handle	54	H-93001659	Lens
5	H-93001699	Left Handle	55	H-93001729	Self-Tapping Screw
6	H-93001702	Switch Sleeve	56	H-93001635	Dirt Cup Release Button
7	H-93001704	Handle Right	57	H-93001656	Dirt Cup Release Spring
8	H-93001698	Telescopic Tube	58	H-93001647	Dirt Cup Outlet Seal
9	H-93001717	Female Connector	59	H-93001648	Dirt Cup Cover
10	H-93001700	Male Connector	60	H-93001649	Dirt Cup Cover Seal
11	H-93001701	Male Connector Fixing Plate	61	H-93001650	Cyclone Dust
12	H-93001697	Handle Sleeve	62	H-93001651	Seal - Duct B
13	H-93001712	Upper Housing	63	H-93001652	Seal - Duct A
14	H-49129024	Turbine Hand Tool	64	H-93001653	Cone Separator
15	H-93001716	Removable Brush	65	H-93001636	Cyclone Filter
16	H-93001715	Furniture Nozzle	66	H-93001730	Self-Tapping Screw
17	H-93001710	Hose Ass'y	67	H-93001833	5/16" Wide Seal Filter
18	H-93001657	Lower Hose Holder	67	H-93001637	1/8" Wide Seal Filter
19	H-93001658	Debris Door	68	H-93001638	Shroud
20	H-93001690	Adaptor	69	H-93001729	Self-Tapping Screw
21	H-93001711	Upper Hose Holder	70	H-93001639	Dirt Cup
22	H-93001728	Self-Tapping Screw	71	H-93001641	Dirt Cup Bottom Cover Release Spring
23	H-93001696	Carry Handle	72	H-93001640	Dirt Cup Bottom Release Button
24	H-93001708	Handle Release Button	73	H-93001642	Dirt Cup Lid Seal
25	H-93001709	Handle Release Spring	74	H-93001643	Dust Chamber
26	H-93001695	Handle Cover	75	H-93001644	Dust Chamber Seal
27	H-93001694	Cord Hook	76	H-93001645	Dirt Cup Lid & Seal Ass'y
28	H-93001718	Power Cord	77	H-93001646	Dirt Cup Lid
29	H-93001693	Power Cord Fixing Plate	78	H-93001662	Hood Retainer Left
30	H-93001692	Turbine Tool Holder	79	H-93001667	Height Adjustment Knob
31	H-93001691	Combination Brush Holder	80	H-93001668	Hood Retainer Right
32	H-93001721	Pre-Motor Filter Frame Ass'y W/Seal	81	H-93001669	Hood
32	H-93001722	Pre-Motor Filter Frame	82	H-93001654	Lower Hose
33	H-93001724	Pre-Motor Filter Frame Seal	83	H-93001665	Main Body Rear Cover
34	H-93001633	Pre-Motor & Exhaust Filter Kit	84	H-93001655	Inlet Duct
35	H-93001731	Pre-Motor Filter Frame	85	H-93001729	Self-Tapping Screw
36	H-93001720	Dirt Cup Inlet Seal	86	H-93001673	Rear Wheel Hub
37	H-93001719	Wire Cover	87	H-93001672	Rear Wheel
38	H-93001680	Dirt Cup Housing	88	H-93001663	Trunnion
39	H-93001689	Duct Cover	89	H-93001729	Self-Tapping Screw
40	H-93001688	Rear Duct	90	H-93001664	Handle Release Pedal
41	H-93001630	Crevice Tool	91	H-93001666	Main Body
42	H-93001683	Upper Holder - Tool	92	H-93001670	Furniture Guard
43	H-38634091	Extension Tube - 14"	93	H-48414017	Agitator - 15"
44	H-93001681	Lower Holder - Tube	94	H-38528040	Belt
45	H-93001725	Final Filter Frame	95	H-93001671	Height Adjustment Cam
47	H-93001727	Final Filter Frame Fixing Cover	96	H-93001674	Front Wheel Carriage
48	H-93001679	Motor Seal	97	H-93001675	Front Wheel
49	H-93001678	Motor	98	H-93001676	Front Wheel Shaft
50	H-93001677	Rear Plate			