

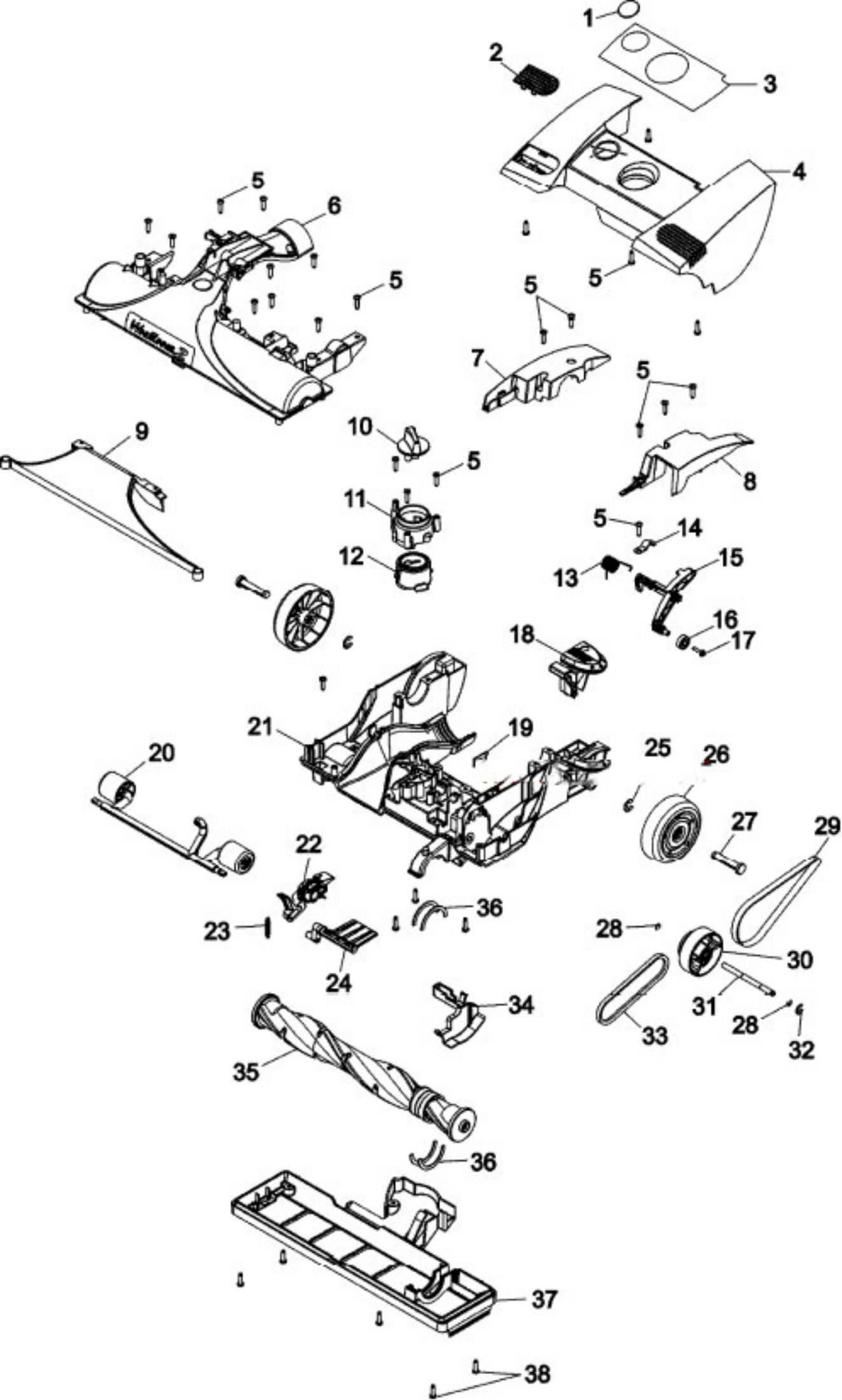
Model Number: U8341900

BOM/Serial #: U8341900

Graphic Title: UPPER HOUSING ASSEMBLY

| Image | Key | Part Number | Description | Substitution | Qty. |
|-------|-----|-------------|----------------------|--------------|------|
| 1 | 1 | H-91001167 | UPPER HNDLWAND ASY | | 1 |
| 1 | 2 | H-92001194 | CREVICE TOOL-AG | | 1 |
| 1 | 3 | H-92001195 | DUSTING BRUSH ASY-AG | | 1 |
| 1 | 4 | H-92001196 | FURNITURE NOZZLE-AG | | 1 |
| 1 | 5 | H-91001160 | HOSE ASSY. | | 1 |
| 1 | 6 | H-91001117 | HOSE CLIP | | 1 |
| 1 | 7 | H-91001153 | CORD WRAP | | 1 |
| 1 | 8 | H-46383331 | CORD-35' | | 1 |
| 1 | 9 | H-36215028 | CORD PROTECTOR-WTBGL | | 1 |
| 1 | 10 | H-92001290 | WAND RETAINER-AG | | 1 |
| 1 | 11 | H-21447242 | SCREW-SELF TAPPING | | 2 |
| 1 | 12 | H-91001121 | REL LTCH/WAND RET-MV | | 1 |
| 1 | 13 | H-91001139 | WAND REL LATCH-AHB | | 1 |
| 1 | 14 | H-91001154 | HANDLE - UPPER - MV | | 1 |
| 1 | 15 | H-21447242 | SCREW-SELF TAPPING | | 2 |
| 1 | 16 | H-92001291 | UPPER HOUSING-MV | | 1 |
| 1 | 17 | H-91001177 | LOWER HOSE | | 1 |
| 1 | 18 | H-91001168 | TURBINE HAND TOOL | | 1 |
| 1 | 19 | H-91001113 | WIRE COVER | | 1 |
| 1 | 20 | H-91001123 | INSULATOR | | 1 |
| 1 | 21 | H-91001164 | POWER PCB BOARD | | 1 |
| 1 | 22 | H-21447242 | SCREW-SELF TAPPING | | 3 |
| 1 | 23 | H-91001150 | LENS, DIRT | | 1 |
| 1 | 24 | H-21447228 | SCREW-SELF-TAPPING | | 2 |
| 1 | 25 | H-38769032 | FINAL FILTER | | 1 |
| 1 | 26 | H-21447242 | SCREW-SELF TAPPING | | 4 |
| 1 | 27 | H-91001125 | MOTOR COVER - MV | | 1 |
| 1 | 28 | H-91001178 | LEAD WIRE TIE | | 1 |
| 1 | 29 | H-91001152 | FOAM MUFFLER | | 1 |
| 1 | 30 | H-27313107 | BULB | | 1 |
| 1 | 31 | H-36322030 | MOTOR MOUNT-SMALL | | 1 |
| 1 | 32 | H-91001108 | MOTOR ASSY. | | 1 |
| 1 | 33 | H-91001148 | MOTOR SEAL - AG | | 1 |
| 1 | 34 | H-91001141 | DIRT DUCT COVER | | 1 |
| 1 | 35 | H-21447242 | SCREW-SELF TAPPING | | 9 |

| Image | Key | Part Number | Description | Substitution | Qty. |
|-------|-----|-------------|----------------|--------------|------|
| 1 | 36 | H-91001162 | WIRE HARNESS | | 1 |
| 1 | 37 | H-56511C48 | MANUAL, OWNERS | | 1 |



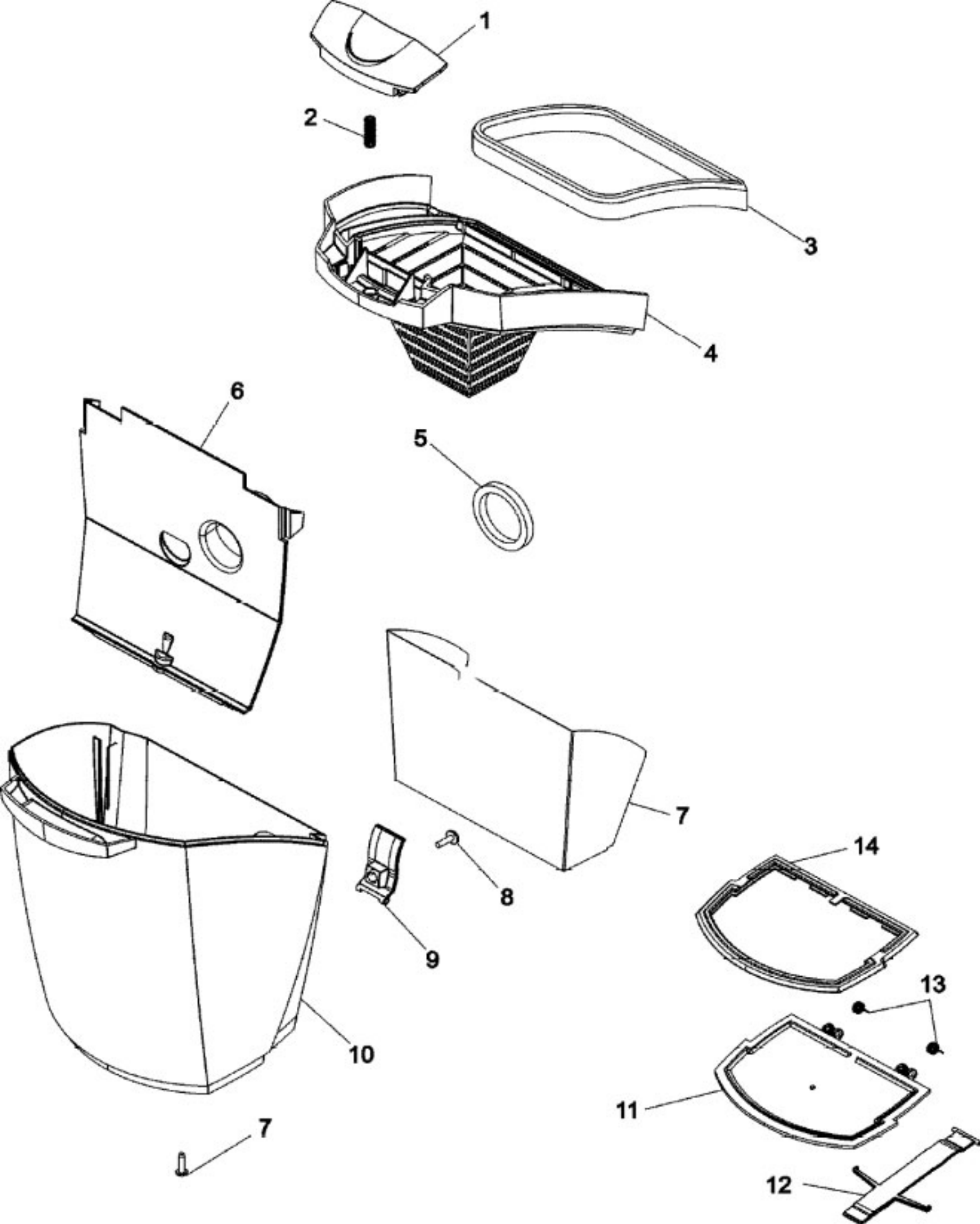
Model Number: U8341900

BOM/Serial #: U8341900

Graphic Title: FOOT ASSEMBLY

| Image | Key | Part Number | Description | Substitution | Qty. |
|-------|-----|-------------|----------------------------|--------------|------|
| 1 | 1 | H-51661020 | MEDALLION | | 1 |
| 1 | 2 | H-91001127 | NON-EDF COVER | | 1 |
| 1 | 3 | H-91001169 | HOOD NAMEPLATE | | 1 |
| 1 | 4 | H-91001131 | HOOD - STD | | 1 |
| 1 | 5 | H-21447242 | SCREW-SELF TAPPING | | 26 |
| 1 | 6 | H-92001286 | AGITATOR HSG-CP(SPLIT) | | 1 |
| 1 | 7 | H-91001111 | TRUNNION COVER-R-MV(SPLIT) | | 1 |
| 1 | 8 | H-91001112 | TRUNNION COVER-L-MV(SPLIT) | | 1 |
| 1 | 9 | H-91001126 | NOZZLE LINER-AKK | | 1 |
| 1 | 10 | H-91001134 | HEIGHT ADJ KNOB-AHB | | 1 |
| 1 | 11 | H-91001138 | HEIGHT ADJ CAM-AG | | 1 |
| 1 | 12 | H-91001122 | CAM HOLDER - AG | | 1 |
| 1 | 13 | H-38356014 | TORSION SPRING | | 1 |
| 1 | 14 | H-91001116 | ACTUATOR ARM TRUN | | 1 |
| 1 | 15 | H-91001136 | IDLER PULLEY ARM-AG | | 1 |
| 1 | 16 | H-91001105 | BEARING | | 1 |
| 1 | 17 | H-91001103 | SCREW-TAPPING | | 1 |
| 1 | 18 | H-38434026 | HANDLE RELEASE LEVER-AG | | 1 |
| 1 | 19 | H-91001165 | PCB HALL ASSY. | | 1 |
| 1 | 20 | H-91001159 | FRONT AXLE ASSY. | | 1 |
| 1 | 21 | H-91001156 | MAIN BODY ASSY. | | 1 |
| 1 | 22 | H-42246150 | VALVE ARM | | 1 |
| 1 | 23 | H-38331006 | SPRING-TURBINE ACT | | 1 |
| 1 | 24 | H-91001142 | VALVE DOOR - AG | | 1 |
| 1 | 25 | H-160017-- | LOCK RING | | 2 |
| 1 | 26 | H-92001287 | REAR WHEEL W/TREAD | | 2 |
| 1 | 27 | H-32434007 | REAR AXLE | | 2 |
| 1 | 28 | H-91001106 | RETAINING RING | | 2 |
| 1 | 29 | H-91001137 | POLY V-BELT | | 1 |
| 1 | 30 | H-91001158 | TRANSFER PULLEY | | 1 |
| 1 | 31 | H-91001110 | TRANSFER PULLEY SHAFT | | 1 |
| 1 | 32 | H-91001107 | RETAINING RING | | 1 |
| 1 | 33 | H-38528034 | V-BELT | | 1 |
| 1 | 34 | H-91001128 | BELT COVER - AG | | 1 |
| 1 | 35 | H-91001166 | AGITATOR ASSY. | | 1 |
| 1 | 36 | H-38781053 | AGITATOR PULLEY SEAL | | 1 |

| Image | Key | Part Number | Description | Substitution | Qty. |
|-------|-----|-------------|-------------|--------------|------|
| 1 | 38 | 017001FW | SCREW | | 5 |

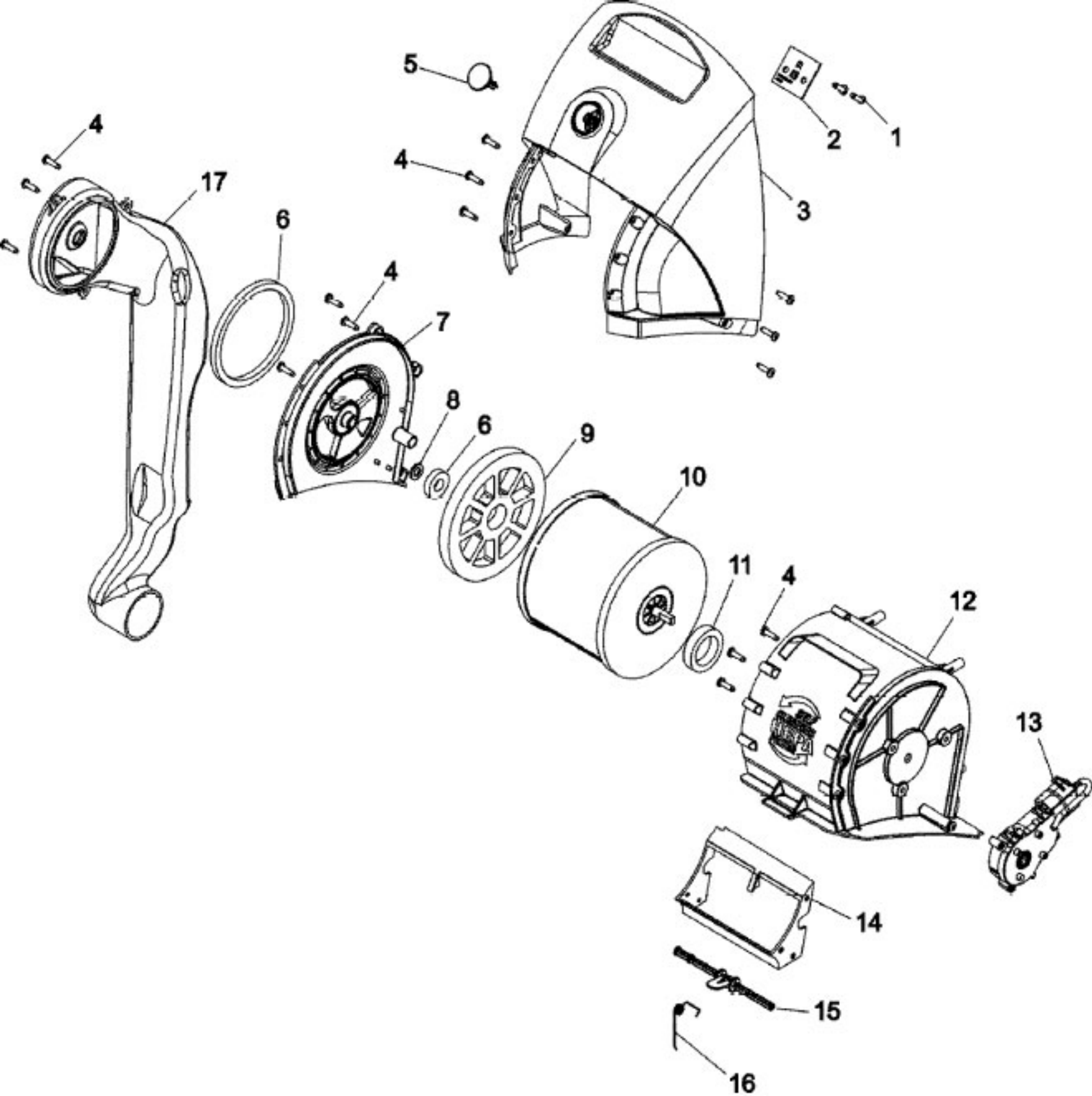


Model Number: U8341900

BOM/Serial #: U8341900

Graphic Title: DIRT CUP ASSEMBLY

| Image | Key | Part Number | Description | Substitution | Qty. |
|-------|-----|-------------|---------------------|--------------|------|
| 1 | 1 | H-91001115 | DIRT CUP LATCH | | 1 |
| 1 | 2 | H-90001037 | SPRING | | 1 |
| 1 | 3 | H-92001288 | GASKET LID-DIRT CUP | | 1 |
| 1 | 4 | H-91001129 | DIRT CUP LID-AKK | | 1 |
| 1 | 5 | H-91001147 | GASKETS | | 1 |
| 1 | 6 | H-91001144 | DIRT CUP PARTITION | | 1 |
| 1 | 7 | H-92001289 | INSERT-DIRT CUP | | 1 |
| 1 | 8 | H-21447242 | SCREW-SELF TAPPING | | 2 |
| 1 | 9 | H-91001135 | DIRT CUP DR ACT-AHB | | 1 |
| 1 | 10 | H-91001145 | DIRT CUP - BZ | | 1 |
| 1 | 11 | H-91001130 | DIRT CUP DOOR - M | | 1 |
| 1 | 12 | H-91001114 | DIRT CP DR LATCH-AG | | 1 |
| 1 | 13 | H-91001176 | TORSION SPRING | | 2 |
| 1 | 14 | H-91001149 | DIRT CP DR GASKET | | 1 |



Model Number: U8341900

BOM/Serial #: U8341900

Graphic Title: FILTER ASSEMBLY

| Image | Key | Part Number | Description | Substitution | Qty. |
|-------|-----|-------------|------------------------|--------------|------|
| 1 | 1 | H-21447242 | SCREW-SELF TAPPING | | 2 |
| 1 | 2 | H-91001163 | ON/OFF SWITCH | | 1 |
| 1 | 3 | H-91001132 | CARRY HANDLE CO | | 1 |
| 1 | 4 | 017001FW | SCREW | | 15 |
| 1 | 5 | H-90001353 | POWER BUTTON | | 1 |
| 1 | 6 | H-91001147 | GASKETS | | 1 |
| 1 | 7 | H-91001119 | FILTER HSG COVER-AKK | | 1 |
| 1 | 8 | H-91001171 | THRUST WASHER | | 1 |
| 1 | 9 | H-91001172 | FILTER GASKET | | 1 |
| 1 | 10 | H-91001161 | FILTER ASSY. | | 1 |
| 1 | 11 | H-91001173 | FILTER SPRING GASKET | | 1 |
| 1 | 12 | H-91001174 | FILTER HSG COVER-AKK | | 1 |
| 1 | 13 | H-91001109 | PRIMARY FILTER TRANS | | 1 |
| 1 | 14 | H-91001143 | FILTER PARTITION | | 1 |
| 1 | 15 | H-91001155 | FILTER FLICKER | | 1 |
| 1 | 16 | H-91001175 | TORSION SPRING-FLICKER | | 1 |
| 1 | 17 | H-91001140 | CLEAN AIR DUCT | | 1 |