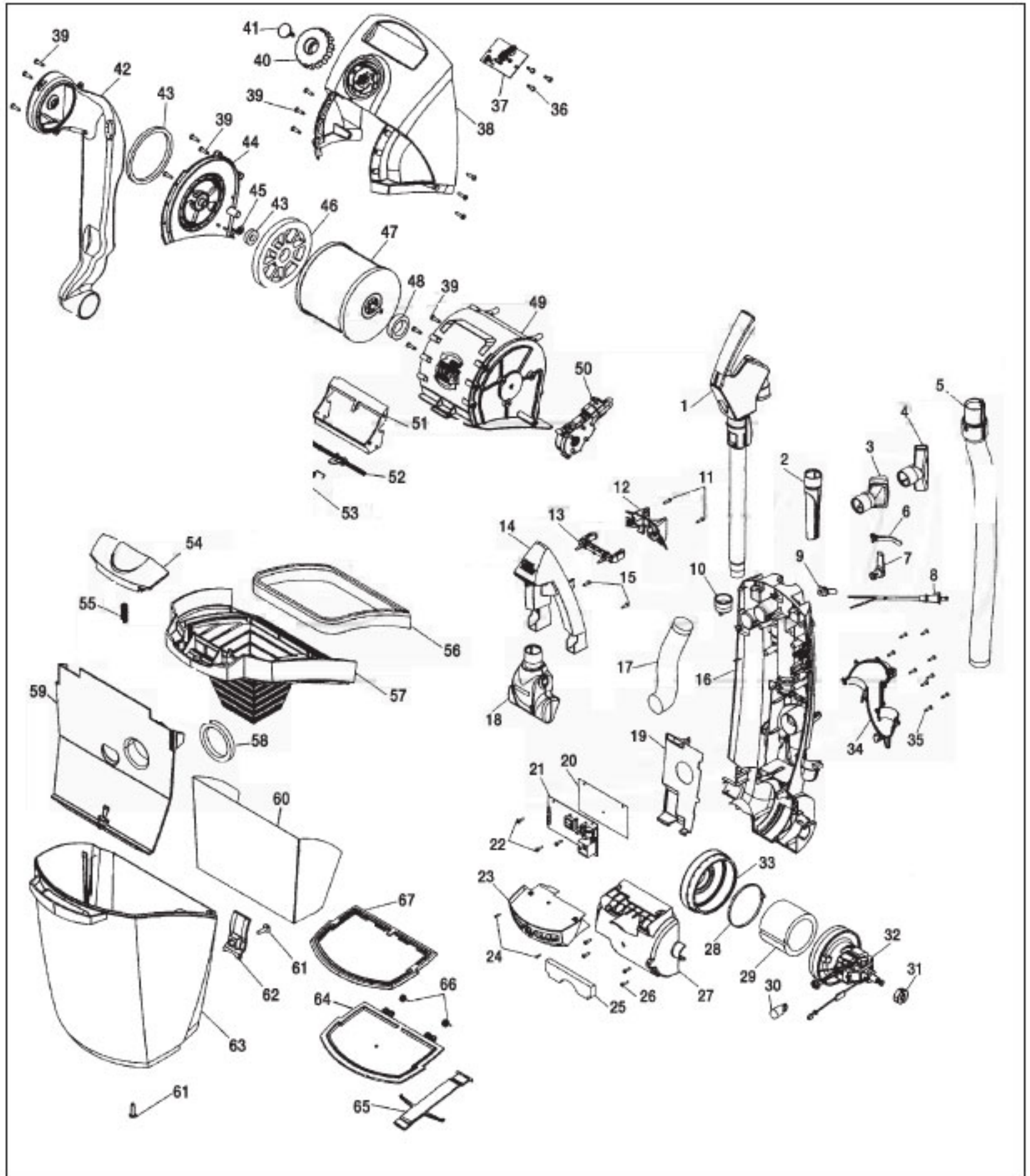


HOOVER Original

WINDTUNNEL 2 – Bagless Models

Model U8371-900 Shown



Original **HOOVER**

WINDTUNNEL 2 – Bagless Models

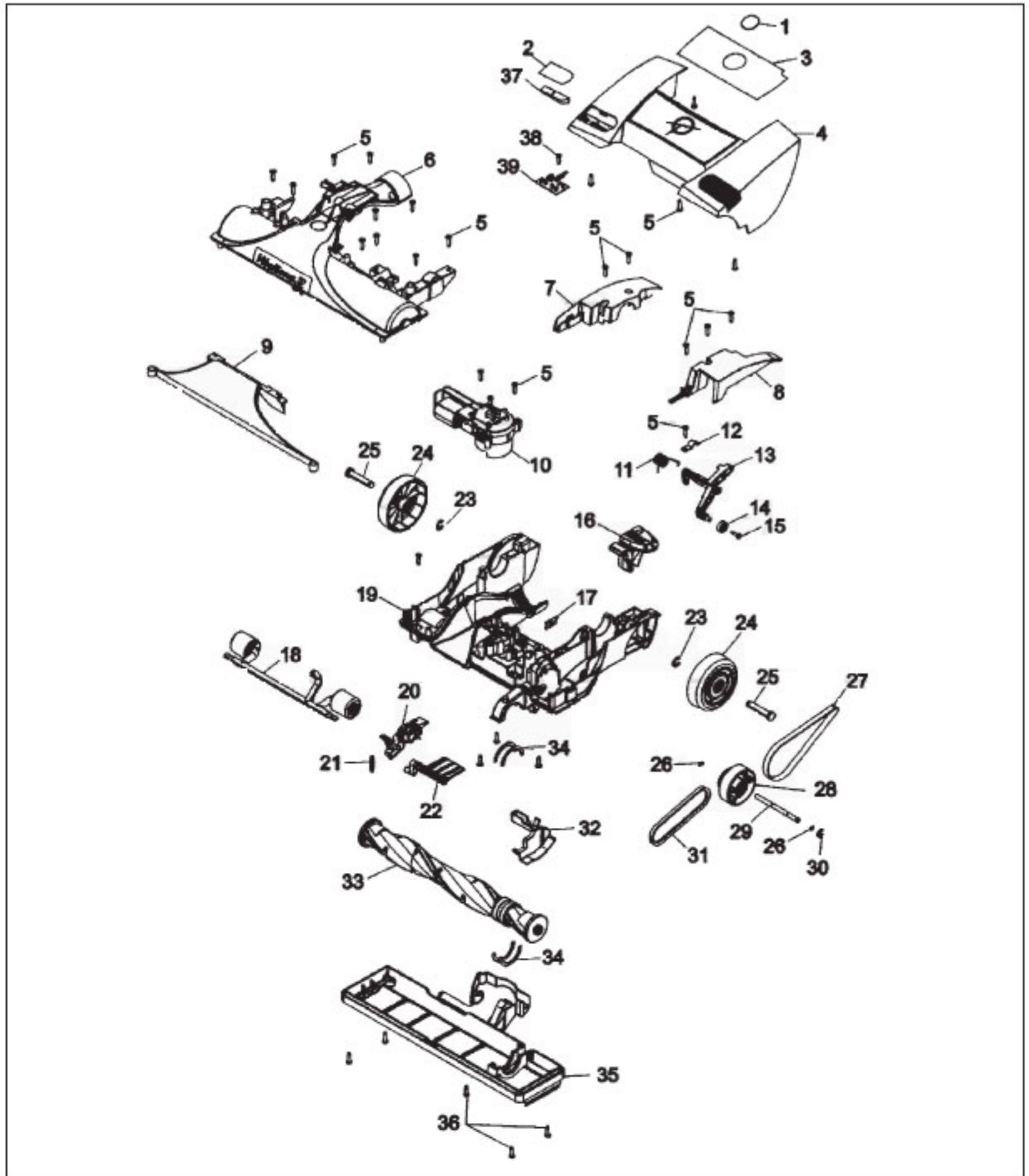
Model U8371-900 Shown

| KEY | PART NO. | DESCRIPTION | KEY | PART NO. | DESCRIPTION |
|-----|------------|------------------------|-----|------------|------------------------------|
| 1 | H-48642100 | Upper Handle/Wand | 36 | H-21447242 | Screw |
| 2 | H-92001194 | Crevice Tool | 37 | H-91001189 | Height Adjustment PCB |
| 3 | H-92001195 | Dusting Brush | 38 | H-92001295 | Carry Handle Cover |
| 4 | H-92001196 | Furniture Nozzle | 39 | H-017001 | Screw |
| 5 | H-92001160 | Hose Ass'y | 40 | H-92001293 | Height Adjustment Knob |
| | H-91001160 | Extra Hose (Not Shown) | 41 | H-90001353 | Power Button |
| 6 | H-91001117 | Hose Clip | 42 | H-91001140 | Clean Air Duct |
| 7 | H-91001153 | Cord Wrap | 43 | H-91001147 | Filter Gaskets |
| 8 | H-46923331 | Cord | 44 | H-12002821 | Filter (Incl. Item 47) |
| 9 | H-36215028 | Cord Protector | 45 | H-91001171 | Thrust Washer |
| 10 | H-92001290 | Wand Retainer | 46 | H-38784115 | Filter Gasket |
| 11 | H-21447242 | Screw | 47 | H-12002821 | Filter (Incl. Item 44) |
| 12 | H-91001121 | Outer Latch | 48 | H-91001173 | Filter Spring Gasket |
| 13 | H-91001139 | Inner Latch | 49 | H-36426083 | Filter Housing |
| 14 | H-91001154 | Handle | 50 | H-91001109 | Primary Filter Transmission |
| 15 | H-21447242 | Screw | 51 | H-91001143 | Filter Partition |
| 16 | H-92001291 | Upper Housing | 52 | H-91001155 | Filter Flicker |
| 17 | H-91001177 | Lower Hose | 53 | H-91001175 | Torsion Spring Flicker |
| 18 | H-49129039 | Turbo Hand Tool | 54 | H-91001115 | Dirt Cup Latch |
| 19 | H-91001113 | Wire Cover | 55 | H-90001037 | Spring |
| 20 | H-91001123 | Insulator | 56 | H-92001288 | Gasket |
| 21 | H-46851068 | PCB Ass'y | 57 | H-37249077 | Dirt Cup Lid |
| 22 | H-21447242 | Screw | 58 | H-91001147 | Gasket |
| 23 | H-91001150 | Lens | 59 | H-91001144 | Dirt Cup Partition |
| 24 | H-21447228 | Screw | 60 | H-57127269 | Dirt Cup Insert |
| 25 | H-38769032 | Final Filter | 61 | H-21447242 | Screw |
| 26 | H-21447242 | Screw | 62 | H-91001135 | Dirt Cup Latch |
| 27 | H-91001125 | Motor Cover | 63 | H-38775136 | Dirt Cup |
| 28 | H-91001178 | Lead Wire Tie | 64 | H-91001130 | Dirt Cup Door |
| 29 | H-91001152 | Foam Muffler | 65 | H-91001114 | Dirt Cup Door Latch |
| 30 | H-27313107 | Bulb | 66 | H-91001176 | Torsion Spring |
| 31 | H-36322030 | Motor Mount | 67 | H-91001149 | Dirt Cup Door Gasket |
| 32 | H-91001108 | Motor | | H-46658014 | Wire Harness (Not Shown) |
| 33 | H-91001148 | Motor Seal | | H-56511C48 | Owners Manual (Not Shown) |
| 34 | H-91001141 | Dirt Duct Cover | | H-59156137 | Bare Floor Brush (Not Shown) |
| 35 | H-21447242 | Screw | | | |

HOOVER Original

WINDTUNNEL 2 – Bagless Models

Model U8371-900 Shown



Original **HOOVER**

WINDTUNNEL 2 – Bagless Models

Model U8371-900 Shown

| KEY | PART NO. | DESCRIPTION |
|-----|------------|--------------------------------|
| 1 | H-51661020 | Medallion |
| 2 | H-51464005 | EDF Label |
| 3 | H-91001187 | Hood Nameplate |
| 4 | H-92001292 | Hood |
| 5 | H-21447242 | Screw |
| 6 | H-92001286 | Agitator Housing |
| 7 | H-91001111 | Trunnion Cover Right |
| 8 | H-91001112 | Trunnion Cover Left |
| 9 | H-92001294 | Nozzle Liner |
| 10 | H-91001188 | Height Adjustment Transmission |
| 11 | H-38356014 | Torsion Spring |
| 12 | H-91001116 | Actuator Arm |
| 13 | H-91001136 | Idler Pulley Arm |
| 14 | H-91001105 | Bearing |
| 15 | H-91001103 | Screw |
| 16 | H-38434026 | Handle Release Lever |
| 17 | H-91001165 | PCB |
| 18 | H-91001159 | Front Wheel Ass'y |
| 19 | H-91001156 | Main Body |
| 20 | H-42246150 | Valve Arm |
| 21 | H-38331006 | Spring |

| KEY | PART NO. | DESCRIPTION |
|-----|------------|-----------------------|
| 22 | H-91001142 | Valve Door |
| 23 | H-160017 | Lock Ring |
| 24 | H-92001287 | Rear Wheel |
| 25 | H-32434007 | Rear Axle |
| 26 | H-91001106 | Retaining Ring |
| 27 | H-91001137 | Poly V Belt |
| 28 | H-91001158 | Transfer Pulley |
| 29 | H-91001110 | Transfer Pulley Shaft |
| 30 | H-91001107 | Retaining Ring |
| 31 | H-38528034 | V Belt |
| 32 | H-91001128 | Belt Cover |
| 33 | H-48414169 | Brushroll |
| 34 | H-38781053 | Agitator Pulley Seal |
| 35 | H-91001157 | Bottom Plate |
| 36 | H-17001FW | Screw |
| 37 | H-39383137 | EDF Lens |
| 38 | H-17001FW | Screw |
| 39 | H-46851060 | EDF Circuit Board |