

This Owner's Manual is provided and hosted by [Appliance Factory Parts](#).



# HOOVER UH20020 Owner's Manual

[Shop genuine replacement parts for HOOVER UH20020](#)



[Find Your HOOVER Vacuum Cleaner Parts - Select From 1455 Models](#)

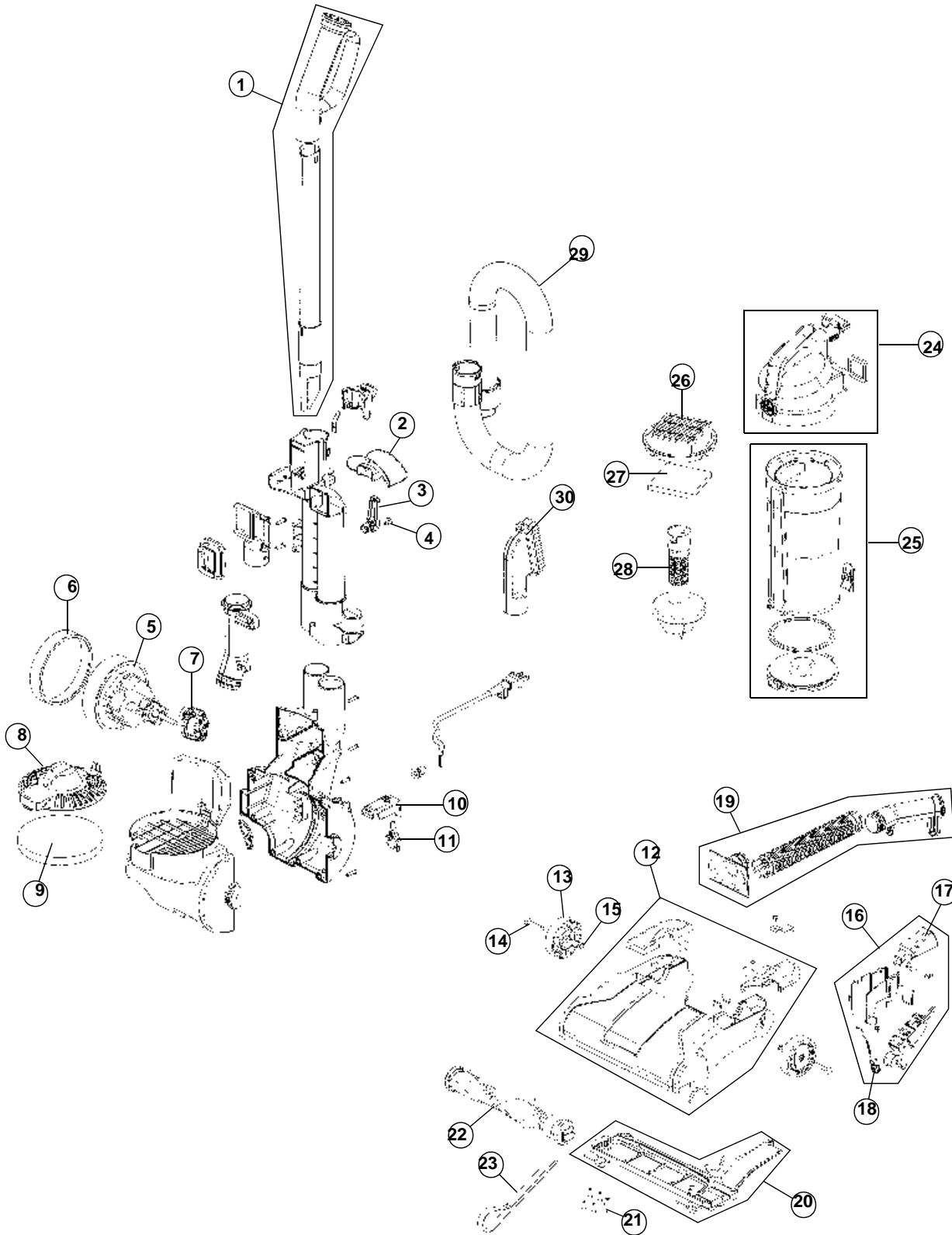
----- Manual continues below -----



# ASSEMBLY SCHEMATIC

MODEL NO.

UH20020





## PART LISTING

UH20020

ITEM	PART NUMBER	MODELS TO FIT	PART DESCRIPTION
1	304171001	UH20020	HANDLE ASSEMBLY WITH CREVICE TOOL
2	522388001	UH20020	UPPER HOSE HOLDER
3	519422002	UH20020	CORD HOOK
4	660128007	UH20020	SCREW - CORD HOOK
5	741489001	UH20020	MOTOR ASSEMBLY
6	562620001	UH20020	GASKET - MOTOR
7	521875001	UH20020	GROMMET - MOTOR
8	522390002	UH20020	EXHAUST FILTER COVER
9	562651001	UH20020	EXHAUST FILTER - FOAM
10	522393001	UH20020	SWITCH PEDAL
11	1860081000	UH20020	SWITCH
12	410076001	UH20020	NOZZLE COVER ASSEMBLY
13	522396001	UH20020	REAR WHEEL
14	621201001	UH20020	SHAFT - REAR WHEEL
15	691040002	UH20020	E-CLIP
16	410083001	UH20020	BRUSH ROLL ON-OFF LEVER ASSEMBLY
17	522400001	UH20020	FOOT PEDAL - BRUSH ROLL ON-OFF
18	692766001	UH20020	SPRING - SUPPORT BEARING
19	304191001	UH20020	LOWER HOSE ASSEMBLY
20	410082001	UH20020	NOZZLE GUARD ASSEMBLY - WITH BRISTLES
21	660021002	UH20020	SCREW - NOZZLE GUARD
22	304170001	UH20020	BRUSH ROLL ASSEMBLY
23	562633001	UH20020	BELT
24	410073001	UH20020	DIRT CUP LID ASSEMBLY
25	410074001	UH20020	DIRT CUP ASSEMBLY
26	304219001	UH20020	PRIMARY FILTER
27	562655001	UH20020	PRIMARY FOAM FILTER
28	522379001	UH20020	BAFFLE TUBE
29	304193001	UH20020	UPPER HOSE ASSEMBLY
30	304257001	UH20020	DUSTING BRUSH ASSEMBLY