

This Owner's Manual is provided and hosted by [Appliance Factory Parts](#).



# HOOVER UH70005B Owner's Manual

[Shop genuine replacement parts for HOOVER  
UH70005B](#)



[Find Your HOOVER Vacuum Cleaner Parts - Select From 1455 Models](#)

----- Manual continues below -----





# FUSION™

## Power Max MACH<sup>3</sup>

### PART LISTING

ITEM	PART NUMBER	MODELS To FIT	PART DESCRIPTION
1	H-93001707	ALL	SWITCH BUTTON
	H-93002352	U5185-900	SWITCH BUTTON - PURPLE
2	H-93001706	ALL	SWITCH BUTTON SPRING
3	H-93001705	ALL	SWITCH
4	H-93001703	ALL	SWITCH HOLDER
5	H-93001699	ALL	HANDLE - LEFT PURPLE
	H-93002350	U5185-900	HANDLE - LEFT GRAPHITE SILVER METTALIC
6	H-93001702	ALL	SWITCH SLEEVE
7	H-93001704	ALL	HANDLE - RIGHT PURPLE
	H-93002351	U5185-900	HANDLE - RIGHT GRAPHITE SILVER METALLIC
8	H-93001698	ALL	TELESCOPING TUBE
9	H-93001717	ALL	FEMALE CONNECTOR
10	H-93001700	ALL	MALE CONNECTOR
11	H-93001701	ALL	FIXING PLATE - MALE CONNECTOR
12	H-93001697	ALL	HANDLE SLEEVE
13	H-93001712	ALL	UPPER HOUSING
14	H-49129032	ALL	TURBINE HAND TOOL
15	H-93001716	ALL	BRUSH - REMOVABLE
16	H-93001715	ALL	FURNITURE NOZZLE
17	H-93001710	ALL	HOSE ASSEMBLY
18	H-93001657	ALL	LOWER HOSE HOLDER
	H-93002331	U5185-900	LOWER HOSE HOLDER - MAG GRAY
19	H-93001658	ALL	DEBRIS DOOR
20	H-93001690	ALL	ADAPTOR
21	H-93001711	ALL	UPPER HOSE HOLDER
	H-93002354	U5185-900	UPPER HOSE HOLDER - MAG GRAY
22	H-93001728	ALL	SCREW - SELF TAPPING
23	H-93001696	U5180-900, U5180-910	CARRY HANDLE - RED
	H-93002321	U5182-900, U5183-900	CARRY HANDLE - MYSTIC LIME GREEN
	H-93002349	U5185-900	CARRY HANDLE - PURPLE
24	H-93001708	U5180-900, U5180-910	HANDLE RELEASE BUTTON - RED
	H-93002322	U5182-900, U5183-900	HANDLE RELEASE BUTTON - LIME GREEN
	H-93002353	U5185-900	HANDLE RELEASE BUTTON - PURPLE
25	H-93001709	ALL	HANDLE RELEASE BUTTON SPRING
26	H-93001695	ALL	HANDLE COVER
	H-93002348	U5185-900	HANDLE COVER - GRAPHITE SILVER
27	H-93001694	ALL	CORD HOOK
	H-93002347	U5185-900	CORD HOOK - GRAPHITE GRAY
28	H-93001718	ALL	POWER CORD

U5180-900  
 U5180-910  
 U5182-900  
 U5183-900  
 U5185-900  
 UH70005B



# FUSION™

## Power Max MACH<sup>3</sup>

### PART LISTING / PRICE LIST

ITEM	PART NUMBER	MODELS TO FIT	PART DESCRIPTION
29	H-93001693	ALL	FIXING PLATE - POWER CORD
30	H-93001692	ALL	TURBINE TOOL HOLDER
	H-93002346	U5185-900	TURBINE TOOL HOLDER - MAG GRAY
31	H-93001691	ALL	COMBINATION BRUSH HOLDER
	H-93002345	U5185-900	COMBINATION BRUSH HOLDER - GRAY
32	H-93001722	ALL	PRE-MOTOR FILTER FRAME
	H-93001721	ALL	PRE-MOTOR FILTER FRAME WITH SEAL
33	H-93001724	ALL	SEAL - PRE MOTOR FILTER FRAME
34	H-40110010	ALL	FILTER PACK - 2 PACK
35	H-93001731	ALL	FILTER FRAME BOTTOM - PRE FILTER
36	H-93001720	ALL	DIRT CUP INLET SEAL
37	H-93001719	ALL	WIRE COVER
38	H-93001680	ALL	BACK PANEL / DIRT CUP HOUSING
	H-93002341	U5185-900	BACK PANEL / DIRT CUP HOUSING - GRAPHITE SILVER
39	H-93001689	ALL	DUCT COVER
40	H-93001688	ALL	REAR DUCT
41	H-93001630	U5180-900, U5180-910	CREVICE TOOL - RED
	H-93002320	U5182-900, U5183-900	CREVICE TOOL - GREEN <b>ORDER 93001630</b>
	H-93002344	U5185-900	CREVICE TOOL - PURPLE <b>ORDER 93001630</b>
42	H-93001683	ALL	UPPER TUBE HOLDER
	H-93002343	U5185-900	UPPER TUBE HOLDER - GRAPHITE SILVER
43	H-38634092	ALL	EXTENSION TUBE - 14"
44	H-93001681	ALL	LOWER TUBE HOLDER
	H-93002342	U5185-900	LOWER TUBE HOLDER - GRAPHITE SILVER
45	H-93001725	ALL	FINAL FILTER FRAME
46		ALL	FILTER PACK - <b>ORDER 40110010</b>
47	H-93001727	ALL	FIXING COVER - FINAL FILTER FRAME
48	H-93001679	ALL	MOTOR SEAL
49	H-93001678	ALL	MOTOR
50	H-93001677	ALL	REAR MOTOR PLATE
51	H-93001661	ALL	MOTOR COVER
	H-93002332	U5185-900	MOTOR COVER - GRAPHITE SILVER
52	H-27313107	ALL	BULB
53	H-93001660	ALL	LAMP SOCKET
54	H-93001659	ALL	LENS
55	H-93001729	ALL	SCREW - SELF TAPPING
56	H-93002520	ALL	SECONDARY FILTER - PRE MOTOR
	H-59156137	U5182-900, U5183-900, U5185-900	BARE FLOOR BRUSH - 12"

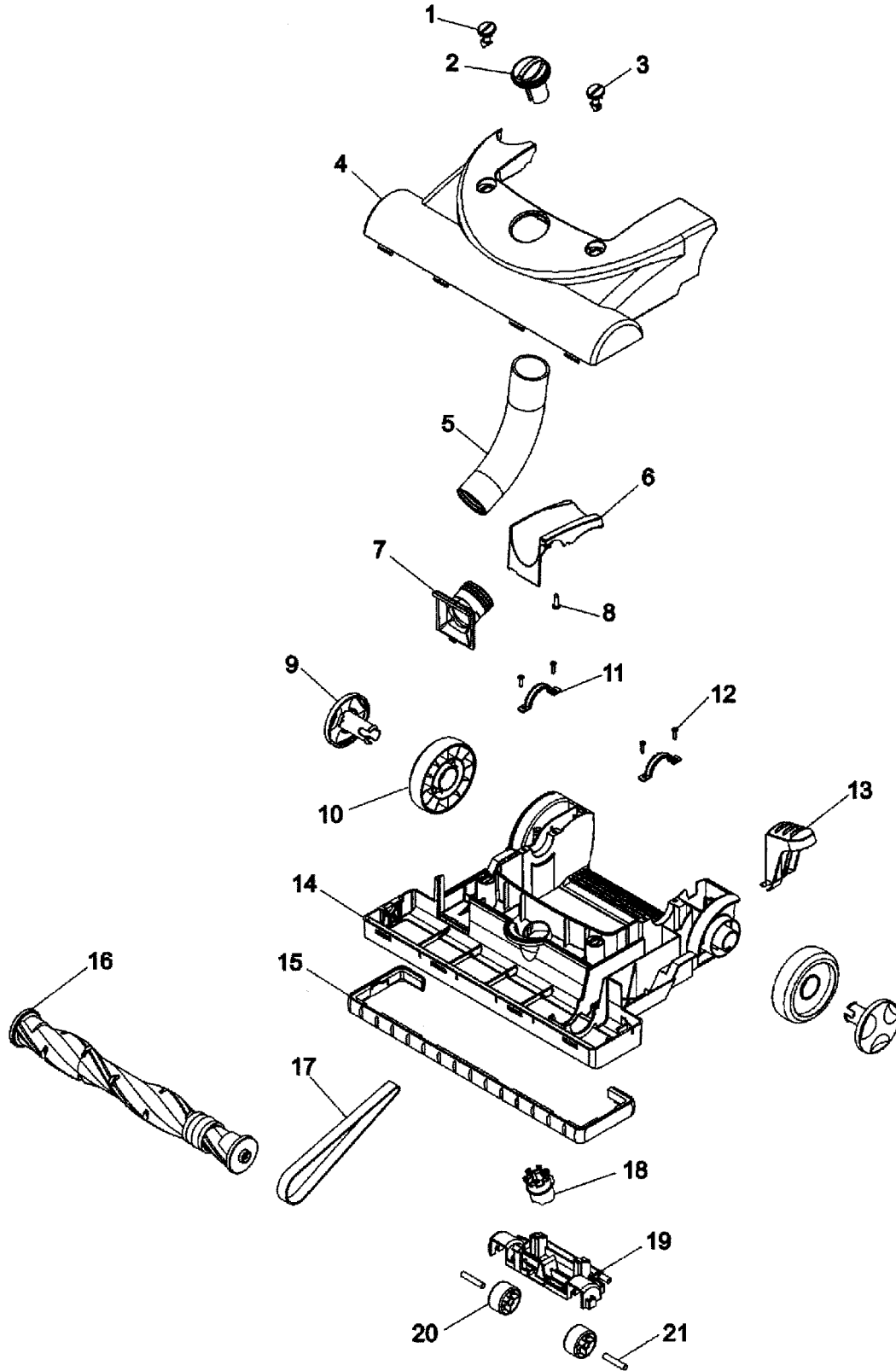
U5180-900  
 U5180-910  
 U5182-900  
 U5183-900  
 U5185-900  
 UH70005B



# FUSION™

## Power Max MACH<sup>3</sup>

### ASSEMBLY SCHEMATIC



U5180-900  
U5180-910  
U5182-900  
U5183-900  
U5185-900  
UH70005B



# FUSION™

## Power Max

# MACH<sup>3</sup>

### PART LISTING

ITEM	PART NUMBER	MODELS TO FIT	PART DESCRIPTION
1	H-93001662	ALL	HOOD RETAINER - LEFT
	H-93002333	U5185-900	HOOD RETAINER - LEFT GRAPHITE GRAY
2	H-93001667	U5180-900, U5180-910	HEIGHT ADJUSTMENT KNOB - RED
	H-93002317	U5182-900, U5183-900	HEIGHT ADJUSTMENT KNOB - LIME GRN
	H-93002336	U5185-900	HEIGHT ADJUSTMENT KNOB - PURPLE
3	H-93001668	ALL	HOOD RETAINER - RIGHT
	H-93002337	U5185-900	HOOD RETAINER - RIGHT GRAPHITE GRAY
4	H-93001669	ALL	HOOD / NOZZLE COVER - PURPLE / RED
	H-93002338	U5185-900	HOOD / NOZZLE COVER - GRAPHITE GRAY / PURPLE
5	H-93001654	ALL	LOWER HOSE
6	H-93001665	ALL	REAR COVER - MAIN BODY
	H-93002335	U5185-900	REAR COVER - MAIN BODY - SILVER
7	H-93001655	ALL	INLET DUCT
8	H-93001729	ALL	SCREW - SELF TAPPING
9	H-93001673	U5180-900, U5180-910	REAR WHEEL HUB - RED
	H-93002319	U5182-900, U5183-900	REAR WHEEL HUB - MYSTIC LIME GREEN
	H-93002340	U5185-900	REAR WHEEL HUB - PURPLE
10	H-93001672	ALL	REAR WHEEL
11	H-93001663	ALL	TRUNNION
12	H-93001729	ALL	SCREW - SELF TAPPING
13	H-93001664	U5180-900, U5180-910	HANDLE RELEASE PEDAL - RED
	H-93002316	U5182-900, U5183-900	HANDLE RELEASE PEDAL - LIME GREEN
	H-93002334	U5185-900	HANDLE RELEASE PEDAL - PURPLE
14	H-93001666	ALL	MAIN BODY
15	H-93001670	U5180-900, U5180-910	FURNITURE GUARD - RED
	H-93002318	U5182-900, U5183-900	FURNITURE GUARD - MYSTIC LIME GREEN
	H-93002339	U5185-900	FURNITURE GUARD - PURPLE
16	H-48414132	ALL	AGITATOR / BRUSH ROLL 15"
	H-48414115	ALL	AGITATOR / BRUSH ROLL 15"
17	H-38528040	ALL	BELT
18	H-93001671	ALL	HEIGHT ADJUSTMENT CAM
19	H-93001674	ALL	FRONT WHEEL CARRIAGE
20	H-93001675	ALL	FRONT WHEEL
21	H-93001676	ALL	FRONT WHEEL SHAFT

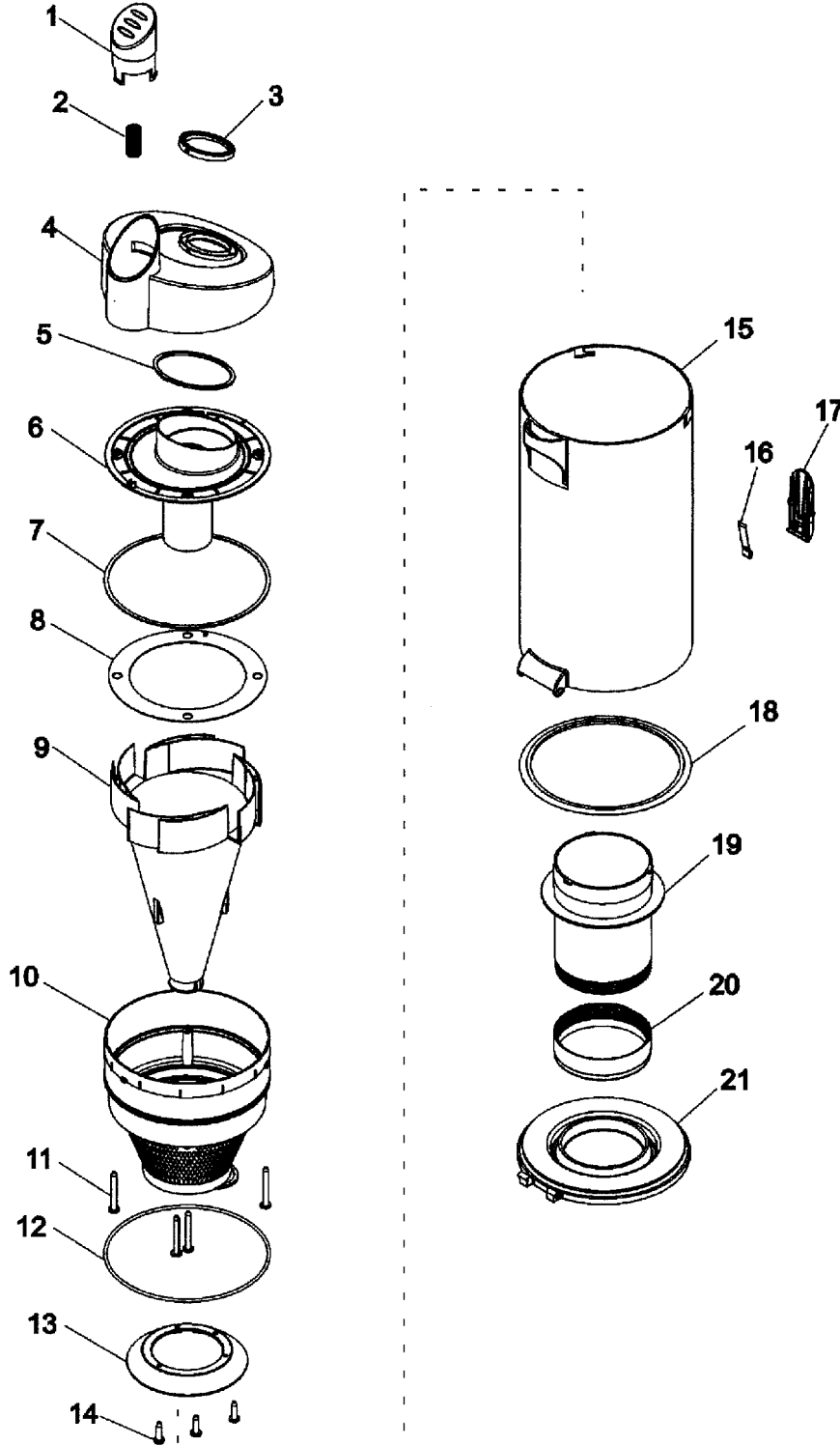
U5180-900  
 U5180-910  
 U5182-900  
 U5183-900  
 U5185-900  
 UH70005B



# FUSION™

## Power Max MACH<sup>3</sup>

### ASSEMBLY SCHEMATIC



U5180-900  
U5180-910  
U5182-900  
U5183-900  
U5185-900  
UH70005B



# FUSION™

## Power Max MACH<sup>3</sup>

### PART LISTING /

ITEM	PART NUMBER	MODELS TO FIT	PART DESCRIPTION
1	H-93001635	U5180-900, U5180-910	DIRT CUP RELEASE BUTTON
	H-93002310	U5182-900, U5183-900	DIRT CUP RELEASE BUTTON
	H-93002324	U5185-900	DIRT CUP RELEASE BUTTON - PURPLE
2	H-93001656	ALL	DIRT CUP RELEASE BUTTON SPRING
3	H-93001647	ALL	DIRT CUP OUTLET SEAL
4	H-93001648	ALL	DIRT CUP COVER
	H-93002330	U5185-900	DIRT CUP COVER
5	H-93001649	ALL	DIRT CUP COVER SEAL
6	H-93001650	ALL	DUCT
7	H-93001651	ALL	SEAL - DUCT B
8	H-93001652	ALL	SEAL - DUCT A
9	H-93001653	U5180-900, U5180-910	CONE SEPARATOR
	H-93002315	U5182-900, U5183-900, U5185-900	CONE SEPARATOR
10	H-93001636	U5180-900, U5180-910	CYCLONE FILTER
	H-93002311	U5182-900, U5183-900	CYCLONE FILTER
	H-93002325	U5185-900	CYCLONE FILTER - PURPLE
11	H-93001730	ALL	SCREW - SELF TAPPING
12	H-93001637	U5180-900, U5180-910	FILTER SEAL - 1/8" - OLDER MODELS
	H-93001832	U5180-900, U5180-910	FILTER SEAL
	H-93001833	U5182-900, U5183-900, U5185-900	FILTER SEAL - 5/16"
13	H-93001638	ALL	SHROUD
	H-93002326	U5185-900	SHROUD - PURPLE
14	H-93001729	ALL	SCREW - SELF TAPPING
15	H-93001639	ALL	DIRT CUP
	H-93002327	U5185-900	DIRT CUP - SMOKE
16	H-93001641	ALL	DIRT CUP RELEASE SPRING
17	H-93001640	U5180-900, U5180-910	DIRT CUP RELEASE BUTTON
	H-93002313	U5182-900, U5183-900	DIRT CUP RELEASE BUTTON
	H-93002328	U5185-900	DIRT CUP RELEASE BUTTON - PURPLE
18	H-93001642	ALL	DIRT CUP LID SEAL
19	H-93001643	U5180-900, U5180-910	DUST CHAMBER / DIRT CUP
	H-93002314	U5182-900, U5183-900	DUST CHAMBER / DIRT CUP
	H-93002329	U5185-900	DUST CHAMBER / DIRT CUP
20	H-93001644	ALL	DUST CHAMBER SEAL
21	H-93001645	ALL	DIRT CUP LID WITH SEAL

U5180-900  
U5180-910  
U5182-900  
U5183-900  
U5185-900  
UH70005B