

This Owner's Manual is provided and hosted by [Appliance Factory Parts](#).



HOOVER UH70130 Owner's Manual

[Shop genuine replacement parts for HOOVER UH70130](#)



[Find Your HOOVER Vacuum Cleaner Parts - Select From 1455 Models](#)

----- Manual continues below -----

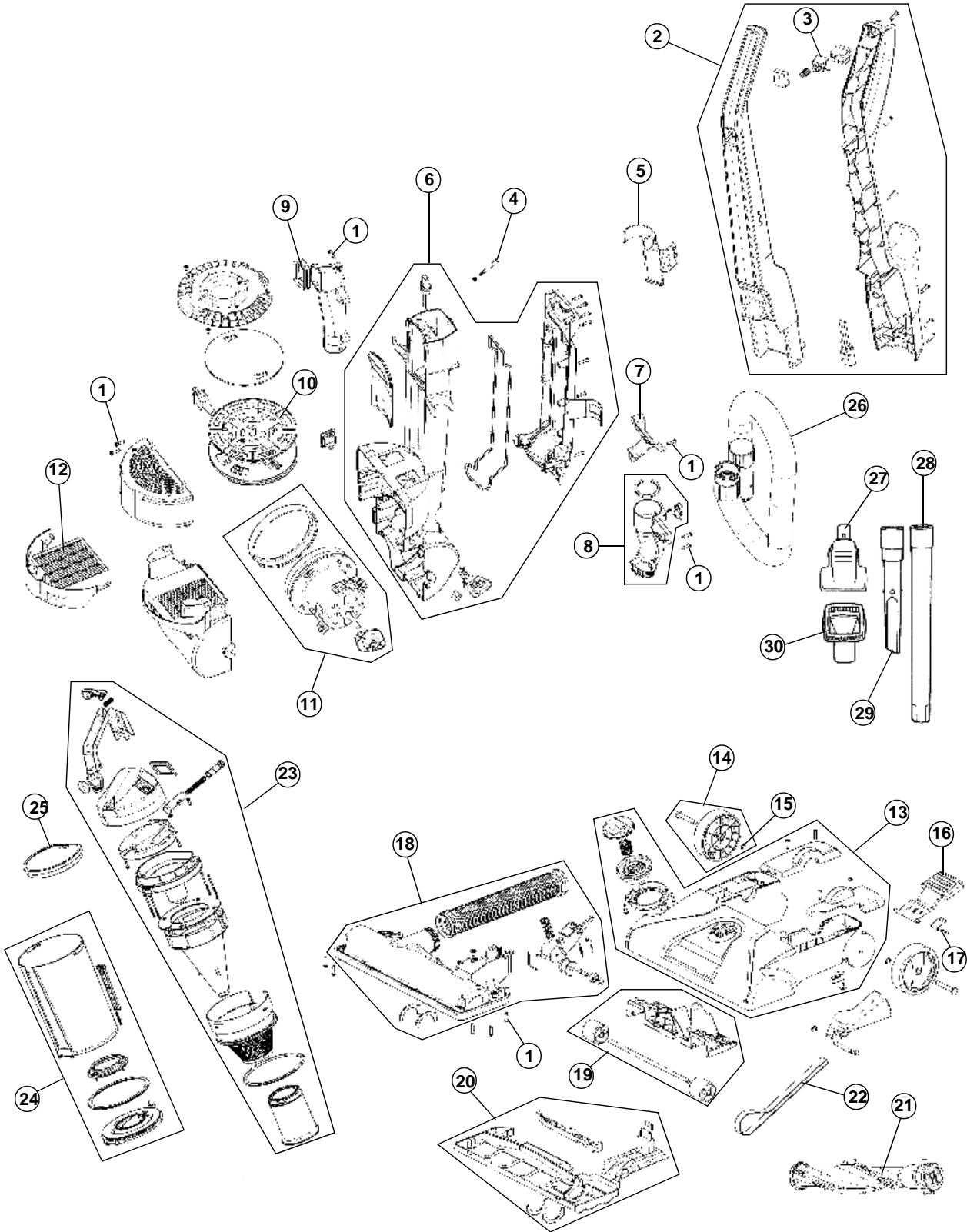


WINDTUNNEL

REWIND T SERIES

ASSEMBLY SCHEMATIC

MODEL NO.
UH70130





PART LISTING

MODEL No.

UH70130

| ITEM | PART NUMBER | MODELS To FIT | PART DESCRIPTION |
|------|-------------|---------------|--|
| 1 | 660021002 | UH70130 | BODY SCREW - #8 x 6MM |
| 2 | 303846001 | UH70130 | HANDLE ASSEMBLY - STRAIGHT / D STYLE - SHADOW GRAY |
| 3 | 28218062 | UH70130 | SWITCH |
| 4 | 620893001 | UH70130 | HANDLE SCREW |
| 5 | 521025001 | UH70130 | TURBO TOOL CLIP |
| 6 | 303831001 | UH70130 | MAIN BACK PANEL ASSEMBLY |
| 7 | 521088001 | UH70130 | HOSE WRAP - LOWER |
| 8 | 303832001 | UH70130 | LOWER HOSE ADAPTOR ASSEMBLY |
| 9 | 562269002 | UH70130 | INLET TUBE SEAL |
| 10 | 303238002 | UH70130 | CORD REWIND ASSEMBLY |
| 11 | 230272001 | UH70130 | MOTOR ASSEMBLY - WITH GASKET / GROMMET |
| 12 | 303172002 | UH70130 | EXHAUST HEPA FILTER ASSEMBLY |
| 13 | WAITING | UH70130 | NOZZLE BASE ASSEMBLY - WARM TITANIUM METALLIC |
| 14 | WAITING | UH70130 | REAR WHEEL ASSEMBLY |
| 15 | 691040002 | UH70130 | E - CLIP |
| 16 | 521048001 | UH70130 | HANDLE RELEASE PEDAL |
| 17 | 633197001 | UH70130 | HANDLE RELEASE PEDAL SPRING |
| 18 | 303828001 | UH70130 | BRUSH ROLL HOUSING / LOWER HOSE ASMY |
| 19 | 303214001 | UH70130 | ROLLER LIFTER ASSEMBLY |
| 20 | 303829001 | UH70130 | NOZZLE GUARD ASSEMBLY |
| 21 | 303280001 | UH70130 | BRUSH ROLL ASSEMBLY |
| 22 | 562289001 | UH70130 | BELT - CLOTH |
| | AH20065 | UH70130 | BELT - CLOTH 2 PACK |
| 23 | 303833009 | UH70130 | DIRT CUP LID ASSEMBLY - WARM TITANIUM METALLIC |
| 24 | 304025001 | UH70130 | DIRT CUP ASSEMBLY - SHORT |
| 25 | 303173001 | UH70130 | PRIMARY FILTER |
| 26 | 303203001 | UH70130 | UPPER HOSE ASSEMBLY - 8' |
| 27 | 521025000 | UH70130 | TURBO TOOL ASSEMBLY |
| 28 | 500170001 | UH70130 | EXTENSION WAND |
| 29 | 521071001 | UH70130 | CREVICE TOOL |
| 30 | 303205001 | UH70130 | UPHOLSTERY TOOL |