

This Owner's Manual is provided and hosted by [Appliance Factory Parts](#).



# Wolf D030UP Owner's Manual

[Shop genuine replacement parts for Wolf D030UP](#)



[Find Your Wolf Electric Range Parts - Select From 82 Models](#)

----- Manual continues below -----

## 30" Oven Control Panel Parts List Single and Double Oven

| <u>Ref #</u> | <u>Part #</u> | <u>Description</u>                                     |
|--------------|---------------|--|
| 1            | 805081        | Control Head, 30, Sngl, Sst                            |
|              | 805104        | Control Head, 30, Dbl, Sst                             |
|              | 805106        | Control Head, 30, Sngl, Plt                            |
|              | 805107        | Control Head, 30, Dbl, Plt                             |
|              | 805109        | Control Head, 30, Sngl, Blk                            |
|              | 805110        | Control Head, 30, Dbl, Blk                             |
| 2            | 800948        | Motor, Drive Assy., Sst<br>(PTS #11031315 See Ref #14) |
|              | 801734        | Motor, Drive Assy., Plt<br>(PTS #11031315 See Ref #14) |
|              | 801733        | Motor, Drive Assy., Blk<br>(PTS #11031315 See Ref #14) |
|              | 801231        | C-Channel Bottom, 30", Sst                             |
| 3            | 801738        | C-Channel Bottom, 30", Plt                             |
|              | 801740        | C-Channel Bottom, 30", Blk                             |
| 4            | 801230        | C-Channel Top, 30", Sst                                |
|              | 801737        | C-Channel Top, 30", Plt                                |
| 5            | 801739        | C-Channel Top, 30", Blk                                |
|              | 802964        | Pin, Stop, Control Panel                               |
| 6            | 801538        | Screw, 8-32x1/2"                                       |
| 7            | 802791        | Plate, Mounting, Right, Ctrl Panel                     |
| 8            | 803484        | Bearing, Flange, Control Panel                         |
| 9            | 801920        | Bracket, Switch, Control Panel                         |
| 10           | 801549        | Screw, 8-18x1/2"                                       |
| 11           | 801051        | Switch, Actuation, Control Panel                       |
| 12           | 801677        | Screw, 2-56x3/8"                                       |
| 13           | 800704        | Plunger, Control Display                               |

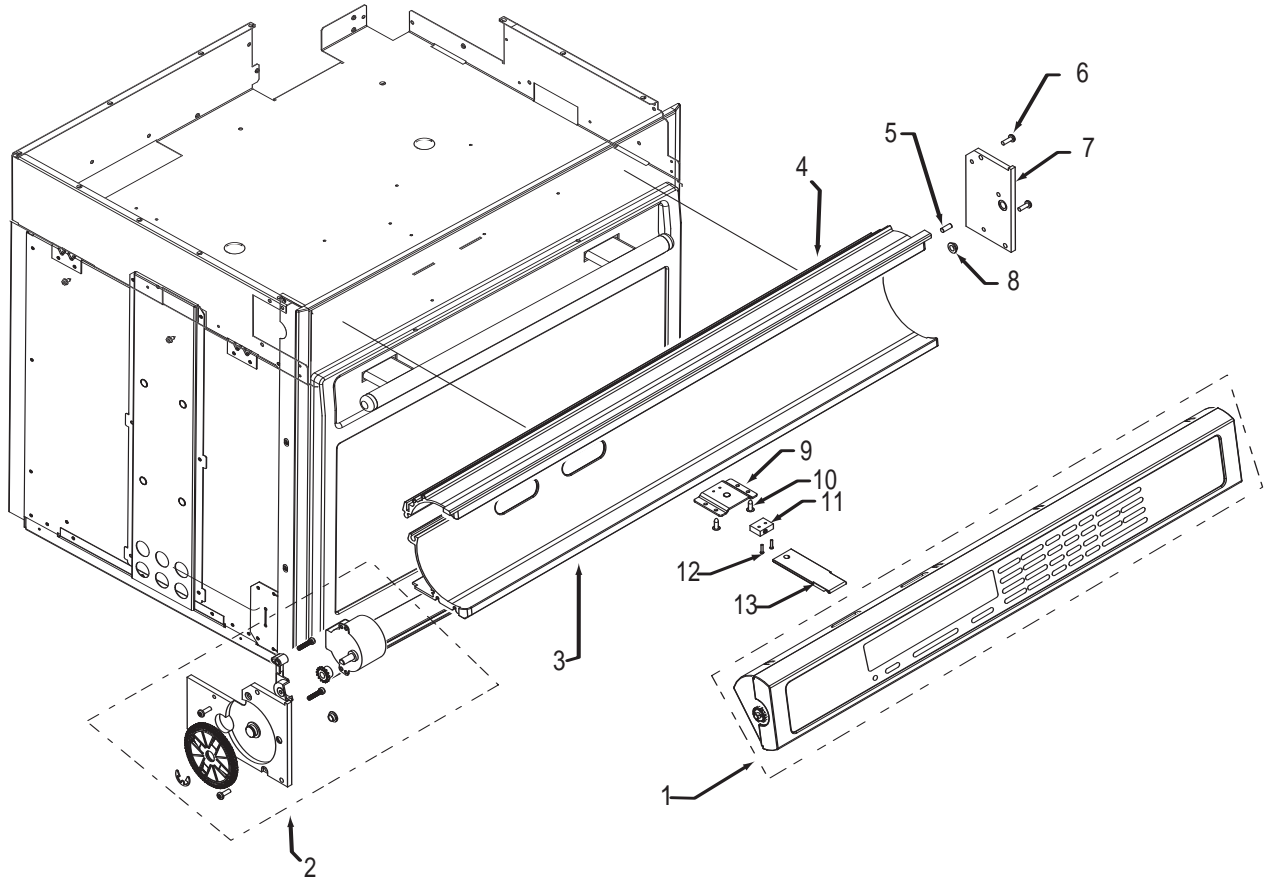
## 36" Oven Control Panel Parts List Single Oven

| <u>Ref #</u> | <u>Part #</u> | <u>Description</u>                                     |
|--------------|---------------|--|
| 1            | 805105        | Control Head, 36, Sngl, Sst                            |
|              | 805108        | Control Head, 36, Sngl, Plt                            |
|              | 805111        | Control Head, 36, Sngl, Blk                            |
| 2            | 800948        | Motor, Drive Assy., Sst<br>(PTS #11031315 See Ref #14) |
|              | 801734        | Motor, Drive Assy., Plt<br>(PTS #11031315 See Ref #14) |
|              | 801733        | Motor, Drive Assy., Blk<br>(PTS #11031315 See Ref #14) |
| 3            | 801525        | C-Channel Bottom, 36", Sst                             |
|              | 801742        | C-Channel Bottom, 36", Plt                             |
| 4            | 801744        | C-Channel Bottom, 36", Blk                             |
|              | 801526        | C-Channel Top, 36", Sst                                |
| 5            | 801741        | C-Channel Top, 36", Plt                                |
|              | 801743        | C-Channel Top, 36", Blk                                |
| 6            | 802964        | Pin, Stop, Control Panel                               |
| 7            | 801538        | Screw, 8-32x1/2"                                       |
| 8            | 802791        | Plate, Mounting, Right, Ctrl Panel                     |
| 9            | 803484        | Bearing, Flange, Control Panel                         |
| 10           | 801920        | Bracket, Switch, Control Panel                         |
| 11           | 801549        | Screw, 8-18x1/2"                                       |
| 12           | 801051        | Switch, Actuation, Control Panel                       |
| 13           | 801677        | Screw, 2-56x3/8"                                       |
| 13           | 800704        | Plunger, Stainless Steel                               |

### Not Shown

803319 Spring, Ribbon Cable, Short

**Oven Control Panel Exploded View  
Single and Double Oven**



## 30" Oven Modules Parts List Single and Double Oven

| Ref # | Part # | Description                                      |
|-------|--------|--|
| 1     | 801542 | Screw, 8-18x3/8"                                 |
| 2     | 800381 | Fan, Cooling, Upper                              |
| 3     | 801224 | Bracket, Air Diverter Top                        |
| 4     | 801363 | Control Board, Stepper Motor                     |
| 5     | 800950 | Transformer, Light                               |
| 6     | 801912 | Strain Relief, Plastic                           |
| 7     | 800385 | Cover, Latch                                     |
| 8     | 803356 | Plate, Mounting Hardware                         |
| 9     | 806822 | Board, Relay, 30"/36"                            |
| 10    | 806874 | Controller, Oven, Single, 30"<br>(See SN Breaks) |
|       | 806551 | Controller, Oven, Single, 30"<br>(See SN Breaks) |
|       | 806875 | Controller, Oven, Double, 30"<br>(See SN Breaks) |
|       | 806552 | Controller, Oven, Double, 30"<br>(See SN Breaks) |
| 11    | 820130 | Bracket-Z, Latch, Top Oven                       |
| 12    | 800383 | Bracket, Support, Top Module                     |
| 13    | 800375 | Bracket, Cord, Power                             |
| 14    | 804537 | Thermal Cut Out                                  |
| 15    | 800263 | Latch, Motorized                                 |
| 16    | 807542 | Pan, Module, 30"                                 |
| 17    | 800386 | Pan, Middle, DO                                  |
| 18    | 801212 | Bracket, Air Diverter, DO                        |
| 19    | 820129 | Bracket-Z, Latch, Bottom Oven, DO                |

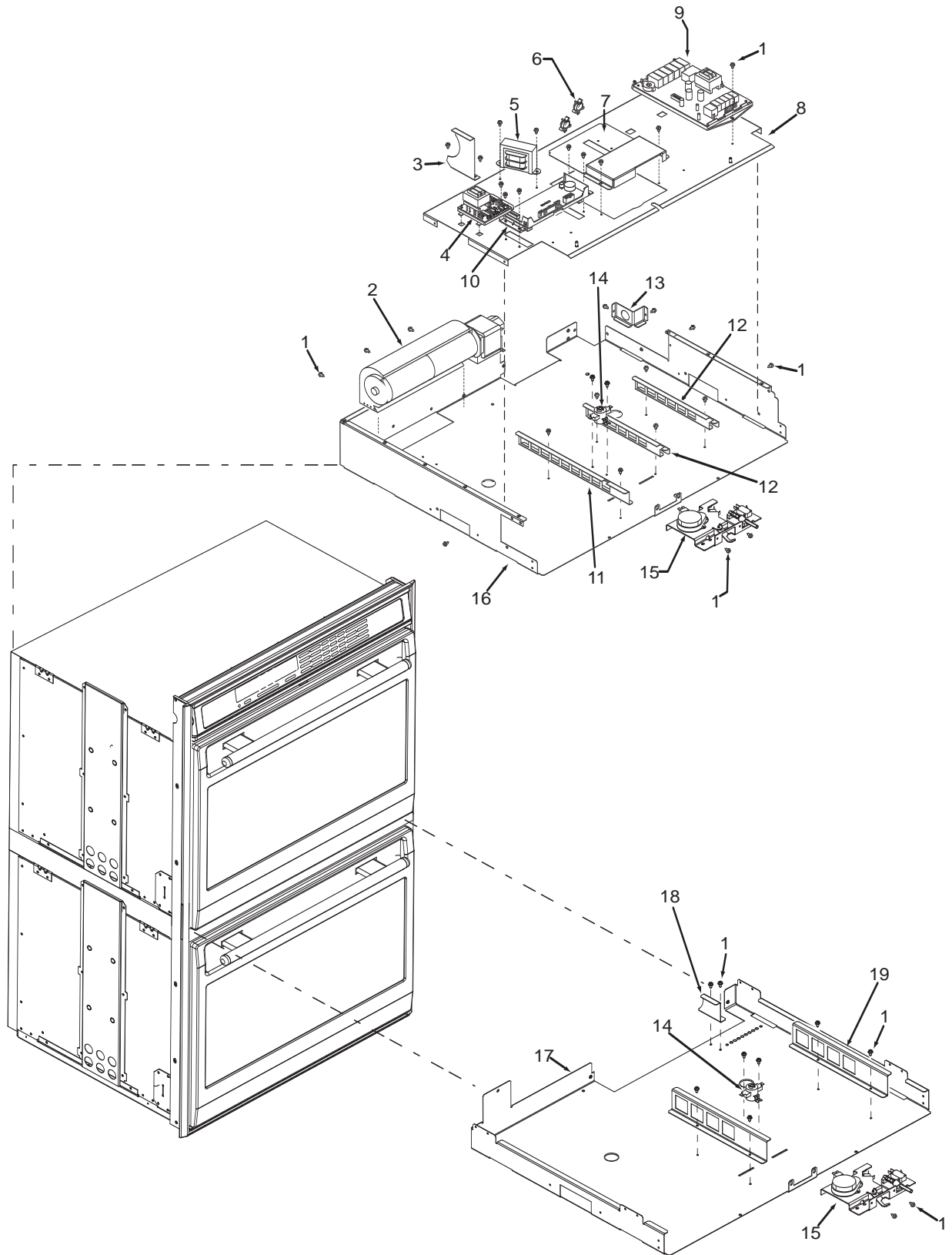
## 36" Oven Modules Parts List Single Oven

| Ref # | Part # | Description                                    |
|-------|--------|--|
| 1     | 801542 | Screw, 8-18x3/8"                               |
| 2     | 800381 | Fan, Cooling, Upper                            |
| 3     | 801224 | Bracket, Air Diverter Top                      |
| 4     | 801363 | Control Board, Stepper Motor                   |
| 5     | 800950 | Transformer, Light                             |
| 6     | 801912 | Strain Relief, Plastic                         |
| 7     | 800385 | Cover, Latch                                   |
| 8     | 803356 | Plate, Mounting Hardware                       |
| 9     | 806822 | Board, Relay, 30"/36"                          |
| 10    | 806874 | Oven controller, Single 36"<br>(See SN Breaks) |
|       | 806560 | Oven controller, Single 36"<br>(See SN Breaks) |
| 11    | 820130 | Bracket-Z, Latch                               |
| 12    | 800383 | Bracket, Support, Top Module                   |
| 13    | 800375 | Bracket, Cord, Power                           |
| 14    | 804537 | Thermal Cut Out                                |
| 15    | 800263 | Latch, Motorized                               |
| 16    | 807543 | Pan, Module, 36"                               |

### Not Shown

|        |                                 |
|--------|---------------------------------|
| 800714 | Cable, Relay to Controller, 28" |
| 809450 | Cable, Relay to Controller, 21" |
| 801714 | Power Cord Conduit, Single      |
| 801252 | Power Cord Conduit, Double      |

**Oven Modules Exploded View  
Single and Double Oven**



## 30" Oven Cavity Parts List Single and Double Oven

| Ref # | Part # | Description                          |
|-------|--------|--------------------------------------|
| 1     | 803140 | Receptacle, Pizza Element            |
| 2     | N/A    | Cavity, Oven (Not Replaceable)       |
| 3     | 800307 | Light, Oven                          |
| 4     | 800943 | Cover, Probe Switch                  |
| 5     | 800942 | Switch, Probe                        |
| 6     | 800304 | Catalyst, Smoke                      |
| 7     | 809982 | Sensor, Temperature                  |
| 8     | 800701 | Fan, Convection Assy., Cw            |
| 9     | 801544 | Screw, 8-32x1/2"                     |
| 10    | 801122 | Pan, Broil Element                   |
| 11    | 801120 | Element, Broil, 30"                  |
| 12    | 800368 | Guide, Rack, Right                   |
| 13    | 802704 | Screw, 8-32x1/2 Lo Profile           |
| 14    | 801141 | Guide, Rack, Left                    |
| 15    | 802898 | Convection Baffle Assembly, 30"      |
| 16    | 801417 | Plate, Retainer                      |
| 17    | 803141 | Receptacle, Plug, Ceramic            |
| 18    | 801049 | Nut, 8-32 Keps                       |
| 19    | 809818 | Fan, Convection Assy., Ccw           |
| 20    | 800529 | Probe, Temperature                   |
| 21    | 802988 | Rack, Oven 30"                       |
| 22    | 803062 | Rack, Oven Flat 30"                  |
| 23    | 803859 | Stone, Pizza                         |
| 24    | 800735 | Rack, Pizza Stone, 30"               |
| 25    | 800717 | Element, Pizza 3500 Watt 230V        |
| 26    | 803373 | Clip, Retainer Hinge                 |
| 27    | 802929 | Screw 6-20X5/8 PH TRS HD T-AB, Black |
| 28    | 803323 | Cover, Plate                         |
| 29    | 804712 | Accessory Pkg Broiler Pan Set        |

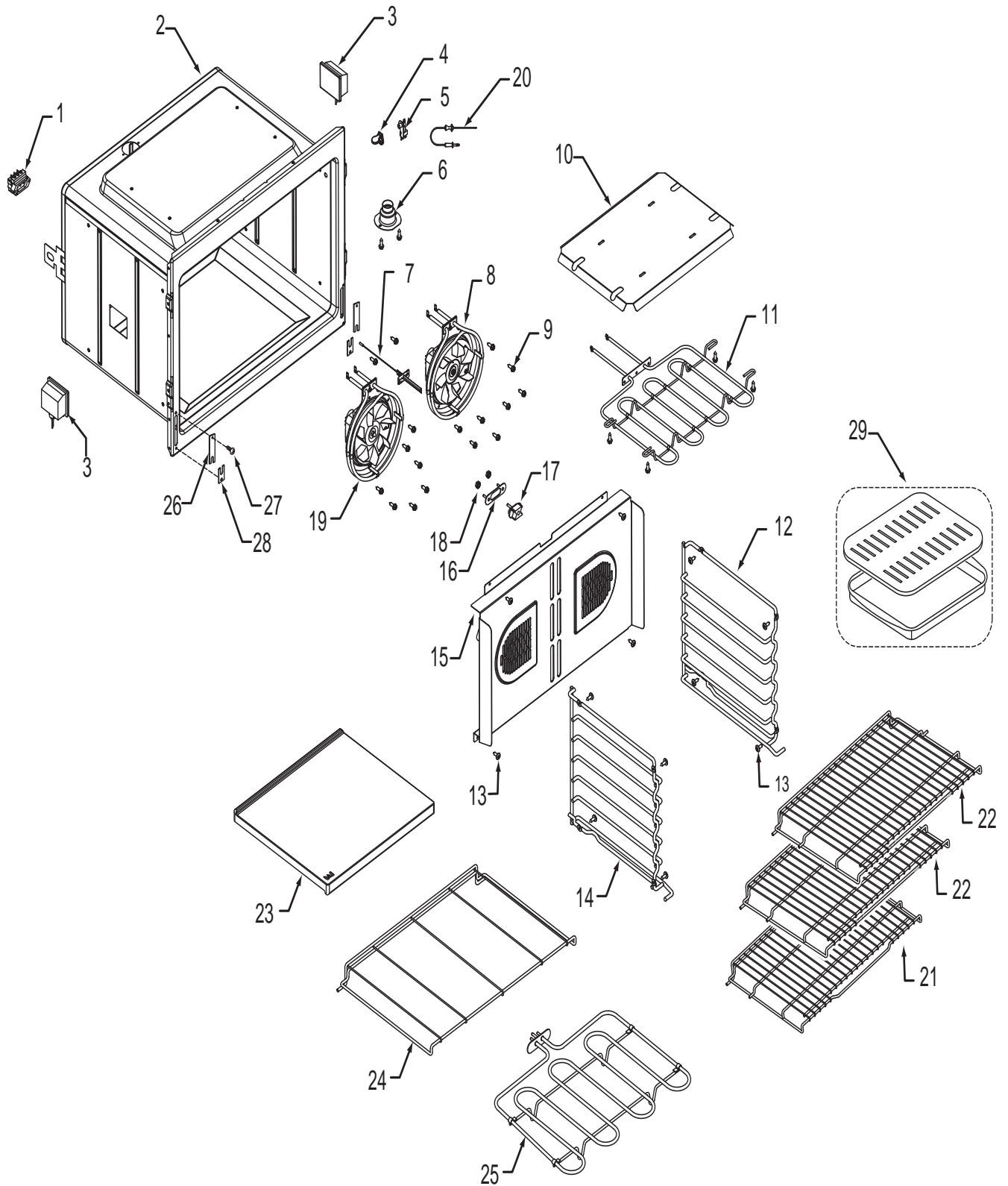
## 36" Oven Cavity Parts List Single Oven

| Ref # | Part # | Description                          |
|-------|--------|--------------------------------------|
| 1     | 803140 | Receptacle, Pizza Element            |
| 2     | N/A    | Cavity, Oven (Not Replaceable)       |
| 3     | 800307 | Light, Oven                          |
| 4     | 800493 | Cover, Probe Switch                  |
| 5     | 800942 | Switch, Probe                        |
| 6     | 800304 | Catalyst, Smoke                      |
| 7     | 809982 | Sensor, Temperature                  |
| 8     | 800701 | Fan, Convection Assy., Cw            |
| 9     | 801544 | Screw, 8-32x1/2"                     |
| 10    | 801616 | Deflector, Pan Broil                 |
| 11    | 801615 | Element, Broil, 36"                  |
| 12    | 800734 | Guide, Rack, Right                   |
| 13    | 802704 | Screw, 8-32x1/2 Lo Profile           |
| 14    | 801142 | Guide, Rack, Left                    |
| 15    | 802900 | Convection Baffle Assembly, 36"      |
| 16    | 801417 | Plate, Retainer                      |
| 17    | 803141 | Receptacle, Plug, Ceramic            |
| 18    | 801049 | Nut, 8-32 Keps                       |
| 19    | 809818 | Fan, Convection Assy., Ccw           |
| 20    | 800529 | Probe, Temperature                   |
| 21    | 802989 | Rack, Oven 36"                       |
| 22    | 803063 | Rack, Oven Flat 36"                  |
| 23    | 803859 | Stone, Pizza                         |
| 24    | 800736 | Rack, Pizza Stone, 36"               |
| 25    | 800717 | Element, Pizza 3500 Watt 230V        |
| 26    | 803373 | Clip, Retainer Hinge                 |
| 27    | 802929 | Screw 6-20X5/8 PH TRS HD T-AB, Black |
| 28    | 803323 | Cover, Plate                         |
| 29    | 804712 | Accessory Pkg Broiler Pan Set        |

### Not Shown

|        |            |
|--------|------------|
| 803816 | Light Bulb |
| 801949 | Pizza Peel |

**Oven Cavity Exploded View  
Single and Double Oven**



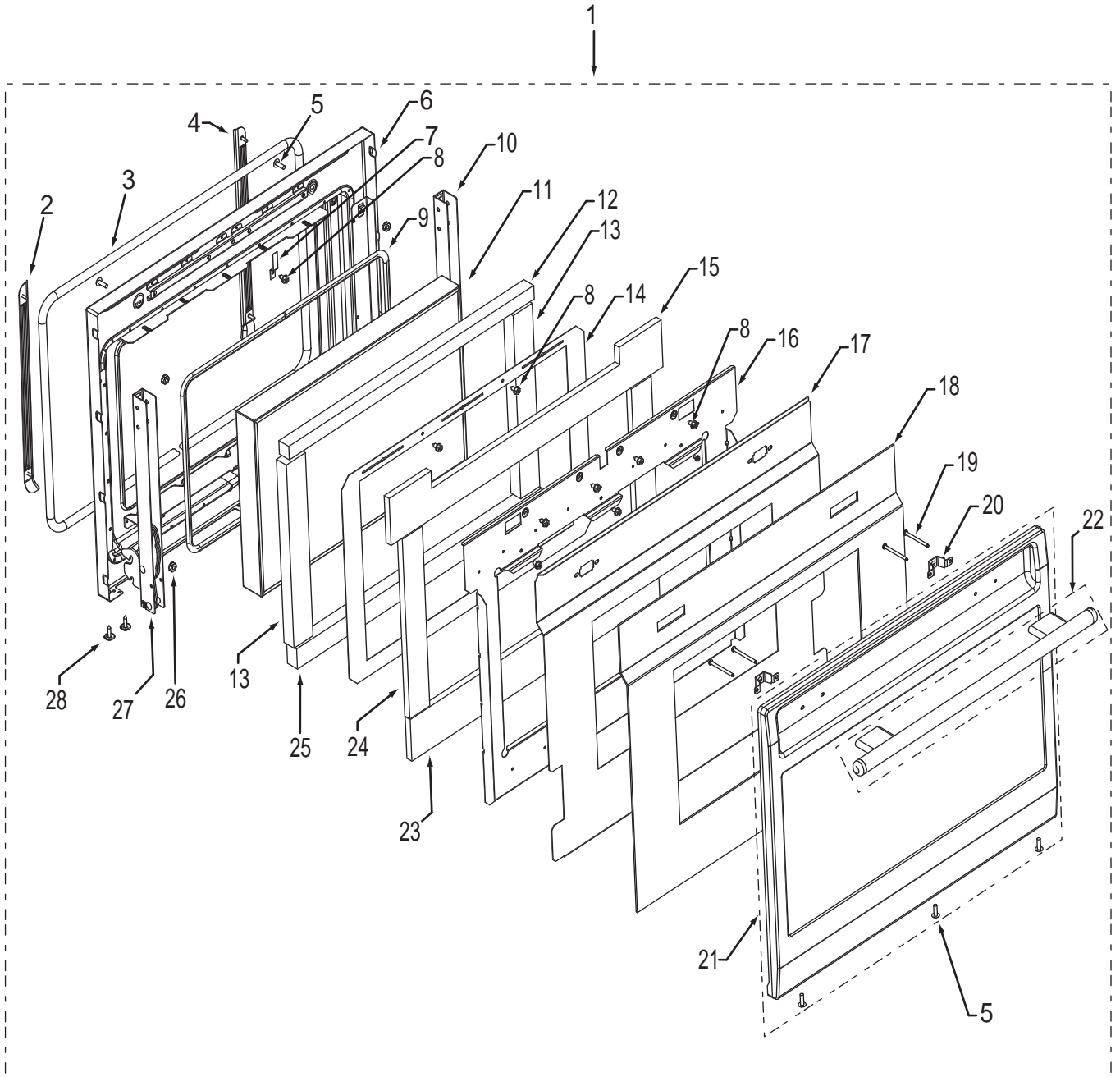
## 30" Oven Door Parts List Single and Double Oven

| Ref # | Part # | Description                                   |
|-------|--------|---|
| 1     |        | *Special order, Call Factory Parts Department |
| 2     | 800523 | Left Door Rack Guide, 30", assy               |
| 3     | 803324 | Gasket, Door, 30"                             |
| 4     | 800522 | Right Door Rack Guide, 30"                    |
| 5     | 801548 | Screw, 8-18x1/2"                              |
| 6     | 807708 | Svce Component, Door - 30"                    |
| 7     | 801102 | Striker Plate, Door Latch                     |
| 8     | 801542 | Screw, 8-18x3/8"                              |
| 9     | 800318 | Gasket, Rope, Glass Pack, 30"                 |
| 10    | 800915 | Hydraulic Oven Door Hinge                     |
| 11    | 809553 | Triple Pane Oven Glass Pack, 30"              |
| 12    | 806610 | Insulation, Door, Inner Top, 30"              |
| 13    | 806595 | Insulation, Door, Inner, Sides, 30"           |
| 14    | 800319 | Shield, Heat, Inner, Door, 30"                |
| 15    | 806602 | Insulation, Door, Center, Top, 30"            |
| 16    | 820116 | Heat Deflector, Center, 30"                   |
| 17    | 800315 | Shield, Heat, Door, 30"                       |
| 18    | 806596 | Insulation, Door, Outer, 30"                  |
| 19    | 801540 | Screw, 10-24x1/2"                             |
| 20    | 800314 | Bracket, Door, Outer, Mounting                |
| 21    | 802940 | Door Skin, Outer w/window, 30" F/S            |
|       | 803227 | Door Skin, Outer w/window, 30" U/S            |
|       | 803232 | Door Skin, Outer w/window, 30" F/S, No Logo   |
|       | 803235 | Door Skin, Outer w/window, 30" U/S, No Logo   |
|       | 803230 | Door Skin, Outer w/window, 30" U/B            |
|       | 803236 | Door Skin, Outer w/window, 30" U/B, No Logo   |
|       | 803231 | Door Skin, Outer w/window, 30" U/P            |
|       | 803237 | Door Skin, Outer w/window, 30" U/P, No Logo   |
| 22    | 801204 | Handle, Oven Door, Assy., 30", Sst            |
|       | 801599 | Handle, Oven Door, Assy., 30", Plt            |
|       | 801600 | Handle, Oven Door, Assy., 30", Blk            |
| 23    | 806606 | Insulation, Door, Center, Back, 30"           |
| 24    | 806605 | Insulation, Door, Center, Side, 30"           |
| 25    | 806615 | Insulation, Door, Inner, Top/Btm, 30"         |
| 26    | 801049 | Nut, 8-32                                     |
| 27    | 800689 | Hinge, Wall Oven                              |
| 28    | 802929 | Sems Ph Hd Washer, 6-20x5/8                   |

## 36" Oven Door Parts List Single Oven

| Ref # | Part # | Description                                   |
|-------|--------|---|
| 1     |        | *Special order, Call Factory Parts Department |
| 2     | 801816 | Left Door Rack Guide, 36", assy               |
| 3     | 803325 | Gasket, Door, 36"                             |
| 4     | 801815 | Right Door Rack Guide, 36"                    |
| 5     | 801548 | Screw, 8-18x1/2"                              |
| 6     | 807709 | Svce Component, Door - 36"                    |
| 7     | 801102 | Striker Plate, Door Latch                     |
| 8     | 801542 | Screw, 8-18x3/8"                              |
| 9     | 801764 | Gasket, Rope, Glass Pack, 36"                 |
| 10    | 800689 | Hinge, Wall Oven                              |
| 11    | 801448 | Triple Pane Oven Glass Pack, 36"              |
| 12    | 806610 | Insulation, Door, Inner Top, 36"              |
| 13    | 806617 | Insulation, Door, Inner, Sides, 36"           |
| 14    | 801765 | Shield, Heat, Inner, Door, 36"                |
| 15    | 806602 | Insulation, Door, Center, Top                 |
| 16    | 801766 | Heat Deflector, Center, 36"                   |
| 17    | 803378 | Shield, Heat, Door, 36"                       |
| 18    | 801577 | Insulation, Door, Outer, 36"                  |
| 19    | 801540 | Screw, 10-24x1/2"                             |
| 20    | 800314 | Bracket, Door, Outer, Mounting                |
| 21    | 803245 | Door Skin, Outer w/window, 36" U/S            |
|       | 803246 | Door Skin, Outer w/window, 36" U/B            |
|       | 803247 | Door Skin, Outer w/window, 36" U/P            |
| 22    | 801206 | Handle, Oven Door, Assy., 36", Sst            |
|       | 801893 | Handle, Oven Door, Assy., 36", Plt            |
|       | 801892 | Handle, Oven Door, Assy., 36", Blk            |
| 23    | 806606 | Insulation, Door, Center, Back                |
| 24    | 806623 | Insulation, Door, Center, Side, 36"           |
| 25    | 806615 | Insulation, Door, Inner, Top/Btm, 36"         |
| 26    | 801049 | Nut, 8-32                                     |
| 27    | 800915 | Hydraulic Oven Door Hinge                     |
| 28    | 802929 | Sems Ph Hd Washer, 6-20x5/8                   |

**Oven Door Exploded View  
Single and Double Oven**



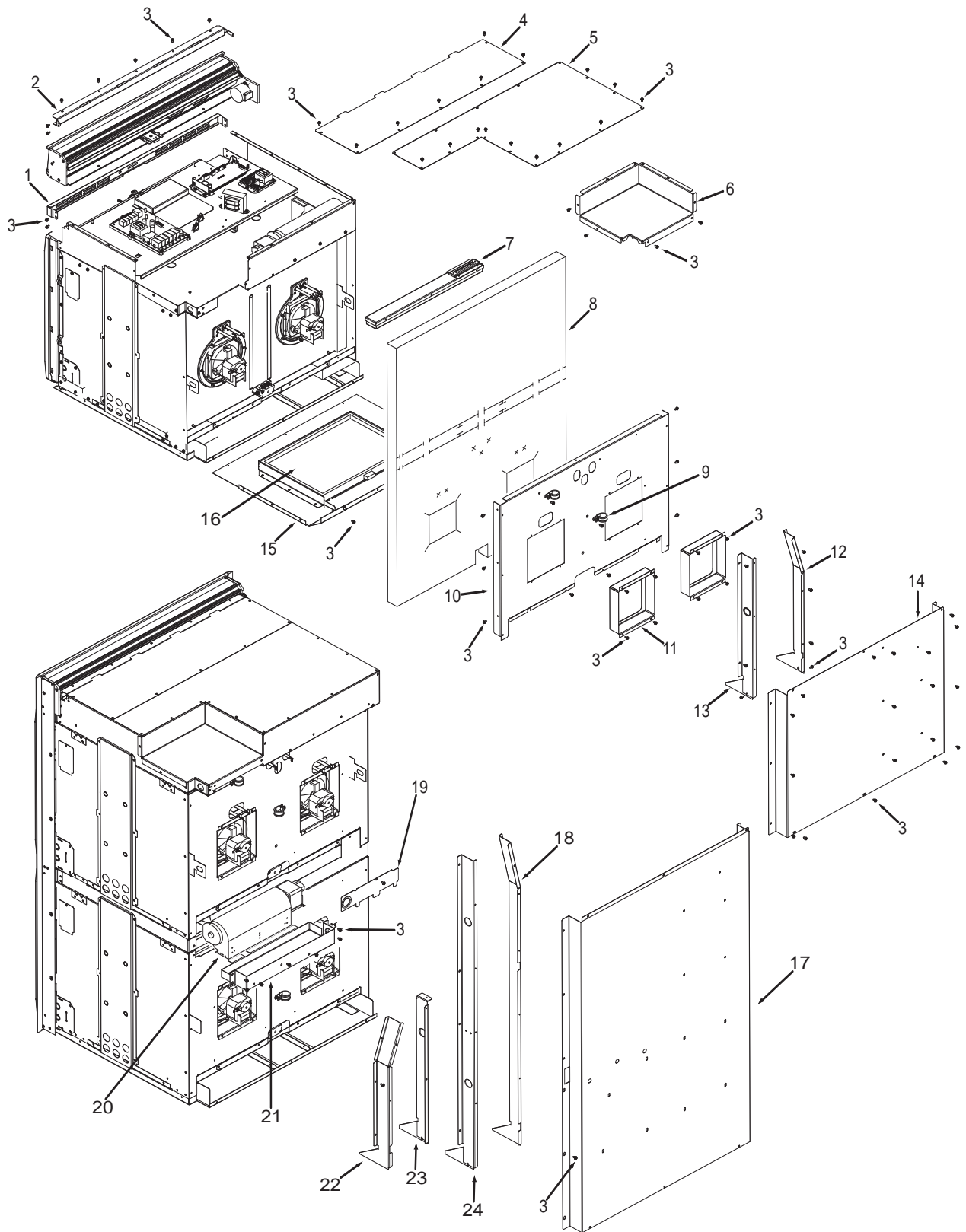
## 30" Back View Parts List Single and Double Oven

| <u>Ref #</u> | <u>Part #</u> | <u>Description</u>                  |
|--------------|---------------|-------------------------------------|
| 1            | 800374        | Face Plate, Venting, Upper          |
| 2            | 800382        | Stiffener, Top Module               |
| 3            | 801542        | Screw, 8-18x3/8"                    |
| 4            | 800379        | Panel, Upper, Front                 |
| 5            | 820118        | Cover, Rear, Top Module             |
| 6            | 801705        | Cover, Small, Top Module            |
| 7            | 801700        | Catalyst, Sub Assembly              |
| 8            | 805976        | Insulation, Cavity, Top             |
|              | 805977        | Insulation, Cavity, Top Dbl         |
|              | 805978        | Insulation, Cavity, Back            |
| 9            | 801913        | Strain Relief, Metal                |
| 10           | 802919        | Panel, Back, Top Insulation         |
| 11           | 802918        | Panel, Inner, Back                  |
| 12           | 801290        | Channel, Divider, Side Exhaust      |
| 13           | 803074        | Channel, Divider, Air, Single       |
| 14           | 820117        | Panel, Back, Single Oven            |
| 15           | 801702*       | Bake, Pan Assembly                  |
| 16           | 800360*       | Element, Bake                       |
| 17           | 800388        | Panel, Back, Double Oven            |
| 18           | 801169        | Channel, Divider Side, Exhaust, Lrg |
| 19           | 801208        | Cover, Back Panel, Small            |
| 20           | 801143        | Fan, Cooling, Lower                 |
| 21           | 801209        | Cover, Fan, Cooling                 |
| 22           | 801170        | Channel, Divider Side Exhaust, Sml  |
| 23           | 801171        | Channel, Divider, Cooling           |
| 24           | 800393        | Channel, Divider, Cooling, DO       |

## 36" Back View Parts List Single Oven

| <u>Ref #</u> | <u>Part #</u> | <u>Description</u>              |
|--------------|---------------|---------------------------------|
| 1            | 801536        | Face Plate, Venting, Upper, 36" |
| 2            | 801582        | Stiffener, Top Module, 36"      |
| 3            | 801542        | Screw, 8-18x3/8"                |
| 4            | 801478        | Panel, Top Module, Front, 36"   |
| 5            | 801331        | Cover, Large, 36"               |
| 6            | 801803        | Cover, Small, Top Module, 36"   |
| 7            | 801700        | Catalyst, Sub Assembly          |
| 8            | 805979        | Insulation, Cavity, Top, 36"    |
|              | 805980        | Insulation, Cavity, Back, 36"   |
| 9            | 801913        | Strain Relief, Metal, 36"       |
| 10           | 803329        | Panel, Insulation, Back, 36"    |
| 11           | 802918        | Panel, Inner, Back, 36"         |
| 12           | 803334        | Channel, Exhaust, 36"           |
| 13           | 803327        | Channel, Cooling, 36"           |
| 14           | 801506        | Panel, Cover, Back, 36"         |
| 15           | 802700*       | Bake, Pan Sub Assembly, 36"     |
| 16           | 800360*       | Element, Bake, 36"              |

\* See Bake Pan Assembly exploded view page 5-14.

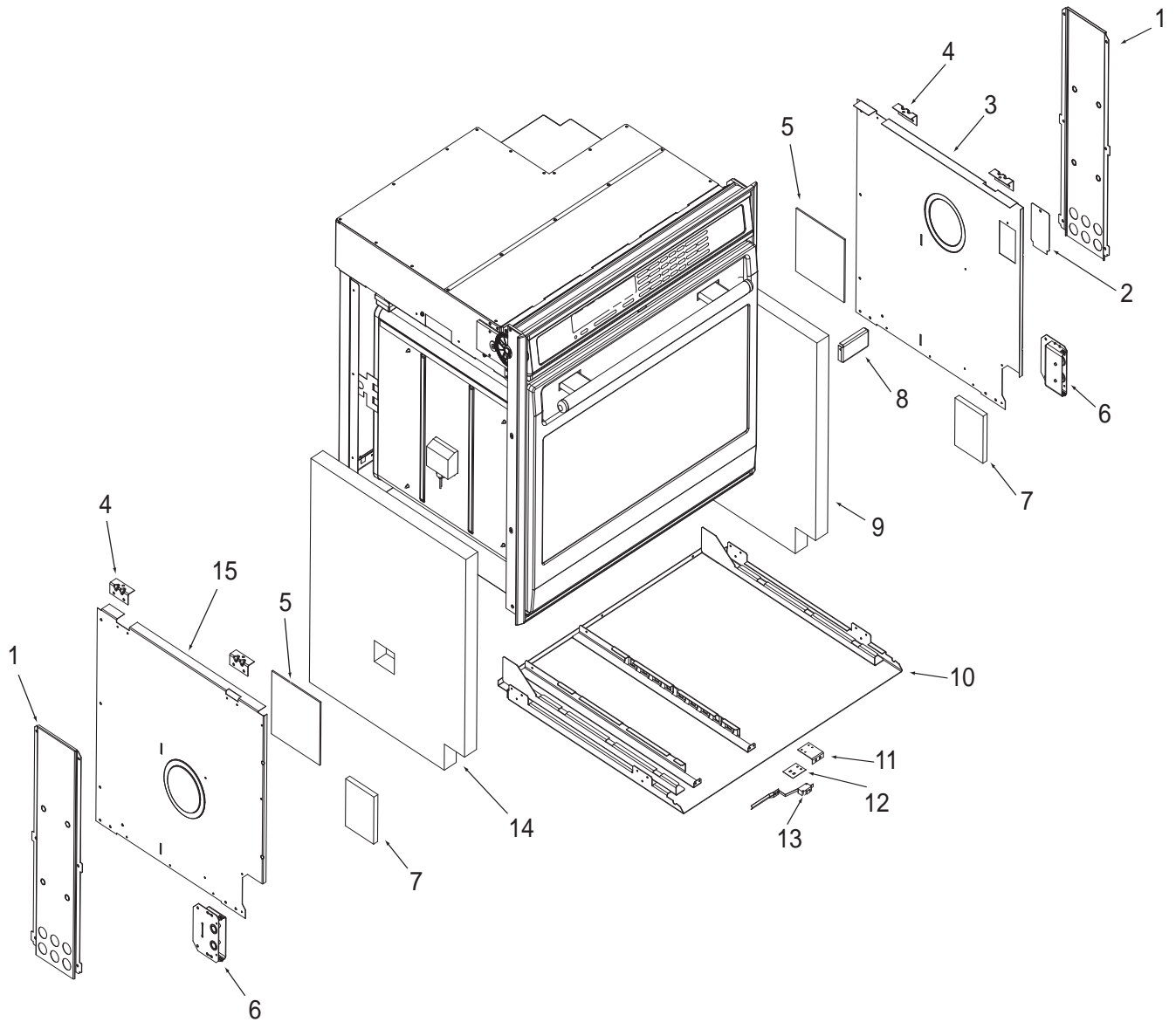
**Oven Back Exploded View  
Single and Double Oven**

**30" Side and Base View Parts List  
Single and Double Oven**

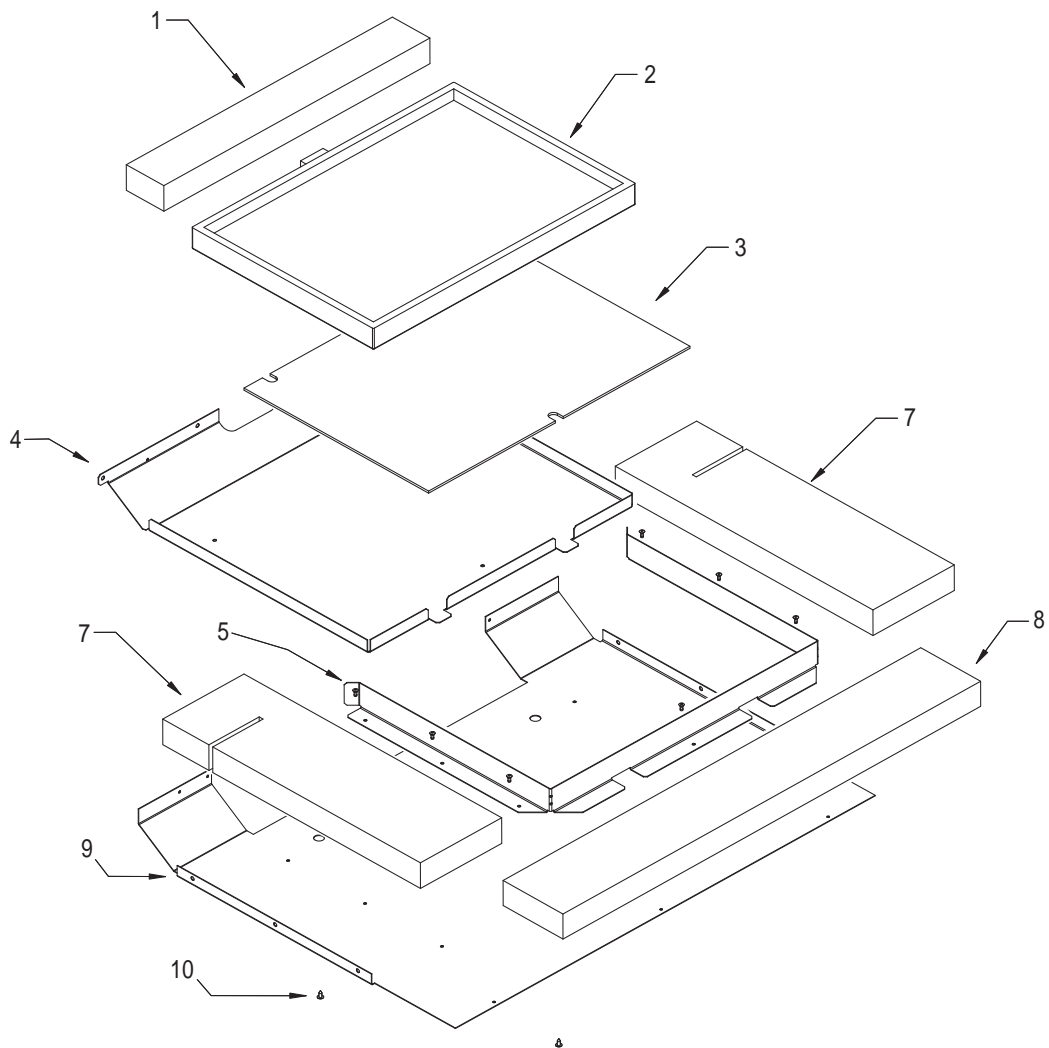
| <u>Ref #</u> | <u>Part #</u> | <u>Description</u>             |
|--------------|---------------|--------------------------------|
| 1            | 820125        | Channel, Upper Venting         |
| 2            | 800890        | Cover, Temperature Probe       |
| 3            | 801721        | Enclosure, Rt Side 30"         |
| 4            | 801475        | Bracket, Hold Down             |
| 5            | 801530        | Insulation, Light              |
| 6            | 800926        | Hinge, Pocket                  |
| 7            | 806612        | Insulation, Cavity, Hinge      |
| 8            | 800364        | Stiffener, U-Wrap              |
| 9            | 806608        | Insulation, Cavity, Right Side |
| 10           | 804549        | Base, Assembly Single          |
|              | 804541        | Base, Assembly, Double         |
| 11           | 801901        | Plate, Fan Apparency           |
| 12           | 801728        | Insulation, Switch             |
| 13           | 802728        | Switch, Fan Apparency          |
| 14           | 806609        | Insulation, Cavity, Left Side  |
| 15           | 801720        | Enclosure, Left Side, 30"      |

**36" Side and Base View Parts List  
Single Oven**

| <u>Ref #</u> | <u>Part #</u> | <u>Description</u>             |
|--------------|---------------|--------------------------------|
| 1            | 801335        | Channel, Upper Venting         |
| 2            | 800890        | Cover, Temperature Probe       |
| 3            | 801724        | Enclosure, Rt Side             |
| 4            | 801475        | Bracket, Hold Down             |
| 5            | 801530        | Insulation, Light              |
| 6            | 800926        | Hinge, Pocket                  |
| 7            | 806612        | Insulation, Cavity, Hinge      |
| 8            | 800364        | Stiffener, U-Wrap              |
| 9            | 806619        | Insulation, Cavity, Right Side |
| 10           | 804553        | Base, Assembly, 36"            |
| 11           | 801901        | Plate, Fan Apparency           |
| 12           | 801728        | Insulation, Switch             |
| 13           | 802728        | Switch, Fan Apparency          |
| 14           | 806618        | Insulation, Cavity, Left Side  |
| 15           | 801723        | Enclosure, Left Side,          |

**Oven Side and Base Exploded View  
Single and Double Oven**

Bake Pan Assembly Exploded View  
Single and Double Oven



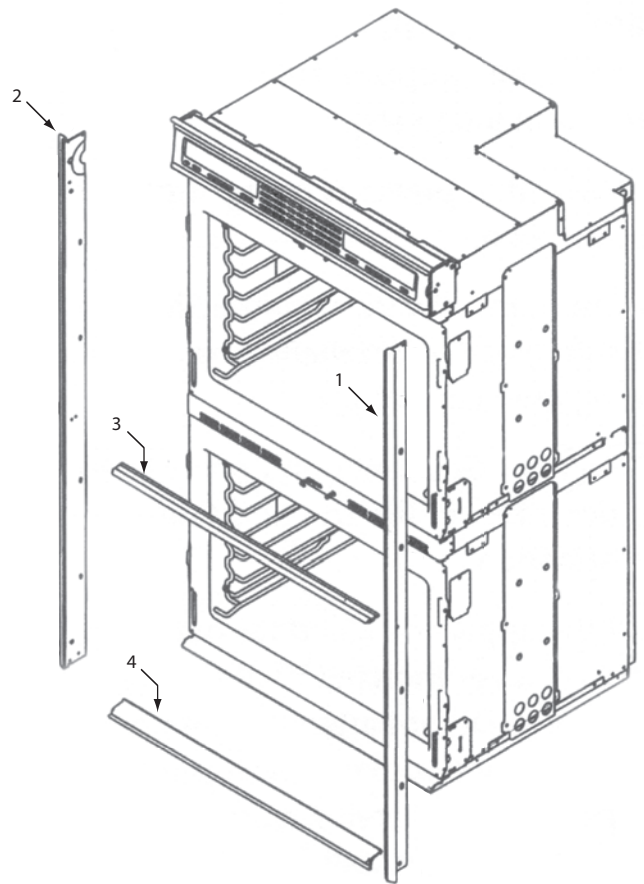
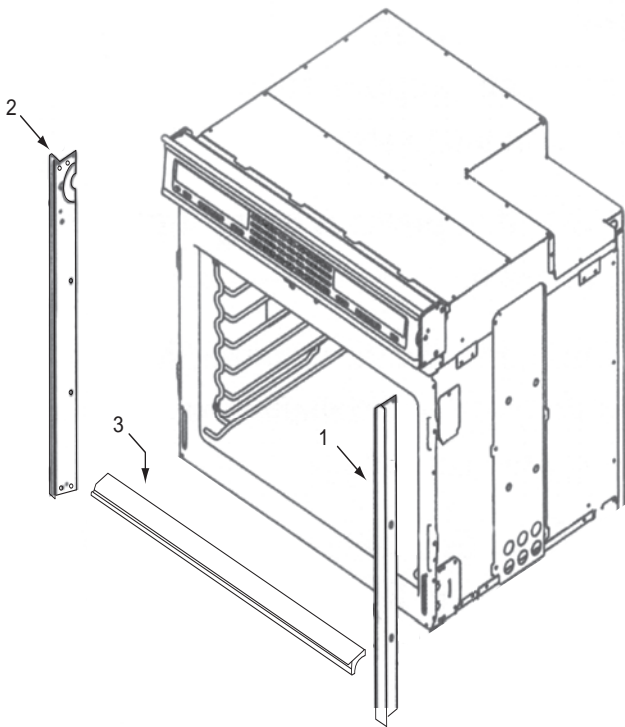
30" Bake Pan Parts List  
Single and Double Oven

| Ref # | Part # | Description                       |
|-------|--------|-----------------------------------|
| 1     | 806598 | Insulation, Bake Element , Behind |
| 2     | 800360 | Element, Bake                     |
| 3     | 801159 | Insulation, Bake Element, Under   |
| 4     | 800359 | Pan, Bake Element                 |
| 5     | 800358 | Bracket, Bake Element             |
| 6     | 801542 | Screw, 8-18x3/8"                  |
| 7     | 806604 | Insulation, Base, U-Wrap Sides    |
| 8     | 806634 | Insulation, Base, U-Wrap Front    |
| 9     | 801722 | Enclosure, Bottom, 30"            |
| 10    | 801553 | Screw, 6-20x3/8"                  |

36" Bake Pan Parts List  
Single Oven

| Ref # | Part # | Description                       |
|-------|--------|-----------------------------------|
| 1     | 806598 | Insulation, Bake Element , Behind |
| 2     | 800360 | Element, Bake                     |
| 3     | 801159 | Insulation, Bake Element, Under   |
| 4     | 800359 | Pan, Bake Element                 |
| 5     | 800358 | Bracket, Bake Element             |
| 6     | 801542 | Screw, 8-18x3/8"                  |
| 7     | 806620 | Insulation, Base, U-Wrap Sides    |
| 8     | 806621 | Insulation, Base, U-Wrap Front    |
| 9     | 801725 | Enclosure, Bottom, 36"            |
| 10    | 801553 | Screw, 6-20x3/8"                  |

**Trim Exploded View**



| <u>Model #</u> | <u>Ref#</u> | <u>Part #</u> | <u>Description</u>     |
|----------------|-------------|---------------|------------------------|
| SO30F/S        | 1           | 800706        | Extrusion, Side, Right |
|                | 2           | 800707        | Extrusion, Side, Left  |
|                | 3           | 805115        | Extrusion, Bottom      |
| SO36U/S        | 1           | 800939        | Extrusion, Side, Right |
|                | 2           | 800938        | Extrusion, Side, Left  |
|                | 3           | 802731        | Extrusion, Bottom      |
| SO30U/B        | 1           | 800525        | Extrusion, Side, Right |
|                | 2           | 800524        | Extrusion, Side, Left  |
|                | 3           | 805175        | Extrusion, Bottom      |
| SO36U/B        | 1           | 802740        | Extrusion, Side, Right |
|                | 2           | 802739        | Extrusion, Side, Left  |
|                | 3           | 802743        | Extrusion, Bottom      |

| <u>Model #</u> | <u>Ref#</u> | <u>Part #</u> | <u>Description</u>     |
|----------------|-------------|---------------|------------------------|
| DO30F/S        | 1           | 803967        | Extrusion, Side, Right |
|                | 2           | 800390        | Extrusion, Side, Left  |
|                | 3           | 802719        | Extrusion, Middle,     |
|                | 4           | 805115        | Extrusion, Bottom      |
| DO30U/S        | 1           | 800389        | Extrusion, Side, Right |
|                | 2           | 800390        | Extrusion, Side, Left  |
|                | 3           | 802719        | Extrusion, Middle,     |
|                | 4           | 805115        | Extrusion, Bottom      |
| SO30U/P        | 1           | 800518        | Extrusion, Side, Right |
|                | 2           | 800519        | Extrusion, Side, Left  |
|                | 4           | 805174        | Extrusion, Bottom      |
| SO36U/P        | 1           | 802742        | Extrusion, Side, Right |
|                | 2           | 802741        | Extrusion, Side, Left  |
|                | 4           | 802744        | Extrusion, Bottom      |
| DO30U/P        | 1           | 802738        | Extrusion, Side, Right |
|                | 2           | 802737        | Extrusion, Side, Left  |
|                | 3           | 802736        | Extrusion, Middle      |
|                | 4           | 805174        | Extrusion, Bottom      |
| DO30U/B        | 1           | 800528        | Extrusion, Side, Right |
|                | 2           | 800527        | Extrusion, Side, Left  |
|                | 3           | 800526        | Extrusion, Middle      |
|                | 4           | 805175        | Extrusion, Bottom      |