

## 48" Rangetop Top & Dress Panels Parts List

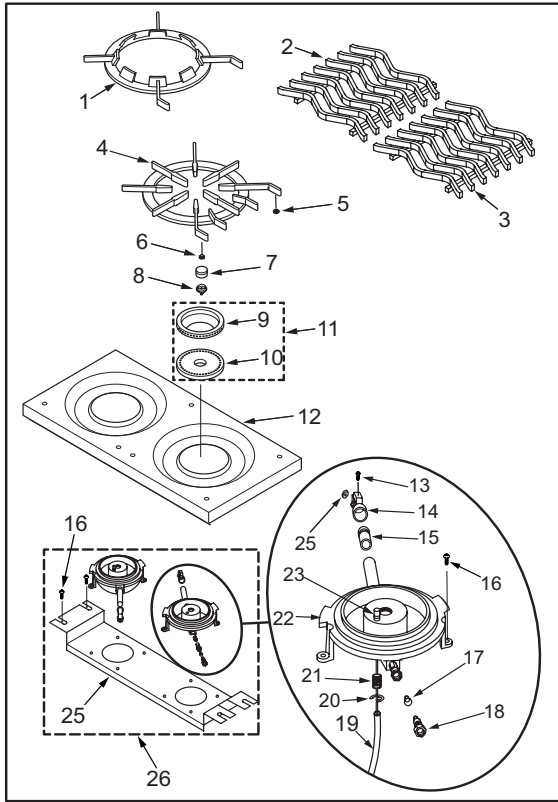
| Ref # | Part # | Description  | Ref # | Part # | Description  |
|-------|--------|--|-------|--------|--|
| 1     | 801669 | Grate, Wok (See SN Breaks)                                     | 40    | 804711 | Shield, Charbroiler Electrode  |
|       | 804230 | Grate, Wok (See SN Breaks)                                     | 41    | 801265 | Single Griddle Cover Kit - 11"                                       |
| 2     | 800146 | S Grate, Rear (See SN Breaks)                                  |       | 809311 | Griddle (See SN Breaks)  |
|       | 804229 | S Grate, Rear (See SN Breaks)                                  |       |        | Griddle Cover - 11" New Style  |
| 3     | 800137 | S Grate, Front (See SN Breaks)                                 |       | 809312 | Griddle (See SN Breaks)  |
|       | 804228 | S Grate, Front (See SN Breaks)                                 |       |        | Griddle Cover - 22" New Style  |
| 4     | 720829 | Grate, Spider (See SN Breaks)                                  |       | 801266 | Double Griddle Cover Kit - 22"                                       |
|       | 809099 | Grate, Spider (See SN Breaks)                                  |       |        | Griddle Old Style Griddle Cover & BackSplash (See SN Breaks)         |
| 5     | 722421 | Grate Foot Pad (See SN Breaks)                                 | 42    | 802508 | Griddle Assembly, 11"  |
| 6     | 722422 | Washer, Silicone, Spider Grate (See SN Breaks)                 |       | 802509 | Griddle Assembly, 22"  |
| 7     | 720801 | Burner, Inner Head, Plated                                     | 43    | 800067 | Seal, Griddle, 20"   |
|       | 800041 | Burner, Inner Head, Black Enamel                               | 44    | 800066 | Seal, Griddle, 9"  |
| 8     | 720887 | Base, Inner Burner   | 45    | 800048 | Orifice, IR Charbroiler, Natural Gas                                 |
|       | 800044 | Burner, Inner Base, Black Enamel                               |       | 800050 | Orifice, IR Charbroiler, LP Gas                                      |
| 9     | 720803 | Burner, Outer (See SN Breaks)                                  | 46    | 786127 | Baffle, Griddle  |
|       | 801150 | Cap, burner, Outer Head, Black Enamel                          | 47    | 803168 | Flex Tubing Service Package 3/8" x 18"                               |
| 10    | 720802 | Ring, Cross (See SN Breaks)                                    | 48    | 770093 | Solenoid, (Coil Only)  |
|       | 801151 | Ring, Burner, Inner Base, Black Enamel                         | 49    | 730229 | Screw #10-24 x 1-1/2"  |
| 11    | 803965 | Burner Ring/Cap, Service Package                               | 50    | 719376 | Elbow, Brass 3/8"  |
| 12    | 766446 | Top, Pressed Steel, Porcelain (See SN Breaks)                  |       | 719377 | Fitting, Straight 3/8"   |
|       | 805519 | Top, Pressed Steel, (See SN Breaks)                            | 51    | 804404 | Holder, Single Solenoid  |
| 13    | 722162 | Screw, Phillips Head   |       | 756302 | Holder, Double Solenoid  |
| 14    | 807864 | Holder, Jet Assembly   | 52    | 803167 | Flex Tubing Service Package 3/8" x 12"                               |
| 15    | 720886 | Venturi  | 53    | 807622 | Valve, Single Solenoid, w/fittings                                   |
| 16    | 730228 | Screw #10-24 x 1/2"  | 54    | 807623 | Valve, Double Solenoid, w/fittings                                   |
| 17    | 800882 | Orifice, Inner Burner, Natural Gas                             | 55    | 803374 | Vent, Frenchtop  |
|       | 800052 | Orifice, Inner Burner, LP Gas                                  | 56    | 786718 | Spacer, Rear   |
| 18    | 720888 | Fitting, 3/16"   | 57    | NLA    | Ring, Center French Top  |
| 19    | 719566 | Sleeve, 1/4" Fiberglass  | 58    | NLA    | Ring, Inner French Top   |
| 20    | 720822 | Ring   | 59    | NLA    | Ring, Outer French Top   |
| 21    | 807598 | Spring   | 60    | 806466 | Plate, French Top  |
| 22    | 801149 | Base, Burner   | 61    | 805658 | Components, Frenchtop  |
| 23    | 806483 | Service Components, Electrode                                  | 62    | 786727 | Spacer, Front - FT Cover   |
| 24    | 800872 | Orifice, Outer Burner, Natural Gas                             | 63    | 723063 | Ring, Flame  |
|       | 800051 | Orifice, Outer Burner, LP Gas                                  | 64    | 722521 | Burner Head  |
| 25    | 767615 | Panel, Burner Support  | 65    | 722536 | Venturi, Gas Hotplate  |
| 26    | 809019 | Burner Assembly - Also need to order 806483                    | 66    | 723011 | Burner Base  |
| 27    | 762215 | Backsplash, Decorative   | 67    | 786716 | Electrode, French Top  |
| 28    | 759715 | Cover, Charbroiler 11"<br>(Order 2 for Double Charbroiler 22") | 68    | 786719 | Pan, Burner  |
|       |        |  | 69    | 723010 | Baffle, Pan French Top   |
| 29    | 786081 | Rack, Charbroiler  | 70    | 722522 | Clip, Retaining  |
| 30    | 769593 | Frame, Charbroiler   | 71    | 800062 | Nut, Hotplate  |
| 31    | 722631 | Screen, Reverberator   | 72    | 800060 | Electrode Wire   |
| 32    | 762444 | Plate, Blank Off   |       | 800061 | Orifice, French Top Natural Gas                                      |
| 33    | 809183 | Burner, Infrared Assy, Griddle/Charb                           | 73    | 800061 | Orifice, French Top LP Gas   |
| 34    | 800048 | Orifice, IR Charbroiler, Natural Gas                           | 74    | 722530 | Holder, Jet Gas  |
|       | 800050 | Orifice, IR Charbroiler, LP Gas                                | 75    | 803170 | Flex Tubing Service Package 1/4" x 12"                               |
| 35    | 800258 | Elbow  | 76    | 808027 | End, Body LH   |
| 36    | 786978 | Baffle, Charbroiler  | 77    | 714522 | Insulation   |
| 37    | 786129 | Spacer, IR Burner  | 78    | 722270 | Rivet, Pop 3/16" Alum Multigrip                                      |
| 38    | 786029 | Bracket, Sparker   | 79    | 808026 | End, Body RH   |
| 39    | 714415 | Sparker  |       | 786714 | Pan, Grease SS (12-3/8" X 7")<br>(See S/N Breaks)                    |
| 40    | 804711 | Shield, Charbroiler Electrode                                  |       | 801687 | Tray, Grease Range (With Dimples, 11-1/2" X 9-1/2") (See S/N Breaks) |
|       |        |  | 80    | 801926 | 48" Roll Front Assy  |
|       |        |  | 81    | 787400 | Pan, Drip Assy. (See SN Breaks)                                      |
|       |        |  |       | 801472 | Drip Tray, 48" (See SN Breaks)                                       |

### Not Shown

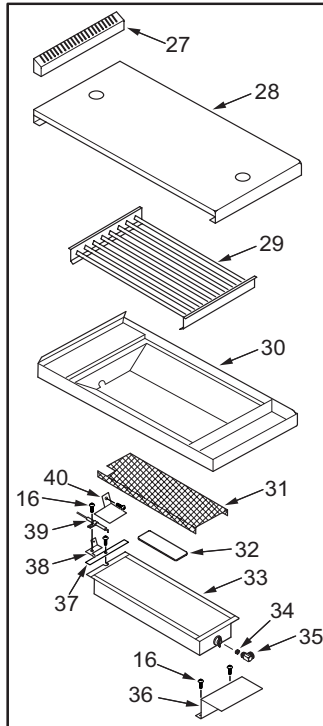
|        |                                  |        |                               |
|--------|----------------------------------|--------|-------------------------------|
| 801256 | Slide Lh Drip Tray               | 801257 | Slide Rh Drip Tray            |
| 805637 | Cover, Frenchtop Assy-Pro Series | 787520 | Hook, Center Plate French Top |
| 722218 | Hook, Porcelain Top Remover      | 767627 | Spacer, Burner Support        |
| 722537 | Seal, O-Ring Gas Hotplate (FT)   | 807066 | Shield, Rubber - Electrode    |

**48" Rangetop Top & Dress Panels View**

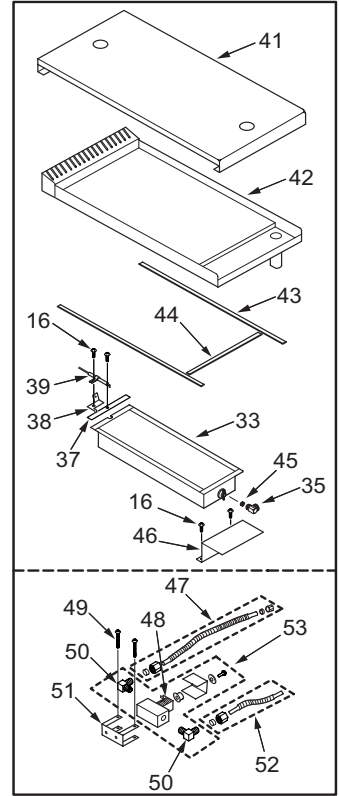
Surface Burner



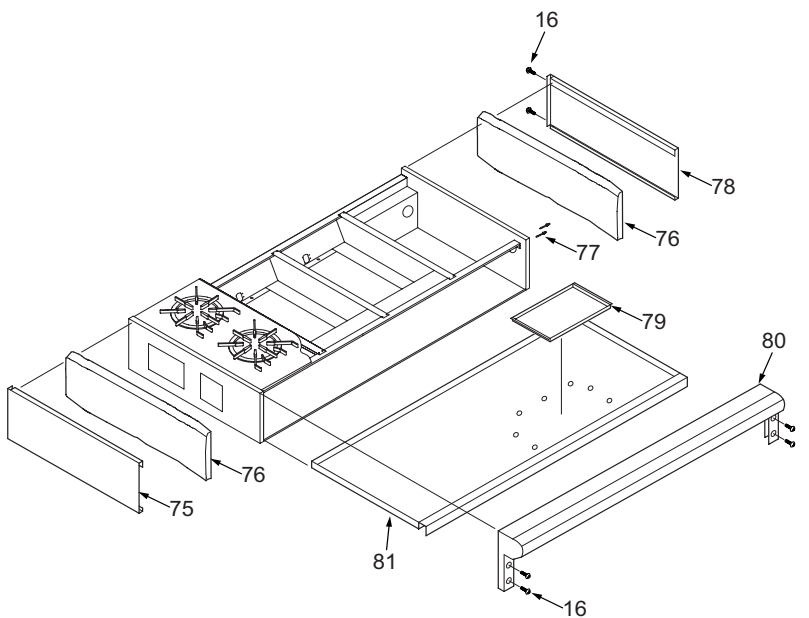
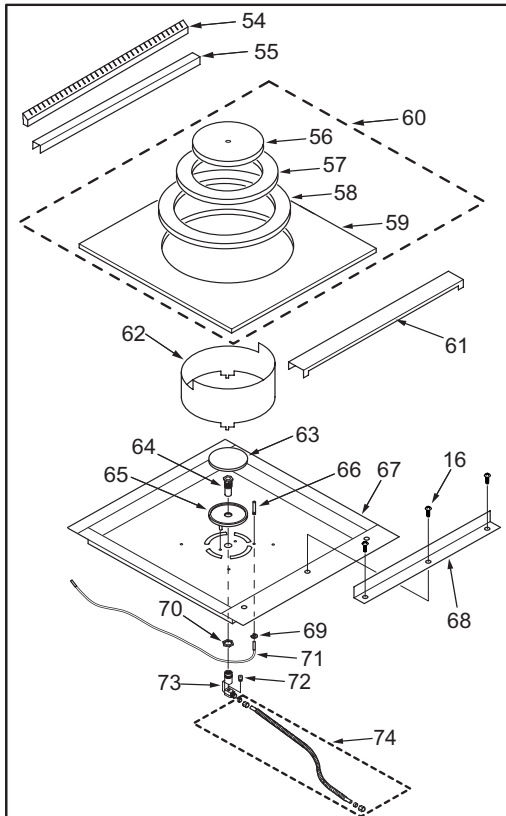
IR Charbroiler



IR Griddle



French Top

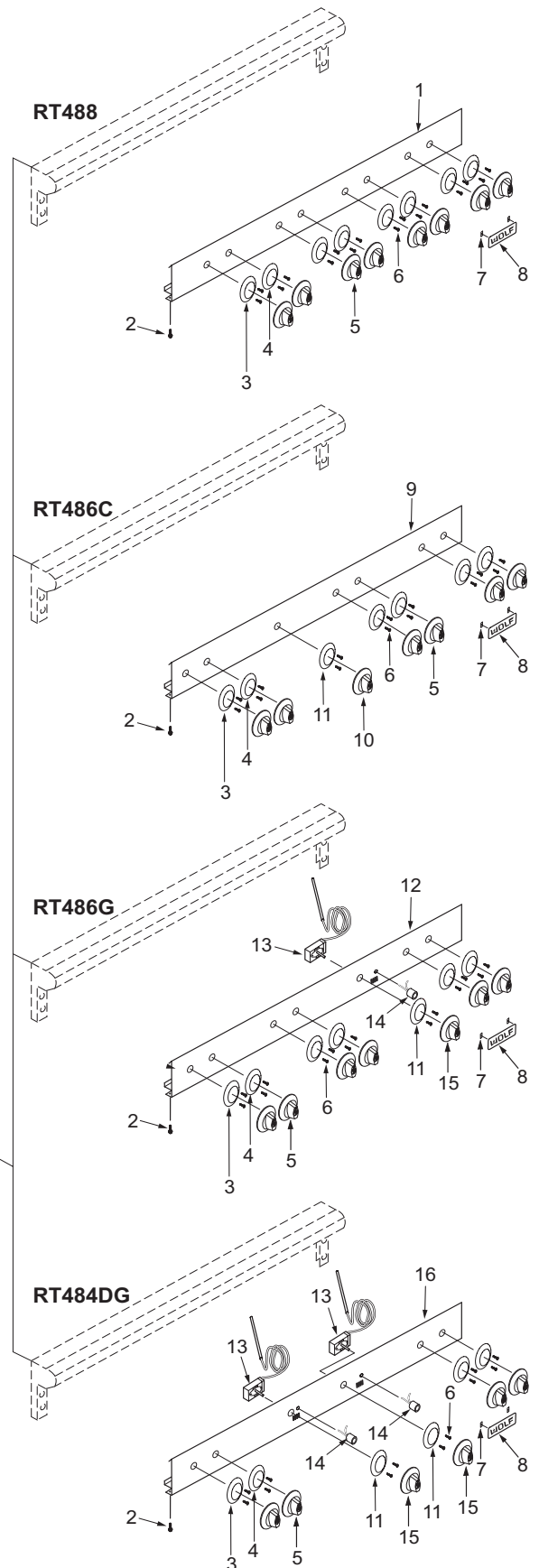
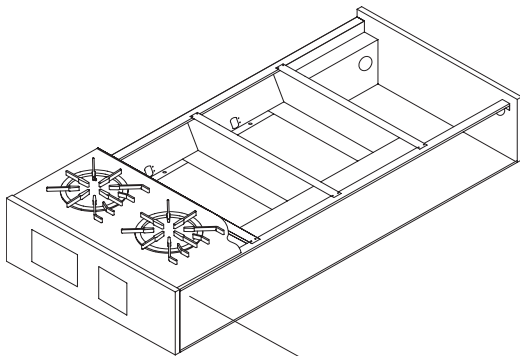


**48" Rangetop Front Panel Parts List (1 of 2)**

| <u>Ref #</u> | <u>Part #</u> | <u>Description</u>                                    |
|--------------|---------------|---|
| 1            | 787409        | Panel, Front SB488 (See SN Breaks)                    |
|              | 806285        | Panel, Front RT488 (See SN Breaks)                    |
| 2            | 730239        | Screw #8-32 x 3/8"                                    |
| 3            | 801346        | Bezel, Front (See SN Breaks)                          |
| 4            | 801347        | Bezel, Rear (See SN Breaks)                           |
| 5            | 720879        | Knob, Control, Red (See SN Breaks)                    |
|              | 801312        | Knob, Surface Burner Valve, Red                       |
|              | 720880        | Knob, Control, Black (See SN Breaks)                  |
|              | 801313        | Knob, Surface Burner Valve, Black                     |
| 6            | 730076        | Screw #6-32 x 1/4"                                    |
| 7            | 730509        | Clip, Tinnerman                                       |
| 8            | 800924        | Wolf Logo   |
| 9            | 787410        | Panel, Front SB486B (See SN Breaks)                   |
|              | 806286        | Panel, Front RT486C (See SN Breaks)                   |
| 10           | 721017        | Knob, Charbroiler/French Top, Red<br>(See S/N Breaks) |
|              | 801306        | Knob, Charbroiler/French Top, Red<br>(See S/N Breaks) |
|              | 721018        | Knob, Char/French Top, Black<br>(See S/N Breaks)      |
|              | 801307        | Knob, Char/French Top, Black<br>(See S/N Breaks)      |
| 11           | 718146        | Bezel, Thermostat                                     |
|              | 801348        | Bezel, W/Tick Mark                                    |
| 12           | 787411        | Panel, Front SB486G (See SN Breaks)                   |
|              | 806287        | Panel, Front RT486G (See SN Breaks)                   |
| 13           | 805787        | Thermostat, Griddle                                   |
| 14           | 720017        | Light, Indicator, Red                                 |
| 15           | 721014        | Knob, Thermostat w/Griddle, Red<br>(See S/N Breaks)   |
|              | 801310        | Knob, Thermostat w/Griddle, Red<br>(See S/N Breaks)   |
|              | 721015        | Knob, Thermostat w/Griddle, Black                     |
|              | 801311        | Knob, Thermostat w/Griddle, Black<br>(See S/N Breaks) |
| 16           | 787414        | Panel, Front SB484DG (See SN Breaks)                  |
|              | 806290        | Panel, Front RT484DG (See SN Breaks)                  |

**48" Rangetop Front Panel View (1 of 2)**

**NOTE: SEE FOLLOWING PAGE FOR ADDITIONAL  
48" RANGETOP FRONT PANEL VIEWS**

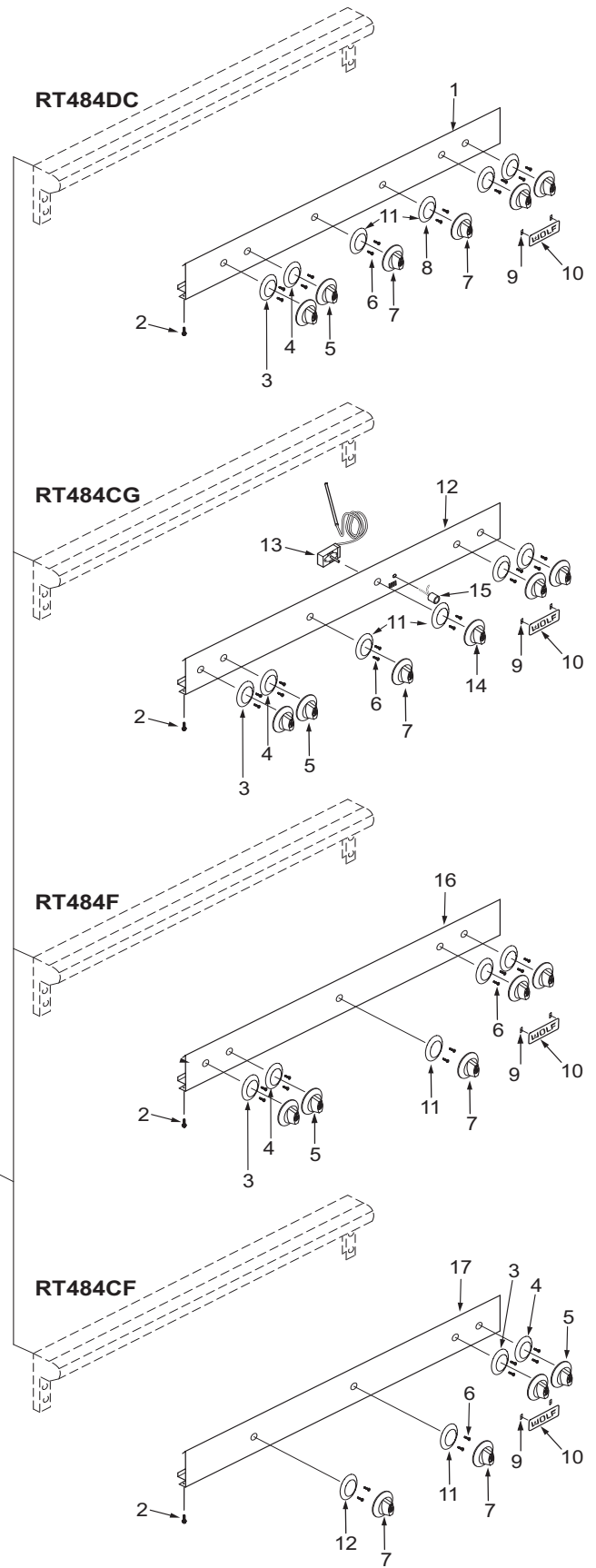
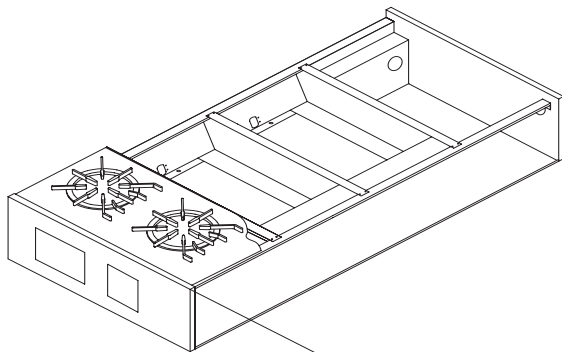


**48" Rangetop Front Panel Parts List (2 of 2)**

| <u>Ref #</u> | <u>Part #</u> | <u>Description</u>                                    |
|--------------|---------------|---|
| 1            | 787413        | Panel, Front SB484B (See SN Breaks)                   |
|              | 806289        | Panel, Front RT484DC (See SN Breaks)                  |
| 2            | 730239        | Screw #8-32 x 3/8"                                    |
| 3            | 801346        | Bezel, Front (See SN Breaks)                          |
| 4            | 801347        | Bezel, Rear (See SN Breaks)                           |
| 5            | 720879        | Knob, Control, Red (See SN Breaks)                    |
|              | 801312        | Knob, Surface Burner Valve, Red                       |
|              | 720880        | Knob, Control, Black (See SN Breaks)                  |
|              | 801313        | Knob, Surface Burner Valve, Black                     |
| 6            | 730076        | Screw #6-32 x 1/4"                                    |
| 7            | 721017        | Knob, Charbroiler/French Top, Red<br>(See S/N Breaks) |
|              | 801306        | Knob, Charbroiler/French Top, Red<br>(See S/N Breaks) |
|              | 721018        | Knob, Char/French Top, Black<br>(See S/N Breaks)      |
|              | 801307        | Knob, Char/French Top, Black<br>(See S/N Breaks)      |
| 8            | 718146        | Bezel, Thermostat                                     |
|              | 801348        | Bezel, W/Tick Mark                                    |
| 9            | 730509        | Clip, Tinnerman                                       |
| 10           | 800924        | Wolf Logo   |
| 11           | 718146        | Bezel, Thermostat                                     |
|              | 801348        | Bezel, W/Tick Mark                                    |
| 12           | 787412        | Panel, Front SB48GB (See SN Breaks)                   |
|              | 806288        | Panel, Front RT484CG (See SN Breaks)                  |
| 13           | 805787        | Thermostat, Griddle                                   |
| 14           | 721014        | Knob, Thermostat w/Griddle, Red<br>(See S/N Breaks)   |
|              | 801310        | Knob, Thermostat w/Griddle, Red<br>(See S/N Breaks)   |
|              | 721015        | Knob, Thermostat w/Griddle, Black                     |
|              | 801311        | Knob, Thermostat w/Griddle, Black<br>(See S/N Breaks) |
| 15           | 720017        | Light, Indicator, Red                                 |
| 16           | 787415        | Panel, Front SB484F (See SN Breaks)                   |
|              | 806291        | Panel, Front RT484F (See SN Breaks)                   |
| 17           | 787416        | Panel, Front SB48FB (See SN Breaks)                   |
|              | 806292        | Panel, Front RT48CF (See SN Breaks)                   |

**48" Rangetop Front Panel View (2 of 2)**

**NOTE: SEE PRECEDING PAGE FOR ADDITIONAL 48" RANGETOP FRONT PANEL VIEWS**



## 48" Rangetop Manifold Parts List (1 of 2)

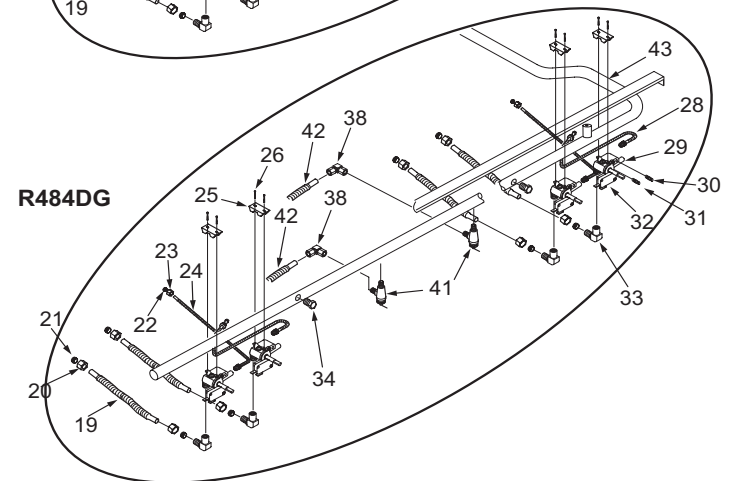
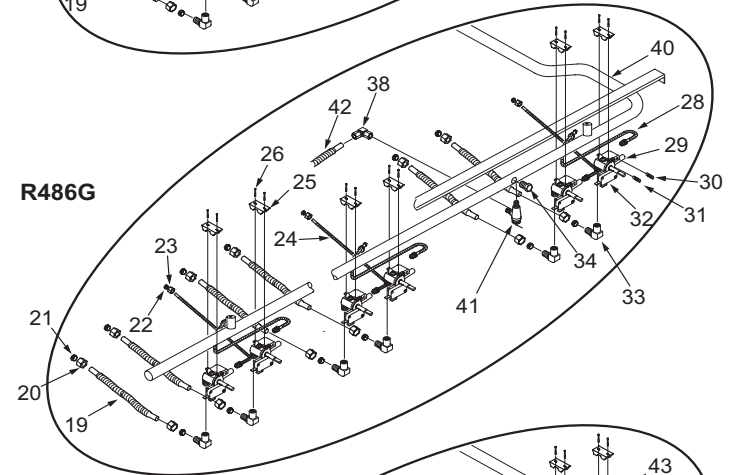
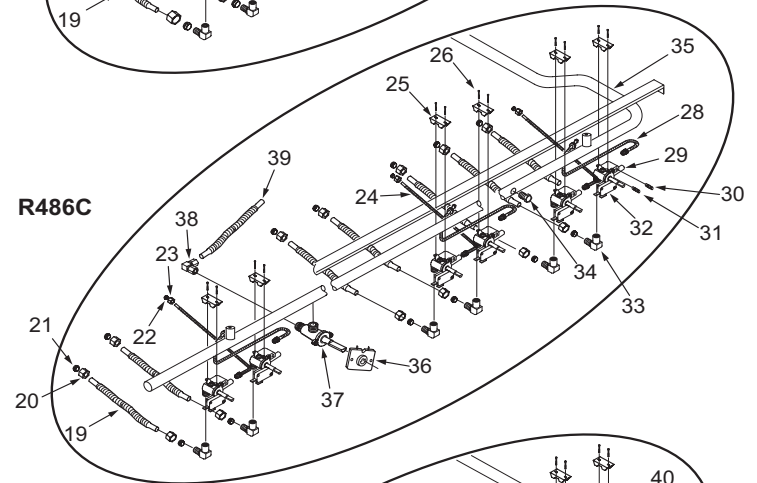
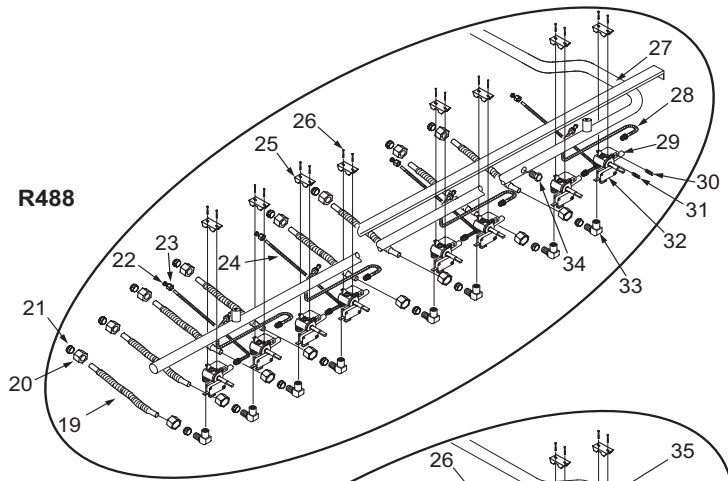
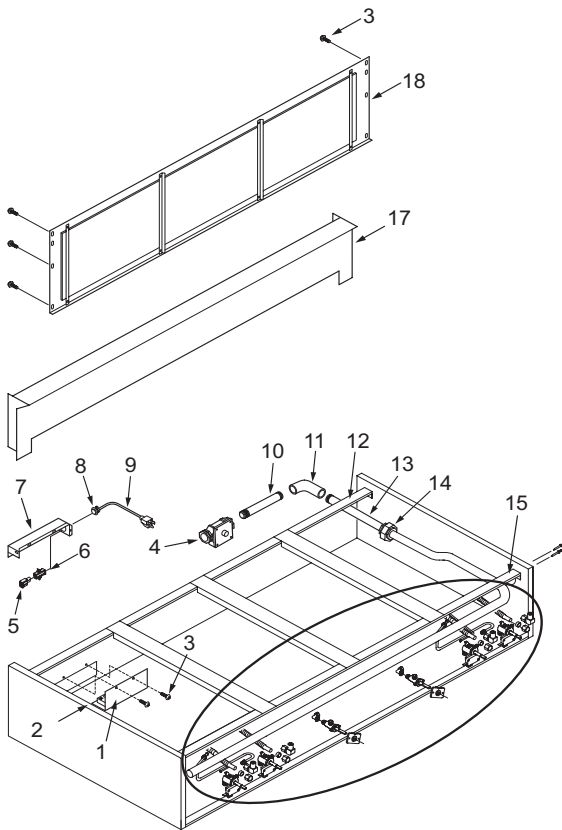
| <u>Ref #</u> | <u>Part #</u> | <u>Description</u>                | <u>Ref #</u> | <u>Part #</u> | <u>Description</u>                 |
|--------------|---------------|-----------------------------------|--------------|---------------|------------------------------------|
| 1            | 768318        | Bracket, Access                   | 24           | 801937        | Flex Tubing Service Pkg 3/16"x27"  |
| 2            | 809418        | Module, Spark +4 Point            | 25           | 720885        | Bracket, Valve Mounting            |
|              | 809420        | Module, Spark 0+1 Tech            | 26           | 722133        | Screw, Hex Head                    |
| 3            | 730228        | Screw #10-24 x 1/2"               | 27           | 804431        | Manifold (RT488)                   |
| 4            | 723350        | Regulator, 3/4" Convertible       | 28           | 801936        | Flex Tubing Service Pkg 3/16"x16"  |
|              | 801358        | Regulator, 1/2" Convertible       | 29           | 809153        | Burner Valve & Switch Assy, Nat    |
| 5            | NLA           |                                   |              | 809154        | Valve, Burner, LP Gas              |
| 6            | NLA           |                                   | 30           | 800892        | Orifice, Bypass Inner, Natural Gas |
| 7            | 769122        | Channel, Electrical               |              | 800055        | Orifice, Bypass Inner, LP Gas      |
| 8            | NLA           |                                   | 31           | 800884        | Orifice, Bypass Outer, Natural Gas |
| 9            | 722632        | Cord, Power                       |              | 800054        | Orifice, Bypass Outer, LP Gas      |
| 10           | 804189        | Nipple, .50 X2.5 LG Black Pipe    | 32           | 807141        | Valve, Switch                      |
| 11           | 801457        | Elbow, 1/2"Npt x 1/2"Npt          | 33           | 719393        | Elbow, Brass 3/8"                  |
| 12           | 787420        | Channel, Rear                     | 34           | 719370        | Plug, Hex Head, 1/8"               |
| 13           | 711302        | Nipple, 1/2" x 5"                 | 35           | 804432        | Manifold (RT486C)                  |
| 14           | 719033        | Union, 1/2" Black                 | 36           | 713810        | Switch, Valve Ignition             |
| 15           | 787419        | Channel, Front                    | 37           | 722413        | Valve, Brass                       |
| 16           | 722270        | Rivet, Pop 3/16" Alum Multigrip   | 38           | 722278        | Elbow, Adapter, Compression        |
| 17           | 800023        | 10-1/2" Riser Package, Rt36       | 39           | 803166        | Flex Tubing Service Pkg 3/16" x 6" |
| 18           | 768337        | Panel, Rear                       | 40           | 804433        | Manifold (RT486G)                  |
| 19           | 803171        | Flex Tubing Service Pkg 5/16"x14" | 41           | 720330        | Valve, Shut Off, Oven              |
| 20           | 807677        | Nut, Compress Brass               | 42           | 722223        | Tubing, Flexible, 3/8 x 24"        |
| 21           | 807667        | Ferrule, Sleeve Brass             | 43           | 804430        | Manifold (RT484DG)                 |
| 22           | 720888        | Fitting, 3/16"                    |              |               |                                    |
| 23           | 807665        | Ferrule, 3/16"                    |              |               |                                    |

### Not Shown

|        |                                      |
|--------|--------------------------------------|
| 800175 | Wiring Harness RT488                 |
| 800176 | Wiring Harness RT486C                |
| 800177 | Wiring Harness RT486G                |
| 800180 | Wiring Harness RT484DG               |
| 714748 | Riser, Insulation, 1/8" x x17" x 44" |
| 803877 | Riser, Back Panel Assy               |
| 803881 | Riser, Front Panel Assy              |
| 800002 | Regular Trim Strip Package, RT48     |
| 800003 | Island Trim Strip, Lh & Rh, RT48     |
| 763049 | Strip Filler, Left Hand              |
| 763050 | Strip Filler, Right Hand             |
| 762214 | Panel, Back                          |
| 762212 | Strip, Back Filler                   |

**48" Rangetop Manifold View (1 of 2)**

**NOTE: SEE FOLLOWING PAGE FOR  
ADDITIONAL 48" RANGETOP  
MANIFOLD VIEWS**





## 48" Rangetop Manifold Parts List (2 of 2)

| Ref # | Part # | Description                       | Ref # | Part # | Description                        |
|-------|--------|-----------------------------------|-------|--------|------------------------------------|
| 1     | 768318 | Bracket, Access                   | 25    | 720885 | Bracket, Valve Mounting            |
| 2     | 809418 | Module, Spark +4 Point            | 26    | 722133 | Screw, Hex Head                    |
|       | 809420 | Module, Spark 0+1 Tech            | 27    | 719393 | Elbow, Brass 3/8"                  |
| 3     | 730228 | Screw #10-24 x 1/2"               | 28    | 803166 | Flex Tubing Service Pkg 3/8" x 6"  |
| 4     | 723350 | Regulator, 3/4" Convertible       | 29    | 719370 | Plug, Hex Head, 1/8"               |
|       | 801358 | Regulator, 1/2" Convertible       | 30    | 804435 | Manifold (RT484DC, RT484F)         |
| 5     | NLA    |                                   | 31    | 801936 | Flex Tubing Service Pkg 3/16"x16"  |
| 6     | NLA    |                                   | 32    | 809153 | Burner Valve & Switch Assy, Nat    |
| 7     | 769122 | Channel, Electrical               |       | 809154 | Valve, Burner, LP Gas              |
| 8     | NLA    |                                   | 33    | 800892 | Orifice, Bypass Inner, Natural Gas |
| 9     | 722632 | Cord, Power                       |       | 800055 | Orifice, Bypass Inner, LP Gas      |
| 10    | 804189 | Nipple, .50 X2.5 LG Black Pipe    | 34    | 800884 | Orifice, Bypass Outer, Natural Gas |
| 11    | 801457 | Elbow, 1/2"Npt x 1/2"Npt          |       | 800054 | Orifice, Bypass Outer, LP Gas      |
| 12    | 787420 | Channel, Rear                     | 35    | 807141 | Valve, Switch                      |
| 13    | 711302 | Nipple, 1/2" x 5"                 | 36    | 713810 | Switch, Valve Ignition             |
| 14    | 719033 | Union, 1/2" Black                 | 37    | 722413 | Valve, Brass                       |
| 15    | 787419 | Channel, Front                    | 38    | 722223 | Tubing, Flexible, 3/8 x 24"        |
| 16    | 722270 | Rivet, Pop 3/16" Alum Multigrip   | 39    | 722278 | Elbow, Adapter, Compression        |
| 17    | 800023 | 10-1/2" Riser Package, Rt36       | 40    | 804434 | Manifold (RT484CG)                 |
| 18    | 768337 | Panel, Rear                       | 41    | 720330 | Valve, Shut Off, Oven              |
| 19    | 803171 | Flex Tubing Service Pkg 5/16"x14" | 42    | 803167 | Flex Tubing Service Pkg 3/8"x12"   |
| 20    | 807677 | Nut, Compress Brass               | 43    | 804437 | Manifold (RT482CF)                 |
| 21    | 807667 | Ferrule, Sleeve Brass             |       |        |                                    |
| 22    | 720888 | Fitting, 3/16"                    |       |        |                                    |
| 23    | 807665 | Ferrule, 3/16"                    |       |        |                                    |
| 24    | 801937 | Flex Tubing Service Pkg 3/16"x27" |       |        |                                    |

### Not Shown

|        |                                     |
|--------|-------------------------------------|
| 800179 | Wiring Harness RT484DC              |
| 800178 | Wiring Harness RT484CG              |
| 800181 | Wiring Harness RT484F               |
| 800182 | Wiring Harness RT482CF              |
| 714748 | Riser, Insulation, 1/8" x 17" x 44" |
| 803877 | Riser, Back Panel Assy              |
| 803881 | Riser, Front Panel Assy             |
| 800002 | Regular Trim Strip Package, RT48    |
| 800003 | Island Trim Strip, Lh & Rh, RT48    |
| 763049 | Strip Filler, Left Hand             |
| 763050 | Strip Filler, Right Hand            |
| 762214 | Panel, Back                         |
| 762212 | Strip, Back Filler                  |

**48" Rangetop Manifold View (2 of 2)**

**NOTE: SEE PRECEDING PAGE FOR ADDITIONAL 48" RANGETOP MANIFOLD VIEWS**

