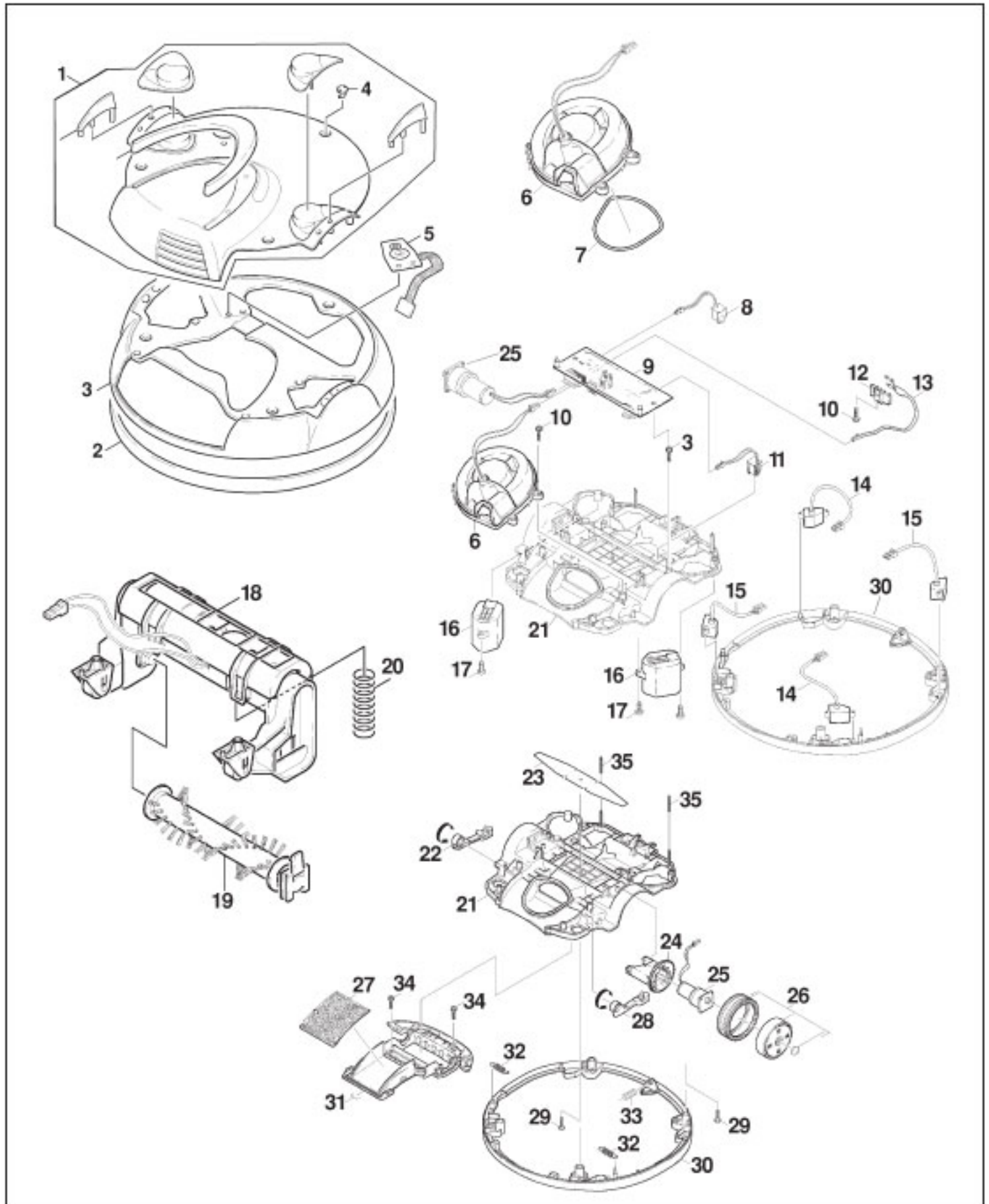


KARCHER Original

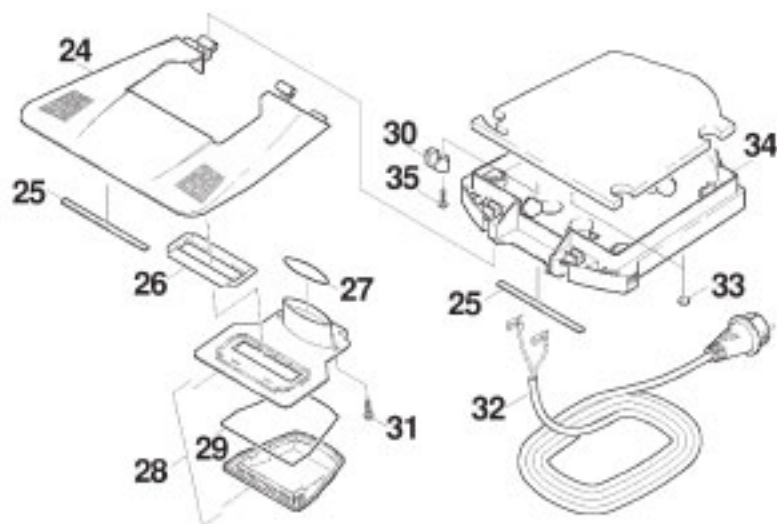
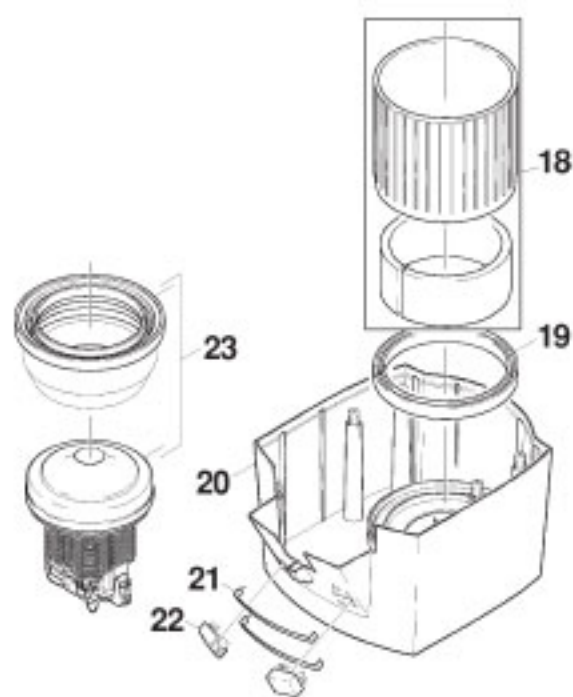
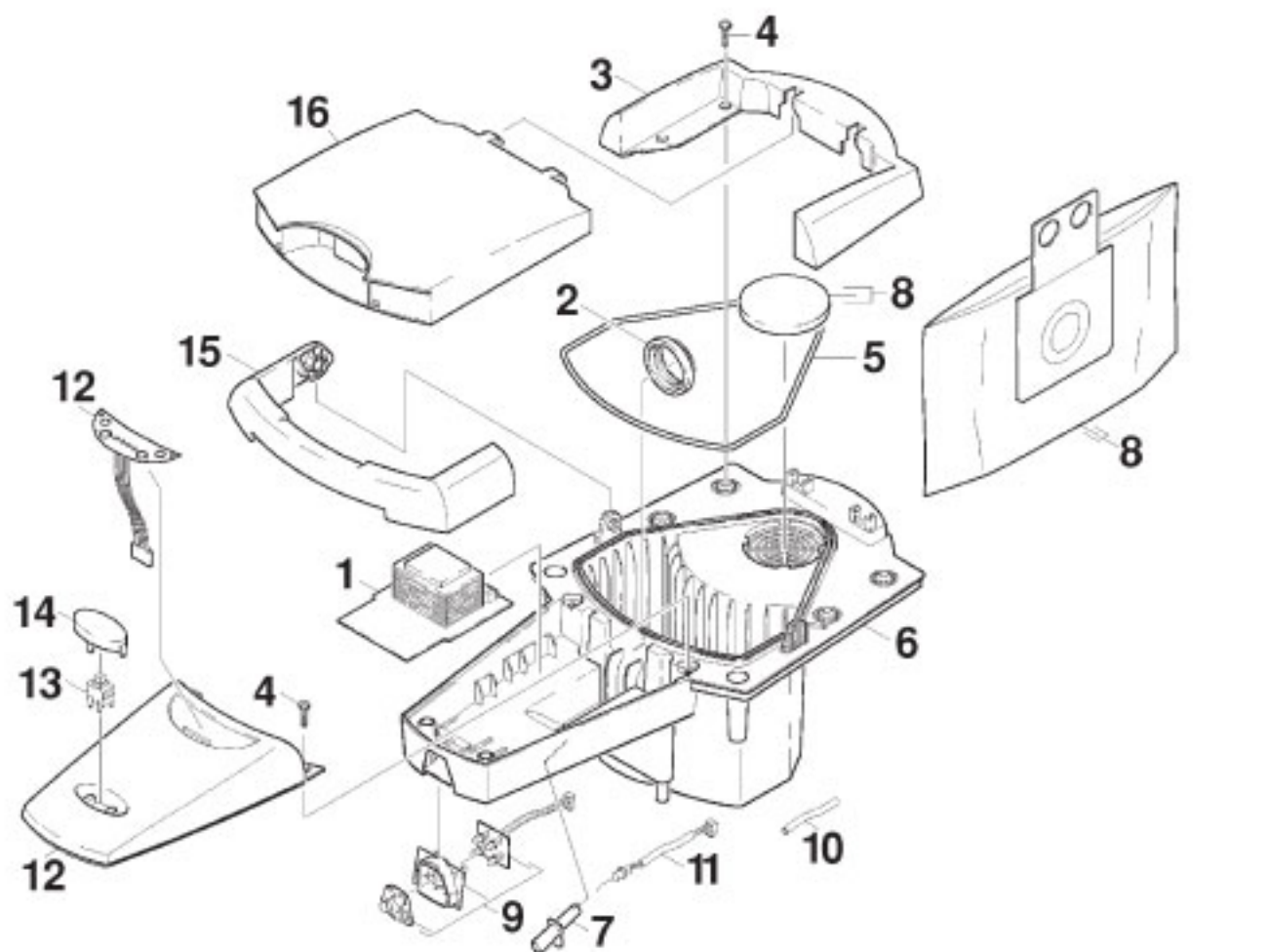
ROBOCLEANER RC3000



Original

KARCHER

ROBOCLEANER RC3000



KARCHER Original

ROBOCLEANER RC3000

| <u>KEY</u> | <u>PART NO.</u> | <u>DESCRIPTION</u> |
|------------|-----------------|-----------------------------|
| 1 | KA-40637500 | Cover Assembly (Incl. 4) |
| 2 | KA-50608760 | Bumper |
| 3 | KA-40605400 | Housing Assembly (Incl. 5) |
| 4 | KA-54093230 | Holder, Top Cover (Plastic) |
| 5 | KA-66342160 | Button, On/Off Switch |
| 6 | KA-46000180 | Motor Assembly |
| 7 | KA-53635850 | Motor Gasket |
| 8 | KA-46990120 | Dust Sensor |
| 9 | KA-3600 | Electronic Control Board |
| 10 | KA-73030920 | Screw |
| 11 | KA-46690130 | Dust Sensor |
| 12 | KA-56722310 | Bracket |
| 13 | KA-41810010 | Loading Contact |
| 14 | KA-46690140 | Optical Drop Sensor |
| 15 | KA-46690150 | Optical Drop Sensor |
| 16 | KA-3610 | Battery 2 Pk |
| 17 | KA-73060560 | Screw |
| 18 | KA-47623170 | Brush Holder |
| 19 | KA-2000 | Brushroll Complete |
| 20 | KA-63301750 | Pressure Spring |
| 21 | KA-28825950 | Base |
| 22 | KA-50322920 | Dust Cup Locking Arm |
| 23 | KA-53370390 | Protective Plate |
| 24 | KA-50608780 | Motor Housing, Drive Wheel |
| 25 | KA-66127240 | Motor, Drive Wheel |
| 26 | KA-45150930 | Wheel Assembly |
| 27 | KA-1800 | Filter Screen |
| 28 | KA-50322910 | Dust Cup Locking Arm |
| 29 | KA-73030920 | Screw |
| 30 | KA-50608740 | Support Ring, Base |
| 31 | KA-40637770 | Dust Cup With Wheels |
| 32 | KA-63301940 | Extension Spring |
| 33 | KA-63301740 | Pressure Spring |
| 34 | KA-73060510 | Screw |
| 35 | KA-53324980 | Mounting Tab |

KARCHER Original

ROBOCLEANER RC3000

| KEY | PART NO. | DESCRIPTION |
|-----|-------------|---------------------------------|
| 1 | KA-66826970 | Circuit Board |
| 2 | KA-53635930 | Joint Ring |
| 3 | KA-50319230 | Outer Cap Assembly |
| 4 | KA-73031290 | Screw |
| 5 | KA-62732240 | Bag Housing Gasket |
| 6 | KA-50326150 | Main Body, Docking Station |
| 7 | KA-50319250 | Receptacle For LED |
| 8 | KA-1400 | Paper Bag 5 pk / 1 Filter |
| 9 | KA-40432770 | Infrared Lens |
| 10 | KA-63909080 | Hose |
| 11 | KA-66514990 | LED |
| 12 | KA-40637510 | Front Cover |
| 13 | KA-3400 | Switch |
| 14 | KA-53240520 | Switch Button |
| 15 | KA-53216460 | Handle, Docking Station |
| 16 | KA-40637380 | Lid, Docking Station |
| 17 | KA-73031290 | Screw |
| 18 | KA-50610330 | Motor Housing |
| 19 | KA-62732230 | Motor Gasket |
| 20 | KA-50608810 | Main Housing, Docking Station |
| 21 | KA-51810780 | Contact Strip |
| 22 | KA-50444620 | Mounting Bracket, Contact Strip |
| 23 | KA-46721590 | Suction Motor |
| 24 | KA-51920570 | Bottom Plate, Docking Station |
| 25 | KA-62732260 | Gasket, Bottom Plate |
| 26 | KA-53652400 | Seal, Suction Path |
| 27 | KA-63622160 | O-Ring |
| 28 | KA-40310540 | Suction Path (Incl. 27, 29) |
| 29 | KA-62732250 | Gasket, Suction Path |
| 30 | KA-50345050 | Mounting Bracket |
| 31 | KA-73031290 | Screw |
| 32 | KA-66489180 | Power Cord |
| 33 | KA-62732270 | Floor Pad |
| 34 | KA-51920950 | Lower Housing, Docking Station |
| 35 | KA-73030850 | Screw |