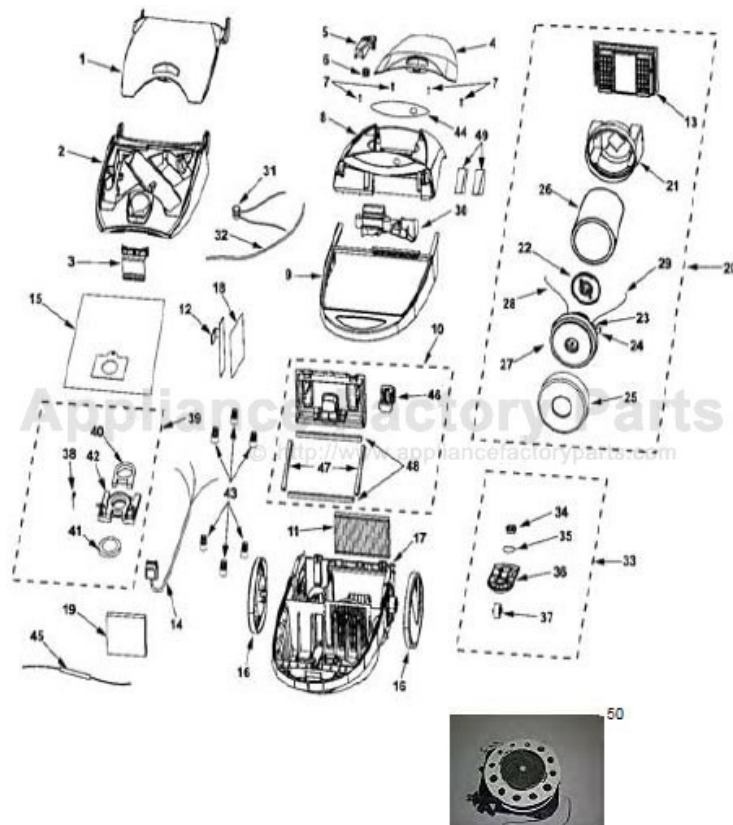


This Owner's Manual is provided and hosted by [Appliance Factory Parts](#).



Kenmore 116.25914505 Owner's Manual

[Shop genuine replacement parts for Kenmore
116.25914505](#)



[Find Your Kenmore Vacuum Cleaner Parts - Select From 746 Models](#)

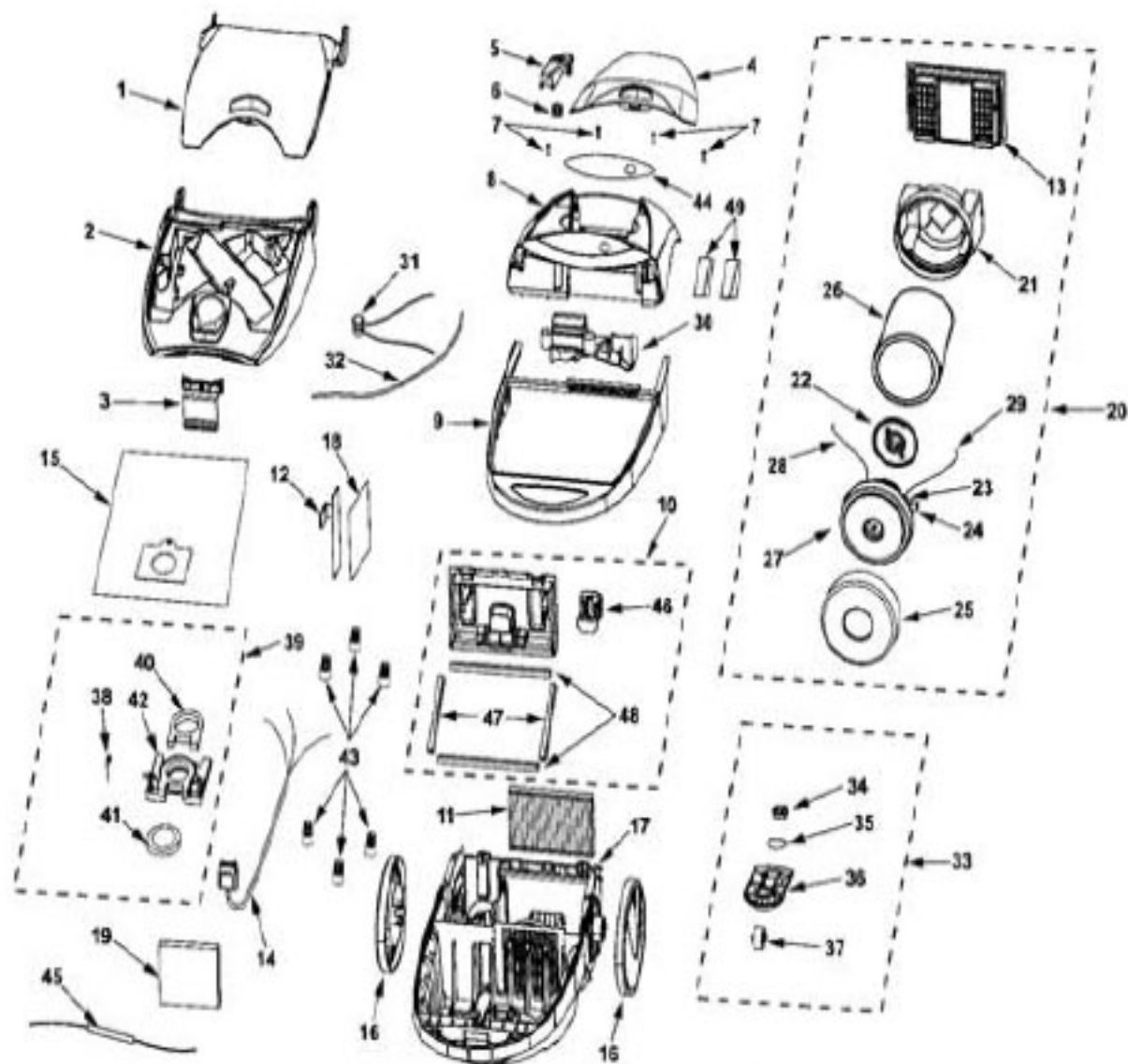
----- Manual continues below part list -----

Available Replacement Parts for Kenmore 116.25914505

86883	FILTER VA
8192535	AGITATOR VA
4370325	ADAPTER VA
KC63RBZTZV07	Combination brush.
KC01DBZTZV07	HOOD LATCH
4370614	BRUSH-ASSY VA
8192011	BELT-DRIVE VA
KE-4370560	Hose

KENMORE Original & Replacement

CANISTER VACUUM Model 116.25914505



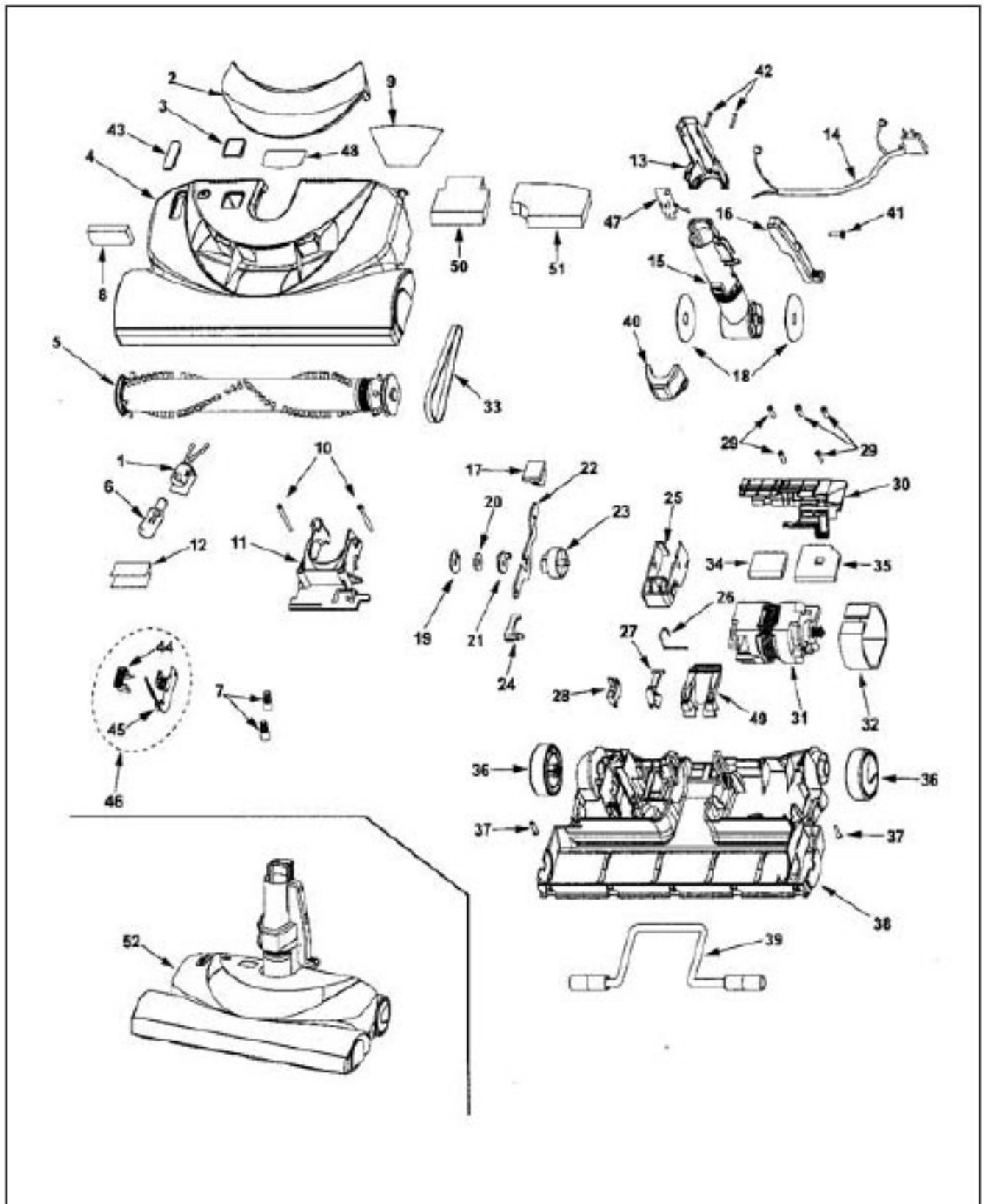
Original & Replacement **KENMORE** CANISTER VACUUM Model 116.25914505

KEY	PART NO.	DESCRIPTION
1	KE-KC74PBZTZVU	Tool storage cover
2	KE-KC60KCPSZMUB	Dust cover
3	KE-KC01DBZTZV07	Latch
4	KE-KC74PCPSZVUU	Tool storage cover
5	KE-KC46NBZTZV06	Cord rewind button
6	KE-KS744258	Spring, cord rewind
7	KE-4368563	Screw, motor, case mounting
8	KE-KC48HCPSZM0B	Canopy
9	KE-KC31ABZTZV06	Furniture guard
10	KE-KC41KCPTZV06	Filter cover assembly
11	KER-1800	Exhaust filter (hepa) sears no. 20-86889
12	KE-KC89VBZP2000	P.c.b. assembly
13	KE-KC32FCPSZV07	Filter supporter
14	KE-KC90EBZTZV06	Receptacle assembly, 3-wire
15	KER-14551A	Dust bag (hepa) sears no. 20-50557
16	KE-KC99CBZNV07	Wheel
17	KE-KC03ABZT5V07	Lower body
18	KE-KC41FBZPZ000	Cooling guide
19	KE-8175084	Filter, motor safety sears no. 20-86883
20	KE-KC90FCVSV07	Motor assembly
21	KE-KC10GCPSZ000	Motor enclosure
22	KE-KC03FBZTZ000	Motor support rubber, rear
23	NLA	Screw
24	KE-4370655	Brush, motor (2)
25	KE-KC02FCUMZ000	Motor support rubber, front
26	KE-4370683	Suppressor, noise
27	KE-KC92FCJNZ000	Fan motor unit
28	KE-KC38GATMZ000	Lead wire, black
29	KE-KC43GAUYZ000	Lead wire assembly
30	KE-KC02ABZTZV06	Upper body
31	KE-4370741	Indicator, light switch (includes illus. 9)
32	KE-4370677	Adapter, tube vac switch
33	KE-KC95CBZTZV06	Caster unit
34	KE-KC12CBZTZ000	Counter weight
35	KE-KC41ABZTZV00	Rubber cushion
36	KE-KC34CBZTZV06	Caster supporter
37	KE-4370691	Caster, wheel
38	KE-KS706024	Spring, bag mount
39	KE-KC11KAKTR01	Bag supporter assembly
40	KE-4370689	Gasket, bag mount.
41	KE-4370688	Packing , inlet
42	KE-KC10KAKTR01	Bag mount
43	SS-3270	
44	KE-KC21TCPSZ000	Ornamental plate
45	KE-4370978	Lead wire assembly
46	KE-KC15KCPSZV07	Latch
47	KE-KC19ACPSZ000	Body packing
48	KE-KC19ACPTZ000	Body packing
49	KE-KC06LCPSZ000	Rear packing
50	KE-8195114	Cord Reel

NLA = No Longer Available

KENMORE Original & Replacement

CANISTER VACUUM Model 116.25914505



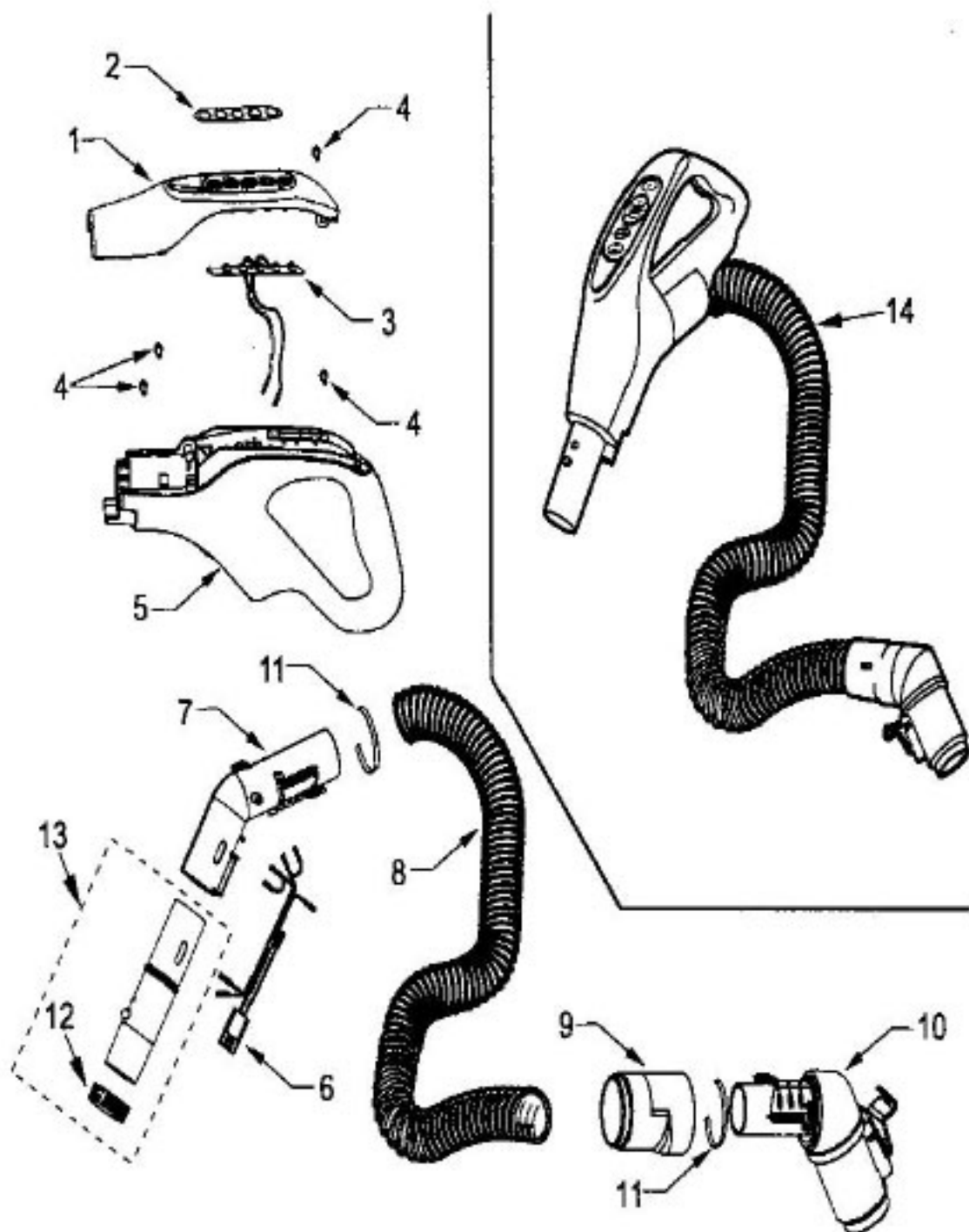
Original & Replacement **KENMORE** CANISTER VACUUM Model 116.25914505

KEY	PART NO.	DESCRIPTION
1	KE-4370721	Socket, bulb
2	KE-KC21HBZT000	Light lens
3	KE-4369687	Window, cover (height adjustment)
4	KE-KC99RBZRZMUB	Nozzle housing
5	KE-8192535	Agitator unit
6	FA-3515	Light bulb (sears no. 20-5240)
7	SS-3270	Connector, wire
8	KE-4370713	Filter, intake/ exhaust (2)
9	KE-KC84HBZT000	Reflector, nozzle
10	KE-KS881550	Screw
11	KE-KC25QAKTZV07	Swivel cap
12	KE-KC22HBZT000	Window reflector
13	KE-4370717	Cover, rear
14	KE-KC67VAXEZV06	Lead wire "a"
15	KE-KC92PCREZ000	Swivel
16	KE-8195108	Pedal, quick release
17	KE-4370577	Pad, foot pedal
18	KE-KS742019	Swivel seat
19	KE-KS722909	Washer, thrust
20	KE-KS725635	Washer
21	KE-KS722955	Catch indexing
22	KE-4370720	Indicator, level
23	KE-KS747291	Cam, indicator
24	KE-KS742018	Ratchet catch
25	KE-KC83MAKSZV06	Indicator block assembly
26	KE-725775	Spring, assist
27	KE-4370726	Lifter
28	KE-KC76FAXEZ000	Overload protector
29	KE-KS881297	Screw
30	KE-KC26FCPSZ000	Motor cap
31	KE-KC90FCBJZ000	Motor
32	KE-KS747156	Motor gasket
33	KER-1080	Belt sears no.20-5218
34	KE-KC75ACPSZ000	Packing motor (front)
35	KE-KC13BCPSZ000	Packing motor (rear)
36	KE-KC99CBZTV07	Wheel
37	KE-4368563	Screw, motor, case mounting
38	KE-KC03RBZT2V07	Lower plate
39	KE-KS744029	Front Wheel assembly
40	KE-4370967	Front cover
41	KE-4370280	Screw, motor case mounting
42	KE-4368551	Screw, 8-24 x 1 (2)
43	KE-4369981	Window, dirt sensor
44	KE-KC23KBZTZU00	P.c.b. supporter
45	KE-KC87GBZR1000	P.c.b dirt sensor
46	KE-KC87GBZR2000	Dirt sensor unit
47	KE-4369985	Pcb "b" unit
48	KE-KC84HCPZ000	Reflector
49	KE-KC47AGJ3R01	Handle release pedal
50	KE-KC39ACPSZ000	Body packing right nozzle
51	KE-KC40ACPSZ000	Body packing left nozzle
52	KE-KC50XBZRZU01	Powermate assembly

NLA = No Longer Available

KENMORE Original & Replacement

CANISTER VACUUM Model 116.25914505

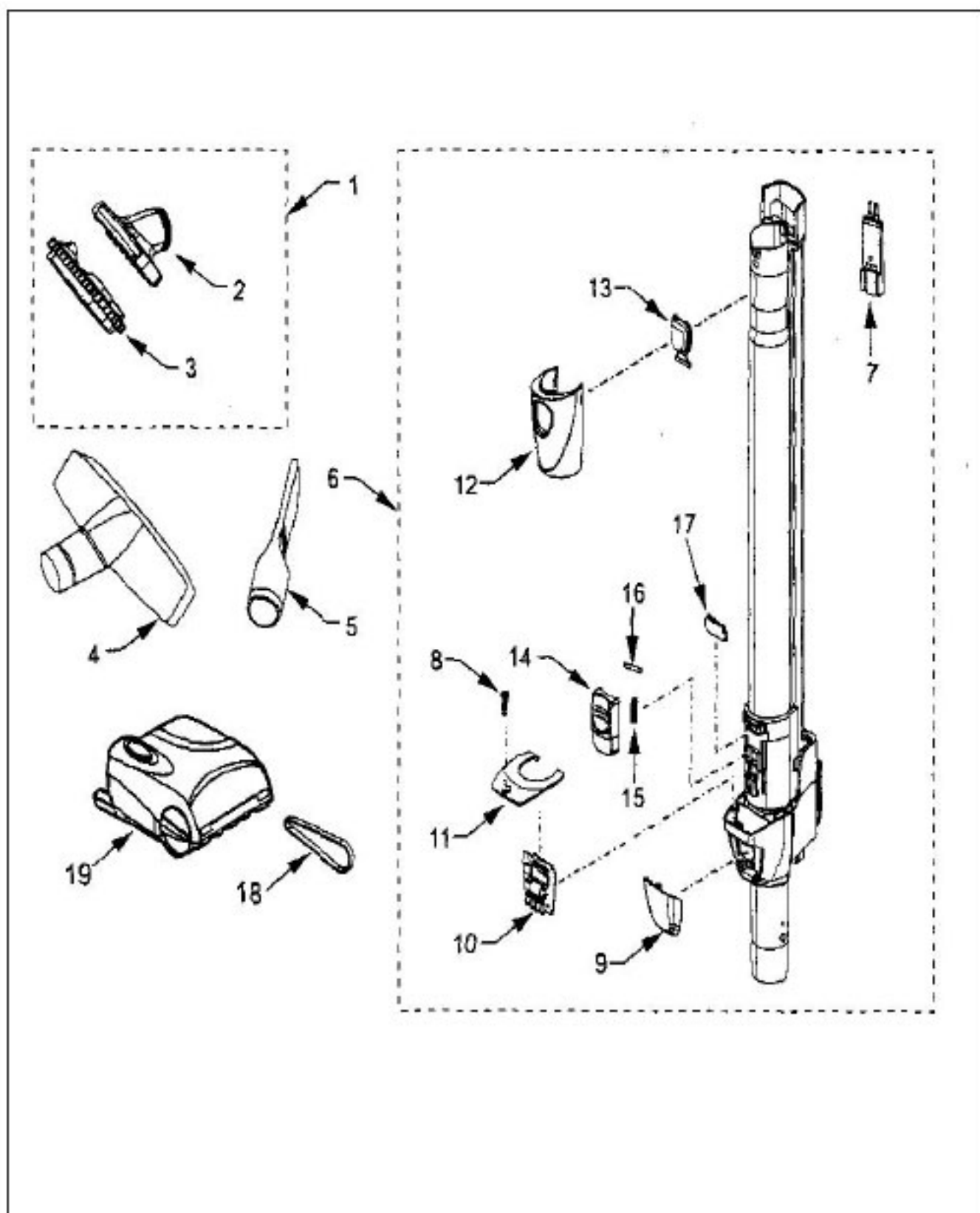


Original & Replacement **KENMORE**
CANISTER VACUUM Model 116.25914505

KEY	PART NO.	DESCRIPTION
1	KE-KC68GBZPV07	Switch case
2	KE-KC31TBZPV000	Electronic label
3	KE-KC87GBZNV000	P.c.b. assembly
4	KE-4369085	Screw, knocking cam
5	KE-KC93BBZTV06	Handle assembly
6	KE-KC37GBZPV06	Wire harness
7	KE-KC30PATM1V06	Curved wand
8	KE-4370560	Hose, 3-wire
9	KE-4370325	Adapter, hose connection
10	KE-KC92PBZTV06	Connection pipe
11	KE-KC04RATMZ000	Hose packing
12	KE-4370593	Control, suction
13	KE-KC56PCPSZV06	Stub tube assembly
14	KE-KC94PCPSZV07	Hose assembly

KENMORE Original & Replacement

CANISTER VACUUM Model 116.25914505



Original & Replacement **KENMORE**
CANISTER VACUUM Model 116.25914505

KEY	PART NO.	DESCRIPTION
1	KE-KC63RBZTZV07	Combination brush
2	KE-KC62RBZTZV07	Upholstery nozzle
3	KE-KC94QBZTZV07	Dusting brush
4	KE-4370614	Brush, floor
5	KE-8175100	Tool, crevice
6	KE-KC99PCPSZV06	Extension wand
7	KE-8191782	Cover, fuse wand
8	KE-4370790	Screw, handle cap mounting
9	KE-KC21HBZPZ000	Window (led)
10	KE-KC47VBZPZ000	P.c.b. assembly - light
11	KE-KC38HBZPZV06	Cover (led)
12	KE-KC70QCPMZV06	Quick release upper
13	KE-KC13DCPMZV06	Quick release button
14	KE-KC57HASMZV07	Sliding knob
15	KE-KC65DASMZ000	Spring
16	KE-KC27UASMZ000	Sliding pin
17	KE-KC06QASMZV06	Pipe cover
18	KE-8192011	Belt, pet powermate (r)
19	KE-52040	Power-mate jr (complete assembly)