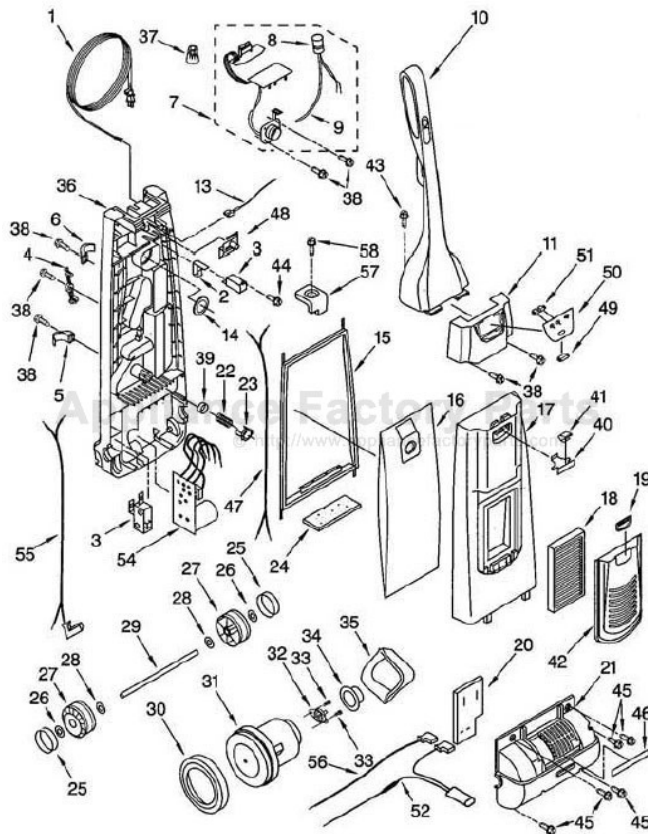


This Owner's Manual is provided and hosted by [Appliance Factory Parts](#).



Kenmore 116.31913100 Owner's Manual

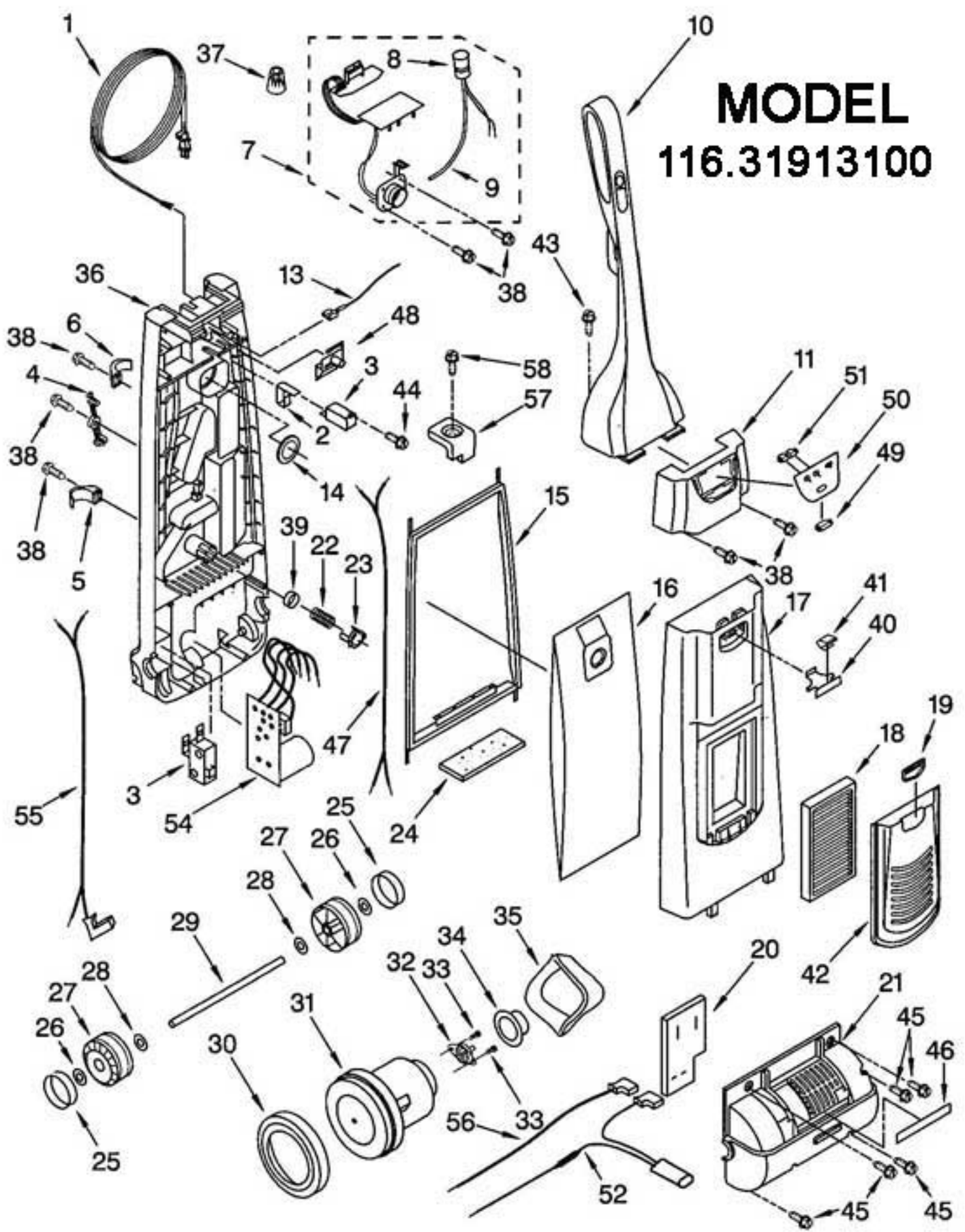
[Shop genuine replacement parts for Kenmore
116.31913100](#)



[Find Your Kenmore Vacuum Cleaner Parts - Select From 745 Models](#)

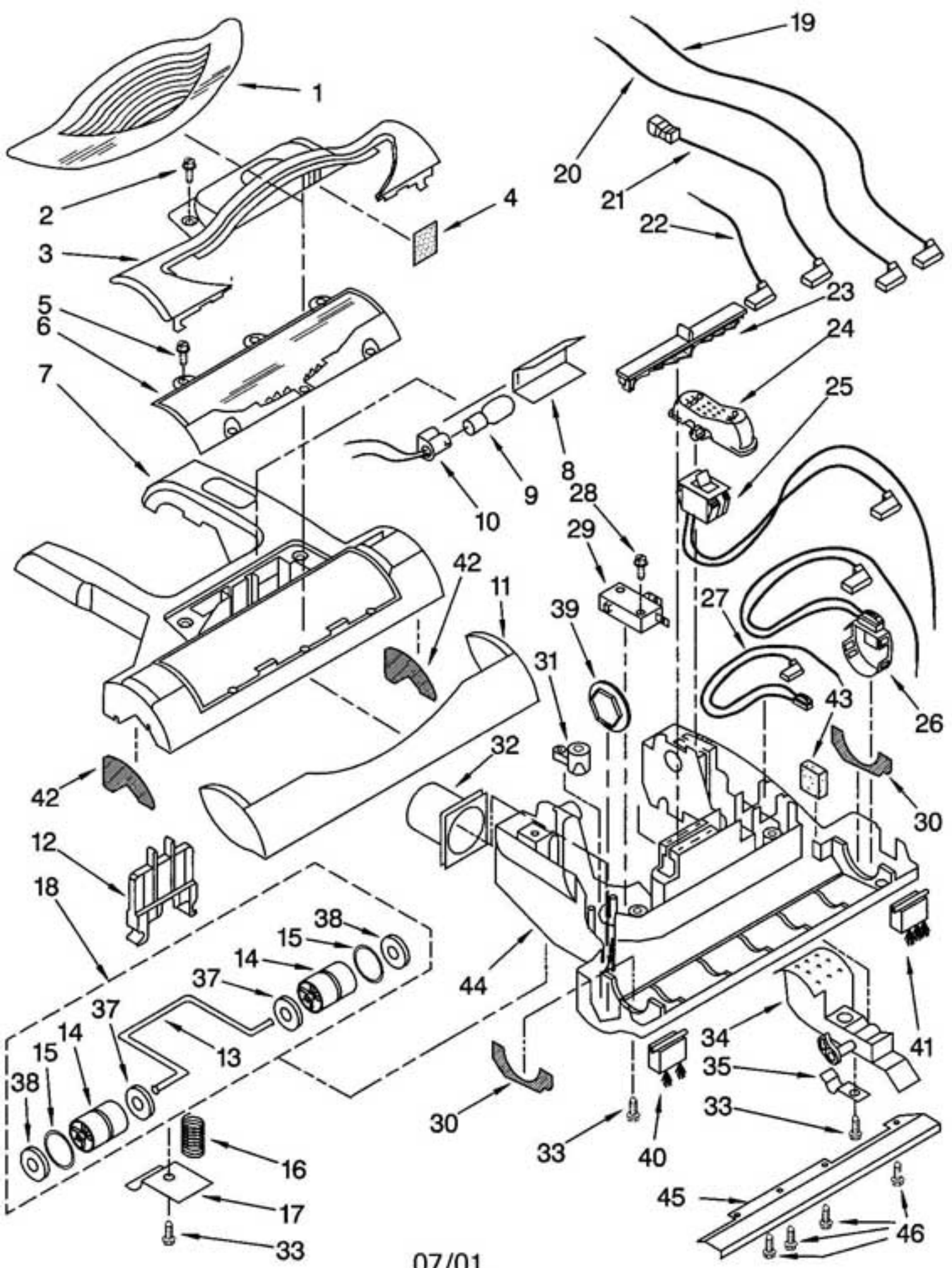
----- Manual continues below -----

MODEL 116.31913100



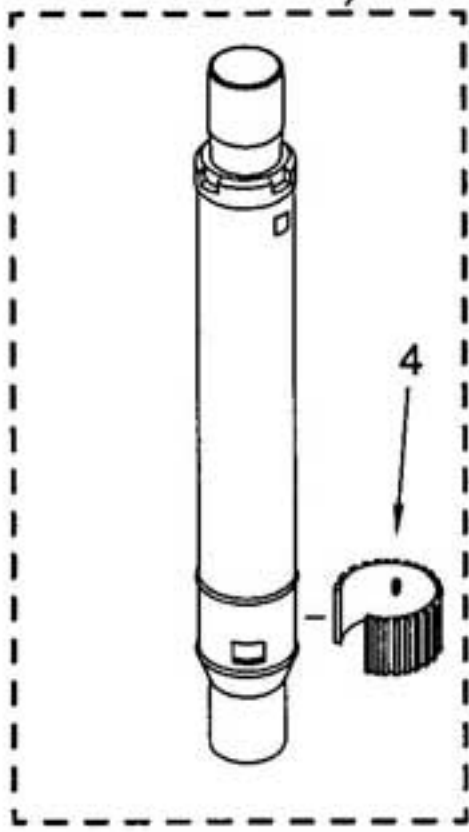
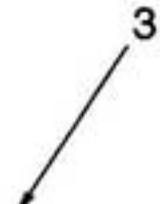
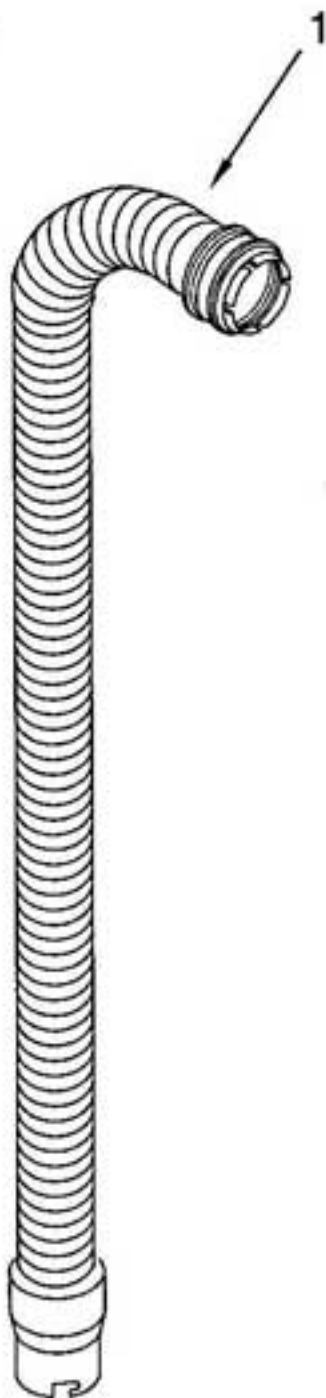
| | | |
|----|------------------|---|
| 1 | KE-4370467 | CORD, POWER |
| 2 | KE-4370396 | LEVER, ON-OFF SWITCH |
| 3 | KE-4368653 | SWITCH, ON-OFF |
| 4 | KE-4370400 | HOLDER |
| 5 | KE-4370399 | HOLDER, HOSE |
| 6 | KE-4370392 | HOLDER, WAND |
| 7 | KE-4370573 | PCB ASSEMBLY |
| 8 | KE-4370574 | INDICATOR, LIGHT SWITCH (INCLUDES ILLUS. 9) |
| 9 | KE-4151985 | TUBE, VAC SWITCH |
| 10 | KE-8174923 | HANDLE ASSEMBLY (COMPLETE) |
| 11 | KE-8174925 | COVER, SWITCH |
| 13 | KE-4370427 | WIRE, BLACK LEAD |
| 14 | KE-4370575 | SUCTION INLET PACKING |
| 15 | KE-4370428 | PACKING, DUST CONTAINER |
| 16 | KER-1468A | DUST BAG (SEARS NO. 20-50690) |
| 17 | KE-8174921 | COVER, DUST |
| 18 | KER-1800 | FILTER (SEARS NO. 20-86889) |
| 19 | KE-4370416 | LATCH, FILTER COVER |
| 20 | KE-4370405 | FILTER, EXHAUST |
| 21 | KE-8174920 | CASE, MOTOR |
| 22 | KE-8191765 | SPRING, PROTECTOR |
| 23 | KE-4370408 | COVER, PROTECTOR |
| 24 | KER-1820 | FILTER (SEARS NO. 20-86884) |
| 25 | KE-4370240 | CUSHION, RUBBER |
| 26 | KE-4369564 | STOPPER, WHEEL |
| 27 | KE-4370177 | WHEEL |
| 28 | KE-4369562 | WASHER |
| 29 | KE-4369561 | SHAFT, WHEEL |
| 30 | KE-4370265 | SUPPORT, RUBBER MOTOR (FRONT) |
| 31 | KE-8174917 | MOTOR, FAN |
| 32 | KE-8174918 | FLANGE, MOTOR |
| 33 | KE-4370284 | SCREW, FLANGE |
| 34 | KE-4370404 | SUPPORT, RUBBER MOTOR (REAR) |
| 35 | KE-8174919 | SUPPRESSOR, NOISE |
| 36 | KE-8174915 | COMPARTMENT, DUST |
| 37 | KE-4368522 | NUT, WIRE (4) |
| 38 | KE-4368563 | SCREW, MOUNTING |
| 39 | KE-4370429 | PROTECTOR |
| 40 | KE-4370403 | LATCH, DUST COVER |
| 41 | KE-4369097 | SPRING, LATCH |
| 42 | KE-8175063 | COVER, FILTER |
| 43 | KE-4370420 | SCREW, HANDLE |
| 44 | KE-4370280 | SCREW, SWITCH MOUNTING |
| 45 | KE-4368563 | SCREW, MOTOR CASE MOUNTING |
| 46 | KE-4370430 | PACKING, MOTOR CASE (ADHESIVE BACK) |
| 47 | KE-4370465 | WIRE, CORD |
| 48 | KE-4370569 | KNOB, SENSOR |

| | | |
|----|------------|------------------------|
| 49 | KE-4370570 | INDICATOR, LENS |
| 50 | KE-8174916 | PLATE, ORNAMENTAL |
| 51 | KE-4370572 | L E D LENS |
| 52 | KE-8174934 | THERMAL PROTECTOR UNIT |
| 54 | KE-8174935 | PCB ASSEMBLY |
| 55 | KE-8174936 | WIRE, LEAD |
| 56 | KE-8174933 | WIRE LEAD |
| 57 | KE-8174943 | LOCKING CAM |
| 58 | KE-8174944 | SCREW |

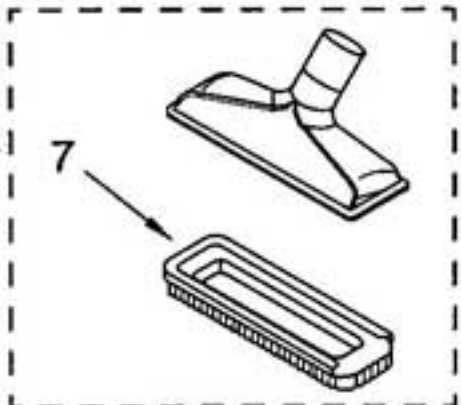
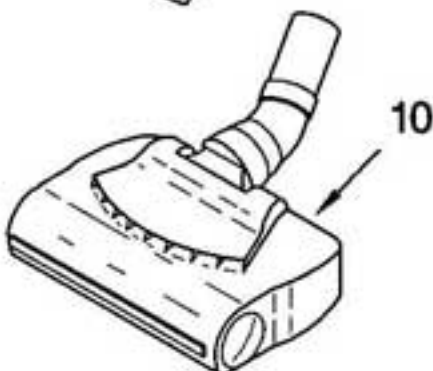


07/01

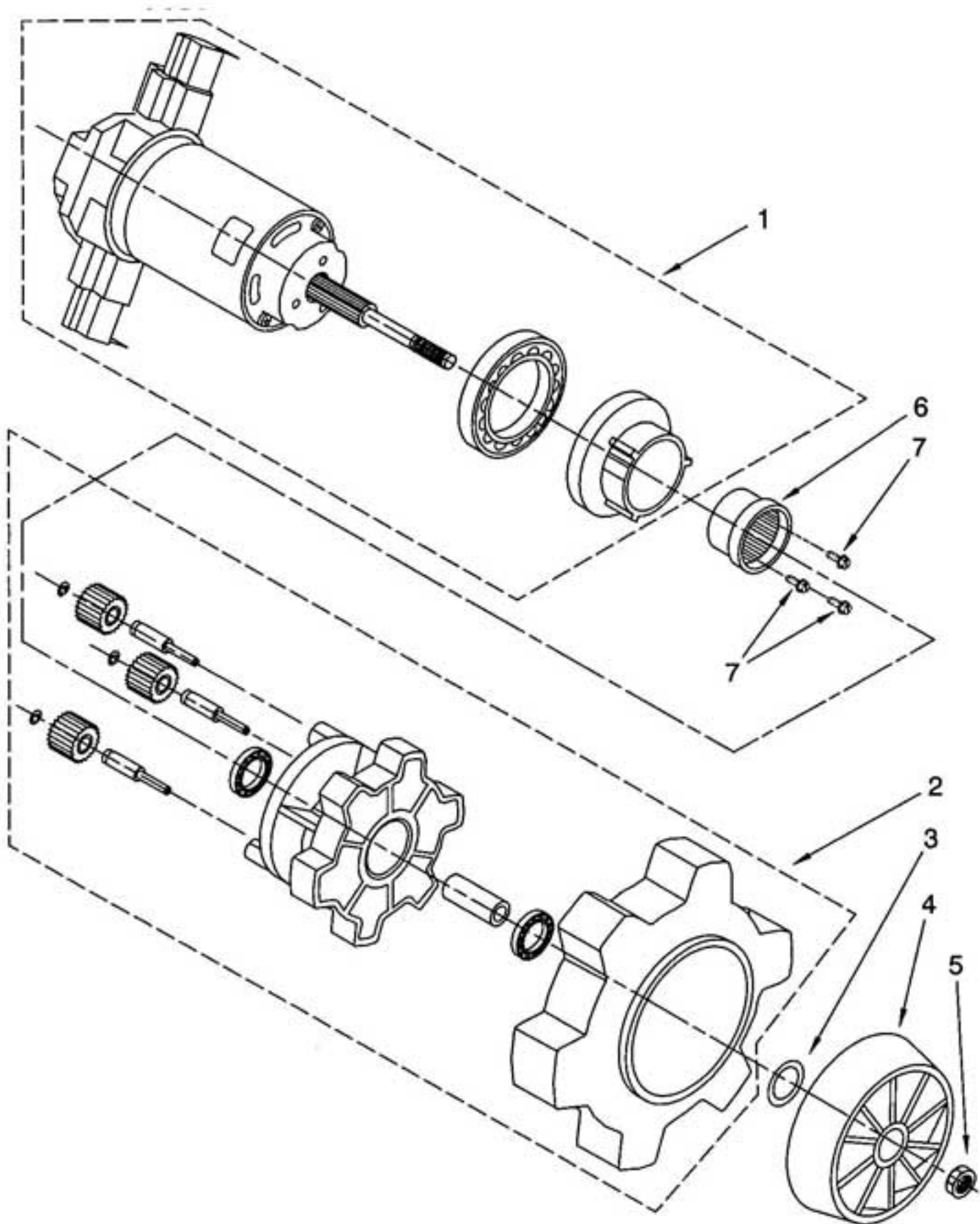
| | | |
|----|----------------|--------------------------------------|
| 1 | KE-8174882 | WINDOW |
| 2 | KE-8174914 | SCREW |
| 3 | KE-8174883 | COVER, LIGHT |
| 4 | KE-8174884 | FILTER, LIGHT COVER |
| 5 | KE-4368879 | SCREW |
| 6 | KE-8174885 | COVER, NOZZLE |
| 7 | KE-8174886 | HOUSING, NOZZLE |
| 8 | KE-8174887 | REFLECTOR, NOZZLE |
| 9 | FA-3515 | BULB, LIGHT (SEARS NO. 20-5240) |
| 10 | KE-8174888 | SOCKET, BULB |
| 11 | KE-8174889 | GUARD, FURNITURE |
| 12 | KE-8174890 | CAM, HEIGHT ADJUSTMENT |
| 13 | N/P | SHAFT, ROLLER (NON-SERVICE) |
| 14 | KE-4370425 | WHEEL (NON-SERVICE) |
| 15 | KE-4370183 | CUSHION, RUBBER |
| 16 | KE-8174891 | SPRING |
| 17 | KE-8174892 | PLATE, WHEEL SUPPORT |
| 18 | KE-8174893 | NOZZLE ROLLER UNIT |
| 19 | KE-8174894 | LEAD WIRE, MOTOR (BROWN) |
| 20 | KE-8174895 | LEAD WIRE, MOTOR (BLUE) |
| 21 | KE-8174896 | LEAD WIRE |
| 22 | KE-8174897 | LEAD WIRE |
| 23 | KE-8174898 | KNOB, SLIDING HEIGHT ADJUSTMENT |
| 24 | KE-8174899 | SWITCH BUTTON |
| 25 | KE-8174900 | SWITCH, ON/OFF |
| 26 | KE-8174901 | THERMAL PROTECTOR SET |
| 27 | KE-4369704 | OVERLOAD PROTECTOR |
| 28 | KE-8174903 | SCREW |
| 29 | KE-4368653 | SWITCH, MAIN (ON/OFF) |
| 30 | KE-8174904 | LOWER FELT |
| 31 | KE-4368716 | LEVER, SWITCH |
| 32 | KE-8174905 | PIPE, NOZZLE |
| 33 | KE-4368563 | SCREW |
| 34 | KE-8174906 | PEDAL |
| 35 | KE-8174907 | PLATE, PEDAL |
| 36 | KE-4368563 | SCREW |
| 37 | NLA | WASHER (NON-SERVICE) |
| 38 | NLA | SPRING, ROUND NO. 5/16 (NON SERVICE) |
| 39 | KE-8174908 | SUPPORT, RUBBER MOTOR (LEFT) |
| 40 | KE-8174910 | BRUSH "B" |
| 41 | KE-8174909 | BRUSH "A" |
| 42 | KE-8174911 | FELT, UPPER |
| 43 | KE-8174912 | FILTER |
| 44 | KE-8174913 | LOWER PLATE |
| 45 | KE-8191759 | WIPER |
| 46 | KE-4369085 | SCREW |



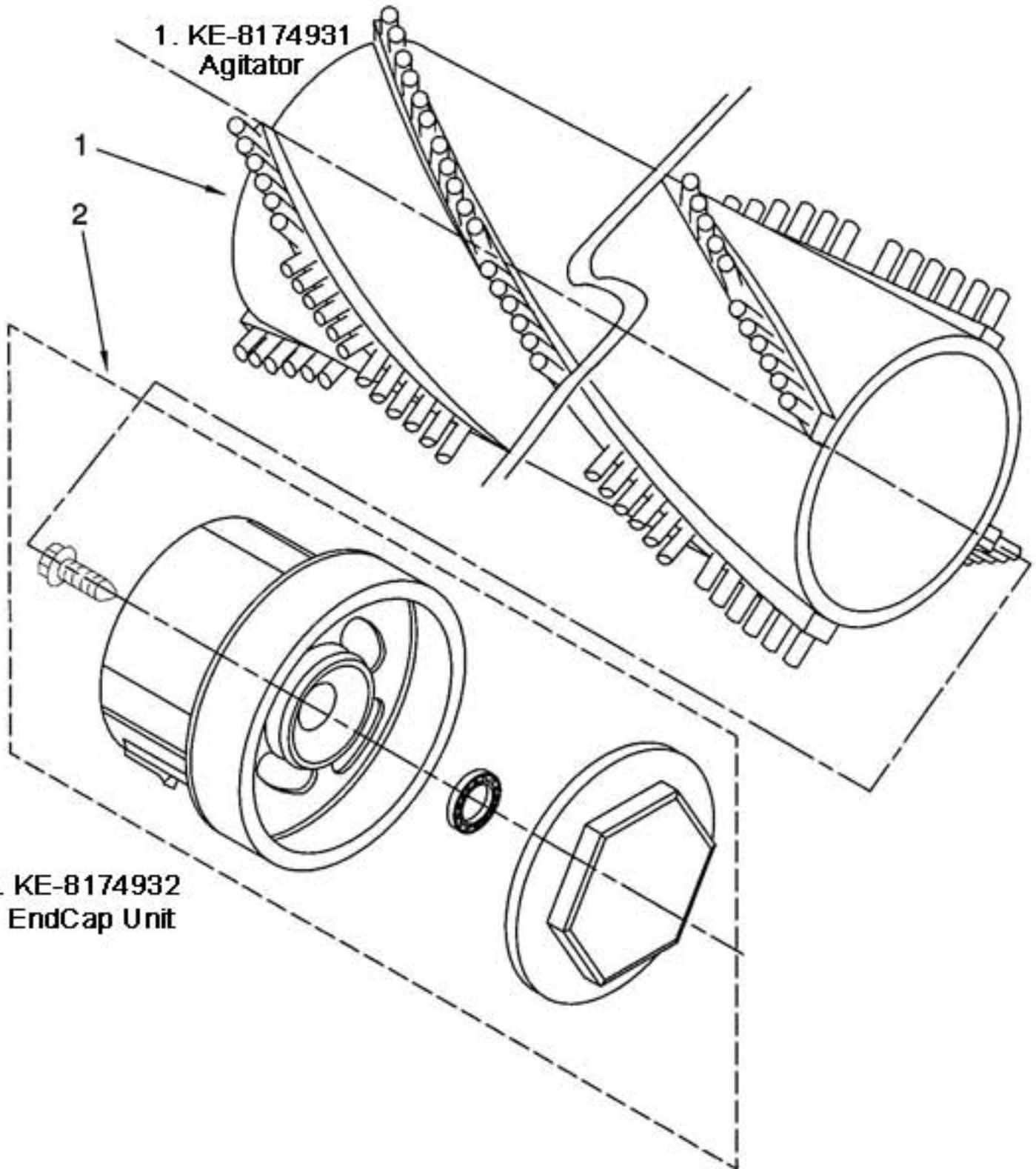
LITERATURE PARTS



| | | |
|----|------------|--------------------|
| 1 | KE-4370401 | HOSE, FLEXIBLE |
| 2 | KE-4368684 | TOOL, CREVICE |
| 3 | KE-4370414 | WAND, TELESCOPIC |
| 4 | KE-4368996 | REGULATOR, SUCTION |
| 5 | KE-4368681 | BRUSH, DUSTING |
| 6 | KE-4368609 | BRUSH, COMBINATION |
| 7 | KE-4368610 | HOLDER, BRUSH |
| 8 | LIT8175058 | MANUAL, OWNERS |
| 8A | LIT8191754 | LIST, REPAIR PARTS |
| 9 | KE-4370824 | HOSE UNIT |
| 10 | KE-8195132 | HANDI-MATE JR. |
| 11 | KE-4369670 | ADAPTER TUBE |



- 1 KE-8174926 MOTOR ASSEMBLY
- 2 KE-8174927 GEAR UNIT
- 3 KE-8174928 WASHER
- 4 KE-8174929 FAN
- 5 KE-8174930 NUT
- 6 KE-8174945 INTERNAL GEAR
- 7 KE-8174944 SCREW (3)



1. KE-8174931
Agitator

1

2

2. KE-8174932
EndCap Unit