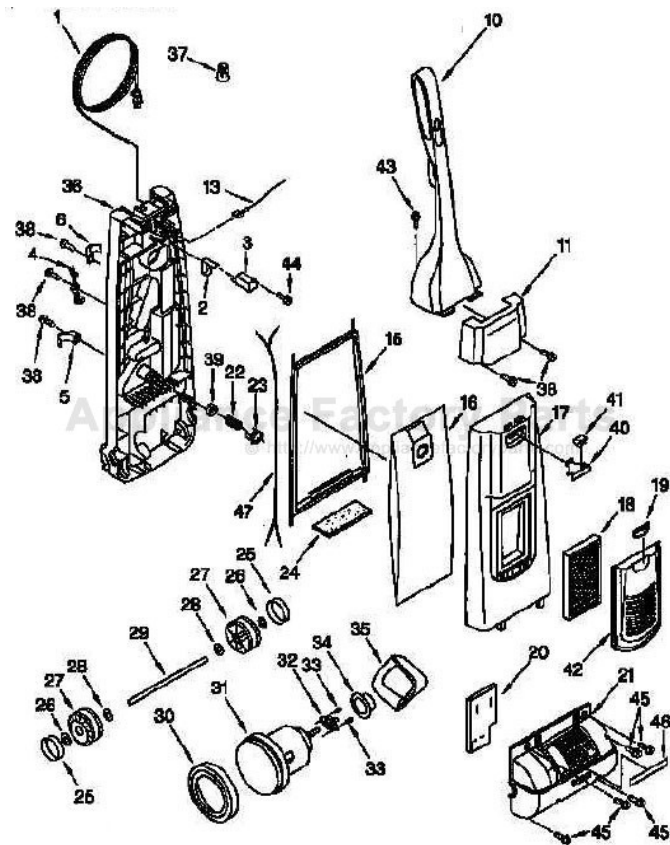


This Owner's Manual is provided and hosted by [Appliance Factory Parts](#).



Kenmore 116.38612790 Owner's Manual

[Shop genuine replacement parts for Kenmore
116.38612790](#)



[Find Your Kenmore Vacuum Cleaner Parts - Select From 746 Models](#)

----- Manual continues below part list -----

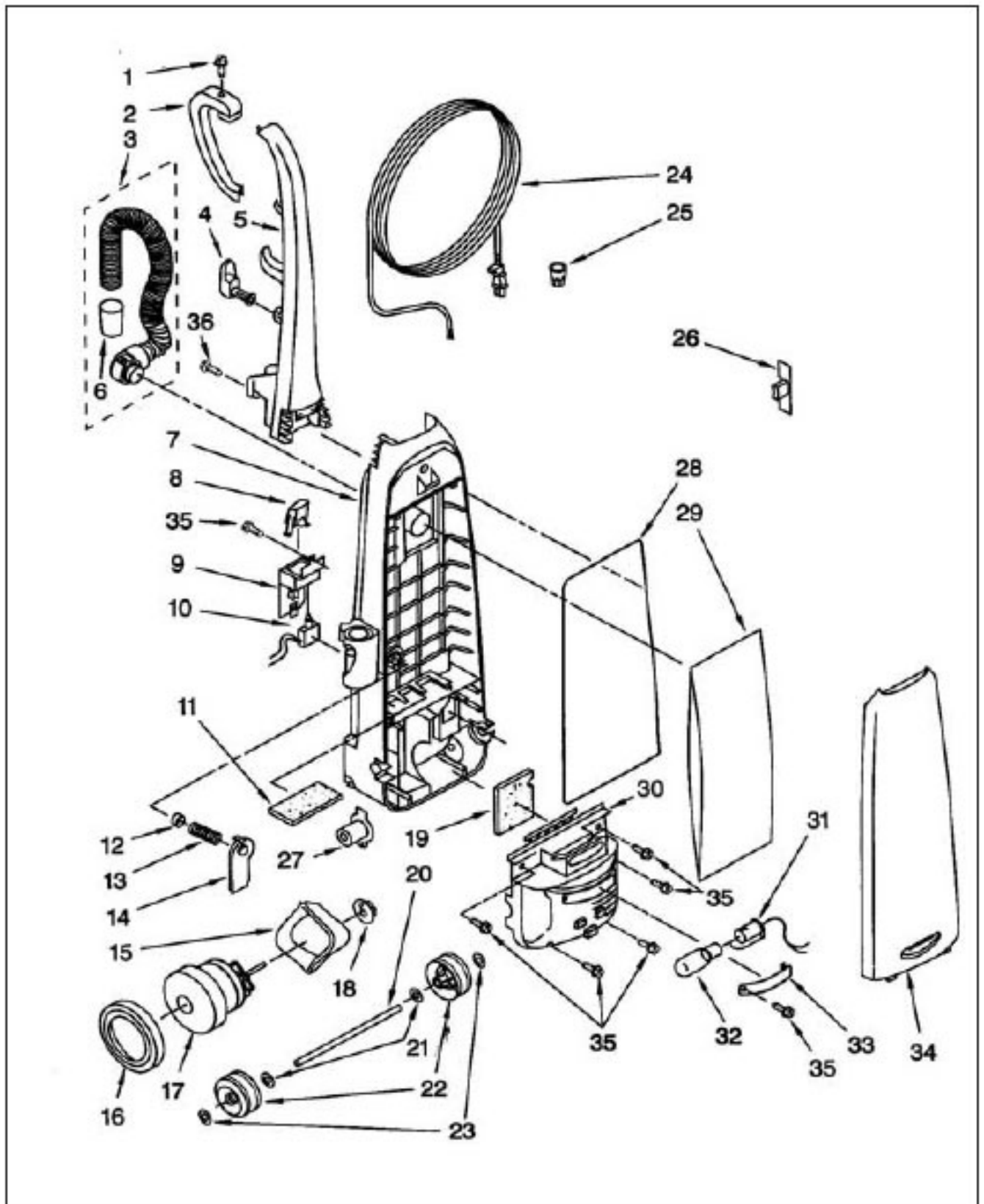
Available Replacement Parts for Kenmore 116.38612790

[KER-1800](#)

FILTER VA

KENMORE Original & Replacement

UPRIGHT VACUUM Model 116.39429990



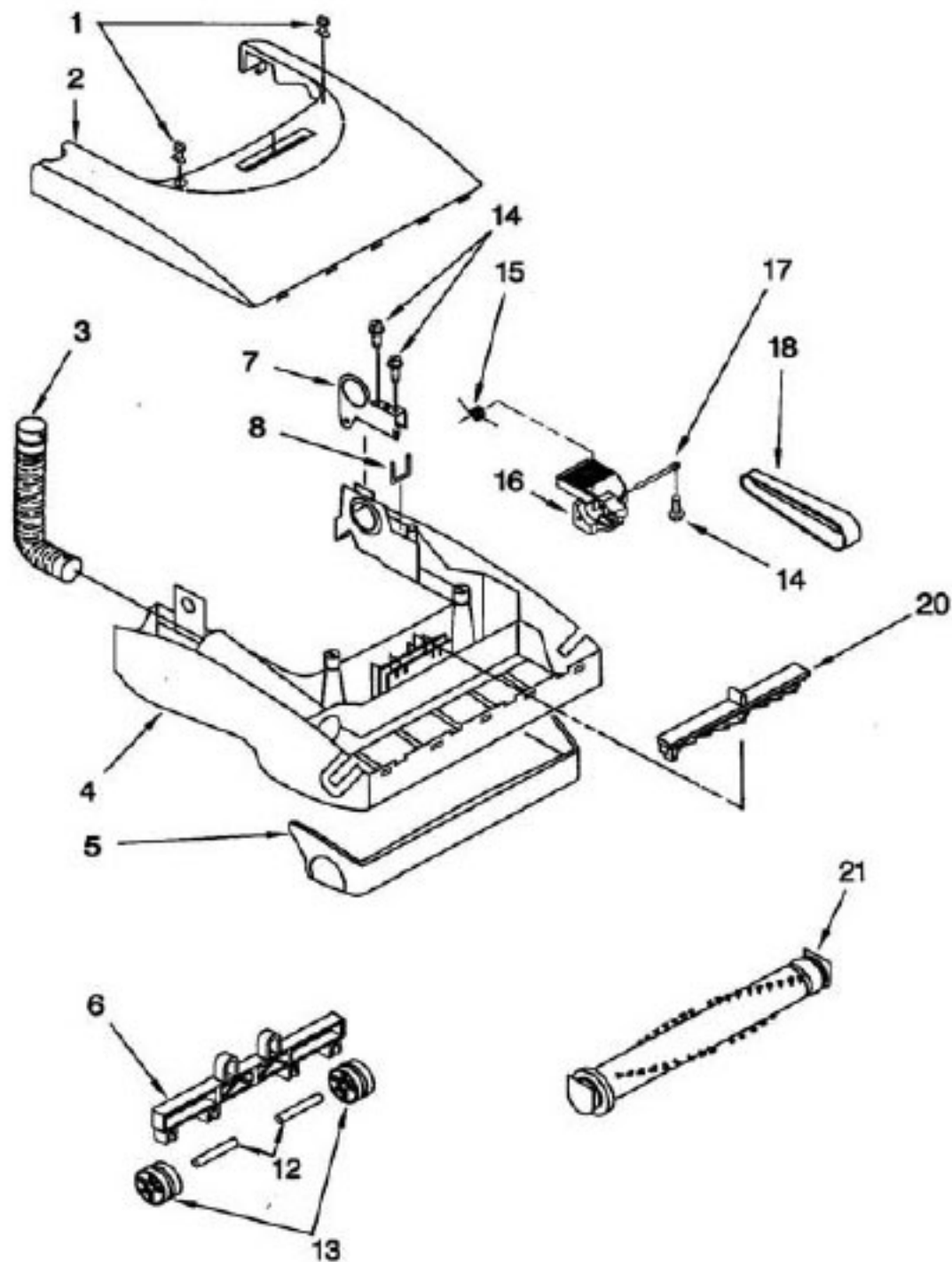
Original & Replacement **KENMORE** UPRIGHT VACUUM Model 116.39429990

| KEY | PART NO. | DESCRIPTION |
|-----|-----------------|-------------------------------|
| 1 | KE-4370790 | SCREW, HANDLE LOOP |
| 2 | KE-4370782 | LOOP, HANDLE |
| 3 | KE-4370760 | HOSE UNIT (INCLUDES ILLUS. 6) |
| 4 | KE-4370785 | HOOK, UPPER CORD STORAGE |
| 5 | KE-4370781 | HANDLE |
| 6 | KE-4370786 | INSERT, AIR INLET |
| 7 | KE-4370757 | DUST COMPARTMENT |
| 8 | KE-4370764 | BUTTON, ON-OFF |
| 9 | KE-4370762 | COVER, SWITCH |
| 10 | KE-4370761 | SWITCH, ON-OFF |
| 11 | KE-4370765 | FILTER, SECONDARY |
| 12 | KE-4370806 | PROTECTOR |
| 13 | KE-4370845 | SPRING |
| 14 | KE-4370758 | COVER, PROTECTOR |
| 15 | KE-4369569 | SUPPRESSOR, NOISE |
| 16 | KE-4370404 | SUPPORT, MOTOR FRONT |
| 17 | KE-4370766 | MOTOR, FAN |
| 18 | KE-4370265 | SUPPORT, MOTOR REAR |
| 19 | KE-4370787 | PACKING, REAR COVER |
| 20 | KE-4369561 | SHAFT, ROLLER |
| 21 | KE-4369562 | WASHER (2) |
| 22 | KE-4370759 | WHEEL (2) |
| 23 | KE-4369564 | STOPPER, WHEEL (2) |
| 24 | KE-4370763 | CORD, POWER |
| 25 | KE-4368522 | NUT, WIRE (3) |
| 26 | KE-4370788 | PLASTIC HOLDER |
| 27 | KE-4369527 | PLASTIC SHAFT |
| 28 | KE-4370789 | PACKING, DUST COMPARTMENT |
| 29 | KER-1468 | BAG, DUST, SEARS NO. 20-50688 |
| 30 | KE-4370985 | HOUSING, MOTOR |
| 31 | KE-4370771 | SOCKET, BULB |
| 32 | FA-3515 | BULT, LIGHT SEARS NO. 20-5240 |
| 33 | KE-4370772 | WINDOW |
| 34 | KE-4370986 | DUST COVER |
| 35 | KE-4368563 | SCREW |
| 36 | KE-4370779 | SCREW, HANDLE |

NLA = No Longer Available

KENMORE Original & Replacement

UPRIGHT VACUUM Model 116.39429990



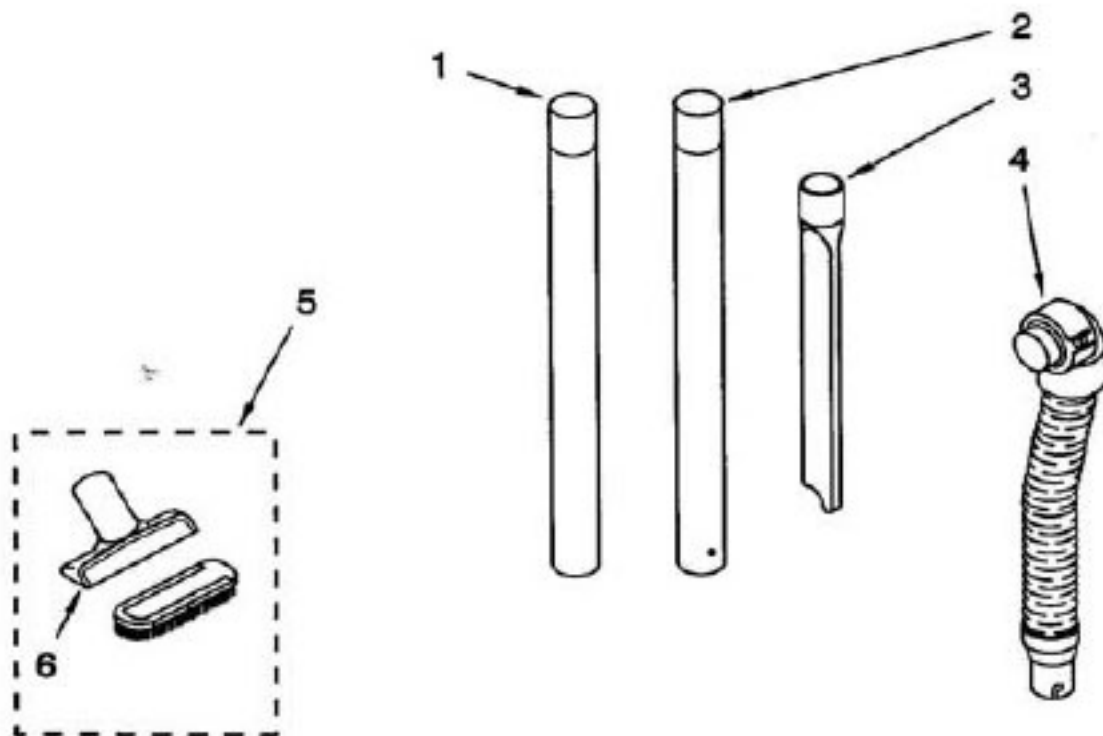
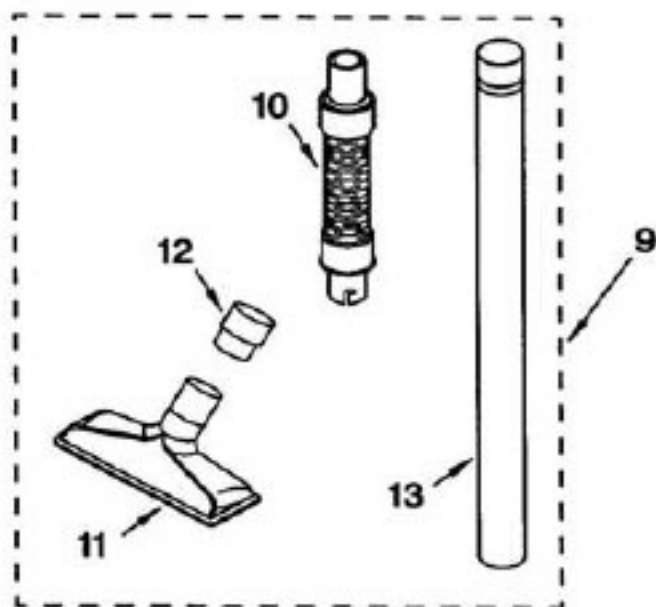
Original & Replacement **KENMORE**
UPRIGHT VACUUM Model 116.39429990

| KEY | PART NO. | DESCRIPTION |
|-----|----------------|--------------------------------|
| 1 | KE-4370783 | LATCH, NOZZLE (2) |
| 2 | KE-4370984 | NOZZLE HOUSING |
| 3 | KE-4370776 | HOSE, NOZZLE |
| 4 | KE-4370767 | LOWER PLATE |
| 5 | KE-4370769 | GUARD, FURNITURE |
| 6 | KE-4370768 | CAM, HEIGHT ADJUSTMENT |
| 7 | KE-4370784 | FRAME |
| 8 | KE-4369535 | GUARD, BELT |
| 12 | KE-4369499 | SHAFT, ROLLER (2) |
| 13 | KE-4369544 | WHEEL (2) |
| 14 | KE-4368563 | SCREW (3) |
| 15 | KE-4370258 | SPRING, PEDAL |
| 16 | KE-4370394 | PEDAL |
| 17 | KE-4370259 | PEDAL SHAFT |
| 18 | PR-1015 | BELT, SEARS NO. 20-5275 |
| 20 | KE-4369542 | SLIDING KNOB HEIGHT ADJUSTMENT |
| 21 | KE-4370773 | AGITATOR ASSEMBLY |

NLA = No Longer Available

KENMORE Original & Replacement

UPRIGHT VACUUM Model 116.39429990



Original & Replacement **KENMORE**
UPRIGHT VACUUM Model 116.39429990

| <u>KEY</u> | <u>PART NO.</u> | <u>DESCRIPTION</u> |
|------------|-----------------|---------------------|
| 1 | KE-4369625 | WAND, EXTENSION |
| 2 | KE-4369688 | WAND, EXTENSION |
| 3 | KE-4368684 | TOOL, CREVICE |
| 4 | KE-4370760 | HOSE, FLEXIBLE |
| 5 | KE-4368609 | BRUSH, COMBINATION |
| 6 | KE-4368610 | HOLDER, BRUSH |
| 9 | KE-4370823 | ATTACHMENT ASSEMBLY |
| 10 | KE-4370824 | HOSE UNIT |
| 11 | KE-4369669 | BRUSH, FLOOR NOZZLE |
| 12 | KE-4369670 | ADAPTER TUBE |
| 13 | KE-4369688 | EXTENSION WAND |

NLA = No Longer Available