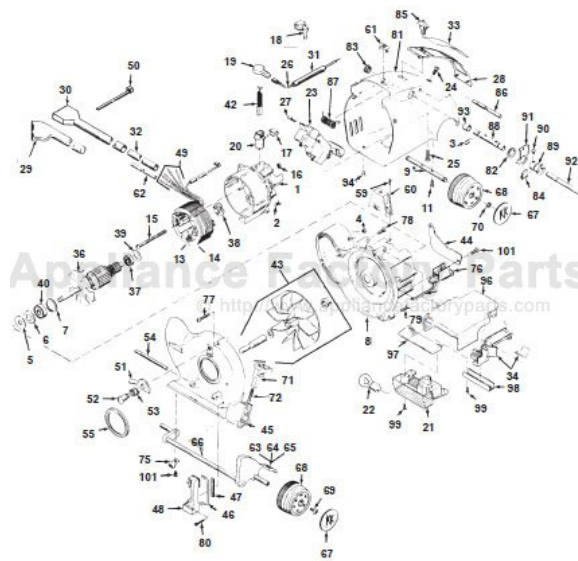


This Owner's Manual is provided and hosted by [Appliance Factory Parts](#).



Kirby 2HD HERITAGE II Owner's Manual

[Shop genuine replacement parts for Kirby 2HD
HERITAGE II](#)



[Find Your Kirby Vacuum Cleaner Parts - Select From 64 Models](#)

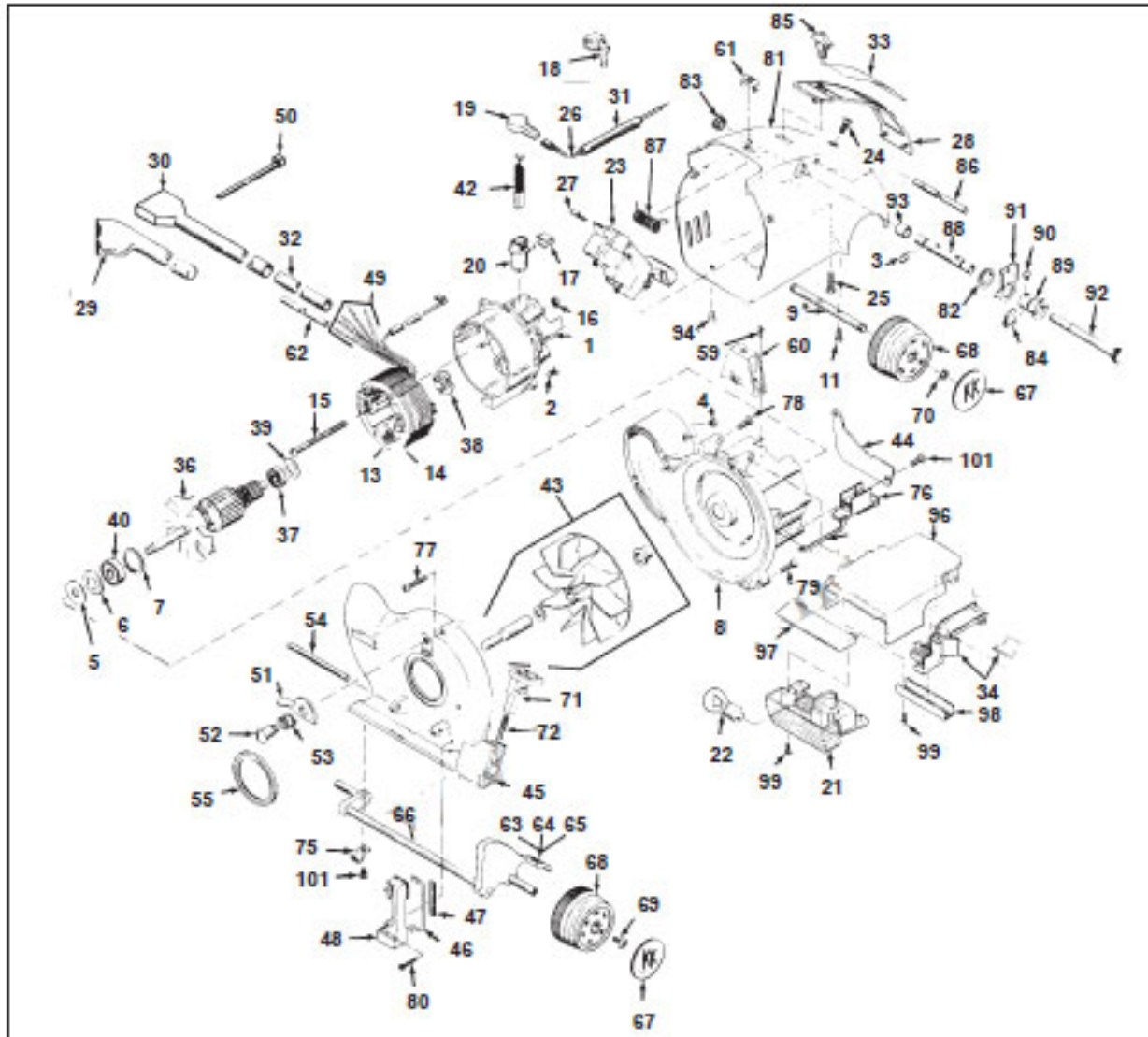
----- Manual continues below part list -----

Available Replacement Parts for Kirby 2HD HERITAGE II

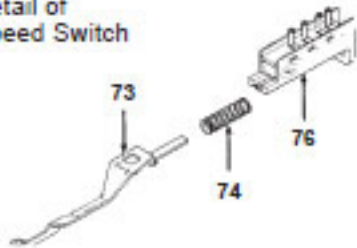
esk1005	FILTER BELT ROUND FOAM
1211	RUBBER PLUG FOR HERMIDIFIER
K-301289	BELT, ALL RUG, 1PK

KIRBY Original

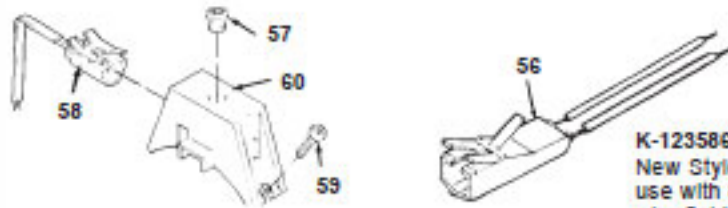
HERITAGE II Model 2HD



Detail of Speed Switch



Detail of Power On Light



K-123586
New Style
use with 8
wire field

Original **KIRBY**

HERITAGE II Model 2HD

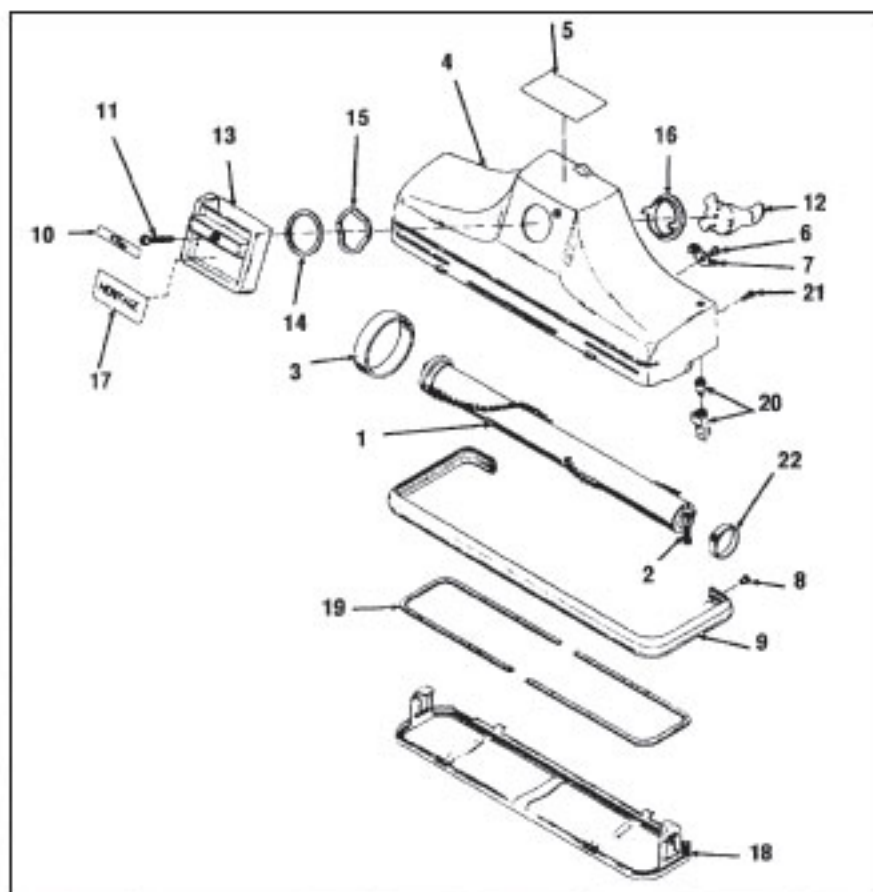
KEY	PART NO.	DESCRIPTION	KEY	PART NO.	DESCRIPTION
1	K-100180	Motor Bell Housing	52	K-1211	Nozzle Lock Screw
2	K-100278	Bell Housing Screw	53	K-1212	Nozzle Lock Spring
3	K-1005	Handle Fork Pin Spring Clip	54	K-121656	Nozzle Attachment Shaft
4	K-100684	Emtor Connector Pin	55	K-122068	Nozzle Seal Ring
5	K-100773	Front Bearing Seal	56	K-123586	Indicator Light
6	K-100873	Front Bearing Seal Retainer	57	K-123684	Power On Light Lens Clear
7	K-101076	Front Bearing Retainer Ring	58	K-123784	Power On Light Assembly
8	K-101184	Motor Casting	59	K-124284	Power On Light Bracket Screw
9	K-102080	Rear Wheel Shaft, Large Emtor	60	K-124384	Power On Light Bracket
9	K-102084	Rear Wheel Shaft Mini Emtor	61	K-124484	Power On Light Lens Amber
11	K-102269	Rear Axle Screw	62	K-124586	Insulation Tube
	K-103584	Rear Wheel Shaft Spacer (Use With K-102084 Only)	63	NLA	Micro Height Adjustment Screw (Order K-232497)
13	NLA	Field (Order K-103986)	64	K-130784	Ratchet Pedal Label (NI)
14	K-103986	Field (8 Wires)	65	NLA	Height Adjustment Label (NI)
15	K-104673	Field Screw	66	K-131673	Front Bracket Shaft
16	K-104773	Field Screw Nut	67	NLA	Wheel Hub Cap (Order K-131888)
17	K-106859	Commutator Brush Retainer Clip	68	K-131982	Wheel Black
18	K-107173	Commutator Brush Cap	69	K-1321	Wheel Mounting Screw
19	K-107185	Commutator Brush Cap	70	K-132180	Wheel Retainer Clip
20	K-107276	Commutator Brush Holder	71	K-631589	Ratchet Lock
21	K-108979	Headlight Lens Assembly	72	K-1331	Ratchet Lock Spring
22	K-109273	Headlight Bulb	73	K-133882	Speed Switch Arm
23	K-110584	Foot Switch Black	74	K-133981	Speed Switch Spring
24	K-110673	Foot Switch Top Screw	75	K-134073	Front Shaft Clamp
25	K-110773	Foot Switch Bottom Screw	76	K-134384	Speed Switch
26	K-110985	Black Wire W/Terminal	77	K-134673	Fan Housing Screw Long
27	K-111180	Foot Switch Clip	78	K-134756	Fan Housing Screw Short.
28	K-111284	Scuff Plate Black	79	K-135169	Fan Housing/Motor Housing Screw
29	K-111385	Speed Switch and Cable Boot	80	K-135473	Speed Switch Mounting Screw
30	K-111481	Speed Switch and Cable Boot	81	K-135584	Motor Shell Housing Less Axle
31	K-111573	Brush Lead Tube Black	82	K-135860	Shell Bushing Large
32	K-111981	Speed Switch Lead Tube	83	K-135960	Shell Bushing Small
33	K-112086	Scuff Plate Label	84	K-136373	Bushing Spring Clip
34	K-112579	Terminal Block W/Insulator	85	K-136684	Lock Button Black
35	K-112679	Switch Terminal Single	86	K-136979	Handle Lock Shaft
36	K-114973	Armature	87	K-137073	Handle Fork Spring
37	K-115573	Rear Bearing	88	K-137173	Handle Fork Spring Shaft
38	K-115674	Rear Bearing Spring	89	K-137273	Handle Fork Spring Bushing
39	K-115774	Rear Bearing Washer	90	K-137373	Handle Fork Spring Bushing Screw
40	K-116073	Front Bearing	91	K-137579	Handle Fork Yoke
42	K-118076	Commutator Carbon Brush	92	K-137879	Handle Fork Pin
43	K-119078	Fan Complete Lexan	93	K-137973	Handle Fork Oilite Bearing
44	K-119276	Motor Vent Seal	94	K-138470	Motor Shell Mounting Screw
45	K-119781	Fan Case	96	K-160084	Headlight Cap Complete Black
46	K-120381	Speed Switch Lever	97	K-161984	Headlight Cap Bumper Black
47	K-120481	Speed Switch Lever Retainer	98	K-162379	Hold Down Bar
48	K-120584	Speed Switch Lever Cover	99	K-162679	Headlight Screw
49	K-120681	Spade Connector Field	100	K-163379	Headlight Cap Hinge Pin
50	K-120781	Cable Tie	101	K-193281	Front Axle Clamp Screw
51	K-121056	Nozzle Lock			

NI - Not Illustrated

NLA = No Longer Available

KIRBY Original

HERITAGE Models – Rug Nozzle



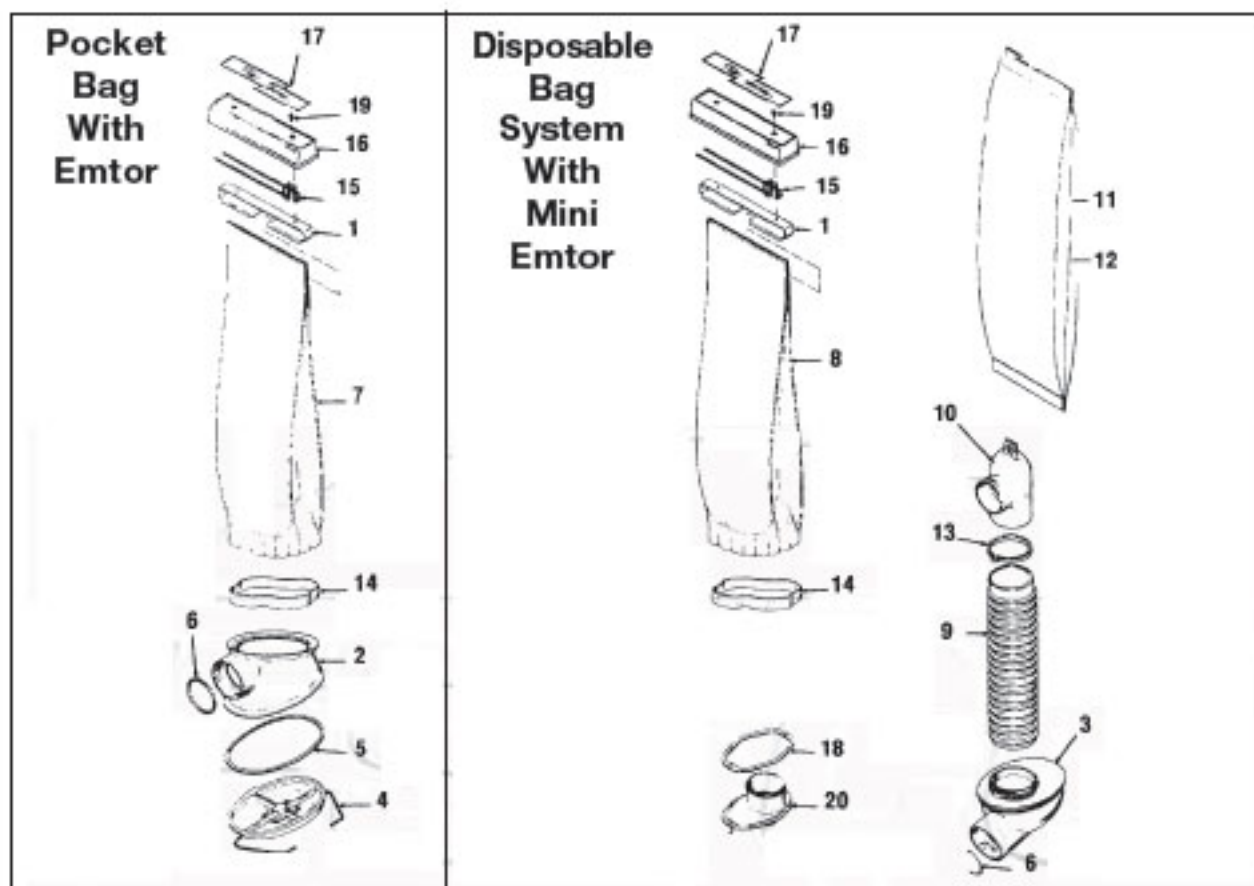
KEY	DESCRIPTION	HERITAGE I 1HD	HERITAGE II	LEGEND 2HD	LEGEND II
1	Brushroll Complete	K-152581	K-152585	K-152585	K-156288
2	Brush Adjusting Screw	NLA	NLA	NLA	NLA
3	Brush Belt	K-301289	K-301289	K-301289	K-301289
4	Nozzle Comp. Less Brushroll	K-141681	K-141685	K-141688	K-141689
5	Belt Lifter Instruction Label	K-146684	K-146684	K-146684	K-146684
6	Rug Plate Cam Rivet	K-141381	K-141381	K-141381	K-141381
7	Rug Plate Latch	K-640689	K-640689	K-640689	K-640689
8	Nozzle Bumper Rivet	K-140869	K-140869	K-140869	K-140869
9	Nozzle Bumper	K-140483	K-140484	K-140484	K-140488
10	Belt Lifter Label	K-146381	K-146388	K-146388	K-146388
11	Belt Lifter Ass'y Screw	K-144781	K-144781	K-144781	K-144781
12	Belt Lifter Hook	K-144291	K-144291	K-144291	K-144291
13	Belt Lifter Casting	K-144081	K-144084	K-144084	K-144088
14	Belt Lifter Flat Washer	K-144681	K-144681	K-144681	K-144681
15	Belt Lifter Spring Washer	K-144181	K-144181	K-144181	K-144181
16	Belt Lifter Bearing	K-145481	K-145481	K-145481	K-145481
17	Belt Lifter Bottom Label	K-146789	K-146789	K-146789	K-146789
18	Rug Plate and Gasket	K-154481	K-154481	K-154481	K-154481
19	Rug Plate Gasket	K-154881	K-154881	K-154881	K-154881
20	*Brushroll Sensor Ass'y	N/A	K-148686	K-148686	K-148686
21	*Brushroll Sensor Screw	N/A	K-148985	K-148985	K-148985
22	*Thread Guard and Magnet Ass'y	N/A	K-155985	K-155985	K-155985

*In Sequence by Number

KIRBY IS CONSOLIDATING PARTS
COLORS ON OLDER MODELS

KIRBY Original

HERITAGE Models Bags & Emtor



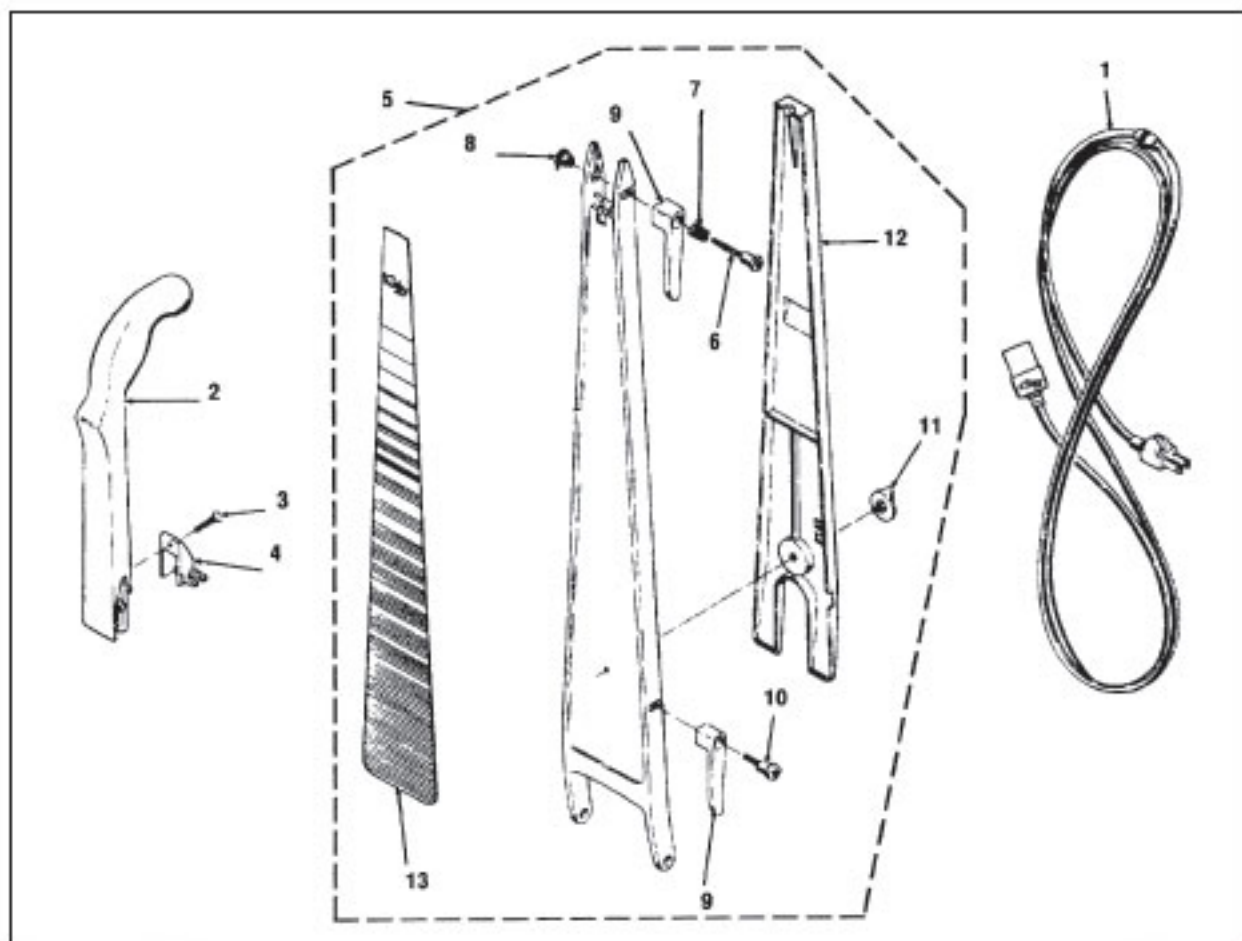
KEY	DESCRIPTION	HERITAGE I 1HD	HERITAGE II/LEGEND 2HD	LEGEND II
1	Bag Support Hanger	K-173681	K-173681	K-173681
2	Emtor Casting	K-179978	K-179978	K-179978
3	Mini-Emtor	N/A	K-181185	K-181185
4	Emtor Tray	K-185981	K-185984	K-185984
5	Emtor Tray Felt Gasket	K-186182	K-186182	K-186182
6	Round Rubber Gasket Metal Emtor	K-188056	K-188056	K-188056
	Round Rubber Gasket Mini Emtor		K-188087	K-188087
7	Bag Only With Pocket	K-189681	NLA	K-189688
8	Bag Only Long Zipper	K-190081	K-190084	NLA (Use K-190084)
9	Disposable Bag Fill Tube Only	K-190384	K-190384	K-190384
10	Disposable Bag Adaptor Top	K-190481	K-190484	K-190484
11	Disposable Paper Bags 3 Pk	K-19068103	NLA	K-19068403
			(Order K-197289)	(Order K-197289)
12	Disposable Paper Bags 9 Pk	NLA	NLA	NLA
			(Order K-197389)	(Order K-197389)
13	Cable Tie Fill Tube	K-191182	K-191182	K-191182
14	Bag Guard	K-191681	K-191684	K-191688
15	Bag Top Wire	K-191781	K-191781	K-191781
16	Bag Top Cover	K-191881	K-191884	K-191888
17	Bag Top Cover Label	K-192281	K-192284	K-192289
18	Fill Tube Bottom Gasket	K-192981	N/A	N/A
19	Bag Clamp Screw	K-193281	K-193281	K-193281
20	Disposable Bag Adaptor Bottom	K-190181	N/A	N/A

NLA = No Longer Available

KIRBY IS CONSOLIDATING PARTS
COLORS ON OLDER MODELS

KIRBY Original

Handle Group HERITAGE Models

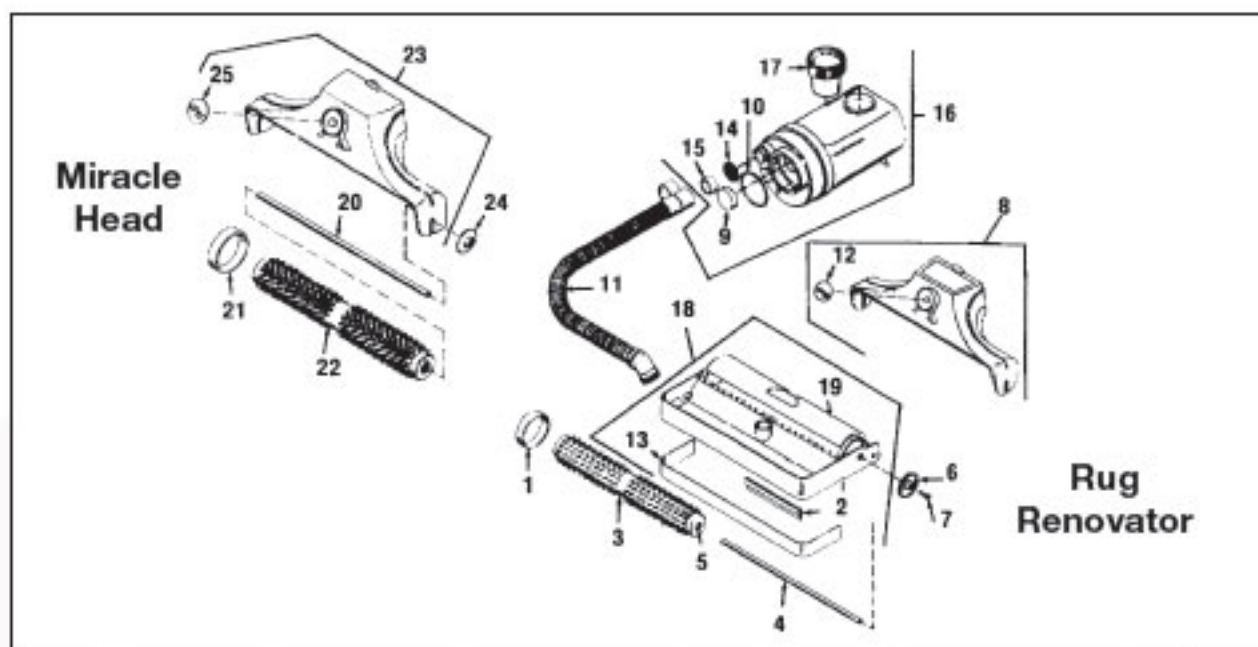


KEY	DESCRIPTION	HERITAGE I 1HD	HERITAGE II/LEGEND 2HD	LEGEND II
1	Cord	K-192081	K-192084	K-192088
2	Handle Grip Complete	K-173381	K-173384	K-173388
3	Handle Grip Bracket Screw	K-175381	K-175381	K-175381
4	Handle Grip Bag Bracket	K-175481	K-175481	K-175481
5	Handle Fork Complete	K-175088	K-175088	K-175088
6	Cord Hook Swivel Screw	K-174067	K-174067	K-174067
7	Cord Swivel Spring	K-174167	K-174167	K-174167
8	Cord Hook Swivel Nut	K-175168	K-175168	K-175168
9	Cord Hook Swivel	K-173881	K-173889	K-173888
10	Cord Hook Shoulder Screw	K-174467	K-174467	K-174486
11	Handle Fork Back Screw	K-174984	K-174984	K-174988
12	Handle Fork Back	K-174581	K-174584	K-174588
13	Handle Fork Label	K-174381	K-174388	K-174388

KIRBY IS CONSOLIDATING PARTS
COLORS ON OLDER MODELS

Original **KIRBY**

Miracle Head & Rug Renovator D50-2HD



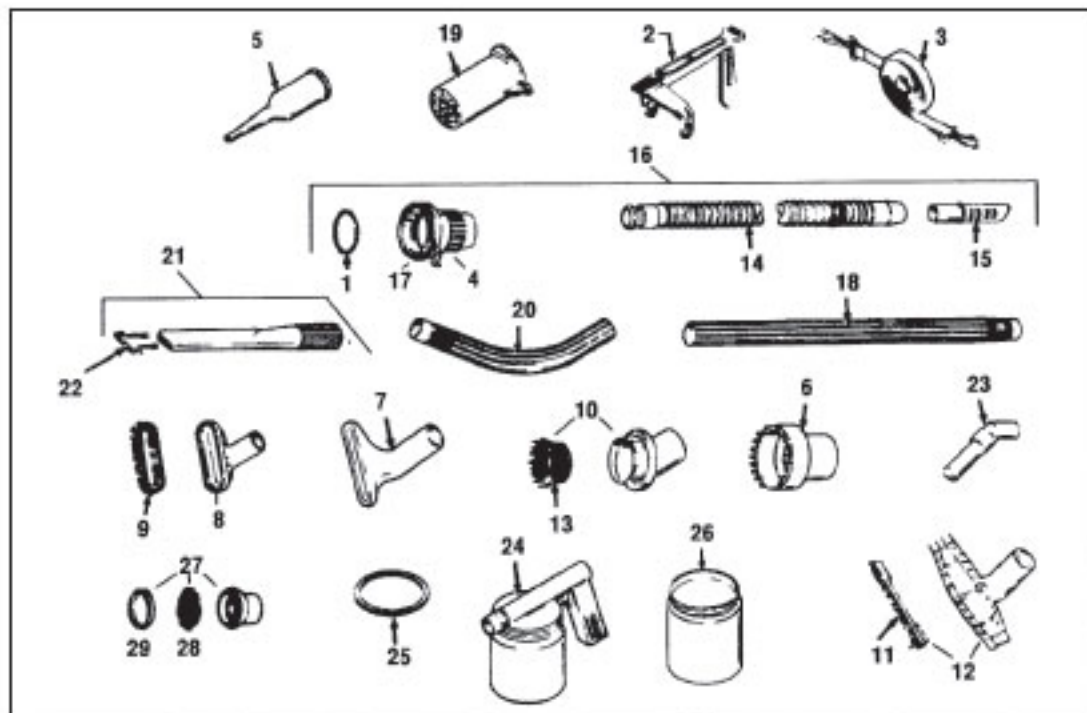
KEY	DESCRIPTION	D50/ 1CR	1CB/ 3CB	1HD	2HD	2HD
1	Belt	K-301289	K-301289	K-301289	K-301289	K-301289
2	Belt Baffle Strip	K-305201	K-305201	K-305201	K-305201	K-305201
3	Brush Renovator	K-305864	K-305864	K-305864	K-305864	K-305864
4	Brush Axle	K-306187	K-306187	K-306187	K-306187	K-306187
5	Brush Bearing	K-305987	K-305987	K-305987	K-305987	K-305987
6	Bumper			K-306384	K-306384	K-306384
7	Bumper Screw			K-306264	K-306264	K-306264
8	Casting	K-303269	K-303269	K-303188	K-303188	K-303188
9	Filter Sponge	K-307364	K-307364	K-307364	K-307364	K-307364
10	Gasket	K-188087	K-188087	K-188087	K-188087	K-188087
11	Hose	K-308084	K-308084	K-308084	K-308084	K-308084
12	Label	N/A	K-303984	K-303981	K-303984	K-303988
13	Suds Leveler	K-305484	K-305484	K-305484	K-305484	K-305484
14	Suds Screen	K-307581	K-307581	K-307581	K-307581	K-307581
15	Suds Screen Retainer	K-307665	K-307665	K-307665	K-307665	K-307665
16	Tank Complete W/Cup	K-306784	K-306784	K-306784	K-306784	K-306784
17	Tank Cup	K-308984	K-308984	K-308984	K-308984	K-308984
18	Tray Less Brush	K-304784	K-304784	K-304784	K-304784	K-304784
19	RR Plastic Shield	K-304484	K-304484	K-304484	K-304484	K-304484
20	Axle Shaft	K-3020	K-3020	K-3020	K-3020	K-3020
21	Belt	K-301289	K-301289	K-301289	K-301289	K-301289
22	Brush Miracle Head	K-300965	K-300965	K-300965	K-300965	K-300965
23	Casting	NLA	NLA	K-303188	K-303188	K-303188
	Casting 2CB/3CB		NLA			
24	Bumper W/Screw	K-302179	K-302179			
	Bumper Only			K-306384	K-306384	K-306384
	Screw Only			K-306264	K-306264	K-306264
25	Belt Lifter Label		K-303988	K-303988	K-303988	K-303988

NLA = No Longer Available

KIRBY IS CONSOLIDATING PARTS
COLORS ON OLDER MODELS

KIRBY Original

Attachment Set HERITAGE Models



KEY	DESCRIPTION	HERITAGE I 1HD	HERITAGE II/LEGEND 2HD	LEGEND II
1	Round Rubber Gasket	K-188087	K-188087	K-188087
2	Lifter Grip	K-200084	K-200084	K-200084
3	Shoulder Strap	K-202084	K-202084	K-202084
4	Hose Motor Connection	K-211084	K-211084	K-211084
5	Inflator	K-213884	K-213884	K-213884
6	Massage Cup	K-214184	K-214184	K-214184
7	Utility Air Nozzle	K-218099	K-218099	K-218099
8	Utility Brush Nozzle	K-210899	K-210899	K-210899
9	Utility Brush Strip	K-2181	K-2181	K-2181
10	Duster Brush	K-218499	K-218499	K-218499
11	Surface Nozzle Brush	K-219662	K-219662	K-219662
12	Surface Nozzle Head	K-219784	K-219784	K-219788
13	Duster Brush Ring	K-220189	K-220189	K-220189
14	Hose Only	K-223086	K-223086	K-223086
15	Hose Tube Swivel	NLA	NLA	NLA
16	Hose Complete	K-223686	K-223686	K-223692
17	Hose Seal Gasket	K-223881	K-223881	K-223881
18	Straight Tube	K-224084	K-224084	K-224088
19	Air Intake Nozzle	K-224188	K-224188	K-224188
20	Curved Tube	K-225084	K-225084	K-225088
21	Radiator Tool	K-225799	K-225799	K-225799
22	Radiator Tool Brush	K-226157	K-226157	K-226157
23	Surface Nozzle Elbow	K-227584	K-227584	K-227588
24	Spray Gun Complete	K-250299	K-250299	K-250299
25	Spray Gun Jar Gasket	NLA	NLA	NLA
26	Spray Gun Jar	NLA	NLA	NLA
27	Suds Cap	NLA	NLA	NLA
28	Suds Screen Ring	NLA	NLA	NLA
29	Suds Cap Screen	NLA	NLA	NLA

NLA = No Longer Available

KIRBY IS CONSOLIDATING PARTS
COLORS ON OLDER MODELS