

This Owner's Manual is provided and hosted by [Appliance Factory Parts](#).



# Koblenz P-4000 Owner's Manual

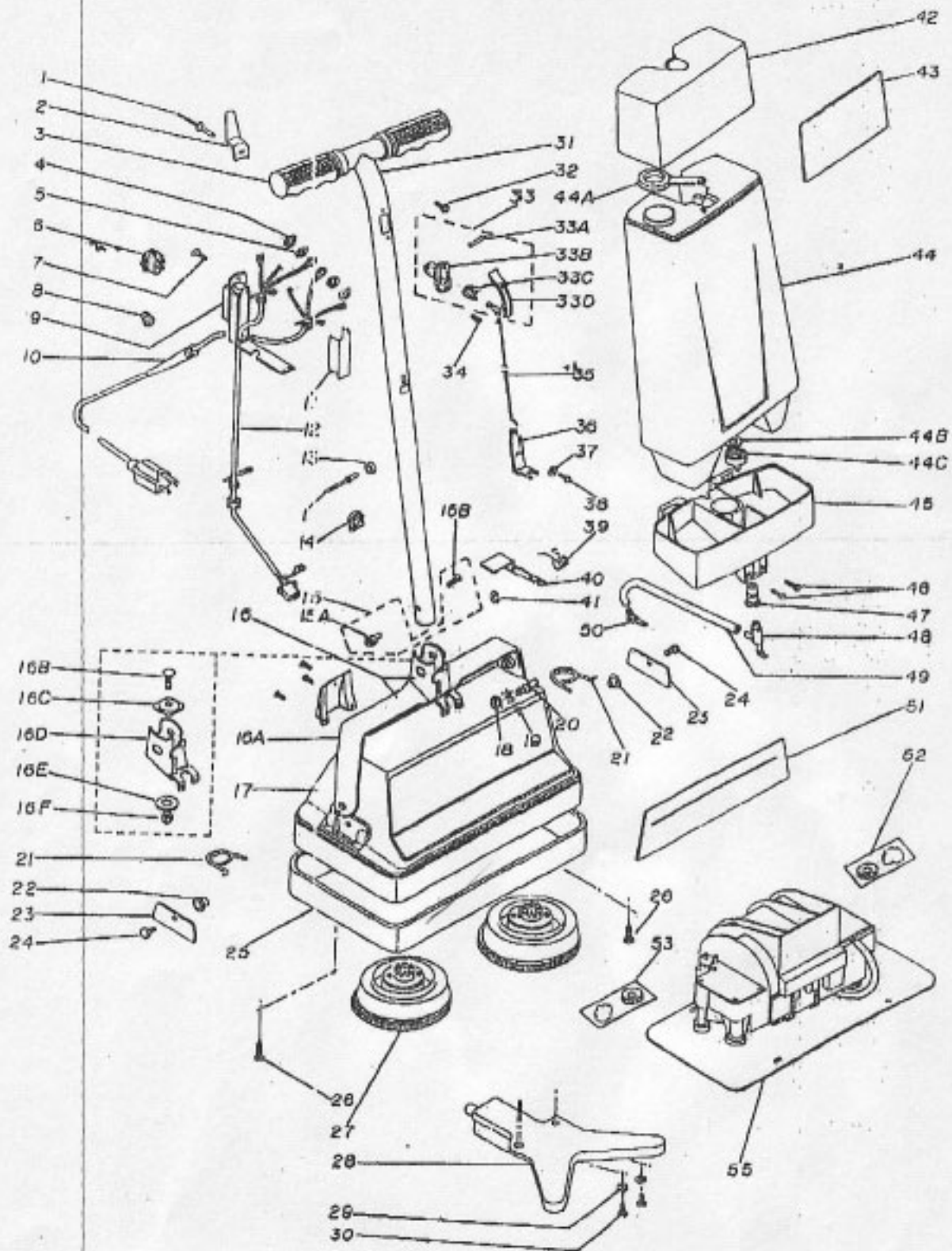
[Shop genuine replacement parts for Koblenz P-4000](#)



[Find Your Koblenz Vacuum Cleaner Parts - Select From 30 Models](#)

----- Manual continues below -----

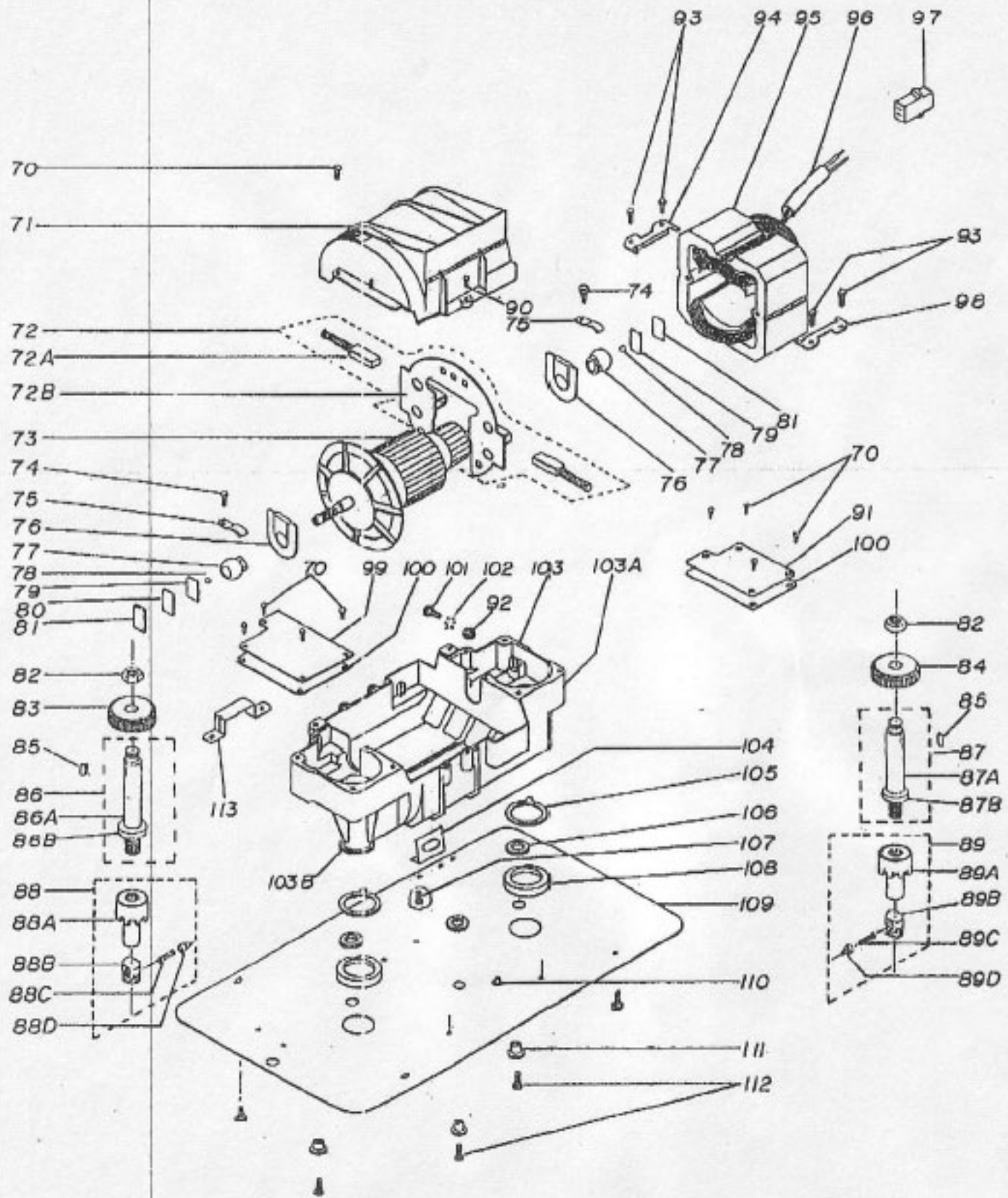
### III. SCHEMATIC. EXTERNAL MACHINE PARTS



## IV. EXTERNAL MACHINE PARTS LIST

ITEM	PART No.	DESCRIPTION	P-4000
1	03-0210-8	POP RIVET	2
2	05-0482-8	LINE CORD RETAINER	1
3	13-0847-5	HANDLE GRIP	2
4	02-0007-1	NUT 8-32	2
5	04-0275-8	STAR WASHER	2
6	11-0069-2	ROCKER SWITCH	1
7	01-0154-3	SCREW No. 6x5/16	1
8	10-0042-1	ELECTRIC CONNECTOR	1
9	13-0845-7	SWITCH ENCLOSURE	1
10	28-0508-7	LINE CORD ASSY	1
11	08-1825-2	WIRING COVER	1
12	28-0520-8	MOTOR CORD ASSY	1
13	25-0789-5	SPACER	1
14	12-0413-0	HEYCO STRAIN RELIEF	1
15	45-0330-8	HANDLE SCREW AND NUT PACKAGE	1
15A	20-0087-5	NUT	1
15B	01-0745-8	SCREW No. 10-32x1	1
16	45-2068-8	YOKE ASSEMBLY	1
16A	23-0518-2	YOKE	1
16B	01-1431-4	SCREW	1
16C	05-2378-5	SQUARE WASHER	1
16D	05-3180-5	SOCKET	1
16E	04-0420-2	WASHER	1
16F	02-0092-3	SECURITY NUT	1
17	23-0505-0	DIE CAST ENCLOSURE	1
18	02-0036-0	NUT 1/4-28	1
19	04-0273-5	STAR WASHER 1/4x1/2x1/32	1
20	25-1034-5	BOLT	1
21	24-0258-4	SPRING	2
22	25-1072-5	SPACER	2
23	05-3297-8	COVER PLATE	2
24	01-0883-7	SCREW 1/4-20x3/4	2
25	12-0487-7	BUMPER	1
26	01-1483-5	SCREW No. 6x3/8	2
27	45-0202-7	BRUSH	2
28	13-0216-5	DISPENSER TRY	1
29	04-0002-8	WASHER 1.56x.375	2
30	01-0154-3	SCREW 6x5/16	2
31	23-0474-9	HANDLE TUBE	1
32	01-1249-0	SCREW No. 8-32x5/8*	1
33	45-1865-8	VALVE CONTROL ASSEMBLY	1
33-A	25-0861-6	ROLL PIN	1
33-B	08-0463-7	BLOCK	1
33-C	24-0158-8	SPRING	1
33-D	09-0464-5	LEVER	1
34	01-0082-8	SCREW No. 6x.375	1
35	09-0811-1	VALVE CONTROL ROD	1
36	05-2197-1	VALVE CONTROL HOOK	1
37	06-2223-5	VALVE CONTROL SPACER	1
38	01-0154-3	SCREW 6x5/16	1
39	24-0227-9	RELEASE SPRING	1
40	05-3035-2	RELEASE PEDAL	1
41	04-0237-0	"C" WASHER RETAINER	1
42	13-1406-1	TANK TOP COVER	1
43	17-2482-1	TOP COVER INSERT	1
44	45-0015-3	TANK 120 OZ	1
44-A	13-0084-9	TANK PLUG	1
44-B	04-0136-4	GASKET	1
44-C	13-0088-0	VALVE BODY	1
45	13-0848-3	TANK BOTTOM COVER	1
46	01-1093-2	SCREW 8x3/8	2
47	12-0086-3	VALVE GASKET	1
48	13-0582-0	TANK ELBOW	1
49	13-0071-4	TUBING	1
50	13-0065-6	TRAY ELBOW	1
51	17-2494-7	ENCLOSURE INSERT	1
52	45-1717-1	GEAR AND GREASE PACKAGE (COMM)	1
53	45-1718-9	GEAR AND GREASE PACKAGE (FAN)	1
55	45-1910-2	MOTOR PACK ASSEMBLY	1

# V. SCHEMATIC. INTERNAL MACHINE PARTS



## VI. INTERNAL MACHINE PARTS LIST

ITEM	PART No.	DESCRIPTION	P-4000
70	01-1483-5	SCREW 8x3/8	10
71	13-1418-6	MOTOR COVER	1
72	26-0324-5	BRUSH HOLDER ASSEMBLY	1
72-A	46-0104-3	CARBON BRUSH ASSEMBLY	2
72-B	46-0590-3	BRUSH SUPPORT	1
73	26-0518-6	ARMATURE	1
74	01-1490-0	SCREW 8x6/16	2
75	05-0607-1	BEARING SUPPORT	2
76	12-0138-4	BEARING SEAL	2
77	26-0028-0	BEARING	2
78	26-0001-3	THRUST BALL	2
79	25-0058-3	THRUST PLATE THICK 0.050	2
80	25-1068-4	THRUST PLATE THIN 0.005	1
81	25-0060-1	THRUST PLATE THIN 0.010	4
82	02-0018-2	NUT 3/8-24	2
83	42-0012-7	GEAR (FAN)	1
84	42-0011-9	GEAR (COMM)	1
85	25-0988-3	SPINDLE KEY	2
86	23-0448-3	SPINDLE ASSEMBLY (FAN)	1
86-A	25-0888-7	SPINDLE (FAN)	1
86-B	06-0558-2	FRICTION SEAL	1
87	23-0447-6	SPINDLE ASSEMBLY (COMM)	1
87-A	25-0885-9	SPINDLE (COMM)	1
87-B	06-0558-2	FRICTION SEAL	1
88	46-1834-4	BRUSH DRIVE ASSEMBLY (FAN BLACK)	1
88-A	13-1072-1	BRUSH DRIVE	1
88-B	13-1071-3	BRUSH DRIVE CAP.	1
88-C	24-0228-3	SPRING	1
88-D	25-0987-5	BRUSH RETAINER	1
89	46-1833-6	BRUSH DRIVE ASSEMBLY (COMM. YELLOW)	1
89-A	13-1073-9	BRUSH DRIVE	1
89-B	13-1174-5	BRUSH DRIVE CAP.	1
89-C	24-0228-3	SPRING	1
89-D	25-0987-5	BRUSH RETAINER	1
90	01-1583-2	SCREW No. 6x7/8"	1
91	23-0462-4	GEAR CASE COVER (COMM)	1
92	02-0007-1	NUT 6-32	2
93	01-1492-8	SCREW No. 8x1/2"	4
94	05-2882-0	FIELD RETAINER	1
95	28-0253-6	FIELD	1
96	08-1832-8	FIELD SLEEVE	1
97	10-0081-2	CONNECTION BLOCK	1
98	05-2884-6	FIELD RETAINER	1
99	23-0461-6	GEAR CASE COVER (FAN)	1
100	37-0133-1	GEAR CASE GASKET	2
101	01-1249-0	SCREW 8-32x5/8	1
102	04-0278-8	STAR WASHER	2
103	23-0448-7	MOTOR FRAME ASSEMBLY	1
103-A	06-0587-3	MOTOR FRAME	1
103-B	28-0148-8	SPINDLE BRUSHING	2
104	08-3388-4	LINE CORD RETAINER	1
105	08-3032-9	WASHER	2
106	04-0019-2	WASHER	3
107	01-0204-6	SCREW No. 6x1/4 TYPE A	2
108	12-0467-6	RUBBER SEAL	2
109	05-3378-0	BOTTOM PLATE	1
110	13-0089-9	SPACER	1
111	25-1081-8	SPACER	3
112	01-1492-8	SCREW No. 8x1/2 TYPE B	7
113	05-2717-6	RETAINER	1