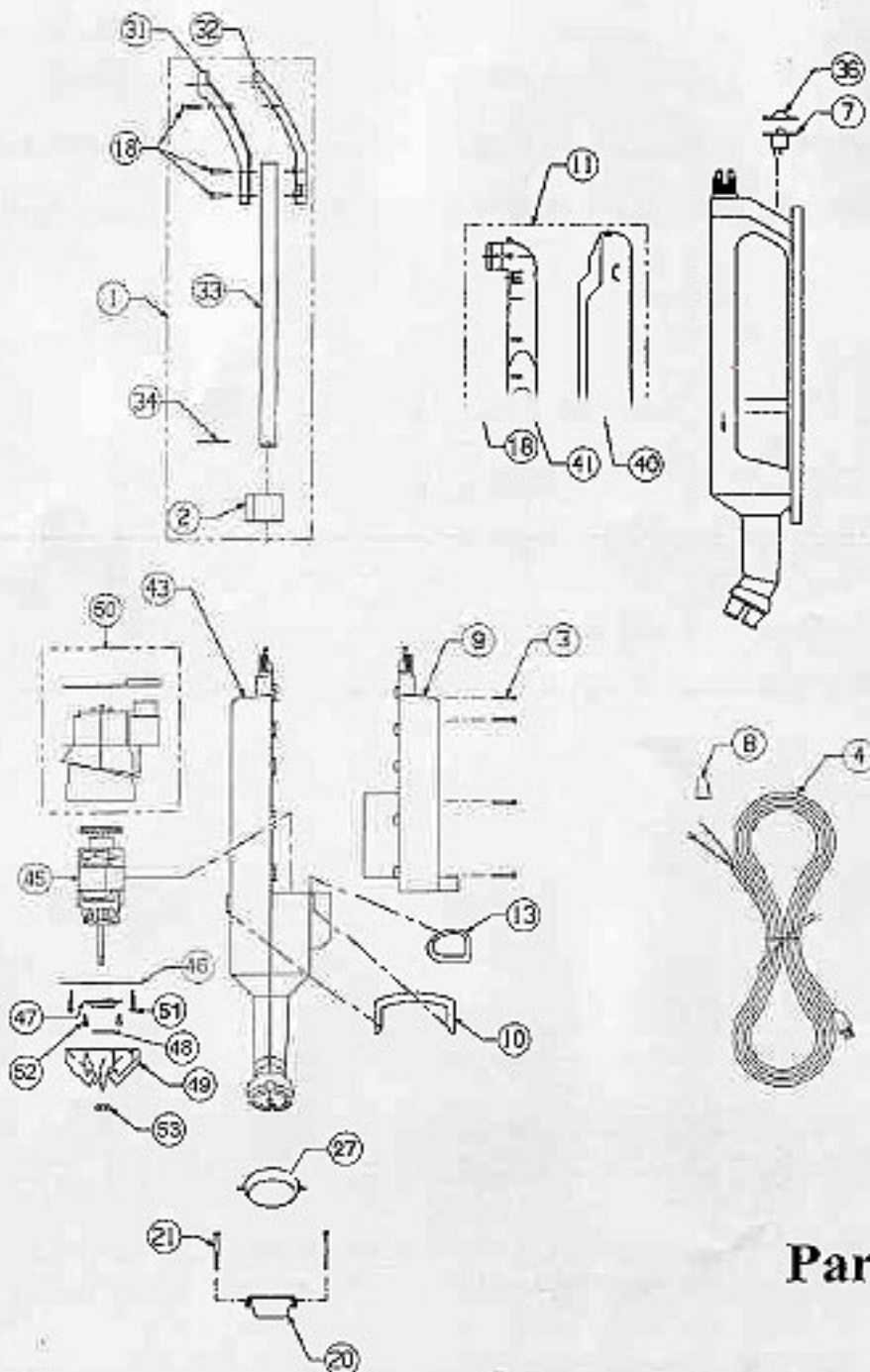


Part Numbers Listing: APU255 & BR225

#	Item	Order #	Qty.	Pk.			
1	HANDLE ASSEMBLY	09-26585-04	1	1			
2	COLLAR LOCK	26538-02-0327	1	1			
4	CORD ASSEMBLY	26847-01	1	1			
5	FRONT WHEEL AXLE	24468P2	2	1			
6	FRONT WHEEL	25311-02-0327	2	1			
7	MAIN SWITCH	00941-0037	1	1			
9	LEFT HOUSING ASSEMBLY	09-26853-01	1	1			
10	HANDI HANDLE	26541-01-0327	1	1			
11	BAG COVER ASSEMBLY	09-26872-01	1	1			
12	OWNER'S MANUAL (APU255)	26852-02	1	1			
12A	OWNER'S MANUAL (BR225)	26869-03	1	1			
13	LOWER DUCT SEAL	26529-02	1	1			
14	POWER NOZZLE MOTOR (APU255)	26842-01	1	1			
15	BELT (APU255)	26610-01	1	1			
16	RETAINER BEARING (APU255)	09-26615-01	2	2			
17	REAR WHEEL (APU255)	26552-02-0327	2	1			
19	NOZZLE BASE ASSEMBLY (APU255)	09-26830-03	1	1			
19A	NOZZLE BASE ASSEMBLY (BR225)	09-26874-01	1	1			
20	POWER NOZZLE CLAMP w/SEAL	09-26886-01	1	1			
22	NOZZLE COVER (APU255)	26557-04-0327	1	1			
22A	NOZZLE COVER (BR225)	26557-03227	1	1			
23	POWER NOZZLE ASSEMBLY (APU255) Type 1 Units Only	09-26785-02	1	1			
	POWER NOZZLE ASSEMBLY (APU255) Type 2 Units Only	09-26785-03	1	1			
23A	NOZZLE ASSEMBLY (BR225)	09-26867-01	1	1			
24	ROCKER SWITCH (APU255) Type 1 Units Only	26624-01	1	1			
	LIGHTED SWITCH (APU255) Type 2 Units Only	26665-01	1	1			
25	POWER NOZZLE CORD (APU255) Type 1 Units Only	09-26588-51	1	1			
	POWER NOZZLE CORD (APU255) Type 2 Units Only	09-26588-52	1	1			
26	REAR WHEEL AXLE (APU255)	26553-01	2	1			
27	ELBOW RING	26506-01-0327	1	1			
28	BRUSH ROLL (APU255)	26540-02	1	1			
29	MOTOR CLAMP (APU255)	26626-01	1	1			
31	HANDLE GRIP LOWER	26563-01-0327	1	1			
32	HANDLE GRIP UPPER	26562-01-0327	1	1			
33	HANDLE TUBE	26560-53-0327	1	1			
34	HANDLE TUBE PIN	52033P1	1	1			
36	GLAMOUR CAP	05453-0075	1	1			
37	LEAD W/TERMINAL (APU255) Type 1 Units Only	26844-01	1	1			
	LEAD W/TERMINAL (APU255) Type 2 Units Only	26844-02	2	1			
38	LEAD (APU255) Type 1 Units Only	26845-01	1	1			
39	SLEEVING (APU255)	37651P8	1	1			
40	BAG COVER	26670-02-0327	1	1			

Part Numbers Listing: APU255 & BR225

#	Item	Order #	Qty.	Pk.			
41	PLENUM	26673-02-0327	1	1			
43	APU255: RIGHT HOUSING AND MOTOR ASSEMBLY BR225: RIGHT HOUSING AND MOTOR ASSEMBLY	09-26864-01 09-26868-01	1 1	1 1			
44	WHEEL, SOLID	24467-04-0327	4	1			
45	MOTOR KIT	26876-01	1	1			
46	MOTOR BULK HEAD	26513-01	1	1			
47	MOTOR DISK	26663-02	1	1			
48	CUP WASHER	03-00422-01	1	1			
49	FAN	25561-01	1	1			
50	MOTOR HOUSING, MOUNT	09-26884-01	1	1			
54	GASKET, POWER NOZZLE (APU255)	78084-01	2	1			



Parts Diagram