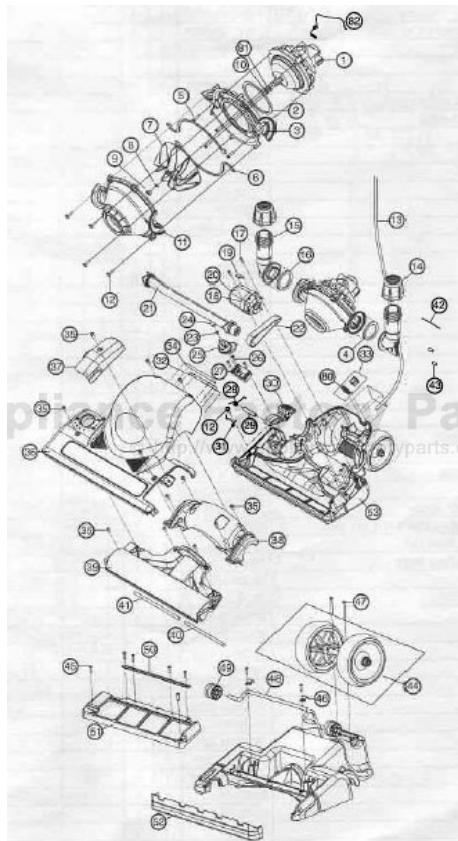


This Owner's Manual is provided and hosted by [Appliance Factory Parts](#).



# Oreck DS1700HY Owner's Manual

[Shop genuine replacement parts for Oreck DS1700HY](#)



[Find Your Oreck Vacuum Cleaner Parts - Select From 249 Models](#)

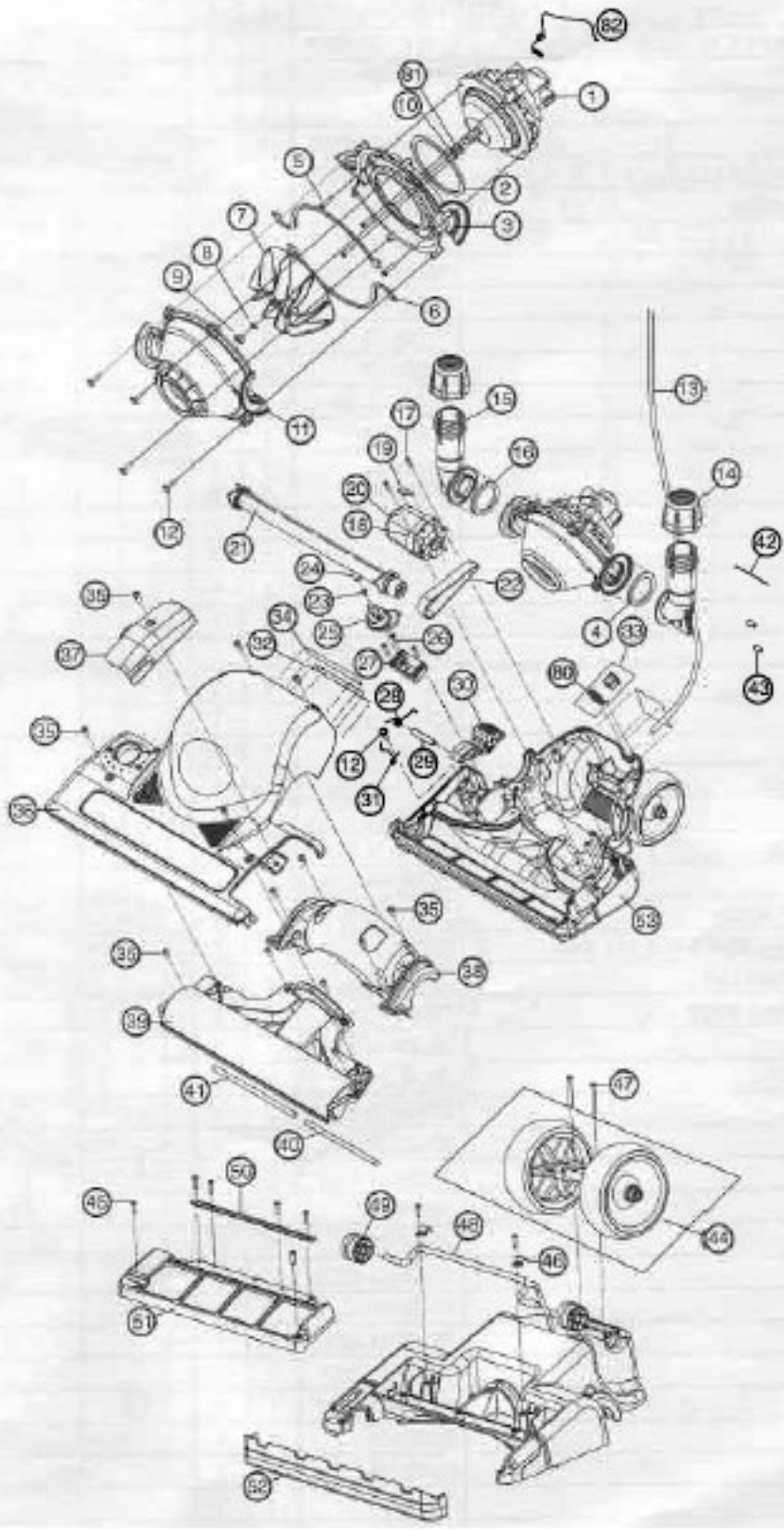
----- Manual continues below part list -----

## Available Replacement Parts for Oreck DS1700HY

[OR-1000](#)

BELT, FLAT, UPRIGHTS, 1PK

# Parts Diagram: DS1700HY



## Part Numbers Listing: DS1700HY

#	Item	Order #	Qty.	Pk.			
1	Fan Motor - Includes #1, #2, #4 & #6)	09-78148-01	1	1			
2	Motor Cap Gasket	78000-01	1	1			
3	Rear Scroll Housing - (Order #4 & #6 also)	78147-02-0327	1	1			
4	Scroll Liner Ring	78107-01	2	1			
6	Scroll Inner Gasket	78006-01	1	1			
7	Fan	78149-01-0000	1	1			
11	Forward Scroll Housing - (Order #4 also)	78146-02-0327	1	1			
13	Harness, 3 Conductor w/ Terminal	78153-01-327	1	1			
14	Pivot Collar	78018-01-0327	2	1			
15	Pivot Assembly	78019-03-0327	2	1			
16	Pivot Gasket	78011-01	2	1			
18	Motor Seal	75095-01	2	1			
19	Gasket, 1.0 x .5 x 1.88	78084-01	1	1			
20	Roller Brush Motor	09-78005-01	1	1			
21	Brush Roll Assembly	78029-01	1	1			
22	Brush Belt, Single Brush Bel, 3 Pack	75024-01 0300604	1 1	1 3			
24	Glamour Cap	78109-01	1	1			
25	CHA Knob	78100-01-0327	1	1			
27	Detent Cap	09-78099-51	1	1			
28	Detent Spring	03-00506-01	1	1			
29	Detent Axle	03-00505-01	1	1			
30	Detent Pedal	78093-01-0327	1	1			
31	CHA Spring	03-00515-02	1	1			
32	Label, TCO Reset	78114-01	1	1			
33	Kit, Plug & Square Strain Relief	78131-01	1	1			
34	Servicing Label	78103-01	1	1			
36	Top Cover Assembly w/Labels	09-78176-01	1	1			
37	Belt Door	78075-01-0384	1	1			
38	Cover, Inner-Base, Rear, 16" Nozzle	78072-01-0384	1	1			
39	Front Inner-Cover Assembly - (Order #40 & #41 also)	09-78156-51	1	1			
40	Gasket, Inner-Base Cover, Front Left	78055-01	1	1			
41	Gasket, Inner-Base Cover, Front Right	78056-01	1	1			
42	Cable Tie	03-00404-01	1	1			
44	Rear Wheel Assembly	09-78113-52	1	1			
46	Axle Clamp	03-00510-01	2	1			
48	CHA Axle	03-00509-01	1	1			
49	Front Wheel	78101-01-0327	2	1			
50	Micro Sweep Blade	78076-02	1	1			
51	Skid Plate, 16" Nozzle	78037-02	1	1			
52	Bumper 16" Nozzle	78034-01-0329	1	1			
53	Baseplate Assembly, 16"	09-78150-01	1	1			
54	Handle, Right	78165-01-0327	1	1			
56	Cord, 3 Conductor	78159-01-327	1	1			
57	Handle, Left	78166-01-0327	1	1			
59	Switch	75559-01	1	1			
60	Cord Dump & Post Assembly	09-75185-01	3	1			
61	Handle Tube	78028-01	1	1			
62	Plenum Latch Assemblymbi-	09-75185-01	3	1			
63	Gasket, Tube / Wheel	78028-01	1	1			



## Part Numbers Listing: DS1700HY

#	Item	Order #	Qty.	Pk.			
54	Handle, Right	78165-01-0327	1	1			
56	Cord, 3 Conductor	78159-01-327	1	1			
57	Handle, Left	78166-01-0327	1	1			
59	Switch	75531-01	1	1			
60	Cord Dump & Post Assembly	09-75185-01	3	1			
61	Handle Tube	78028-01	1	1			
62	Plenum Latch Assembly	09-78071-52	1	1			
63	Gasket, Tube / Plenum	78033-01	2	1			
65	Inner Filter Bag	DSPK25DW	25	1			
66	Clamp-Pipe, Top, Upper, Red - (Order #69 also)	78022-02-441	1	1			
67	Outer Bag	78175-01	1	1			
68	Inner Bag Support	78136-01-0000	1	1			
69	Clamp-Pipe, Top, Lower - Red	78023-01-441	1	1			
70	Exhaust Tube Seal	78095-01-0327	2	1			
71	Exhaust Pipe - (Order #74 & #75 also)	78030-01	2	1			
72	Clamp, Pipe, Bottom, Upper	78024-02-441	1	1			
73	Clamp, Pipe, Bottom, Lower	78025-02-441	1	1			
74	Tube Label	78090-01	1	1			
75	Felt Seal, 4.725 x 1.1 x .10	78164-01	2	1			
77	Ground Wire	78110-01	1	1			
79	Handle Assembly - (Includes #43 & #54-81)	09-78158-51	1	1			
80	Plug, Strain Relief	78121-02-0327	1	1			
	50' Extension Cord	COMMCORD50	1	1			
	Collar Tool (Optional Accessory)	78128-01	1	1			

## Standard Fastener and Hardware Listing: DS1700HY

#	PART DESCRIPTION	FASTENER PART NO.	FASTENER DESCRIPTION	QTY REQ'D	TORQUE RANGE (in•lb)	QTY PER PKG.		
5	Rear Scroll Housing	03-00586-01M	#8-18 x 3/4"	4	13 - 16	100		
8	Fan Washer	03-00480-01M	External Tooth Washer	1	--	100		
9	Fan Nut	03-00448-01M	1/4" - 32 (Left Hand)	1	40 - 45	100		
10	Washer	03-00597-01M	"Double D" Flat Washer	1	--	100		
12	Front Scroll Housing/CHA	03-00451-01M	#8 x 3/4" w/ Washer	4/1	13 - 16	100		
23	Shoulder Bolt	03-00508-01M	#10 - 32	1	13 - 16	100		
26	Detent Cap	03-00518-01M	#8 x 1 Pll 30 Flat	4	13 - 16	100		
35	Insert Screw	03-00519-02M	#10 - 24 x .5 Machine	13	13 - 16	100		
43	Wire Nut	03-00599-01M	Wire Nut	2	35 - 45	100		
45	CHA Axle / Skidplate	03-00413-23M	#6 - 11 x 9/16"	2/5	11 - 13	100		
47	Rear Wheel Axle	03-00402-01M	#8 - 10 x 1.5 Pll 30	2	13 - 16	100		
55	Steel Bushing Ring	03-00598-01M		2		100		
58	D Handle	03-00476-01M	#8 - 6 x 3/4"	7	13 - 16	100		
64	Clamps	03754M	#8 x .88	12	13 - 16	100		
76	Nut Plate	03-00516-01M	#8 - 32	1	8 - 12	100		
78	Nut Plate	03-00517-01M	#8 - 32 x 1.625"	2	8 - 12	100		