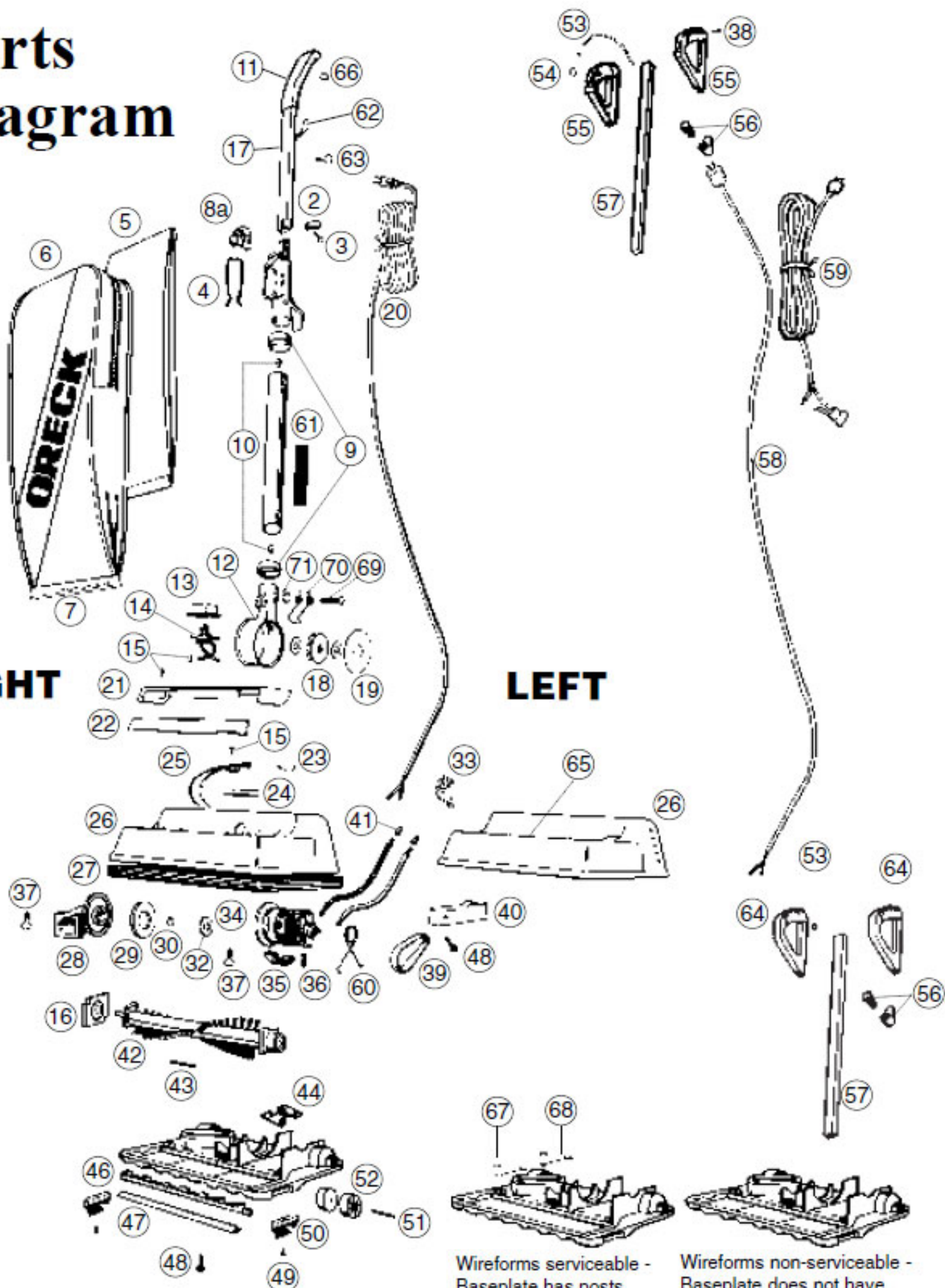


Parts Diagram

RIGHT

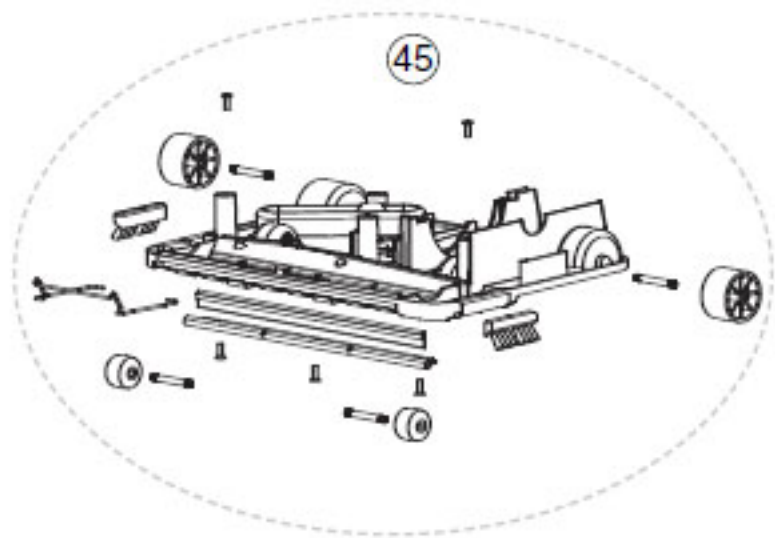
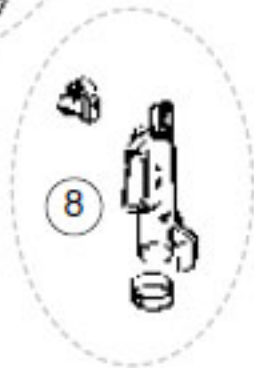
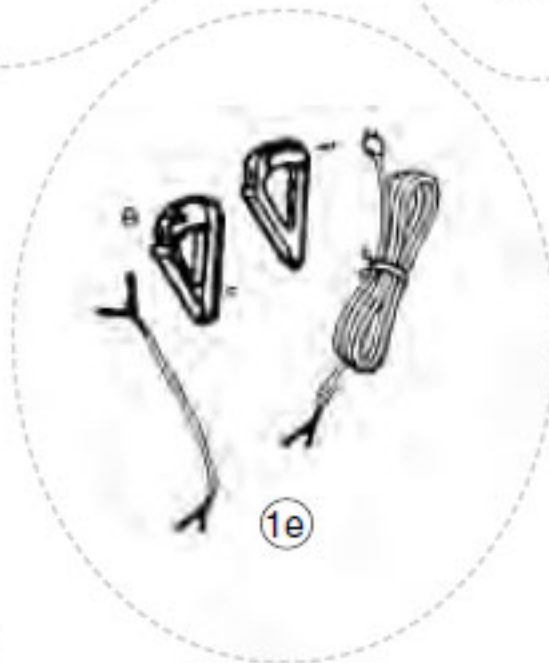
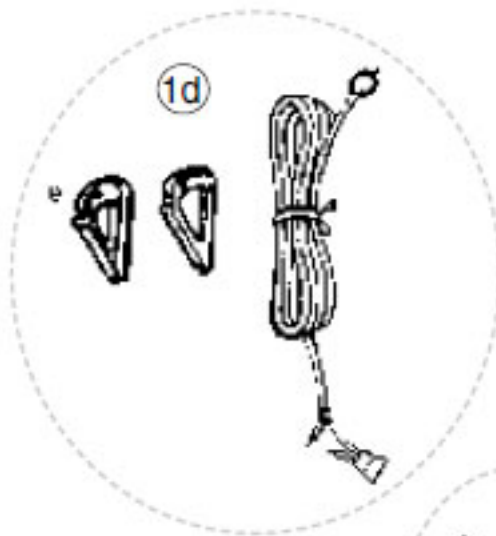
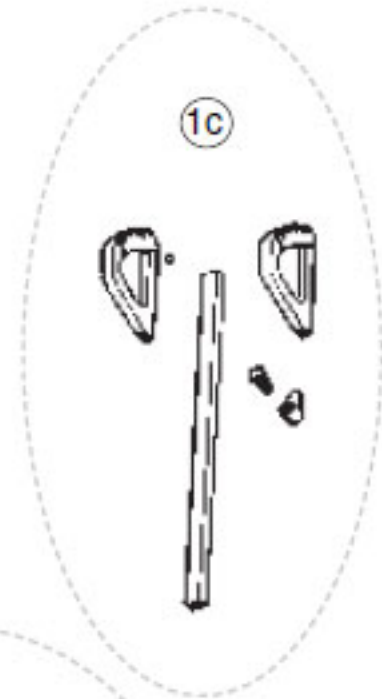
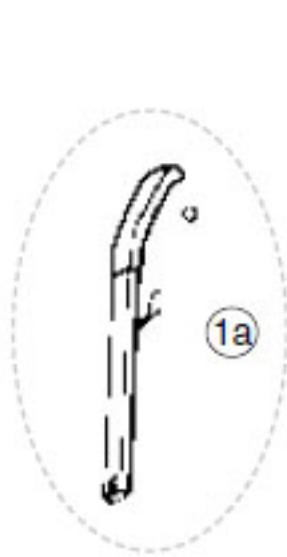
LEFT



Wireforms serviceable -
Baseplate has posts

Wireforms non-serviceable -
Baseplate does not have
posts

Parts Assemblies



Part Numbers Listing: XL9100HG

Hypo Bag, Lights, and Helping Hand Handle

#	Item	Order #	Qty.	Pk.			
1b	Handle Assembly, <i>includes items #38, #53, #54, #55, #56, #57, #59</i>	09-75296-02	1	1			
1d	Grip & Cord Assembly <i>includes: #54, #55, #59</i>	09-75342-01	1	1	NLA	NLA	NLA
1e	Kit, Retro, Handle Assembly, Residential, White	09-75612-01	1	1			
4	Bag Retainer Spring	75035-02	1	1			
6	Outer Bag, Dark Gray, Black, Dark Gray	75246-11	1	1			
7	Bag Clip, Blue Gray	09-75078-02	1	1			
8	Connector Assembly w/Deflector & Collar	0152657	1	1			
8a	Deflector, Black	75220-01-0327	1	1			
9	Collar	0132513	2	1			
10	Tube Assembly w/Seal & Clips	75017-01	1	1			
12	Fan Housing Assembly <i>includes: Rivet & Spring</i>	09-75233-01	1	1			
16	End Cap, Left	0134623	1	1			
18	METAXALLOY™ Fan Kit w/Washers	09-75300-01	1	1			
19	Fan Seal Cup	75012-01	1	1			
20	Cord Set	see #59					
21	Lamp Housing w/Reflectors, Blue Gray	09-75073-03	1	1			
22	Lens	75058-01-0329	1	1			
23	Bulb	00965-0019	2	1			
24	Bulb Reflector	75034-01	4	1			
25	Lamp Holder	75539-01	1	1			
26	Housing w/Reflectors, Blue Gray when replacing on unit w/o belt door order #40 & #48 also	09-75240-03	1	1			
27	Bumper, White	75181-03	1	1			
28	Intake Pivot Assembly <i>with Felt Seal</i>	09-75066-02	1	1			
29	Felt Seal	75065-01	1	1			
32	Felt Seal, Motor	75117-01M	1	100			
33	Cord Retainer, Round	03-00455-01	1	1			
34	Motor Assembly Kit	09-75535-01	1	1			
35	Motor Seal	75095-01	2	1			
36	Kit, Motor Brush (Large & Small) / Spring	09-75514-01	2	2			
39	Drive Belt, (3 Pk.)	0300604	1	3			
39a	Drive Belt, Single	75024-01	1	1			
40	Door (Belt), Blue Gray	75057-01-0434	1	1			
42	Brush Roll, Plastic Pulley	75202-01	1	1			
43	Seal, Baseplate	75008-01	1	1			
44	Spring Detent	75036-01	1	1			
45	Complete Baseplate Assembly, order #44 also	09-75715-01	1	1			

