

## Troubleshooting Guide



**CAUTION:** Always disconnect power cord before servicing vacuum.

**WARNING:** Repairs should only be performed by an authorized service center.

### Problem: Loss of Vacuum

#### Cause:

1. Damaged lid.
2. Full paper filter bag.
3. Clogged hose or wand.

#### Solution:

1. Inspect and replace if needed.
2. Replace paper filter bag.
3. Remove obstruction.

### Problem: Dust blowing from vacuum when running.

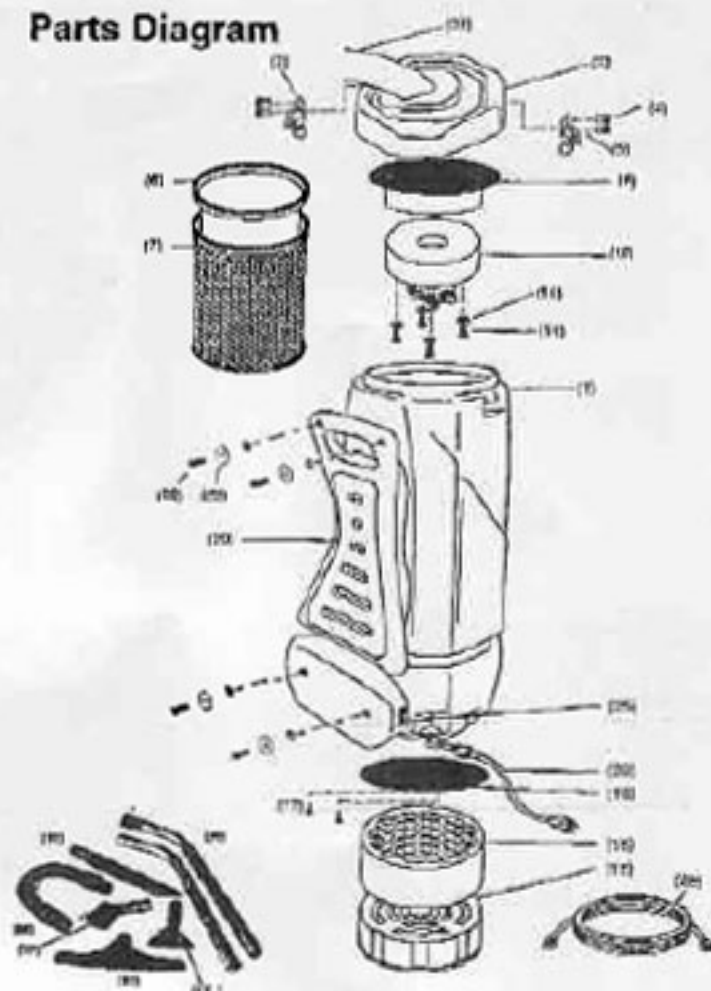
#### Cause:

1. Full paper filter bag.
2. Improperly installed paper filter filter bag.

#### Solution:

1. Replace filter bag.
2. Reinstall or replace paper filter filter bag.

## Parts Diagram



When ordering parts, please be sure to have your model and serial number from data plate.

## XLPRO6A & XLPRO6Z Parts Listing

Item #	Part #	Description
1	10-0001-6-O	6 Qt Body
2	10-0002-6-O	6 Qt Lid
6	PK25PRO6DW	6 Qt Paper Bag, 25 Pk
7	10-0496	6 Qt Cloth Bag
8	10-0008-A	Complete Dome Filter
12	10-0012	Motor
14	10-0014	Screws, Motor
15	10-0015	Washers, Motor
16	10-0016	Motor Deflector Plate
17	10-0017	Screw, Motor Deflector
18	10-0018	Sound Filter Band
19	10-0019	Dust Cell Noise Filter
20	10-0020	Cushioned Back Pad
21	10-0021	Waist Belt (Not Shown)
22	10-0022	Screw, Waist Belt
23	10-0023	Washer, Waist Belt
25	10-0025	On/Off Switch
28	10-0026-A	Power Cord, 17'
29	DSCORD50	50' Electrical Cord

## Accessories

Item #	Part #	Description
29	10-0029	2 Pc Aluminum Wand
31	10-0031	5" Upholstery Tool
32	10-0032	14" Scalloped Floor Tool
33	10-0033	17" Crevice Tool
36	10-0036	Stretch Hose w/Cuffs
37	10-0037	3" Dust Brush

## XLPRO10A Parts Listing

Item #	Part #	Description
1	10-0001-O	10 Qt Body
2	10-0002-O	10 Qt Lid, Complete
3	10-0003	Lid Latch
4	10-0004	Lid Rivet
6	PK25PHO10OW	10 Qt Paper Bag, 25 Pk
7	10-0007-A	10 Qt Cloth Bag
8	10-0008-A	Complete Dome Filter
12	10-0012	Motor
14	10-0014	Screws, Motor
15	10-0015	Washers, Motor
16	10-0016	Motor Deflector Plate
17	10-0017	Screw, Motor Deflector
18	10-0018	Sound Filter Band
19	10-0019	Dust Cell Noise Filter
20	10-0020	Cushioned Back Pad
21	10-0021	Waist Belt (Not Shown)
22	10-0022	Screw, Waist Belt
23	10-0023	Washer, Waist Belt
25	10-0025	On/Off Switch
28	10-0026-A	Power Cord, 17'
29	DSCORD50	50' Electrical Cord

## Accessories

Item #	Part #	Description
29	10-0029	2 Pc Aluminum Wand
31	10-0031	5" Upholstery Tool
32	10-0032	14" Scalloped Floor Tool
33	10-0033	17" Crevice Tool
36	10-0036	Stretch Hose w/Cuffs
37	10-0037	3" Dust Brush