

Troubleshooting Guide



CAUTION: Always disconnect power cord before servicing vacuum.

WARNING: Repairs should only be performed by an authorized service center.

Problem: Loss of Vacuum

Cause:

1. Damaged lid.
2. Full paper filter bag.
3. Clogged hose or wand.

Solution:

1. Inspect and replace if needed.
2. Replace paper filter bag.
3. Remove obstruction.

Problem: Dust blowing from vacuum when running.

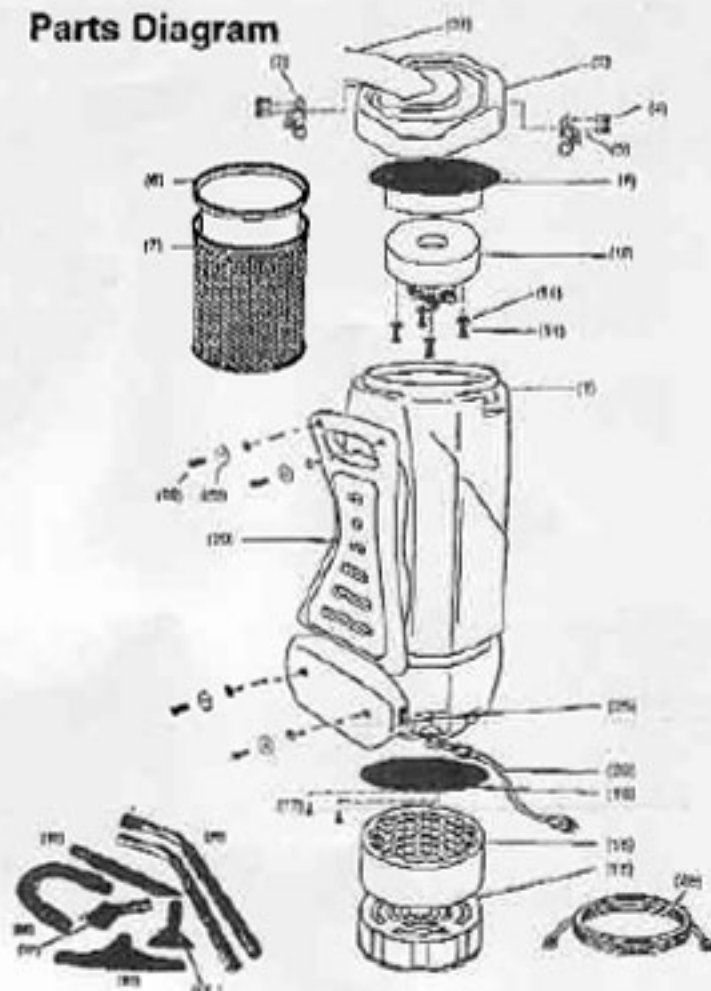
Cause:

1. Full paper filter bag.
2. Improperly installed paper filter filter bag.

Solution:

1. Replace filter bag.
2. Reinstall or replace paper filter filter bag.

Parts Diagram



When ordering parts, please be sure to have your model and serial number from data plate.

XLPRO6A & XLPRO6Z Parts Listing

| Item # | Part # | Description |
|--------|-------------|------------------------|
| 1 | 10-0001-6-O | 6 Qt Body |
| 2 | 10-0002-6-O | 6 Qt Lid |
| 6 | PK25PRO6DW | 6 Qt Paper Bag, 25 Pk |
| 7 | 10-0496 | 6 Qt Cloth Bag |
| 8 | 10-0008-A | Complete Dome Filter |
| 12 | 10-0012 | Motor |
| 14 | 10-0014 | Screws, Motor |
| 15 | 10-0015 | Washers, Motor |
| 16 | 10-0016 | Motor Deflector Plate |
| 17 | 10-0017 | Screw, Motor Deflector |
| 18 | 10-0018 | Sound Filter Band |
| 19 | 10-0019 | Dust Cell Noise Filter |
| 20 | 10-0020 | Cushioned Back Pad |
| 21 | 10-0021 | Waist Belt (Not Shown) |
| 22 | 10-0022 | Screw, Waist Belt |
| 23 | 10-0023 | Washer, Waist Belt |
| 25 | 10-0025 | On/Off Switch |
| 28 | 10-0026-A | Power Cord, 17' |
| 29 | DSCORD50 | 50' Electrical Cord |

Accessories

| Item # | Part # | Description |
|--------|---------|--------------------------|
| 29 | 10-0029 | 2 Pc Aluminum Wand |
| 31 | 10-0031 | 5" Upholstery Tool |
| 32 | 10-0032 | 14" Scalloped Floor Tool |
| 33 | 10-0033 | 17" Crevice Tool |
| 36 | 10-0036 | Stretch Hose w/Cuffs |
| 37 | 10-0037 | 3" Dust Brush |

XLPRO10A Parts Listing

| Item # | Part # | Description |
|--------|-------------|------------------------|
| 1 | 10-0001-O | 10 Qt Body |
| 2 | 10-0002-O | 10 Qt Lid, Complete |
| 3 | 10-0003 | Lid Latch |
| 4 | 10-0004 | Lid Rivet |
| 6 | PK25PHO10OW | 10 Qt Paper Bag, 25 Pk |
| 7 | 10-0007-A | 10 Qt Cloth Bag |
| 8 | 10-0008-A | Complete Dome Filter |
| 12 | 10-0012 | Motor |
| 14 | 10-0014 | Screws, Motor |
| 15 | 10-0015 | Washers, Motor |
| 16 | 10-0016 | Motor Deflector Plate |
| 17 | 10-0017 | Screw, Motor Deflector |
| 18 | 10-0018 | Sound Filter Band |
| 19 | 10-0019 | Dust Cell Noise Filter |
| 20 | 10-0020 | Cushioned Back Pad |
| 21 | 10-0021 | Waist Belt (Not Shown) |
| 22 | 10-0022 | Screw, Waist Belt |
| 23 | 10-0023 | Washer, Waist Belt |
| 25 | 10-0025 | On/Off Switch |
| 28 | 10-0026-A | Power Cord, 17' |
| 29 | DSCORD50 | 50' Electrical Cord |

Accessories

| Item # | Part # | Description |
|--------|---------|--------------------------|
| 29 | 10-0029 | 2 Pc Aluminum Wand |
| 31 | 10-0031 | 5" Upholstery Tool |
| 32 | 10-0032 | 14" Scalloped Floor Tool |
| 33 | 10-0033 | 17" Crevice Tool |
| 36 | 10-0036 | Stretch Hose w/Cuffs |
| 37 | 10-0037 | 3" Dust Brush |