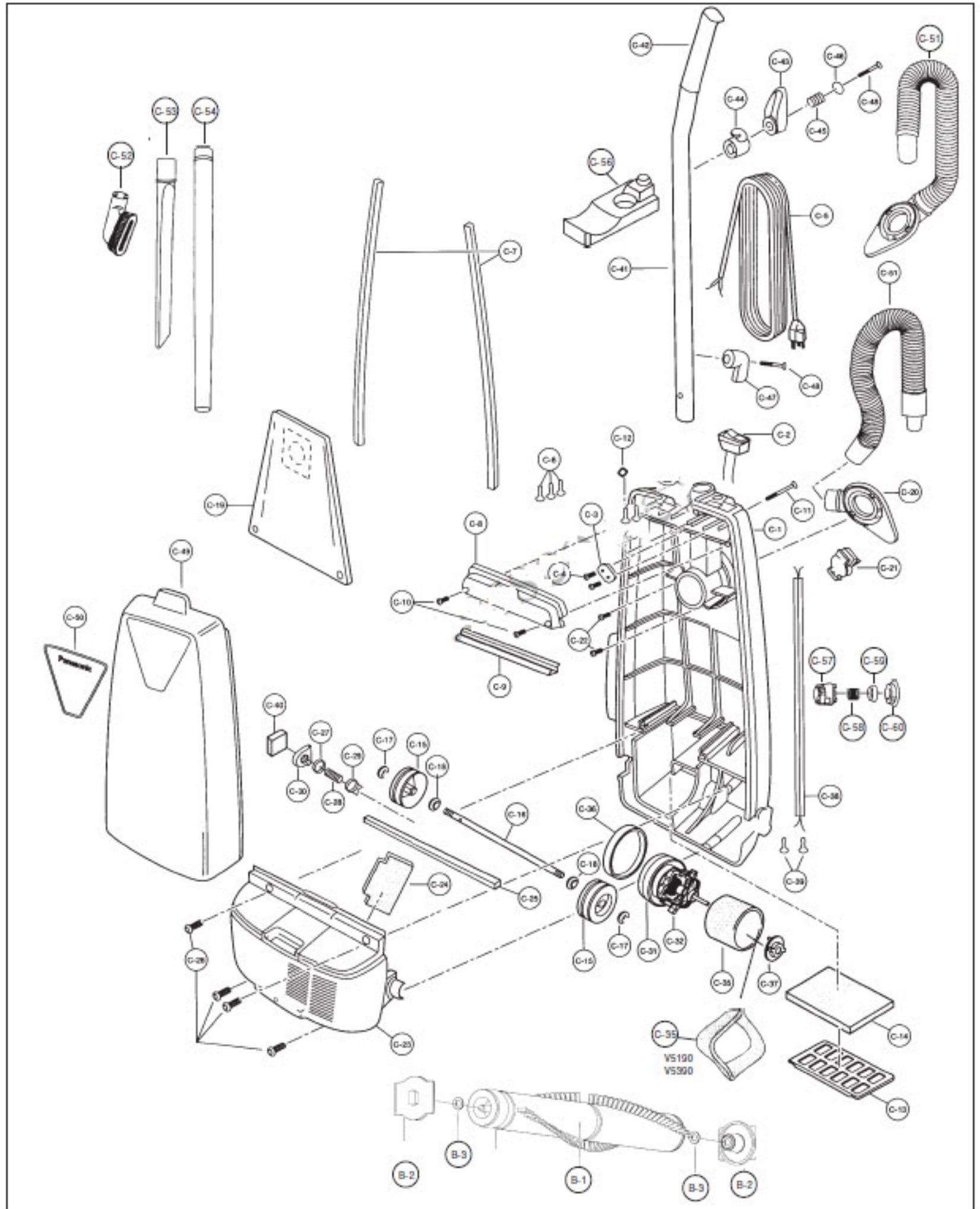


PANASONIC

Original & Replacement

Models 5190, V5190, V5390



Original & Replacement

PANASONIC

Models 5190, V5190, V5390

PARTS LIST (DUST COMPARTMENT HOUSING)

KEY	PART NO.	DESCRIPTION
C-1	P-75227	Dust Compartment Ass'y 5190
C-1	P-75247	Dust Compartment Ass'y V5190
C-1	P-75251	Dust Compartment Ass'y V5390
C-2	P-34100	On/Off Switch
C-3	P-62E-J20	Cord Stopper
C-4	P-77020	Screw
C-5	NLA	Power Cord 5190, V5190
C-5	NLA	Power Cord V5390
C-7	P-66KV01KU12	Dust Container Packing 5190
C-7	P-66KVO1V006	Dust Container Packing V5190, V5390
C-8	P-03EV02RU09	Switch Cover 5190
C-8	P-03EV04V006	Switch Cover V5190, V5390
C-9	P-73KV0ZKU13	Switch Cover Packing 5190
C-9	P-73KV0ZV006	Switch Cover Packing V5190, V5390
C-10	P-77020	Screw
C-11	P-77043	Handle Screw
C-12	P-21B-170	Nut
C-13	P-18420	Filter Supporter
C-14	P-18400	Secondary Filter
C-15	P-71125	Roller
C-16	P-71350	Roller Shaft 5190
C-16	P-71375	Roller Shaft V5190, V5390
C-17	P-77115	E-Clip 5190
C-17	P-71500	Wheel Stopper V5190, V5390
C-18	P-XWG6E115FY	Washer
C-19	P-MC115P	Paper Bag 3 Pk
C-20	P-75623	Suction Inlet 5190
C-20	P-60HJPV006	Suction Inlet V5190, V5390
C-21	P-75610	Cover 5190
C-21	P-75612	Cover V5190, V5390
C-22	P-77020	Screw
C-23	P-75015	Motor Case 5190
C-23	P-75030	Motor Case V5190
C-23	P-75032	Motor Case V5390
C-24	P-76850	Rear Cover Packing
C-25	P-19FV0ZKU13	Motor Case Packing 5190
C-25	P-19FVOZV006	Motor Case Packing V5190, V5390
C-26	P-77020	Screw
C-27	P-50521	Protector 5190
C-28	P-76865	Protector Spring 5190
C-29	P-68K-D20	Protector Case 5190

PARTS LIST (NOZZLE HOUSING)

A-1	P-73042	Nozzle Housing 5190
A-1	P-73043	Nozzle Housing V5190
A-1	P-73026	Nozzle Housing V5390
A-2	P-02TVW10U00	Top Mark 5190
A-2	P-02TAEHZ0U00	Top Mark V5190
A-2	P-02TAEJZ0U00	Top Mark V5390
A-3	P-73900	Plastic Shaft
A-4	P-73905	Plastic Holder
A-5	P-77020	Screw
A-6	P-77205	Pedal Spring
A-7	P-74018	Furniture Guard
A-8	P-76425	Body Packing
A-9	P-MC210B	Belt, 2 Pk
A-9	PR-1015	Belt, UB
A-10	P-76015	Lower Plate Ass'y
A-11	P-76032	Lower Plate
A-12	P-68AZAZ0000	Screw (Coin Head)
A-13	P-76740	Body Packing
A-14	P-76315	Belt Cover
A-15	NLA	Nozzle Hose, 5190
	P-72403	Nozzle Hose, V5100 Series

KEY	PART NO.	DESCRIPTION
C-30	P-50520	Protector Supporter 5190
C-31	P-60100	Motor Unit 5190
C-31	P-60105	Motor Unit V5190
C-31	P-60135	Motor Unit V5390
C-32	P-63050	Carbon Brush 5190
C-32	P-63054	Carbon Brush V5190
C-32	P-63056	Carbon Brush V5390
C-33	P-02D-V300U	Brush Retainer Bracket
C-34	P-40D-V300U	Screw (Brush)
C-35	P-18706	Noise Suppressor
C-36	P-76768	Motor Support Rubber (Front)
C-37	P-76769	Motor Support Rubber (Rear)
C-38	P-37G-V020U	Wire Cord
C-39	SS-3270	Wire Connector
C-40	P-33K-V000U	Protector Filter V5190
C-41	P-70124	Handle
C-42	P-50BV1ZR008	Handle Grip
C-43	NLA	Upper Cord Hook 5190
C-43	P-70818	Upper Cord Hook V5190, V5390
C-44	P-70909	Cord Storage Base 5190, V5390
C-44	P-70867	Cord Storage Base V5190
C-45	P-77200	Cord Hook Spring
C-46	P-70867	Washer
C-47	P-70909	Lower Cord Hook
C-48	P-70821A	Screw
C-49	P-7368 70818	Dust Cover 5190, V5190
C-49	P-7720 70909	Dust Cover V5390
C-47	P-70821A	Ornamental Plate 5190
C-51	P-21TAEHZ0U00	Ornamental Plate V5190
C-52	P-21TAEJZ0U00	Ornamental Plate V5390
C-51	NLA	Nozzle Hose, Stretch 5190
C-51	P-73632	Nozzle Hose, Molded V5190
C-51	P-73658	Nozzle Hose, Stretch V5390
C-52	P-53020	Dust Brush
C-53	P-60RZSZVU07	Crevice Tool 5190
C-53	P-54017	Crevice Tool V5190, V5390
C-54	P-50030	Wand 5190, V5190, V5390
C-54	FA-5005-3	Wand, Friction Fit
C-56	P-70500	Hose Holder V5190
C-57	P-75682	Protector Case V5190, V5390
C-58	P-70KAECZY000	Protector Spring V5190, V5390
C-59	P-50522	Protector V5190, V5390
C-60	P-50525	Protector Supporter V5190, V5390

PARTS LIST (AGITATOR)

B-1	P-20020	Agitator Unit
B-2	P-20525	End Cap "A"
B-3	P-681-424	Washer

