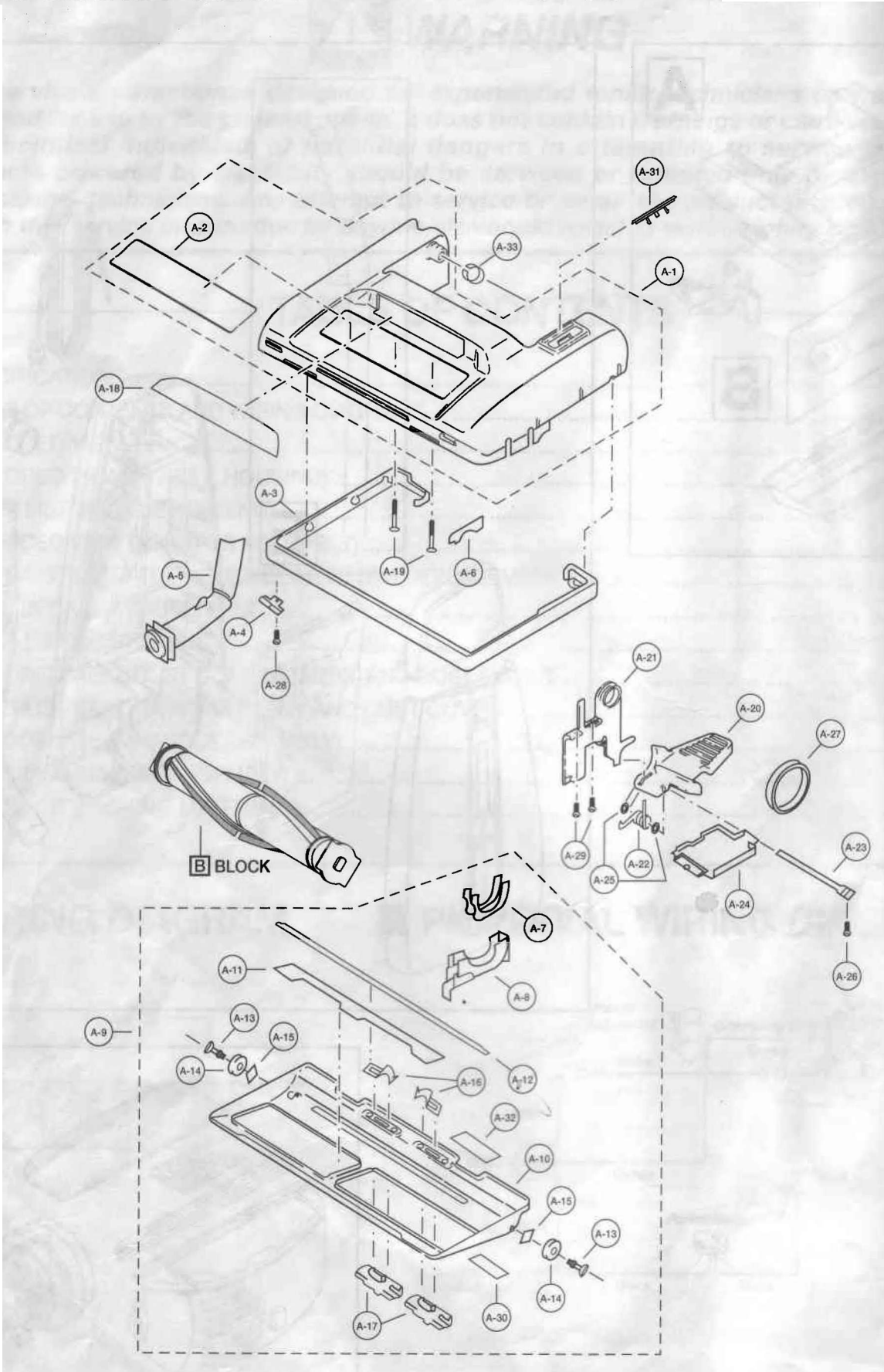


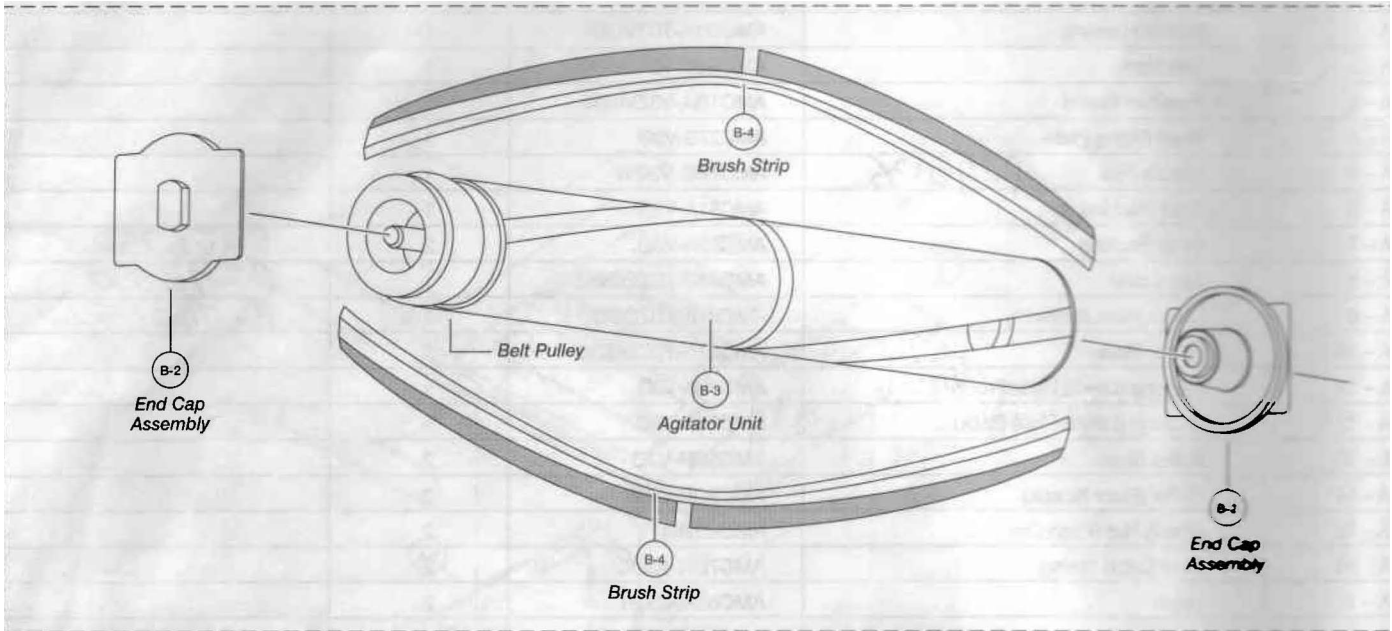
**EXPLODED VIEW (NOZZLE HOUSING)... [A] BLOCK**



# ■ PARTS LIST (NOZZLE HOUSING)... [A] BLOCK

| Ref. No. | Part Name & Description     | Part No.         | Quantity | Remarks        |
|----------|-----------------------------|------------------|----------|----------------|
| A - 1    | Nozzle Housing              | AMC01A-TD1VU07   | 1        |                |
| A - 2    | Top Mark                    | AMC02T-TD10U00   | 1        |                |
| A - 3    | Furniture Guard             | AMC10A-V3ZVU06   | 1        |                |
| A - 4    | Hose Fitting Plate          | AMC27S-V30       | 1        |                |
| A - 5    | Nozzle Pipe Q , "7 ° f \ %  | AMC70S-V30W      | 1        |                |
| A - 6    | Tight Packing               | AMC81A-V30       | 1        |                |
| A - 7    | Body Packing                | AMC75A-V30       |          | <i>lh J^o</i>  |
| A - 8    | Belt Cover                  | AMC43S-TDZ0000   | 1        | f - IU> 33<L-" |
| A - 9    | Lower Plate Assemblv        | AMC91A-TDZ0000   | 1        | <b>P-76041</b> |
| A - 10   | Lower Plate                 | AMC27A-TDZ0000   | 1        |                |
| A - 11   | Packing (Lower Plate Front) | AMC19A-V30       | 1        |                |
| A - 12   | Packing (Lower Plate Back)  | AMC74A-V30       | 1        |                |
| A - 13   | Roller Shaft                | AMC50R-V30       | 2        |                |
| A - 14   | Roller (Floor Nozzle)       | AMC9OR-C90       | 2        |                |
| A - 15   | Spring Nut (Push On)        | AMC-XNK4FY       | 2        |                |
| A - 16   | Stop Latch Spring           | AMC70N-V30       | 2        |                |
| A - 17   | Latch                       | AMC68N-V30R      | 2        |                |
| A - 18   | Window                      | AMC21H-1LZVU07   | 1        | <(-/LLz        |
| A - 19   | Screw (Nozzle Housing)      | AMC68A-V30       | 2        |                |
| A - 20   | Pedal                       | AMC47A-V30U      | 1        |                |
| A-21     | Frame                       | AMC43A-V30       | 1        |                |
| A-22     | Pedal (Spring)              | AMC58A-V30       | 1        |                |
| A-23     | Pedal Shaft                 | AMC51A-V30       | 1        |                |
| A - 24   | Rear Belt Cover             | AMC11S-V30W      | 1        |                |
| A - 25   | E-Clip                      | AMC-XUC4FY       |          |                |
| A - 26   | Screw (Pedal Shaft)         | AMC-XTN4+20BFY   | 1        |                |
| A - 27   | Flat Belt                   | AMC28S-AV0       | 1        |                |
| A - 28   | Screw (Hose Fitting Plate)  | AMC-XTN4+16BFY   | 1        |                |
| A - 29   | Screw (Frame)               | AMC-XTN4+20BFY   |          |                |
| A - 30   | Warning Label               | AMC08Z-V30       | 1        |                |
| A - 31   | Cover Plate V O             | AMC24A-TDZV007   | 1        |                |
| A - 32   | Caution Label               | AMC07Z -ADFZ0000 | 1        |                |
| A - 33   | Body Supporter              | AMC02C-1L0       | 1        |                |

## EXPLODED VIEW (AGITATOR ASSEMBLY)... B BLOCK



## PARTS LIST (AGITATOR ASSEMBLY)... B BLOCK

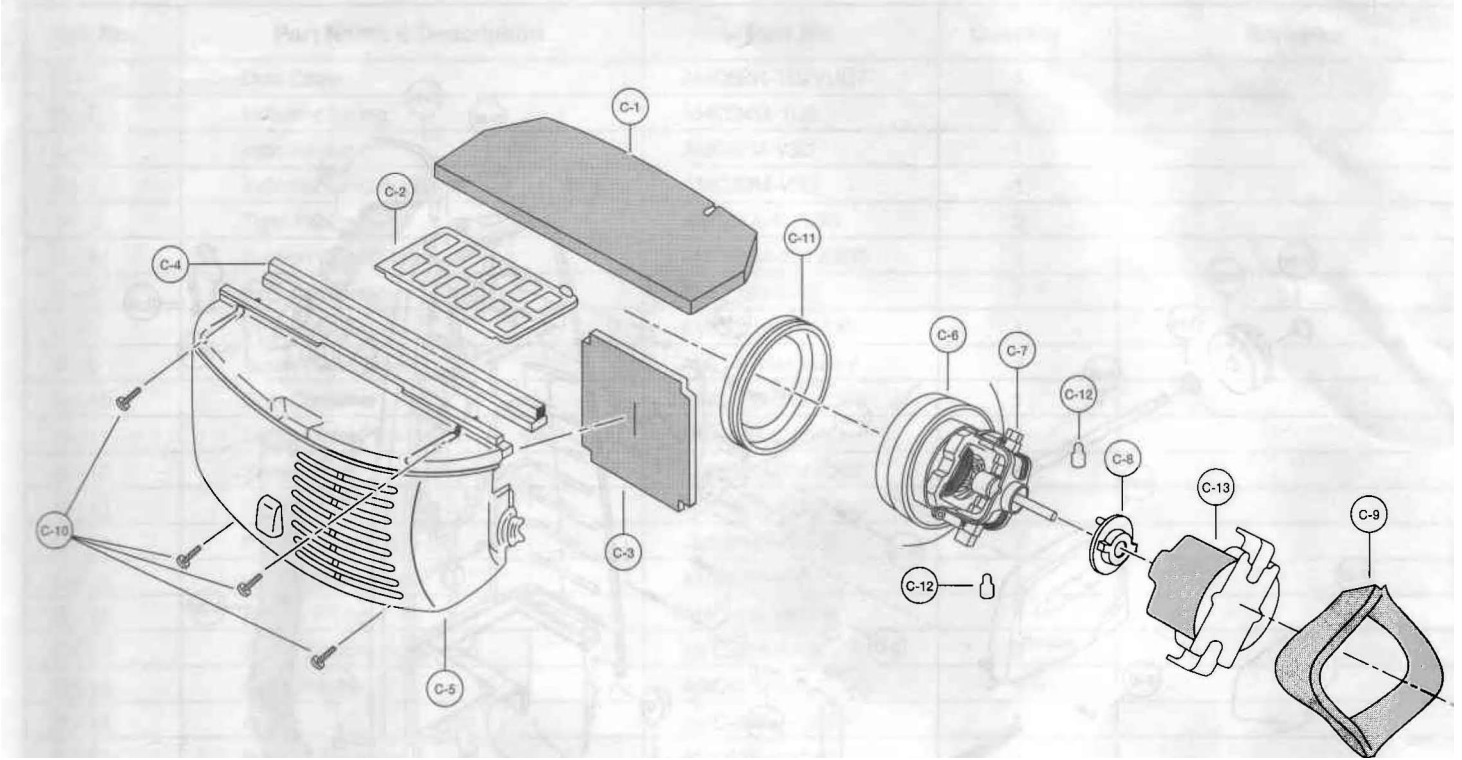
| Ref. No. | Part Name & Description                 | Part No.       | Quantity | Remarks |
|----------|---|----------------|----------|---------|
| B - 1    | Agitator Assembly (complete) .)? itJt X | AMC92S-TD10000 | 1        |         |
| B - 2    | End Cap Assembly *p- ^                  | AMC85C-TE10000 | 2        |         |
| B - 3    | Agitator Unit                           | AMC85R-TD10000 | 1        |         |
| B - 4    | Brush Strips %                          | AMC78R-TDZ0000 | 2        |         |

## PARTS LIST (FAN REPLACEMENT)

For detailed instruction see: Service Manual MFCC100593 (MC-6837)

| Ref. No. | Part Name & Description | Part No.       | Quantity | Remarks |
|----------|-------------------------|----------------|----------|---------|
| 1        | Fan Case                | AMC53F-AV00U   | 1        |         |
| 2        | Nut                     | AMC33F-AC00U   | 1        |         |
| 3        | Washer (a)              | AMC62F-AV00U   | 1        |         |
| 4        | Fan                     | AMC98F-RFZ0000 | 1        |         |
| 5        | Washer (b)              | AMC62F-RFZ0000 | 1        |         |
| 6        | Spacer                  | AMC60F-RFZ0000 | 1        |         |
| 7        | Brush Assembly          | AMC27F-REZ0000 | 1 (Set)  |         |
| 8        | Bracket                 | AMC02D-V300U   | 2        |         |
| 9        | Screws                  | AMC40D-V300U   | 2        |         |
| 10       | Motor Cover             | AMC93F-TEZ0U00 | 1        |         |

# EXPLODED VIEW (MOTOR UNIT)... C BLOCK

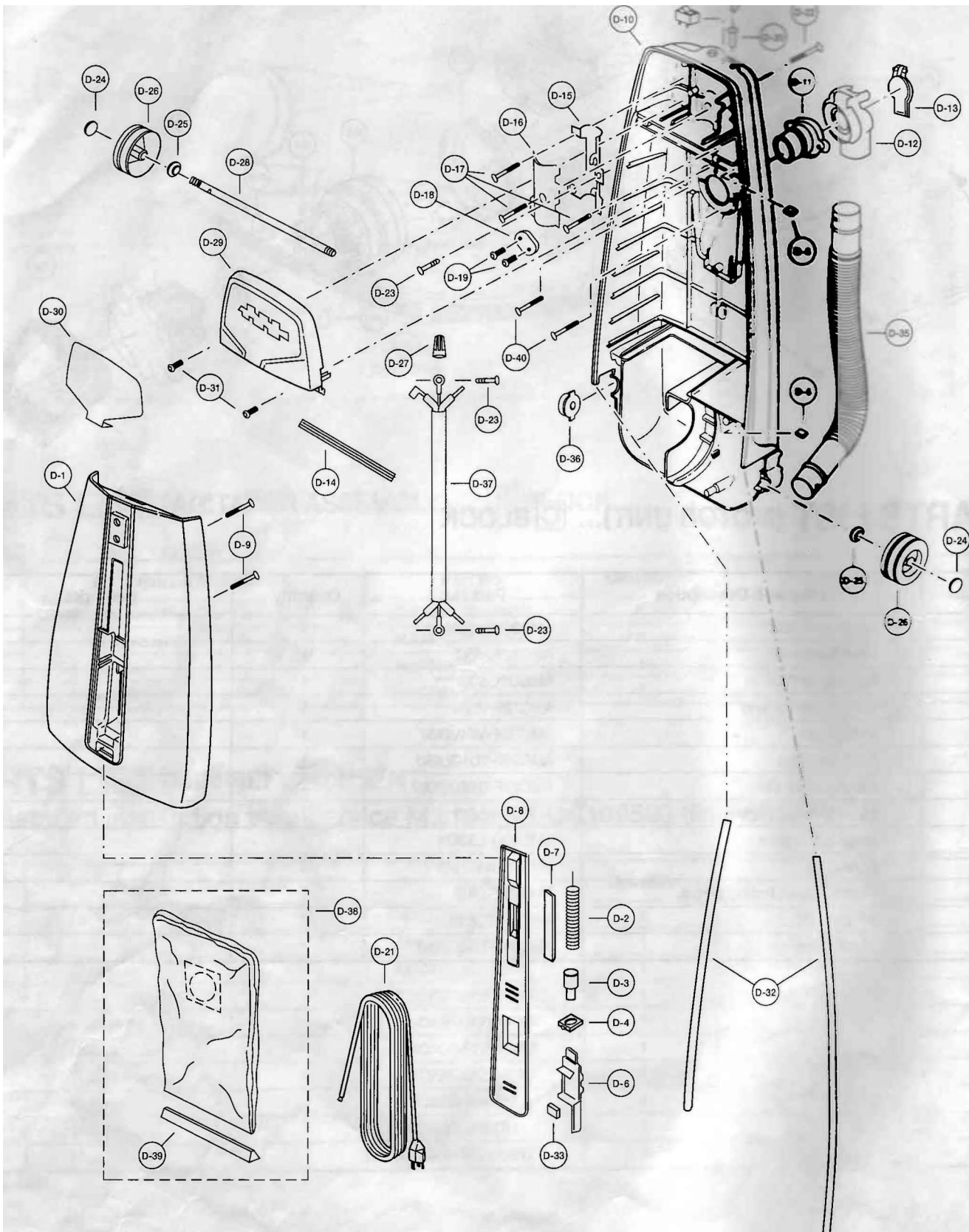


## PARTS LIST (MOTOR UNIT)... C BLOCK

| Ref. No. | Part Name & Description      | Part No.       | Quantity | Remarks |
|----------|------------------------------|----------------|----------|---------|
| C - 1    | Secondary Filter             | AMC30K-V30V    | 1        |         |
| C - 2    | Filter Supporter             | AMC32K-V00     | 1        |         |
| C - 3    | Rear Cover Packing           | AMC02L-V30     | 1        |         |
| C - 4    | Motor Case Packing           | AMC19F-V30J    | 1        |         |
| C - 5    | Motor Case                   | AMC09F-V34V007 | 1        |         |
| C - 6    | Fan Motor Unit               | AMC92F-TD10U00 | 1        |         |
| C - 7    | Carbon Brush (Set)           | AMC27F-REZ0000 | 1        | (Set)   |
| C - 8    | Motor Support Rubber (Rear)  | AMC03F-L00     | 1        |         |
| C - 9    | Noise Suppressor             | AMC99G-L300X   | 1        |         |
| C - 10   | Screw                        | AMC-XTN4+16BFY | 4        |         |
| C - 11   | Motor Support Rubber (Front) | AMC02F-D40     | 1        |         |
| C - 12   | Wire Nut                     | AMC-1CTCE23    | 2        |         |
| C - 13   | Motor Cover                  | AMC93F-TEZ0U00 | 1        |         |



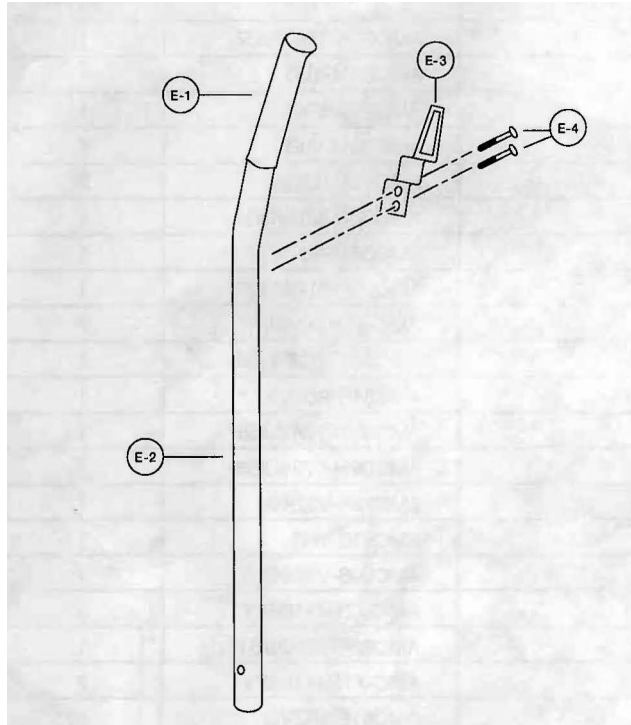
# EXPLODED VIEW (DUST COMPARTMENT AND DUST COVER)... BLOCK



# ■ PARTS LIST (DUST COMPARTMENT AND DUST COVER)... D BLOCK

| Ref. No.  | Part Name & Description                | Part No.           | Quantity | Remarks    |
|-----------|--|--------------------|----------|------------|
| D - 1     | Dust Cover                             | AMC60K-TDZVU07     | 1        |            |
| D - 2     | Indicator Spring                       | AMC04M-1L0         | 1        |            |
| D - 3     | Indicator Lead                         | AMC97M-V30         | 1        |            |
| D - 4     | Indicator Lead Supporter               | AMC20M-V30         | 1        |            |
| D - 5     | Tight Packing                          | AMC81A-1L000       |          |            |
| D - 6     | Suction Control Lever                  | AMC06M-V31V007     | 1        |            |
| D - 7     | Indicator Window                       | AMC08M-V30         | 1        |            |
| D - 8     | Front Cover                            | AMC01H-TD1VU07     | 1        |            |
| D - 9     | Screw (Dust Cover)                     | AMC-XTN4+16BFY     |          |            |
| D - 10    | Dust Container                         | AMC40K-TDZVU06 i / | 1        |            |
| D - 11    | Suction Inlet Packing                  | AMC64H-9G00U       | 1        |            |
| 0-12      | Suction Inlet                          | AMC60H-F74VU06     | 1        |            |
| D - 13    | Cover                                  | AMC02H-F73VU06     | 1        |            |
| D - 14    | Packing (Switch Cover)                 | AMC73K-V3ZK0       | 1        |            |
| D - 15    | Handle Supporter                       | AMC53B-1L0         | i        |            |
| D - 16    | Handle Fitting                         | AMC69B-V3Z00       | 1        |            |
| D - 17    | Screw (Handle Supporter)               | AMC-XTN4+16BFY     |          |            |
| D - 18    | Cord Stopper                           | AMC62E-TEZU001     | 1        |            |
| 0-19      | Screw                                  | AMC-XTN4+16BFY     |          |            |
| D - 20    | Rubber Protector                       | AMC51E-4GZV0       | 1        |            |
| D - 21    | Power Cord                             | AMC94E-TDZVU00     | 1        |            |
| D - 22    | Handle Screw                           | AMC73B-V30         | 1        |            |
| D - 23    | Screw (Grounding) Motor Handle Fitting | AMC-XYN4+E8FFY     | 2        |            |
| D - 24    | Stopper, Wheel                         | AMC74S-USZ0000     | 2        |            |
| D - 25    | Washer                                 | AMC-XWG6E115FY     | 2        |            |
| D - 26 4, | Wheel << ? / t>(0 5                    | AMC01C-V0ZVU11     | 2        |            |
| D - 27    | Wire Nut                               | AMC-1CTCE23        | 1        |            |
| D - 28    | Roller Shaft                           | AMC16C-XVZ0000     | 1        |            |
| D-29      | Switch Cover                           | AMC03E-????????    | 1        |            |
| D - 30    | Ornamental Plate                       | AMC21T-TDZ0U00     | 1        |            |
| D - 31    | Screw                                  | AMC-XTN4+20BFY     | 2        |            |
| D - 32    | Packing (Dust Container)               | AMC66K-V30K        | 2        |            |
| D - 33    | Packing (Indicator)                    | AMC09M-V30         | 1        |            |
| D - 34    | Main Switch                            | AMC414-7938        | 1        |            |
| D - 35    | Nozzle Hose                            | AMC34P-TD1V006     |          | <i>P</i> - |
| D - 36    | Plastic Shaft                          | AMC25S-V31W        | 1        |            |
| D - 37    | Connection Cord                        | AMC64E-TDZVU00     | 1        |            |
| D-38      | Dust Bag Unit                          | AMC99K-V200A       | 1        |            |
| D-39      | Dust Bag Fastener                      | AMC23K-TEZW000     | 1        |            |
| D-40      | Screw (For Suction Inlet Packing)      | AMC-XTN4+16BFY     | 2        |            |

# EXPLODED VIEW (HANDLE ASSEMBLY)... E BLOCK



# PARTS LIST (HANDLE ASSEMBLY)... E BLOCK

| Ref. No. | Part Name & Description | Part No.       | Quantity | Remarks   |
|----------|-------------------------|----------------|----------|-----------|
| E - 1    | Handle Grip             | AMC50B-V1ZV006 | 1        |           |
| E - 2    | Handle (Includes Grip)  | AMC64B-TEZ0000 | 1        |           |
| E - 3    | Cord Hook               | AMC53E-TEZ0000 | 1        | V- 76Gt 9 |
| E - 4    | Screw                   | AMC680-775     | 2        |           |
| E - 5    | Sticker Warning         | AMC33Z-YRZ0K00 | 1        |           |