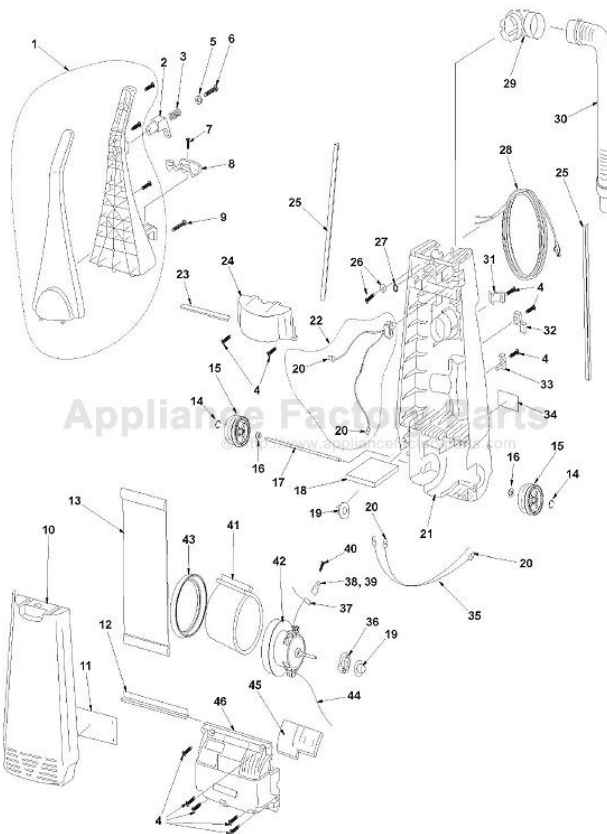


This Owner's Manual is provided and hosted by [Appliance Factory Parts](http://ApplianceFactoryParts.com).



PANASONIC MC-UG415 Owner's Manual

[Shop genuine replacement parts for PANASONIC
MC-UG415](#)



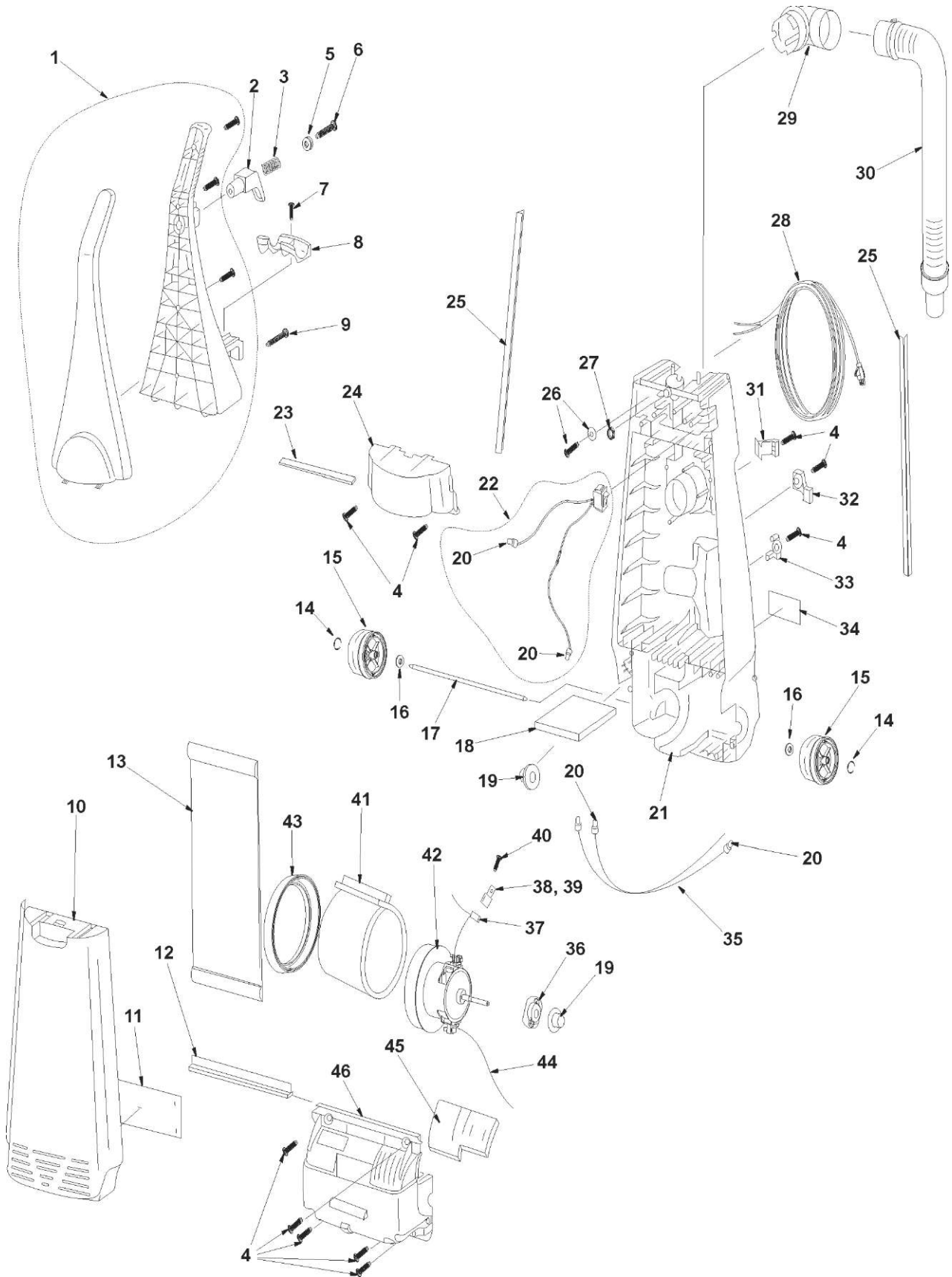
[Find Your PANASONIC Vacuum Cleaner Parts - Select From 605 Models](#)

----- Manual continues below -----

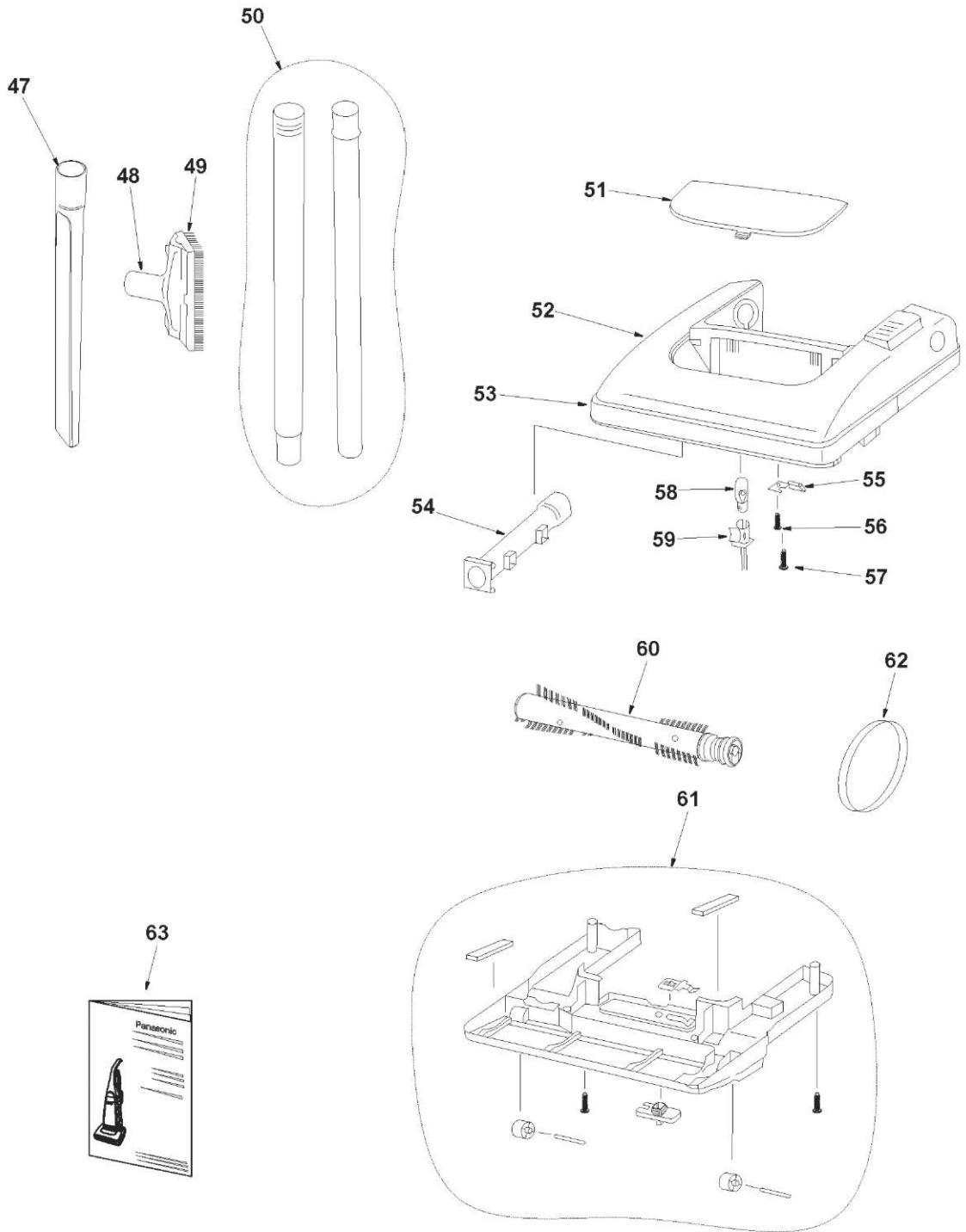
2 EXPLODED VIEW AND PARTS LIST

2.1. Body and Nozzle

2.1.1. Exploded View - Body



2.1.2. Exploded View - Nozzle



2.1.3. Parts List

Ref. No.	Part No.	Part Name & Description	Quantity	Remarks
1	AC95BDRJZC0L	Handle Assembly	1	
2	AC53EDRHZU03	Cord Hook	1	
3	AC57ADRHZ 000	Helical Spring B	1	
4	AC4 0DDRHZ 007	SCR TPG PAN 4X20	10	
5	AC62FDRHZ00Z	Washer Z 4x12x0.8	1	
6	AC4 0DDRHZ 001	Screw (4x33)	1	
7	AC4 0DDRHZ 002	Screw (4x16)	1	
8	AC24PDRHZ 000	Suction Hose Retainer	1	
9	AC73BDRHZ000	Handle Screw	1	
10	AC6 0KDRJZC0L	Dust Box Cover	1	
11	AC3 8KDRHZ 000	Outlet Filter Outer	1	
12	AC19FDRHZU03	Dust Box Packing A	1	
13	AC16KDDWZ000	Paper Filter Assembly	1	
14	AC6 0JDRHZ000	Ring E6	2	
15	AC01CDRHZU03	Wheel Rear (NN-B)	2	
16	AC62FDRHZ000	Washer Z (7.2x12x0.5)	2	
17	AC16CDRHZ000	Shaft	1	
18	AC37KDRHZ000	Air Inlet Filter	1	
19	AC25SDRHZU03	Sleeve	2	
20	AMC-1CTCE23	Wire Connector	5	
21	AC4 0KDRHZU03	Case Rear	1	
22	AC98EDRHZ000	Switch Assembly	1	
23	AC73KDRHZU03	Dust Box Packing B	1	
24	AC03EDRJZC0L	Case Cover	1	
25	AC6 6NDRHZU03	Dust Box Packing C		
26	AC4 0DDRHZ 003	Screw/WASHER	1	
27	AC3 3FDRHZ 000	Nut HEX	1	
28	AC97EBZXZV06	Power Cord	1	
29	AC96HDRHZU03	Hose Joint Pipe A	1	
30	AC3 4PDRHZ 000	Suction Hose Comp.	1	
31	AC7 0PDRHZ00B	Attachment Supporter B	1	
32	AC7 0PDRHZ00D	Attachment Supporter D	1	
33	AC7 0PDRHZ00A	Attachment Supporter A	1	
34	AC01TDRHZ000	Name Plate	1	
35	AC67VDRHZ000	CORD ASS'Y	1	
36	AC03FDRHZ000	Motor Cushion Rear	1	
37	AC7 6FDRHZ 000	THERMAL PROTECTOR	1	
38	AC33TDRHZ000	HEAT-SHRINKABEL TUBE	1	
39	AC29FDRHZ000	THERMAL PROTECTOR HOLDER	1	
40	AC4 0DDRHZ 006	SCR TPG TRS4X6	1	
41	AC99GDRHZ000	SILENCER COMP.	1	
42	AC98FDRHZ000	Motor Comp. (AC 120 V)	1	
43	AC02FDRHZ000	Motor Cushion Front	1	
44	AC42GDRHZ000	Cord Assembly (White)		
45	AC02LDRHZ000	Outlet Filter Inner	1	
46	AC09FDRJZC0L	Case Front	1	
47	AC6 0RDRHZU03	Crevice Tool	1	
48	AC62RDRHZ000	Upholstery Brush Base	1	
49	AC72RDRHZU03	Dusting Brush	1	
50	AC99PDRHZU03	Connection Pipe Assembly	1	
51	AC21HDRHZ 000	Lens	1	
52	AC01ADRJZC0L	Case Upper	1	
53	AC31ADRHZU03	Bumper	1	
54	AC6 0HDRHZU03	Air Inlet	1	
55	AC87NDRHZ000	Leaf Spring	1	
56	AC4 0DDRHZ 004	SCR TPG TRS 4X16	1	
57	AC4 0DDRHZ 005	Screw	1	
58	AC2 8GADFZ00	LAMP	1	
59	AC93HURZ00	LAMP HOLDER	1	
60	AC84RDRHZ000	Rotary Brush Comp.	1	
61	AC91ADRHZU03	Bottom Plate Assembly	1	
62	AC28SCZPZ000	Belt	1	
63	AC01ZDRJZ000	OPERATING INSTRUCTIONS	1	
64	Not Shown	Customer Card	1	
65	Not Shown	Service Center List	1	

1 WIRING DIAGRAM AND DRAWING

1.1. Wiring Diagram

