

This Owner's Manual is provided and hosted by [Appliance Factory Parts](#).



PANASONIC MC-UL910-00 Owner's Manual

[Shop genuine replacement parts for PANASONIC
MC-UL910-00](#)



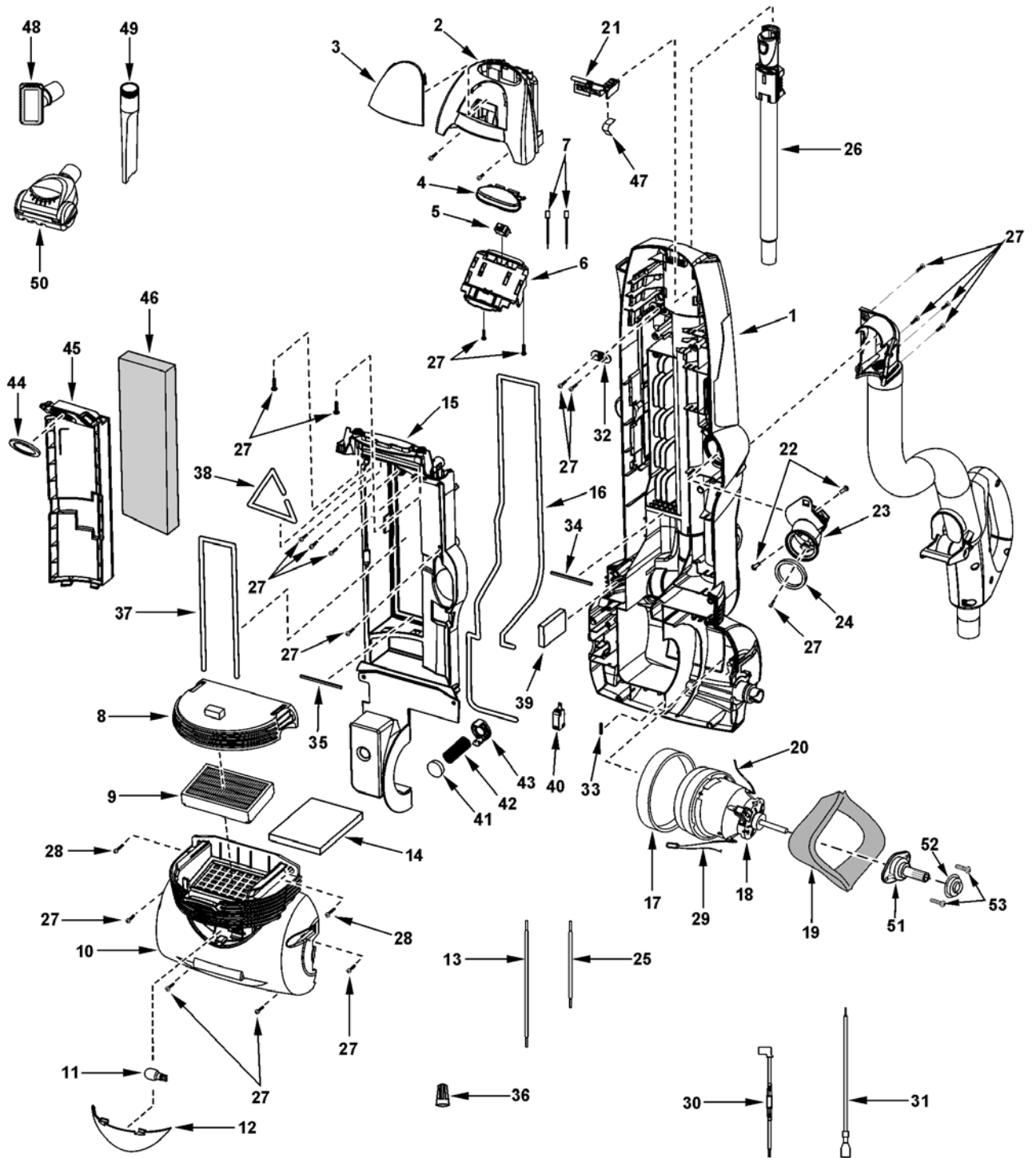
[Find Your PANASONIC Vacuum Cleaner Parts - Select From 605 Models](#)

----- Manual continues below -----

2 EXPLODED VIEW AND PARTS LIST

2.1. Body - Front

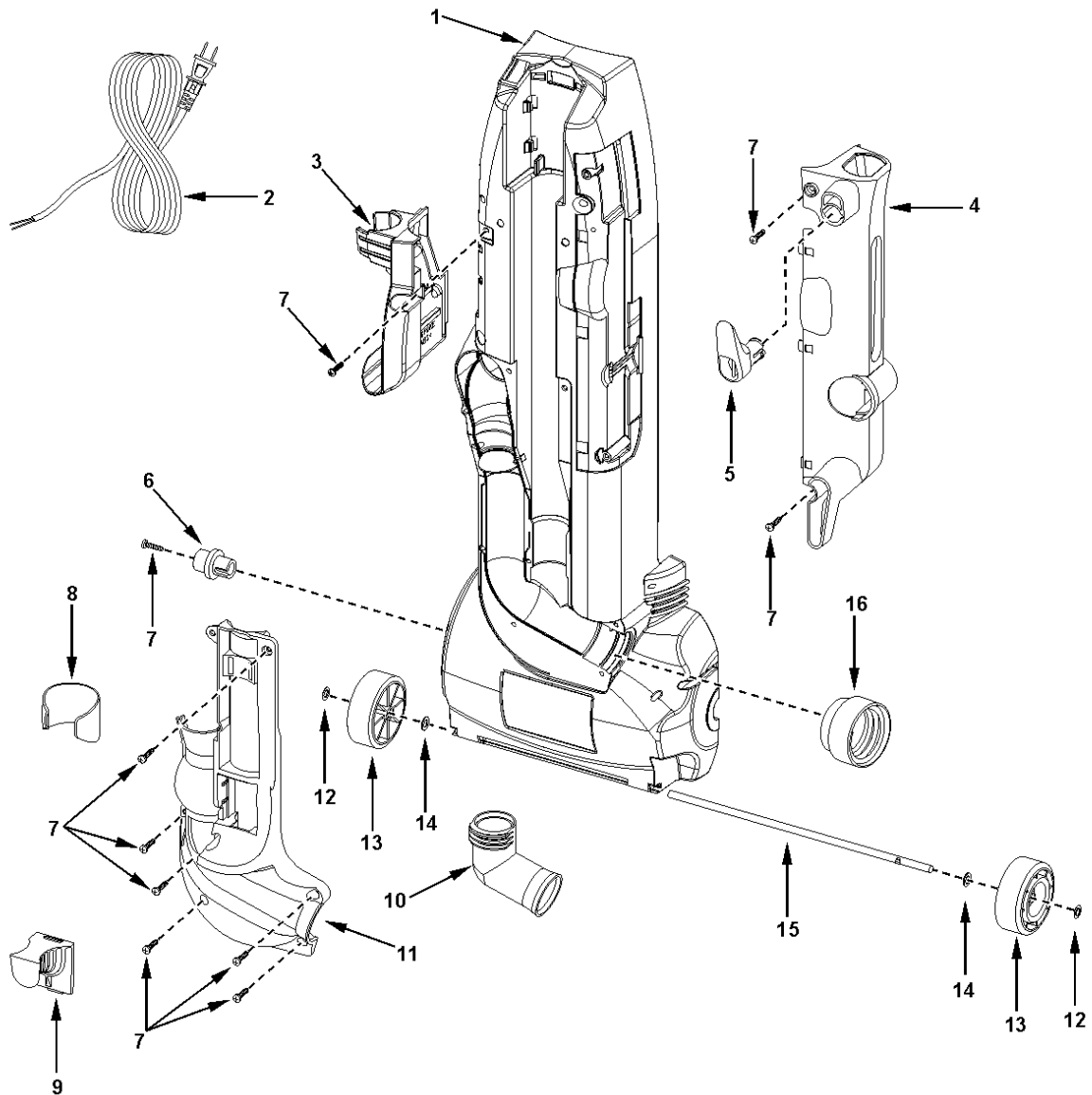
2.1.1. Exploded View



2.1.2. Parts List

Ref. No.	Part No.	Part Name & Description	Remarks
1	AC40KDKEZV07	Dust Compartment	1
2	AC03ECXWZ0H	Switch Cover	1
3	AC08MDKDZV07	Lens	1
4	AC05EDKDZSU1	Switch Button	1
5	AC01EDDRZ000	Switch ON/OFF	1
6	AC12EDKEZ000	Switch Support	1
7	AC85GCXWZ000	Lead Wire Unit - Black	2
8	AC41KDKEZ0H	Filter Cover	1
9	AC38KAXVZ000	Exhaust Filter - HEPA	1
10	AC09FDKDZ0H	Motor Case	1
11	AC28GBKHZ000	Bulb	1
12	AC21HCXWZ000	Window	1
13	AC85WDDWZ000	Wire	1
14	AC02LCXWZ000	Rear Cover Packing	1
15	AC60KDKEZV07	Dust Cover	1
16	AC19ACPTZ000	Body Packing	6
17	AMC02F-E00	Motor Support Rubber Front	1
18	AC92FCHSZ000	Fan Motor Unit	1
19	AC99GAMMZ00	Noise Suppressor	1
20	AC85WDJKZ000	Lead Wire - Motor	1
21	AC15KCXWZV04	Fastener	1
22	AXTN3+8BFY	Screw	2 Shipped 10 per package
23	AC10KDKEZV07	Bag Supporter Assembly	1
24	AC64HDKEZ000	Suction Inlet Packing	1
25	AC43GBKZ000	Lead Wire - White	1
26	AC99PCXWZV07	Extension Wand Assembly	1
27	AXTN4+16BFY	Screw	15 Shipped 10 per package
28	AXTN4+20BFY	Screw	4 Shipped 10 per package
29	AC93HCHDZ000	Bulb Socket	1
30	AC99WDKEZ000	Lead Assembly	1
31	AC85WDDWZ000	Lead Wire - White	1
32	AMC62E-J20	Cord Stopper	1
33	AC19ADDSZ000	Body Packing	1
35	AC75ADKEZ000	Packing	1
36	AMC-1CTCE23	Wire Nut	5 Shipped 10 per package
37	AC66KDKEZ000	Packing	1
38	AC66KDKDZ000	Packing	1
39	AC25JDKEZ000	Filter	1
40	AC98EYUZ00	Switch ON/OFF	1
41	AC69KJMZV07	Protector	1
42	AC70KDKDZV00	Protector Spring	1
43	AC68KAJDZV07	Protector Case	1
44	AC74KDHKZ000	Dust Packing	1
45	AC32KDKEZ000	Filter Supporter	1
46	AC92KDKEZ000	Semi Filter Unit	1
47	AC18DCXWZ000	Spring Release Button	1
48	AC63RDDRZV06	Combination Brush	1
49	AC60RAKZZV06	Crevice Tool	1
50	AC80SCWZZV0N	Air Turbine	1
51	AC25SCWZZ000	Flange	1
52	AC03FAFYZ000	Motor Support Rear	1
53	AXTN4+10FFY	Screw	2 Shipped 10 per package

2.2. Body - Rear

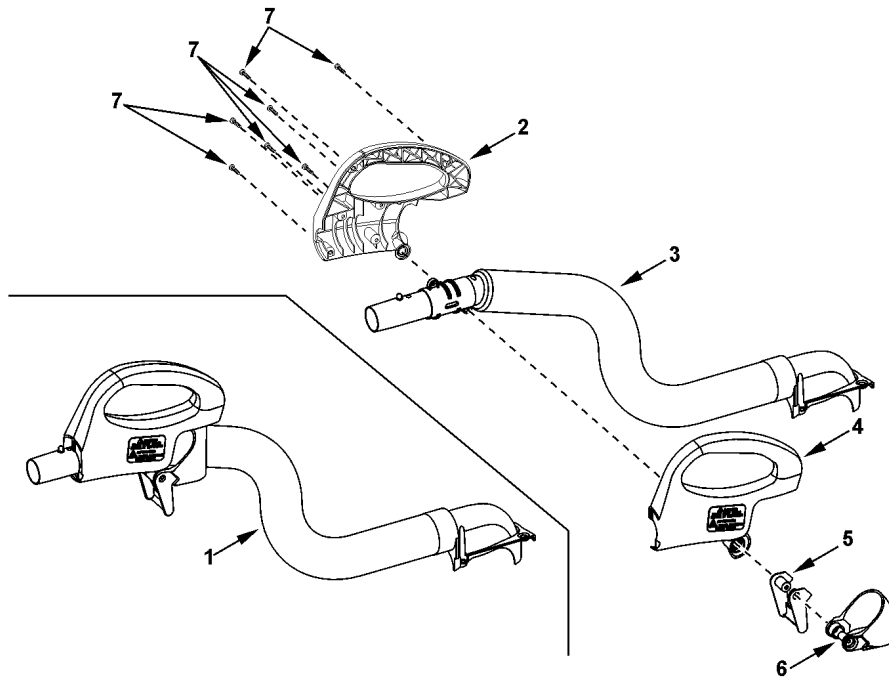


2.2.1. Parts List

Ref. No.	Part No.	Part Name & Description	Quantity	Remarks
1	AC40KDKEZV07	Dust Compartment	1	
2	AC97EACZV06	Power Cord	1	
3	AC66PDKEZV07	Tool Caddy	1	
4	AC32RCXWZV07	Attachment Holder	1	
5	AC53ECWZZV07	Cord Hook	2	
6	AC13ECRCZ000	Nut - Nozzle Spring	1	
7	AXTN4+16BFY	Screw	10	Shipped 10 per package
8	AC23PCXWZV07	Hose Holder	1	
9	AC53EDDRZV07	Cord Storage Hook - Lower	1	
10	AC39LDKEZV07	Air Guide	1	
11	AC48HCXWZV07	Rear Cover	1	
12	AC74SUSZ00	Stopper Wheel	2	
13	AC99CBSAZV06	Wheel Unit	2	
14	AXWG6E115FY	Washer	2	
15	AC16CBBRZ00	Roller Shaft	1	
16	AC29QBKHZV06	Dust Packing	1	

2.3. Handle

2.3.1. Exploded View

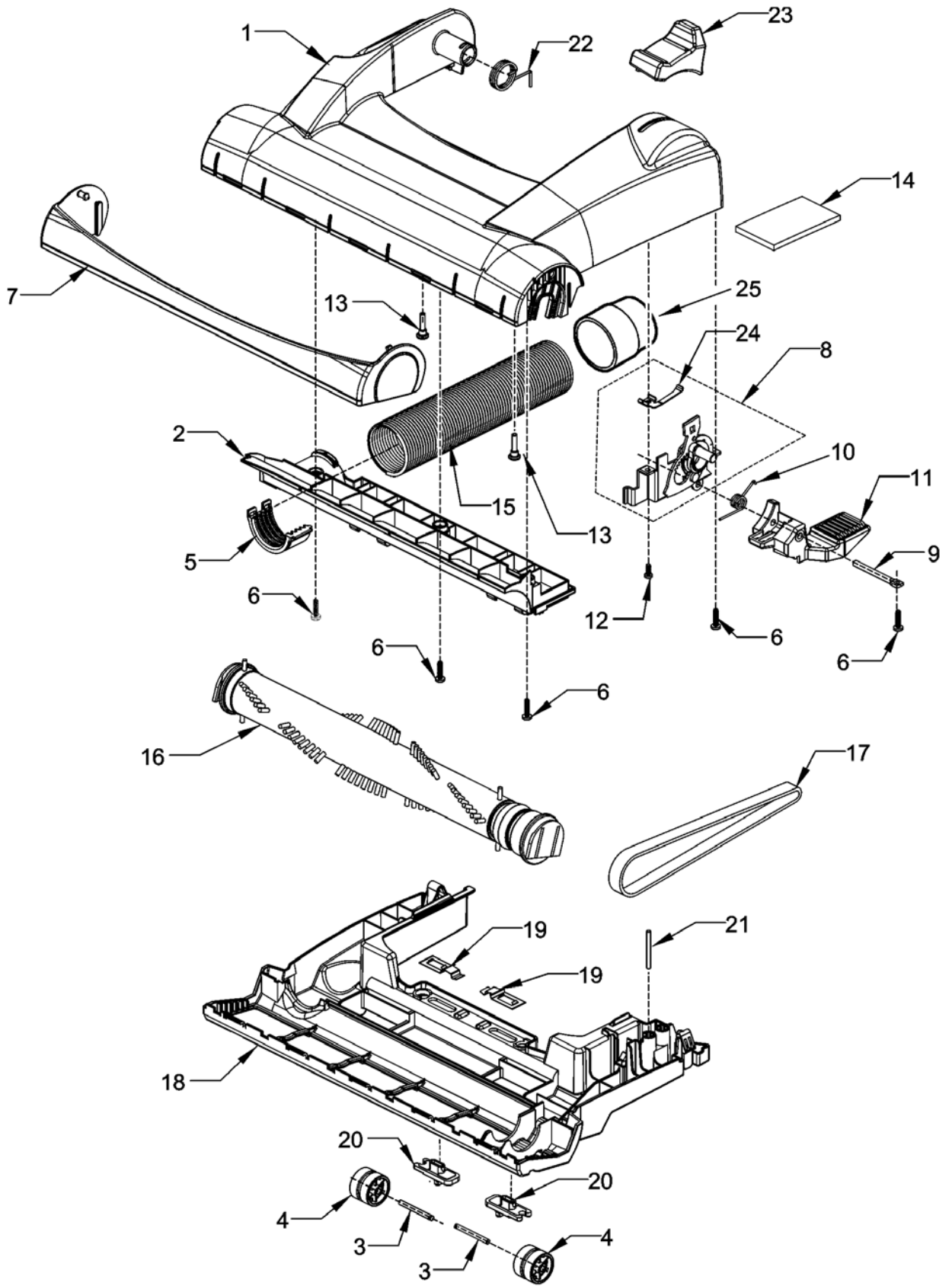


2.3.2. Parts List

Ref. No.	Part No.	Part Name & Description	Quantity	Remarks
1	AC95BCXWZV07	Handle Unit	1	
2	AC50BCXWZV07	Handle Grip - Right (Overmold)	1	
3	AC84PCXWZV06	Hose Unit	1	
4	AC67BCXWZV07	Handle Grip - Left (Overmold)	1	
5	AC24PCXWZV07	Hose Support	1	
6	AC27PCXWZV07	Hose Rotary Cover	1	
7	AXTN4+16BFY	Screw	7	Shipped 10 per package

2.4. Nozzle Housing

2.4.1. Exploded View

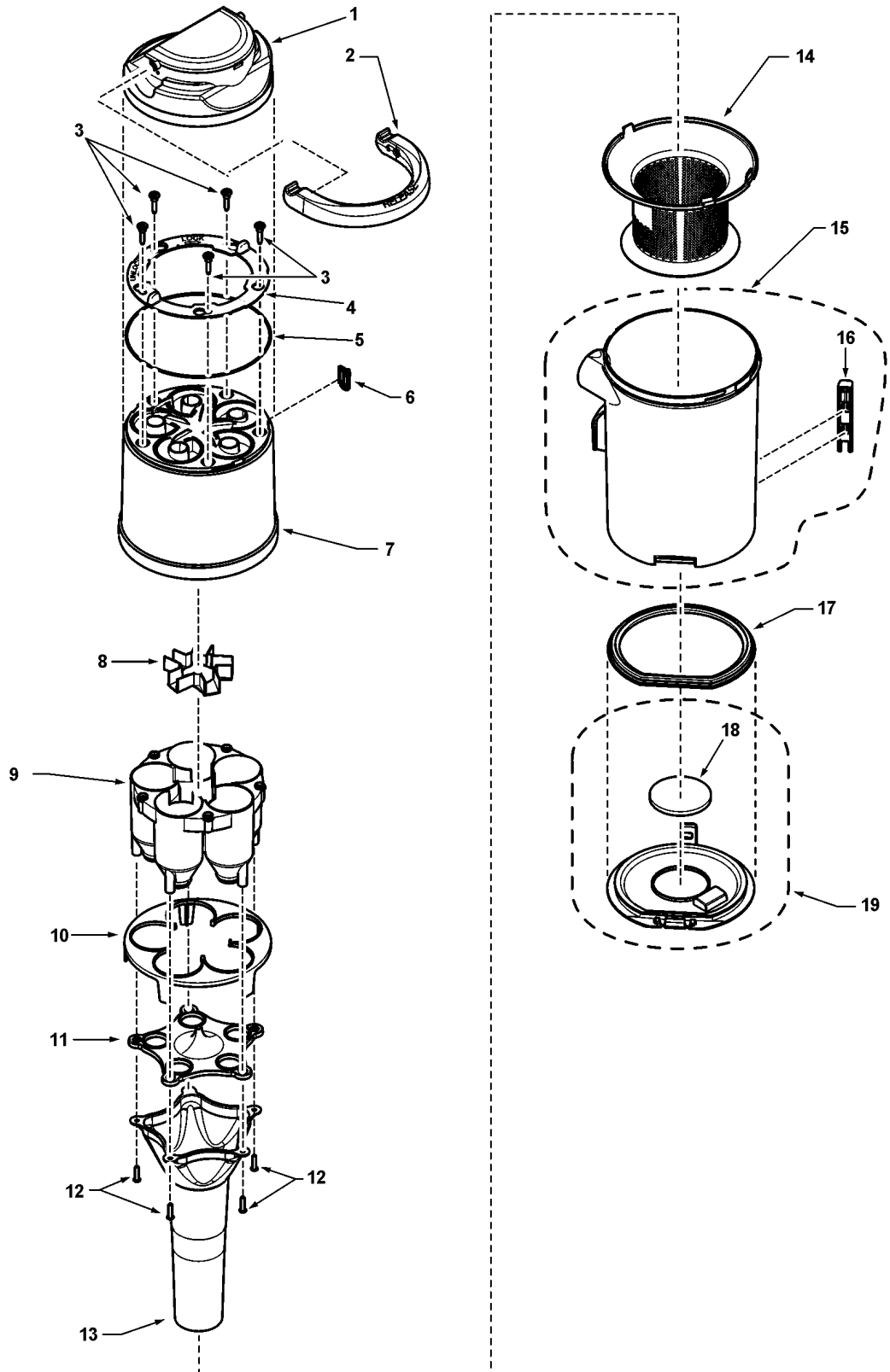


2.4.2. Parts List

Ref No.	Part No.	Part Name & Description	Quantity	Remarks
1	AC01ADKDZWH	Nozzle Housing	1	
2	AC02ACNFZV07	Upper Body	1	
3	AC16CNXZ00	Roller Shaft	2	
4	AC99QCYBZV06	Nozzle Roller	2	
5	AC12ACNFZV07	Body Cap	1	
6	AXTN4+16BFY	Screw	5	Shipped 10 per package
7	AC10ACWZV06	Furniture Guard	1	
8	AC30FAMAZ000	Handle Release Assembly	1	
9	AMC51A-V30	Pedal Shaft	1	
10	AC58AAFVZ00	Pedal Spring	1	
11	AC47A2VZV06	Pedal	1	
12	AXTN4+10BFY	Screw	1	Shipped 10 per package
13	AMC68A-V30	Screw For Body	2	
14	AC04RANFZV06	Nozzle Packing (Foam)	1	
15	AC34PCNFZV06	Nozzle Hose	1	
16	AC84RCKPZ000	Agitator Unit	1	
17	AC28SJPZ00	Belt	1	
18	AC27ACKPZV07	Lower Plate	1	
19	AMC70N-V30	Stop Latch Spring	2	
20	AMC68N-AVOK	Latch	2	
21	AC43SAFXZ000	Belt Guard	1	
22	AC40RCNFZ000	Floor Nozzle Spring	1	
23	AC42AAFYZV06	Foot Pedal Cover	1	
24	AC57AAWFZ00	Spring	1	
25	AC29QBKHZV06	Hose Plug B	1	

2.5. Dust Bin Assembly

2.5.1. Exploded View



2.5.2. Parts List

Ref. No.	Part No.	Part Name & Description	Quantity	Remarks
1	AC20HDKEZV0Q	Lid	1	
2	AC64BDGMZV07	Handle	1	
3	AMC68A-V30	Screw	5	
4	AC15KDHKZV04	Fastner	1	
5	AC74EDHKZ000	Air Path Seal	1	
6	AC83DDHKZV04	Locking Cam	1	
7	AC75KDKEZVUQ	Dust Box Terminal	1	
8	AC21VDGMZU03	Air Guide Blade	1	
9	AC39LDGMZV04	Air Guide	1	
10	AC73HDGMZS01	Partition Plate	1	
11	AC04LDGMZV04	Gasket	1	
12	AXTN4+16BFY	Screw	5	Shipped 10 per package
13	AC36KDKEZV04	Supporter Unit	1	
14	AC43KDKEZS01	Pre-Filter	1	
15	AC42KDKEZ0U0	Filter Case	1	
16	AC48KDGZV07	Slider	1	
17	AC73KDGZV06	Dust Box Packing	1	
18	AC74KDGZ000	Dust Packing	1	
19	AC25KDGZ000	Dust Box Plate	1	