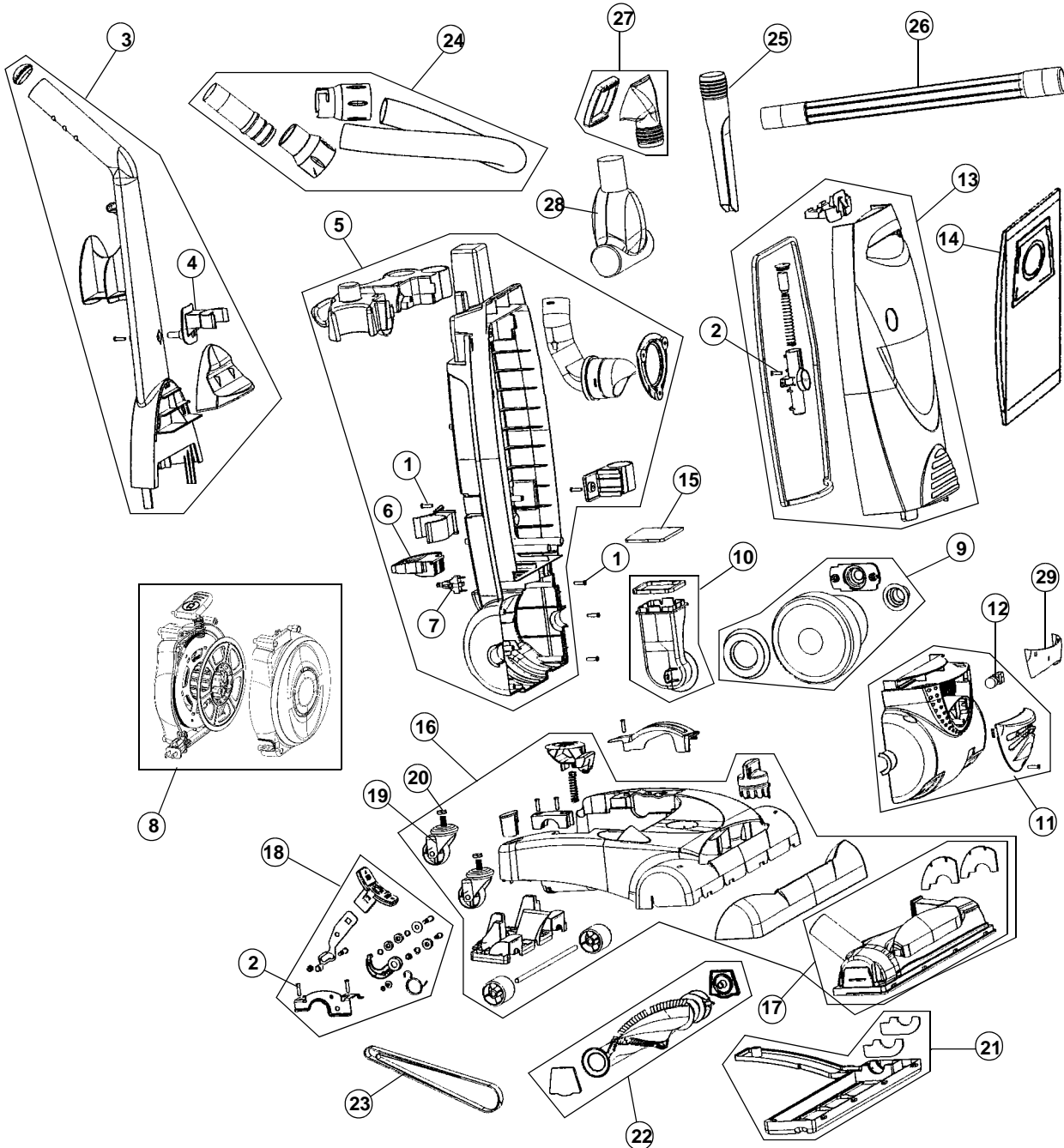




ASSEMBLY SCHEMATIC

086030
086035
UD30000





PART LISTING

| Item | Part Number | Models To Fit | Part Description |
|------|-------------|---------------|------------------------------------|
| 1 | RO-250100 | ALL | SCREW - BODY |
| 2 | RO-720430 | ALL | SCREW - COMBO |
| 3 | RO-PL1101 | ALL | HANDLE ASSEMBLY |
| 4 | RO-PL1102 | ALL | TURBO TOOL CLIP |
| 5 | RO-PL1109 | ALL | BACK PANEL |
| 6 | RO-PL3010 | ALL | SWITCH PEDAL |
| 7 | RO-860081 | ALL | SWITCH |
| 8 | RO-PL1112 | ALL | CORD REEL REWIND ASSEMBLY |
| 9 | RO-PL1104 | ALL | MOTOR ASSEMBLY |
| 10 | RO-PL1110 | ALL | MOTOR DUCT ASSEMBLY |
| 11 | RO-PL1105 | ALL | MOTOR COVER ASSEMBLY |
| 12 | RO-920906 | ALL | BULB - 906 |
| 13 | RO-PL1103 | 086030 | FRONT PANEL ASSEMBLY - BLUE SWERVE |
| | RO-PL8603 | 086035 | FRONT PANEL ASSEMBLY - BLUE EZ |
| | | UD30000 | FRONT PANEL ASSEMBLY - RED EZ |
| 14 | RO-115011 | ALL | TYPE U BAG |
| | RO-920047 | ALL | TYPE U BAG / 3 PACK |
| | RO-920750 | ALL | TYPE U BAGS - MICROFRESH / 3 PACK |
| 15 | | ALL | BAG CHAMBER FILTER |
| 16 | RO-PL1106 | | NOZZLE COVER ASSEMBLY - BLUE |
| | | | NOZZLE COVER ASSEMBLY - RED |
| 17 | RO-PL1107 | ALL | NOZZLE HOUSING 15" - CLEAR |
| 18 | RO-PL1108 | ALL | ON/OFF BELT CONTROL ASSEMBLY |
| 19 | RO-863038 | ALL | CASTER ASSEMBLY |
| 20 | RO-863054 | ALL | CASTER NUT |
| 21 | | ALL | NOZZLE GUARD - 15" |
| 22 | RO-PL1113 | ALL | BRUSH ROLL ASSEMBLY |
| 23 | RO-540310 | ALL | STYLE 5 BELT |
| 24 | RO-PL1114 | ALL | UPPER HOSE ASSEMBLY |
| 25 | RO-920035 | ALL | CREVICE TOOL |
| 26 | RO-402803 | ALL | EXTENSION WAND 1-1/4 |
| 27 | RO-920215 | ALL | 2 IN 1 BRUSH ASSEMBLY |
| 28 | RO-UTT000 | ALL | TURBO TOOL |
| | RO-UTT020 | ALL | BELT - TURBO TOOL |
| | RO-UTT030 | ALL | LOCK NUT RING - TURBO TOOL |
| 29 | RO-PL8635 | ALL | F-29 EXHAUST FILTER |

086030
086035
UD30000